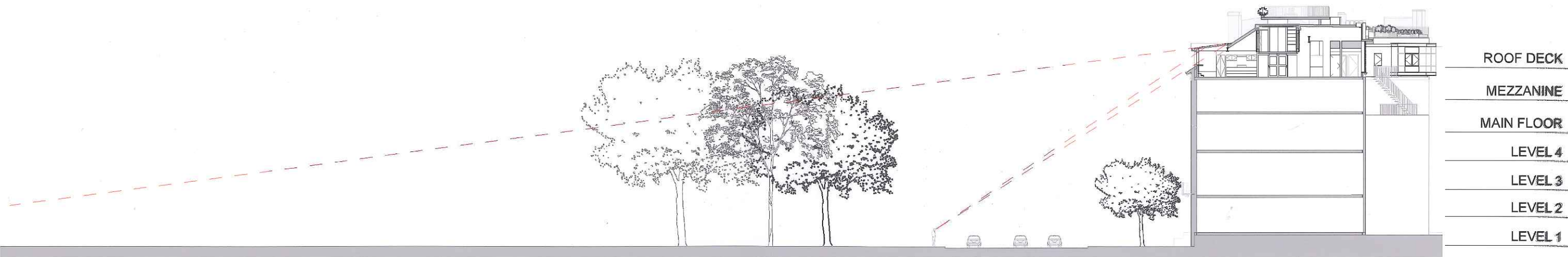


**SITE LOCATION**

**DESCRIPTION of PROPOSED WORK**

- Rubber roof infill between dormers: Replace the single sloped rubber roof infill between the dormers with historical skylight system (Heritage Series by Crystal Structures Glazing or similar) of the same same pitch and height. All visible surfaces of the skylight are to be clad in copper. Replace the rubber roofing of adjacent dormer roof with slate roofing to match existing. The insulated glass are to be solar control low-e coated with less than 65% visual light transmission. Additionally, it will be equipped with internal roller blinds.



**BUILDING SECTION DIAGRAM**

**PAUL LUKEZ** ARCHITECTURE  
T (617) 628-9160 [www.lukez.com](http://www.lukez.com)  
1310 Broadway, Somerville, MA 02144

**COVER SHEET**



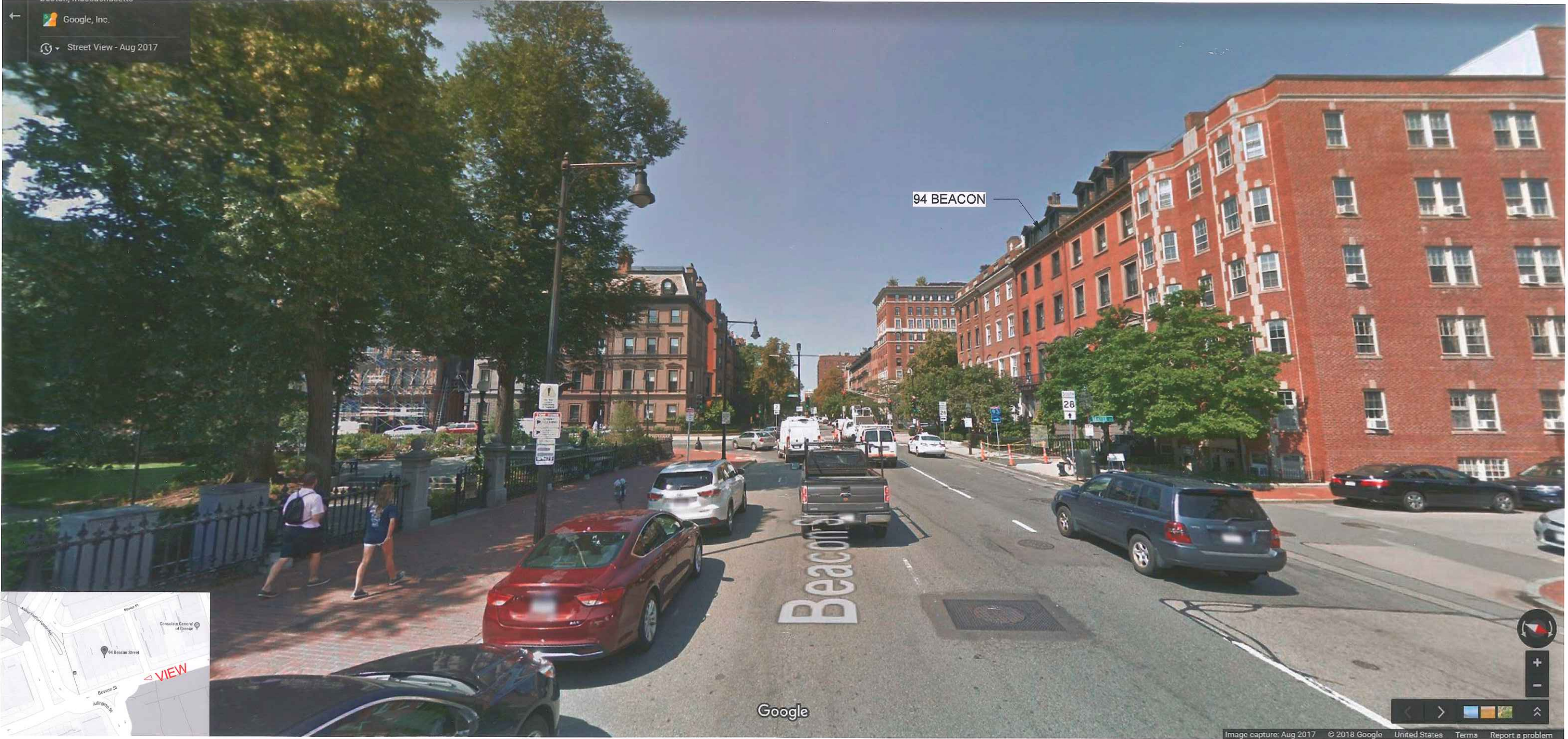
94 BEACON

**EXISTING VIEW FROM BEACON ST**  
PHOTO TAKEN IN 2018  
ROOF TOP IS MOSTLY HIDDEN BY ADJACENT WALLS, CHIMNEYS, & EQUIPMENTS



**PAUL LUKEZ**  
ARCHITECTURE  
T (617) 628-9160 [www.lukez.com](http://www.lukez.com)  
1310 Broadway, Somerville, MA 02144

**BEACON HILL ARCHITECTURAL COMMISSION  
ADVISORY DESIGN APPROVAL SUBMISSION**



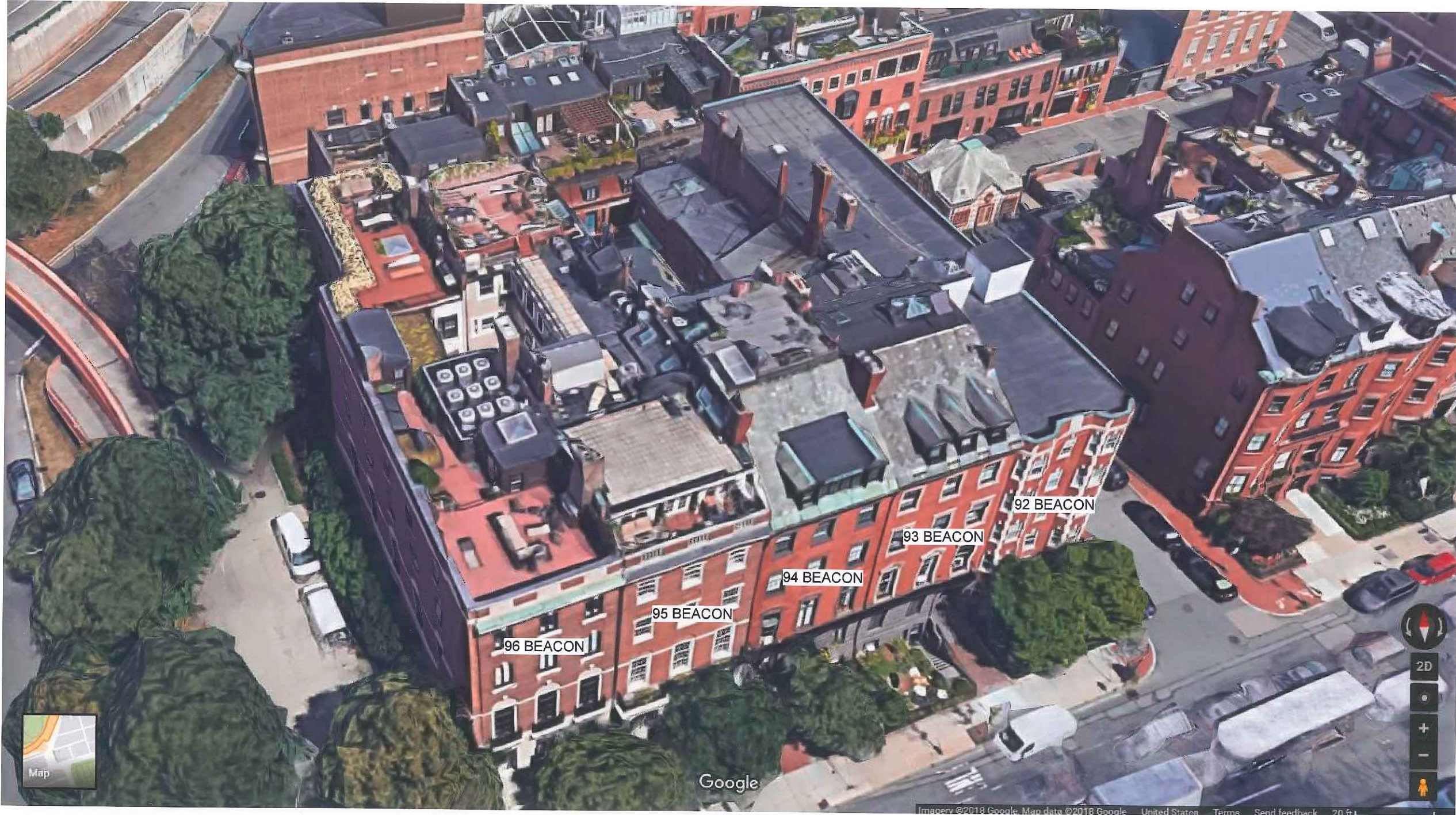
**EXISTING VIEW FROM BEACON ST**  
ROOF DECK IS NOT VISIBLE FROM THE STREET

**PAUL LUKEZ** | T (617) 628-9160 | [www.lukez.com](http://www.lukez.com)  
ARCHITECTURE | 1310 Broadway, Somerville, MA 02144

**VIEW FROM BEACON STREET EAST**

**94 BEACON STREET APT 5 RENOVATION**

SCALE:  
DATE: 9/25/18

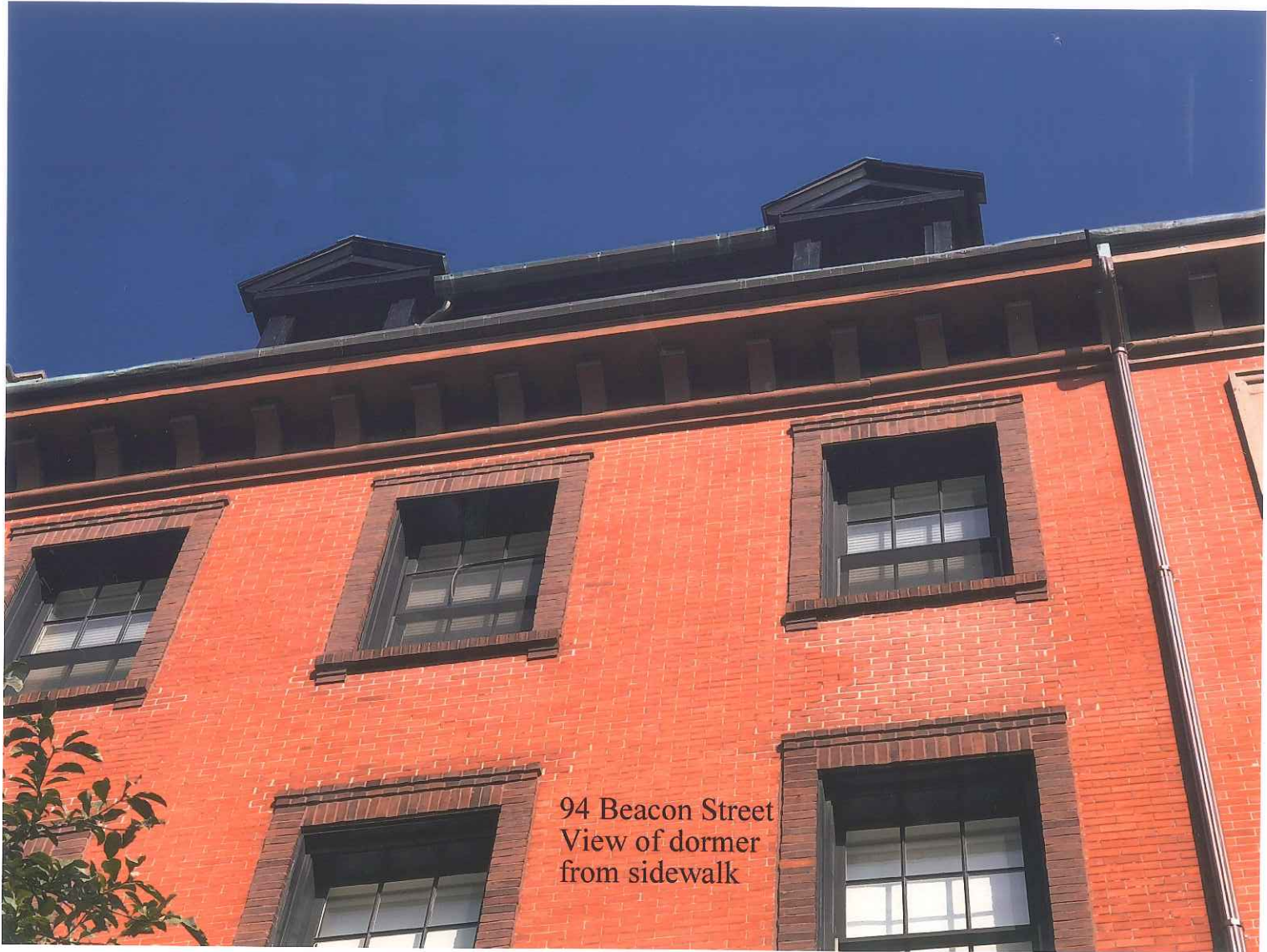


**PAUL LUKEZ**  
ARCHITECTURE  
T (617) 628-9160 [www.lukez.com](http://www.lukez.com)  
1310 Broadway, Somerville, MA 02144

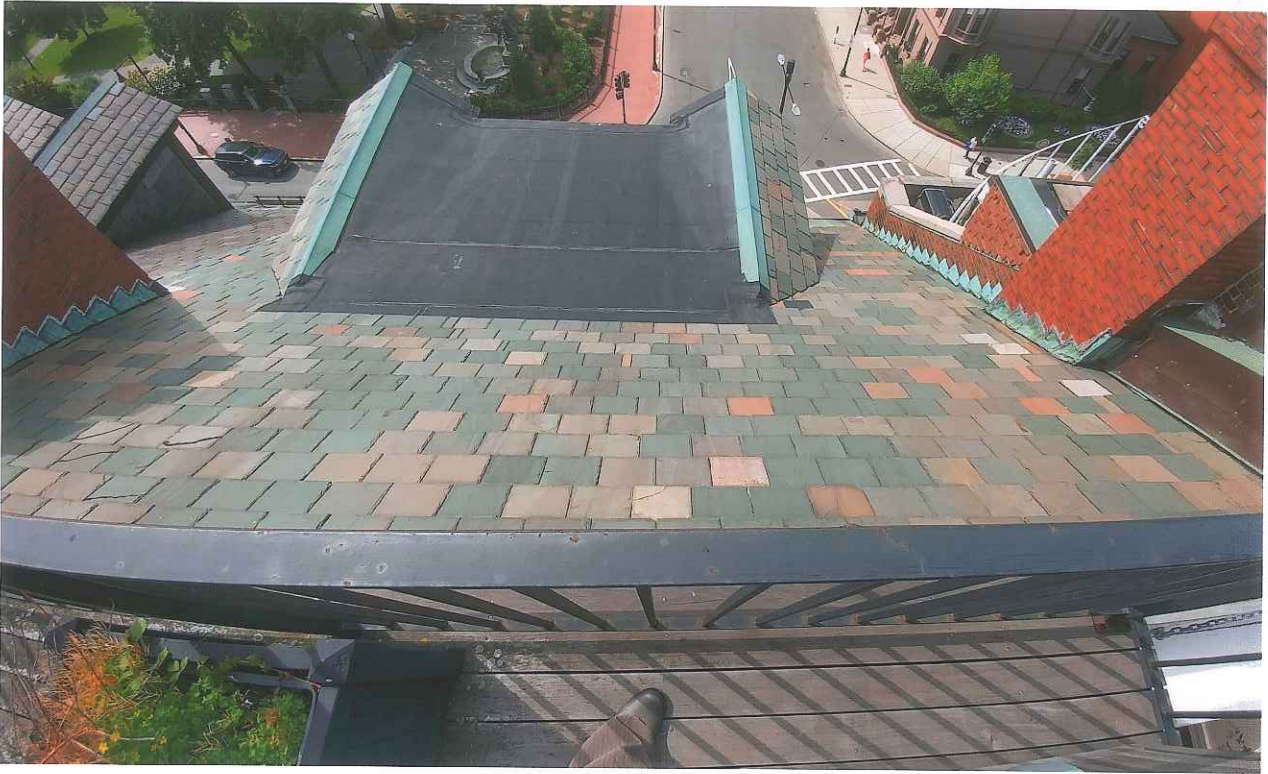
**94 BEACON STREET APT 5 RENOVATION**

**EXISTING ROOFTOP**

SCALE:  
DATE: 9/25/18



VIEW OF DORMER FROM SIDEWALK



VIEW DOWN AT RUBBER ROOF BETWEEN DORMERS FROM ROOF DECK



EXISTING VIEW FROM THE BOSTON PUBLIC GARDEN  
PHOTO TAKEN IN 2018



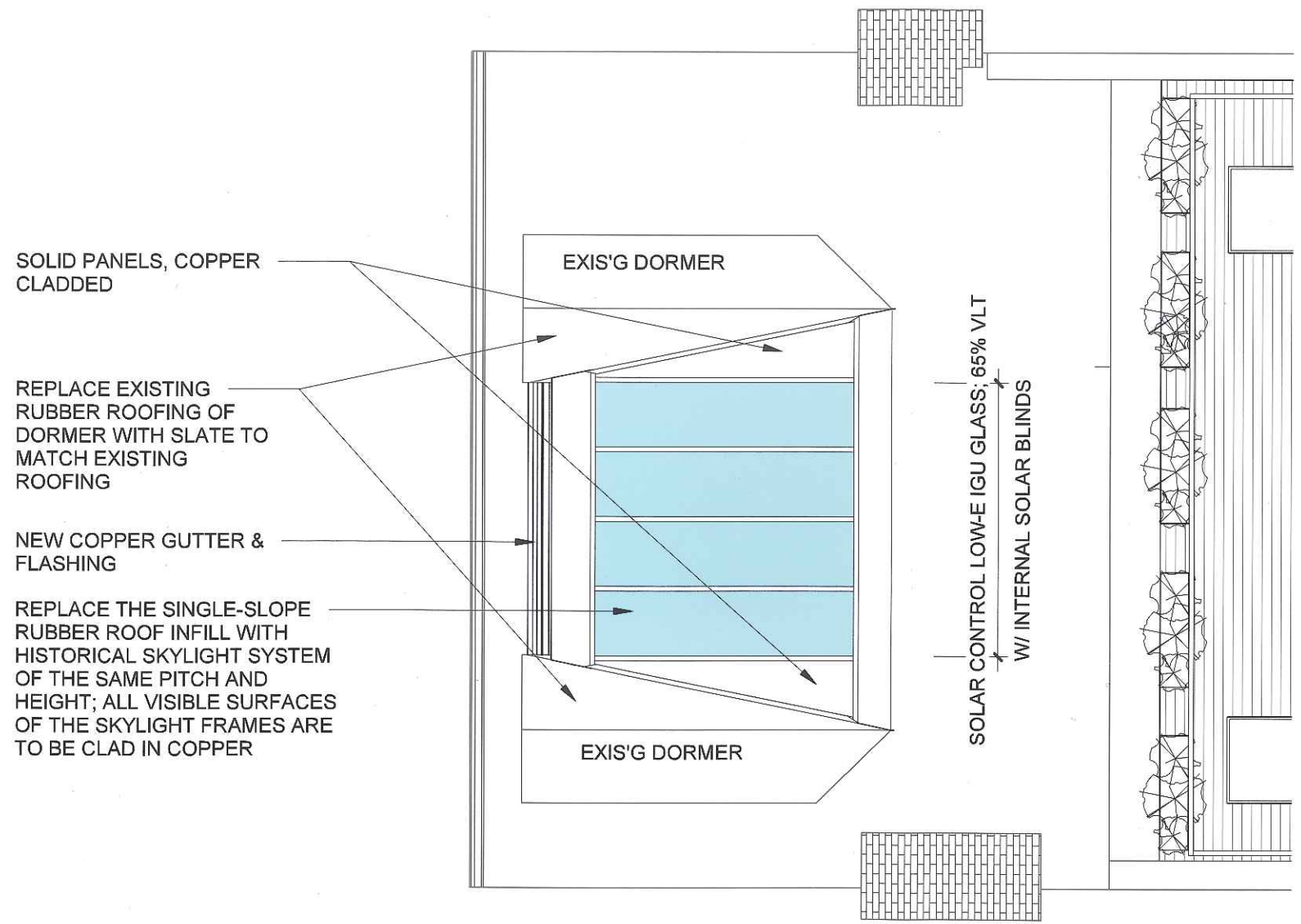
ZOOM-IN VIEW OF THE ROOF DECK FROM THE BOSTON PUBLIC GARDEN  
PHOTO TAKEN IN 2018

**PAUL LUKEZ** ARCHITECTURE  
T (617) 628-9160 [www.lukez.com](http://www.lukez.com)  
1310 Broadway, Somerville, MA 02144

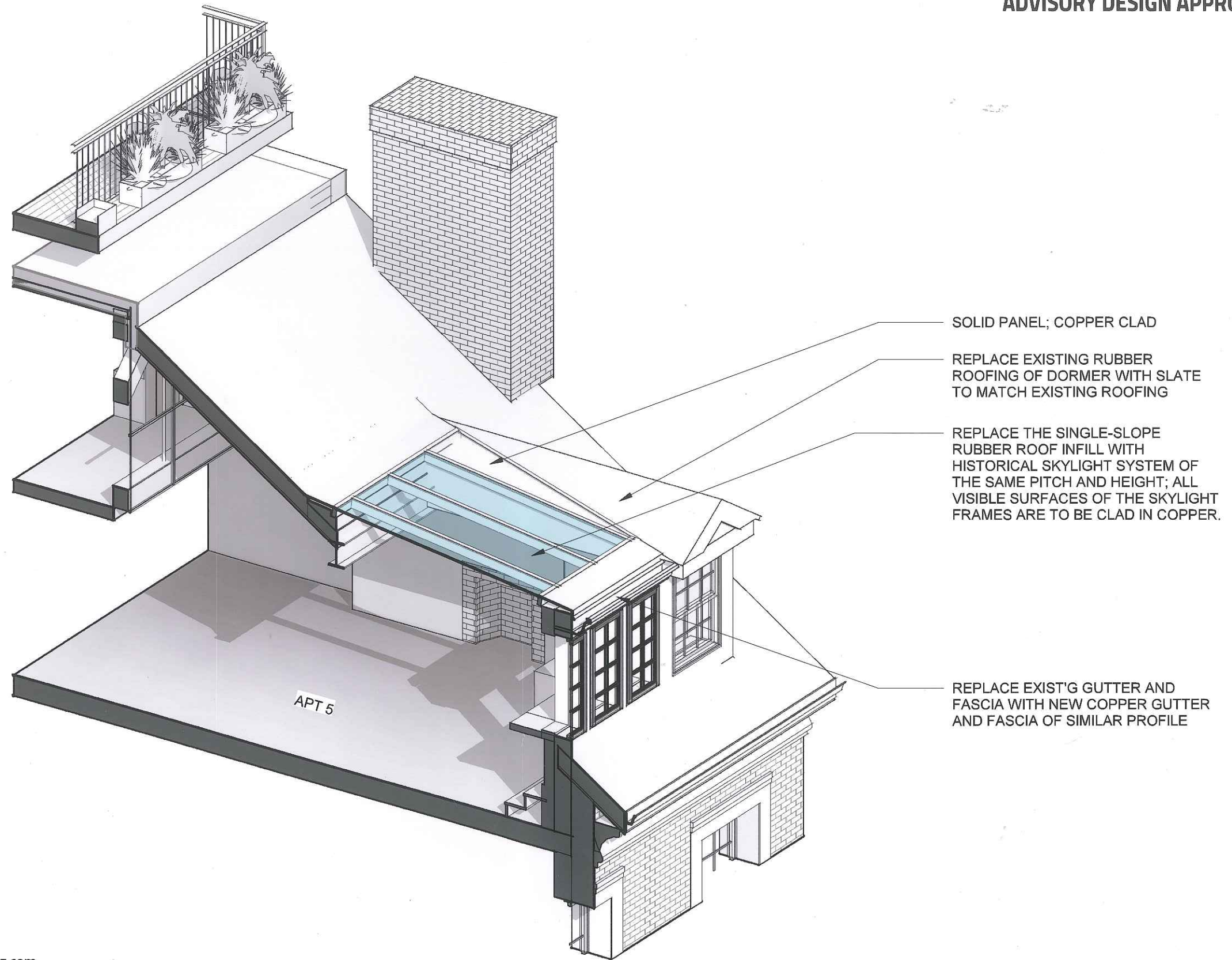
**94 BEACON STREET APT 5 RENOVATION**

**EXISTING FRONT VIEW PHOTOS**

SCALE:  
DATE: 9/25/18



BEACON HILL ARCHITECTURAL COMMISSION  
ADVISORY DESIGN APPROVAL SUBMISSION



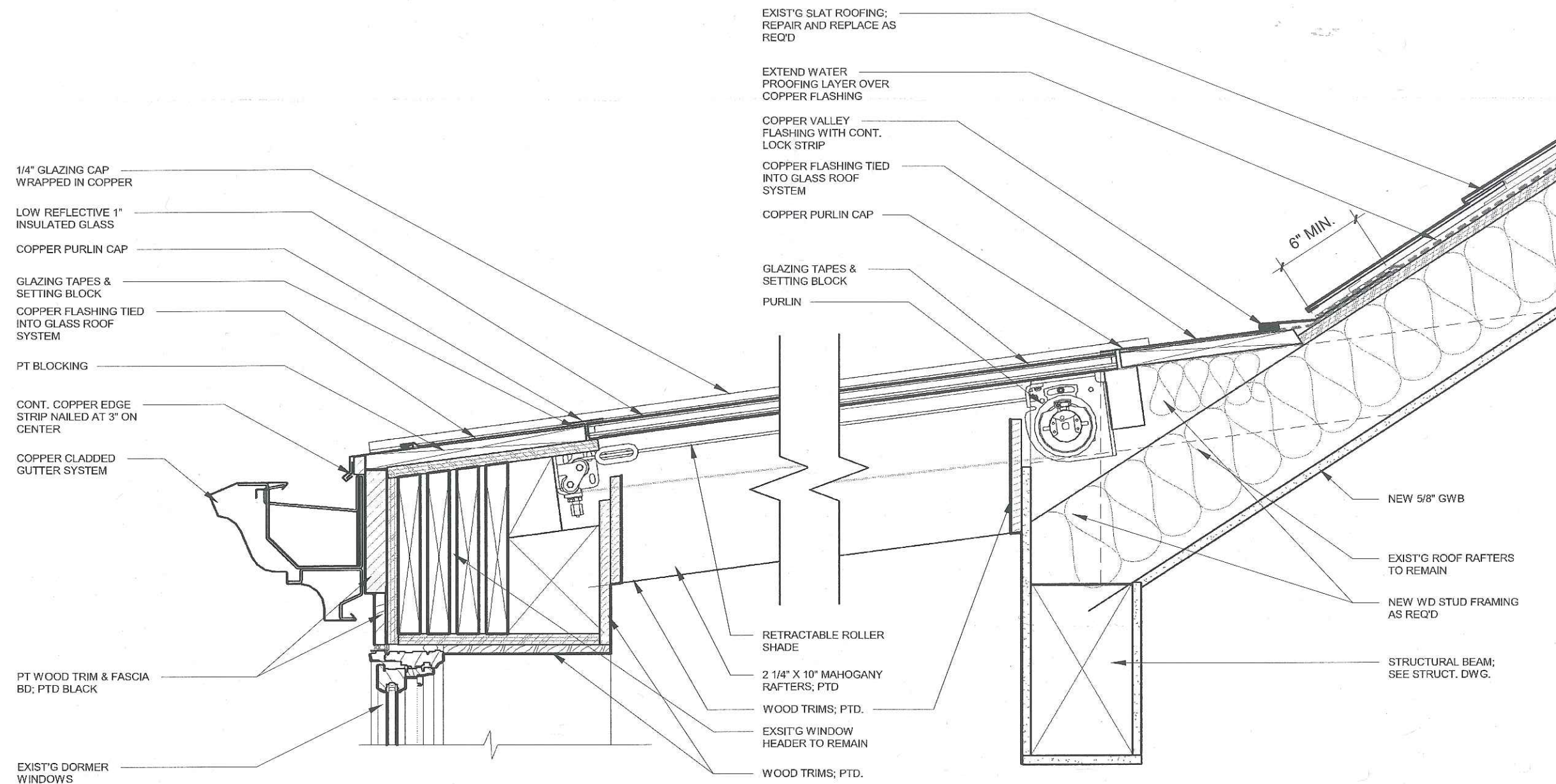
PAUL LUKEZ ARCHITECTURE  
T (617) 628-9160 [www.lukez.com](http://www.lukez.com)  
1310 Broadway, Somerville, MA 02144

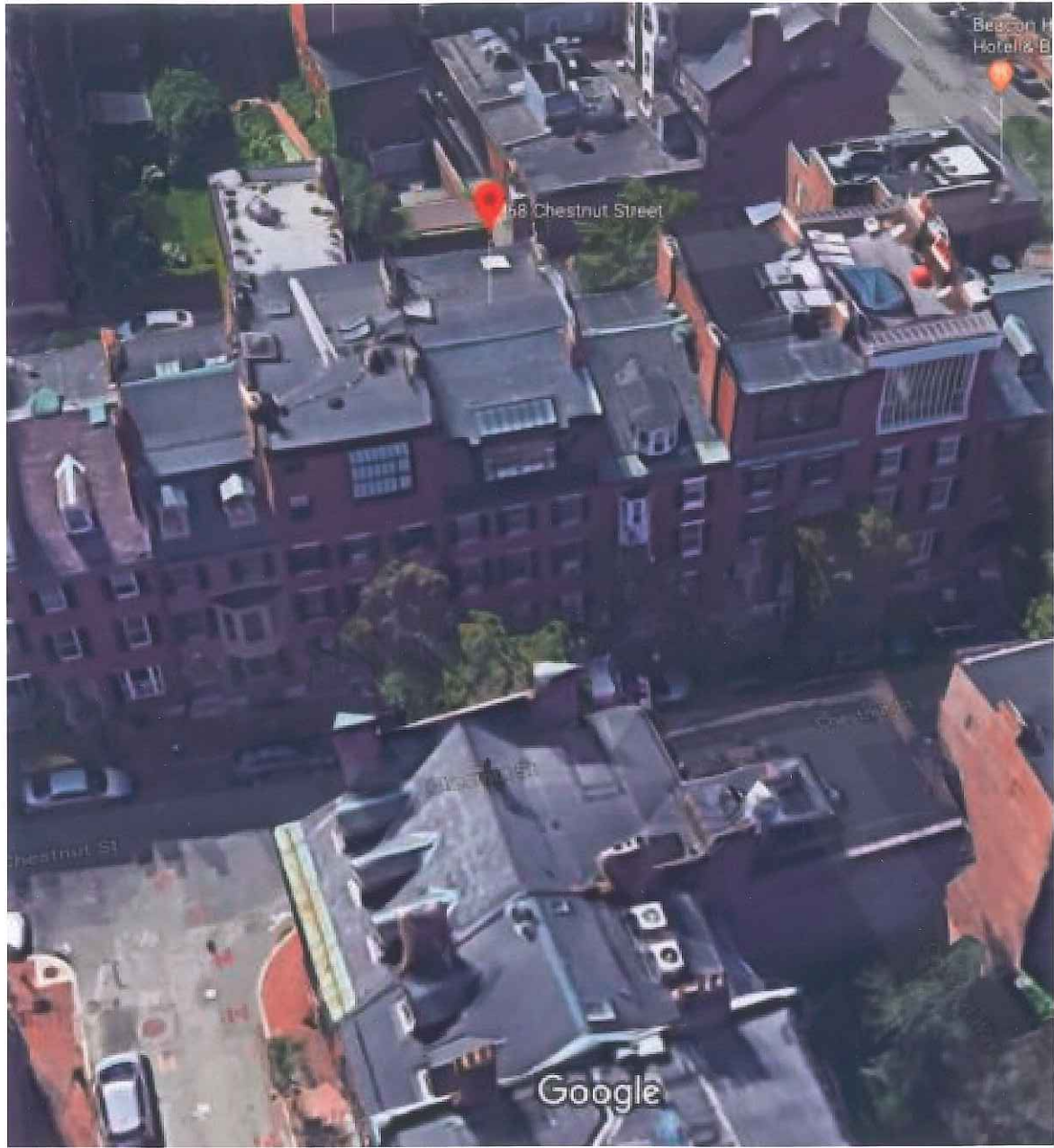
BEACON STREET APT 5 RENOVATION

PROPOSED ROOFTOP AXON\_VIEW TO EAST

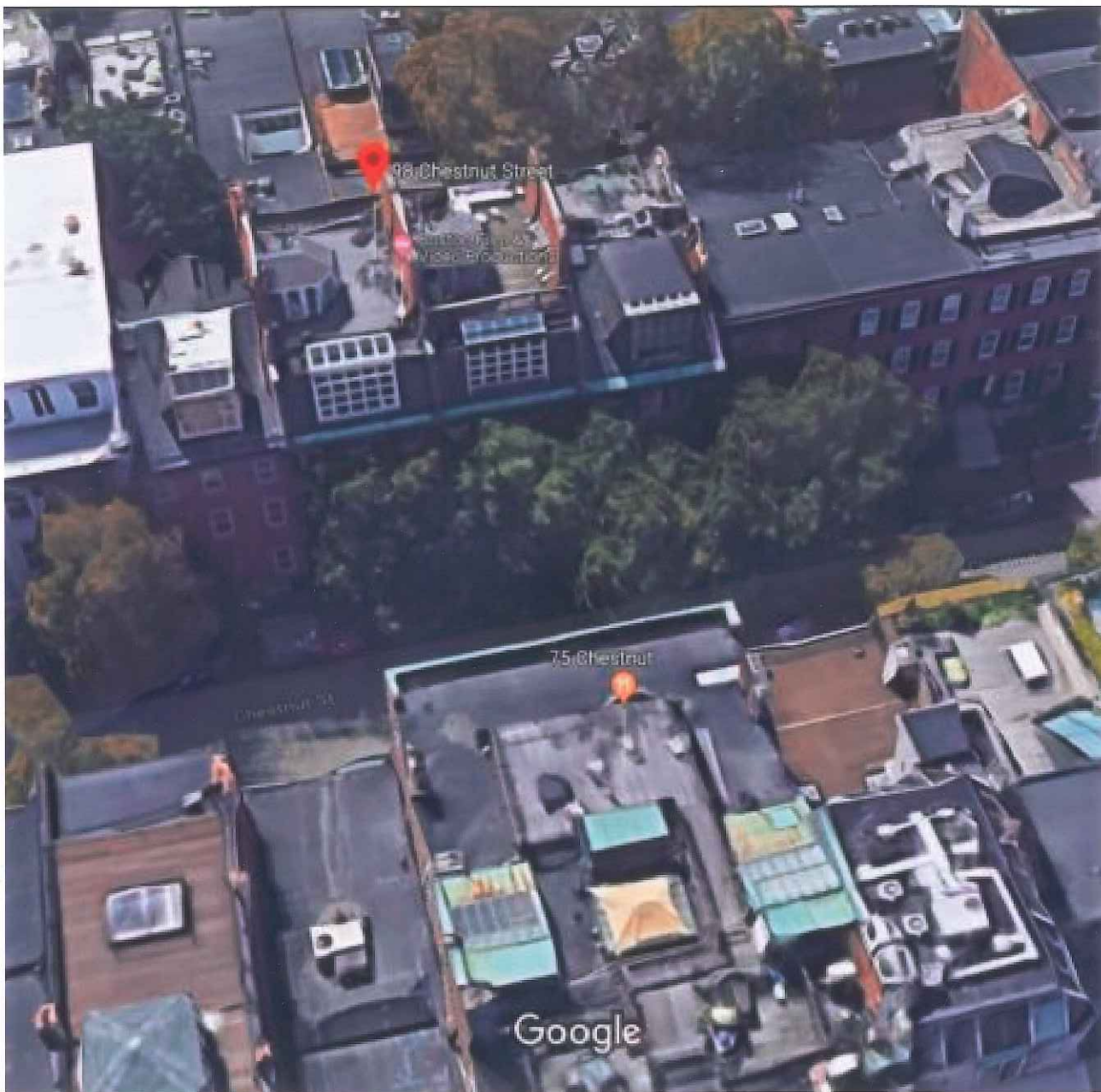
SCALE:  
DATE: 9/25/18







ROOF TOP VIEW - 68 CHESTNUT STREET



ROOF TOP VIEW - 94, 96, 98, 100 CHESTNUT STREET

**PAUL LUKEZ**  
ARCHITECTURE | T (617) 628-9160 | [www.lukez.com](http://www.lukez.com)  
1310 Broadway, Somerville, MA 02144

**94 BEACON STREET APT 5 RENOVATION**

**BEACON HILL PRECEDENTS**

SCALE:  
DATE: 09/25/18



STREET VIEW - 68 CHESTNUT STREET



STREET VIEW - 96 CHESTNUT STREET



STREET VIEW - 98 CHESTNUT STREET

**PAUL LUKEZ** | T (617) 628-9160 [www.lukez.com](http://www.lukez.com)  
ARCHITECTURE | 1310 Broadway, Somerville, MA 02144

**94 BEACON STREET APT 5 RENOVATION**

**BEACON HILL PRECEDENTS**

SCALE:  
DATE: 09/25/18