

LIFE ALIVE ORGANIC CAFÉ

431 BOYLSTON STREET
BOSTON, MA 02116



TABLE OF CONTENTS:

PROPOSED WORK FOR LIFE ALIVE TENANT SPACE:

- 1 - Site Plan
- 2 - Floor Plan
- 3 - 3D View
- 4 - Exterior Elevation - Front Facade
- 5 - Exterior Elevation - Rear Facade
- 6 - Existing Photos
- 7 - Signage Details
- 8 - Patio Furniture
- 9 - Door Details

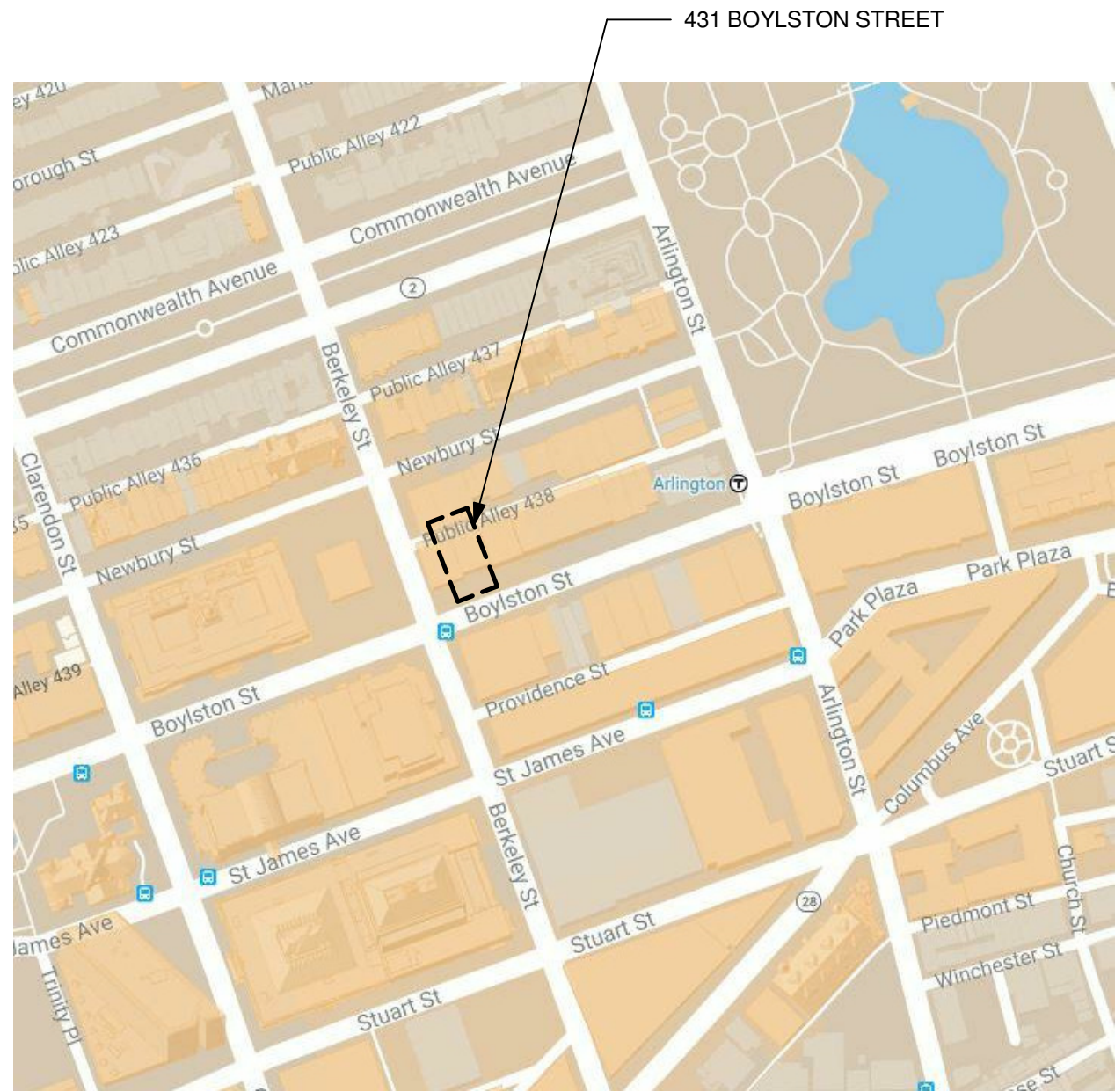
CONTACTS:

BKA ARCHITECTS

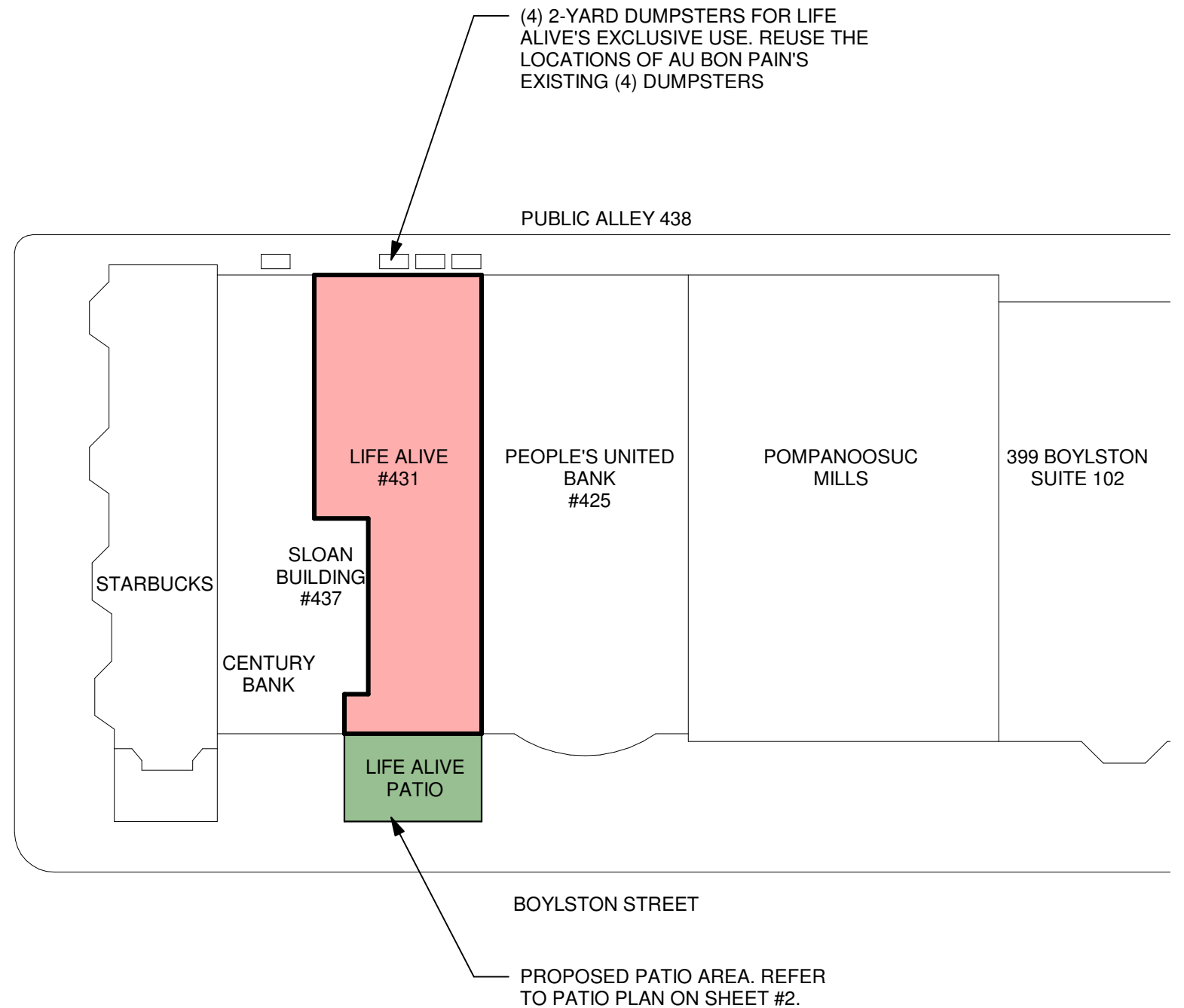
Megan Baxter
142 Crescent Street
Brockton, MA 02302
508-583-5603 ext 315
mbaxter@bkaarchs.com

DPB DESIGN CONSULTANTS

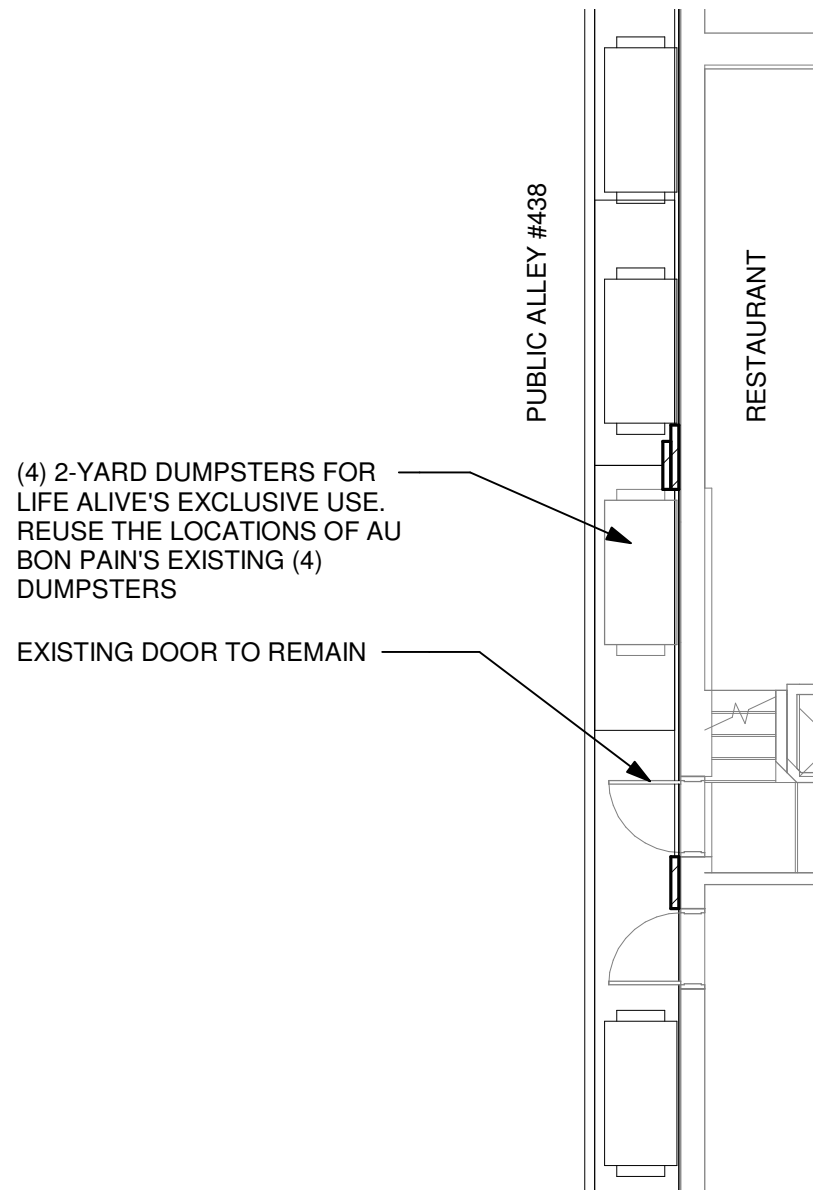
Daniel Brennan, Jr
50 Holt Road
Andover, MA 01810
603-505-5633
dpbpermits@gmail.com



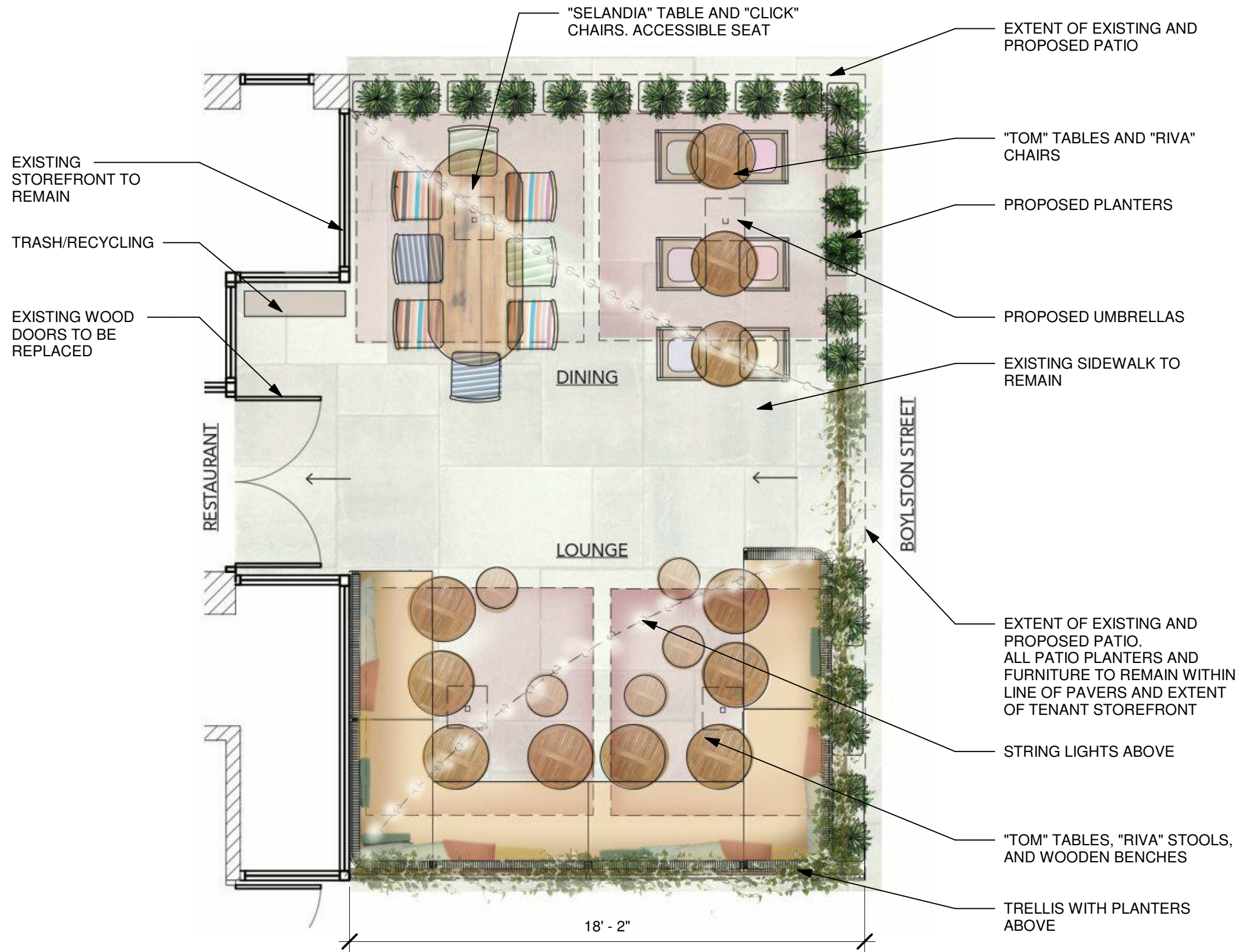
LOCUS MAP



SITE PLAN



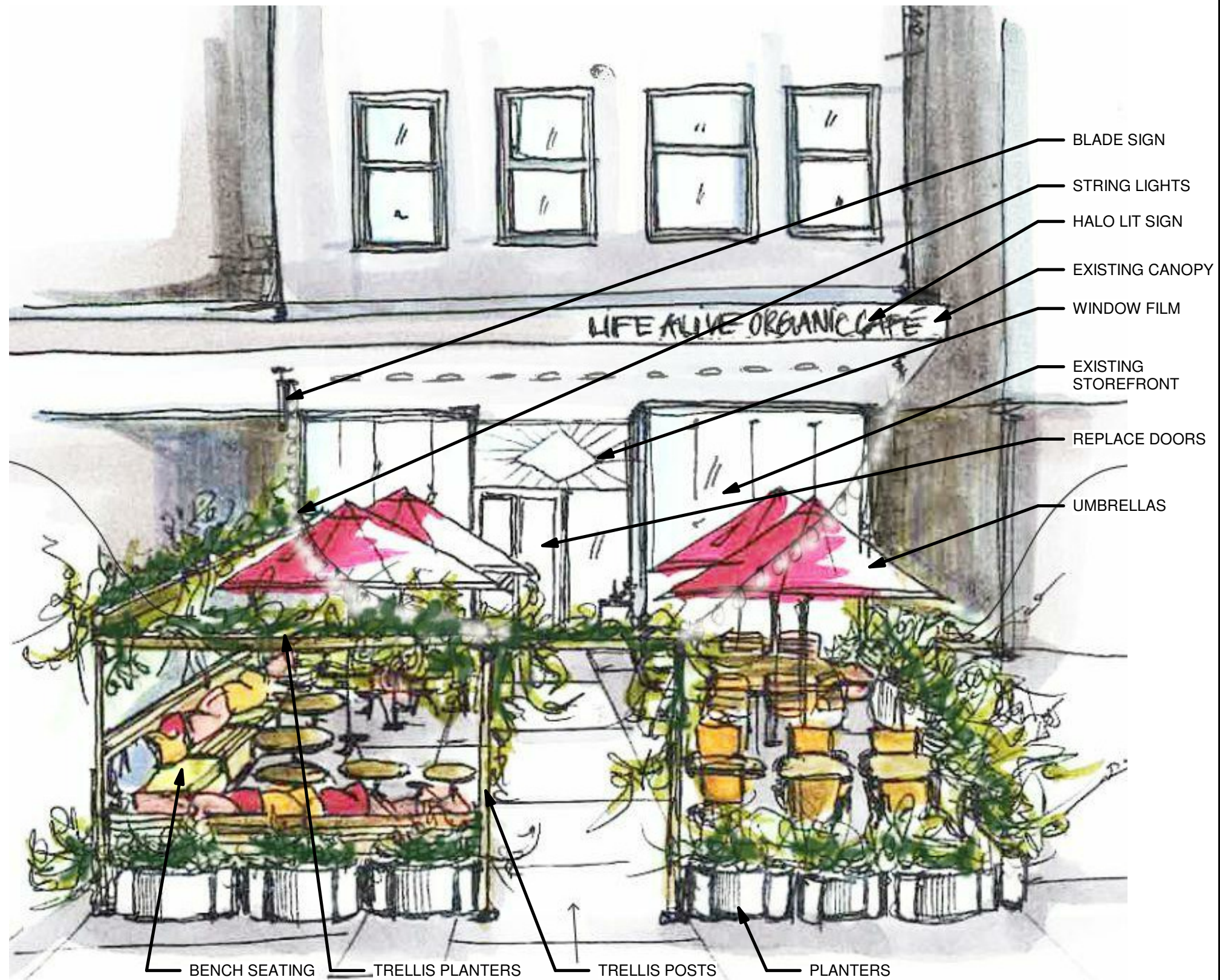
FLOOR PLAN - REAR



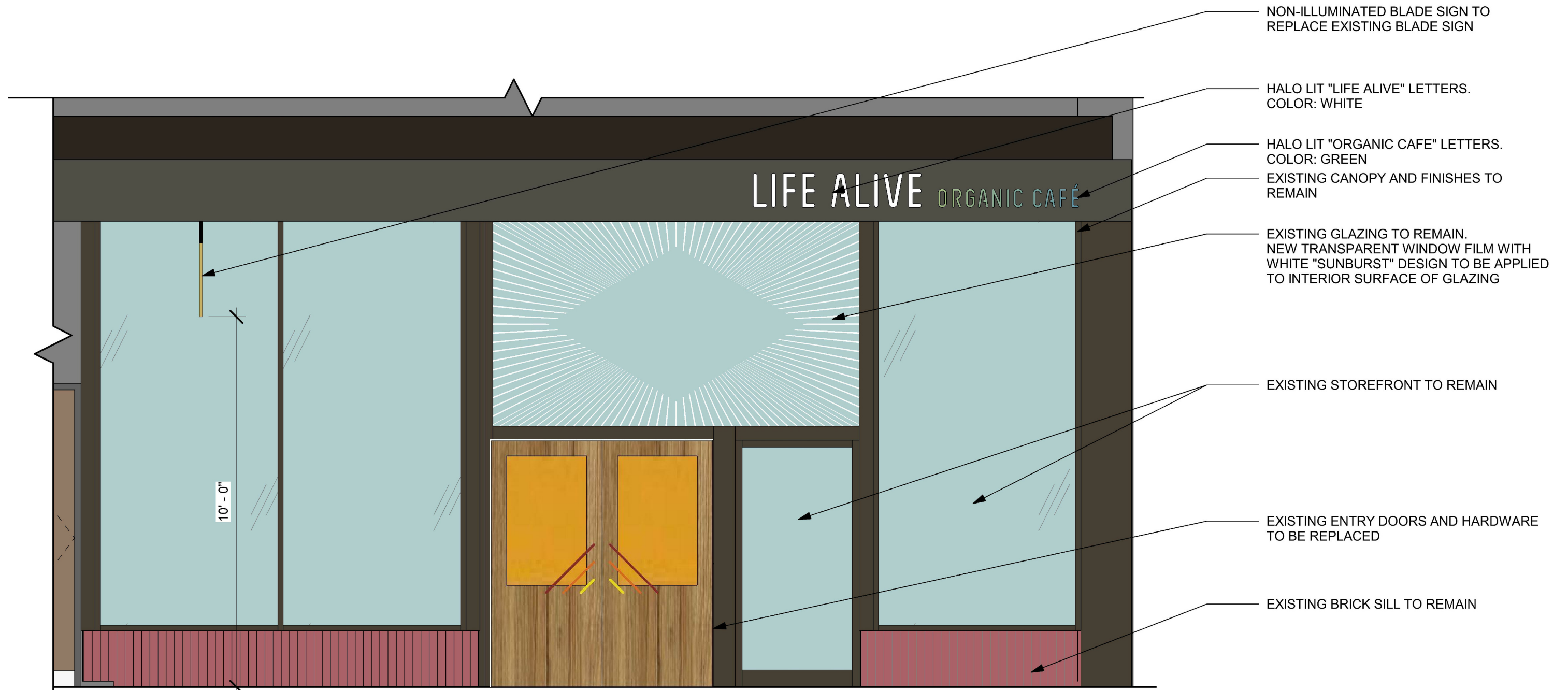
FLOOR PLAN - FRONT



EXISTING EXTERIOR PHOTOS



PROPOSED EXTERIOR SKETCH

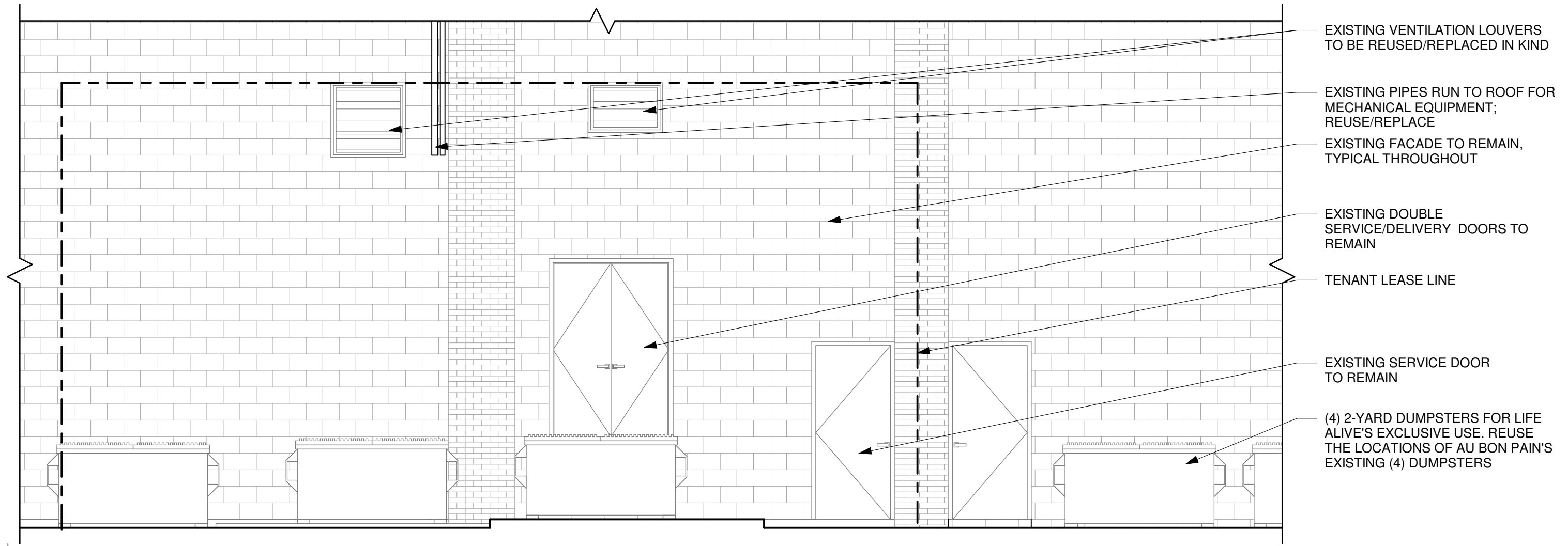


- NON-ILLUMINATED BLADE SIGN TO REPLACE EXISTING BLADE SIGN
- HALO LIT "LIFE ALIVE" LETTERS. COLOR: WHITE
- HALO LIT "ORGANIC CAFE" LETTERS. COLOR: GREEN
- EXISTING CANOPY AND FINISHES TO REMAIN
- EXISTING GLAZING TO REMAIN. NEW TRANSPARENT WINDOW FILM WITH WHITE "SUNBURST" DESIGN TO BE APPLIED TO INTERIOR SURFACE OF GLAZING
- EXISTING STOREFRONT TO REMAIN
- EXISTING ENTRY DOORS AND HARDWARE TO BE REPLACED
- EXISTING BRICK SILL TO REMAIN

NOTE: THE PREVIOUS TENANT (AU BON PAIN) IS TO REMOVE ALL EXISTING SIGNAGE, AWNING AND PATIO FURNITURE UPON VACATING THE SPACE. EXISTING EXTERIOR ELEMENTS ARE TO BE PATCHED AND REPAIRED TO MATCH EXISTING, AS NECESSARY.



REAR EXTERIOR PHOTOS



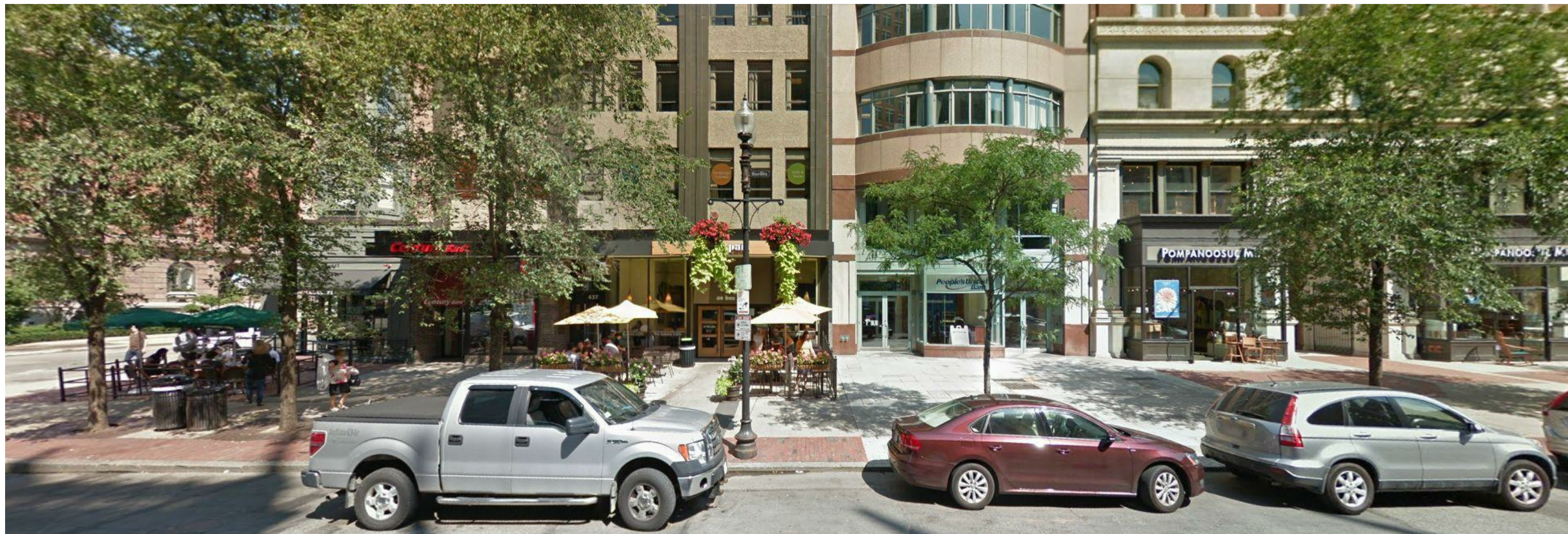
REAR EXTERIOR ELEVATION



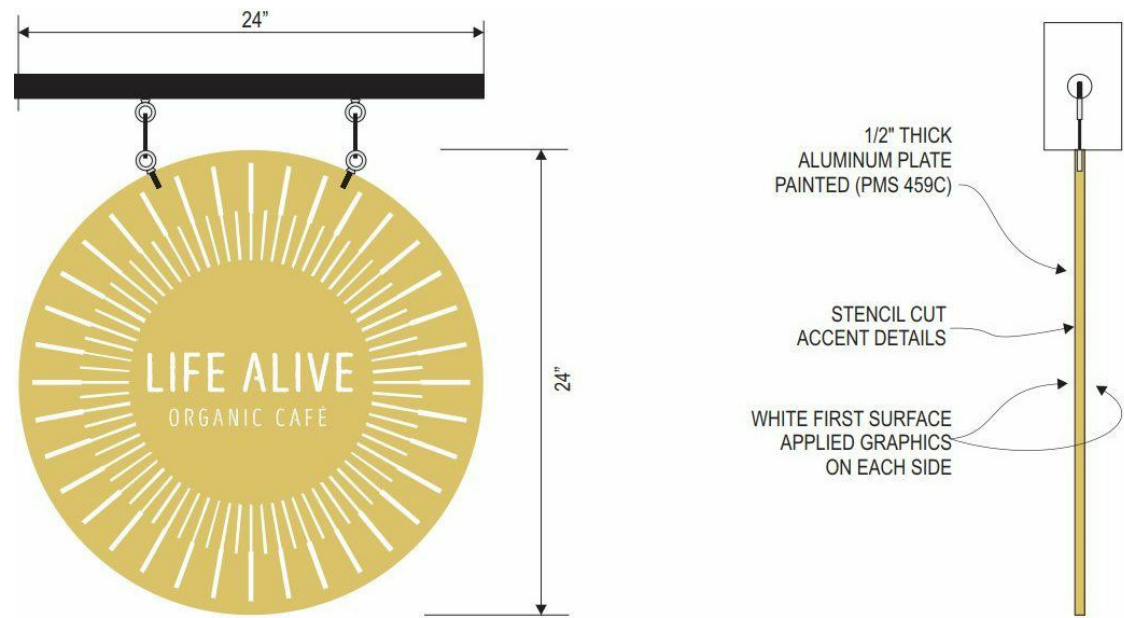
"GLOBE" PATIO - 567 BOYLSTON STREET
 STRING LIGHTS SUSPENDED OVER PATIO



EXISTING ADJACENT BLADE SIGNS



FROM LEFT TO RIGHT: STARBUCKS, CENTURY BANK, SLOANE BUILDING ENTRANCE, AU BON PAIN (FUTURE LIVE ALIVE), PEOPLE'S UNITED BANK, POMPANOOSUC MILLS



BLADE SIGN NOTES:

- "LIFE ALIVE": HIGH PERFORMANCE WHITE VINYL
- "ORGANIC CAFE": HIGH PERFORMANCE WHITE VINYL
- BACKGROUND: 1/2" THICK ALUMINUM CIRCLE PAINTED (TO MATCH PMS 459C)
- BRACKET: ALUMIN

SIGNAGE CALCULATIONS		
	ALLOWABLE	ACTUAL
PRIMARY SIGN		11" x 105.5" = 8.1 SF
BLADE SIGN	AREA: 24 SF MAX MOUNTING HEIGHT: 10'-0" MIN	AREA: 24" x 24" = 4.0 SF MOUNTING HEIGHT: 10'-0"
WINDOW GRAPHIC*	30% MAX OF GLASS AREA	GLASS AREA = 300 SF SIGN AREA = 55 SF PERCENTAGE = 18.3% OPAQUE AREA = 6.7 SF
TOTAL	2 SF PER EACH LF FRONTAGE = 2 x 28.3' = 56.6 SF	18.8 SF*

*NOTE: WINDOW GRAPHIC DOES NOT CONTAIN ANY LETTERING AND IS PRIMARILY TRANSPARENT. THE TOTAL SIGNAGE AREA INCLUDES THE OPAQUE PORTION OF THE WINDOW GRAPHIC.

NON-ILLUMINATED BLADE SIGN



HALO ILLUMINATED CHANNEL LETTERS SIGN:

- STAINLESS STEEL FACES WITH 1" STAINLESS STEEL RETURNS
- "LIFE ALIVE" TO BE PAINTED WHITE
- "ORGANIC CAFE" TO BE PAINTED A GRADIENT FROM PMS 5787C ("O") TO PMS 322C ("E")
- 5000K WHITE LED LIGHTS
- CLEAR LEXAN BACKS
- LOW VOLTAGE OUTPUT POWER SUPPLIES
- EXISTING FINISH ON CANOPY FACE TO REMAIN

HALO-LIT LETTERS - PRIMARY SIGNAGE

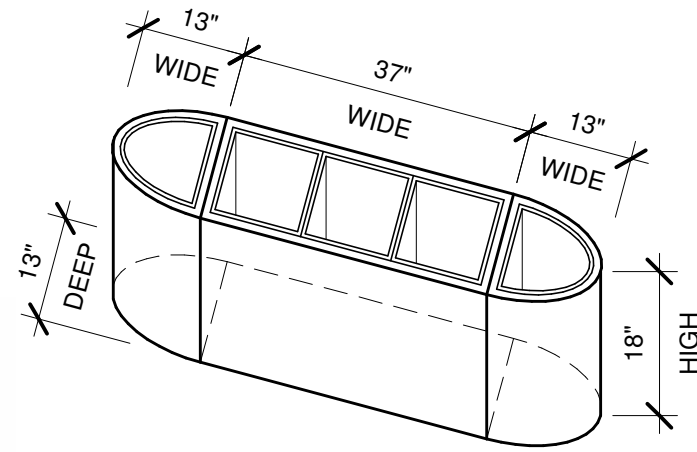
DINING & LOUNGE



OUTDOOR STRING LIGHTS/
VARIOUS SOURCES, E.G. CRATE & BARREL
(image as a reference of mounting option)



QTY. 4
METTAL SUN UMBRELLA /
KETTAL
METTAL SUN
UMBRELLA / KETTAL



CITYSCAPE PLANTERS
/ WESTELM **QTY. 11**

DINING



QTY. 1
SELANDIA TABLE / DANISH DESIGN STORE



QTY. 8
CLICK DINING CHAIR WITH ARMREST /
DANISH DESIGN STORE

LOUNGE



INSPIRATION REFERENCE FOR
LOOSE WOODEN BENCHES AND
ELEVATED PLANTERS



RIVA STOOL /
KETTAL



LOUNGE PILLOW INSPIRATION AND REFERENCE
/ KETTAL - BITTA



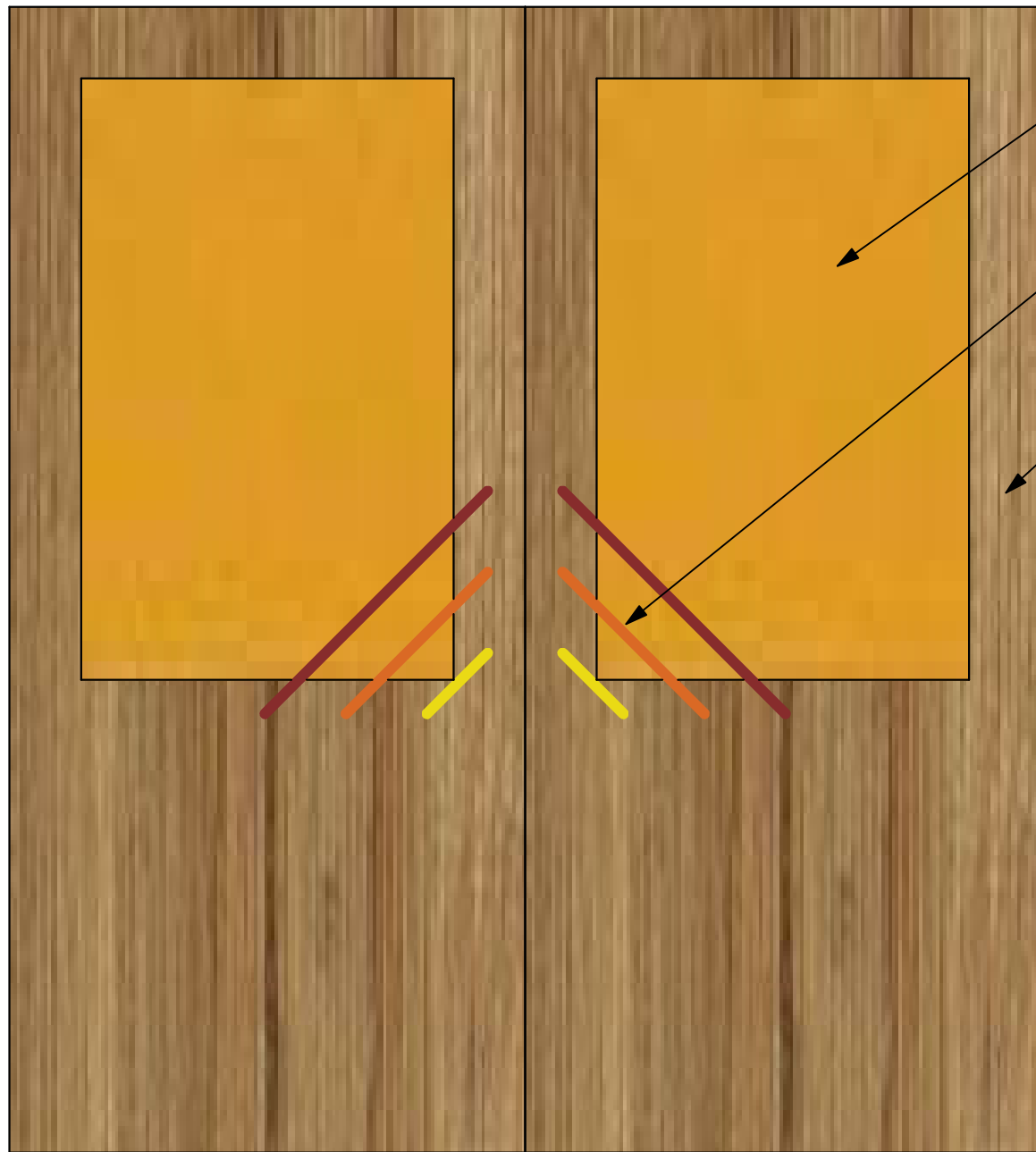
RIVA DINING CHAIR / KETTAL **QTY. 6**



TOM 144O TABLE TOP /
EMU CONTRACT **QTY. 3**



MAX 1354 BASE /
EMU CONTRACT **QTY. 3**



AMBER TINTED GLASS

CUSTOM METAL DOOR PULLS.

WIDE STILE NATURAL WOOD DOORS

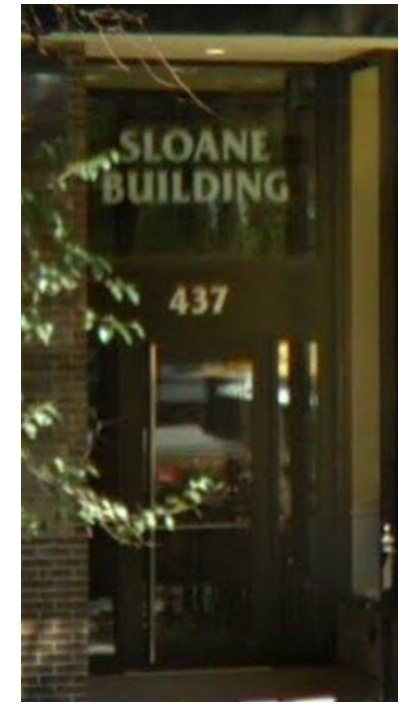
New Door:
Natural wood



New Glass:
Amber tinted glass



New Hardware design:
3 diagonal bars per door side.
Finish: Metal
Color: Yellow, Orange, Red



EXISTING ENTRY DOORS IN BUILDING

PROPOSED DOOR