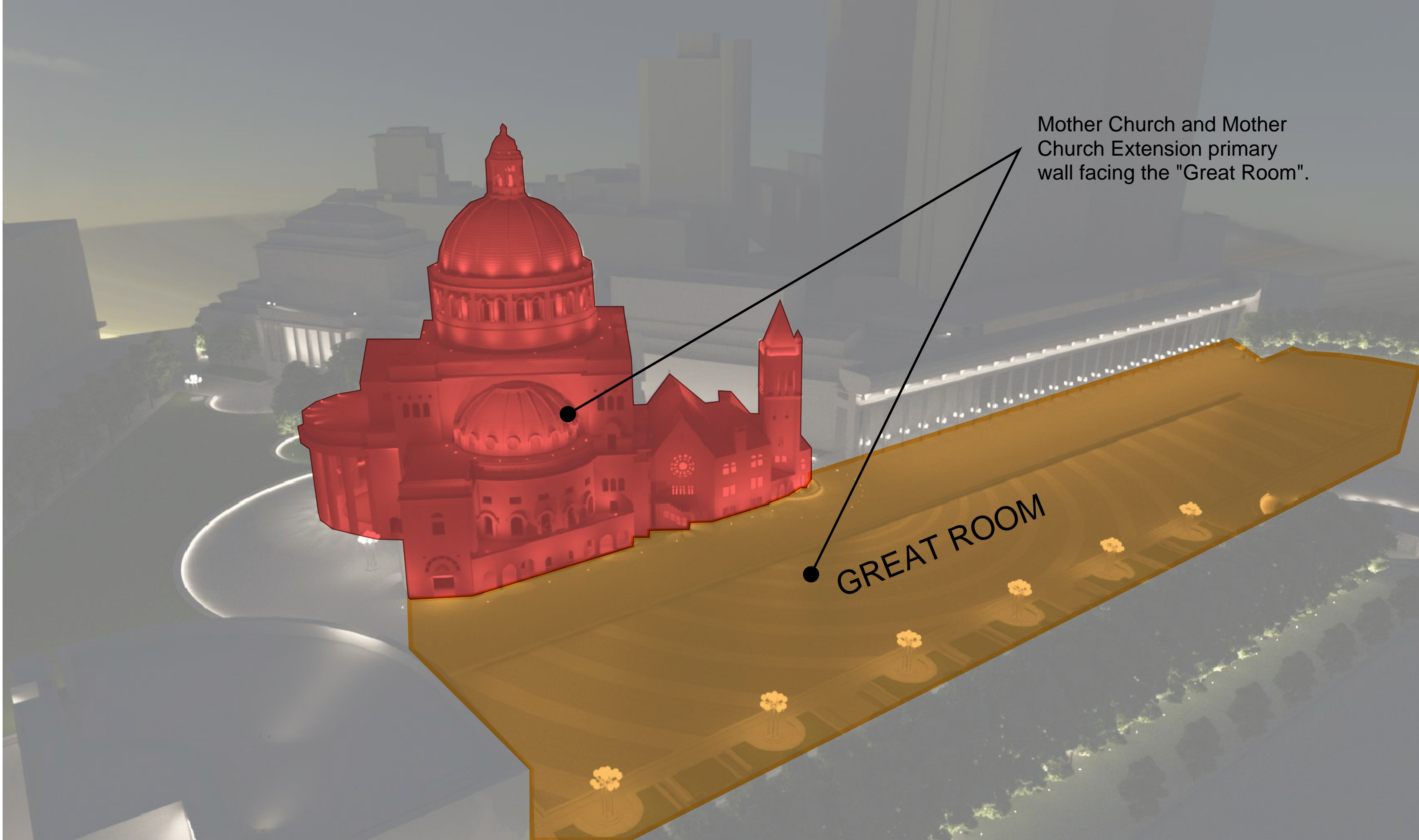




THE FIRST CHURCH OF CHRIST, SCIENTIST
EXTERIOR LIGHTING PROJECT
BLC PRESENTATION
September 25, 2018



Mother Church and Mother Church Extension primary wall facing the "Great Room".

GREAT ROOM

Primarily illuminated from the outside, no internal illumination.

Soft washes on the exterior to help frame the internally illuminated stained glass throughout.

TMCX

TMCO

Dramatic Reflections in the Pool

REFLECTING POOL

Softer Reflections in the Pool

Key Design Aspects:

- Color temperature of lighting unified for both buildings.
- Careful attention to how light would reflect in reflecting pool.



EXISTING

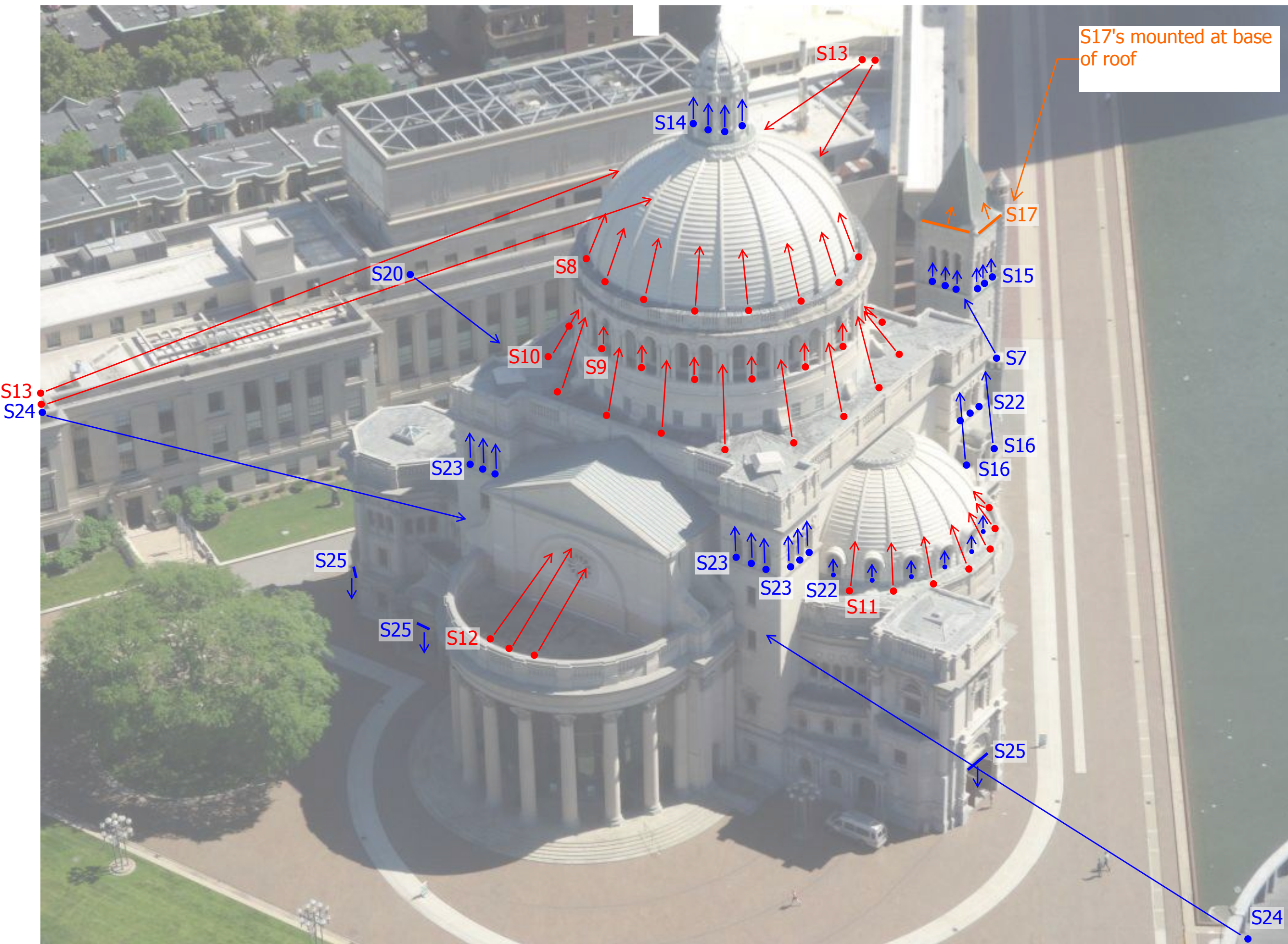
- CURRENTLY THE MOTHER CHURCH IS IN SILHOUETTE TO THE EXTENSION

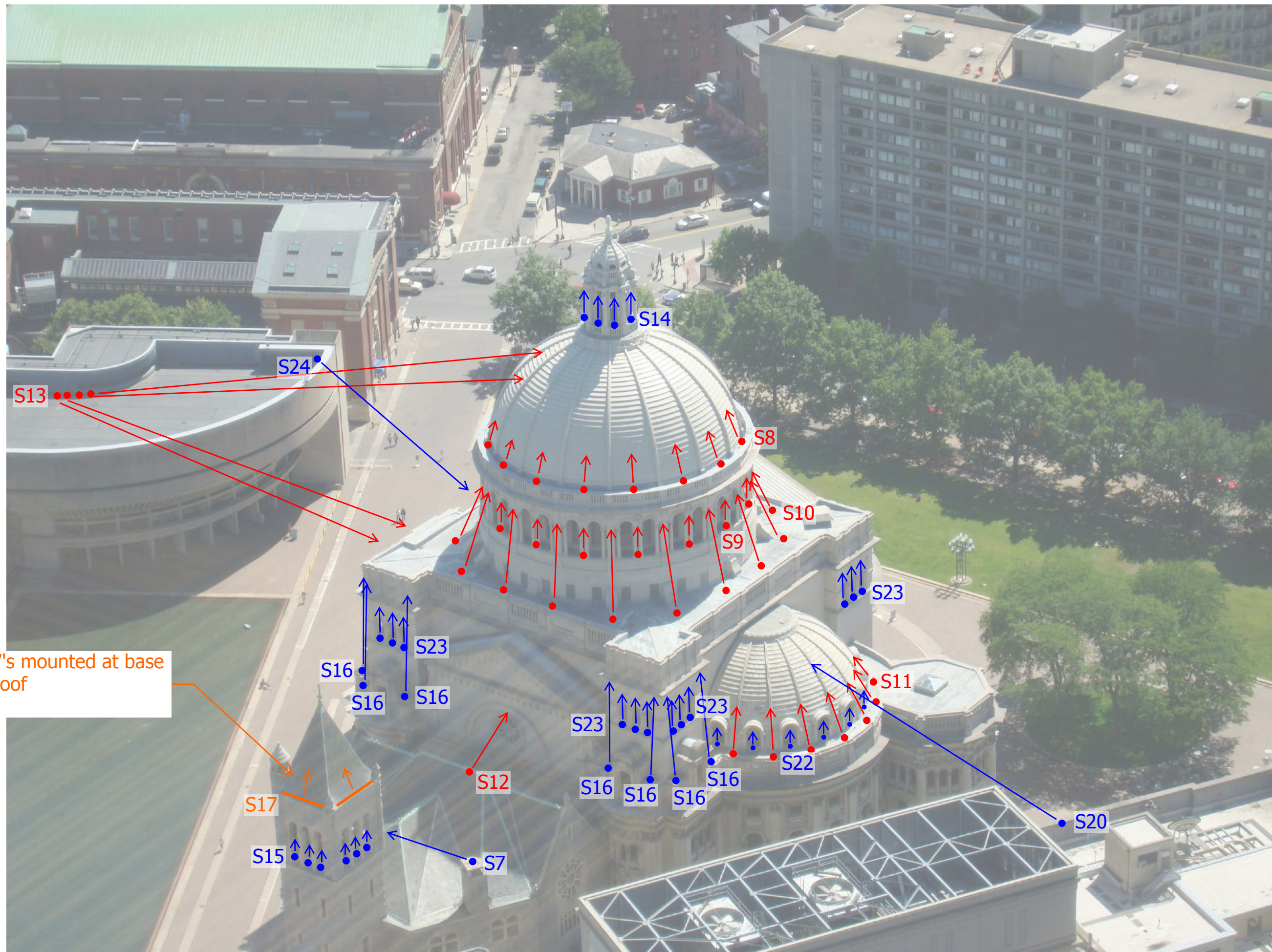




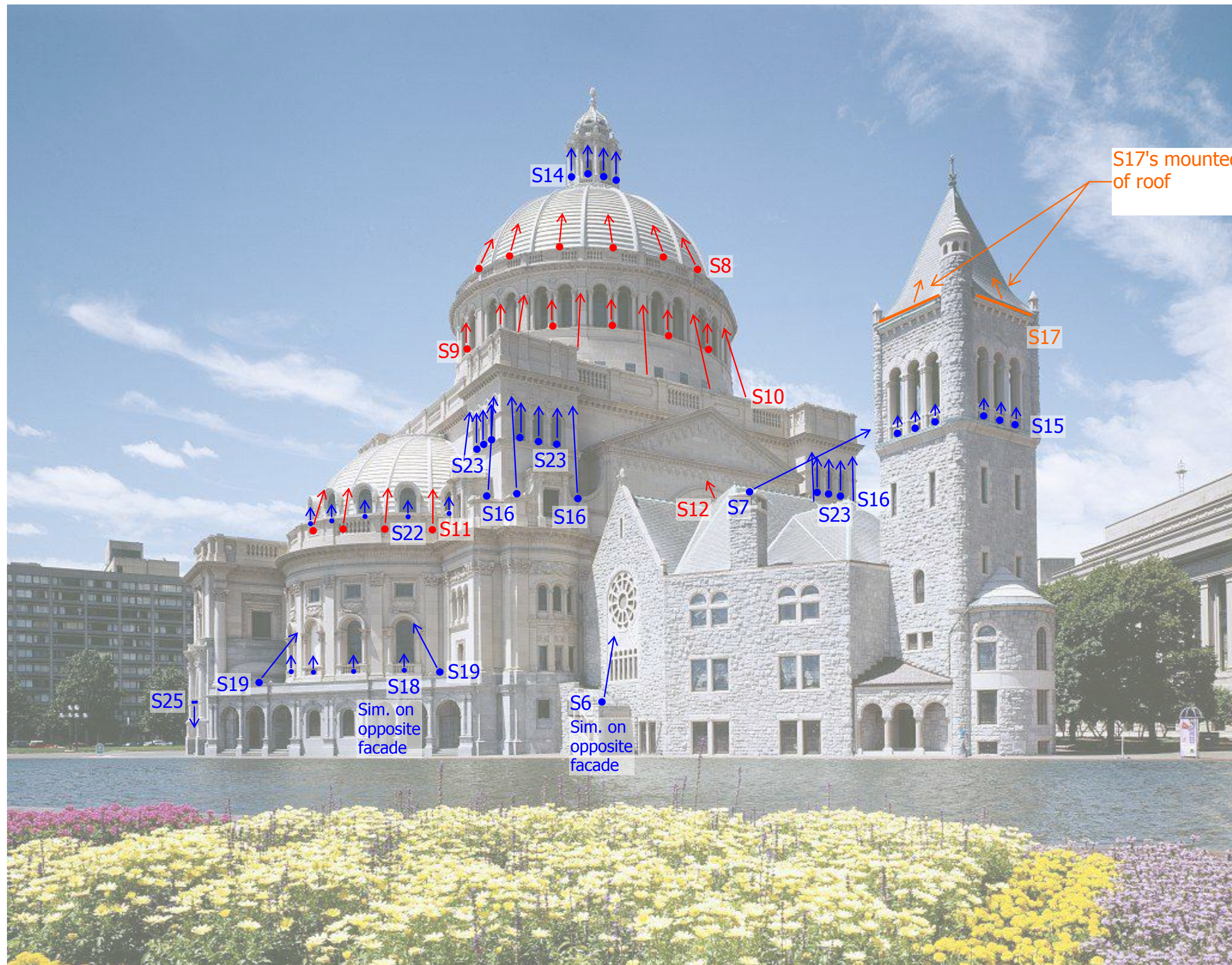








S17's mounted at base of roof



S17's mounted at base of roof

S14

S8

S9

S10

S17

S15

S23

S23

S12

S7

S16

S16

S22

S11

S19

S18

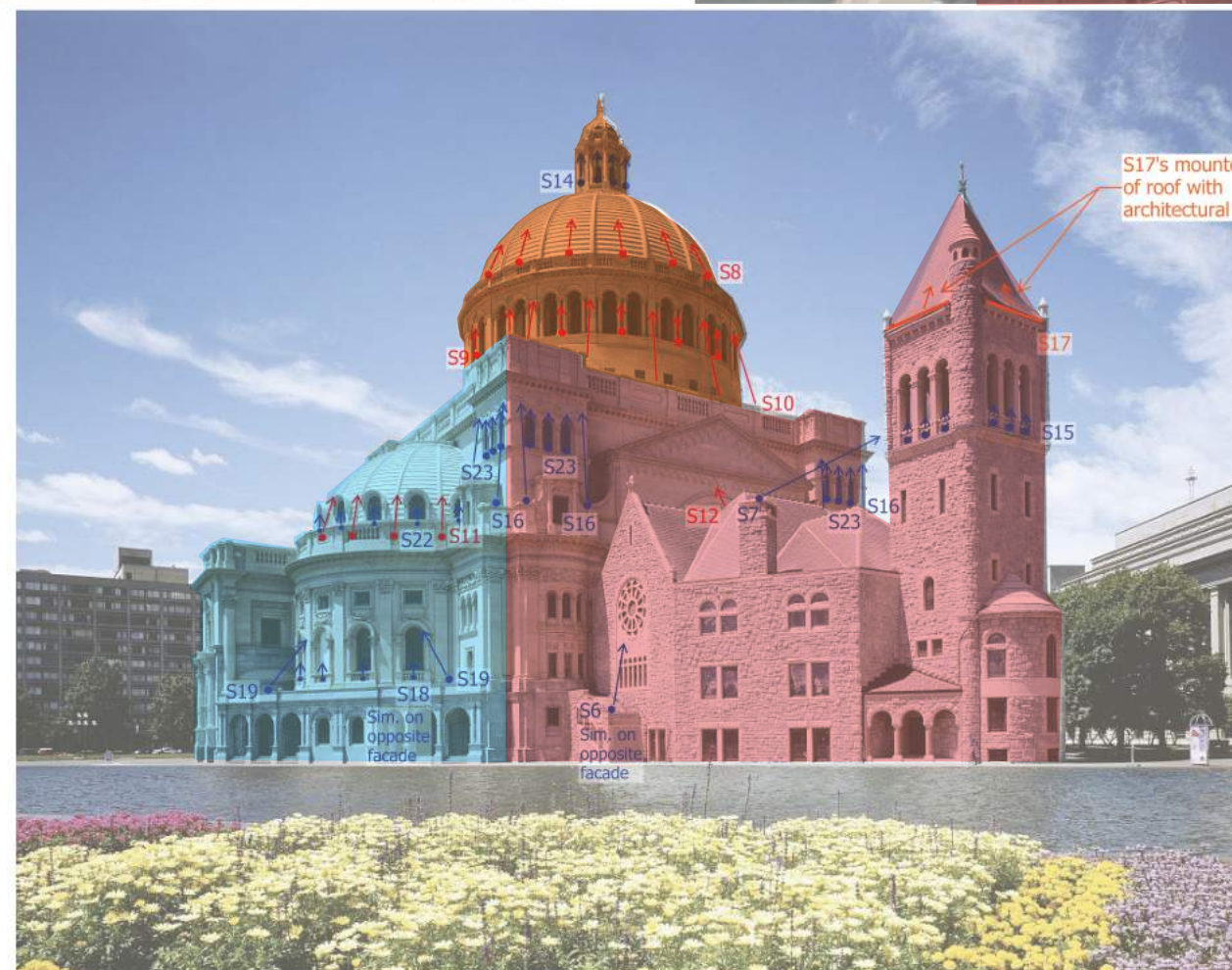
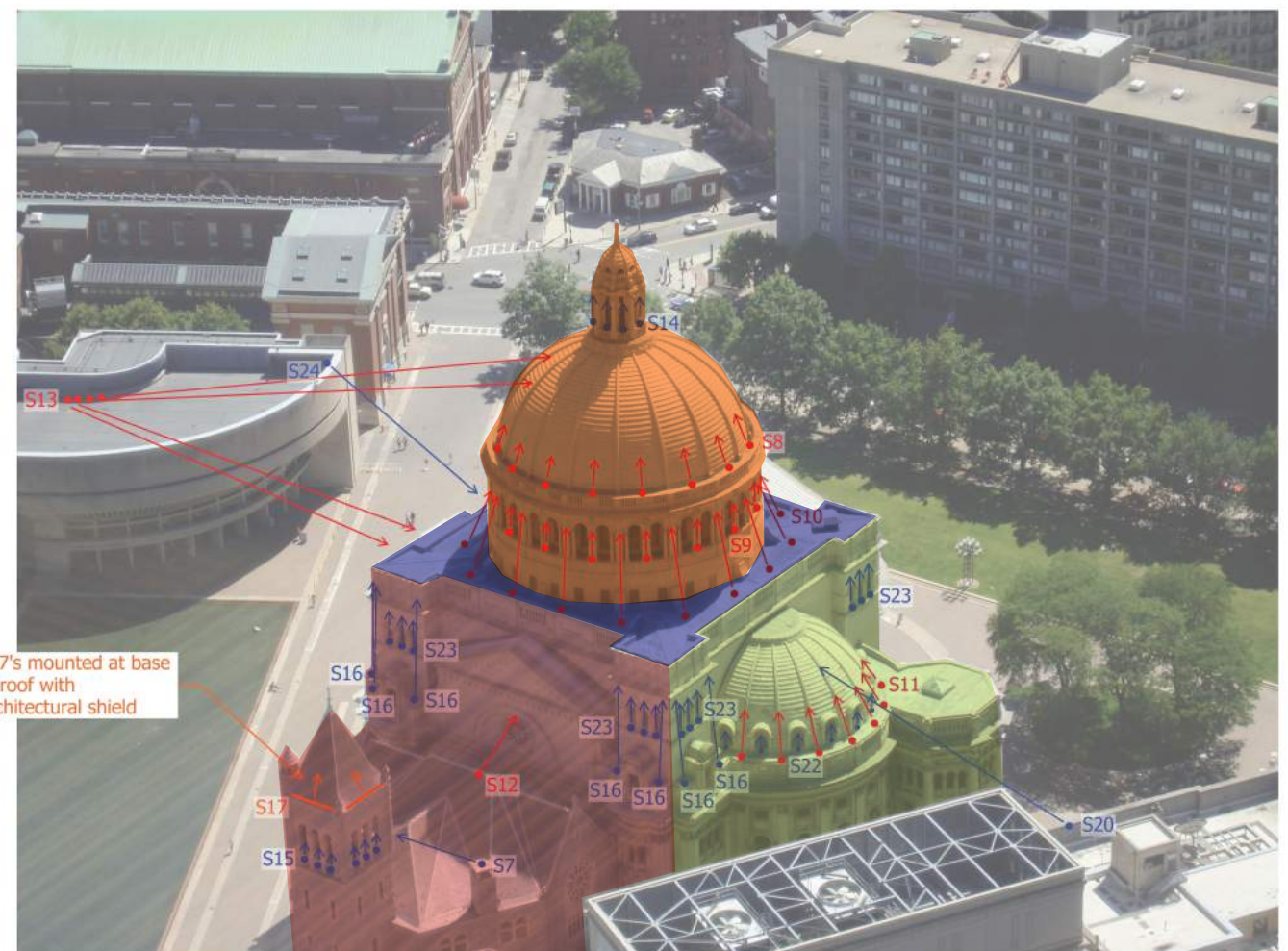
S19

S25

S6

Sim. on opposite facade

Sim. on opposite facade



- PHASE 2
- PHASE 3
- PHASE 4
- PHASE 5
- PHASE 6



S17's mounted at base of roof with architectural shield

PHASE 2

THE MOTHER CHURCH ORIGINAL (TMC0) THE MOTHER CHURCH EXTENSION (TMCX)

S18's in lower windows

S25 mounted at egress door

PHASE 4

S23's mounted on sill, centered on window, typ.

S25 mounted at egress door

S18's in lower windows

S25's mounted at egress door

PHASE 3

LEGEND

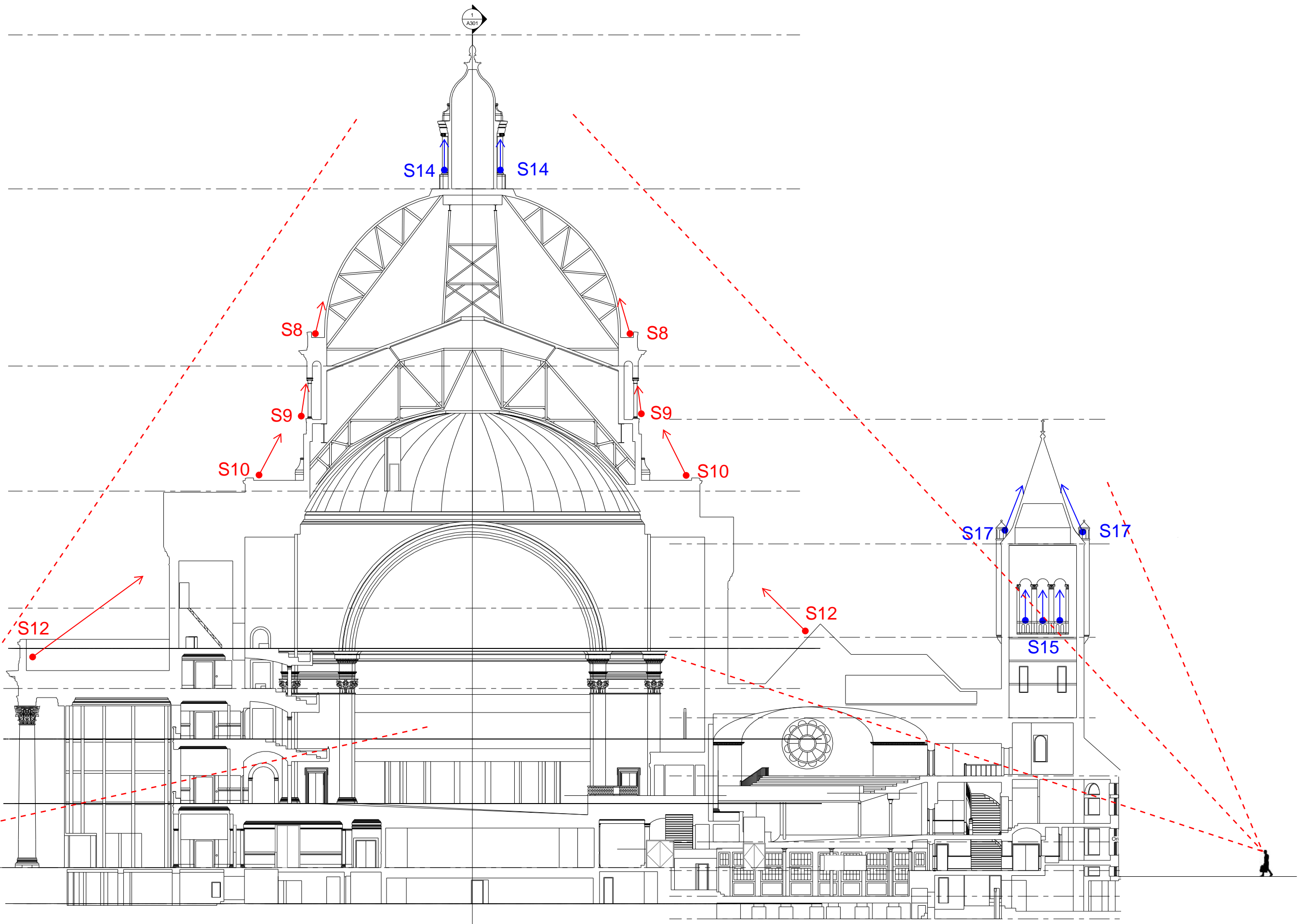
[Light Gray Box]	PHASE 2
[Medium Gray Box]	PHASE 3
[Dark Gray Box]	PHASE 4
[Hatched Box]	AREA NOT IN BID PACKAGE

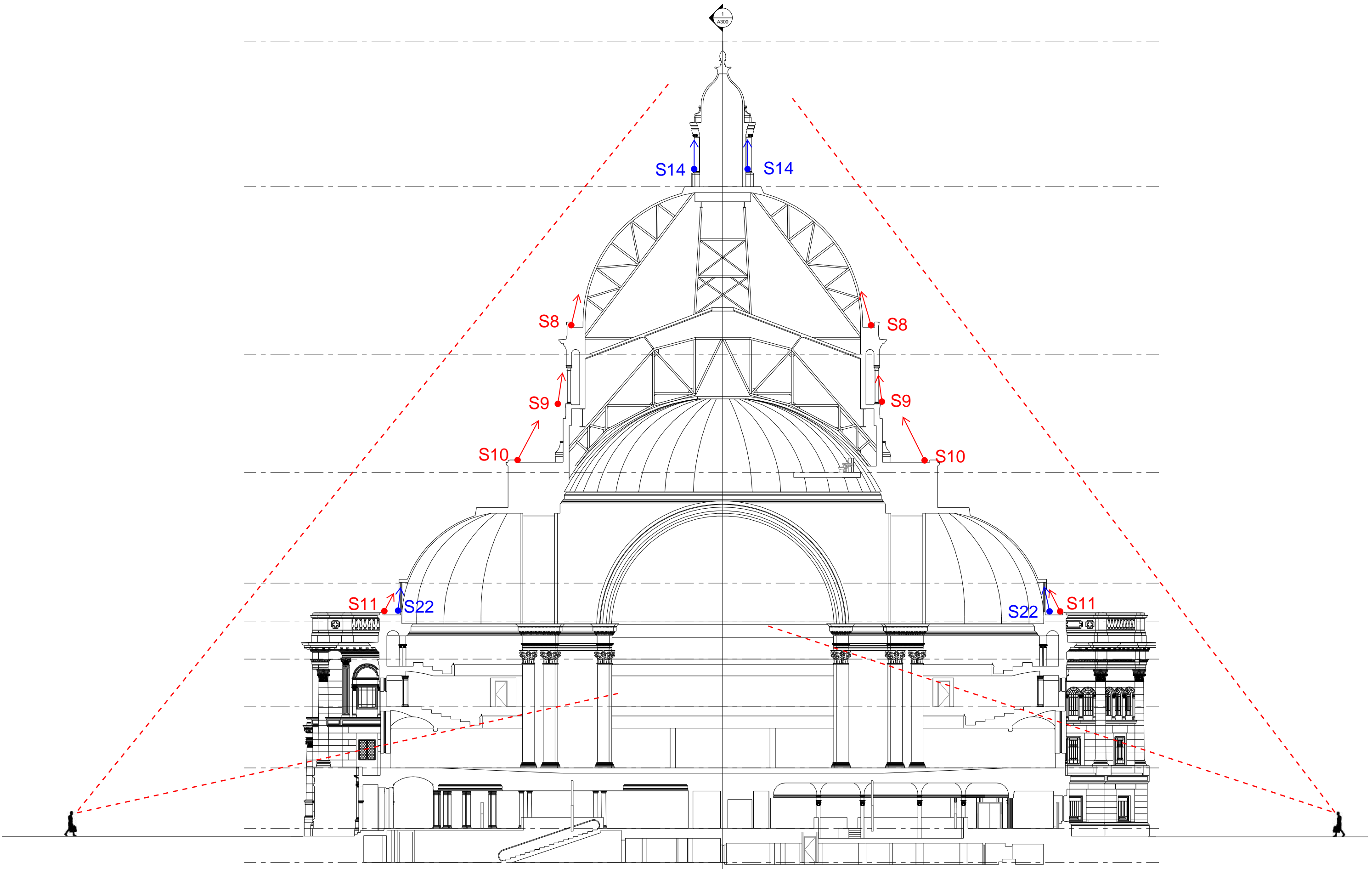
NOTES:

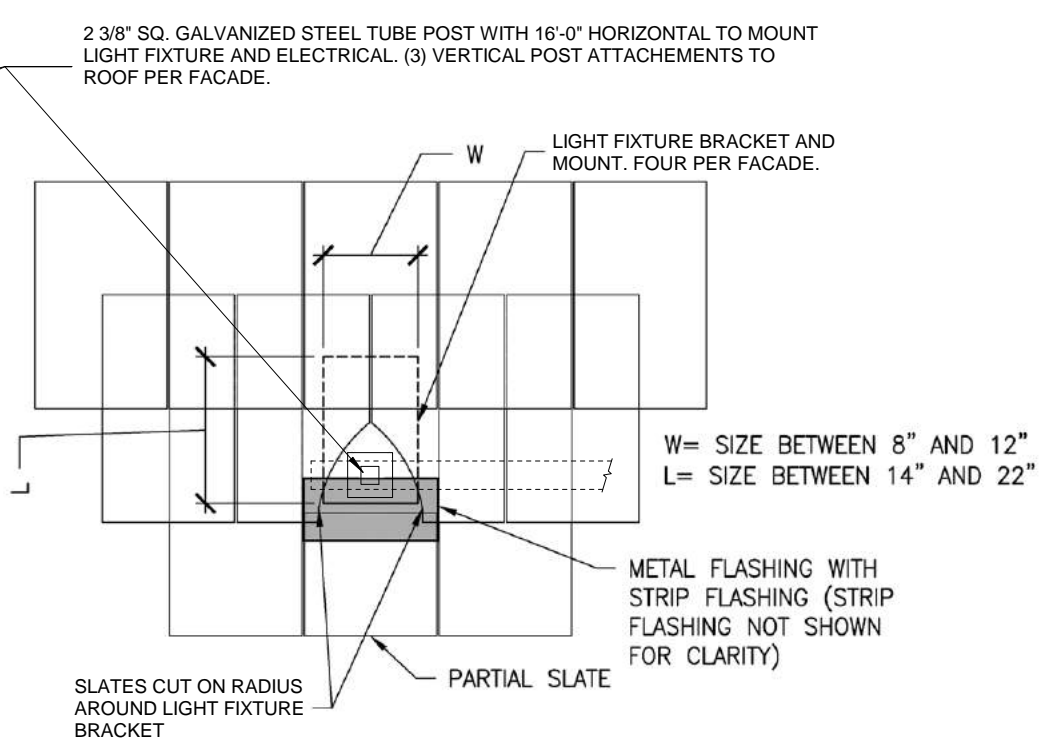
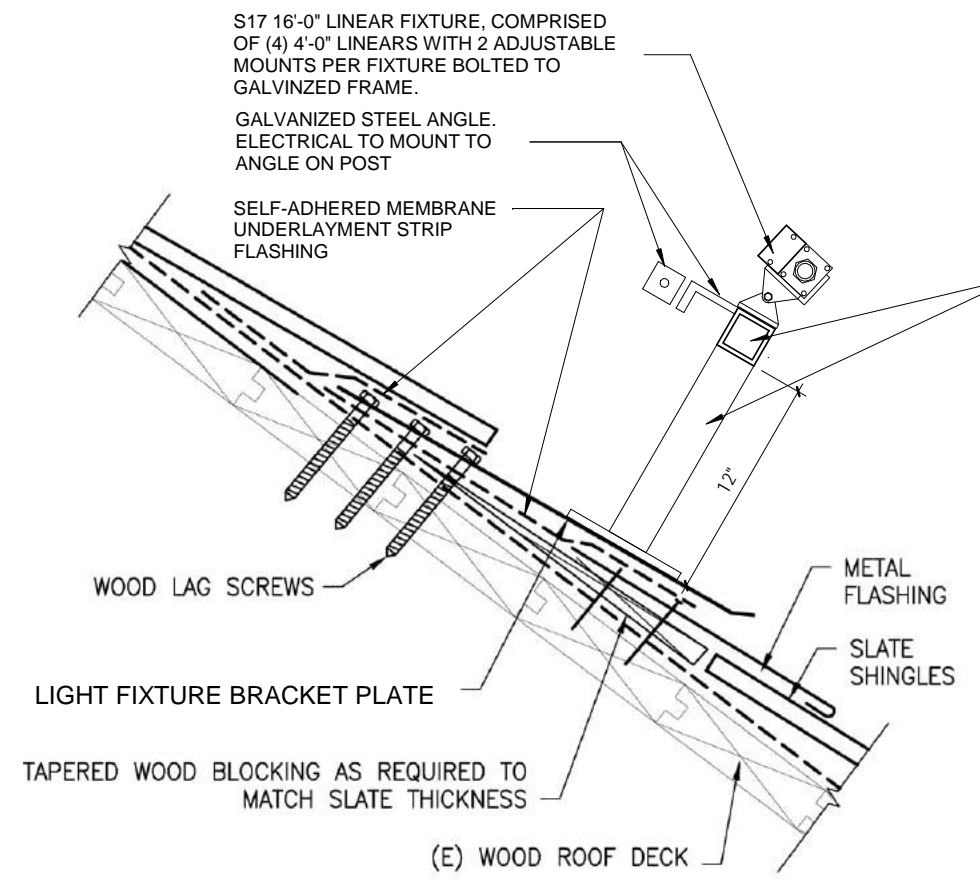
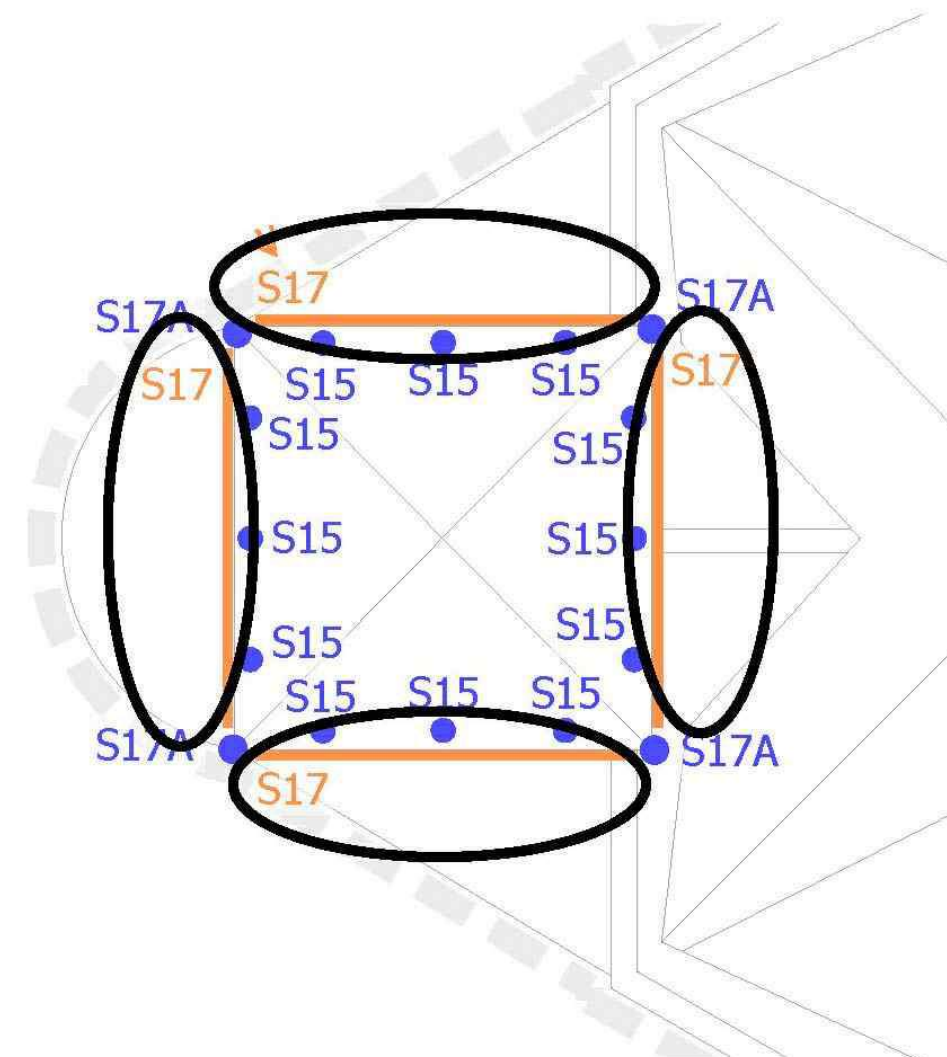
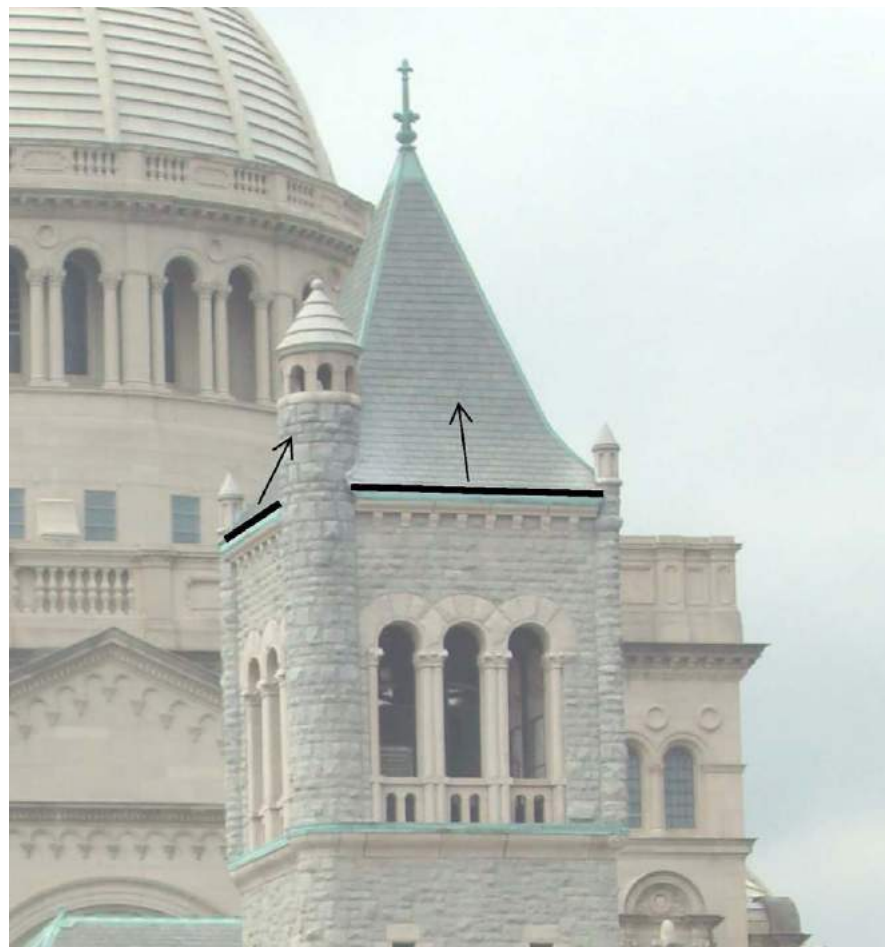
1. KEY PLAN SHOWN FOR REFERENCE ONLY; SEE PARTIAL PLANS AND ELEVATIONS FOR SCOPE OF WORK. REFER TO PROJECT AREA AND BUILDING FEATURE KEY PLAN ON G01-100.
2. DRAWING SCALE AND DIMENSIONS ARE PROVIDED FOR REFERENCE ONLY. FIELD VERIFY.

- Red fixtures are existing that are to be replaced with new LED fixtures
- Blue fixtures are new locations with new LED fixtures, that need new power feeds and control
- New fixtures with custom architectural enclosures or mounting

LIGHT FIXTURE LAYOUT PLAN

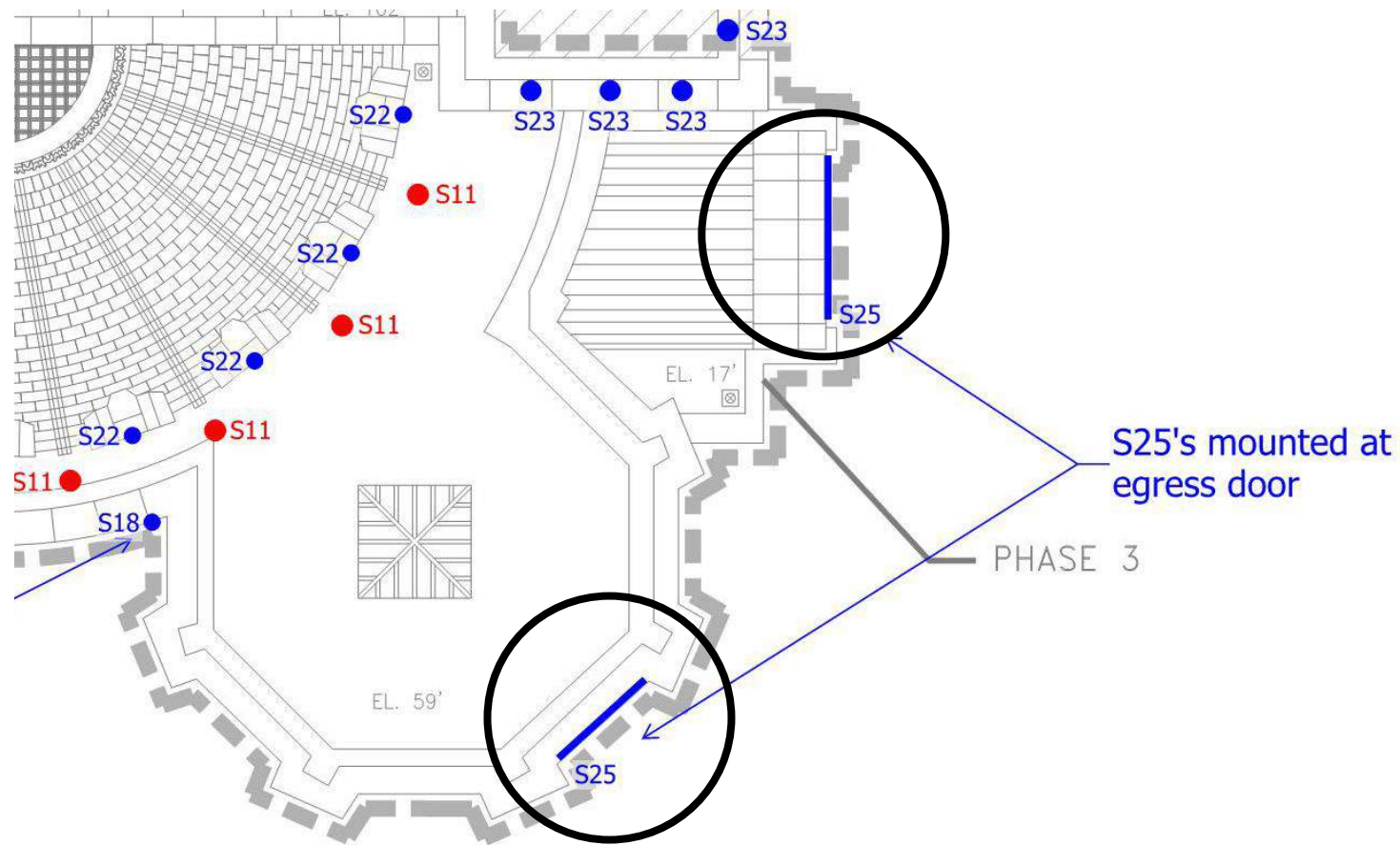




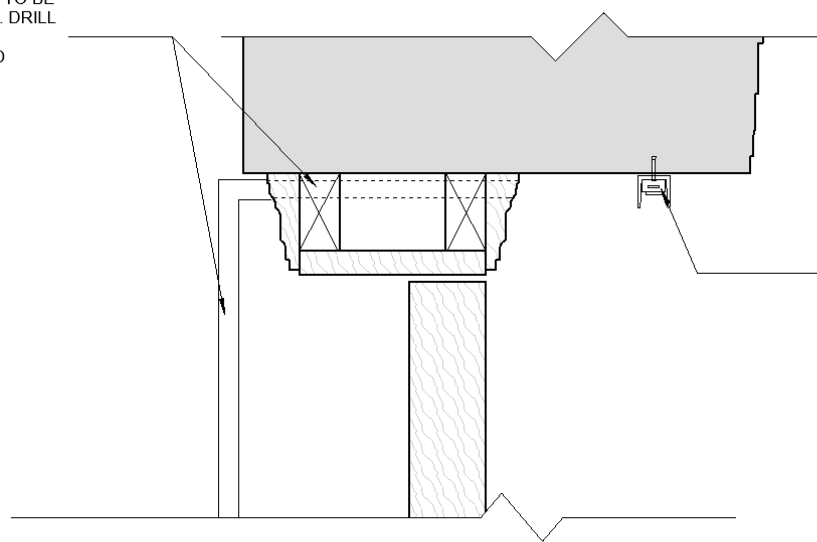


S17 - Exterior LED Light Fixture Mounting Detail
 1 1/2" = 1'-0"

MOUNTING DETAIL AT TOWER

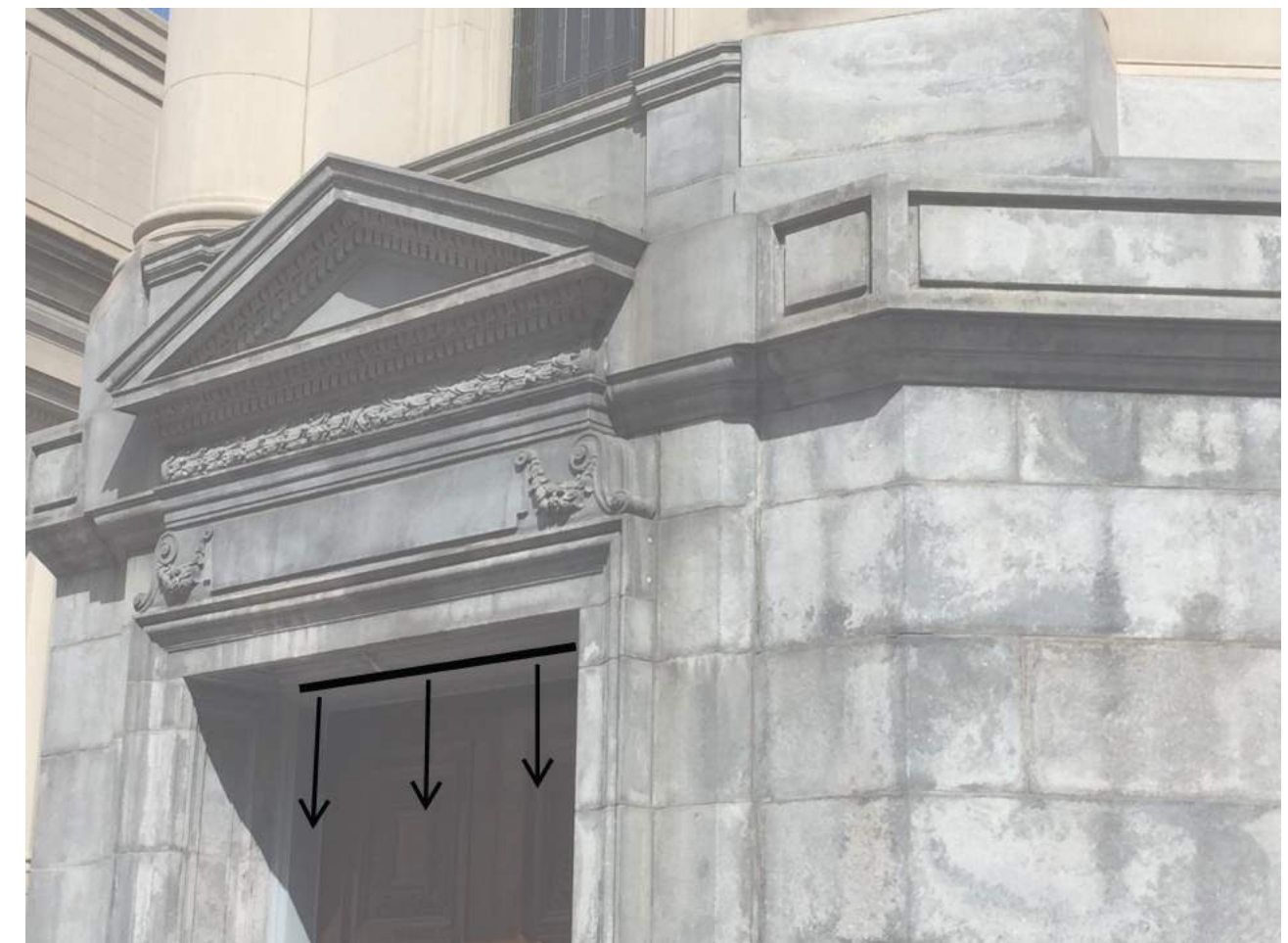


EXPOSED WIREMOLD WITH VESTIBULE TO BE ROUTED FROM FLOOR TO DOOR HEAD. DRILL HOLE IN EXISTING WINDOW FRAME TO ROUTE WIRING TO SURFACE MOUNTED FIXTURE. FILL WITH SEALANT.



S25 LED LINEAR TAPE LIGHT SET IN 1" X 1" CHANNEL MOUNTED TO STONE HEADER WITH FLUSH MOUNT MASONRY ANCHORS.

S25 - Exterior LED Egress Lighting Fixture Mounting Detail - Typical
3" = 1'-0"



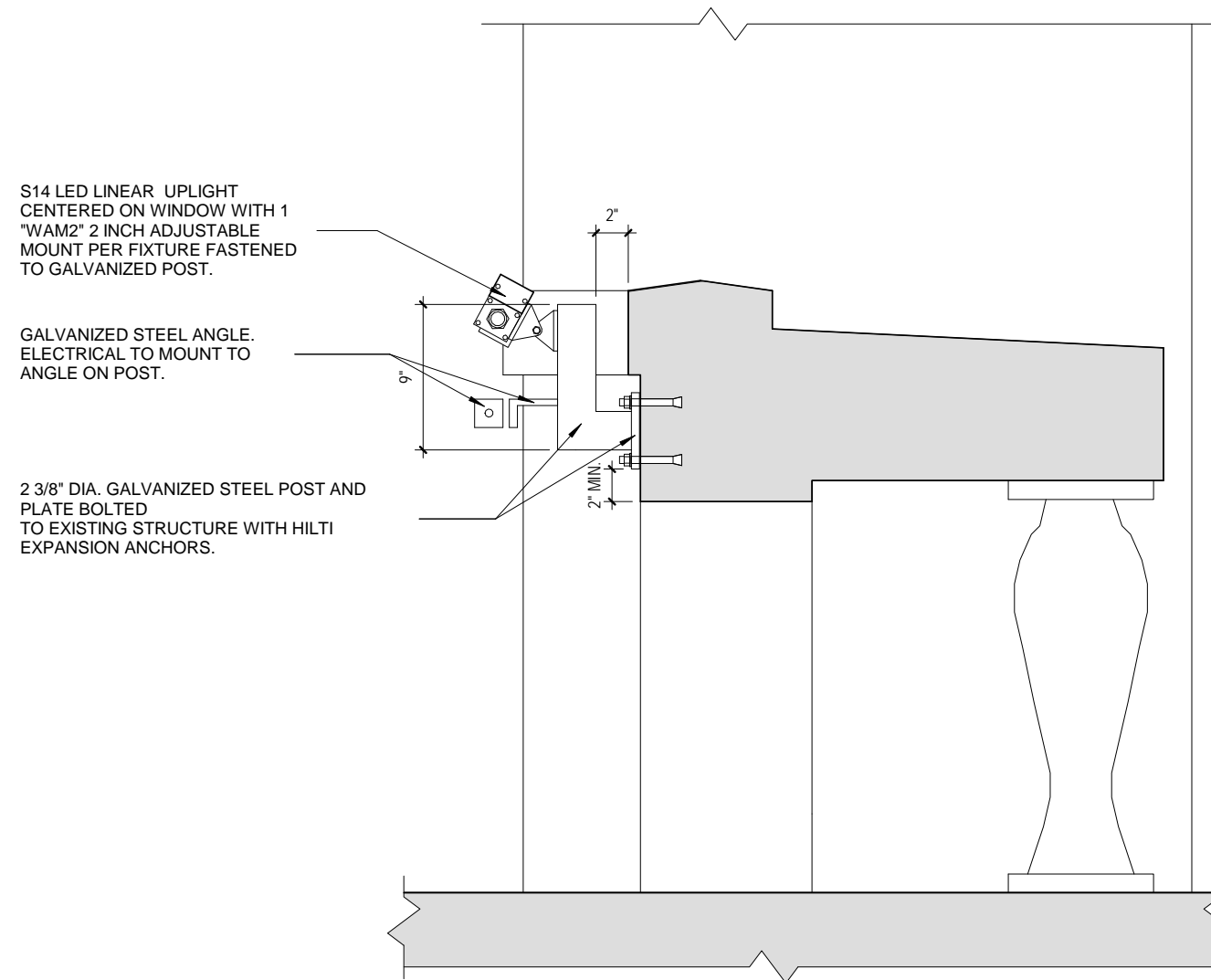
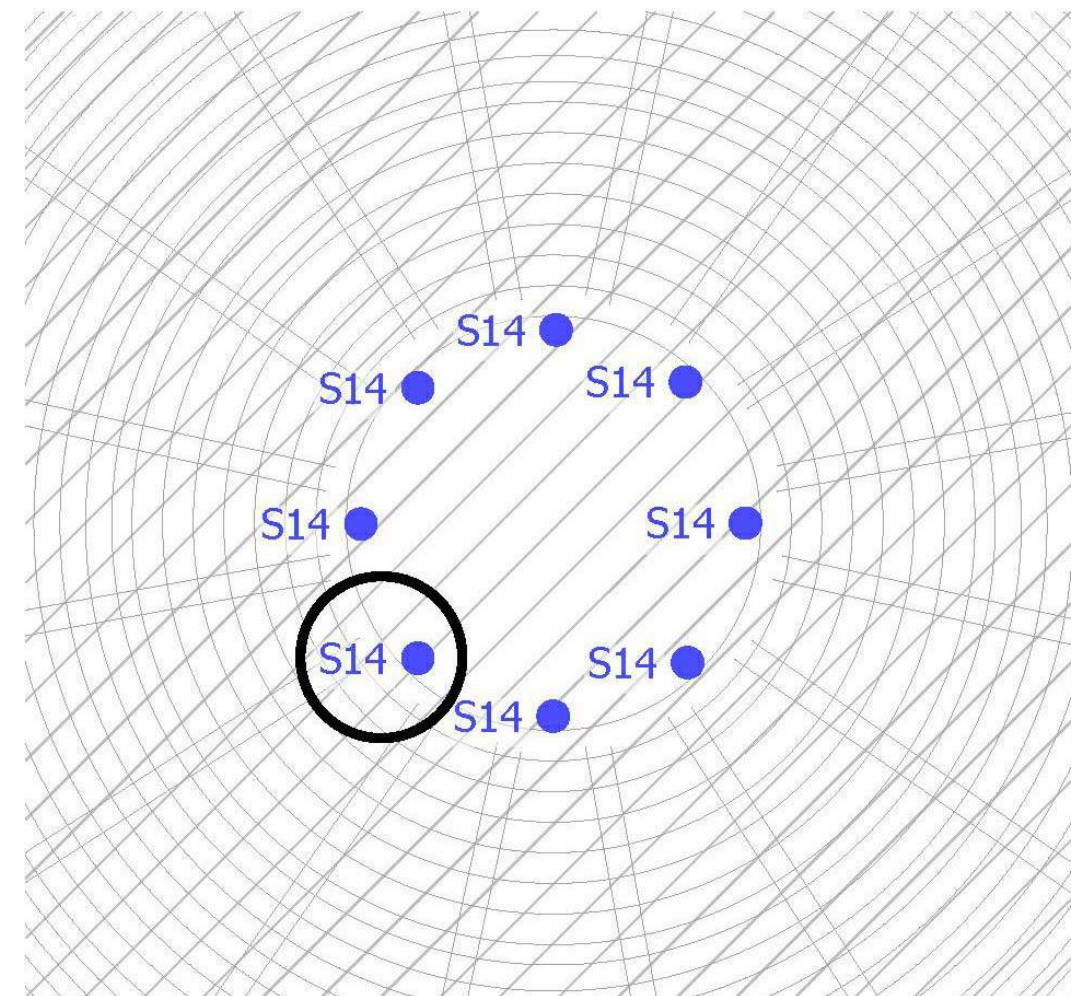
MOUNTING DETAIL AT EGRESS



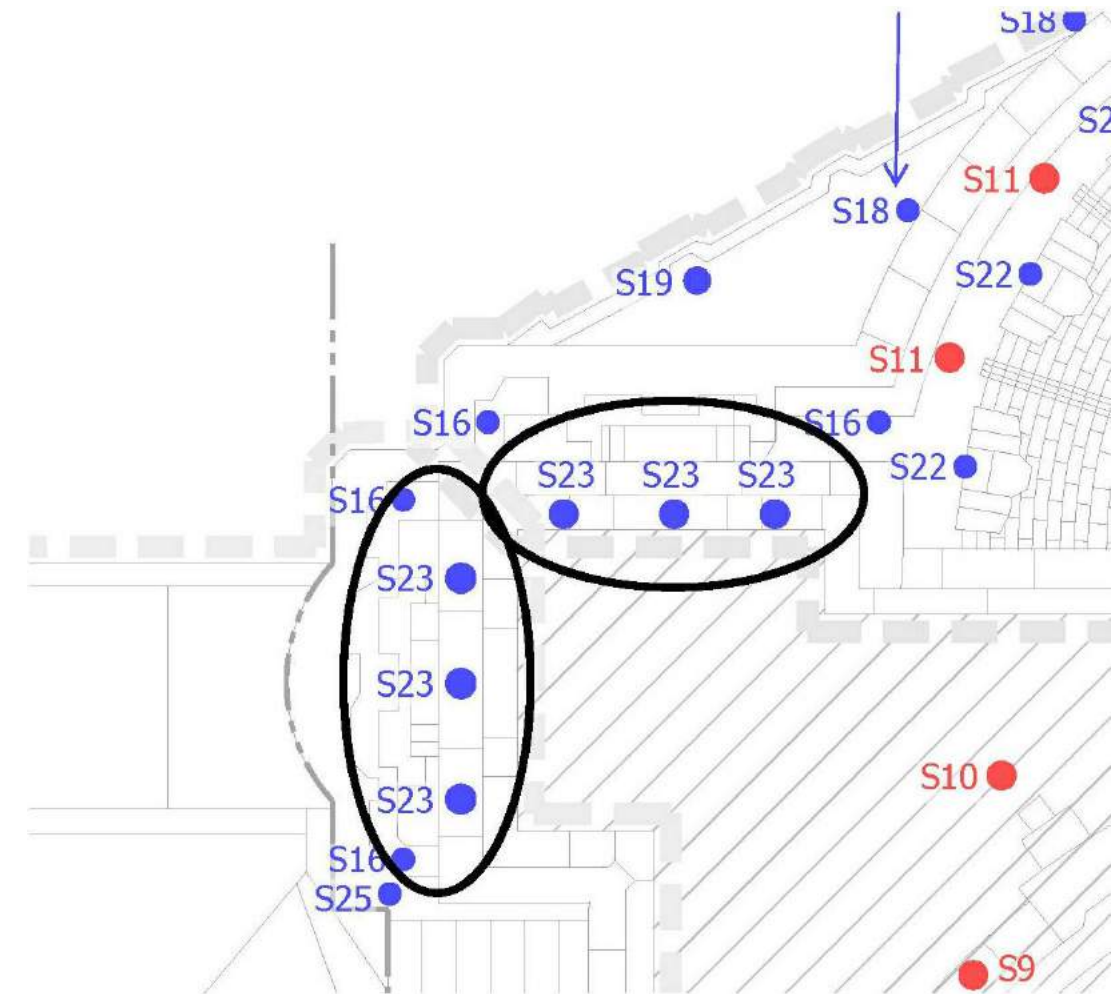
THANK
YOU



EXTRA DETAILS

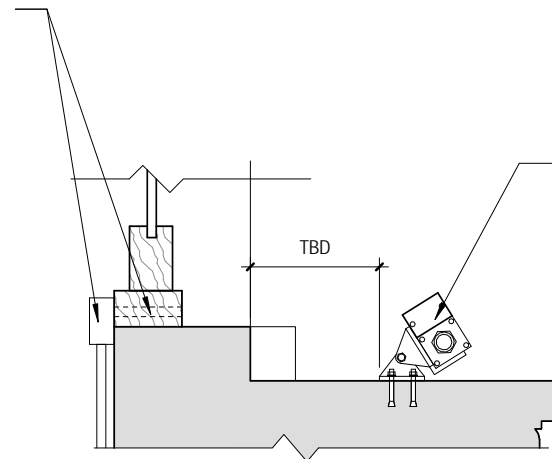


S14 - Exterior LED Light Fixture Mounting Detail
1 1/2" = 1'-0"



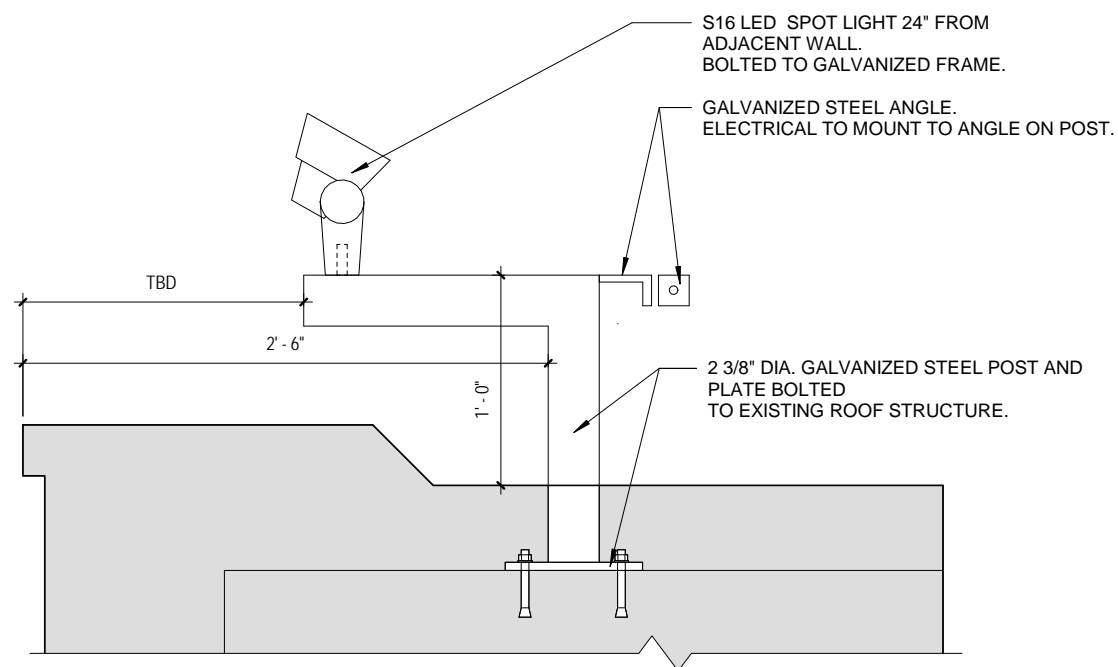
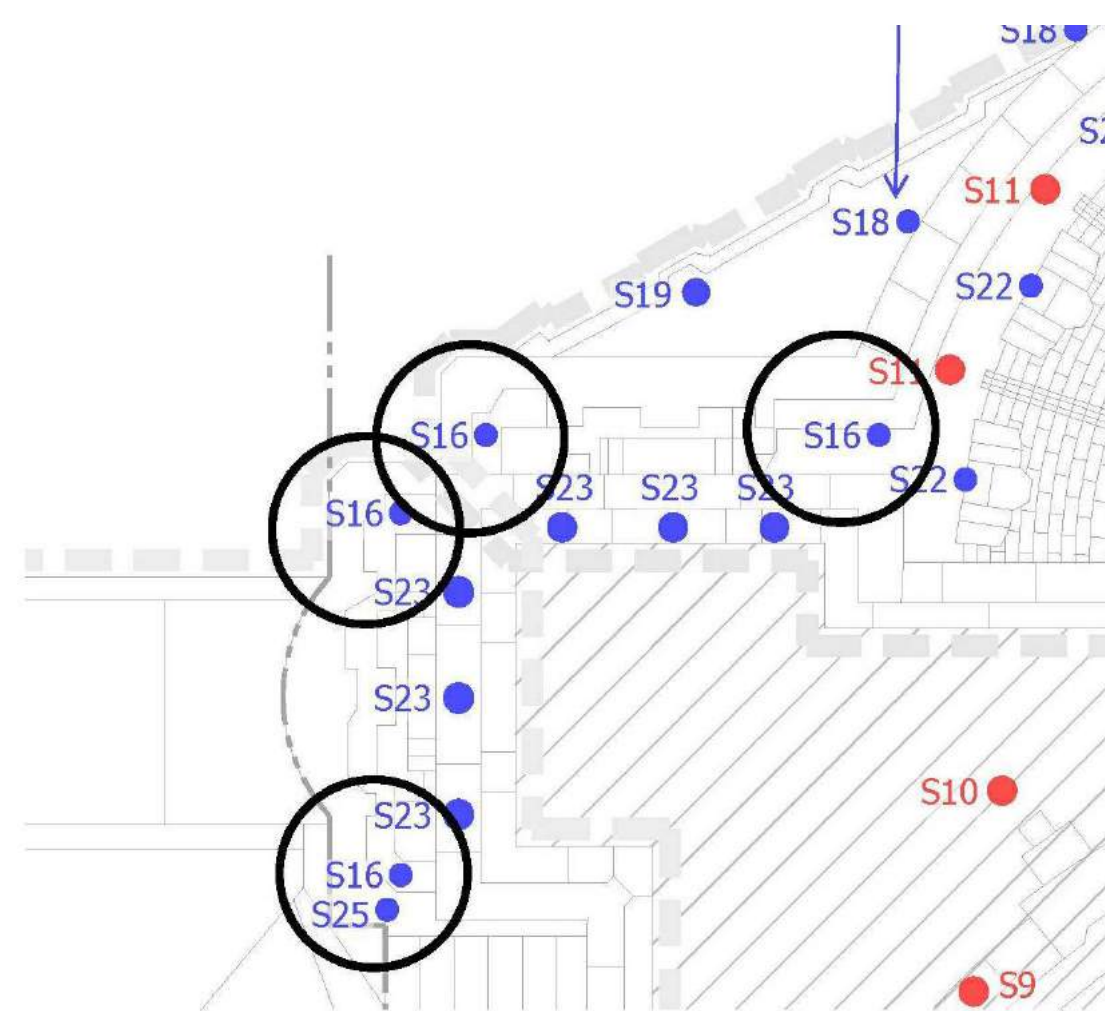
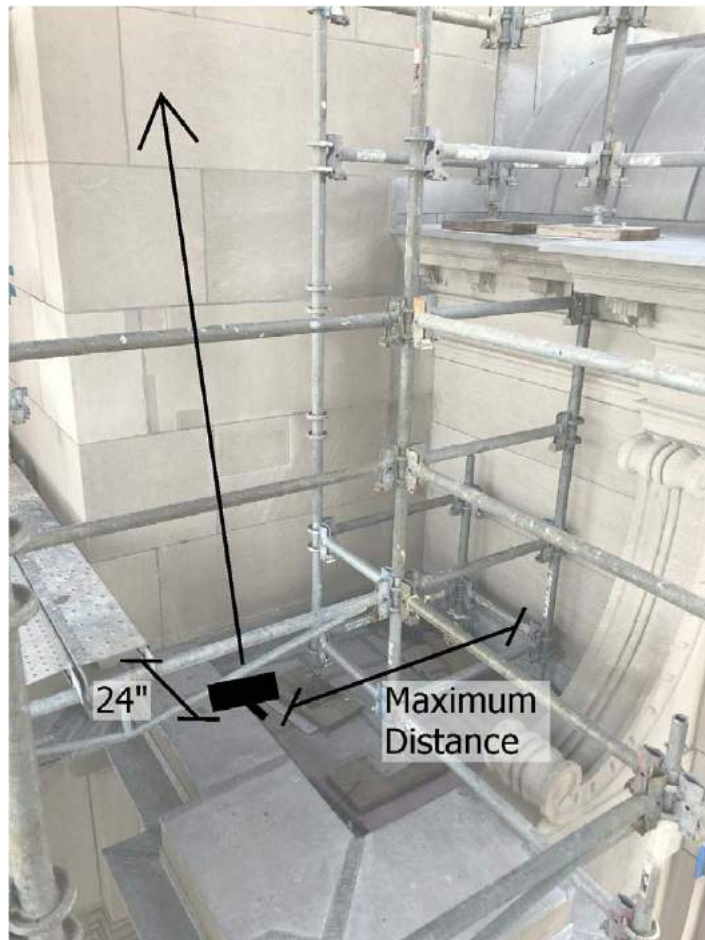
TYPICAL FOR EACH CORNER TOWER

CONDUIT AND "J" BOX TO BE EXPOSED AT BUILDING INTERIOR. DRILL HOLE IN EXISTING WINDOW FRAME TO ROUTE WIRING TO SURFACE MOUNTED FIXTURE. FILL WITH SEALANT.

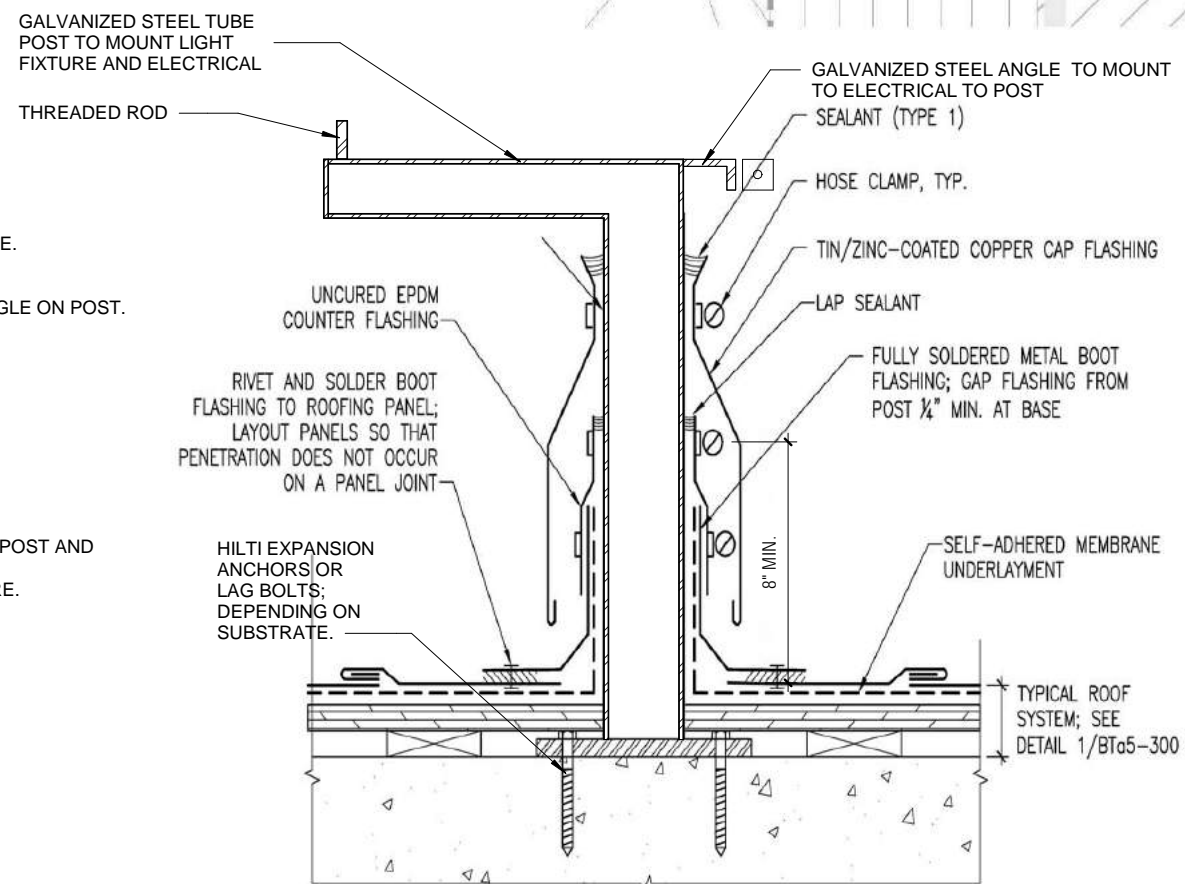


S23 LED LINEAR UPLIGHT CENTERED ON WINDOW WITH 1 "WAM2" 2 INCH ADJUSTABLE MOUNT PER FIXTURE FASTENED TO EXISTING STONE SILL WITH 2-4 HILTI EXPANSION ANCHORS.

S23 - Exterior LED Lighting Fixture Mounting Detail
1 1/2" = 1'-0"



S16 - Exterior LED Light Fixture Mounting Detail
 1 1/2" = 1'-0"

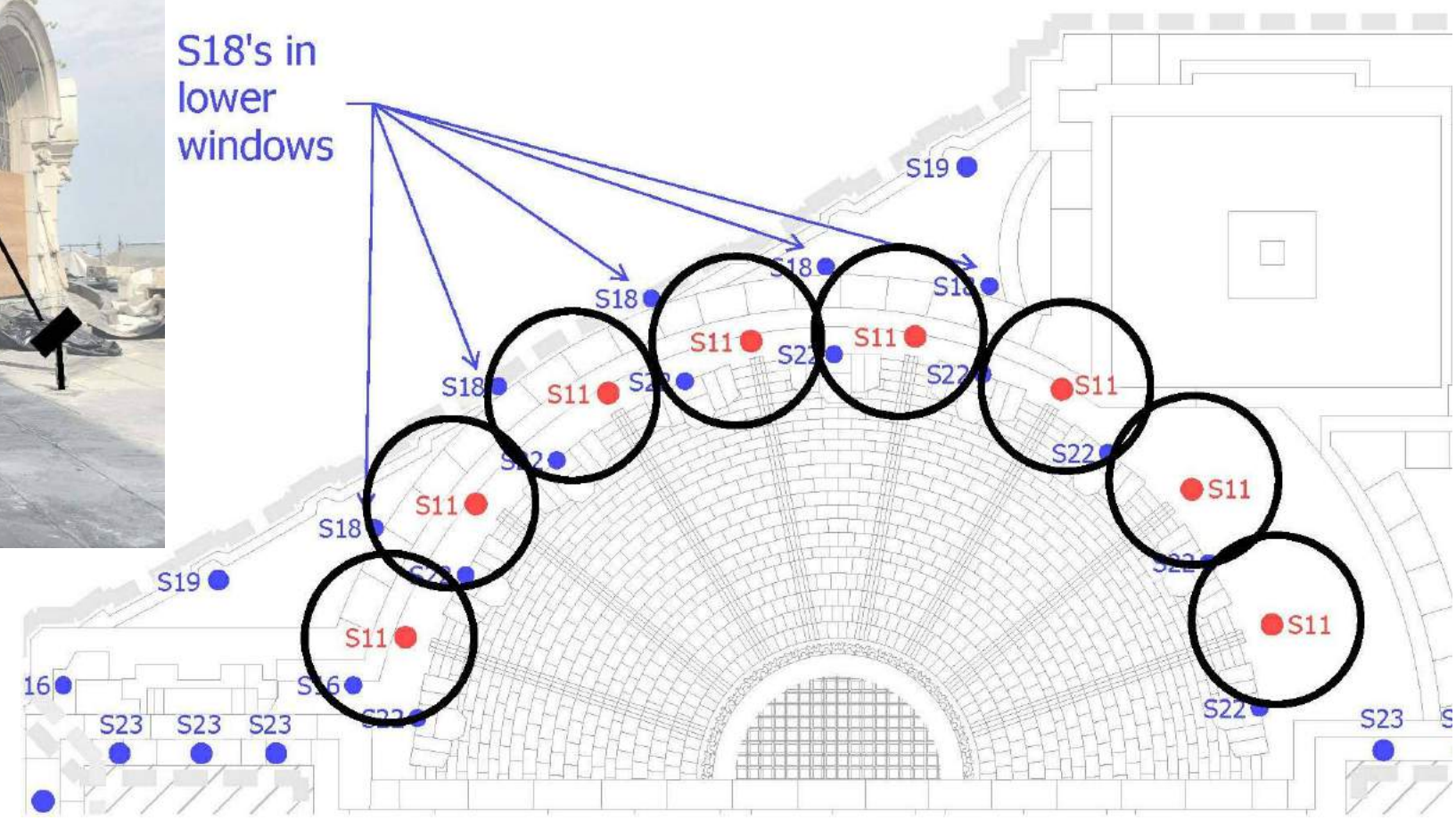


**TYPICAL FOR
 MIRRORED
 FACADE**

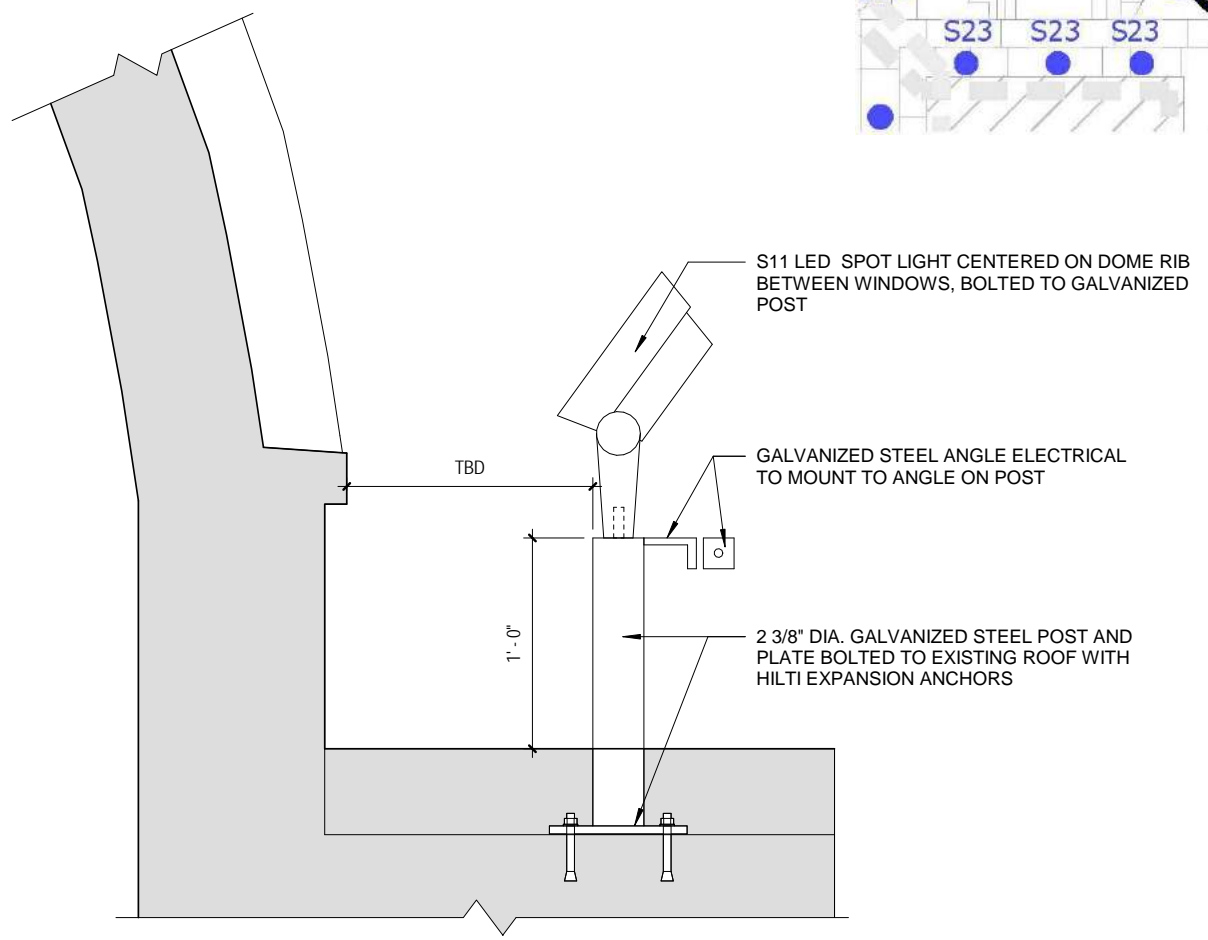
NOTES:
 1. SUPPORT POST SHOWN SCHEMATICALLY; FIELD VERIFY POST SIZE AND COMPONENTS NECESSARY TO MOUNT FIXTURE AS SHOWN. COORDINATE WITH FIXTURE TYPE. SUBMIT FINAL PROPOSED CONFIGURATION, INCLUDING ANCHORAGE TO EXISTING DECK.



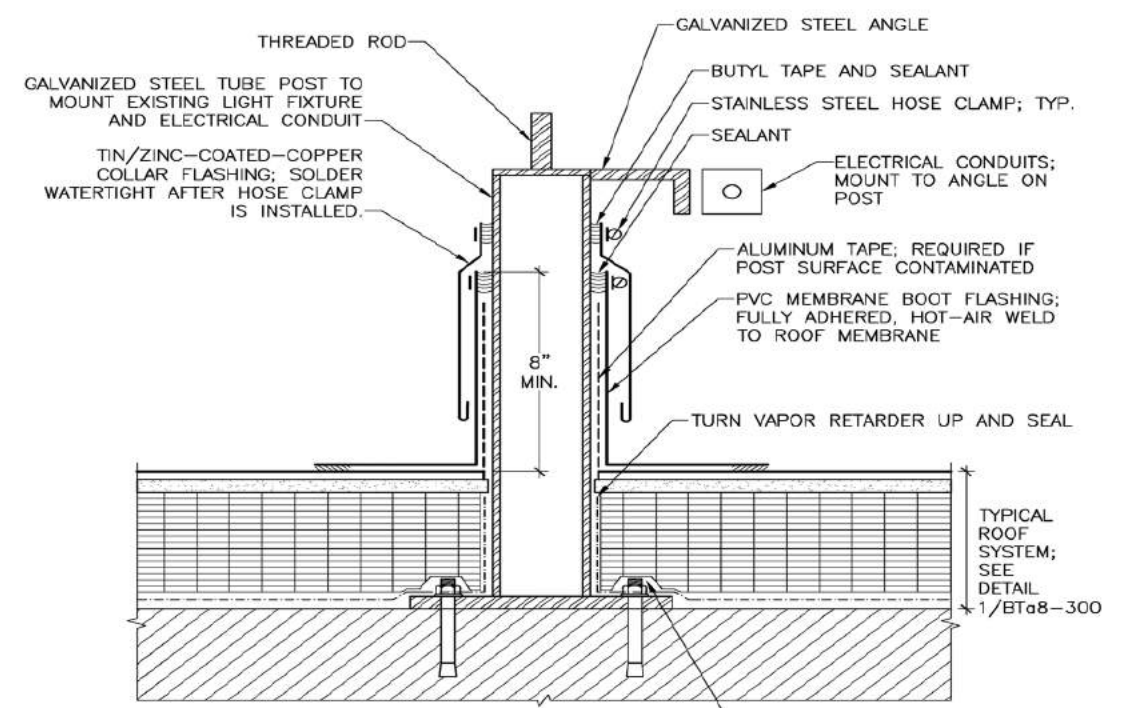
S18's in lower windows



TYPICAL FOR OTHER HALF DOME



S11 - Exterior LED Light Fixture Mounting Detail
1 1/2" = 1'-0"

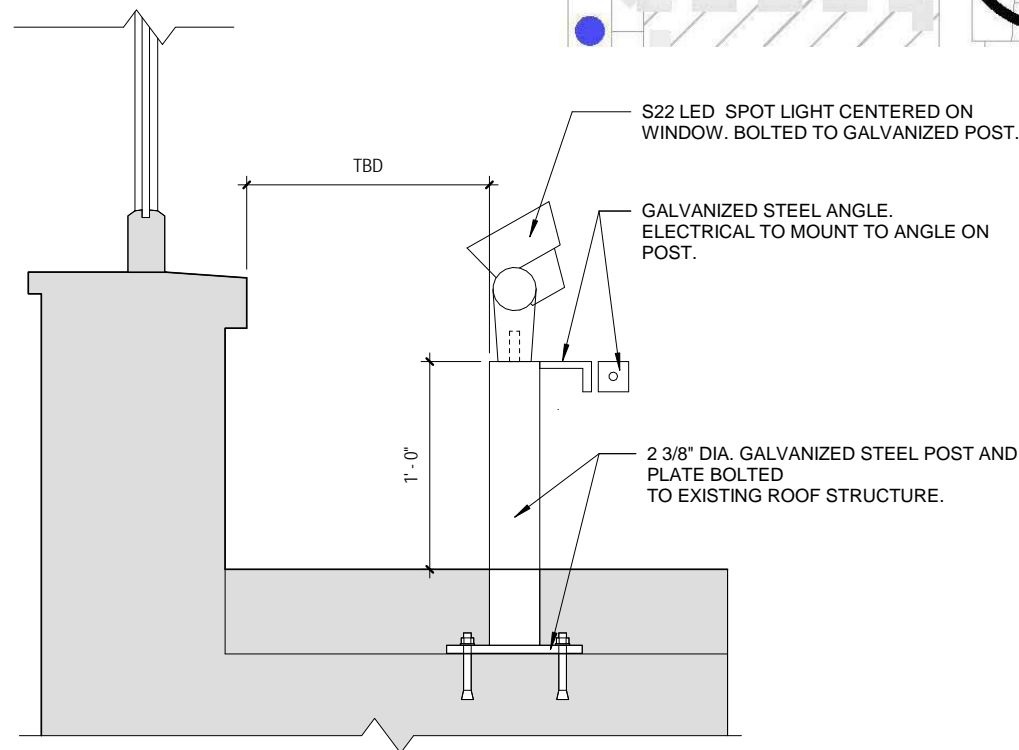
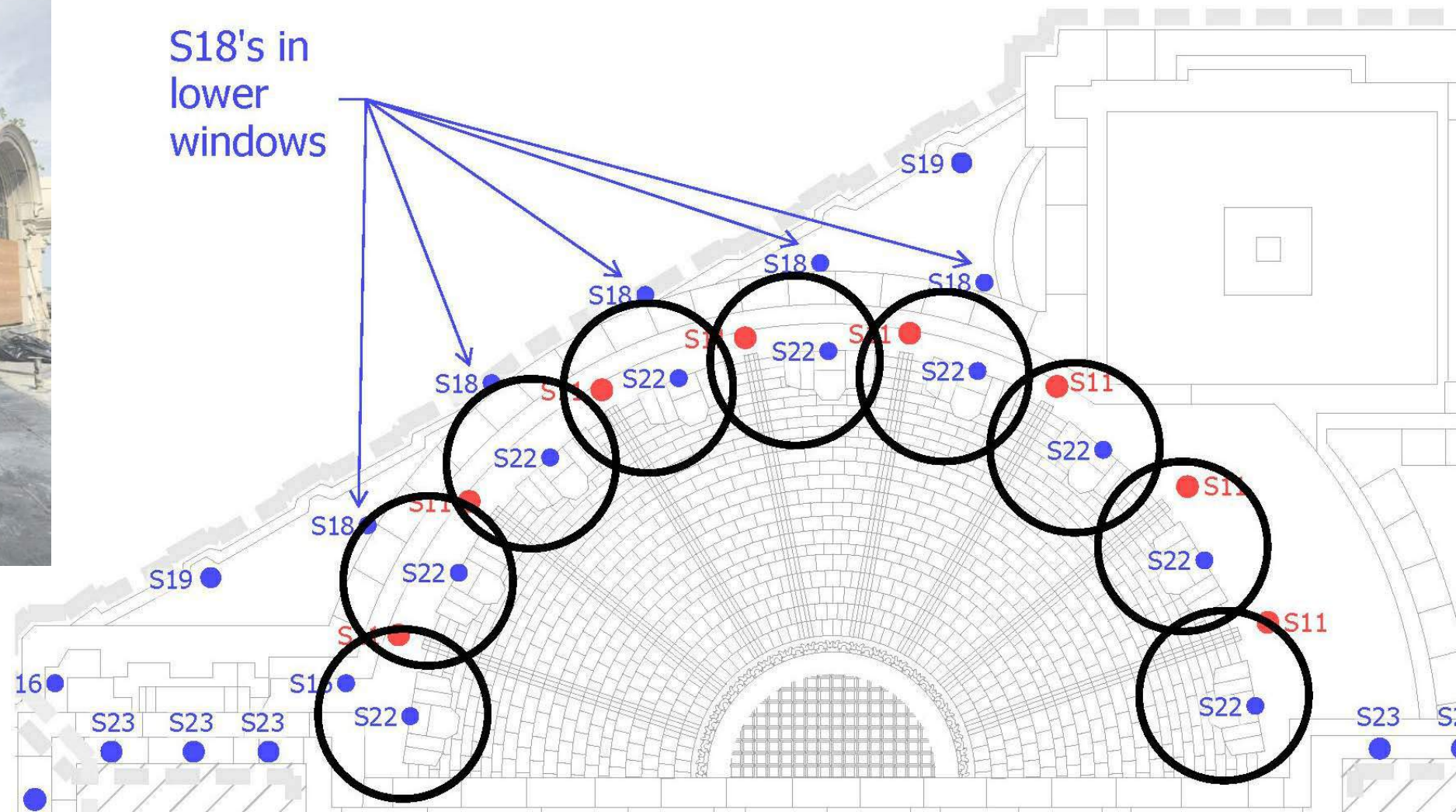


NOTES:
1. SUPPORT POST SHOWN SCHEMATICALLY; FIELD VERIFY POST SIZE AND COMPONENTS NECESSARY TO MOUNT FIXTURE AS SHOWN. SUBMIT FINAL PROPOSED CONFIGURATION, INCLUDING ANCHORAGE TO EXISTING DECK, PER SHOP DRAWING REQUIREMENTS IN SPECIFICATIONS

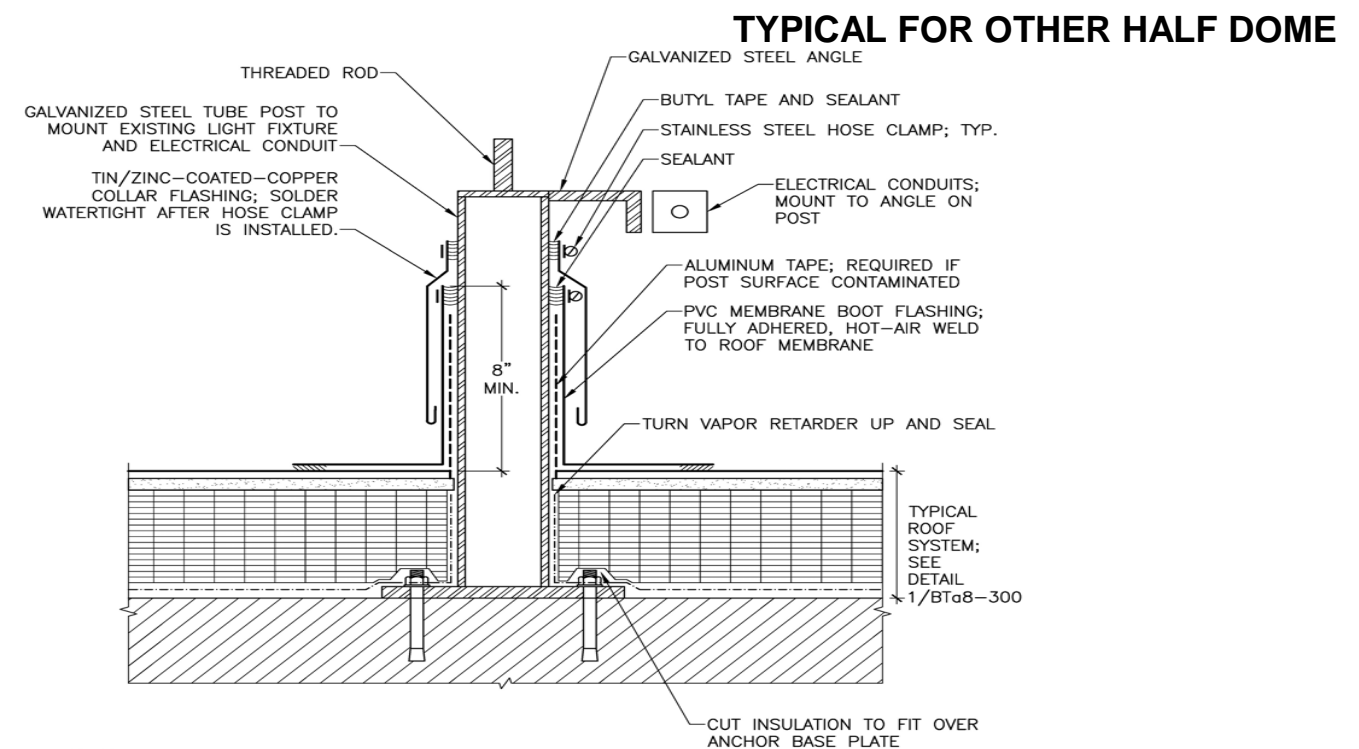
DETAILS



S18's in lower windows

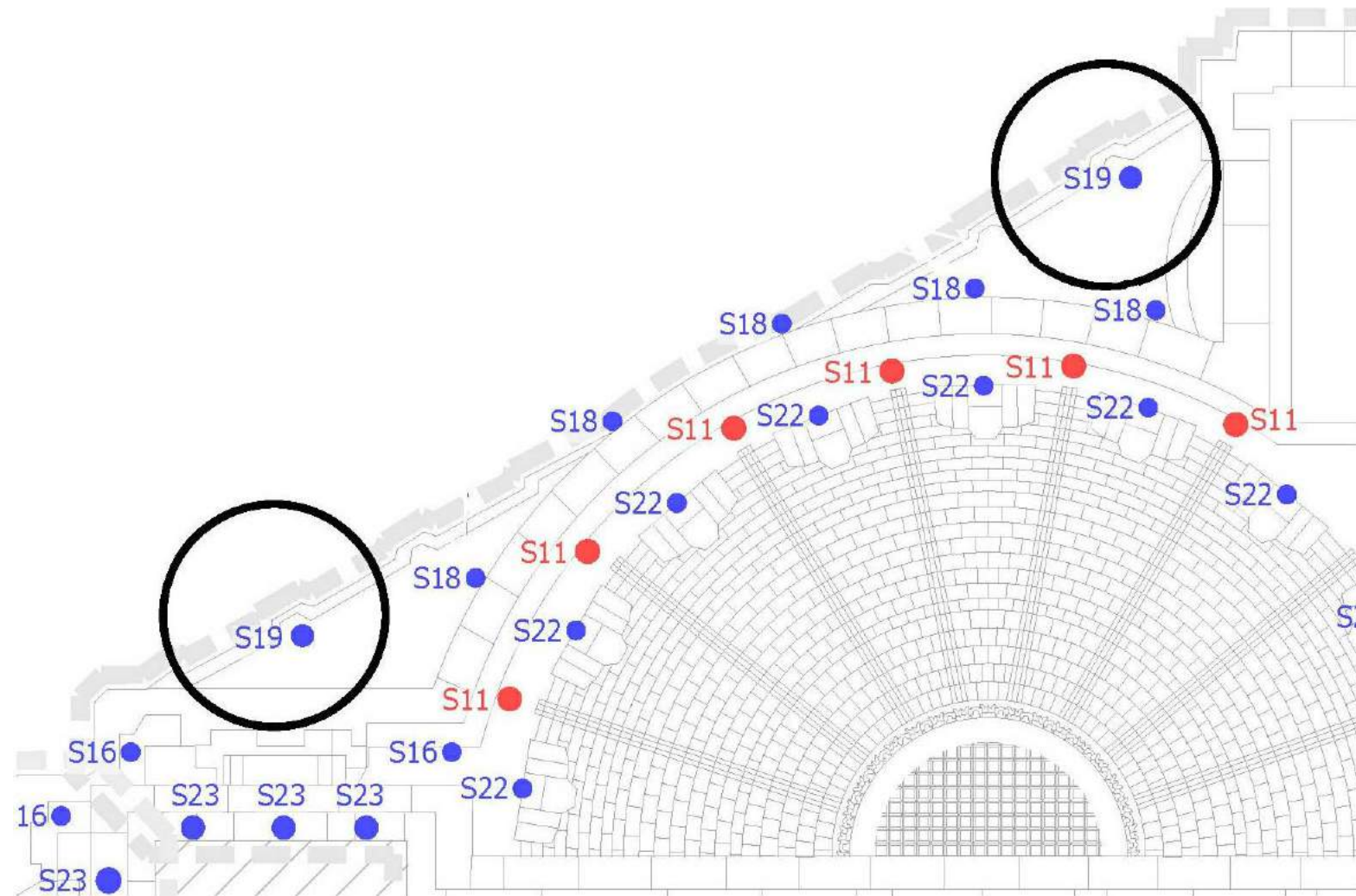


S22 - Exterior LED Lighting Fixture Mounting Detail
 1 1/2" = 1'-0"

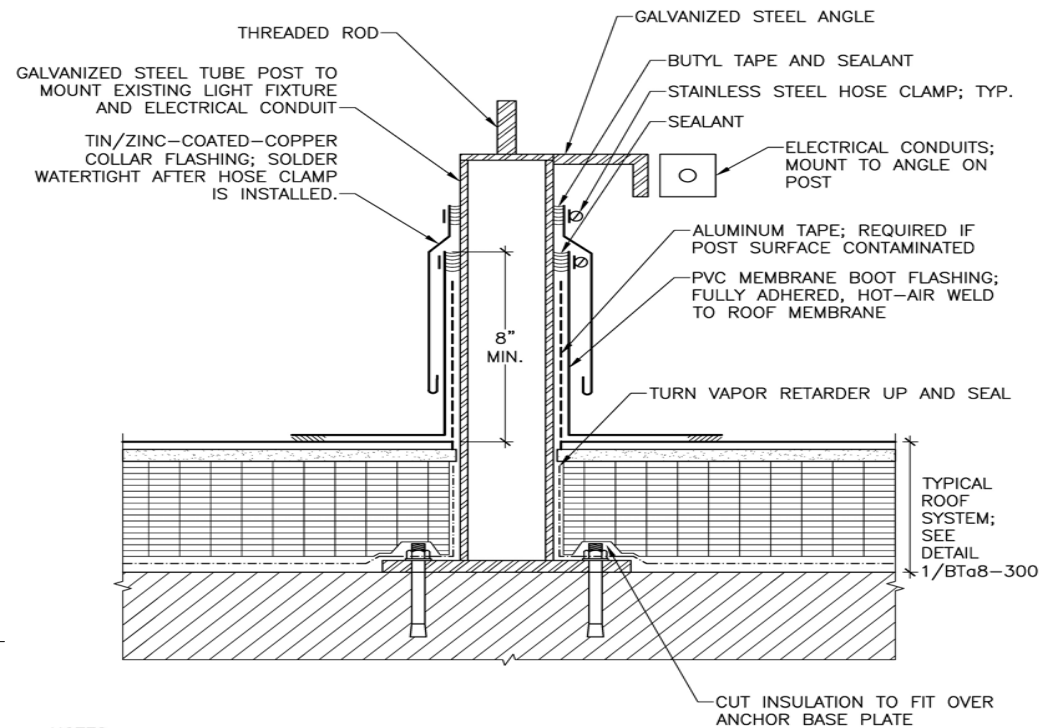
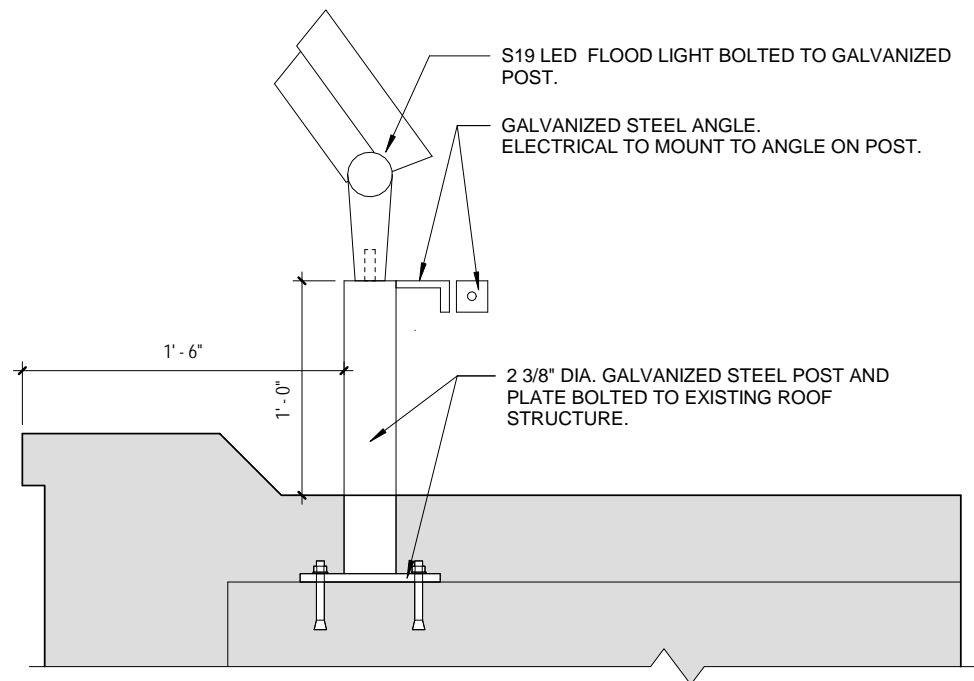


NOTES:
 1. SUPPORT POST SHOWN SCHEMATICALLY; FIELD VERIFY POST SIZE AND COMPONENTS NECESSARY TO MOUNT FIXTURE AS SHOWN. SUBMIT FINAL PROPOSED CONFIGURATION, INCLUDING ANCHORAGE TO EXISTING DECK, PER SHOP DRAWING REQUIREMENTS IN SPECIFICATIONS

DETAILS



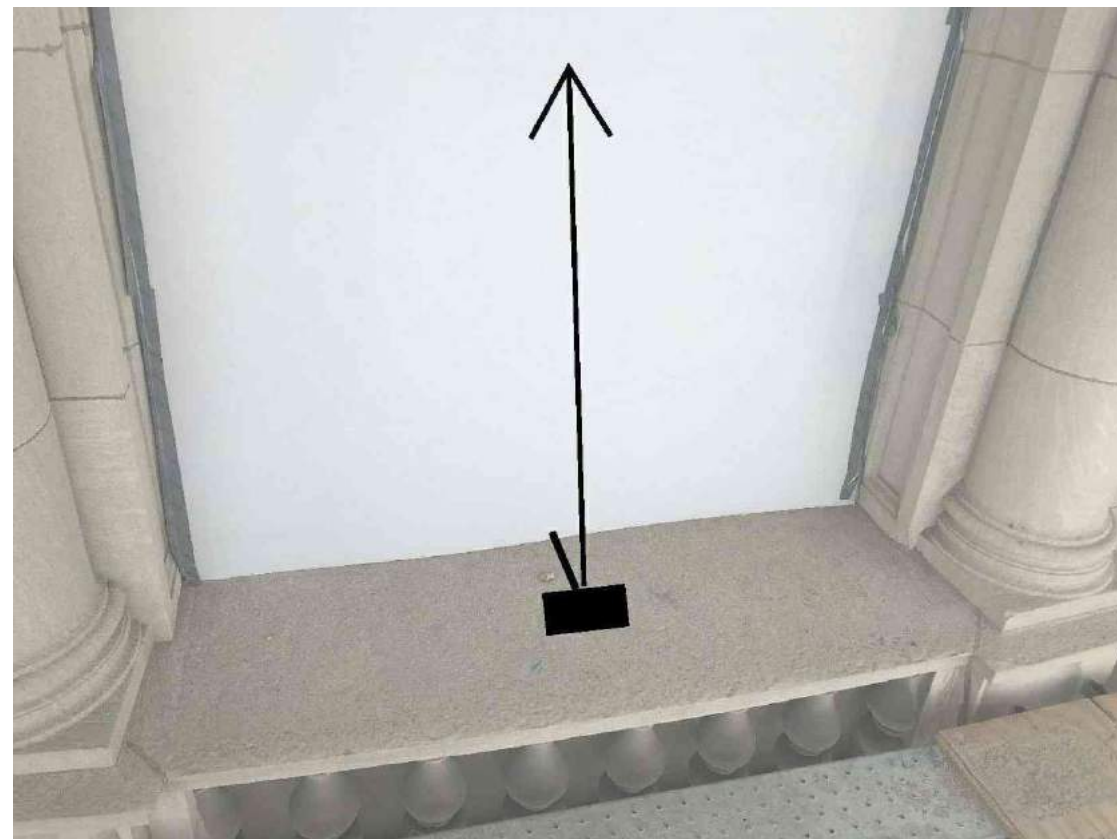
TYPICAL FOR OTHER HALF DOME



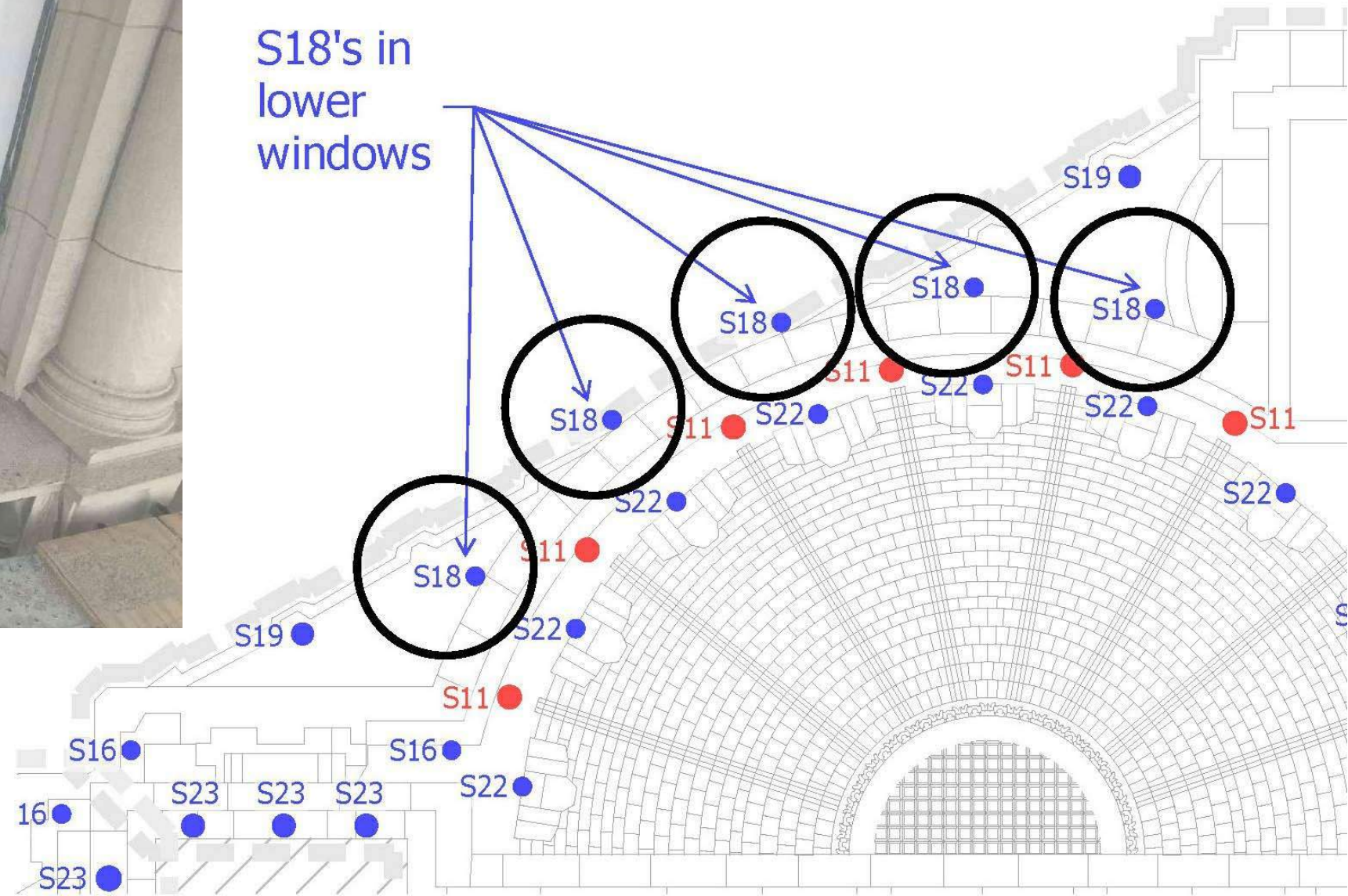
NOTES:
 1. SUPPORT POST SHOWN SCHEMATICALLY; FIELD VERIFY POST SIZE AND COMPONENTS NECESSARY TO MOUNT FIXTURE AS SHOWN. SUBMIT FINAL PROPOSED CONFIGURATION, INCLUDING ANCHORAGE TO EXISTING DECK, PER SHOP DRAWING REQUIREMENTS IN SPECIFICATIONS

S19 - Exterior LED Lighting Fixture Mounting Detail

1 1/2" = 1'-0"

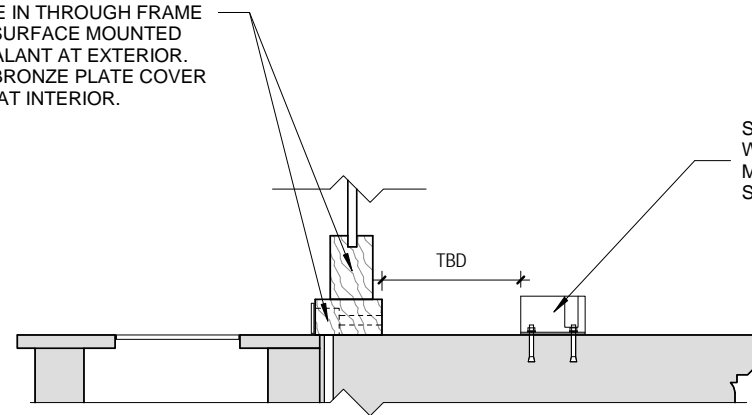


S18's in lower windows



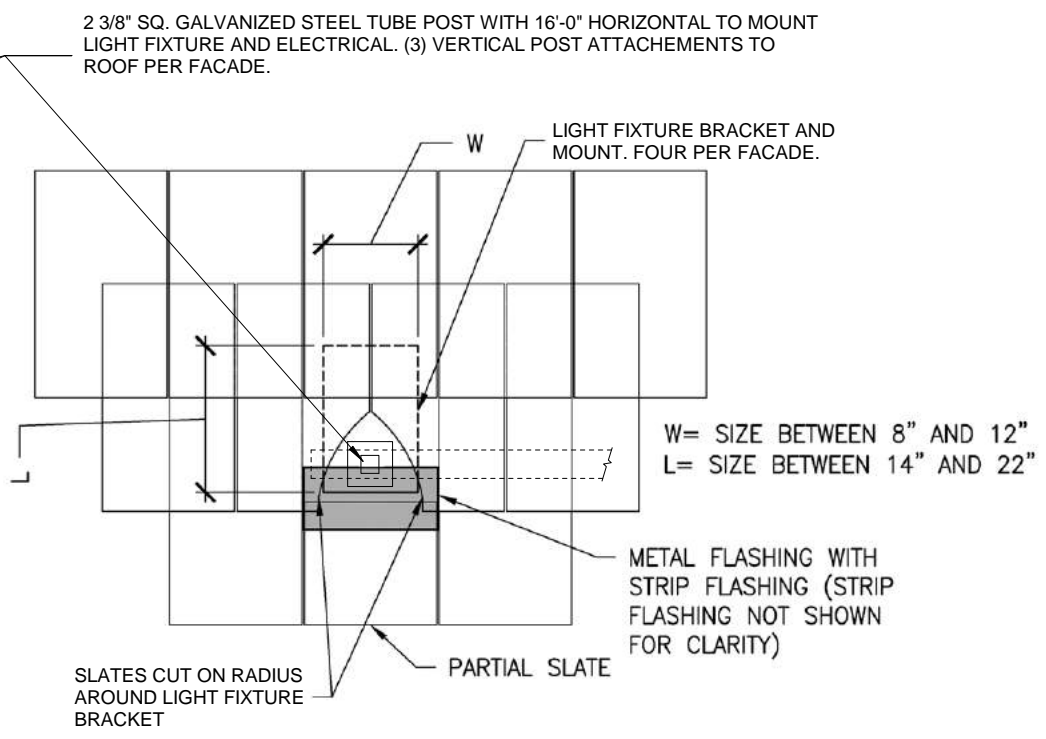
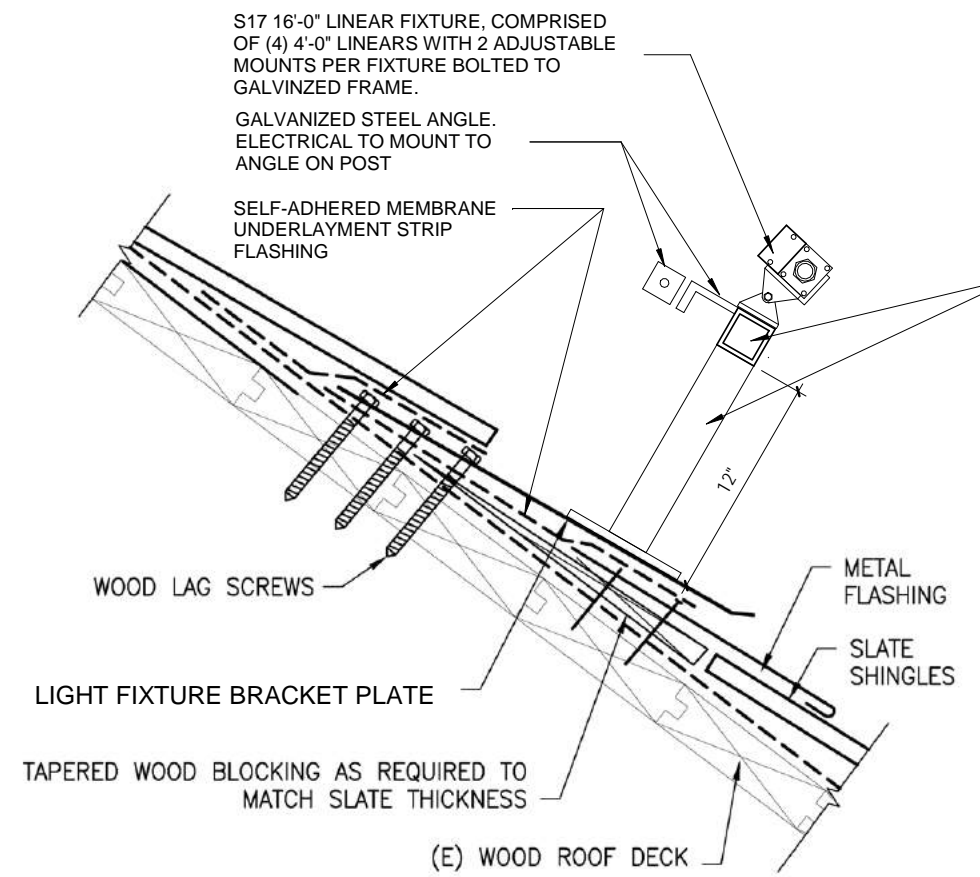
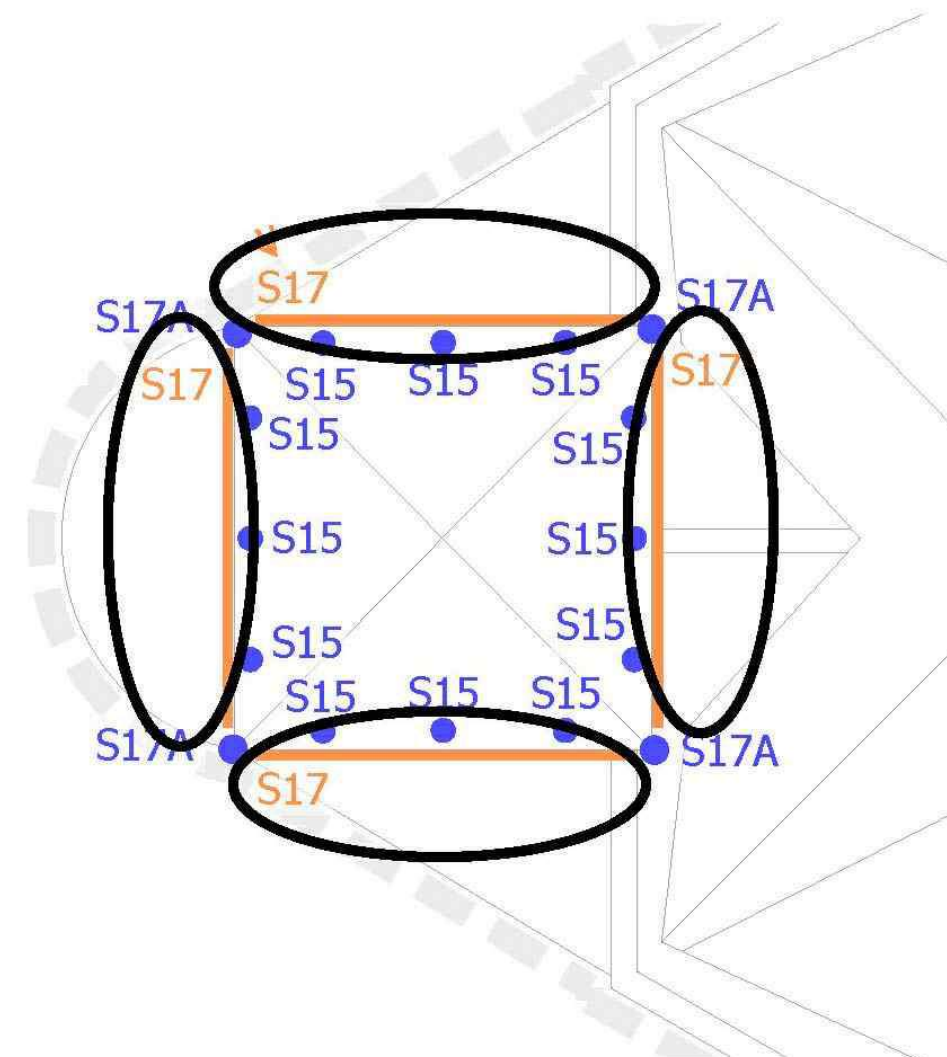
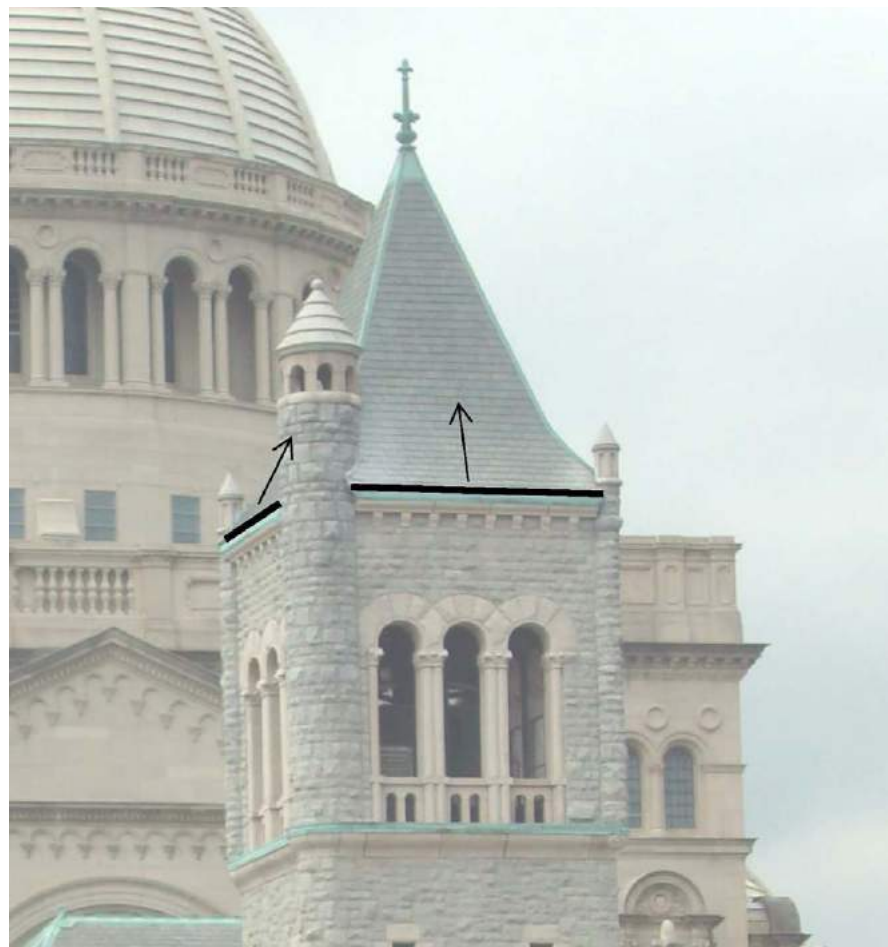
TYPICAL FOR OTHER HALF DOME

CONDUIT, "J" BOX AND DRIVER TO BE LOCATION IN CRAWL SPACE ADJACENT TO RADIATOR ENCLOSURE. CUT OUT PORTION OF EXISTING WINDOW FRAME AND DRILL HOLE IN THROUGH FRAME TO ROUTE WIRING TO SURFACE MOUNTED FIXTURE. FILL WITH SEALANT AT EXTERIOR. PROVIDE OIL-RUBBED BRONZE PLATE COVER TOP CONCEAL WIRING AT INTERIOR.



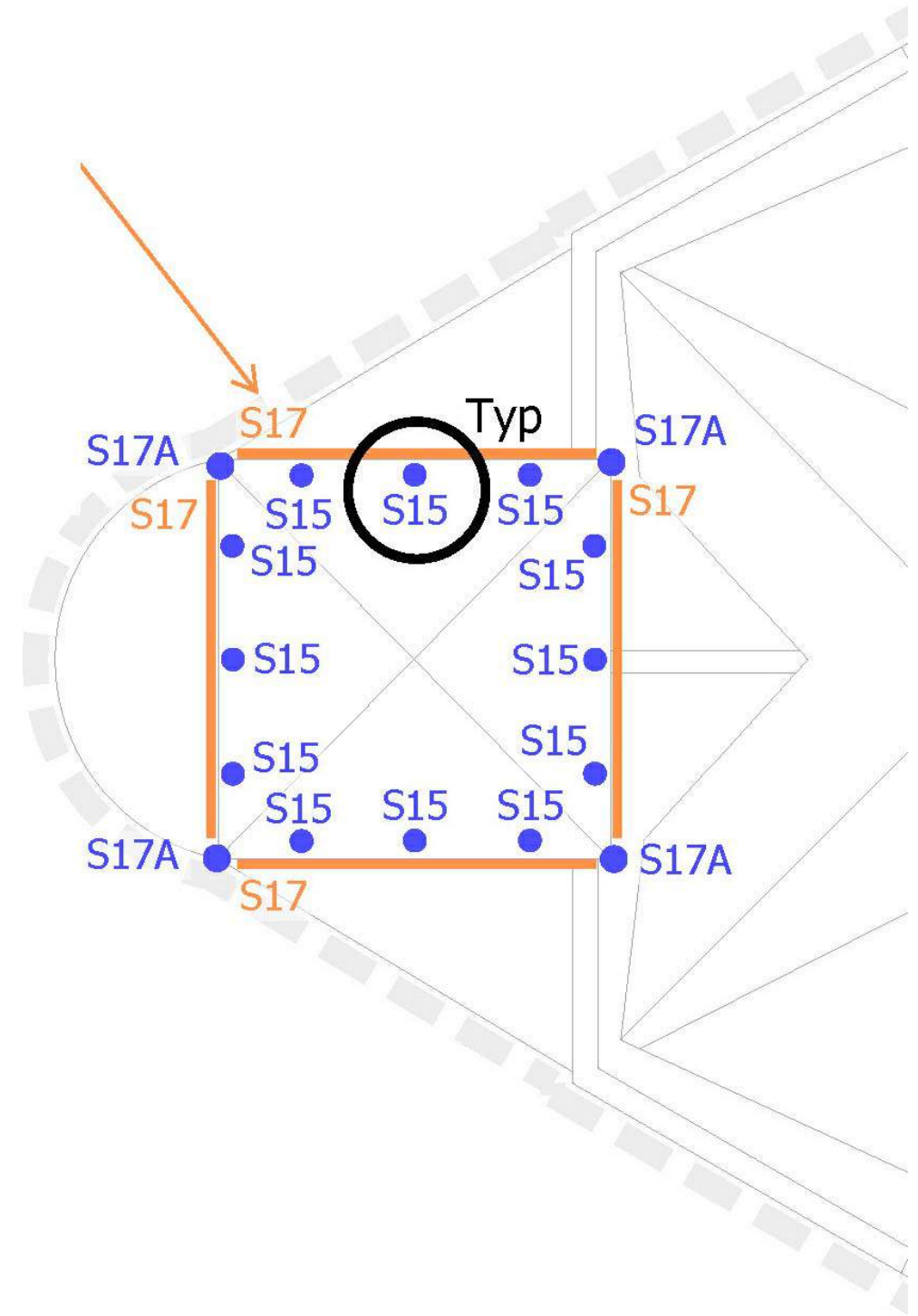
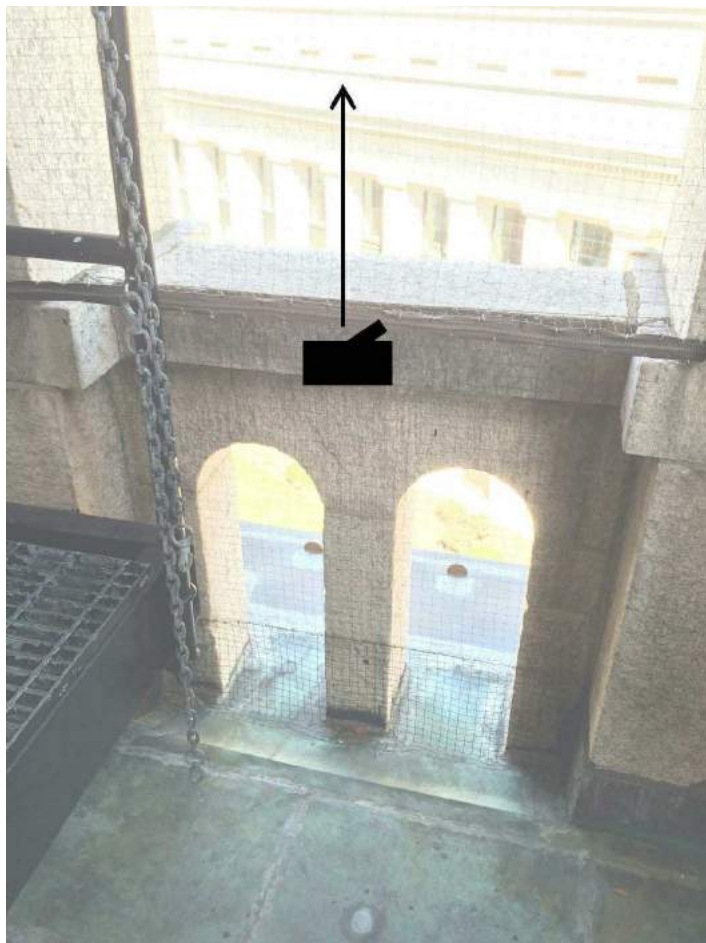
S18 LED LINEAR UPLIGHT CENTERED ON WINDOW WITH 1 "WAM2" 2 INCH ADJUSTABLE MOUNT PER FIXTURE FASTENED TO EXISTING STONE SILL WITH 2-4 HILTI EXPANSION ANCHORS.

S18 - Exterior LED Lighting Fixture Mounting Detail
1 1/2" = 1'-0"



S17 - Exterior LED Light Fixture Mounting Detail
 1 1/2" = 1'-0"

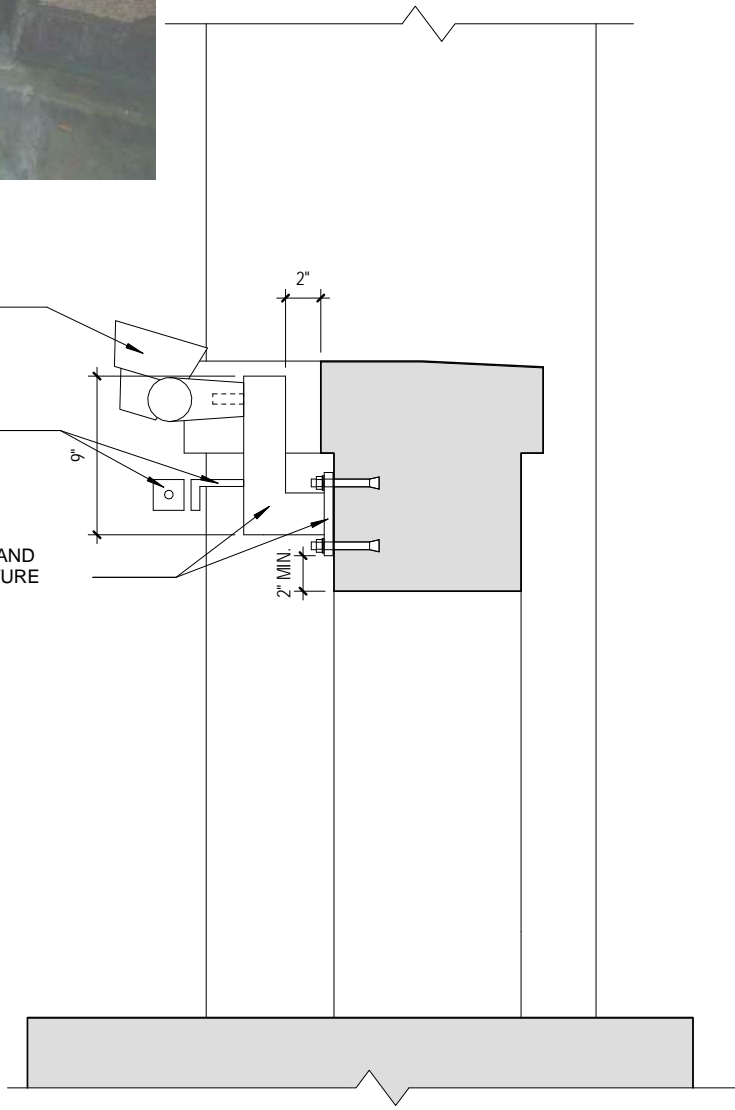
DETAILS



S16 LED SPOT LIGHT BOLTED TO GALVANIZED POST FRAME ON BACK OF EXISTING STONE BALUSTRADE.

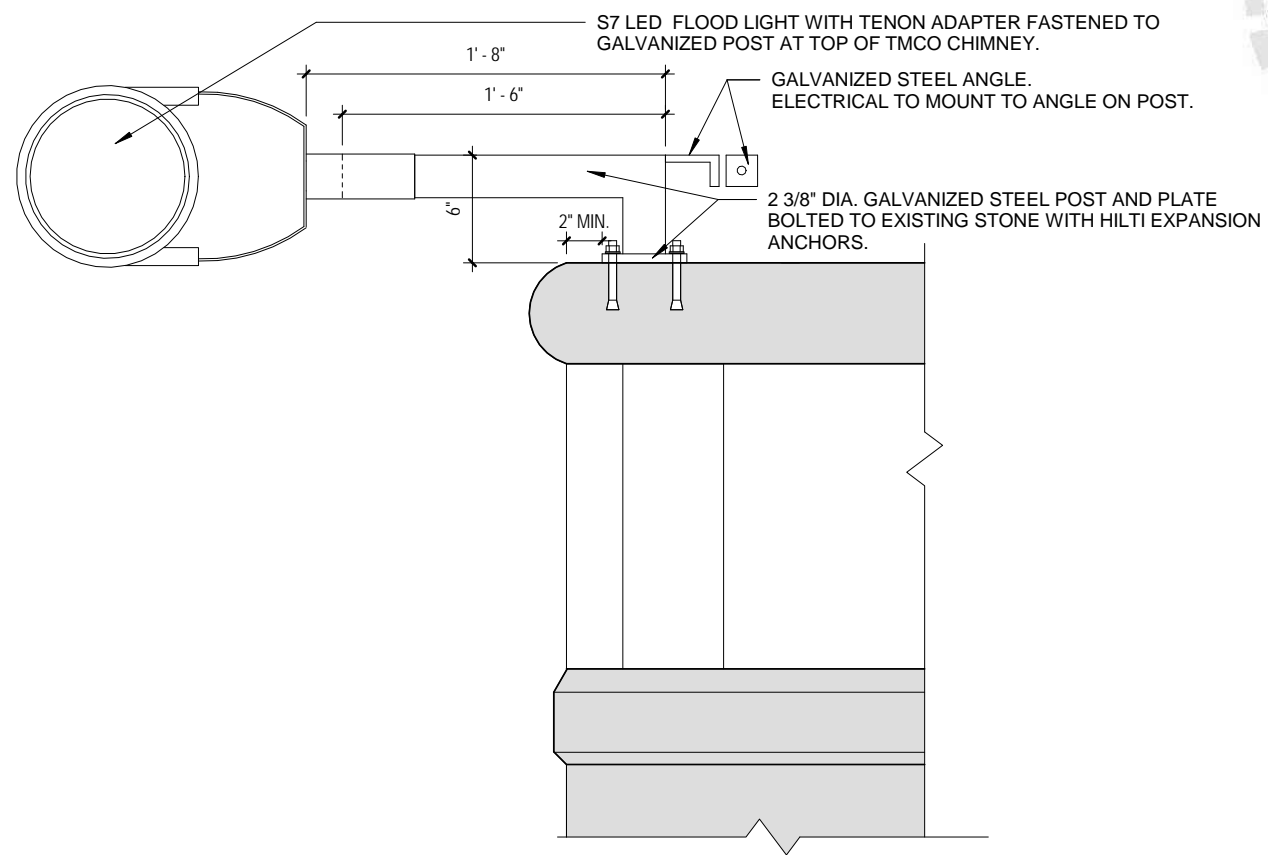
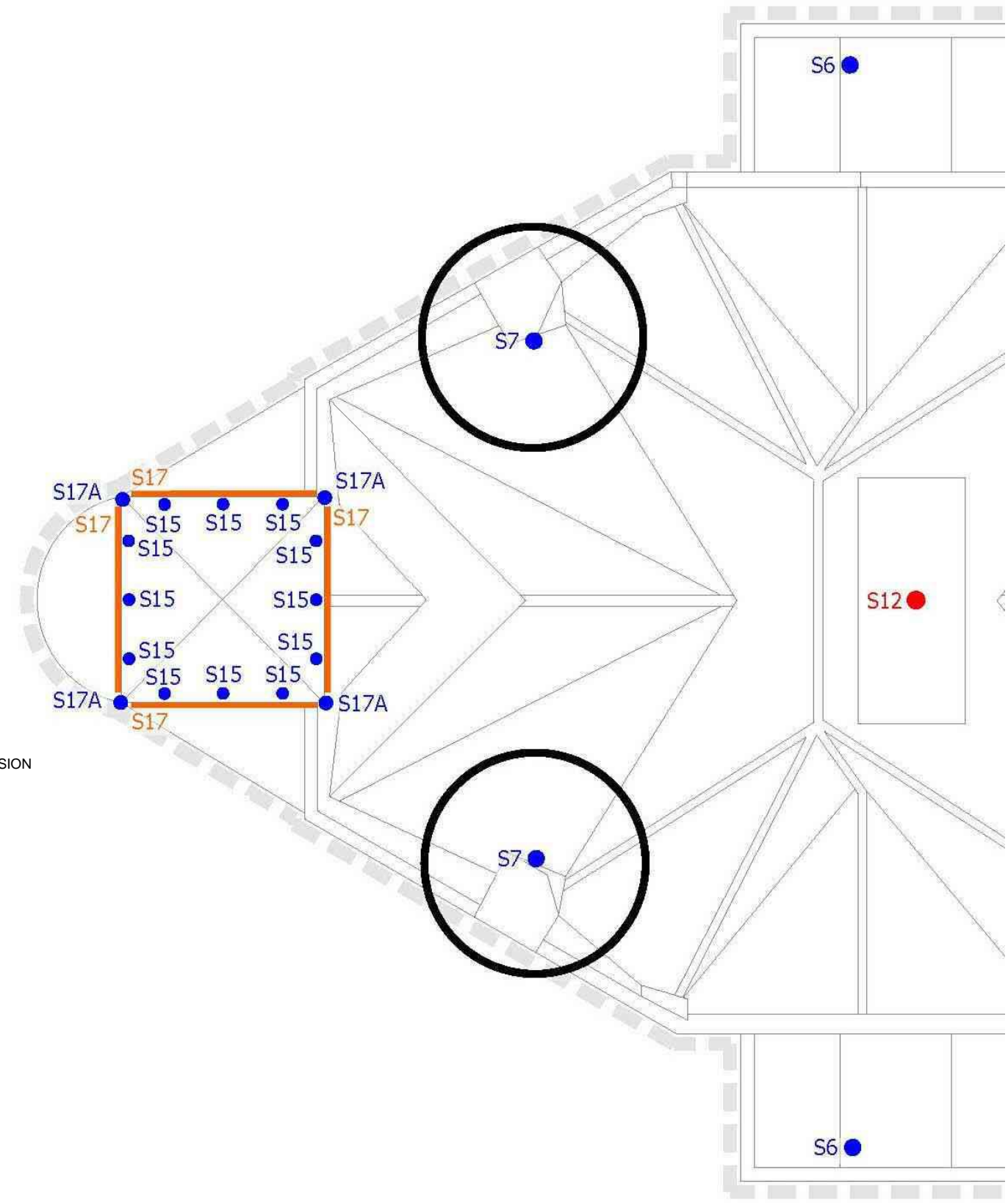
GALVANIZED STEEL ANGLE. ELECTRICAL TO MOUNT TO ANGLE ON POST.

2 3/8" DIA. GALVANIZED STEEL POST AND PLATE BOLTED TO EXISTING STRUCTURE WITH HILTI EXPANSION ANCHORS.



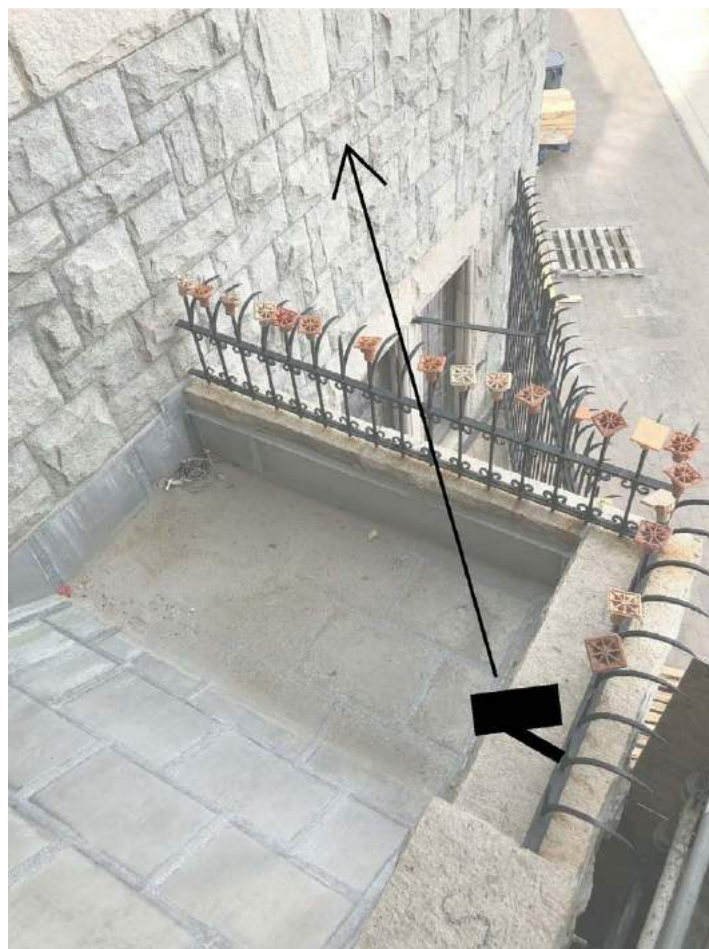
S15 - Exterior LED Light Fixture Mounting Detail
 1 1/2" = 1'-0"

DETAILS



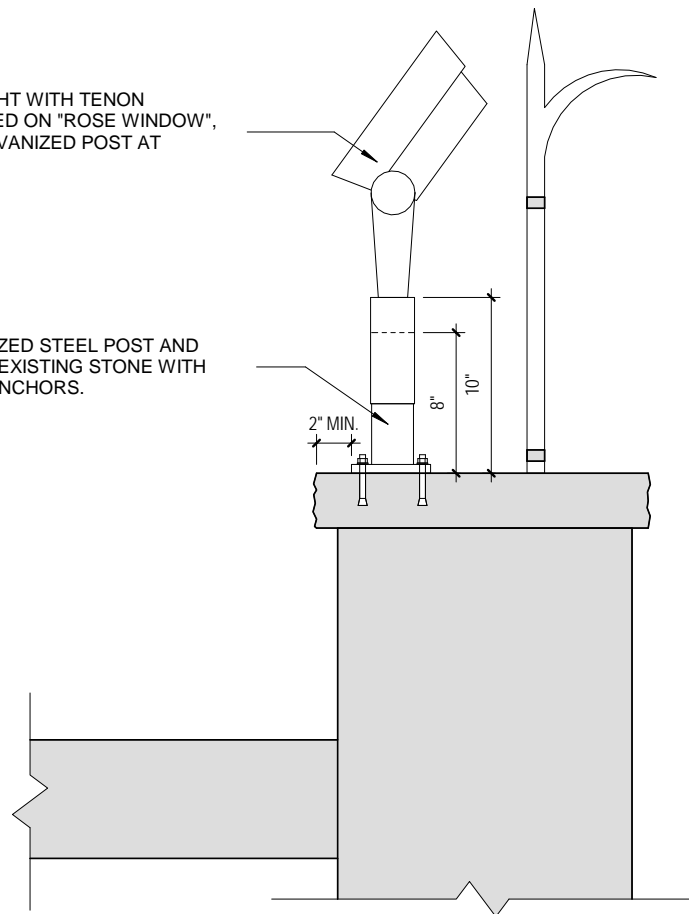
S7 - Exterior LED Light Fixture Mounting Detail
 1 1/2" = 1'-0"

DETAILS

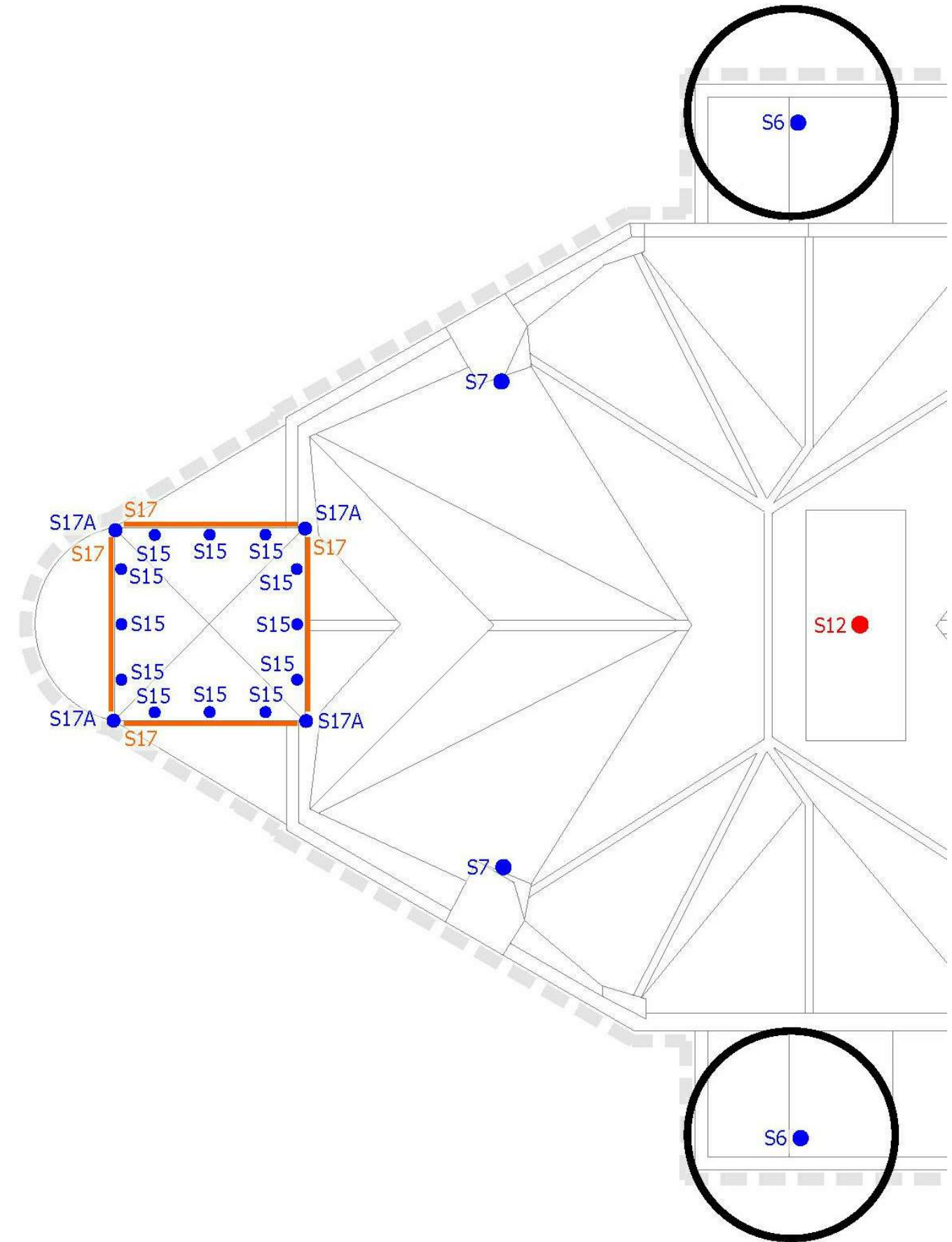


S6 LED FLOOD LIGHT WITH TENON ADAPTER CENTERED ON "ROSE WINDOW", FASTENED TO GALVANIZED POST AT PARAPET.

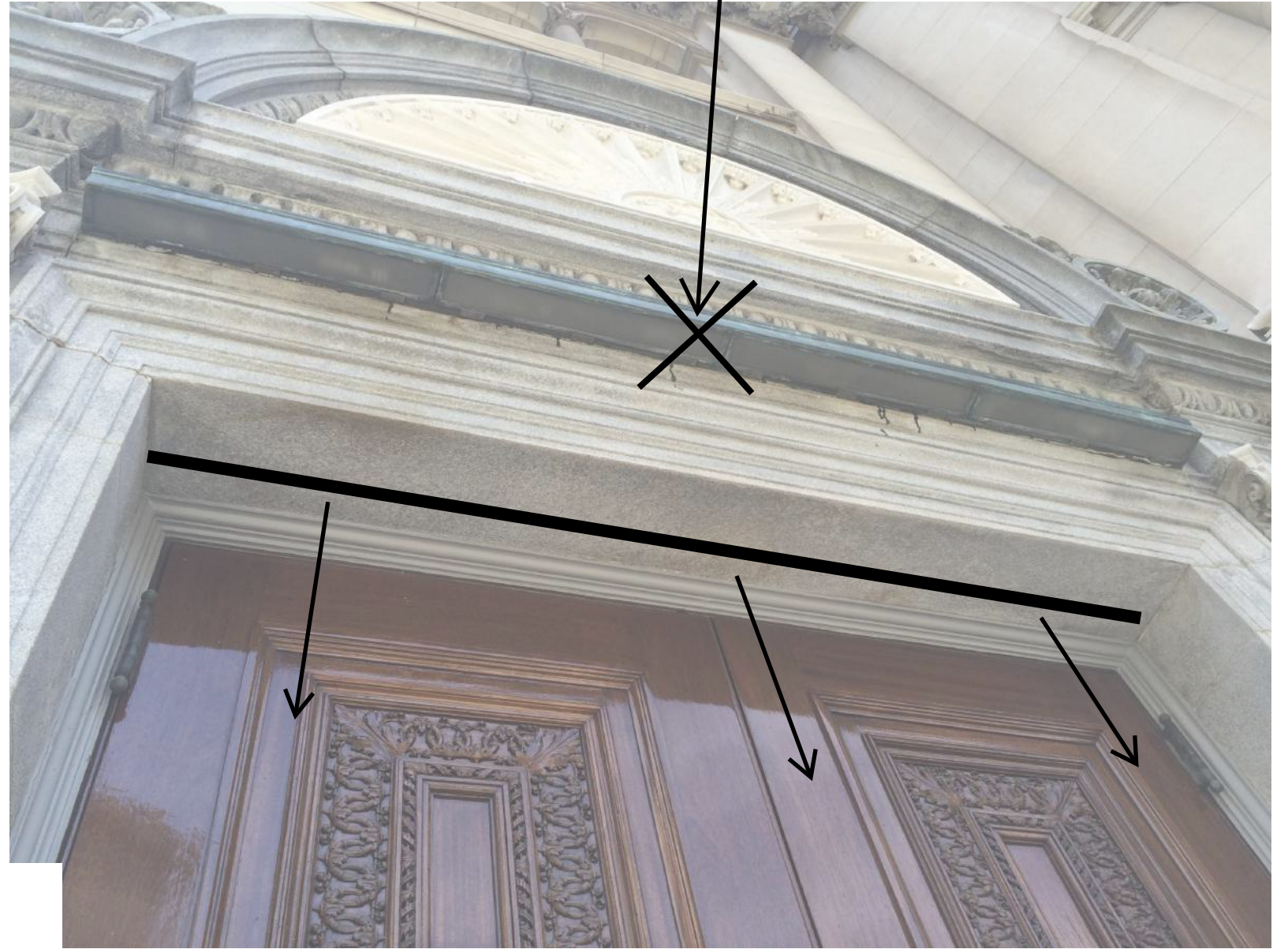
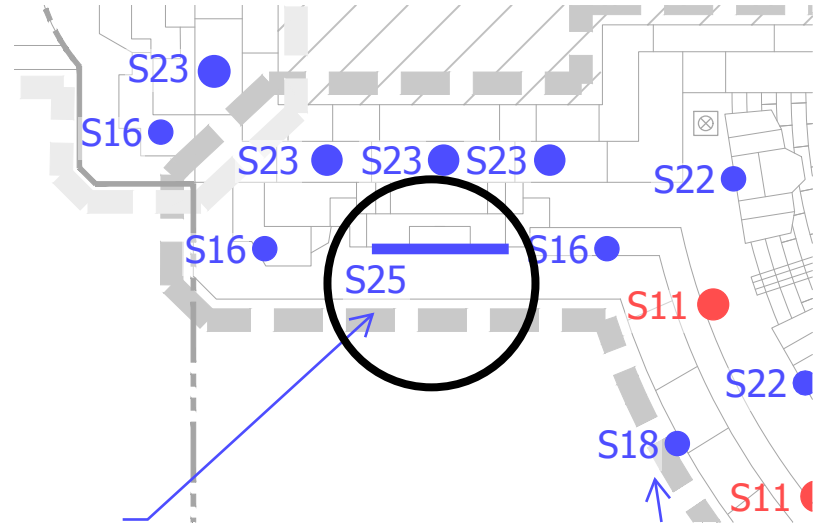
2 3/8" DIA. GALVANIZED STEEL POST AND PLATE BOLTED TO EXISTING STONE WITH HILTI EXPANSION ANCHORS.



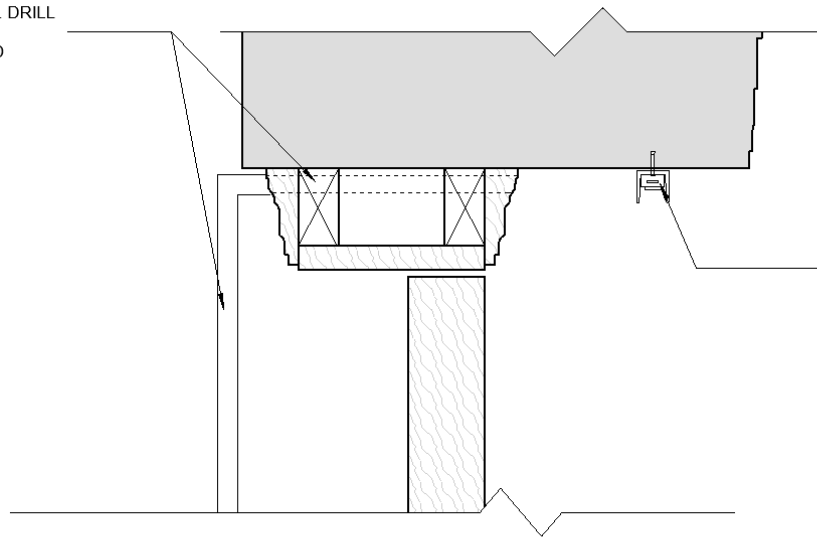
S6 - Exterior LED Light Fixture Mounting Detail
1 1/2" = 1'-0"



Remove existing fixture
and clean stone



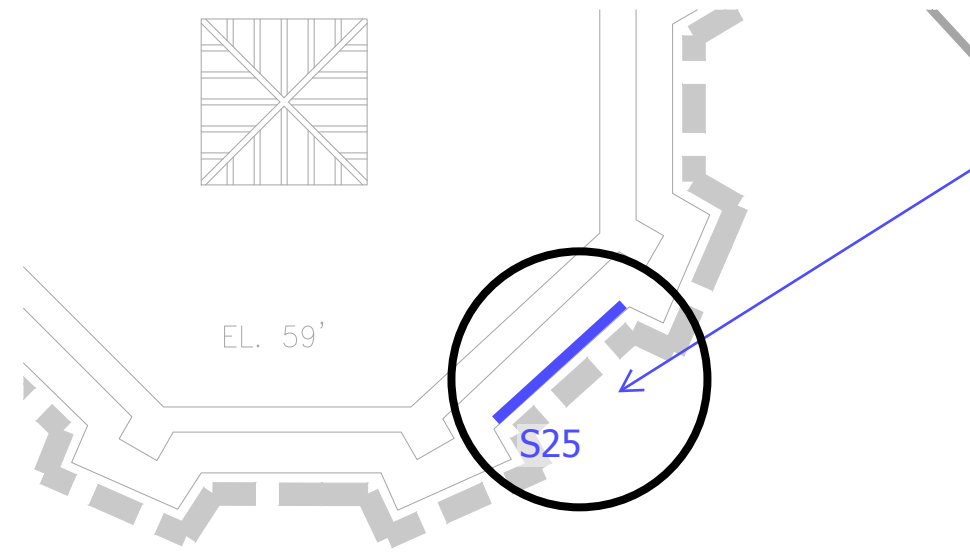
EXPOSED WIREMOLD WITH VESTIBULE TO BE ROUTED FROM FLOOR TO DOOR HEAD. DRILL HOLE IN EXISTING WINDOW FRAME TO ROUTE WIRING TO SURFACE MOUNTED FIXTURE. FILL WITH SEALANT.



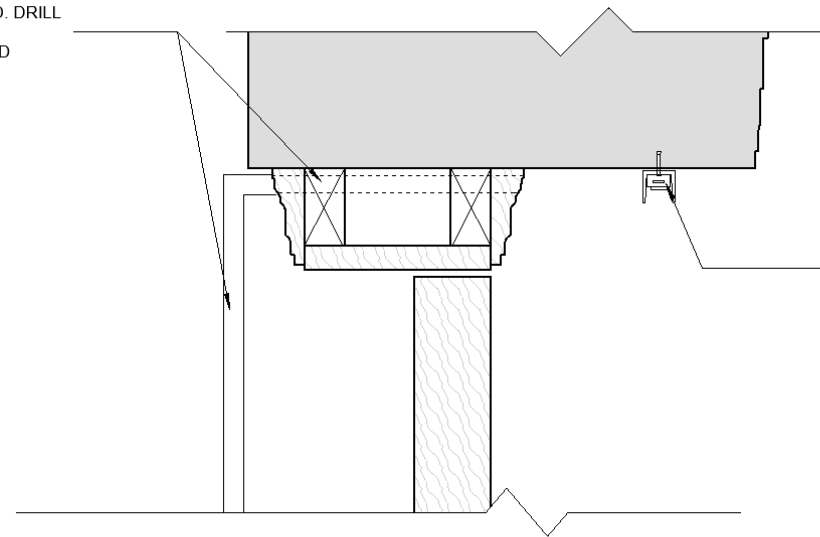
S25 LED LINEAR TAPE LIGHT SET IN 1" X 1" CHANNEL MOUNTED TO STONE HEADER WITH FLUSH MOUNT MASONRY ANCHORS.

S25 - Exterior LED Egress Lighting Fixture Mounting Detail - Typical
3" = 1'-0"

DETAILS

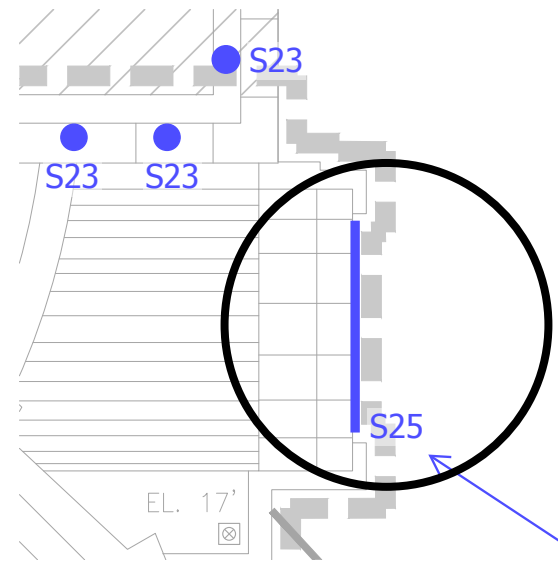


EXPOSED WIREMOLD WITH VESTIBULE TO BE ROUTED FROM FLOOR TO DOOR HEAD. DRILL HOLE IN EXISTING WINDOW FRAME TO ROUTE WIRING TO SURFACE MOUNTED FIXTURE. FILL WITH SEALANT.

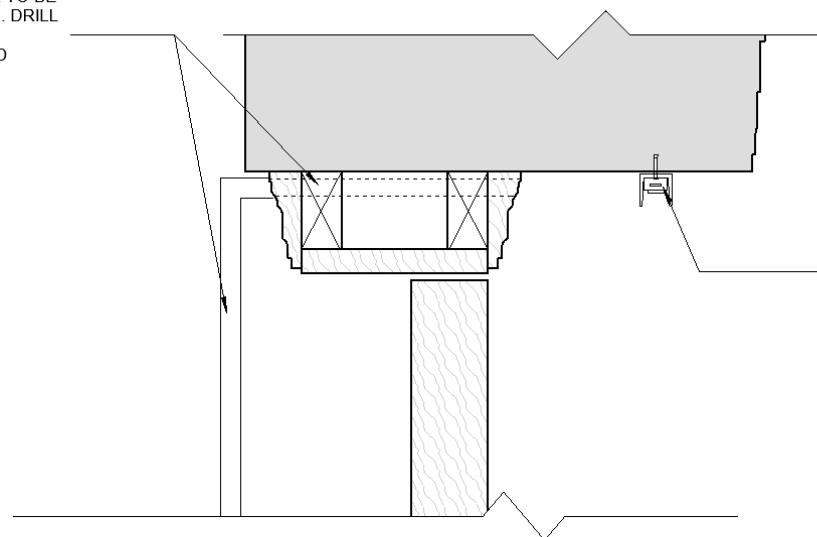


S25 LED LINEAR TAPE LIGHT SET IN 1" X 1" CHANNEL MOUNTED TO STONE HEADER WITH FLUSH MOUNT MASONRY ANCHORS.

S25 - Exterior LED Egress Lighting Fixture Mounting Detail - Typical
3" = 1'-0"

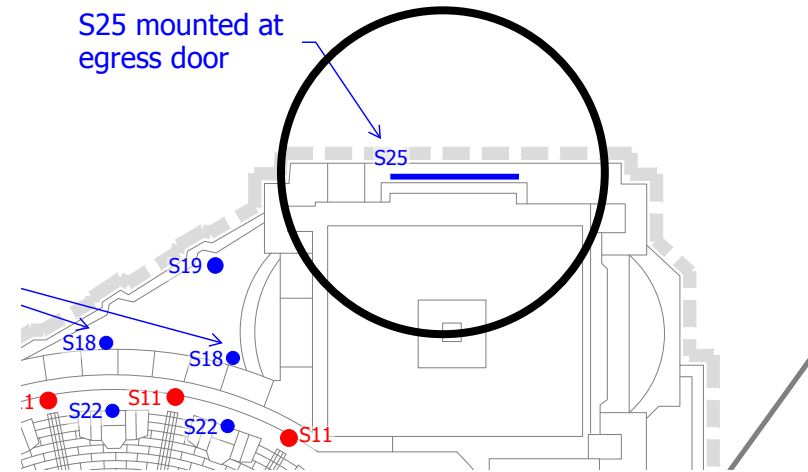


EXPOSED WIREMOLD WITH VESTIBULE TO BE ROUTED FROM FLOOR TO DOOR HEAD. DRILL HOLE IN EXISTING WINDOW FRAME TO ROUTE WIRING TO SURFACE MOUNTED FIXTURE. FILL WITH SEALANT.

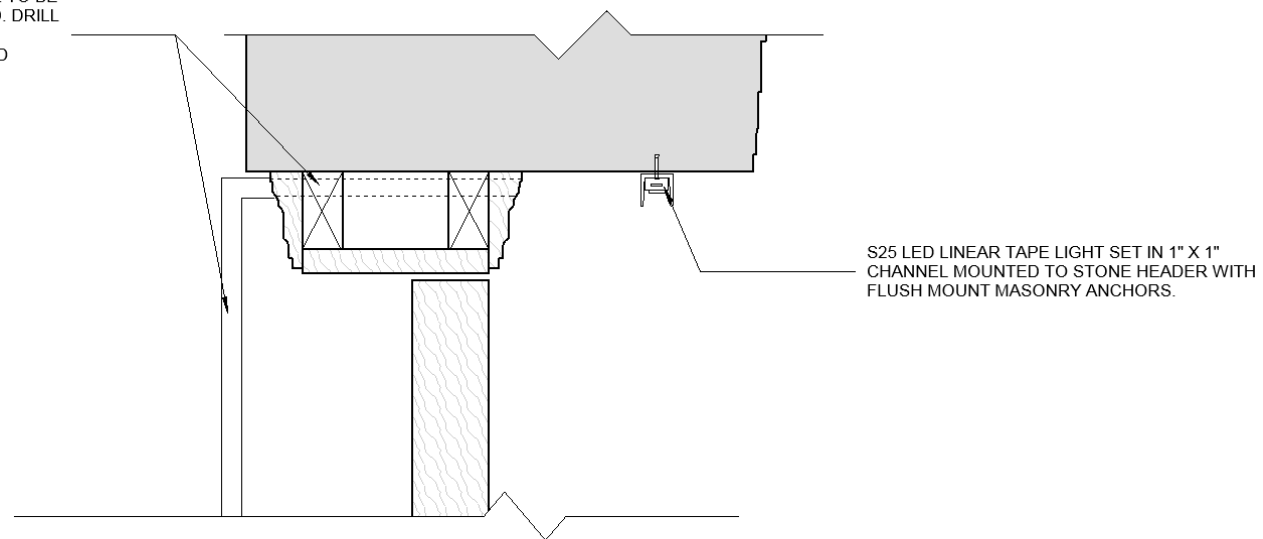


S25 LED LINEAR TAPE LIGHT SET IN 1" X 1" CHANNEL MOUNTED TO STONE HEADER WITH FLUSH MOUNT MASONRY ANCHORS.

S25 - Exterior LED Egress Lighting Fixture Mounting Detail - Typical
3" = 1'-0"



EXPOSED WIREMOLD WITH VESTIBULE TO BE ROUTED FROM FLOOR TO DOOR HEAD. DRILL HOLE IN EXISTING WINDOW FRAME TO ROUTE WIRING TO SURFACE MOUNTED FIXTURE. FILL WITH SEALANT.



S25 - Exterior LED Egress Lighting Fixture Mounting Detail - Typical
3" = 1'-0"





THANK
YOU