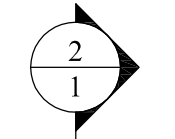


FACE OF BRICK

FACE OF BRICK

60 1/4



T.O. BRICK OPENING

T.O. BRICK OPENING

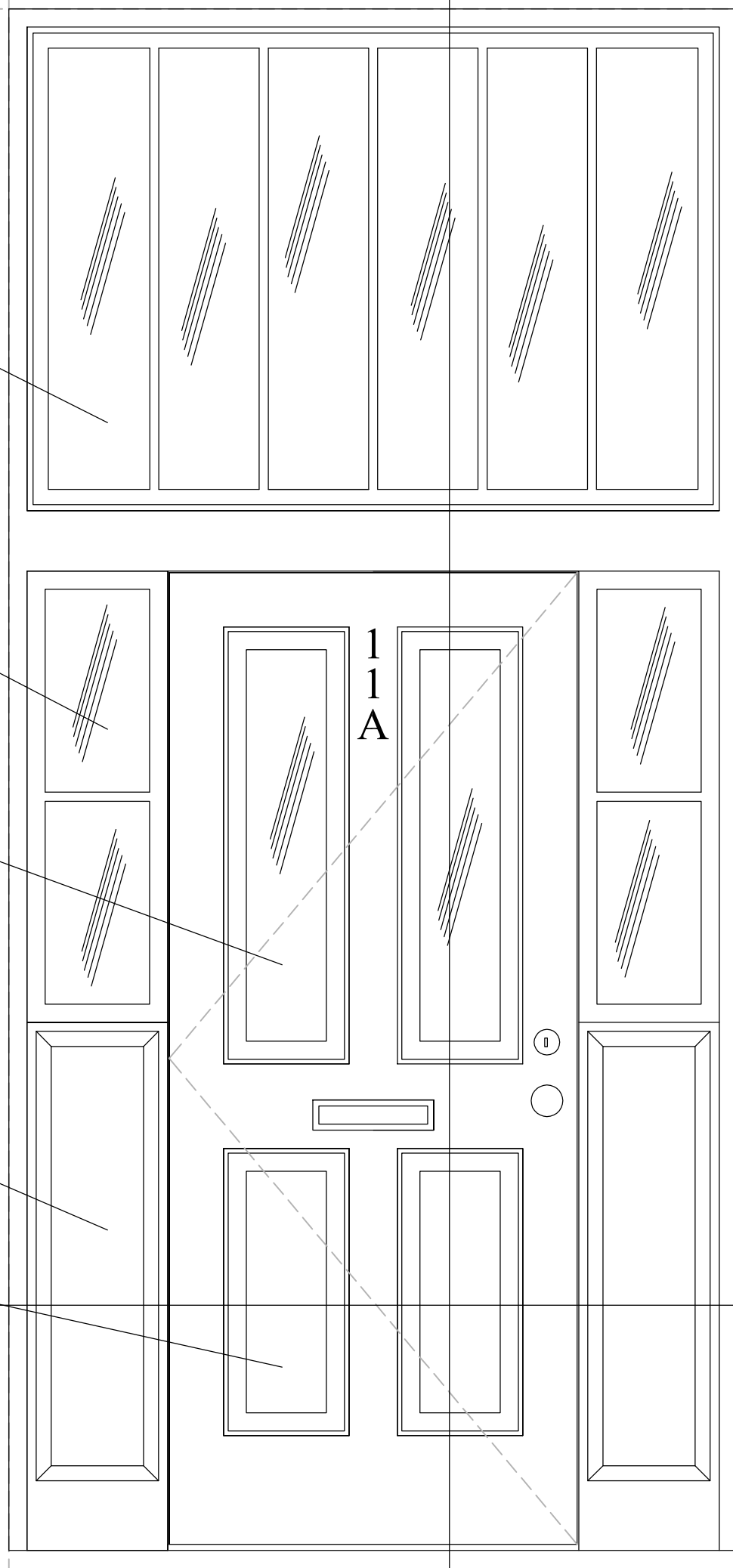
NEW TRANSOM SAFETY GLASS

SAFETY GLASS

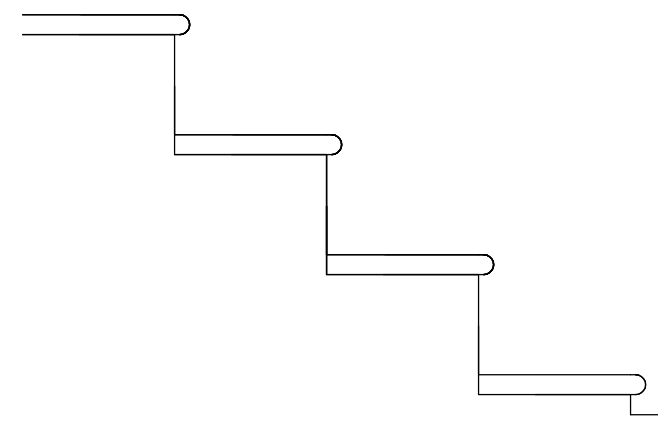
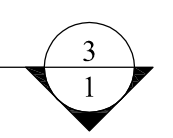
TOP TWO PANELS TO BE SAFETY GLASS

FLAT RECESSED PANELS

BOTTOM TWO PANELS ARE RAISED PANEL



1
1
A



41 1/2

5 3/8

80 3/8

7

WOOD DOOR AND FRAMES TO BE MAHOGANY OR SPANISH CEDAR

T.O. STONE STEP

T.O. SIDE WALK

T.O. SIDE WALK

1 ELEVATION
1" = 1'-0"

2 SECTION
1" = 1'-0"

WOOD DOOR AND FRAMES TO BE MAHOGANY OR SPANISH CEDAR

13 1/4 33 3/4 13 1/4

3 PLAN
1" = 1'-0"

ARCHITECTS STAMP

Notes:
All dimensions are from finish plaster or finished floor
KBW to verify all field dimensions prior to fabrication

Finish schedule:
SHOP FINISH, EXT. PRIMER
FINISH COLOR TO BE ACCEPTABLE TO LANDMRK SOUTH END COMMISSION

Material Legend

| | |
|-------------|--|
| Plywood: | |
| MDF: | |
| Solid wood: | |
| Stone: | |

Revisions:

| description: | date: |
|-------------------|---------|
| first submission | 9-27-18 |
| second submission | |
| third submission | |
| fourth submission | |
| fifth submission | |

GC: MF REYNOLDS
ARCHITECT: NA

SITE ADDRESS:
11A TAYLOR
BOSTON, MA

KIDDER BLAISDELL WOODWORKS CORP.
ARCHITECTURAL MILLWORK SINCE 1996
KIDDERBLAISDELL.COM
508-776-2928
20 Bender St
Winchester, MA 01890

Drawn by: Jeff Blaisdell
EXT. ENTRY DOOR
scale 1"=1' or noted when 24"x36"
date 9-27-18 kbwc job#588





15

