



121 High Street - View of Corner  
of High and Pearl Streets





NATION L  
California

BEST OF  
BOSTON  
2011

LUNETTE  
OPTIC

121 High Street





125 PEARL STREET

MICHELE INTERNATIONAL  
Boston • Ireland • California

125 Pearl Street Existing Facade





125 PEARL STREET

MICHELE INTERNATIONAL  
Boston Ireland California

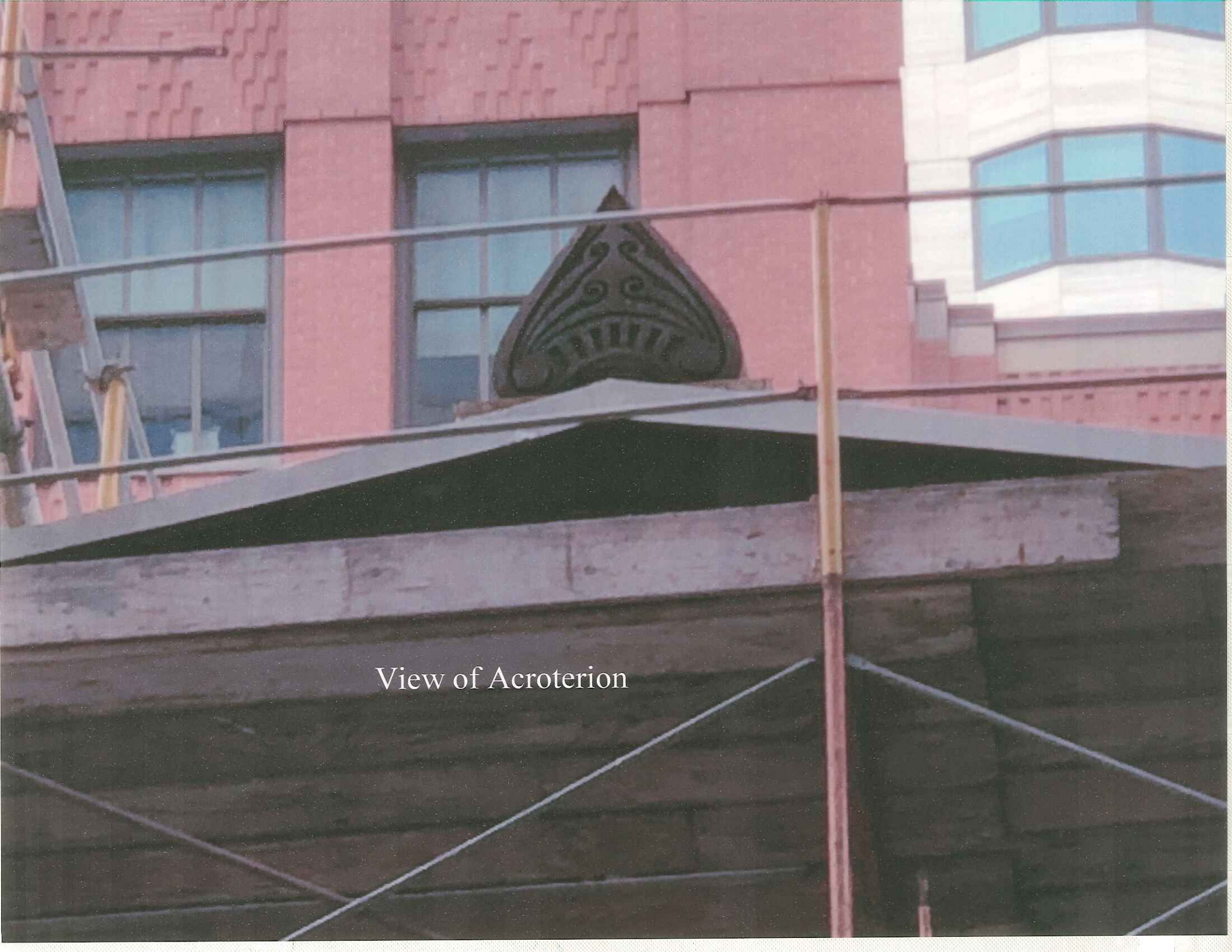
View of 125 Pearl Street Entrance





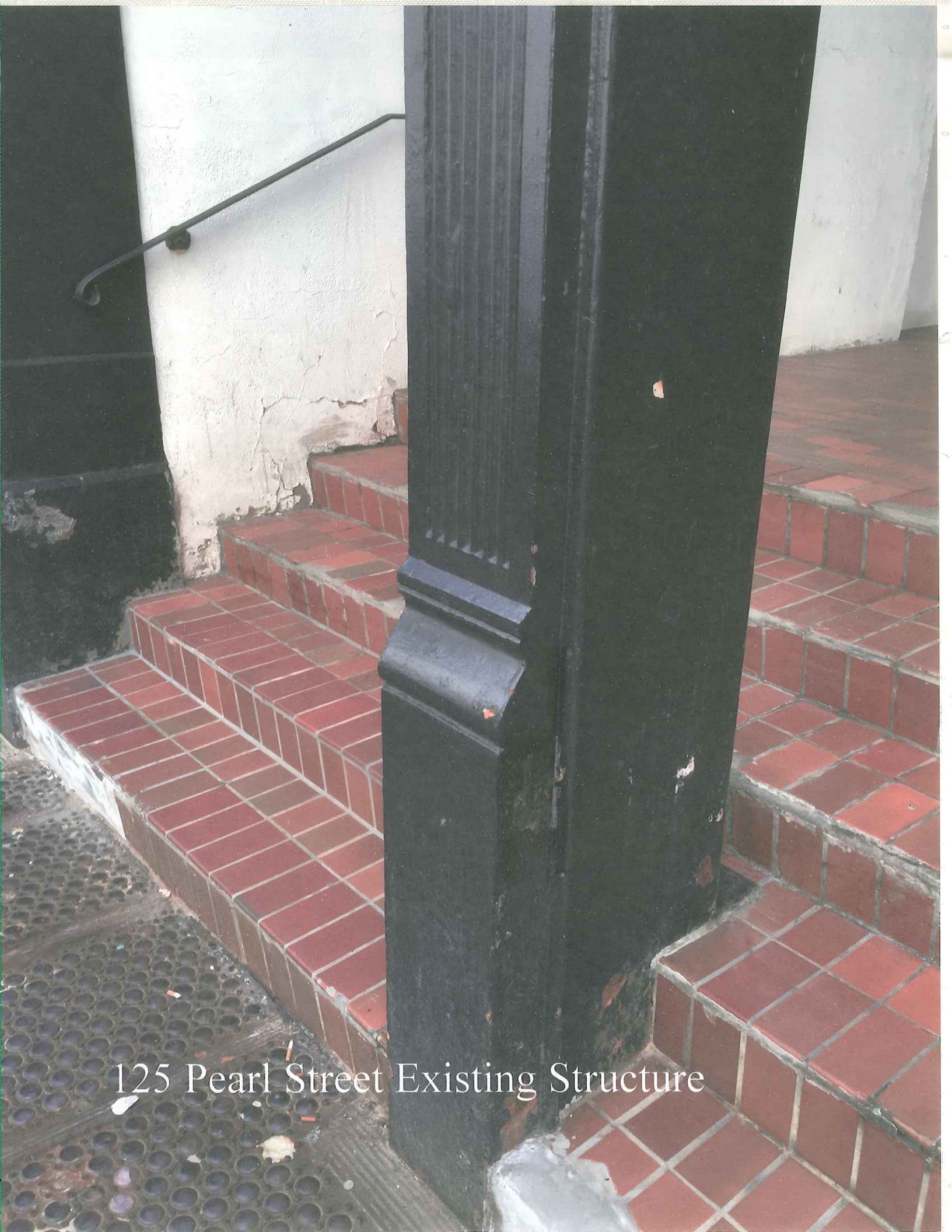
View of Pearl Street





View of Acroterion





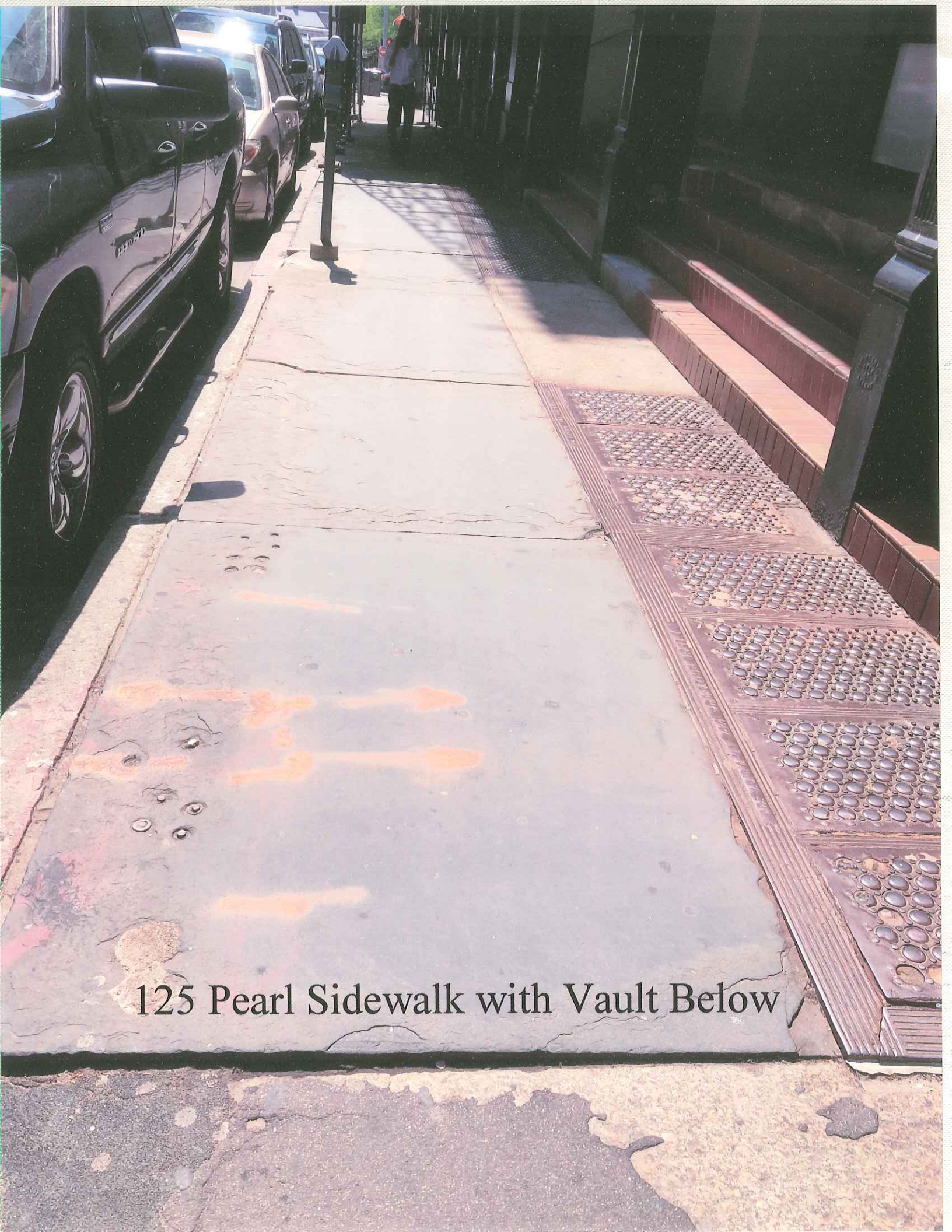
125 Pearl Street Existing Structure





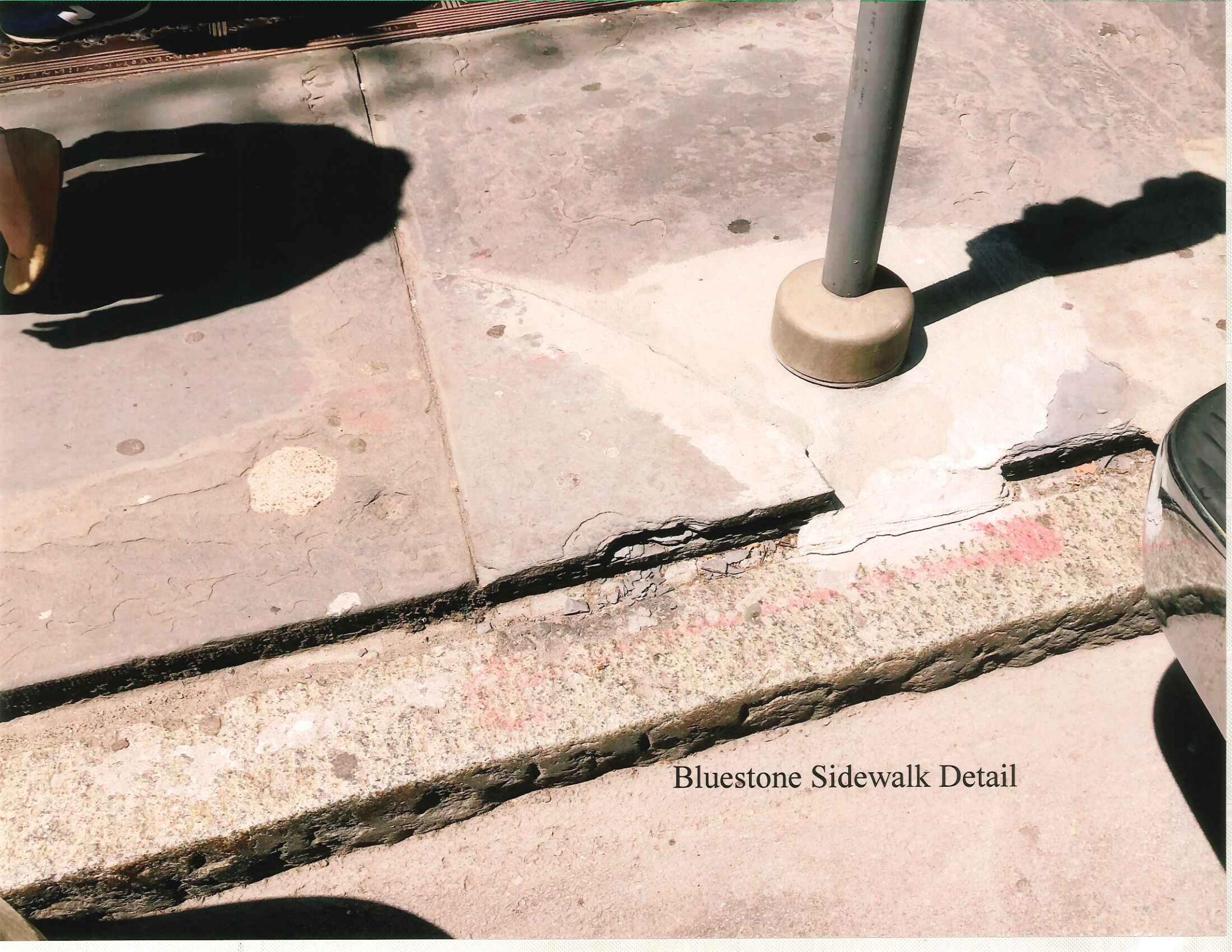
Pearl Street Sidewalk with Vault Below





125 Pearl Sidewalk with Vault Below





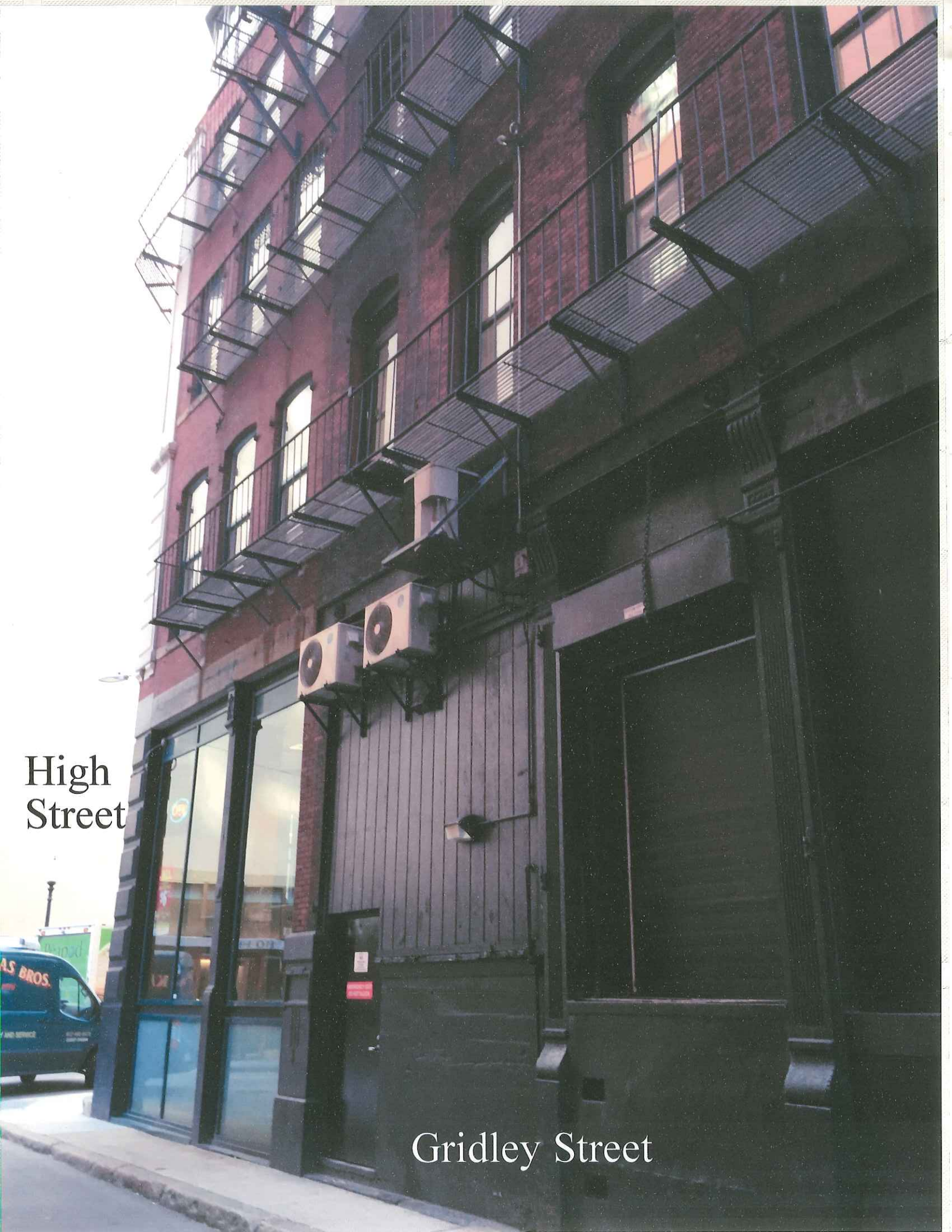
Bluestone Sidewalk Detail





Sidewalk of 115-123 Pearl Street  
Looking towards Atlantic Avenue

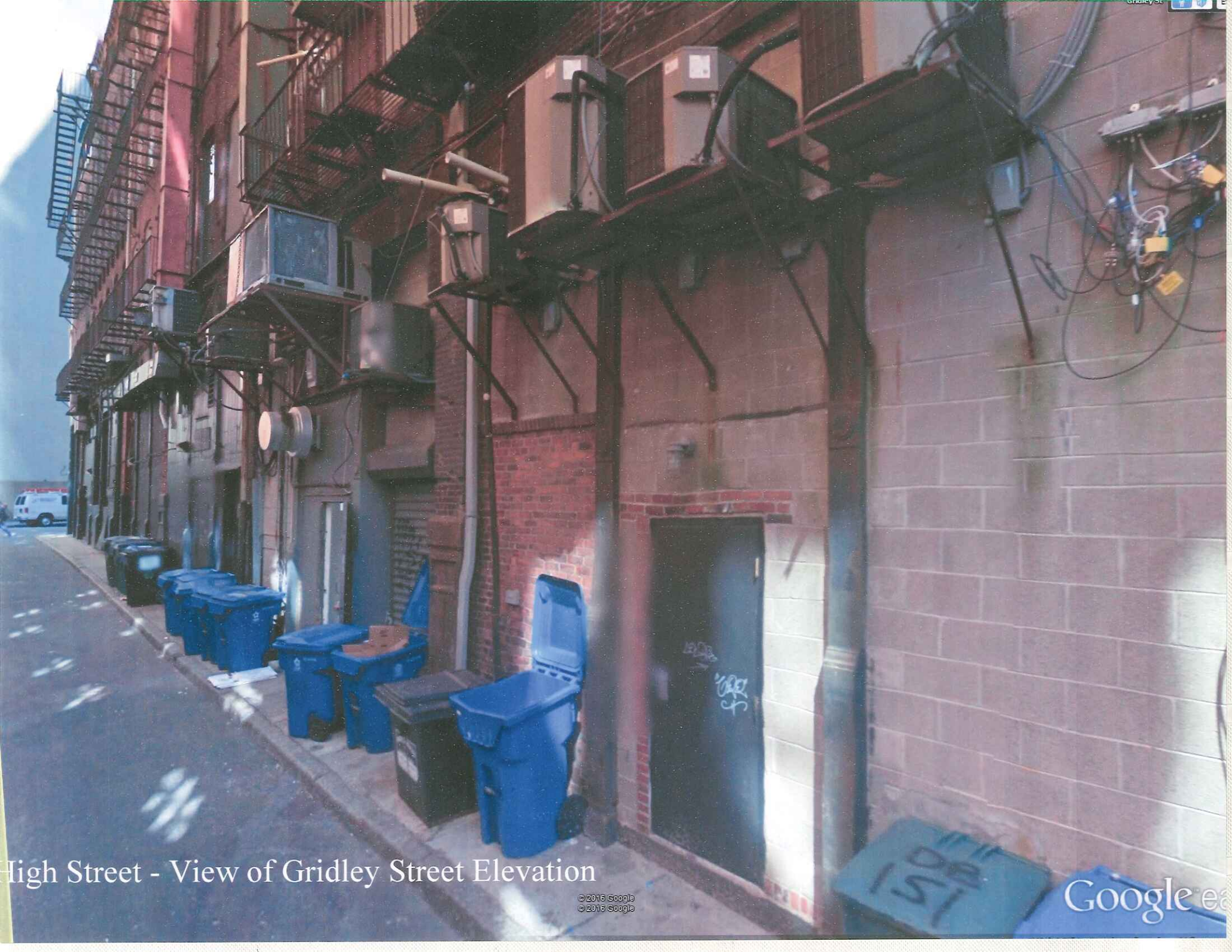




High  
Street

Gridley Street





High Street - View of Gridley Street Elevation

© 2016 Google  
© 2016 Google

Google e





View of Gridley Street Facade



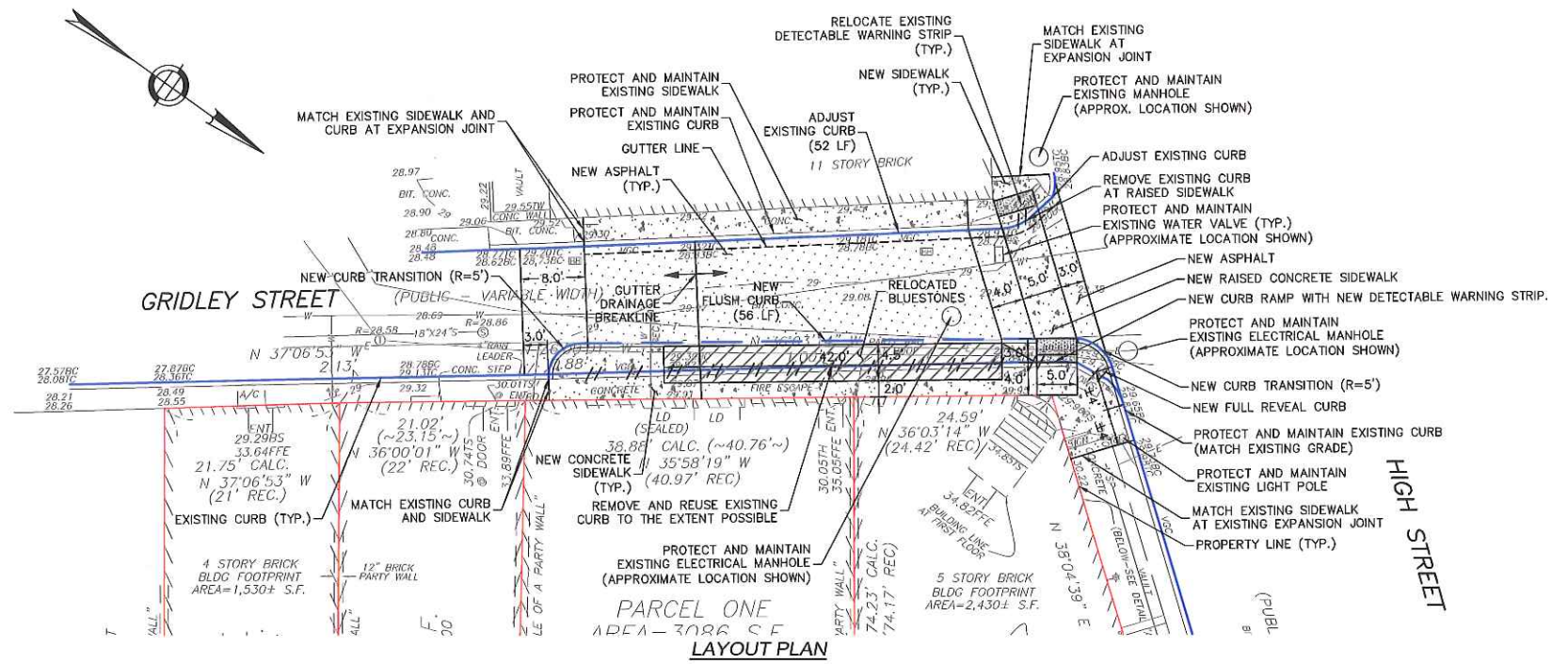


View of High Street Facade





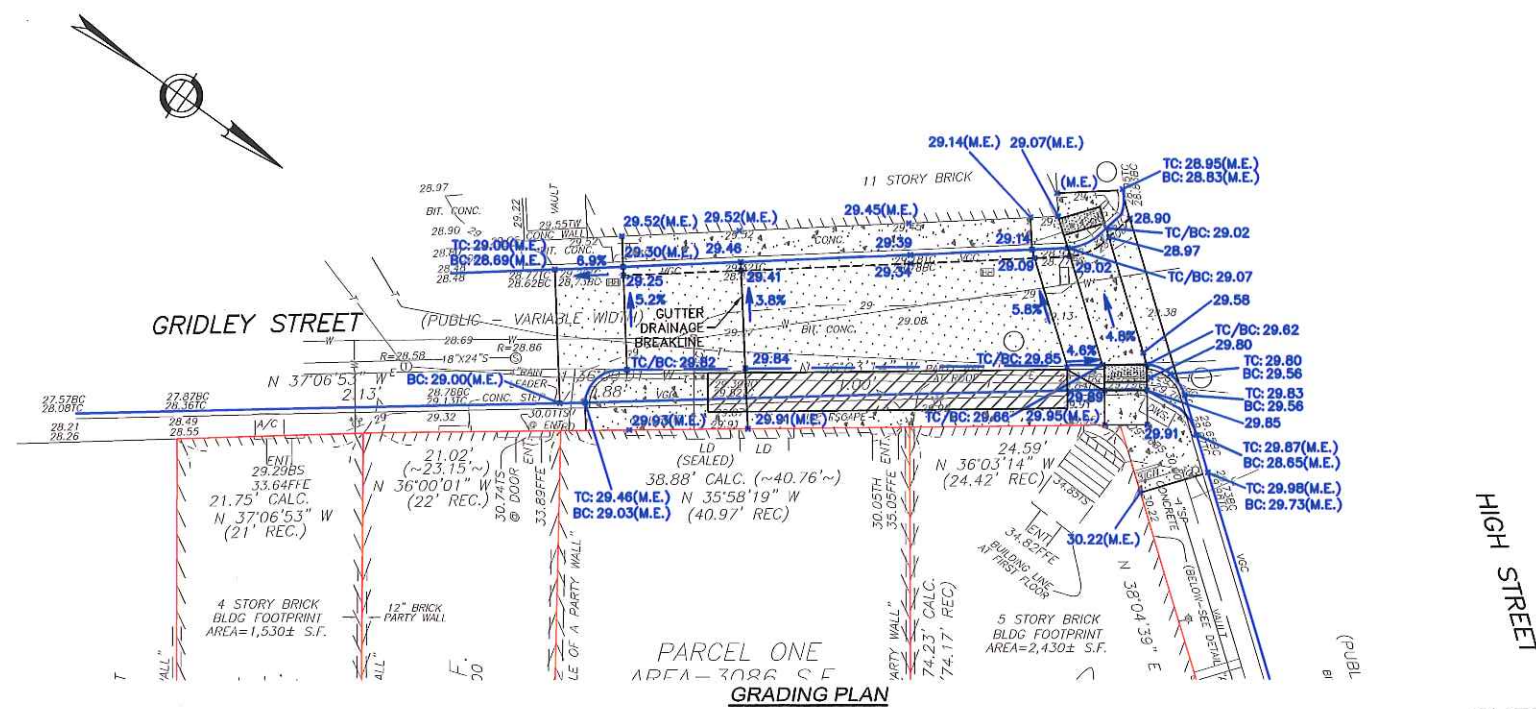
**LOCUS PLAN**  
NOT TO SCALE  
SOURCE: GOOGLE MAPS



**LEGEND**

- NEW SIDEWALK
- NEW ASPHALT
- RELOCATED BLUE STONE
- PROPOSED SPOT GRADE  $\times$  29.86
- PROPOSED SPOT GRADE (TO MATCH EXISTING)  $\times$  29.86(M.E.)
- PROPOSED TOP/BOTTOM OF CURB ELEVATION  $\times$  TC=29.87(M.E.)  
 $\times$  BC=28.65(M.E.)
- GUTTER LINE
- PROPOSED CURB
- EXISTING CURB
- PROPERTY LINE

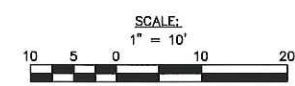
**NOTE:**  
PROTECT AND MAINTAIN ALL UTILITY STRUCTURES, AND ADJUST TO FINISHED GRADE WITHIN LIMIT OF WORK.



FOR REGISTRY USE ONLY

TO THE BEST OF MY KNOWLEDGE, INFORMATION, AND BELIEF, I CERTIFY THAT THIS PLAN HAS BEEN PREPARED IN CONFORMANCE WITH THE RULES AND REGULATIONS OF THE REGISTERS OF DEEDS.

JOHN M. SCHMID  
MASSACHUSETTS REG. NO. 39155  
REGISTERED PROFESSIONAL ENGINEER



PUBLIC IMPROVEMENT COMMISSION  
CHIEF ENGINEER

CHECKED FOR GENERAL DESIGN AND CONFORMITY TO CITY STANDARDS

PUBLIC WORKS DEPARTMENT

APPROVED

COMMISSIONER OF PUBLIC WORKS

**Nitsch Engineering**

PREPARED BY:  
NITSCH ENGINEERING  
2 CENTER PLAZA, SUITE 430  
BOSTON, MA 02108  
PHONE: 617-338-0063

DESIGNED BY: KAQ  
DRAWN BY: KAQ  
CHECKED BY: JMS

NITSCH PROJECT NUMBER: 12873  
NITSCH FILE NAME: 12873PIC

PLAN SHOWING THE SPECIFIC REPAIRS IN GRIDLEY STREET IN DOWNTOWN BOSTON.

CITY OF BOSTON PUBLIC WORKS DEPARTMENT  
ENGINEERING DIVISION  
SPECIFIC REPAIRS PLAN

**GRIDLEY STREET AT HIGH STREET**

DOWNTOWN BOSTON

SCALE: AS NOTED

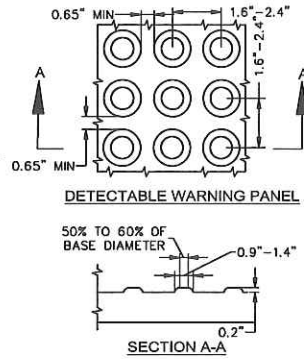
DIVISION ENGINEER

JUNE, 2018

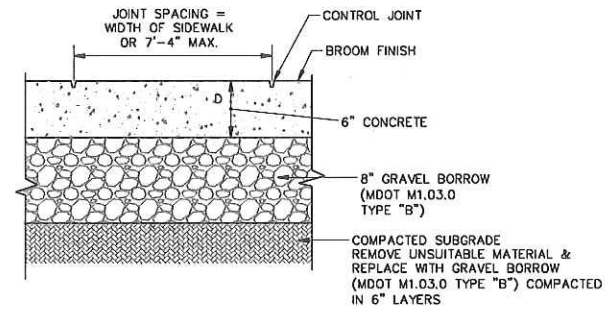


**NOTES:**

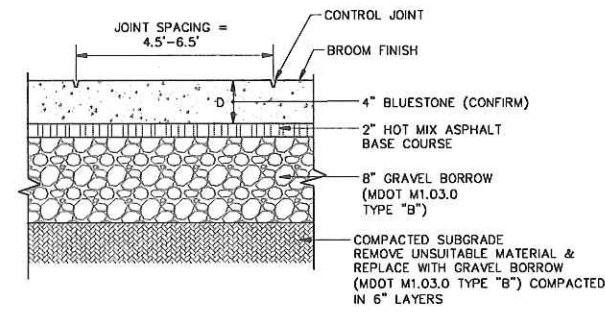
1. DETECTABLE WARNING PANELS SHALL BE PERMANENTLY APPLIED TO THE RAMP.
2. DETECTABLE WARNING PANELS SHALL CONTRAST VISUALLY WITH THE ADJACENT WALKWAY SURFACES PER THE FOLLOWING COLOR SCHEDULE:  
  - PALE YELLOW ON CEMENT CONCRETE PEDESTRIAN RAMP
3. DETECTABLE WARNING PANELS SHALL BE AS MANUFACTURED BY ADA SOLUTIONS, INC. OF NORTH BILLERICA, MA OR AN APPROVED EQUAL.
4. DETECTABLE WARNING PANELS SHALL BE INSTALLED PER THE MANUFACTURER'S RECOMMENDATIONS.



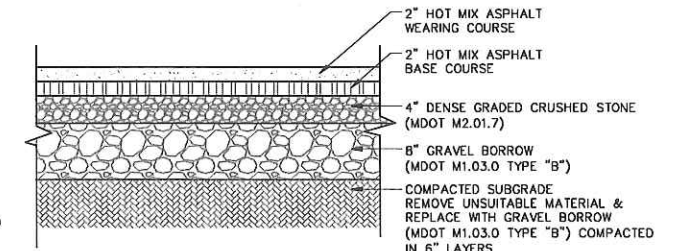
**DETECTABLE WARNING PANEL FOR PEDESTRIAN RAMP**  
NOT TO SCALE



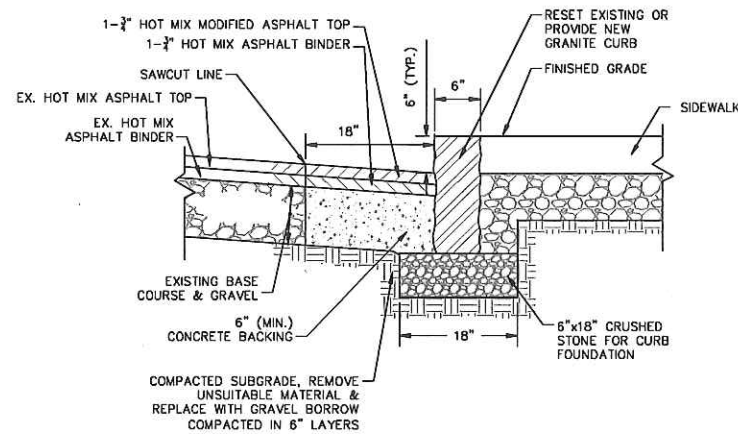
**CONCRETE SIDEWALK (PUBLIC WAY)**  
NOT TO SCALE



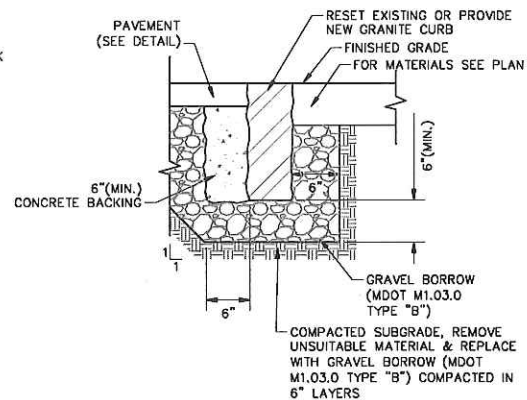
**BLUESTONE PAVER (PUBLIC WAY)**  
NOT TO SCALE



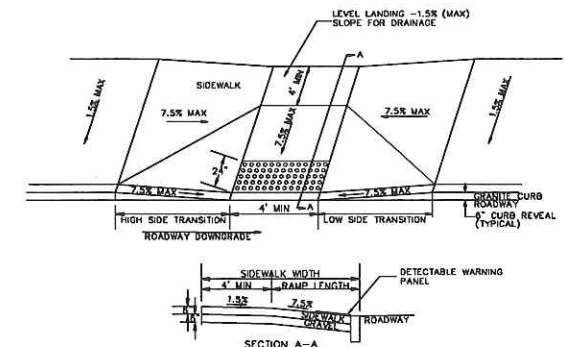
**HOT MIX ASPHALT PAVING (TWO COURSES) DETAIL**  
NOT TO SCALE



**CURB SETTING DETAIL**  
NOT TO SCALE



**FLUSH CONCRETE CURB SETTING DETAIL**  
NOT TO SCALE



**PEDESTRIAN RAMP DETAIL**  
NOT TO SCALE

FOR REGISTRY USE ONLY

TO THE BEST OF MY KNOWLEDGE, INFORMATION, AND BELIEF, I CERTIFY THAT THIS PLAN HAS BEEN PREPARED IN CONFORMANCE WITH THE RULES AND REGULATIONS OF THE REGISTERS OF DEEDS.

JOHN M. SCHMID  
MASSACHUSETTS REG. NO. 39155  
REGISTERED PROFESSIONAL ENGINEER

PUBLIC IMPROVEMENT COMMISSION

CHIEF ENGINEER

CHECKED FOR GENERAL DESIGN AND CONFORMITY TO CITY STANDARDS

PUBLIC WORKS DEPARTMENT

APPROVED

COMMISSIONER OF PUBLIC WORKS



PREPARED BY:  
NITSCH ENGINEERING  
2 CENTER PLAZA, SUITE 430  
BOSTON, MA 02108  
PHONE: 617-338-0063

DESIGNED BY: KAO  
DRAWN BY: KAO  
CHECKED BY: JMS

NITSCH PROJECT NUMBER: 12873  
NITSCH FILE NAME: 12873PIC

**SHEET 2 OF 2 DRAFT**

PLAN SHOWING THE SPECIFIC REPAIRS IN GRIDLEY STREET IN DOWNTOWN BOSTON.

CITY OF BOSTON PUBLIC WORKS DEPARTMENT  
ENGINEERING DIVISION  
SPECIFIC REPAIRS PLAN

**GRIDLEY STREET AT HIGH STREET**

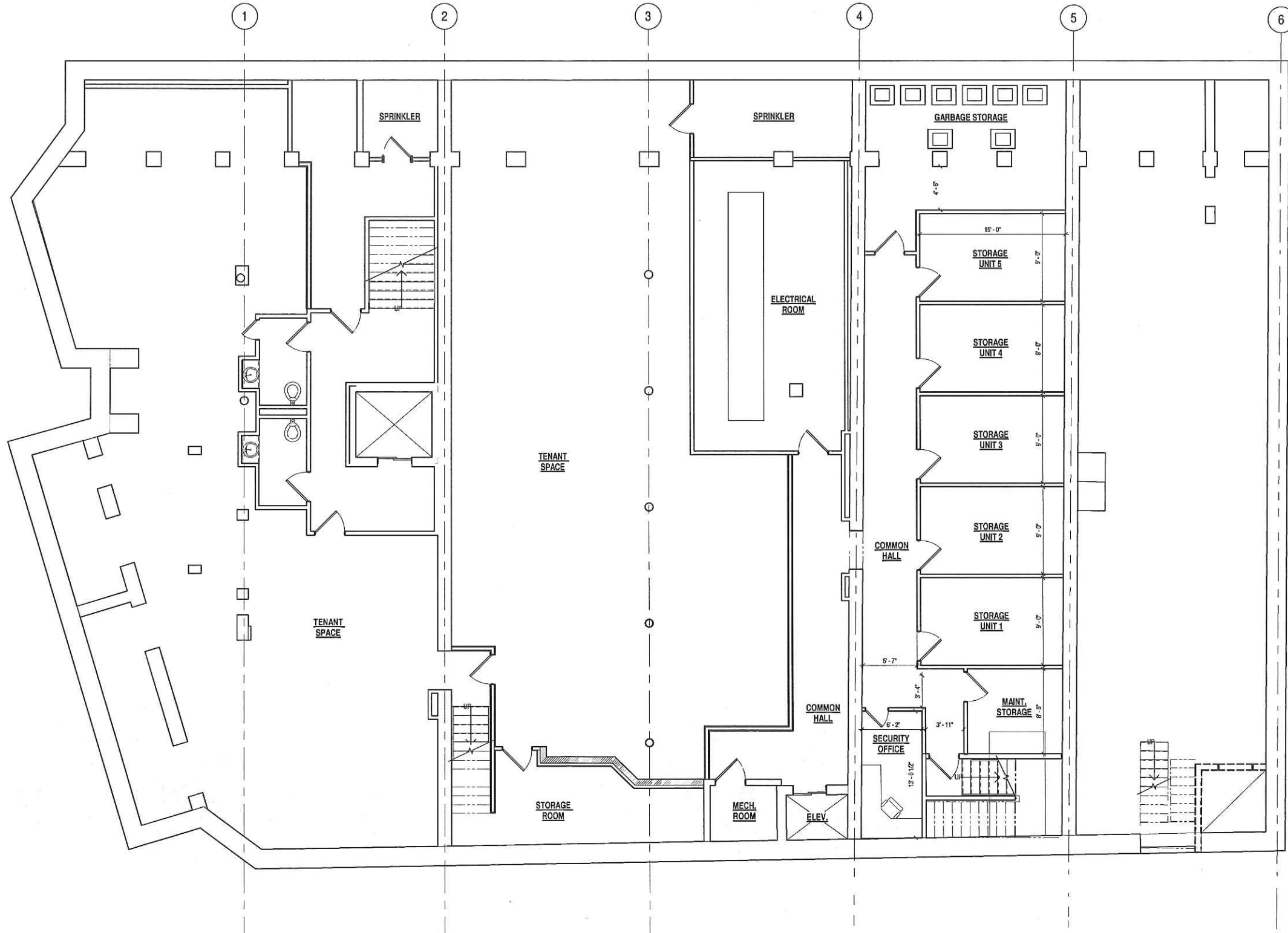
DOWNTOWN BOSTON

SCALE: AS NOTED

DIVISION ENGINEER

JUNE, 2018





**Timothy Burke**  
 ARCHITECTURE  
 142 BERKELEY STREET, BOSTON MASSACHUSETTS 02116  
 P: 617.266.1832 | W: timothyburke.net | F: 617.266.1116

REV.	DATE	DESCRIPTION	CA/B

PROPOSED BASEMENT

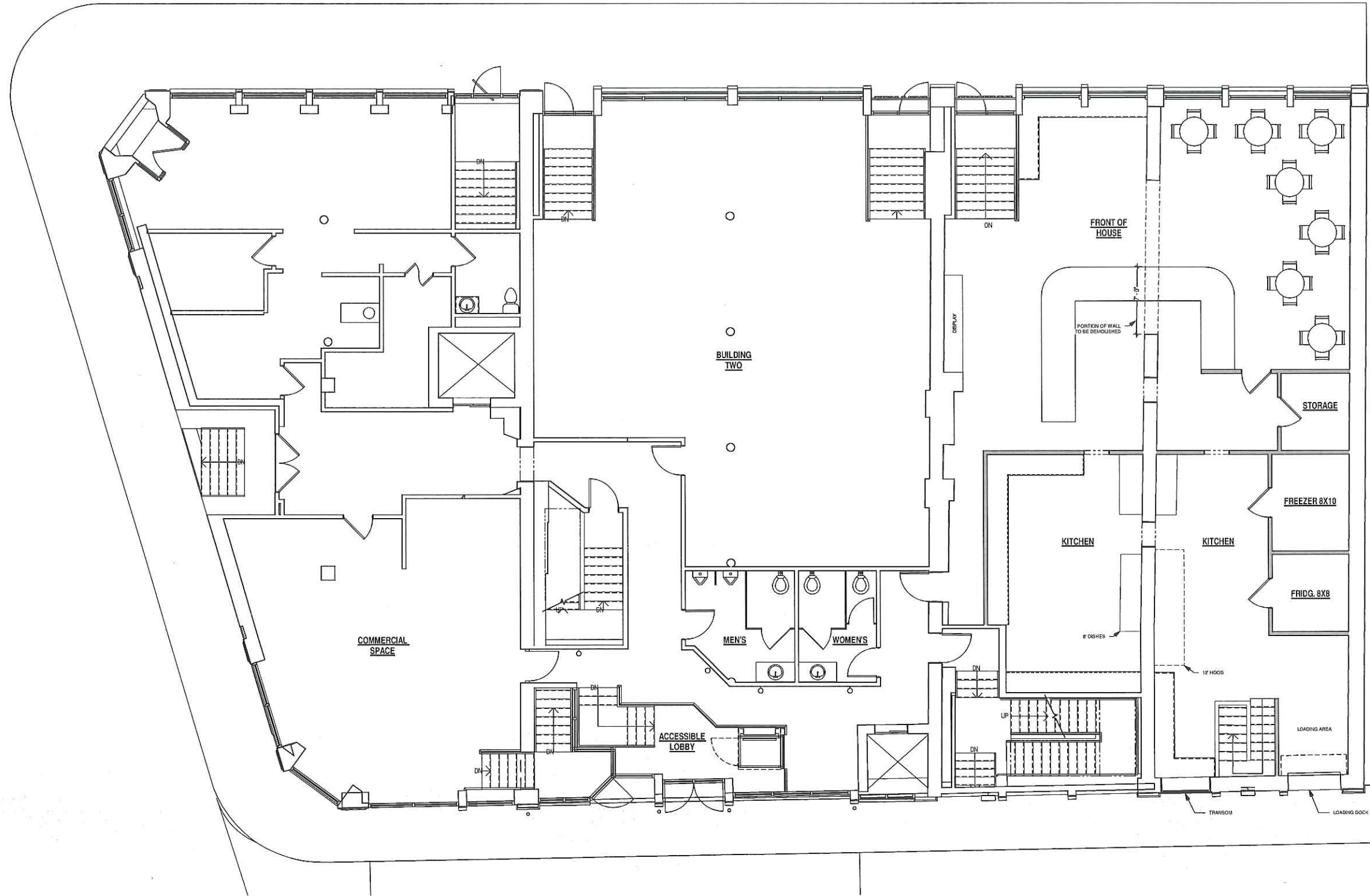
PROPOSED BASEMENT

Checker

**A1.0**

1 BASEMENT - PROPOSED PLAN  
 3/16" = 1'-0"





**Timothy Burke**  
**ARCHITECTURE**  
 142 BERKELEY STREET, BOSTON MASSACHUSETTS 02116  
 P: 617.266.1332 | W: timothyburke.net | F: 617.266.1116



REV.	DATE	DESCRIPTION	CAD

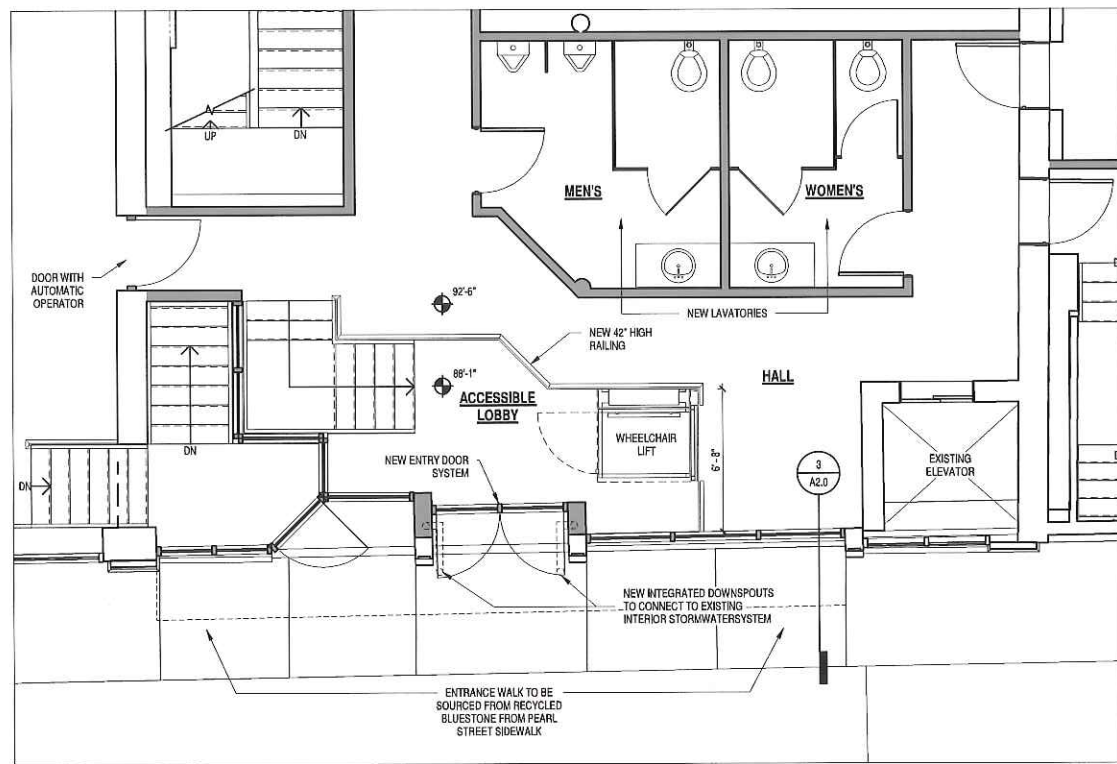
PROPOSED FIRST FLOOR

121 High Street  
 Boston, MA 02110

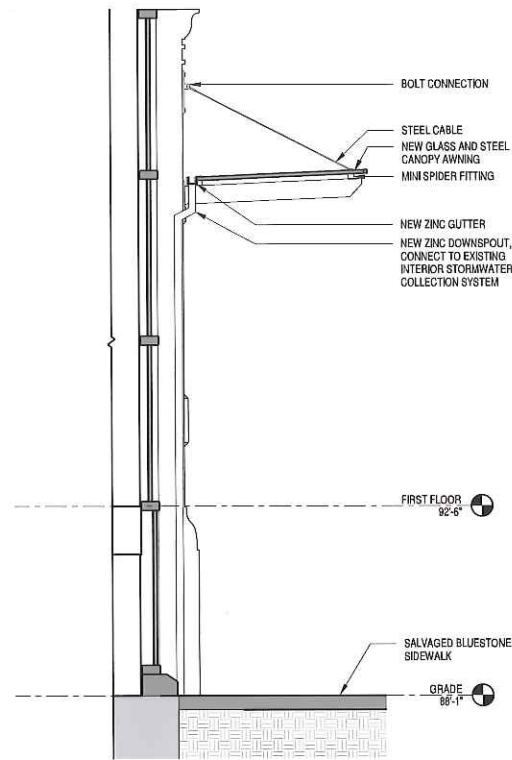
1 FIRST FLOOR - PROPOSED PLAN  
 3/16" = 1'-0"

A1.1





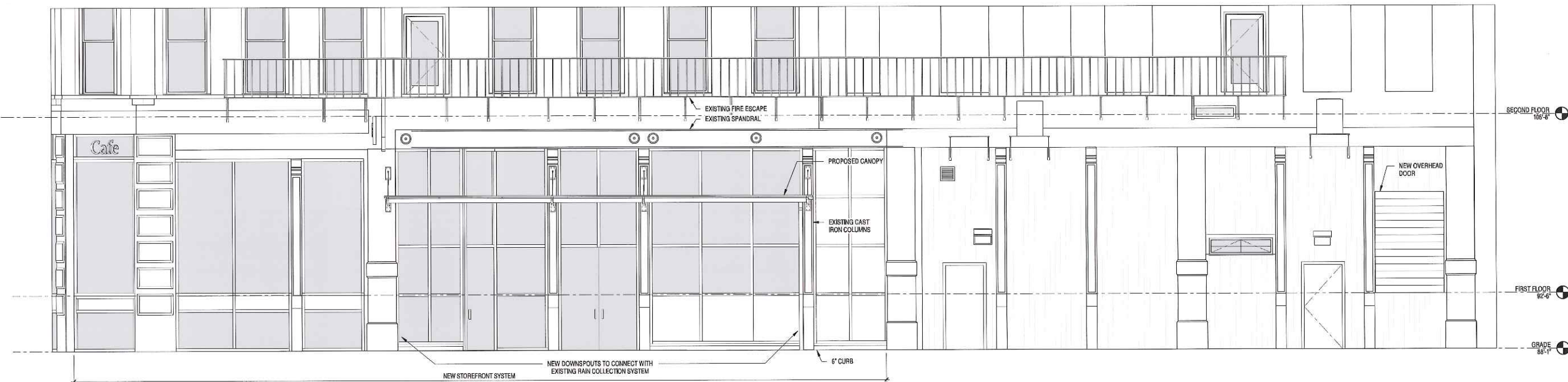
2 ACCESSIBLE LOBBY PLAN  
1/4" = 1'-0"



3 CANOPY SECTION DETAIL  
1/2" = 1'-0"



4 FACADE RENDER-GRIDLEY ST.



1 GRIDLEY STREET ELEVATION DETAILED  
1/4" = 1'-0"



**Timothy Burke**  
ARCHITECTURE  
142 BERKELEY STREET, BOSTON MASSACHUSETTS 02116  
P: 617.265.1532 | W: timothyburke.net | F: 617.265.1116

REV.	DATE	DESCRIPTION	CUB

GRIDLEY STREET

121 High Street  
Boston, MA 02110

A2.0



