

Boston Landmarks Commission

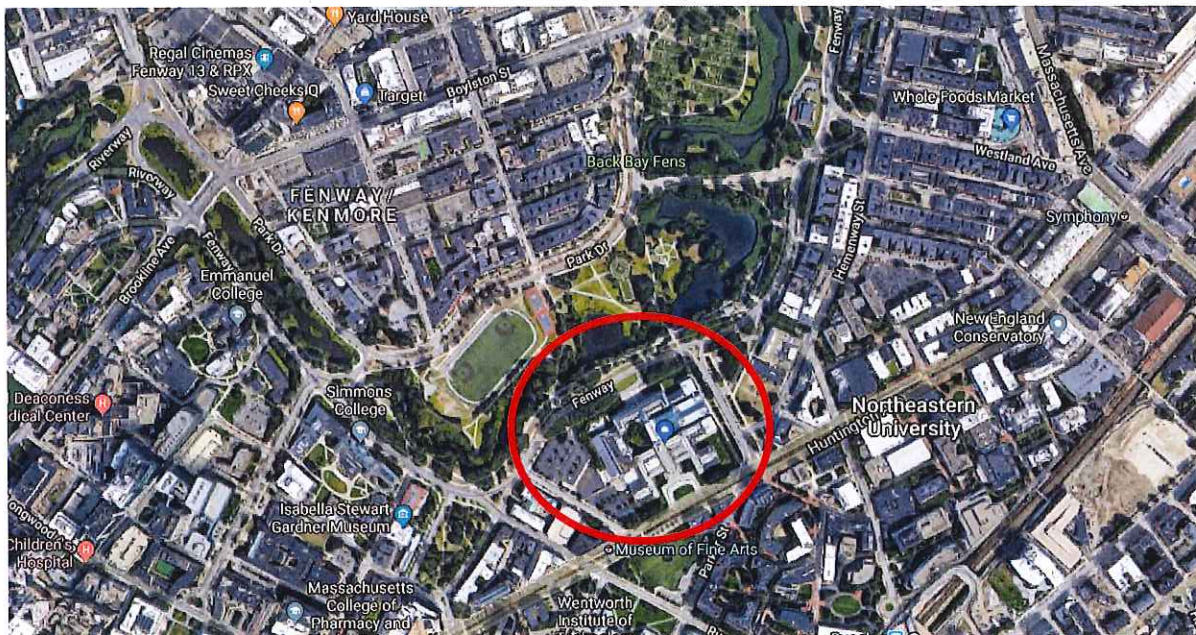
August 1, 2018

Proponent

The Trustees of the Museum of Fine Arts, Boston, is a charitable institution created by special act of the Massachusetts legislature in 1870 for the purpose of “the preservation and exhibition of works of art, of making, maintaining and exhibiting collections of such works, and of affording instruction in the fine arts”. The address of the proponent is Museum of Fine Arts, Boston, 465 Huntington Avenue, Boston, Massachusetts 02115-5523.

Project Site

The site comprises approximately 11.7 acres in Boston’ Fenway neighborhood and is bounded by Huntington Avenue to the south, Forsyth Way to the east, the Fenway roadway to the north and Museum Road to the west.



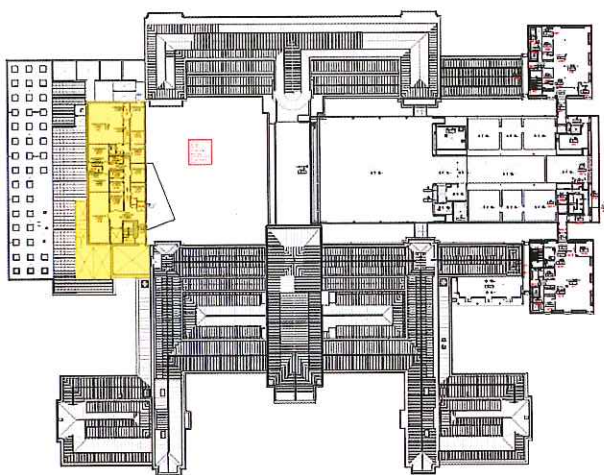


Existing Building Description

The Museum moved from its original home in Copley Square to its current building upon completion of the Beaux-Arts Guy Lowell building in 1909. Subsequent additions, also designed by Guy Lowell, were completed in 1915 and 1928. The George Robert White Wing, in which the Project is located, was designed by Hugh Stubbins and completed in 1970. The West Wing, designed by IM Pei, was completed in 1981 and completely envelops the White Wing. Finally, the East Wing, designed by Foster and Partners, was dedicated in 2010. (A complete building history can be found on the MFA website.) The current building contains approximately 617,000 square feet of gross floor area devoted to a variety of Museum uses, including art galleries; an auditorium, seminar and meeting rooms; curatorial, conservation and research facilities; offices for museum staff; catering, restaurants and gift shops; and a loading dock and accessory and ancillary parking.

Project Description

The project area consists of a renovation of approximately 22,000 square feet of existing space on the third and fourth floors of the White Wing. The third floor was first designed as a library and is presently used for administrative space while the fourth floor was purpose-built as spaces for painting and objects conservation. The renovated Conservation Center will consist of six collaborative laboratories for paintings, objects, frame and furniture conservation, as well as mount making, time based media and conservation research. Moving the conservators to this new space will free up previously closed galleries. Featuring upgraded technology and air-handling systems, the new Conservation Center will have open floor plans with new sawtooth skylights that maximize use of diffused natural light, and increased area for public interaction. The public space includes classroom/workshop and areas for permanent and programmed displays. An entirely new, efficient climate control system along with new fenestration, mechanical systems and scientific research equipment will enhance and expand the conservators' capabilities and efficiency. The completed center will be tailored to current conservation practice, yet flexible enough for the variety of artworks and treatments expected in the future.



White Building highlighted in yellow.

Specific Exterior changes

Sawtooth skylights:

A key element in the renovation is the addition of five sawtooth skylights that introduce diffused north light in the Painting and Objects lab on the fourth floor. This light recreates the conditions of an artist’s studio, allowing the conservators to view the art in its historic context without the aid of artificial light. As an exterior element, the proposed sawtooth skylights provide a suitable backdrop for the adjacent IM Pei building. The rhythm of sawtooth standing seam metal roofs complements the rhythm of the glass sections of the barrel vault. Both the barrel vault and the sawtooth skylights are forms that rise above the rooflines of their respective buildings to bring light down into the spaces below.



Section of Sawtooth skylights with diffused north light

Windows:

The renovations will result in substantial upgrades to the building envelope, helping ensure the safety of the people and objects it houses. Part of this upgrade is the replacement of the existing metal windows with new energy efficient, high performance insulated glass units (IGUs) and metal window frames. This upgrade is necessary to prevent condensation on the windows because of the museum-grade climate control, which has elevated humidity. The replacement frames will be very close in appearance to the existing, deteriorated windows in style, profile and color. To accommodate the high performance IGUs the frame will need to be minimally larger than the existing frame, which should not be visibly discernable from the original windows.

Mechanical Equipment on the roof:

The renovation will also result in new and vastly more efficient heating, ventilating and air conditioning equipment. A new chiller and two new air handlers will be placed on the roof of the building along with the required exhaust ducts to service the specialty labs.

Permits and Approvals

The Museum site is located in PDA No. 63, which covers the Museum site as well as the School of the Museum of Fine Arts across Museum Road from the Museum building.

The property is included in the Inventory of Historic and Archaeological Assets of the Commonwealth and has been determined by the Boston Landmarks Commission (BLC) and the Massachusetts Historical Commission to be individually eligible for listing in the State and National Registers of Historic Places. In addition, the property has a pending status with the BLC.

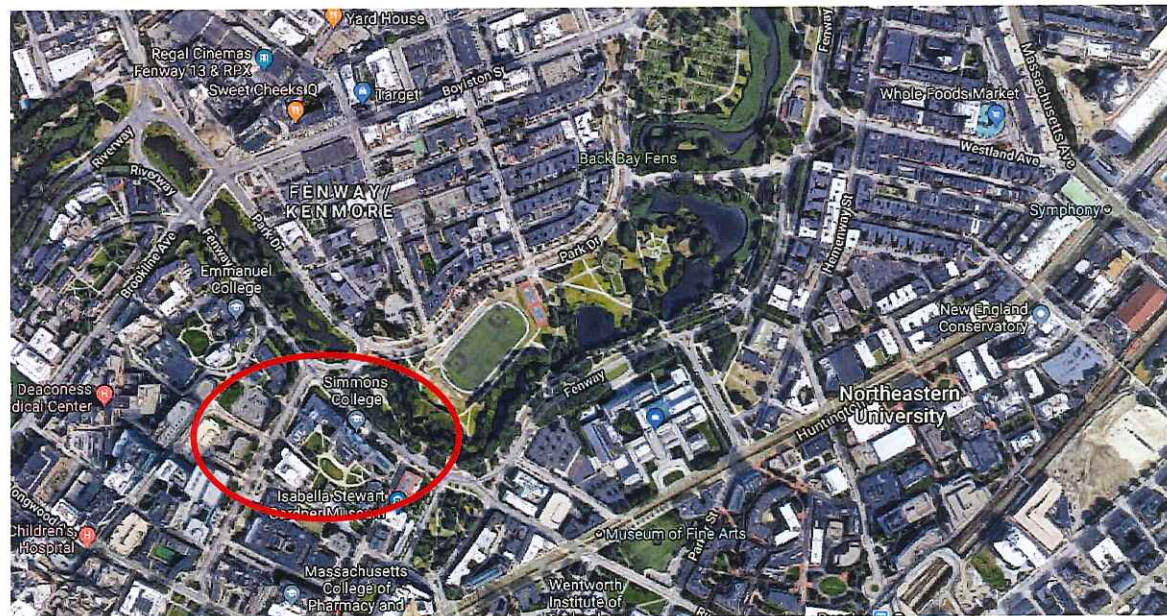
The Boston Planning and Development Agency (BPDA) has determined that the Conservation Center Project, which will not increase building

dimensions nor introduce any new uses, is consistent with the previously approved PDA Development Plan, subject to staff-level design review, which the Proponent anticipates completing in parallel with BLC staff review.

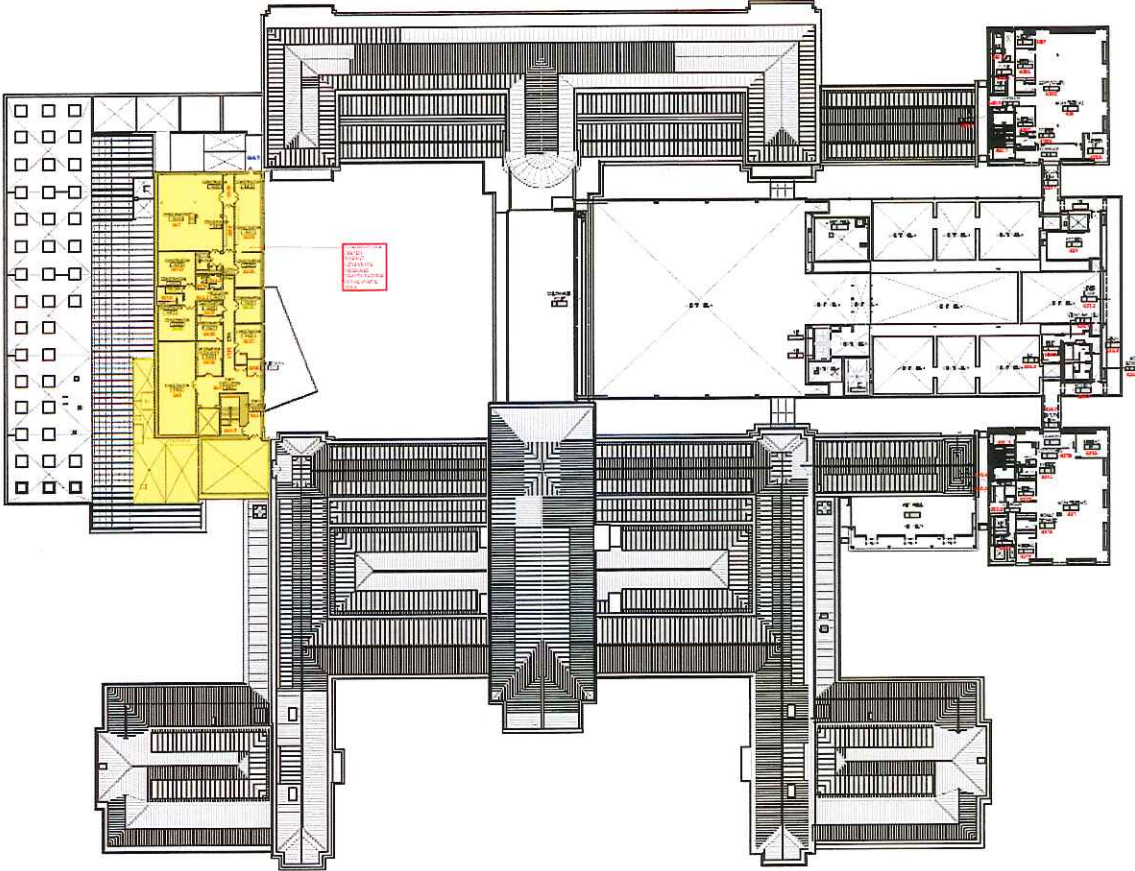
This application to BLC is related to the exterior project features; specifically, new rooftop mechanical units and exhaust ducts, new sawtooth skylights and replacement exterior windows. The new sawtooth skylights are minimally visible from Huntington Avenue and the Fenway, and are slightly more noticeable from Museum Road. The new mechanical units are minimally visible from Huntington Avenue and Museum Road, with only an exhaust vent visible from the Fenway. New windows are visible only from the interior courtyard of the museum.

Museum of Fine Arts, Boston Conservation Center Project

August 1, 2018



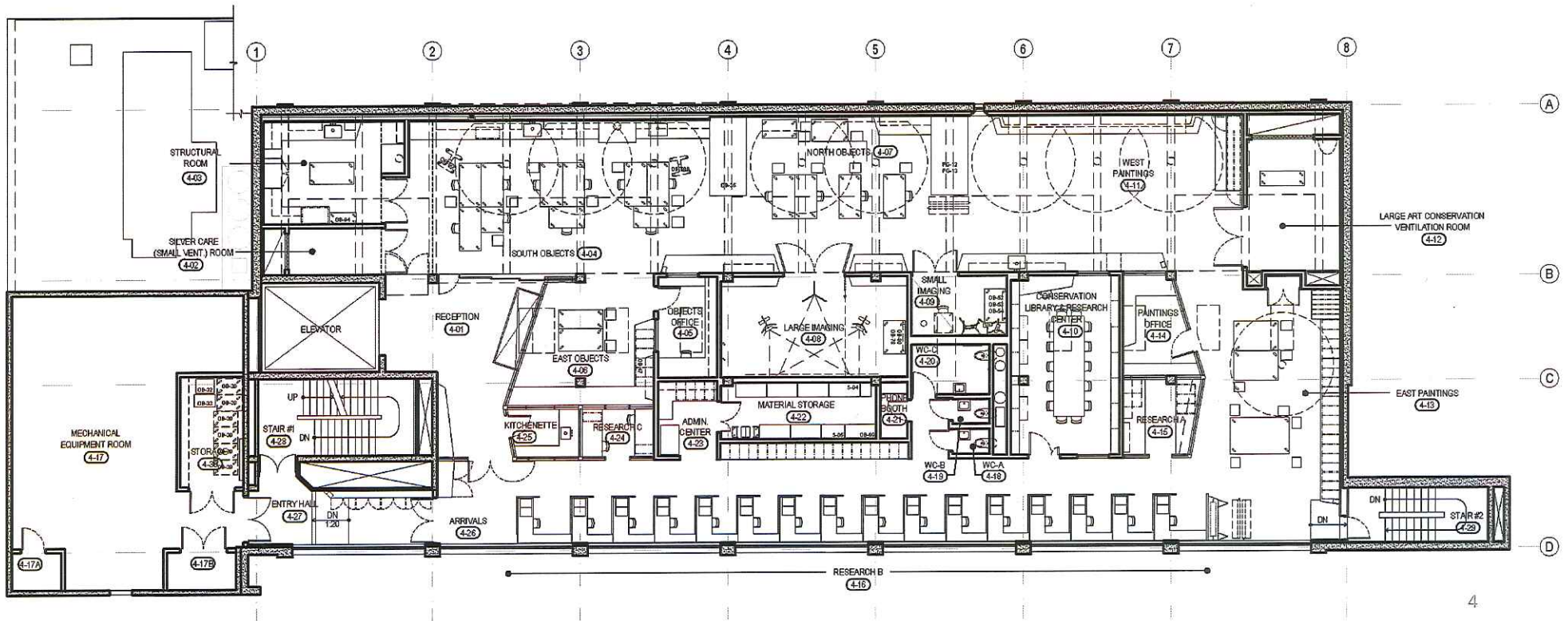
Location of Project Within Museum Building



Conservation Center Project Description

- 22,000 square foot renovation on two floors of the museum
- Six collaborative laboratories for painting, objects, frames and furniture, mountmaking, time based media and scientific research.
- Featuring upgraded technology and air-handling systems, the new Center will have open floor plans with new sawtooth skylights that maximize use of natural light and new high performance insulated windows, designed to prevent condensation in the controlled humidity environment.

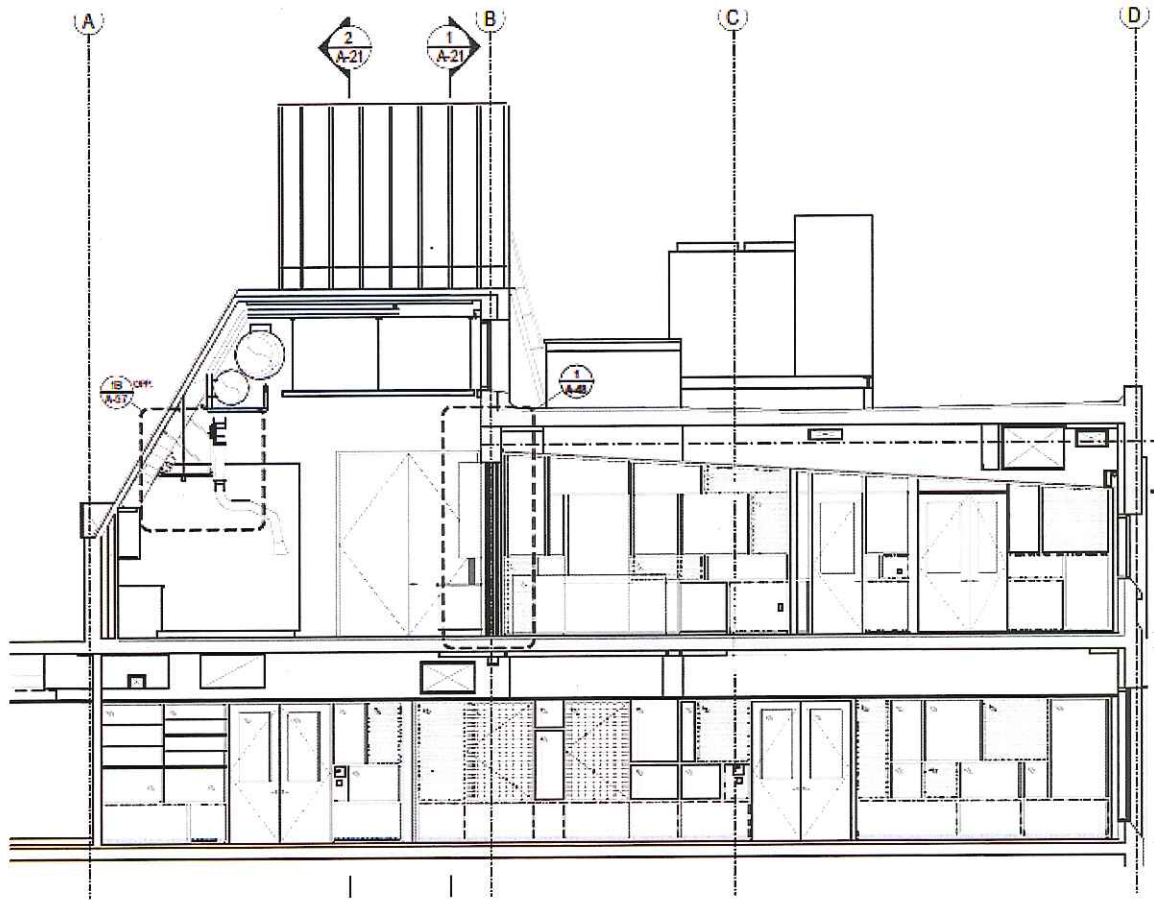
Fourth Floor Plan



Interior north/south section fourth floor sawtooth skylights



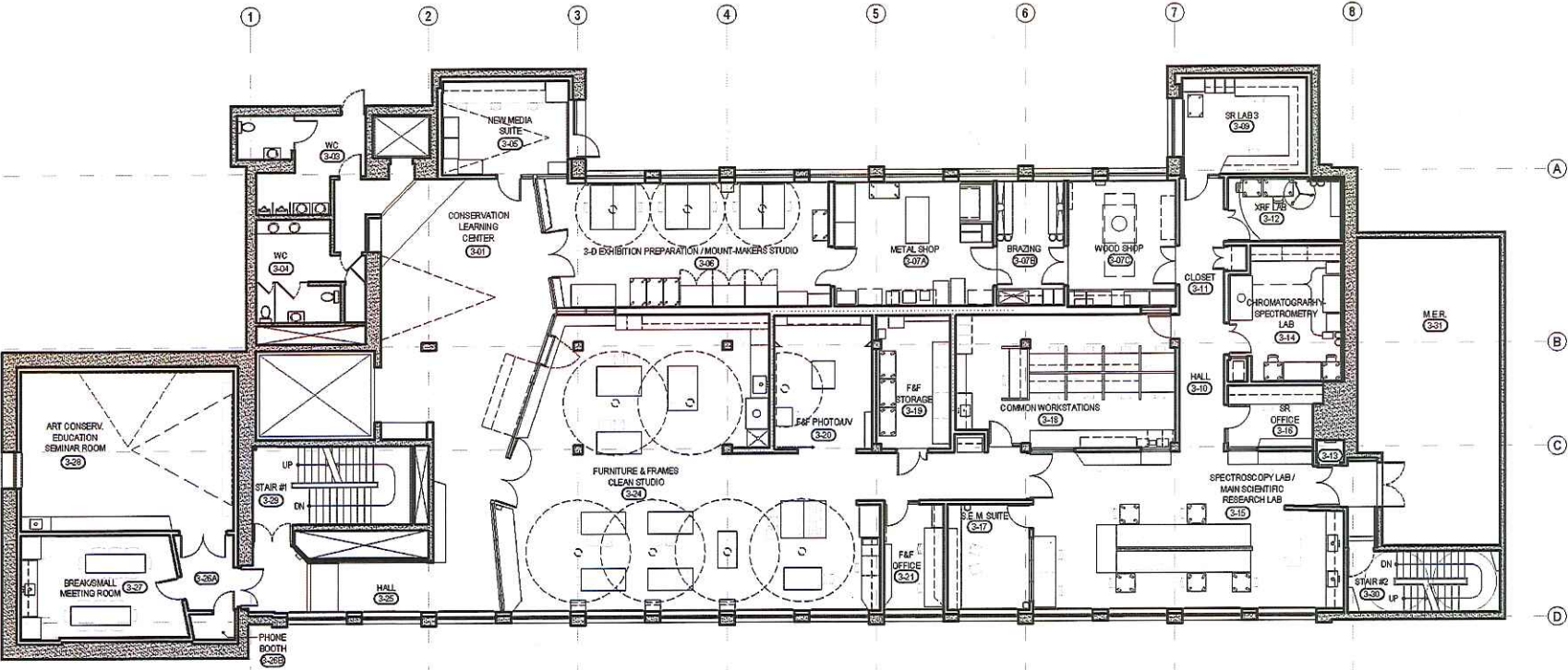
Interior East/West Section High Bay space for Painting and Objects Lab



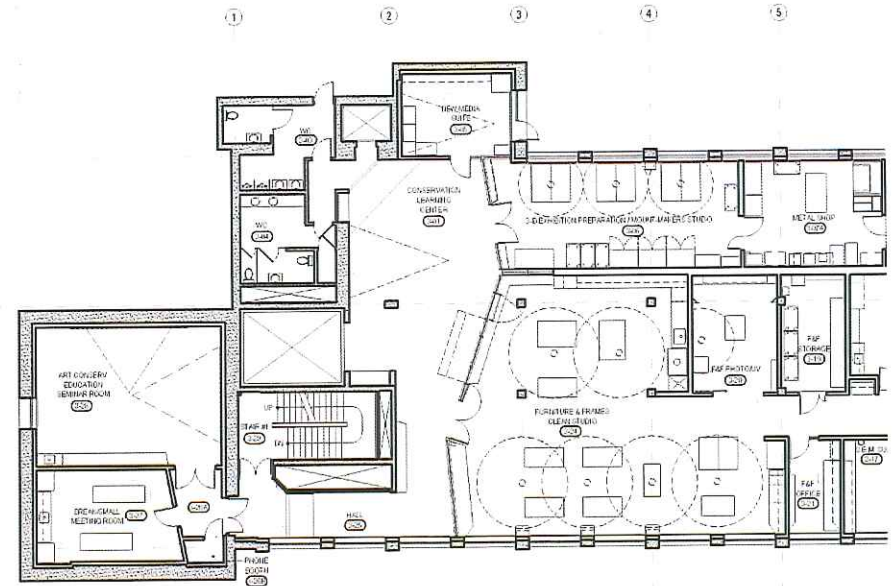
Fourth floor Painting and Objects Lab



Third Floor Plan



Third Floor Public Engagement Space

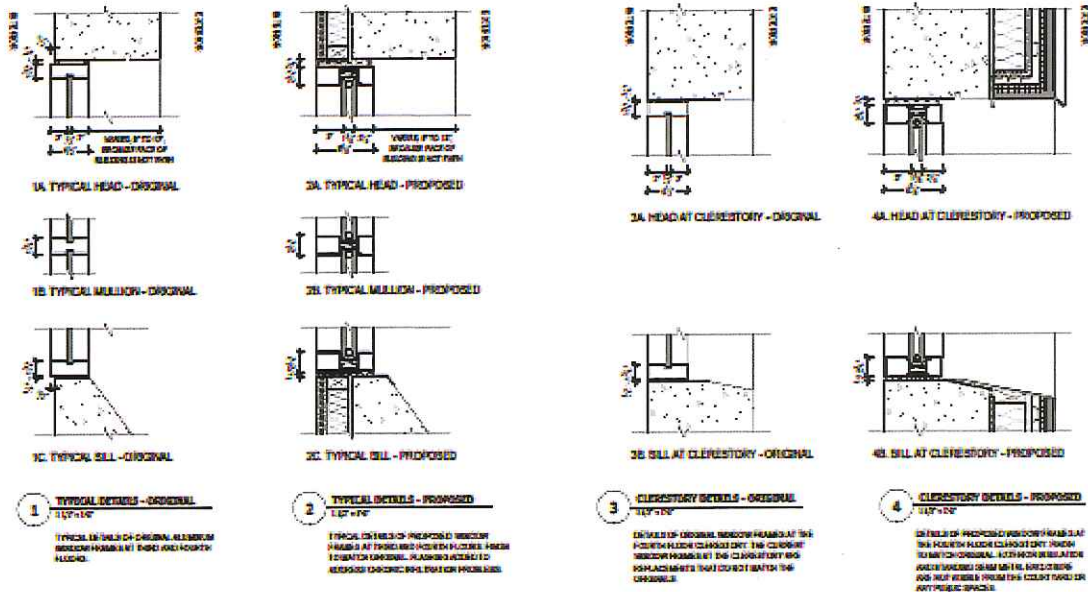


Existing Windows from the Interior courtyard



Upper 2 floors to be replaced with new thermal windows with similar profile

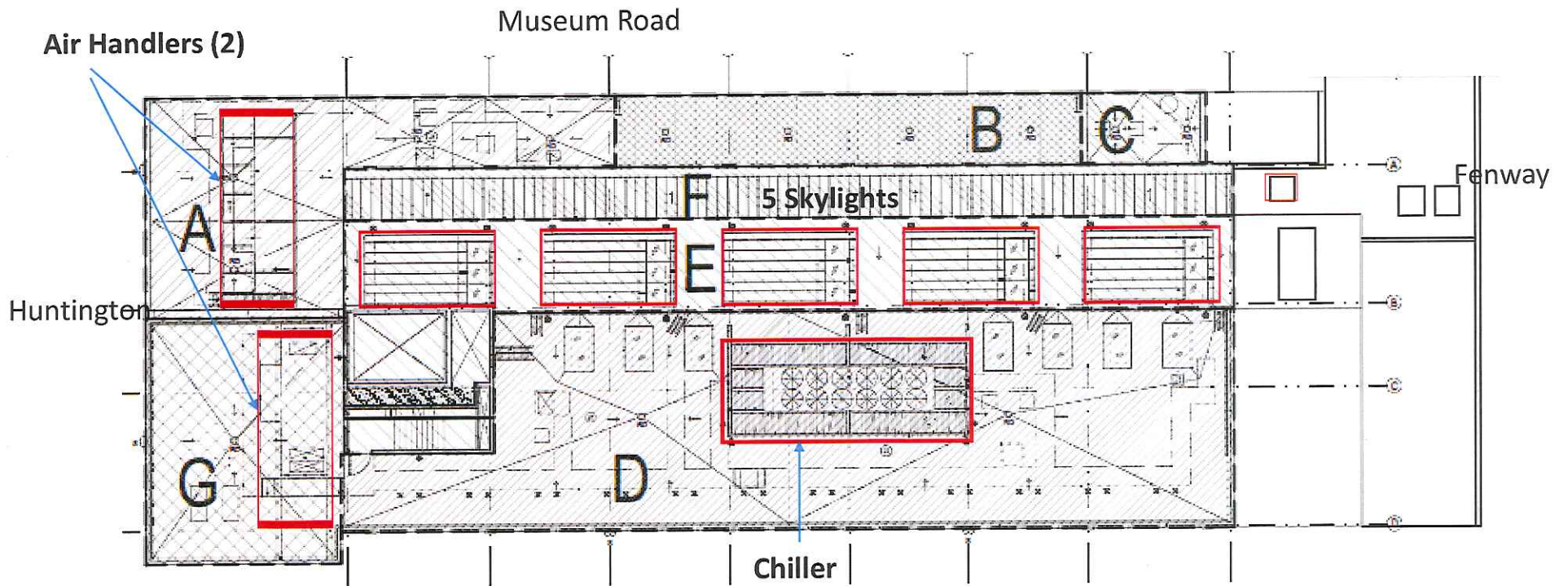
Existing and New Window Details



CAVALLI AND FRECH ARCHITECTS
 121 N. 1st Street, Suite 100, Milwaukee, WI 53202
 TEL: 414.224.1111 FAX: 414.224.1112

WHITE WING RENOVATION
 CONSERVATION CENTER
 1000 N. MILWAUKEE AVENUE, SUITE 1000
 MILWAUKEE, WI 53233

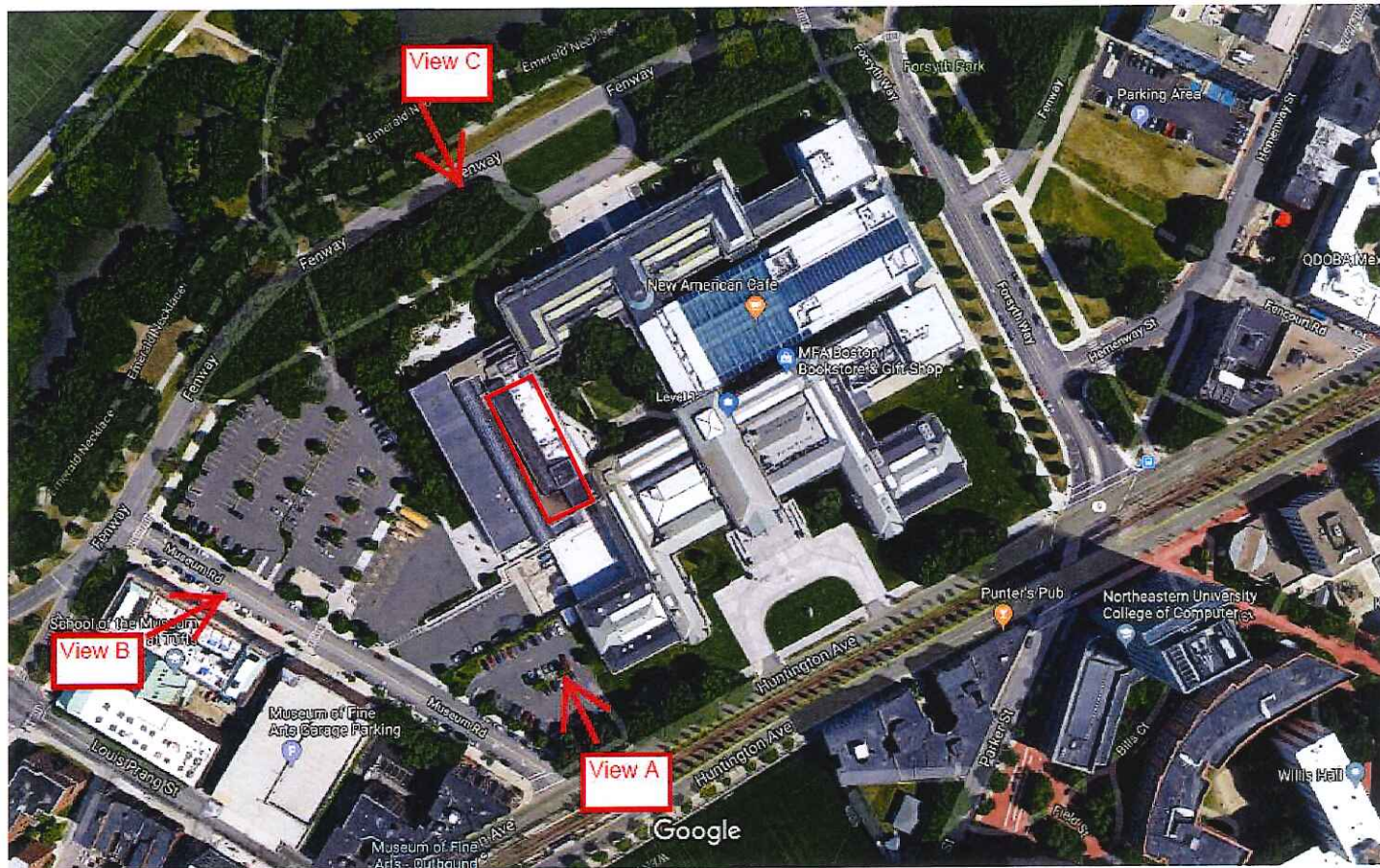
WINDOW FRAME DETAILS
 SCALE: 1/4" = 1'-0"
 DATE: 02/14/14 | DSK-73



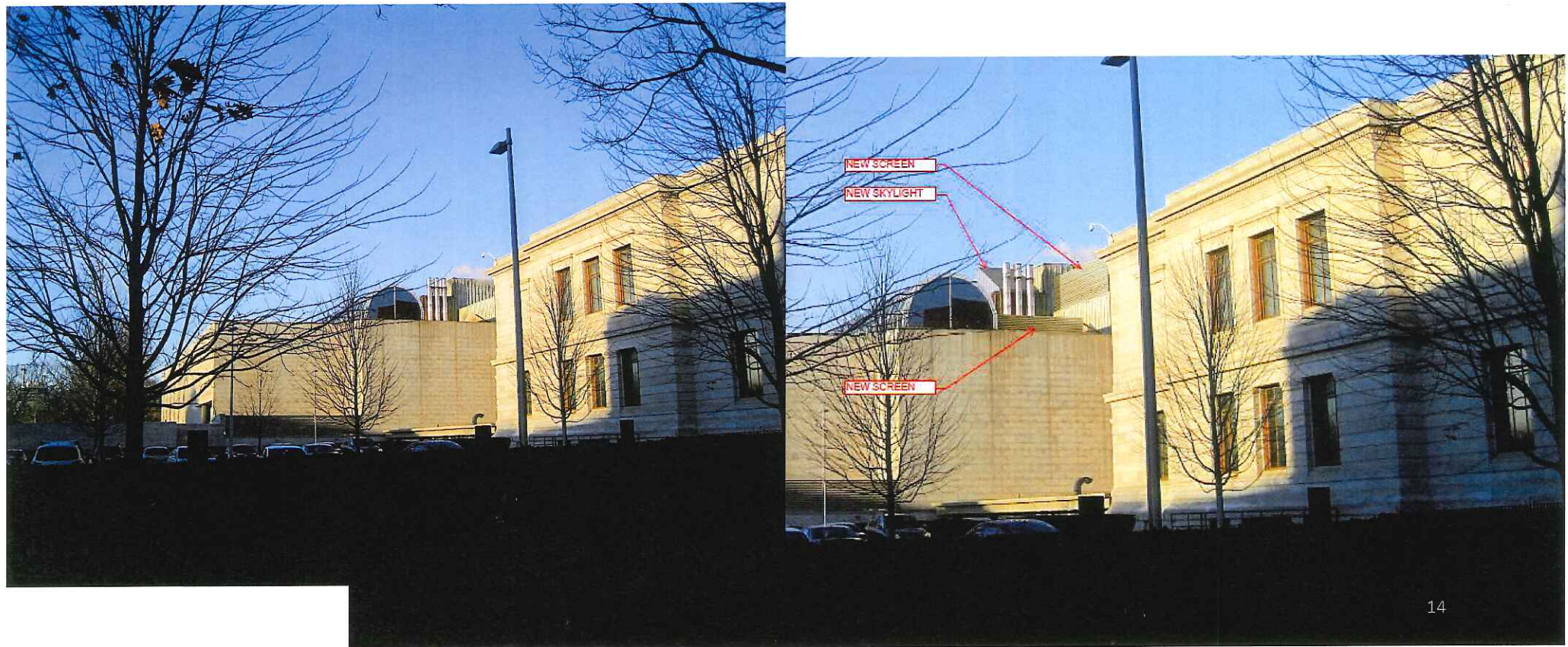
2 ROOF PLAN DIAGRAM
 1/16" = 1' - 0"

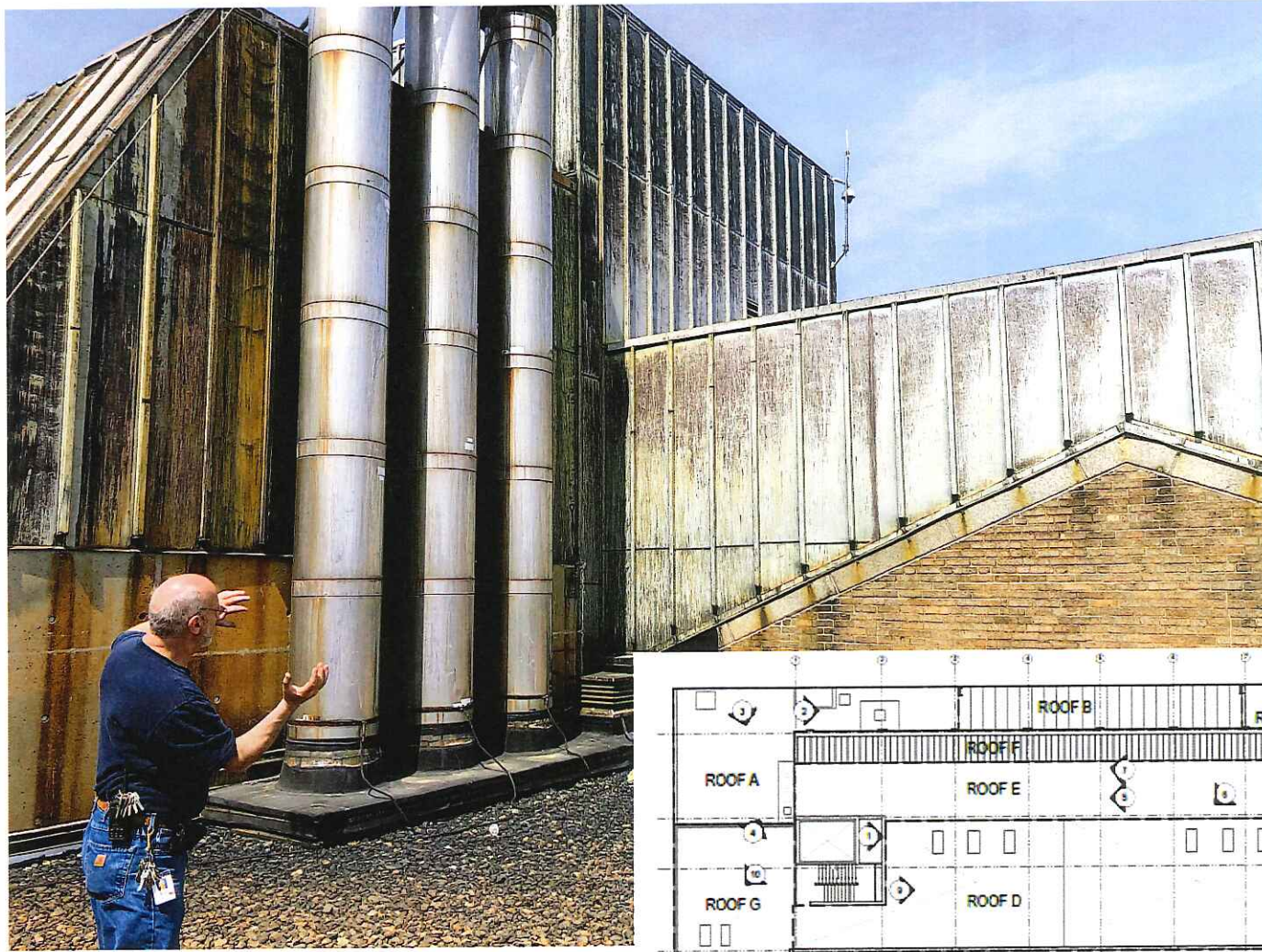
New Roof elements

Map key with views



Huntington View A – existing and proposed





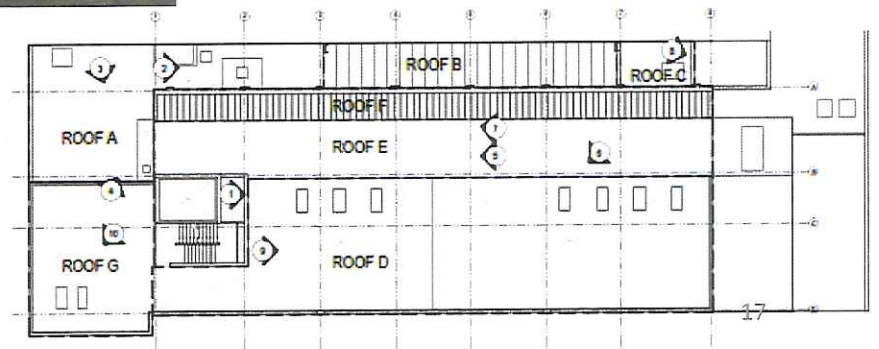
Standing on A, looking up at G

View B from Museum Road

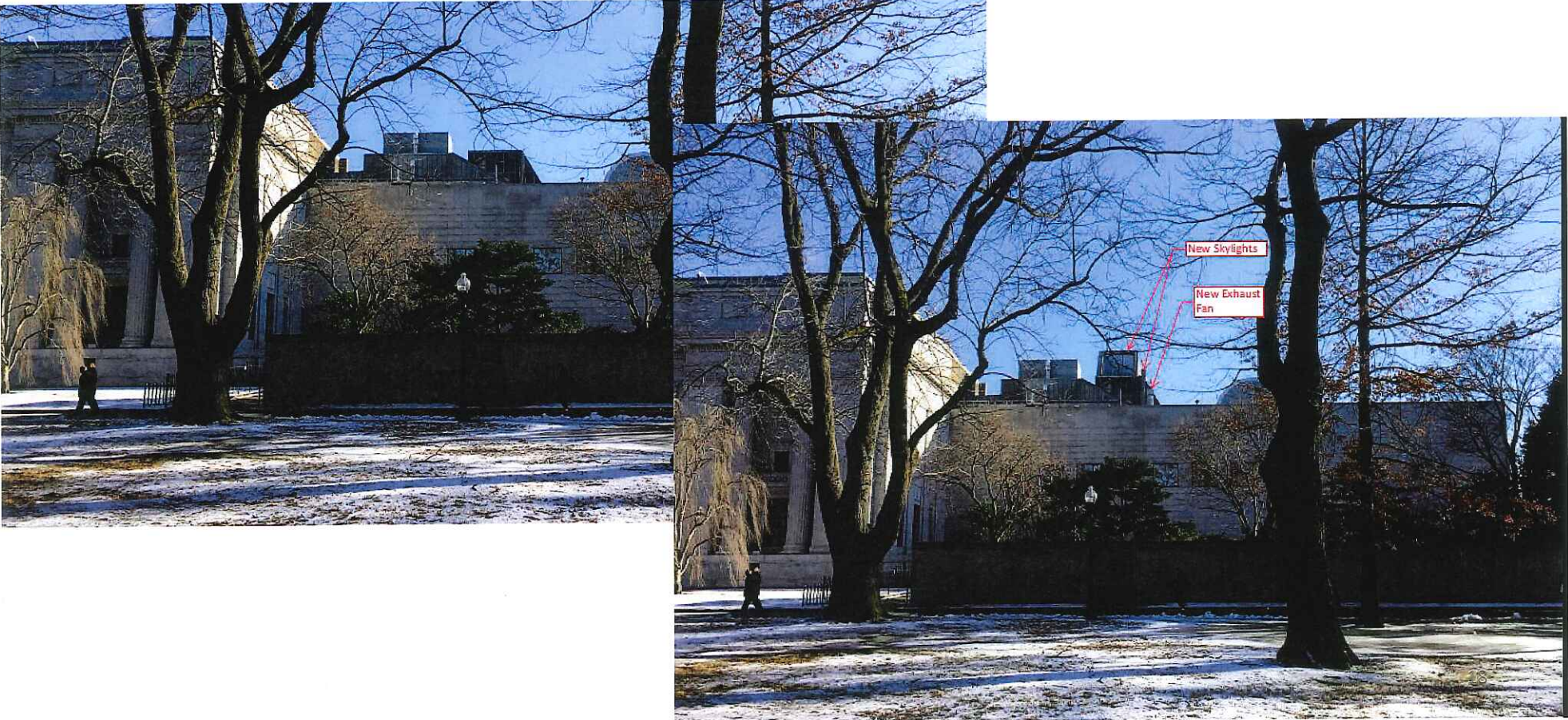




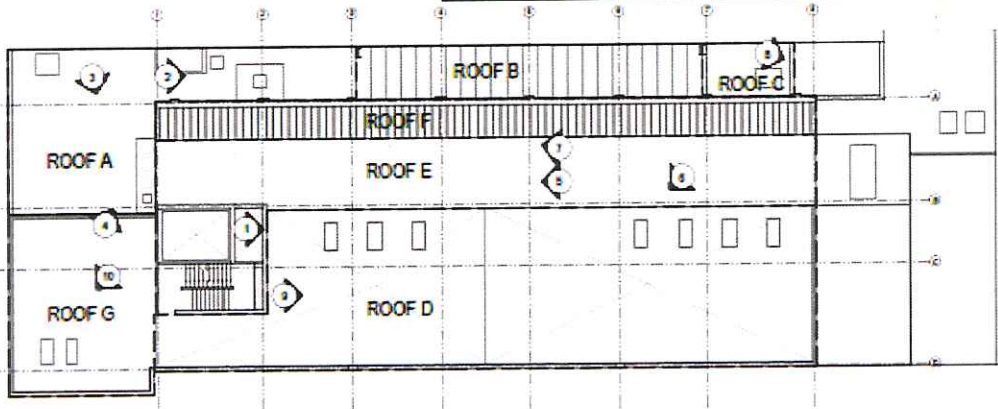
Standing on E, looking down at D, oriented toward Huntington



View C – Fenway at property line



Standing on D
looking toward
Fenway



DESIGNATIONS ON THIS SHEET REFER TO GENERAL
LOCATION AND ORIENTATION FROM WHICH EACH