

# 12-14 COMMONWEALTH AVE

BOSTON, MA

## BACK BAY ARCHITECTURAL DISTRICT COMMISSION

7/18/18



12-14 COMMONWEALTH, LLC

### SHEET LIST

- 01 SITE LOCATION
- 02 SITE CONTEXT PHOTOS
- 03 SITE CONTEXT PHOTOS
- 04 EXISTING ROOF CONDITIONS PHOTOS
- 05 EXISTING ROOF CONDITIONS PHOTOS
- 06 EXISTING ROOF CONDITIONS PHOTOS
- 07 ROOF PLAN
- 08 PROPOSED ROOF PLAN
- 09 FRONT ELEVATION
- 10 REAR ELEVATION
- 11 SIGHT LINE DIAGRAM
- 12 SIGHT LINE DIAGRAM
- 13 ROOF TOP VIEWS
- 14 ROOF TOP VIEWS
- 15 ROOF TOP VIEWS
- 16 ROOF TOP VIEWS
- 17 ROOF TOP UNITS MOCKUP
- 18 PROPOSED EQUIPMENT
- 19 PROPOSED BRICK VENT
- 20 PROPOSED COLORS
- 21 PROPOSED MECHANICAL SCREENING

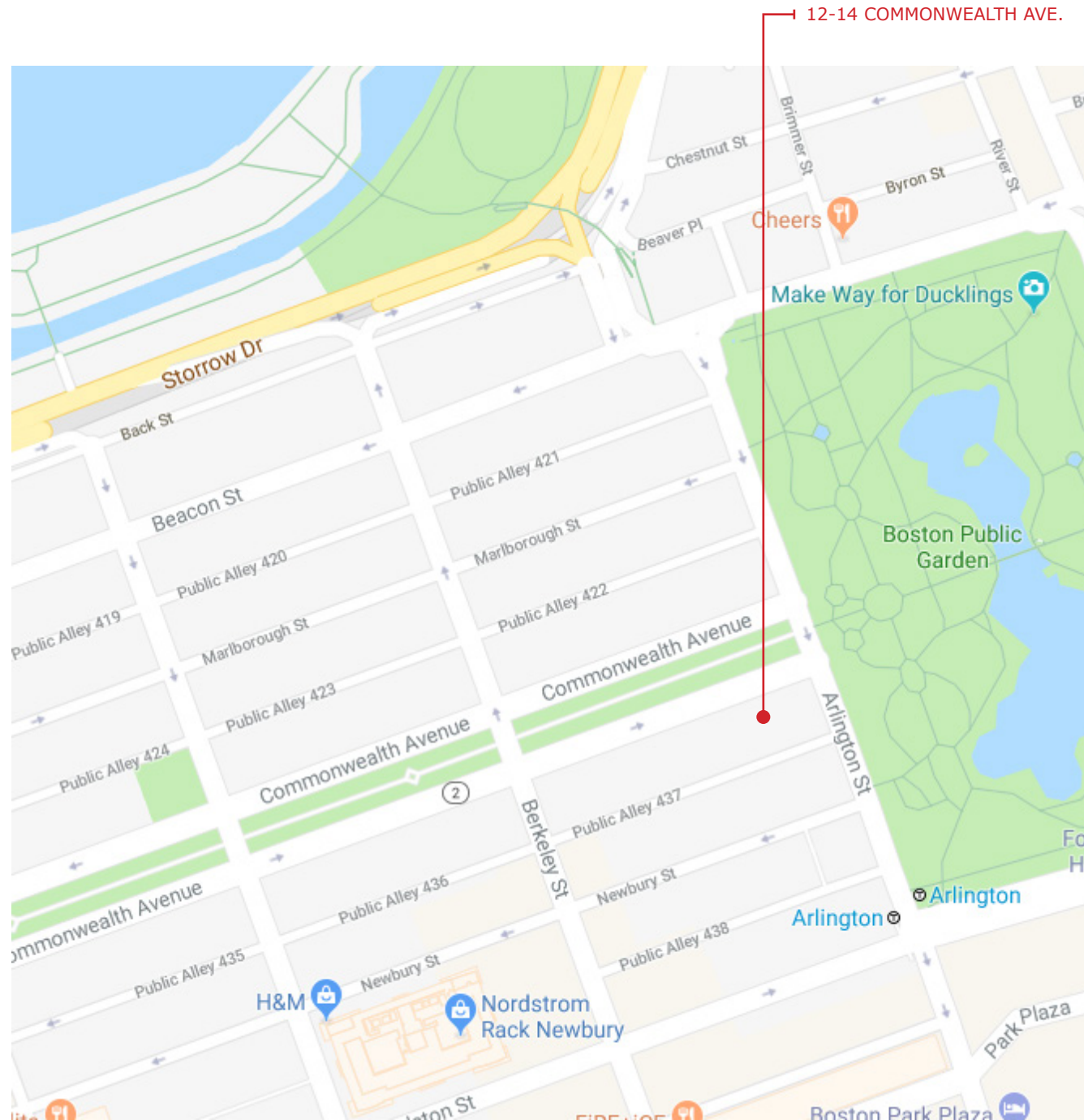
**Akelius**

DATE: 8/01/18

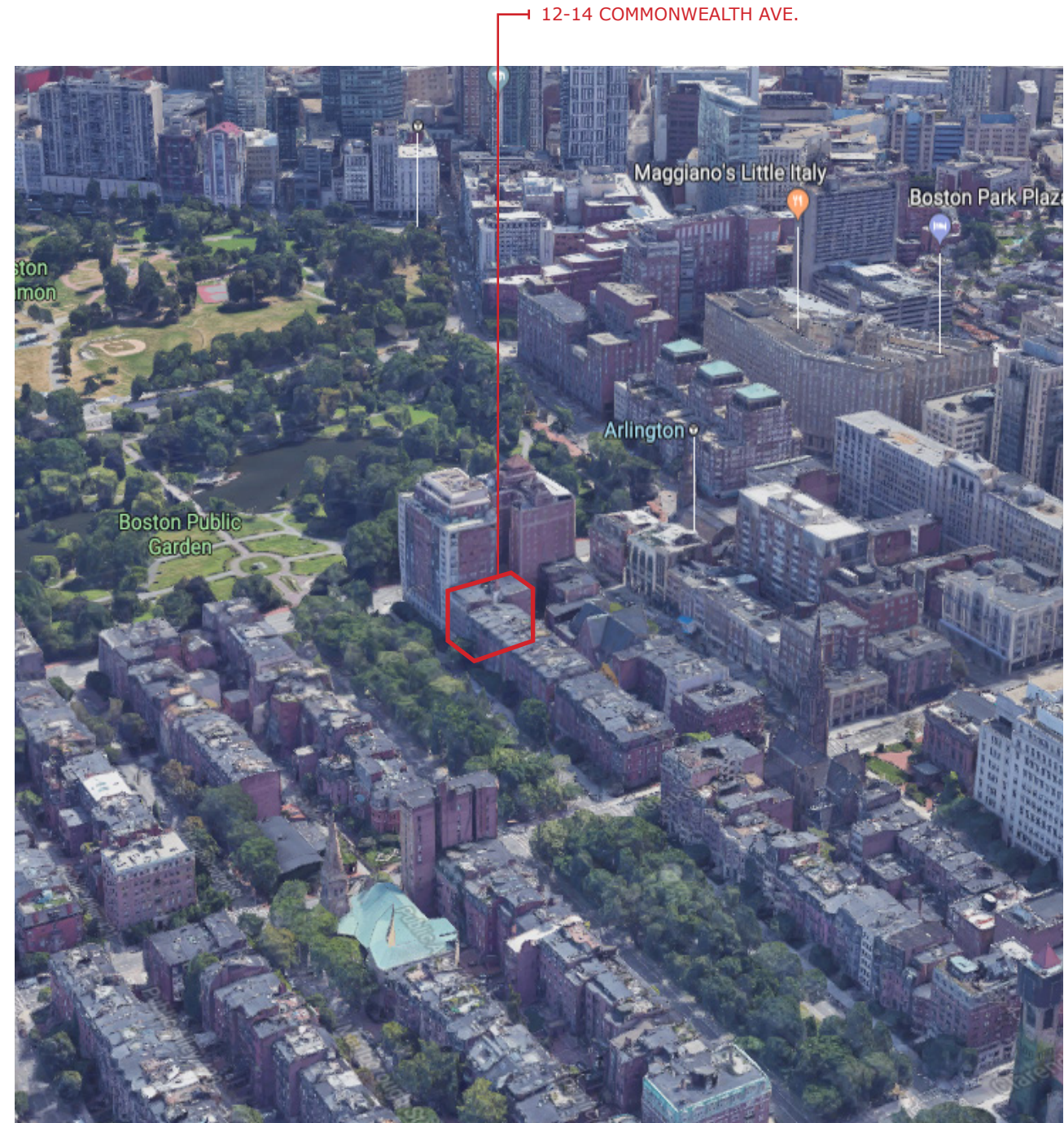
ADDRESS: 3 P.O. SQ Suite 400  
Boston, MA 02109

SUBMISSION DATE: 7/18/18

REVISE DATE: 8/01/18



AERIAL



BIRD'S EYE



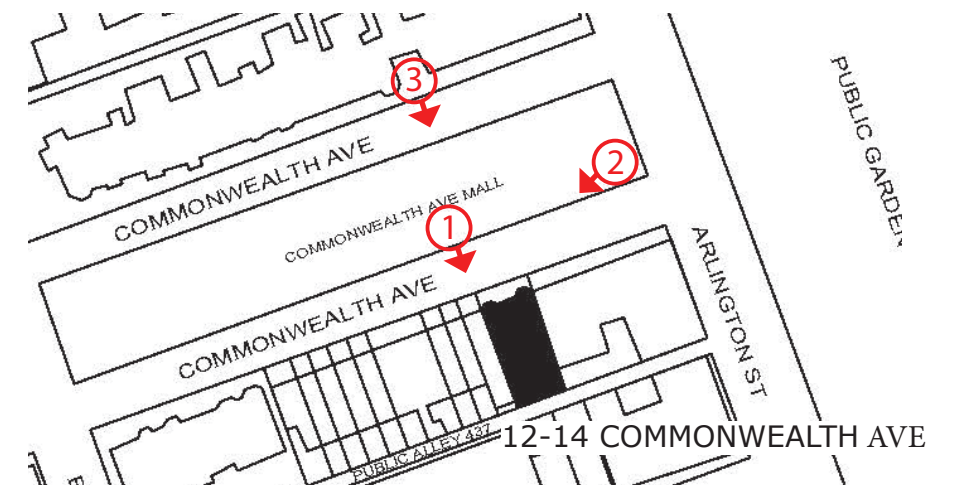
1. COMMONWEALTH MALL



2. CORNER OF COMMONWEALTH & ARLINGTON



3. ACROSS COMMONWEALTH MALL



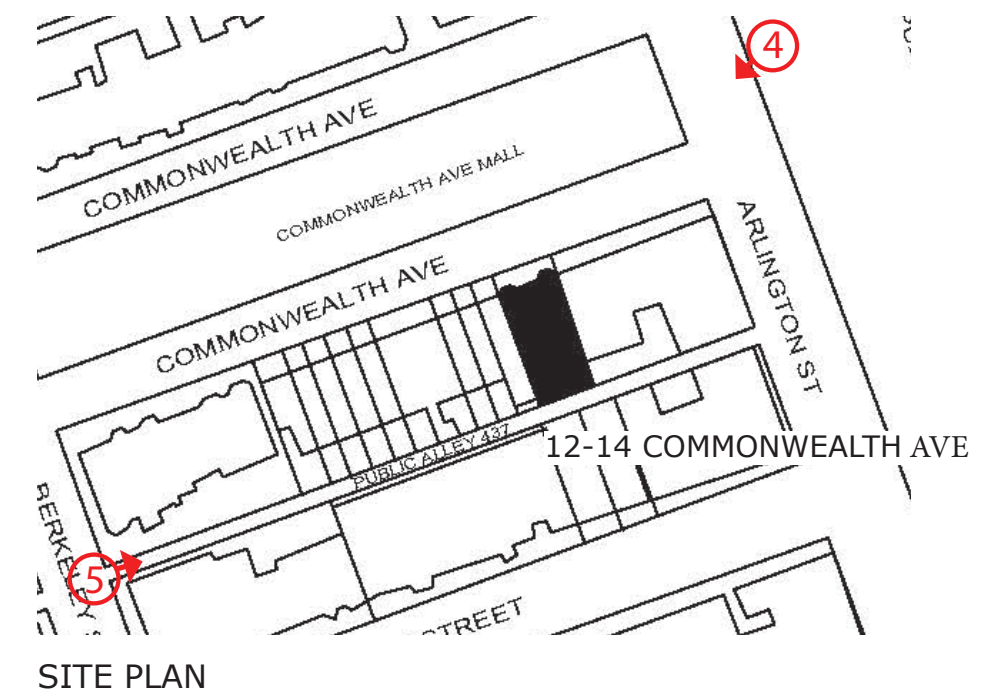
SITE PLAN



4. ENTRY TO PUBLIC GARDEN



5. PUBLIC ALLEY & BERKELEY ST.

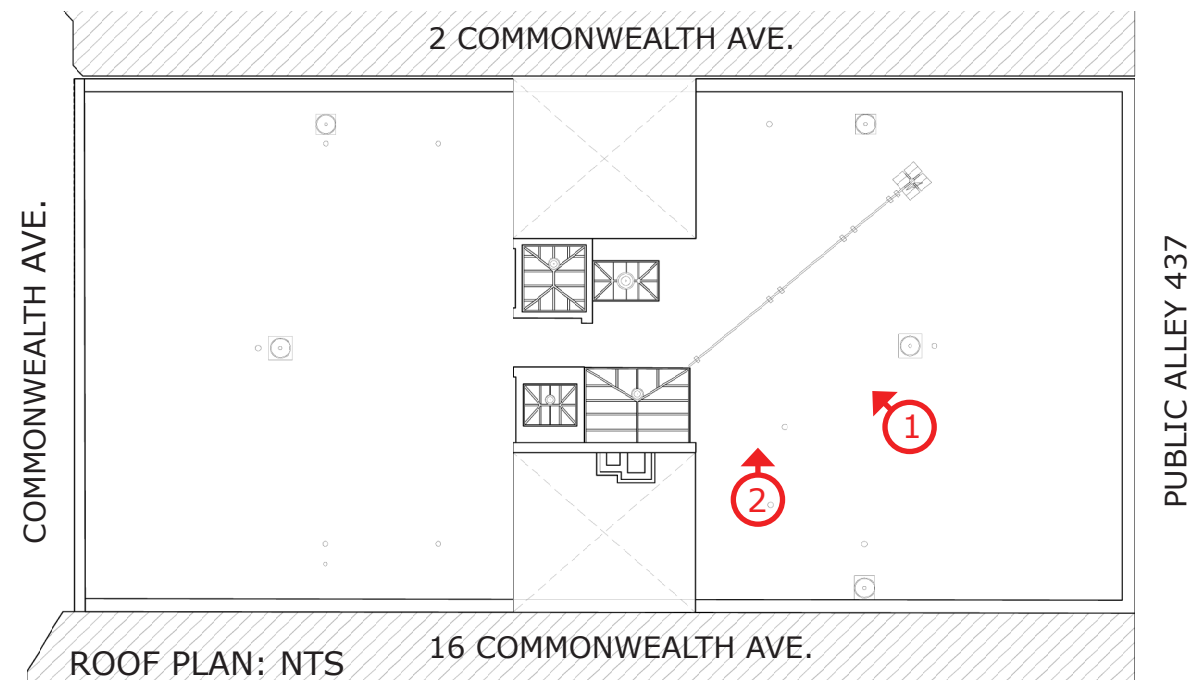




1. NORTHEAST ROOF TOP VIEW



2. EAST ROOF TOP VIEW

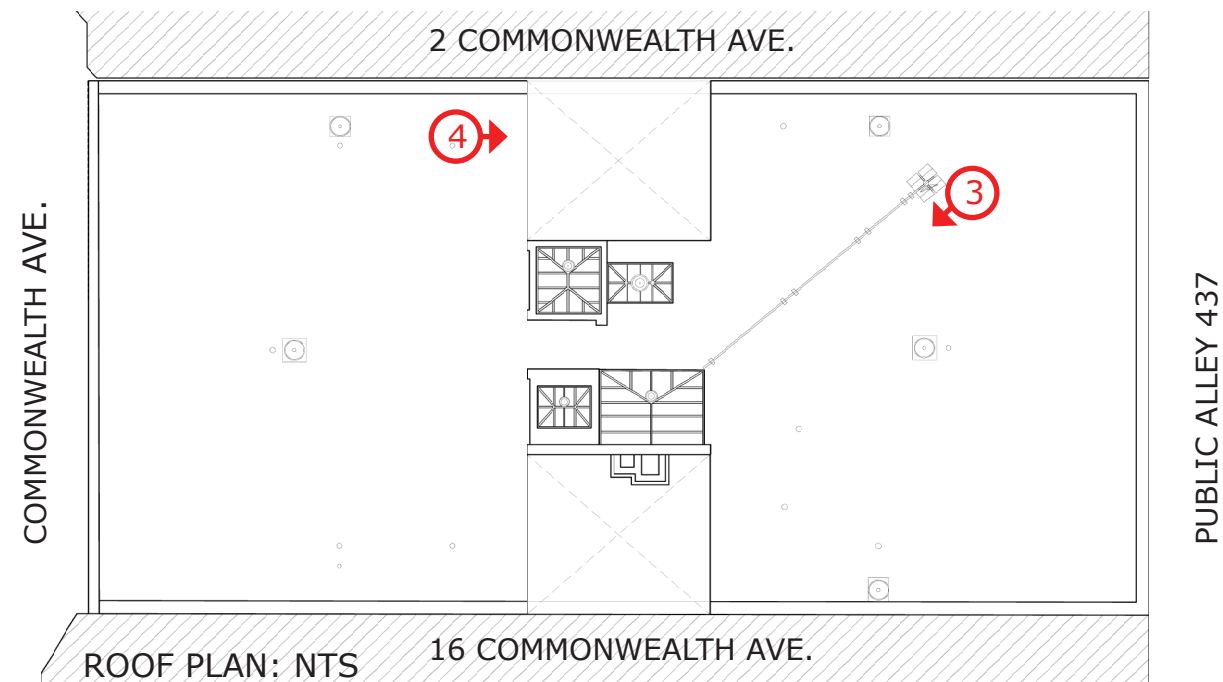




3. NORTHWEST ROOF TOP VIEW



4. SOUTH ROOF TOP VIEW





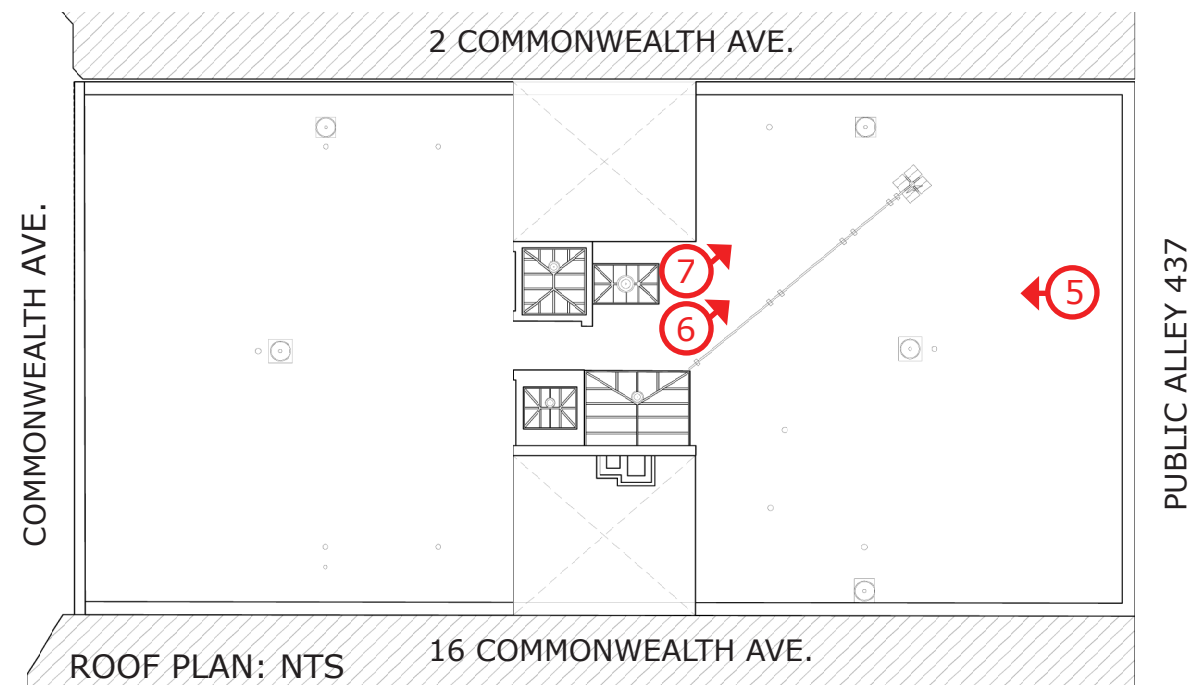
5. NORTH ROOF TOP VIEW

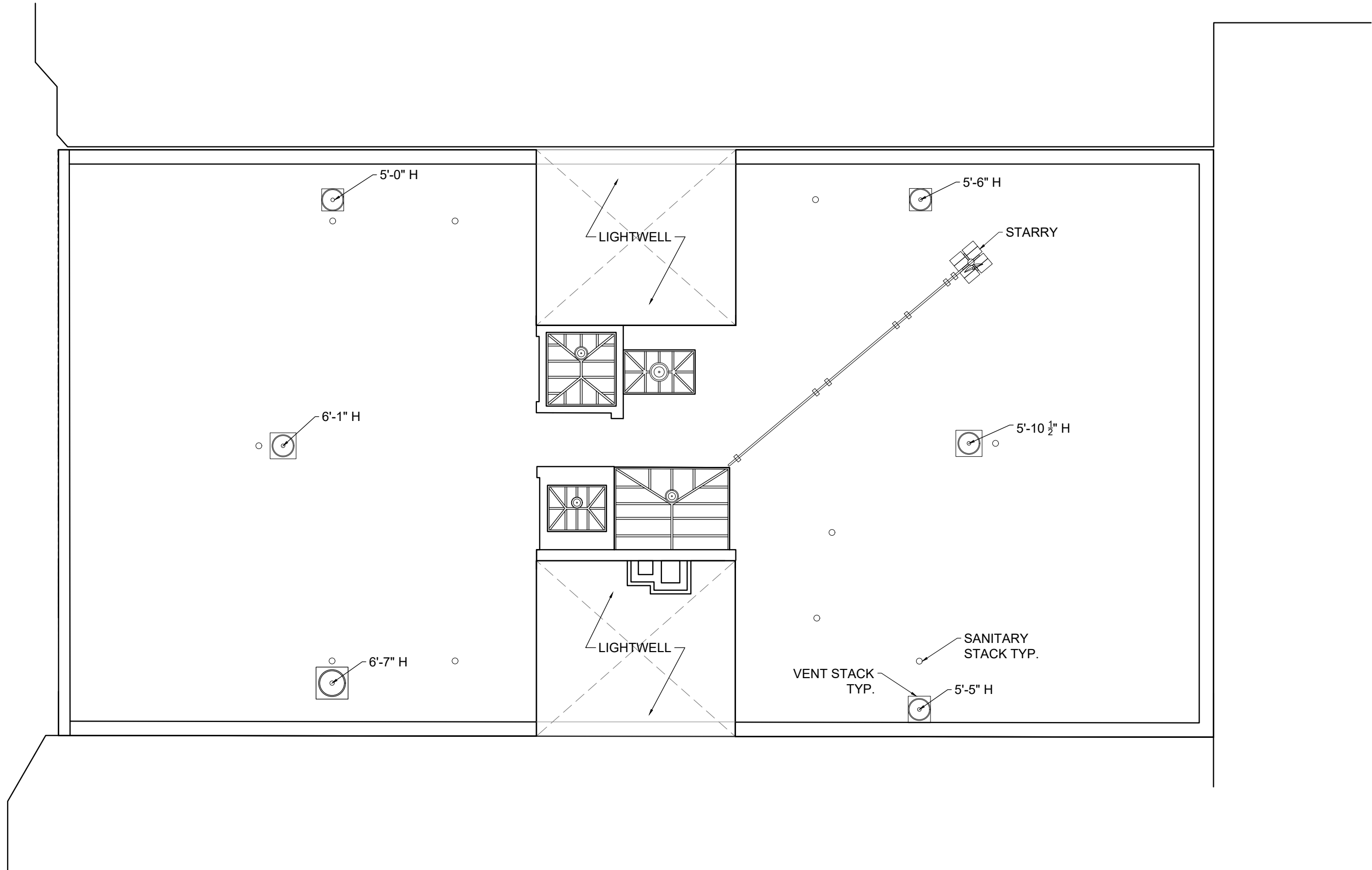


7. SOUTHEAST VIEW

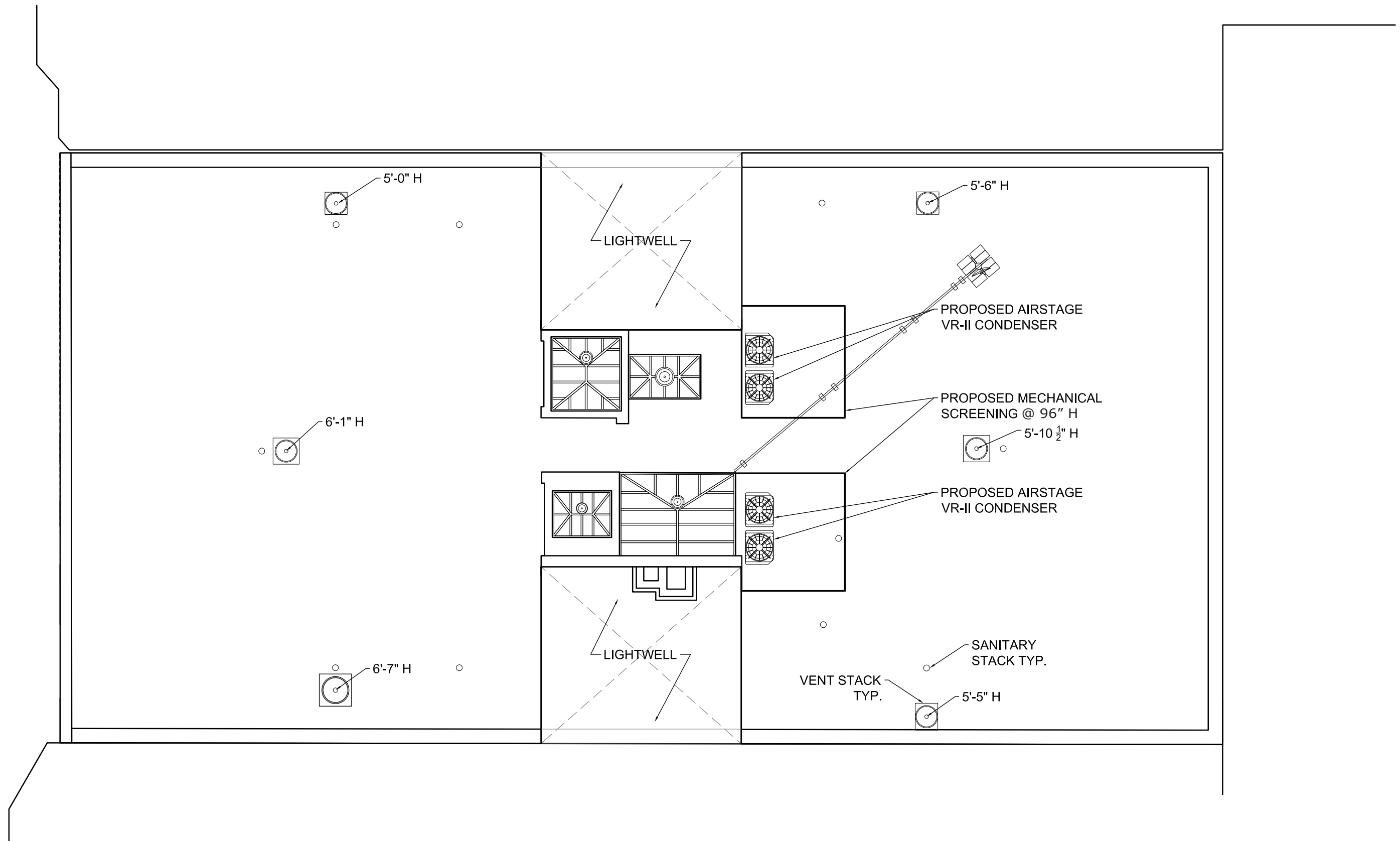


6. SOUTHEAST ROOF TOP VIEW



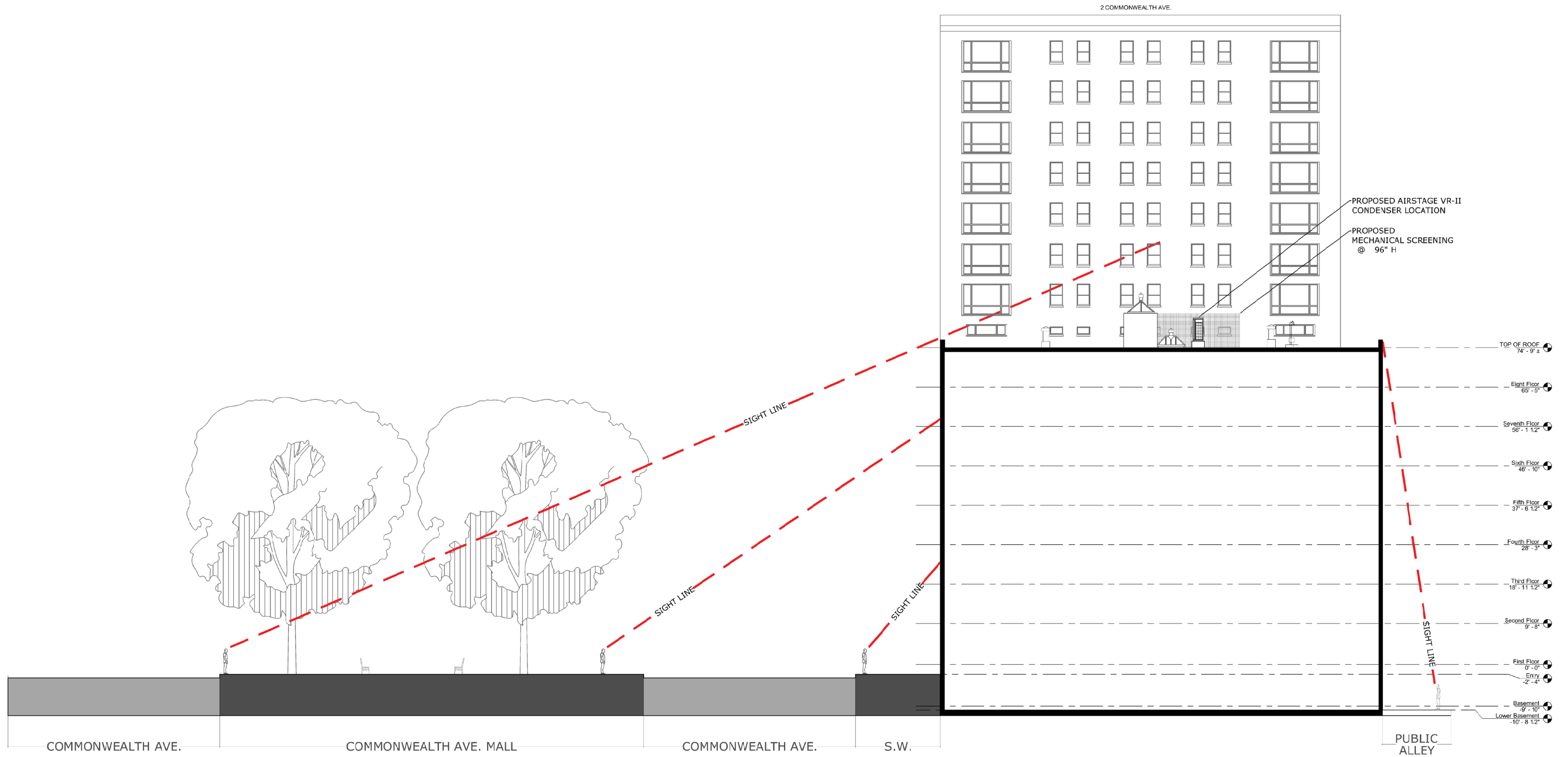


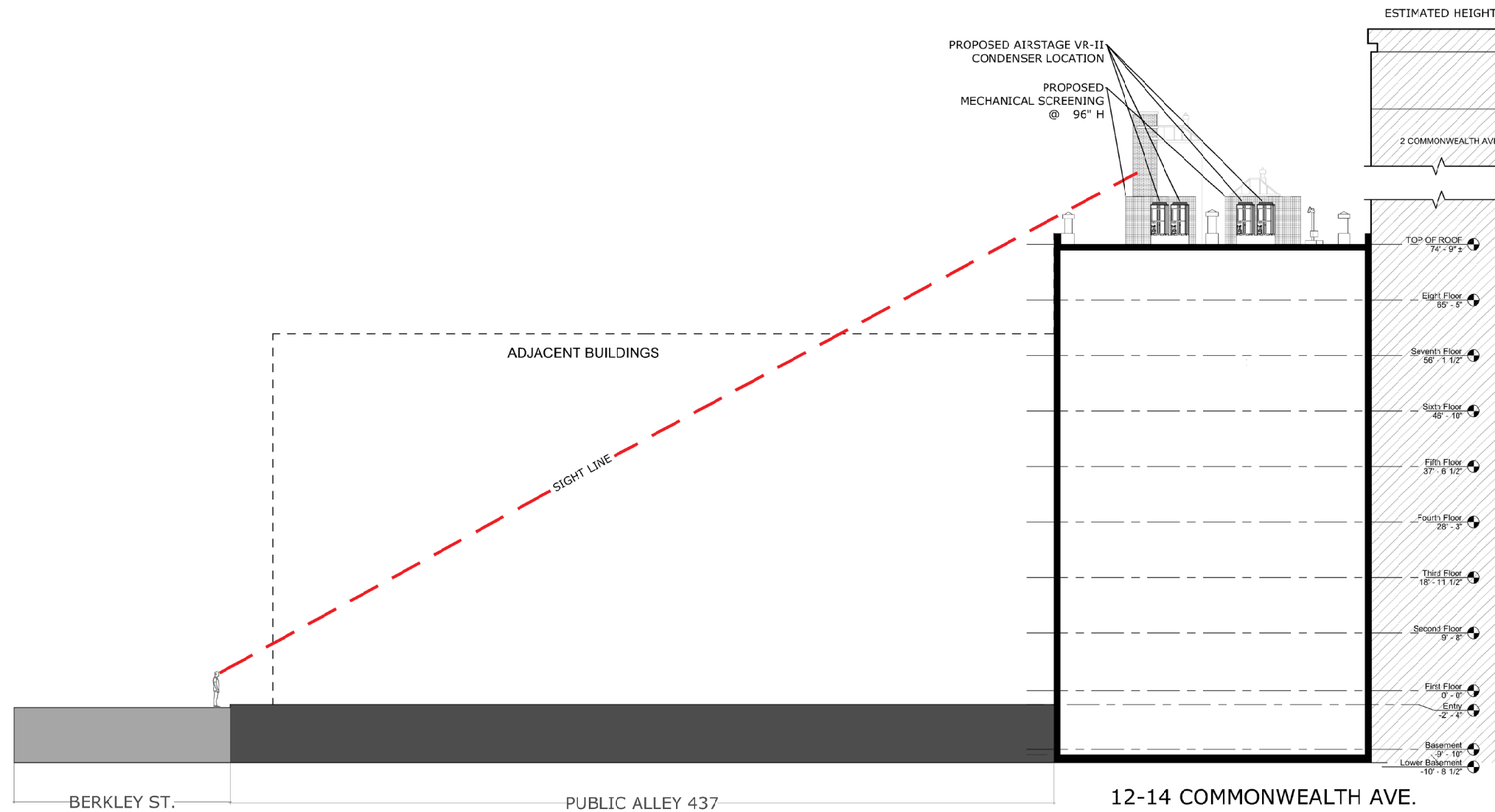














HVAC EQUIPMENT AT ADJACENT BUILDING



VIEW FROM 2ND FLOOR OF 12 COMMONWEALTH AVE. ACROSS ALLEY



VIEW FROM 2ND FLOOR OF 12 COMMONWEALTH AVE. ACROSS ALLEY



VIEW FROM 2ND FLOOR OF 12 COMMONWEALTH AVE. ACROSS ALLEY

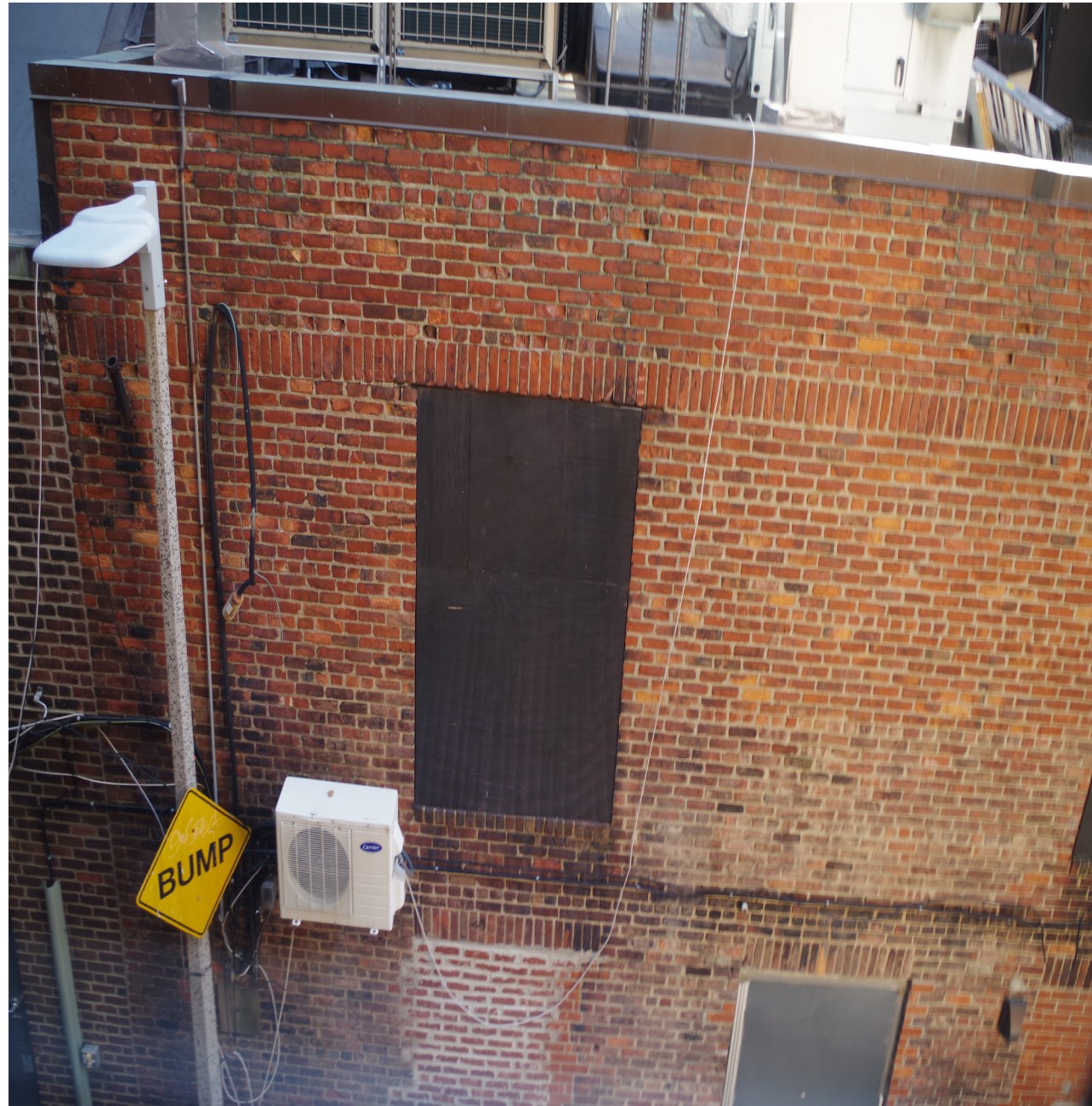


VIEW FROM 3RD FLOOR OF 12 COMMONWEALTH AVE. ACROSS ALLEY



VIEW FROM 3RD FLOOR OF 12 COMMONWEALTH AVE. ACROSS ALLEY





VIEW FROM 3RD FLOOR OF 12 COMMONWEALTH AVE. ACROSS ALLEY



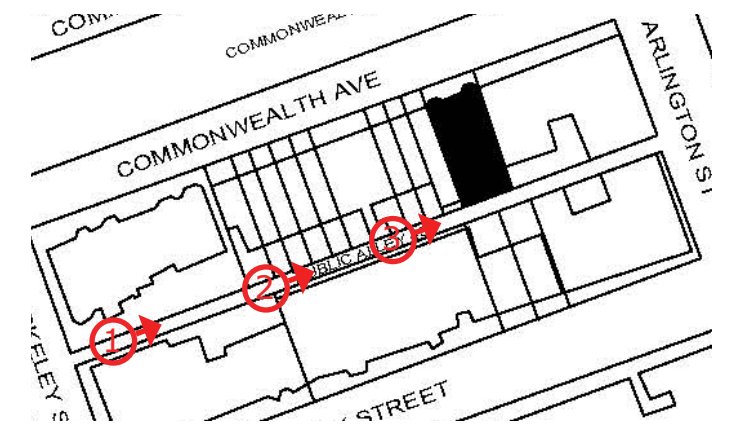
1



2



3



**8 Ton Heat Recovery Outdoor Unit - 208 / 230 VAC, 3-Phase, 60Hz  
1X (AOUA96TLBV)**

<b>Job Name</b> _____	<b>Date</b> _____
<b>Location</b> _____	<b>Approval</b> _____
<b>Engineer</b> _____	<b>Construction</b> _____
<b>Submitted To</b> _____	<b>Unit No</b> _____
<b>Submitted By</b> _____	<b>Drawing No</b> _____
<b>Reference</b> _____	

- Inverter driven compressor
- New style high power DC fan motor.
- Blue fin heat-exchanger
- 10 Year warranty on parts and compressor. See Warranty Statement for details.



<b>SYSTEM CAPACITY</b>	
Nominal Tonnage - Ton(s)	8
Maximum Connectable Indoor Units	16
Indoor Unit Total Capacity	50% to 150%
Unit Group	1X (AOUA96TLBV)

<b>OPERATING TEMPERATURES</b>	
Operating Temp. Cooling (DB) - °F [°C]	14 to 115 [-10 to 46]
Operating Temp. Heating (DB) - °F [°C]	-4 to 70 [-20 to 21]
Operating Temp. Cooling/Heating Simultaneous - °F [°C]	14 to 70 [-10 to 21]

<b>ELECTRICAL</b>	
Electrical Power Requirements	208 / 230 VAC, 3-Phase, 60Hz
Voltage Range	187 to 253 VAC
Maximum Circuit Breaker - A	50
Minimum Circuit Ampacity (MCA) - A	41
Cooling Power Input - kW	7.56
Heating Power Input - kW	7.82
Maximum Starting Current (MSC) - A	33.2

<b>EFFICIENCY</b>	
EER Cooling (Ducted/Non Ducted)	11.70/11.30
IEER Cooling (Ducted/Non Ducted)	23.60/20.20
COP / High Heating 47°F	3.72/3.60
SCHE (Ducted/Non Ducted)	26.50/25.50

<b>CAPACITY</b>	
Nominal Cooling Capacity - BTU/h [kW]	96,000 [28.1]
Nominal Heating Capacity - BTU/h [kW]	108,000 [31.7]

<b>PIPING</b>	
Max. Total Refrigerant Line Length - ft [m]	3280 [1000]
PipeConnection:Max Height Diff. (ODU & ID)(Upper/Lower) - ft [m]	164/131 [50/40]
Pipe Connection Method: Liquid/Gas	Brazed
Pipe Connection: Liquid - in [mm]	1/2 [12.70]
Pipe Connection: Discharge Gas - in [mm]	3/4 [19.05]
Pipe Connection: Suction Gas - in [mm]	7/8 [22.22]

<b>COMPRESSOR</b>	
Compressor Type	Rotary Inverter
Refrigerant Type	R410A
Refrigerant Charge - lbs [kg]	26.01 [11.80]
Compressor Crankcase Heater - W	2X 35
Refrigerant Oil / Lubricant	POE
Compressor Capacity Control - Steps/Range	951 / 20 - 115
Compressor RLA - Rated Load Amperage - Amps	25

<b>SOUND</b>	
Sound Pressure Levels (Cooling/Heating) - dB	59/59

<b>FAN</b>	
Fan Type	Propeller fan
Fan Airflow Rate - CFM [m3/h]	6533 [11100]
Fan Power Output - W	740
Fan Motor - Full Load Amperage (FLA) - A	3.0
External Static Pressure (Max) - in.WG [Pa]	0.32 [80]

<b>WEIGHT</b>	
Net Weight - lbs [kg]	597 [271]
Gross Weight - lbs [kg]	642 [291]

<b>HEAT EXCHANGER</b>	
H. E. Pipe Type (Material)	Grooved H-pin (Copper)
H. E. Fin Tube (Material)	Corrugate (Aluminum)
H. E. Fin Surface Treatment	Corrosion resistance (Blue fin)
H. E. Fin Pitch - FPI [mm]	18 [1.45]
H. E. Rows x Stages	3 x 60
H. E. Face Area - ft² [m²]	23 [2.2]

<b>DIMENSIONS</b>	
Dim.Net (HxWxD) - in [mm]	66-9/16 x 36-5/8 x 30-1/8 [1690 x 930 x 765]
Dim.Gross (HxWxD) - in [mm]	71-5/16 x 39-7/16 x 33-3/8 [1811 x 1002 x 847]

<b>CODE</b>	
ETL	3170288
AHRI Certified	Standard 1230

H. E. Length - in [mm] 69-5/16 [1760]

Note: Specifications are based on the following conditions:  
Cooling: Indoor temperature of 80°F (26.7°C) DB/67°F (19.4°C) WB, and outdoor temperature of 95°F (35°C) DB/75°F (23.9°C) WB.  
Heating: Indoor temperature of 70°F (21.1°C) DB/60°F (15.6°C) WB, and outdoor temperature of 47°F (8.3°C) DB/43°F (6.1°C) WB.  
Pipe length: 25ft. (7.5m), Height difference: 0ft. (0m) (Outdoor unit - indoor unit).

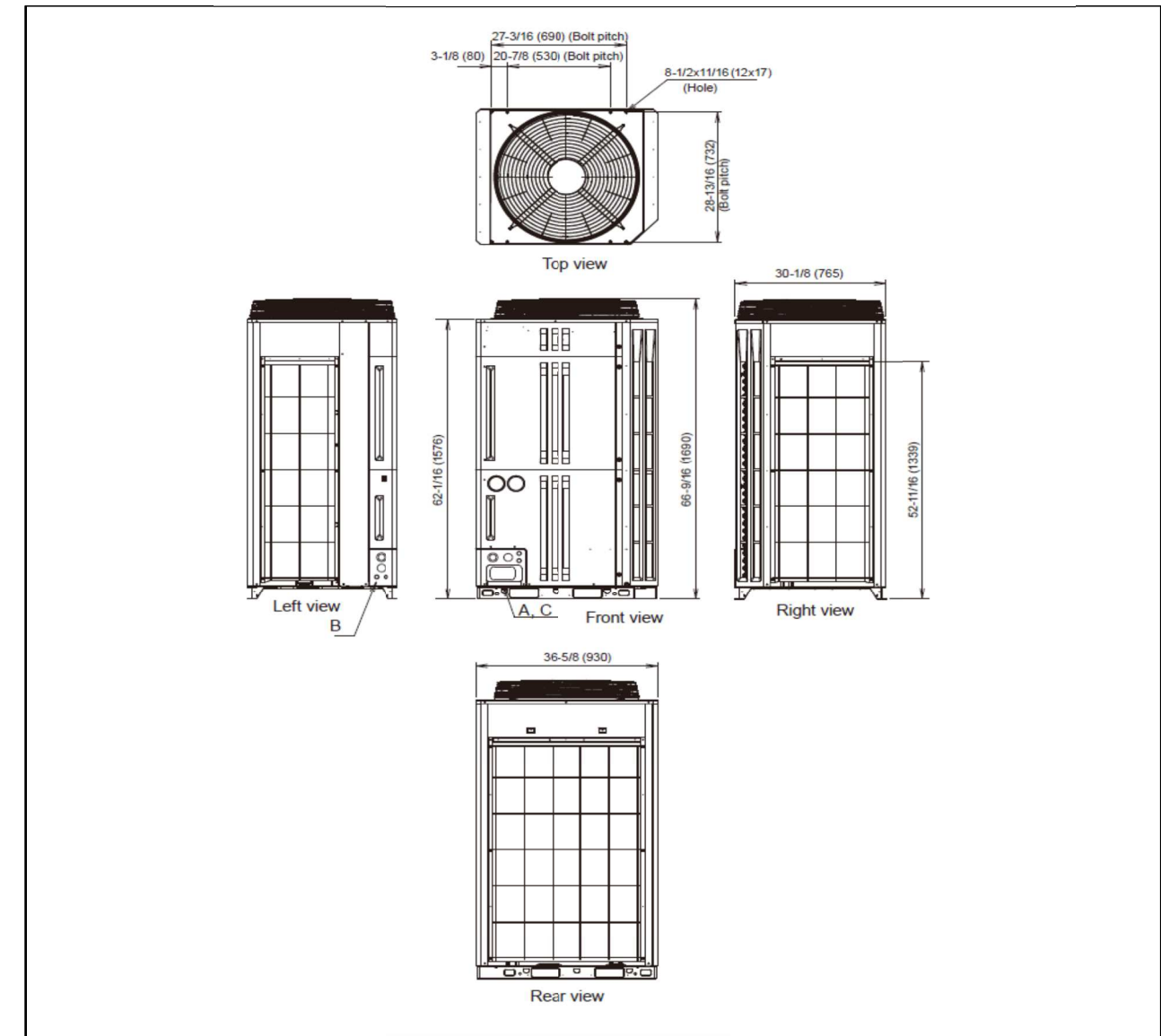


Fujitsu general America, Inc.  
353 Route 46 West  
Fairfield, NJ 07004  
Toll Free: (888) 888-3424  
Fax: (973) 836-0453  
www.airstagevr.com

**8 Ton Heat Recovery Outdoor Unit - 208 / 230 VAC, 3-Phase, 60Hz  
1X (AOUA96TLBV)**

**DIMENSIONS**

Unit: In. (mm)



# MODEL BV40

4" Deep • 45° Blades • Extruded Aluminum Brick Vent

## STANDARD MATERIALS AND CONSTRUCTION

**FRAME:** .125 thick extruded aluminum alloy

**BLADE:** .125 thick extruded aluminum alloy

**SCREEN:** 18x16 Aluminum mesh insect screen

**FINISH:** Clear anodized

## OPTIONS

Finish - Baked Powder Polyester, or Fluoropon

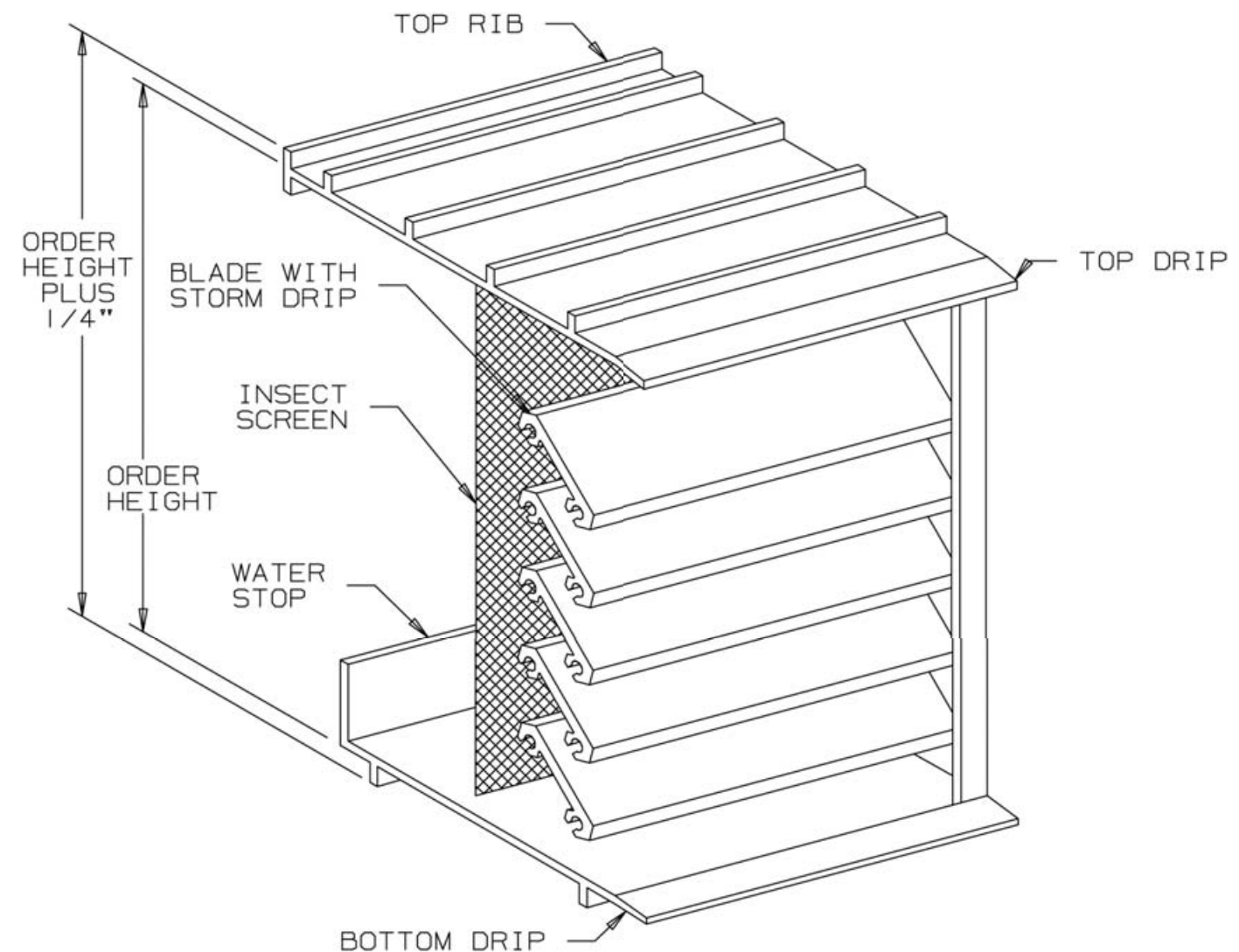
## NOTES

1. "A" width and "B" height are opening dimensions.
2. Shipping weight approximately 6.0 lbs./sq.ft.

## STOCK SIZES

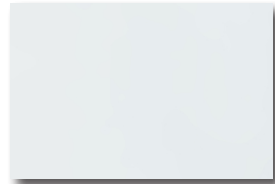
No.	Body Size	Free Area (sq.in.)
133	8 <sup>1</sup> / <sub>8</sub> "W x 2 <sup>3</sup> / <sub>8</sub> "H	5.47
135	8 <sup>1</sup> / <sub>8</sub> "W x 4 <sup>3</sup> / <sub>4</sub> "H	9.93
140	8 <sup>1</sup> / <sub>8</sub> "W x 7 <sup>3</sup> / <sub>4</sub> "H	20.89
170	16 <sup>1</sup> / <sub>2</sub> "W x 2 <sup>7</sup> / <sub>8</sub> "H	13.10
172	16 <sup>1</sup> / <sub>2</sub> "W x 4 <sup>3</sup> / <sub>4</sub> "H	24.04
174	16 <sup>1</sup> / <sub>2</sub> "W x 7 <sup>3</sup> / <sub>4</sub> "H	45.79
127	12"W x 2 <sup>3</sup> / <sub>8</sub> "H	9.07
125	12"W x 4 <sup>3</sup> / <sub>4</sub> "H	16.56
245	24"W x 4 <sup>3</sup> / <sub>4</sub> "H	36.43
247	24"W x 7 <sup>3</sup> / <sub>4</sub> "H	69.55

For sizes not listed, contact customer service.

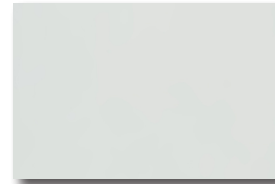


450 Riverside Drive • Wyalusing PA, 18853 • Phone 570-746-1888 • Fax 570-746-9286

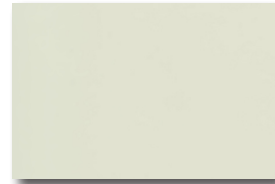
# Standard Color Selector



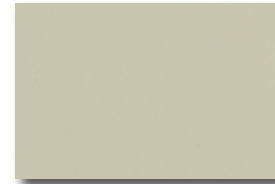
Apollo White



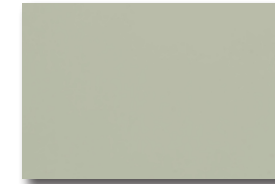
Bone White



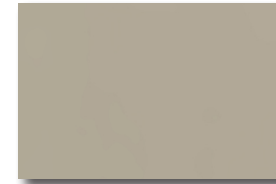
Colonial White



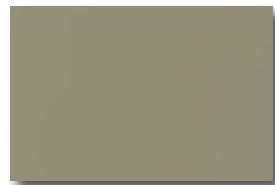
Autumn Mist



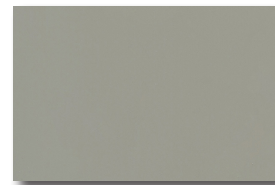
Sandstone



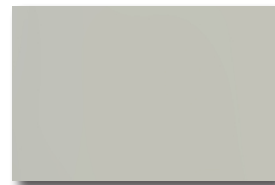
Beige



Sierra Tan



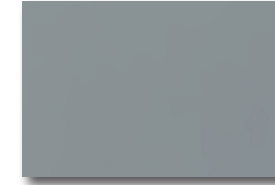
Seawolf



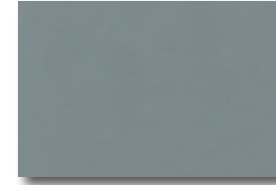
Agreeable Grey



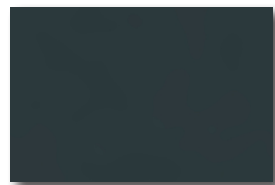
Slate Grey



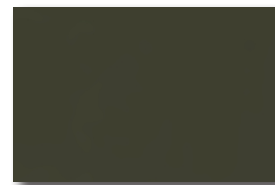
Cadet Grey



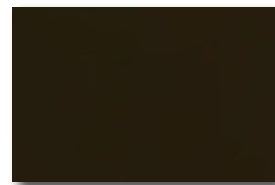
Fashion Grey



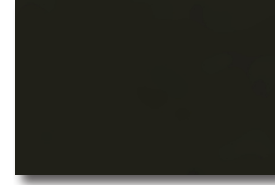
Charcoal Grey



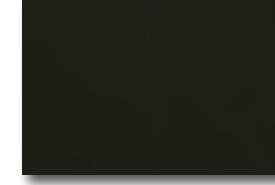
Antique Bronze



Regal Brown



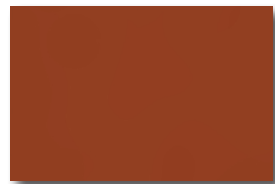
Dark Brown



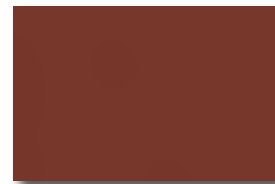
Statuary Bronze



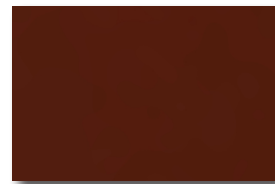
Coal Black



Terra Cotta



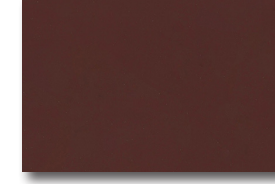
Brick Red



Colonial Red



Banner Red



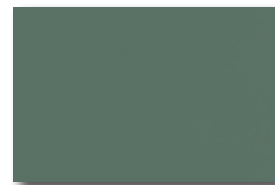
River Rouge Red



Boysenberry



Patina Green



Hemlock Green



Interstate Green

## Metallics



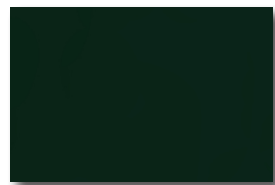
El Cajon Silver



Champagne



Light Bronze



Hartford Green



Light Blue



Interstate Blue



Medium Bronze



Dark Bronze

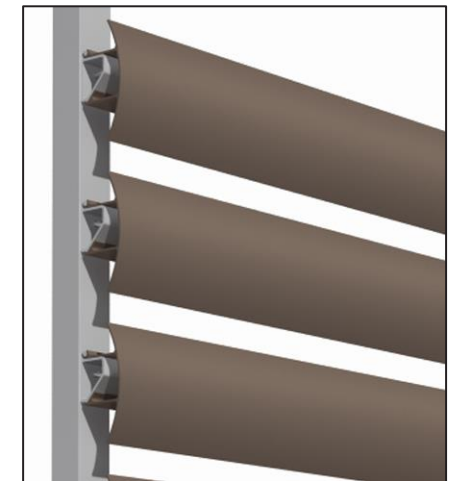
VisionGuard™ L30 Curved Louver  
Updated 03.15.2017

**VisionGuard™ L30 Curved Louver**



**Description:**

VisionGuard™ Curved Louvers are 90° curved face louvers designed for architectural and vision-proofing applications. Our continuous-blade design allows greater flexibility to achieve the aesthetics desired. Instead of the pre-framed panelized louvers commonly found on the market, VisionGuard louvers consist of individual continuous blades that can extend seamlessly across any distance without the need for frame flanges or mullions. If vertical mullions, or a panelized aesthetic is desired, it can easily be achieved with the use of trims.



**Components:**

- Louver Blade: .100" thick extruded aluminum, ASTM B 209, Alloy 6063-T6.
- Louver Clip: .125" thick extruded aluminum, ASTM B 209, Alloy 6063-T6.
- Vertical Tree: 3" x 3" x .188" thick extruded aluminum, ASTM B 209, Alloy 6063-T6.
- Self-Drilling Screw: #12-24 x 1.25" carbon with premium coating.
- SS Rivet: Stainless steel open end domed head .0187" x 0.565"

