

Marshall St. Elevation

OYSTER SHELL HOUSE

B

A

A

A

A

B

A

A

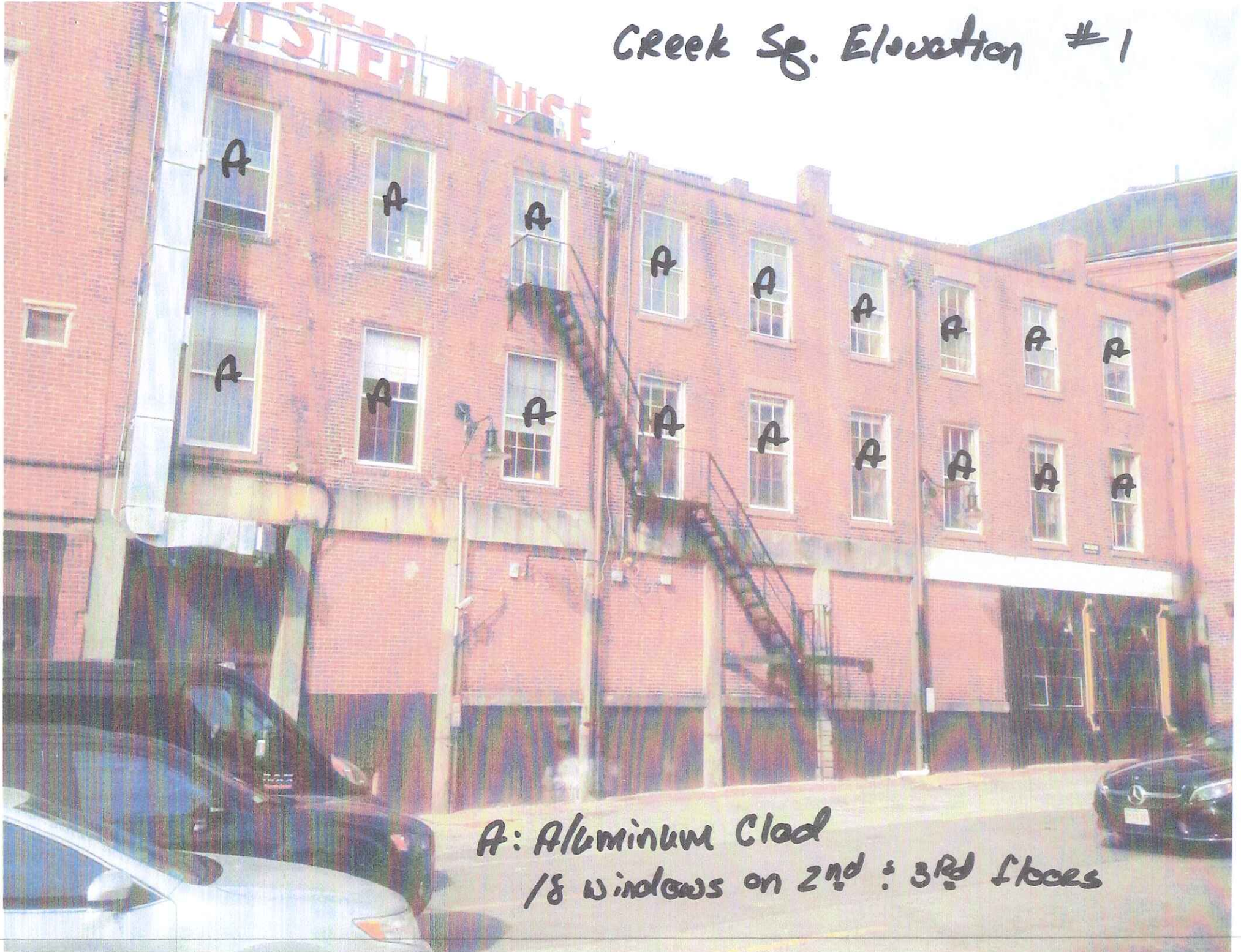
A

A

A: Aluminum Clad
& Windows

B: Custom Mahogany
2 windows

Creek Sq. Elevation #1



A: Aluminum Clad
18 windows on 2nd : 3rd floors

Creek Sq. Elevation #2

53 Union St



OYSTER SHELL HOUSE

A

A

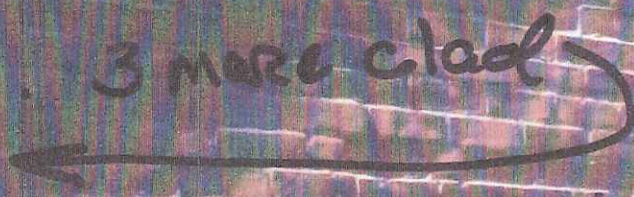
A

A

A: Aluminium Clad
4 Windows on 4th Floor

Marsh Lane Elevation

3 more clad



A



A

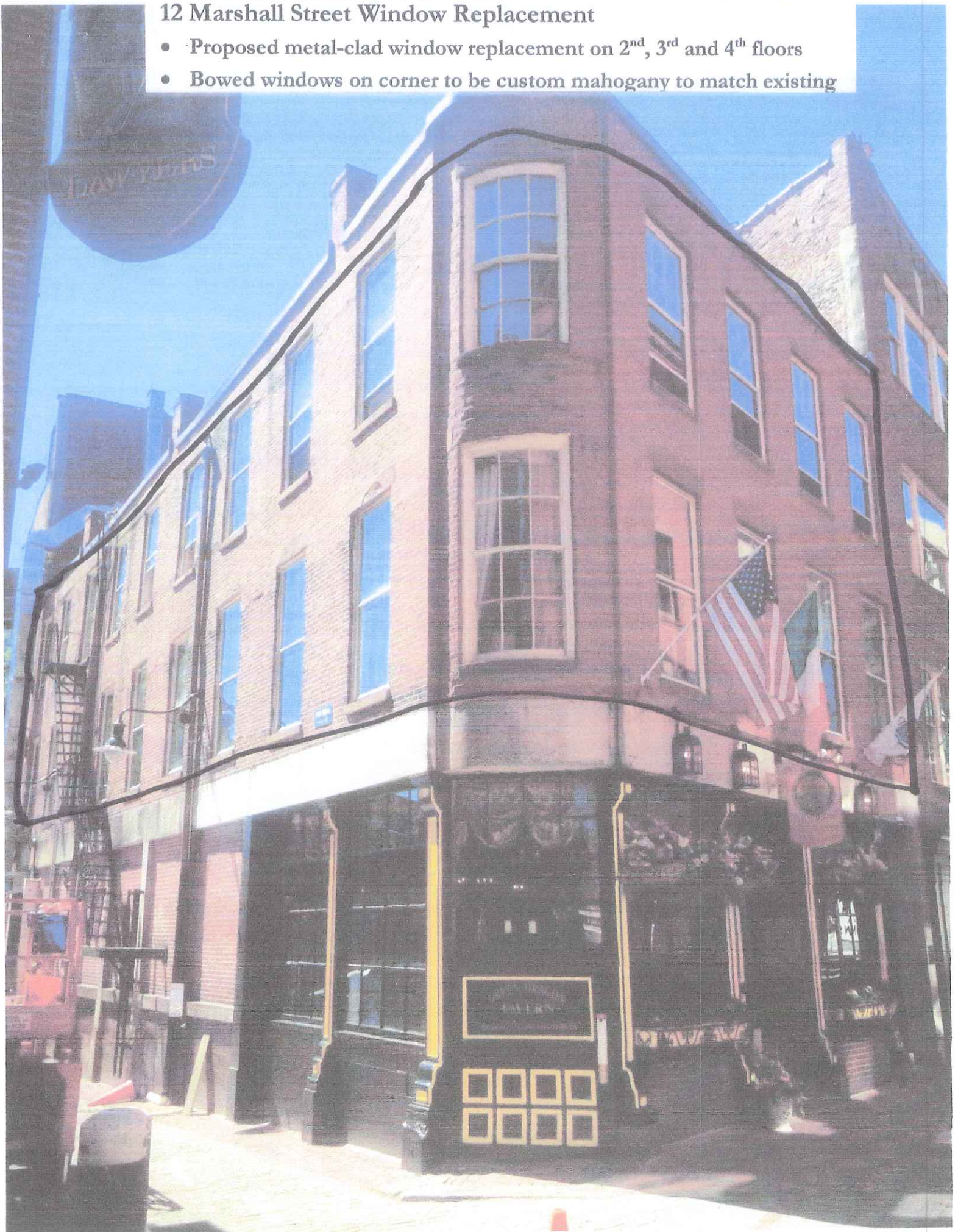
A

A

A: Aluminum Clad
7 Windows on 4th Floor

12 Marshall Street Window Replacement

- Proposed metal-clad window replacement on 2nd, 3rd and 4th floors
- Bowed windows on corner to be custom mahogany to match existing





55 Union Street

- 100% metal-faced windows on all floors
- Frontage on Marshall, Union and Hanover Streets

7 Marshall Street

- 100% metal-clad windows on all Floors above street level
- Windows installed in 2015
- Frontage on Marshall, Hanover and Blackstone Streets and Creek Square

12 Marshall Street – project location

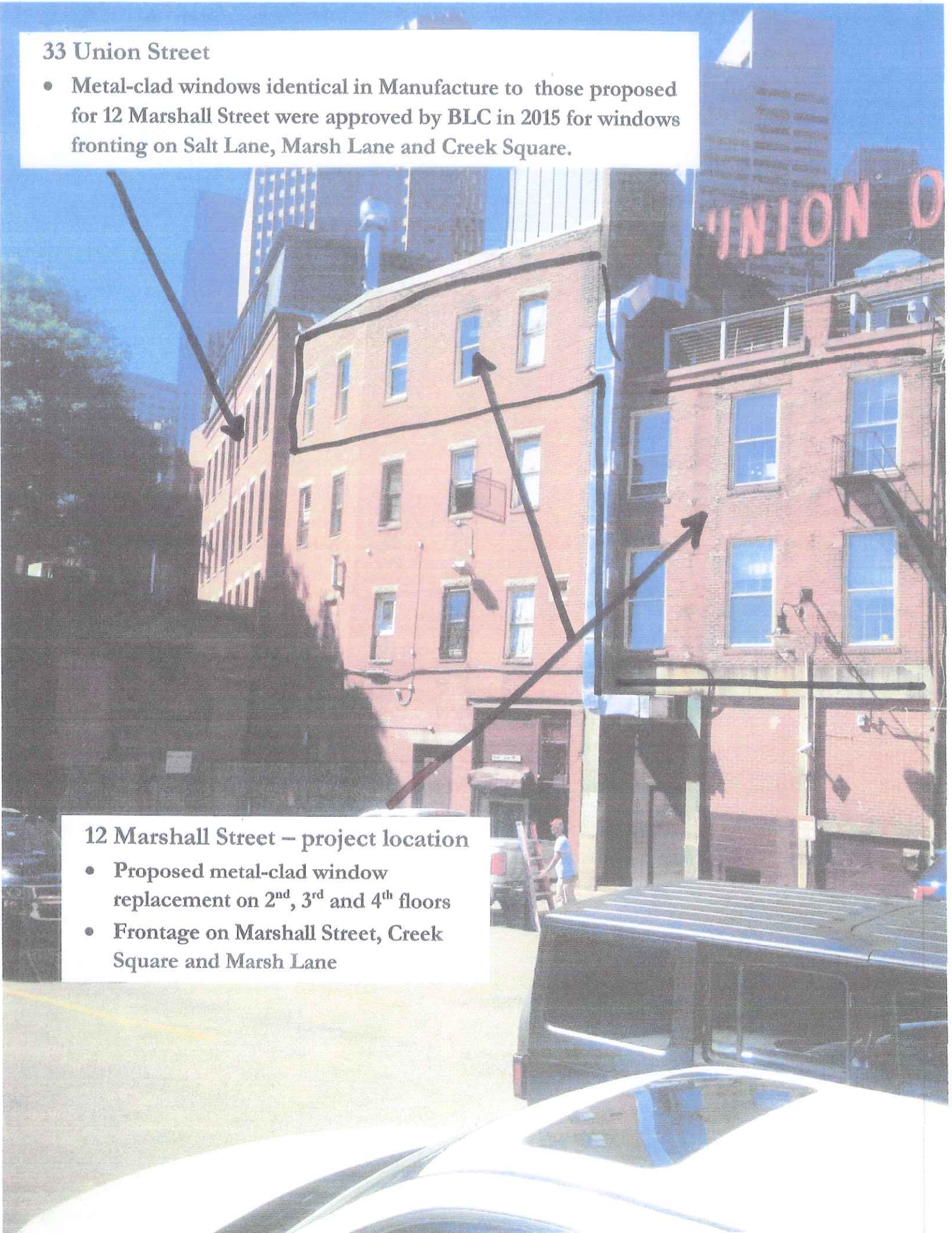
- Proposed metal-clad window replacement on 2nd, 3rd and 4th floors
- Frontage on Marshall Street, Creek Square and Marsh Lane

33 Union Street

- Metal-clad windows identical in Manufacture to those proposed for 12 Marshall Street were approved by BLC in 2015 for windows fronting on Salt Lane, Marsh Lane and Creek Square.

12 Marshall Street – project location

- Proposed metal-clad window replacement on 2nd, 3rd and 4th floors
- Frontage on Marshall Street, Creek Square and Marsh Lane





Blackstone Block

June 22, 2018

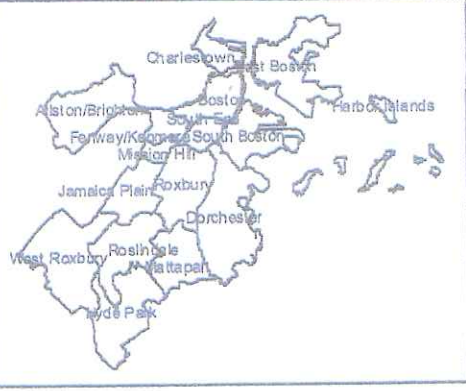


- Proposed Project**
- 33 Union Street**
 - Clad Windows approved under administrative review in 2015
- 7 Marshall Street**
 - Clad windows installed in 2015
- 55 Union Street**
 - 100% metal-faced windows

**MAP FOR REFERENCE ONLY
NOT A LEGAL DOCUMENT**

The City of Boston makes no claims, no representations, and no warranties, expressed or implied, concerning the validity (expressed or implied), the reliability, or the accuracy of the GIS data and GIS data products furnished by the City, including the implied validity of any uses of such data. The use of this data, in any such manner, shall not supercede any federal, state or local laws or regulations.



Blackstone Block

June 22, 2018



Proposed Project



Buildings in the Blackstone Block with clad or metal-faced windows

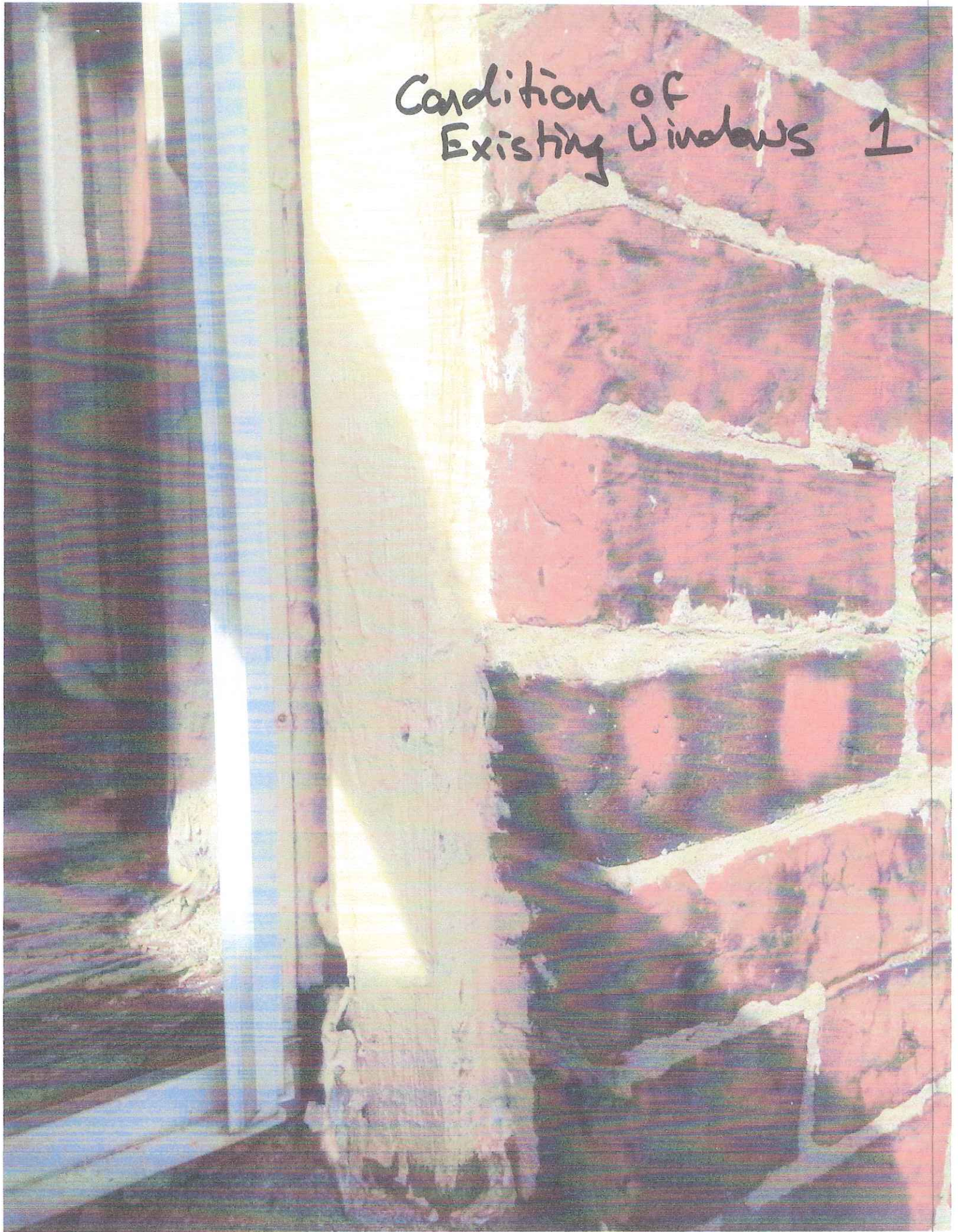


**MAP FOR REFERENCE ONLY
NOT A LEGAL DOCUMENT**

The City of Boston makes no claims, no representations, and no warranties, expressed or implied, concerning the validity (expressed or implied), the reliability, or the accuracy of the GIS data and GIS data products furnished by the City, including the implied validity of any uses of such data. The use of this data, in any such manner, shall not supercede any federal, state or local laws or regulations.



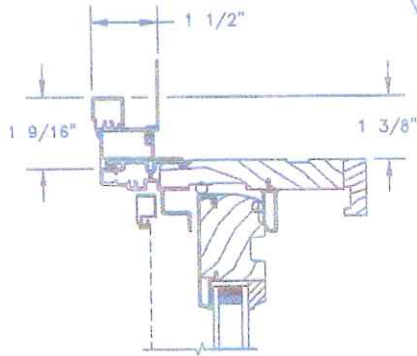
Condition of
Existing Windows 1



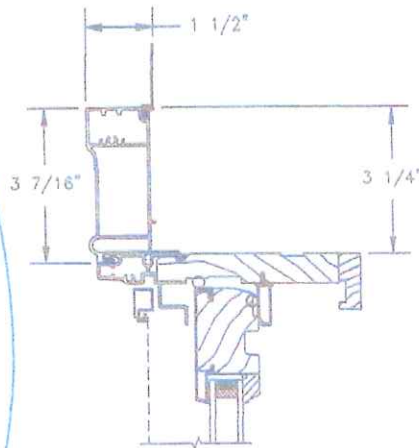


Pinnacle Series CLAD DOUBLE HUNG

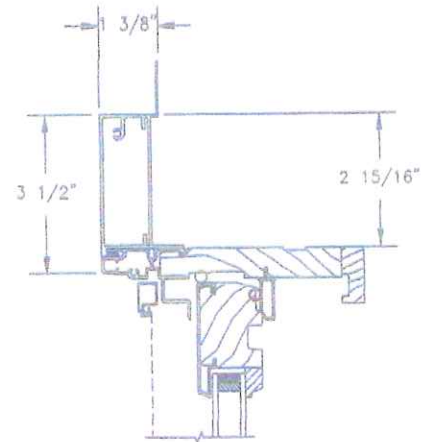
SECTION DETAILS : CASING OPTIONS
SCALE: 3" = 1'-0"



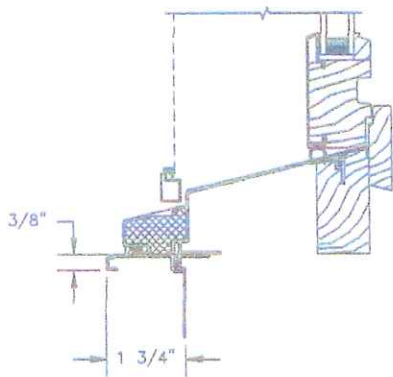
HEAD JAMB WITH
CLAD BRICKMOULD CASING



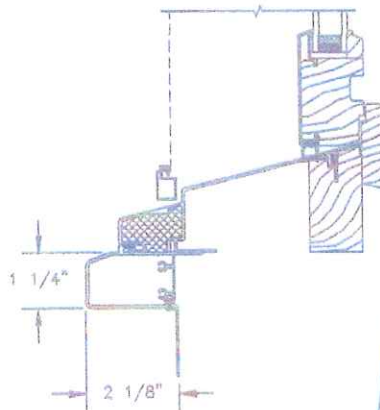
HEAD JAMB WITH
CLAD WILLIAMSBURG CASING



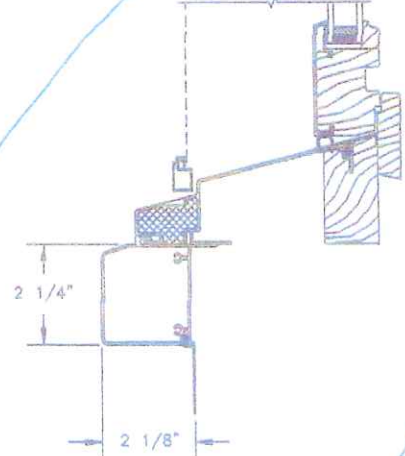
HEAD JAMB WITH
3 1/2" CLAD FLAT CASING



SILL WITH
3/8" CLAD SUBSILL



SILL WITH
1 1/4" CLAD SUBSILL



SILL WITH
2 1/4" CLAD SUBSILL






CLAD BRICKMOULD CASING
WITH OPTIONAL J-CHANNEL COVER

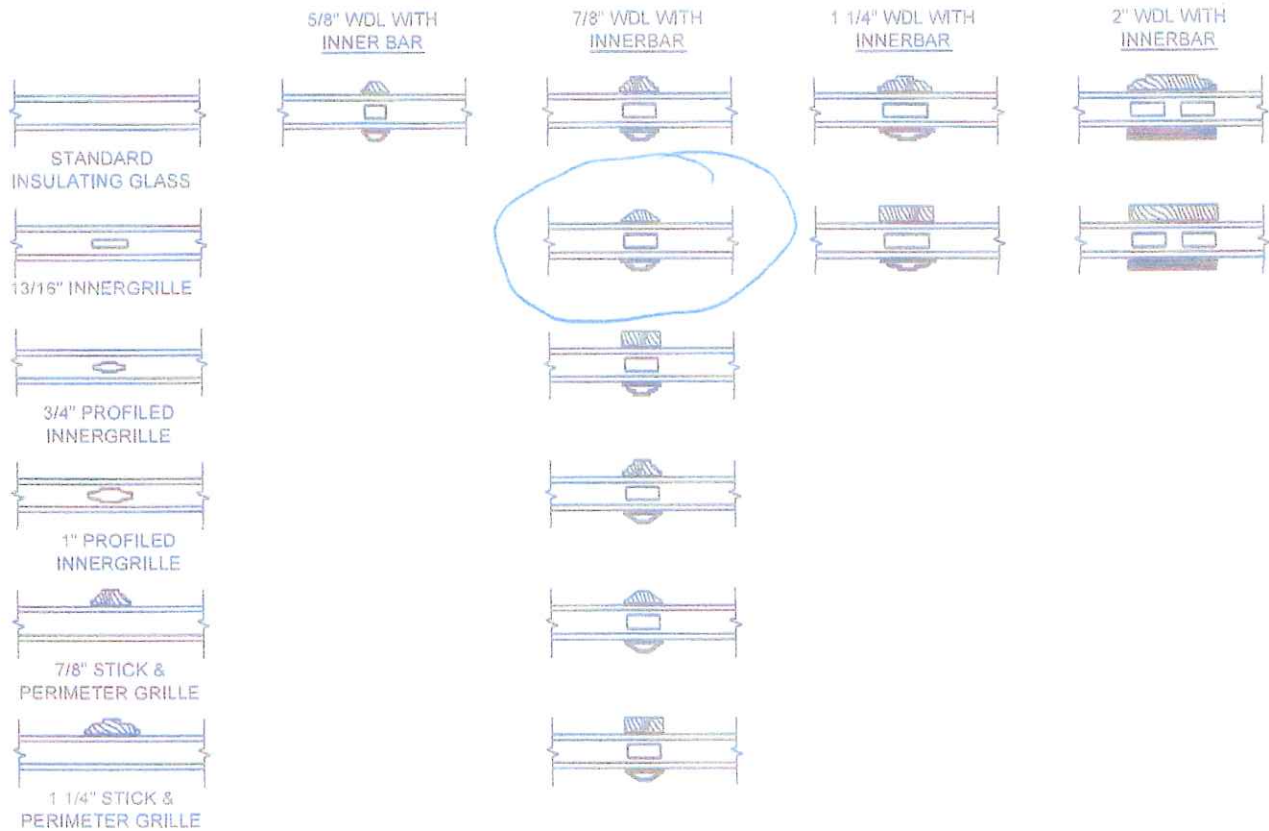
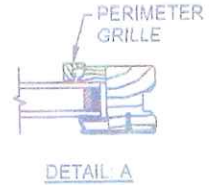
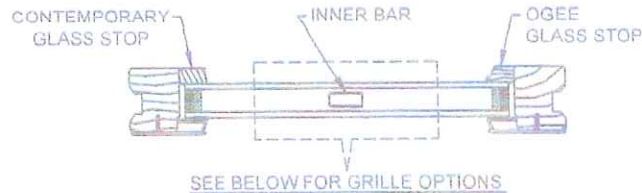
Pinnacle Series

CLAD DOUBLE HUNG

SECTION DETAILS : DIVIDED LITE OPTIONS
 SCALE: 3" = 1'-0"

AVAILABLE STYLES

-  - PUTTY
-  - OGEE
-  - CONTEMPORARY



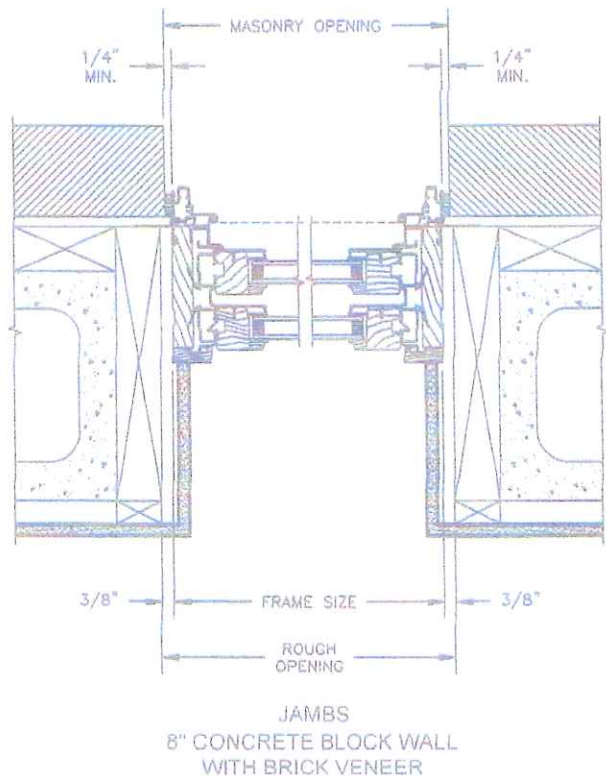
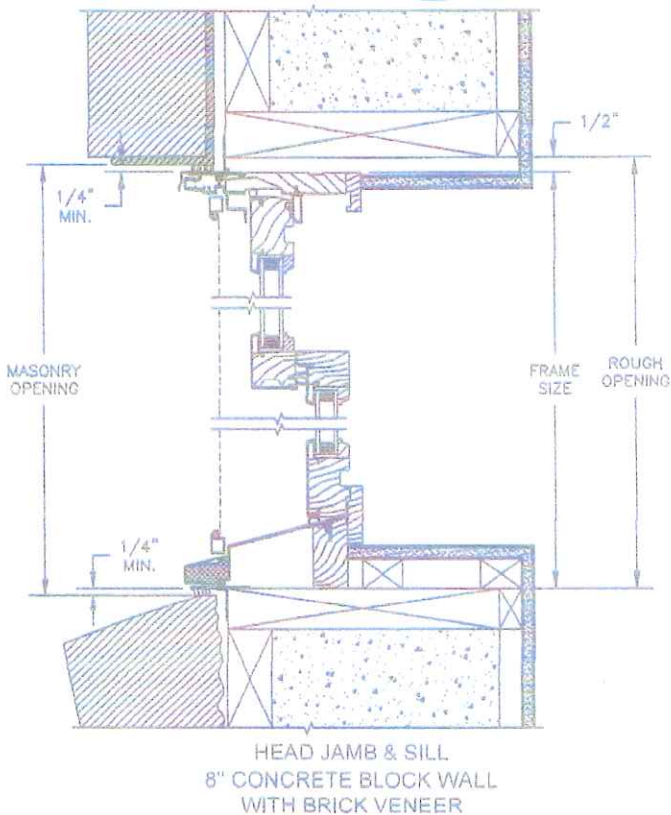
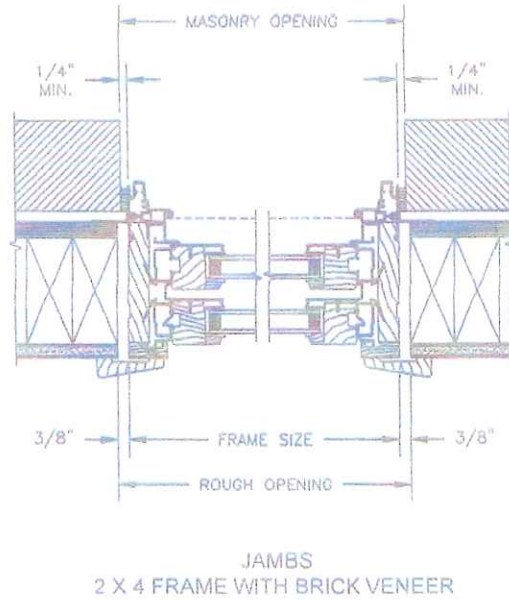
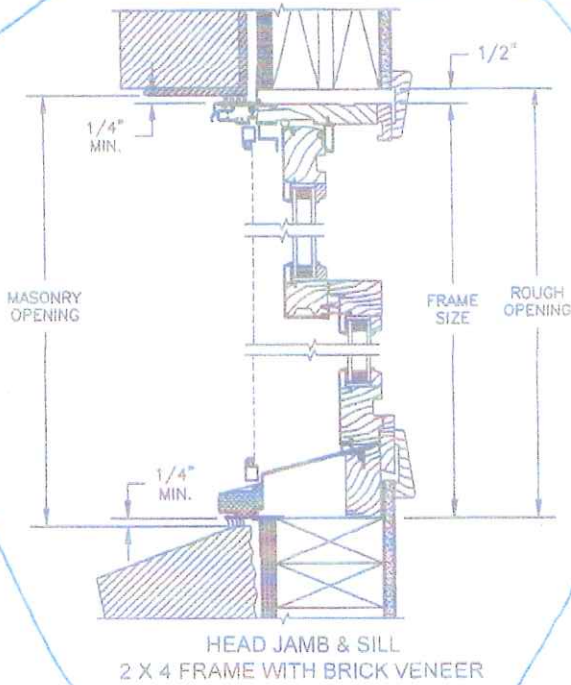
NOTE

- * ALL WDL OPTIONS CAN BE ORDERED WITH OR WITHOUT INNER BAR
- * PERIMETER GRILLES ONLY AVAILABLE IN THE 7/8" AND 1 1/4" OGEE STYLE GLASS STOP (SEE DETAIL A)

9/28/16

Pinnacle Series CLAD DOUBLE HUNG

SECTION DETAILS · CONSTRUCTION
SCALE: 2" = 1'-0"





Dealer: **BROSCO - PORTLAND**
203 READ STREET

PORTLAND ME 04103
Phone: 978-475-7100 Fax: 866-582-6899

Customer
Quote

Spec Report

QUOTE #	STATUS	PK#	DATE PRINTED
1119268	None	220	3/30/2017 9:41 AM
CUSTOMER JOB NAME	QUOTE NAME	PROJECT NAME	QUOTE LAST MODIFIED
	DeNormandie	12 Marshall St	3/30/2017 7:39:49 AM

Line Number: 100 Room ID: top Floor

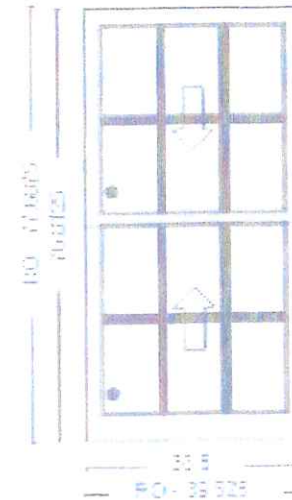
Line Item Qty: 13

Dimensions

Frame Size: 38.5" X 76.8125" Unit Dimension: 41 5/16" X 80 1/2"
Rough Opening: 39 5/8" X 77 11/16" Masonry Opening: 42 1/16" X 81"

Details

Pinnacle Clad Feature Color Sunflower Double Hung XXXX-1 Complete Unit Dual Low-E IG 4-9/16 Jamb Ext (Room ID: top Floor)(2605 Powder)(Setup (Standard))(Concealed Jambliner)(Glass Stop Profile: Ogee)(FD: 38.5 x 76.8125)(Interior Prime)(White Hardware)(Clad WM 180 Brickmould)(Clad 2 1/4 Subsill)(7/8" Putty WDL Short w/Inner Bar)(Ogee WDL Interior Profile)(Colonial 3W2H/3W2H) (Sunflower Screen - Not Applied)(BetterVue)(Energy Star: Meets all US Zones)(LC-PG35-H) Performance Data:(U-Value: 0.27)(SHGC: 0.18)(VT: 0.4)(CR: 47)



** All units are viewed from the exterior.

Performance Information

(U-Value: 0.27)(SHGC: 0.18)(VT: 0.4)(CR: 47)

- * (SHGC) Solar Heat Gain Coefficient
- * (VT) Visible Transmittance
- * (CR) Condensation Resistance
- * (AL) Air Leakage

Line Number: 200

Room ID: Lower Floor

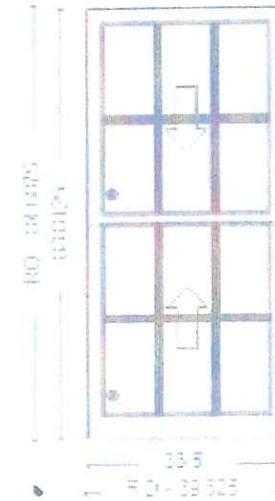
Line Item Qty: 13

Dimensions

Frame Size:	38.5" X 83.8125"	Unit Dimension:	41 5/16" X 87 1/2"
Rough Opening:	39 5/8" X 84 11/16"	Masonry Opening:	42 1/16" X 88"

Details

Pinnacle Clad Feature Color Sunflower Double Hung XXXX-1 Complete Unit Dual Low-E IG 4-9/16 Jamb Ext (Room ID: LowerFloor)(2605 Powder)(Setup (Standard))(Concealed Jambliner)(Glass Stop Profile: Ogee)(FD: 38.5 x 83.8125)(Interior Prime)(White Hardware)(Clad WM 180 Brickmould)(Clad 2 1/4 Subsill)(7/8" Putty WDL Short w/Inner Bar)(Ogee WDL Interior Profile)(Colonial 3W2H/3W2H)(Sunflower Screen - Not Applied)(BetterVue)(Energy Star: Meets all US Zones)(LC-PG35-H)
Performance Data:(U-Value: 0.27)(SHGC: 0.18)(VT: 0.4)(CR: 47)



** All units are viewed from the exterior.

Performance Information

(U-Value: 0.27)(SHGC: 0.18)(VT: 0.4)(CR: 47)

* (SHGC) Solar Heat Gain Coefficient

* (CR) Condensation Resistance

* (VT) Visible Transmittance

* (AL) Air Leakage