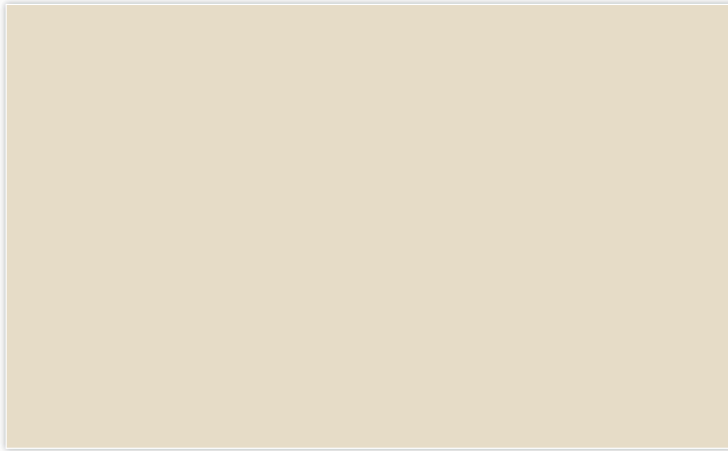


81 Mount Vernon Street
Boston, MA







Natural Wicker

OC-1

This colour is part of the Historic Colour collection. A collection of 191 time-honoured hues comprises our most popular palette. Steeped in tradition, the refined, elegant colours of the Historical Collection deliver timeless colour that can be used in traditional as well as contemporary spaces. Unveiled in 1976 to celebrate the US bicentennial, these colours are inspired by America's historic landmarks.

This colour is part of the Historic Colour collection. A collection of 191 time-honoured hues comprises our most popular palette. Steeped in tradition, the refined, elegant colours of the Historical Collection deliver timeless colour that can be used in traditional as well as contemporary spaces. Unveiled in 1976 to celebrate the US bicentennial, these colours are inspired by America's historic landmarks.



1674BK

in Black from the Edgewater family.

Width:	6.5"
Height:	11"
Weight:	4 lbs.
Material:	Cast Aluminum
Glass:	Seedy Glass Panels
Bulb:	One 60w Medium Base
Voltage:	120v
TTO:	5.5"
Leadwire:	0"
Chain:	0"
Extension:	6.5"
Back Plate Height:	7"
Back Plate Width:	5"
Certification:	c-UL-us Wet
UPC:	640665167429















THE
COASTAL
8000



Top frame designed with water-shed edge. Sash and frame completely double wool-pile insulated for maximum insulation. The sash is designed with ratchet-type stops to allow sash to be raised without holding handles in. Positive locking in closed position for maximum security, as well as a heavy-duty wind-bar, and a telescoping sill piece.

DESIGNED FOR
HOME AND
COMMERCIAL
USE

COASTAL 8000 SPECIFICATIONS

DESIGN - COMBINATION STORM AND SCREEN WINDOWS: The combination storm window with screen is designed with three full tracks where each of the two glass panels and one screen panel slide. Each of the three panels slide the full height of the window. Use of the screen panel in the upper or lower half of the opening. Position of screen is such that it will be exposed to weather only in the lower half of the opening when used for insect-free ventilation.

Design of the three-panel unit has "TILT ACTION" permitting easy removal from inside for washing glass or screen replacement. All inserts are self-storing in the master frame.

ALUMINUM MATERIALS: The master frame of the combination storm window is a tubular frame manufactured of extruded 6063-T5 aluminum alloy with a wall thickness range of .055 to .062. The glass and screen panel inserts are manufactured of extruded 6063-T5 aluminum alloy with a mean wall thickness of .055. All master frame dimensions are permitted a manufacturing tolerance of plus or minus 1/8". Extrusion tolerances are in accordance with those set down by the Aluminum Extruded Product of the Aluminum Association.

Corner reinforcement angles or gussets are a zinc casting Zamak. Coil springs are stainless steel.

Phillips or slotted head screws are self-tapping stainless steel except installation made in conjunction with wood where screws are aluminum.

HARDWARE: Hidden spring loaded slide bolts of zinc die casting Zamak material are provided as locking devices.

FINISH: The entire combination storm and screen window can be supplied in white or quaker bronze electrostatically baked-on enamel.

CONSTRUCTION: The master frame of the window is constructed butt-jointed at sill and header. Master frame is constructed with self-contained slots to receive 2 screws at each corner to pull section of frame in tight.

Master frame is constructed with intermediate stops along the side rails to permit controlled ventilation with glass panel inserts. Head section of master frame has a channel as part of frame so that the top glass insert fits into channel closed. Weep holes are provided in bottom track of the master frame to provide the draining of water. Additional weeps are also provided along the lower edge of the expanders attached to the bottom of the master frame. Corners of all glass insert panels shall be of butt-joint construction.

The 2 glass inserts shall be glazed with single or double strength type B glass and set in with marine vinyl glazing. The aluminum sash frame shall be held together with 4 stainless steel screws with pivot pins in top corners.

Screening shall be 18 x 16 mesh fiberglass wire held in the insert frame with a solid vinyl spline.

Each window has an aluminum extruded mullion attached by 4 stainless steel screws to the center of the master frame.

WEATHERSTRIPPING: All weatherstripping shall be poly or nylon fiber with double-pile side shield at head and sill jambs. Main frame jambs shall be full length double side shield. Meeting rail shall be double metal interlock with wool pile.

The screen inserts are of overlapping type with both sides and top weatherstripped to prevent insect entry.

Glass inserts when in closed position have a metal interlock at the meeting rail.

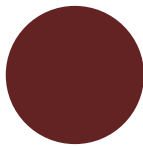
INSTALLATION: Attach as needed to suit construction.

Apply a uniform bead of caulking compound along jambs and head of blind stop and the master frame set there in. Screws are used on each side and along the top to secure the combination storm and screen window.

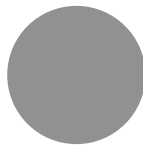
COLORS, COLORS, COLORS, COLORS

Don't miss out on COLOR! We also offer Powder-Coating on all Aluminum Storm products!

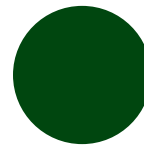
A few common colors are:



3009 Brick Red



7045 Grey

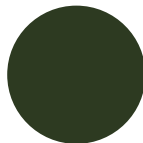


6002 Forest Green

*Colors are for reference only. Please consult color chart when ordering.



8022 Black



6020 Green



1014 Yellow

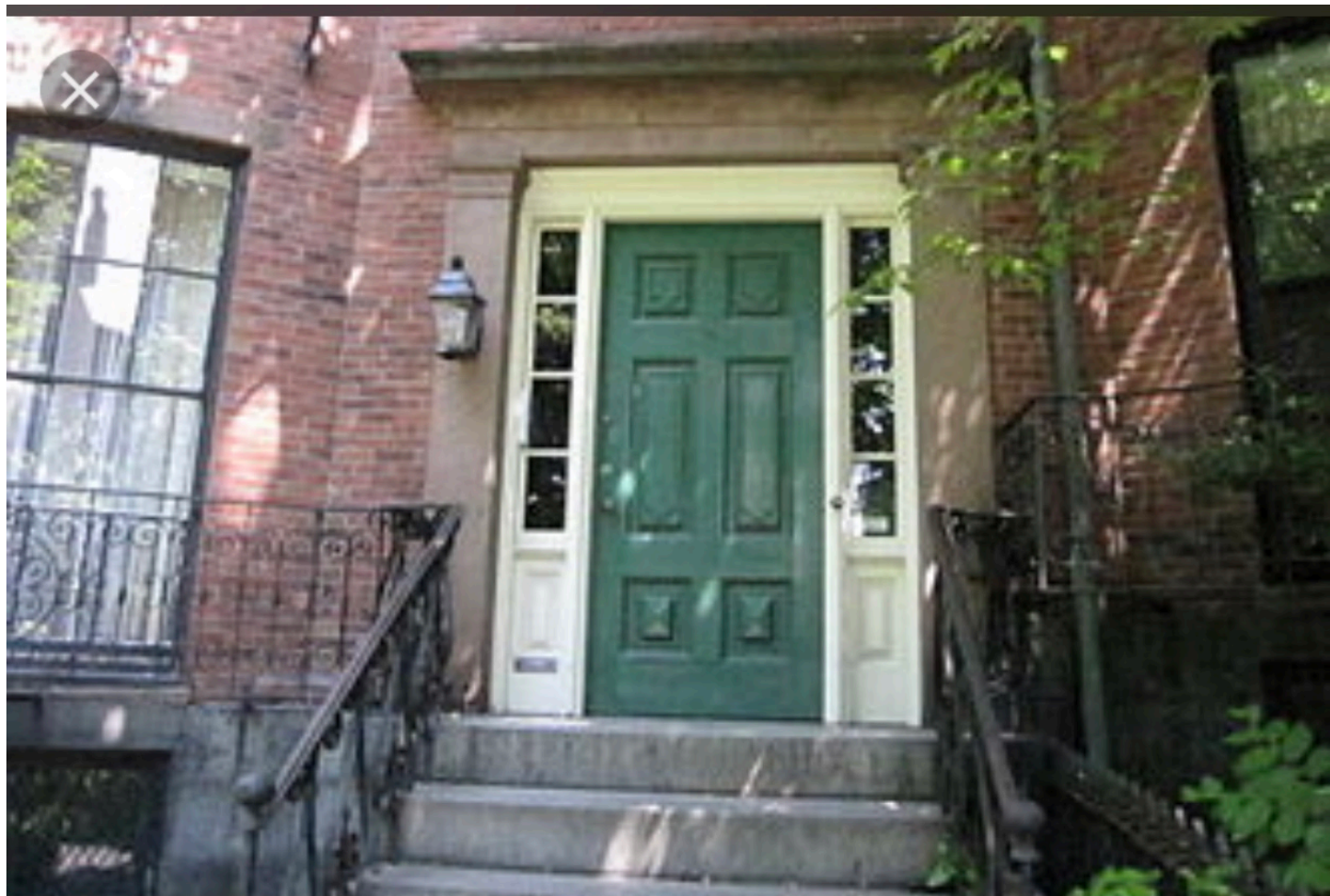


77 Newark St., Haverhill, MA 01832

Tel.: 800-351-1065

www.ciiwindows.com

sales@ciiwindows.com

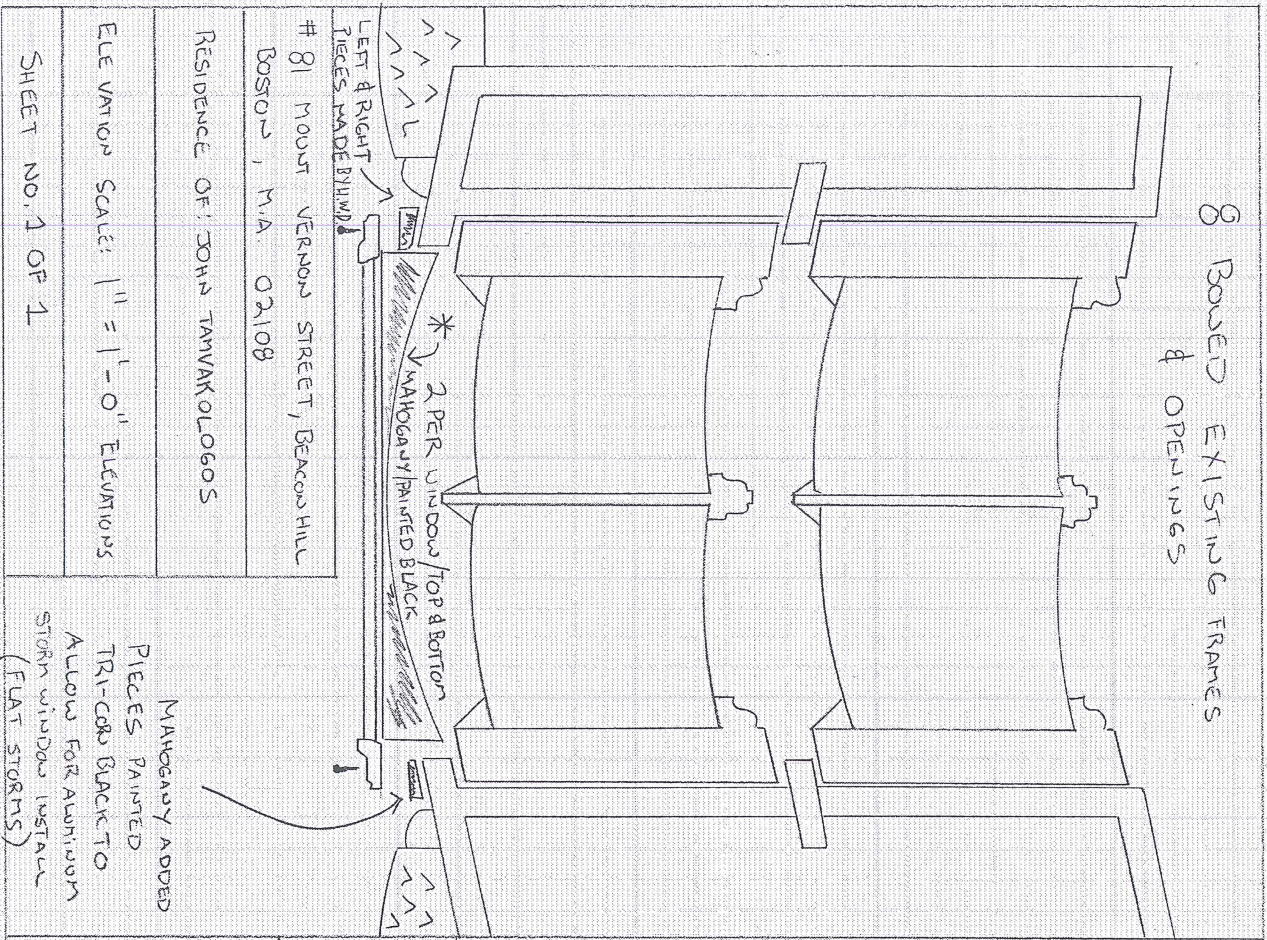








8 BOWED EXISTING FRAMES
& OPENINGS



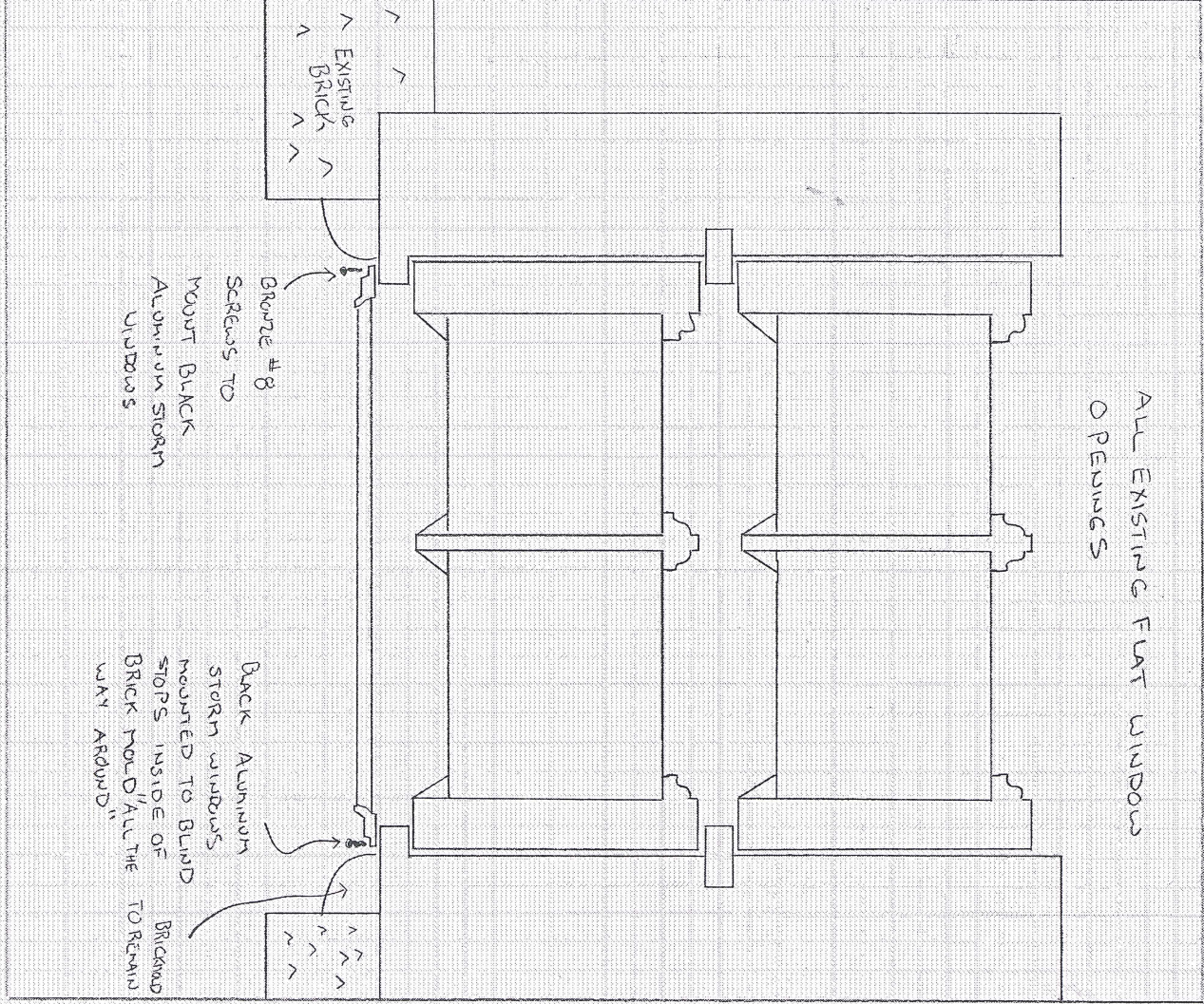
81 MOUNT VERNON STREET, BEACON HILL
BOSTON, M.A. 02108

RESIDENCE OF: JOHN TANVAKOLOGOS

ELEVATION SCALE: 1" = 1'-0" ELEVATIONS

SHEET NO. 1 OF 1

ALL EXISTING FLAT WINDOW
OPENINGS



EXISTING BRICK

GROUT # 8
SCREWS TO
MOUNT BLACK
ALUMINUM STORM
WINDOWS

BACK ALUMINUM
STORM WINDOWS
MOUNTED TO BLIND
STOPS INSIDE OF
BRICK MOLD "ALL THE
WAY AROUND"

JOB ESTIMATE - PLANTING Notes/Diagram

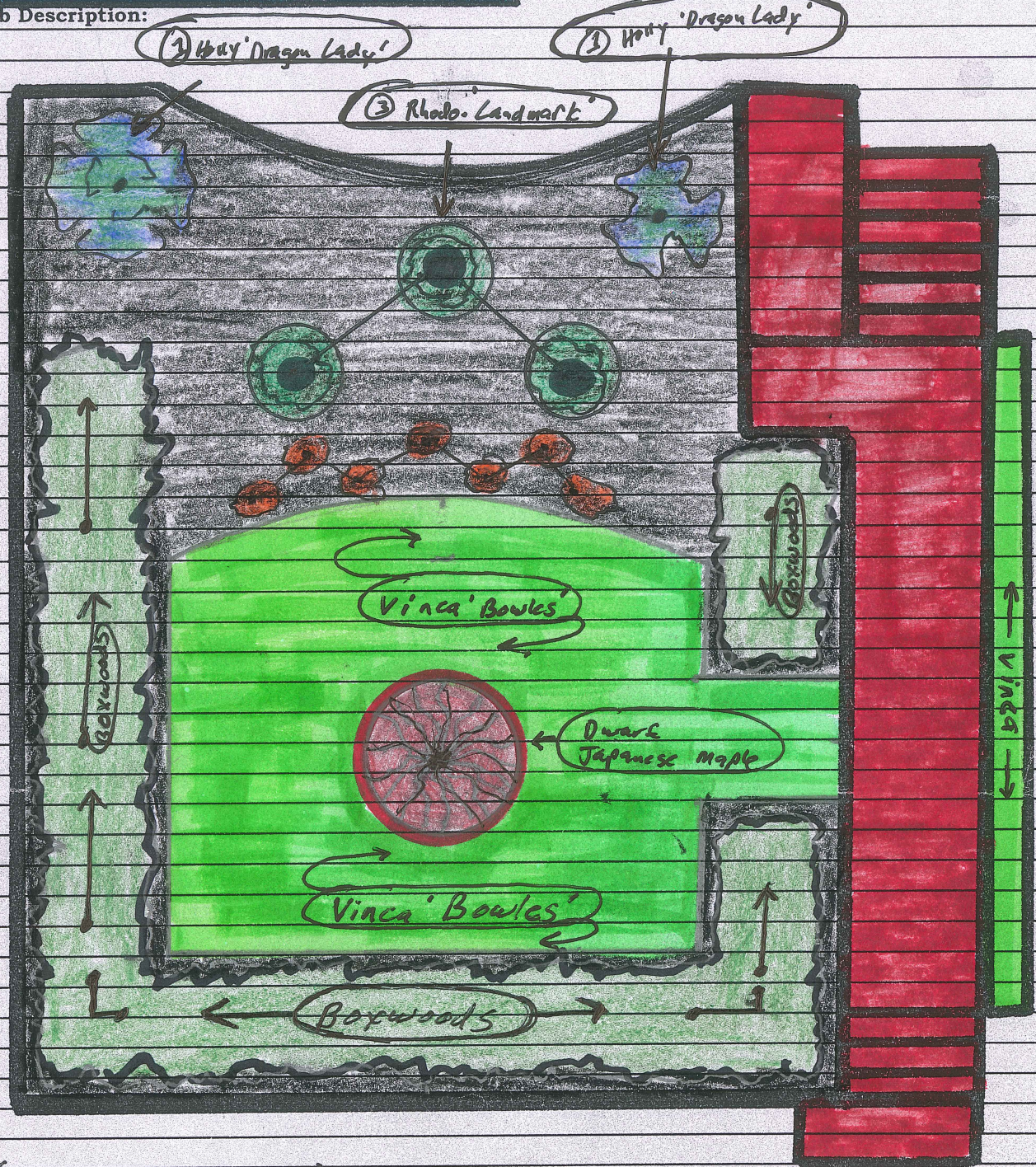
Name: The Tamakologos Residence
Address: 81 Mount Vernon Street
Phone / Email: Boston, MA

Job Total	
Date: <u>3/22/18</u>	Prep By: <u>JO</u>
Appointment Date:	
Estimate Due Date:	
Budget:	

Job Name:

FRONT COURTYARD:

Job Description:



(NOT TO SCALE)

Buxus sempervirens 'Vardar Valley'

Common Name(s):
Vardar Valley boxwood

Category:
[Shrubs](#)

Comment:
Flowers attract bees

Height:
2-3 ft.

Foliage:
Opposite, simple, leathery green leaves; holds color in winter

Flower:
Pale green, non-showy flowers

Zones:
5b to 8

Habit:
Evergreen

Site:
Sun to partial shade; moist, well-drained soil

Texture:
Medium to fine

Form:
Dense, compact, flat-topped mound

Width:
3-6 ft.

Tags:
evergreen



Buxus sempervirens 'Vardar Valley'

Vinca minor

Common Name(s):
Dwarf periwinkle, Periwinkle

Cultivar(s):
Variegata, Bowles

Category:
[Groundcover](#)

Comment:
Excellent for large natural areas; this plant is resistant to damage by deer.
Can become weedy.

Height:
4-6 in.

Hardiness:
4 to 8

Foliage:
Shiny dark green oblong to oval leaves

Flower:
0.5 in. lilac-blue funnel-shaped flowers in spring

Habit:
Evergreen

Site:
Partial shade to shade

Size:
Height 4-6 in.

Texture:
Medium

Form:
Non-climbing dense mat

Growth Rate:
Rapid

Tags:
apvg, deer resistant, evergreen



Vinca minor

xlibber, [CC BY - 2.0](#)



Vinca minor

Beautifulcataya, [CC BY - 2.0](#)



Tamukeyama Japanese Maple

Acer palmatum var. *dissectum*
'Tamukeyama'

Item #2909 USDA Hardiness Zone: 5 - 8



Availability



Check Selected Retailers



Add to Favorites



Plant Description

A graceful, mounding, dwarf tree with waxy, deep red bark and beautiful cascading branches. Deeply lobed foliage is a beautiful purple-red throughout the summer and turns bright red in the fall. An ideal accent for Asian-themed gardens. Well-suited for use as a container specimen. Deciduous.

Overview

Light Needs:



Partial shade to partial sun

Watering Needs:



Water regularly - weekly, or more often in extreme heat or containers.

Average Landscape Size:



Slowly reaches 6 to 10 ft. tall, 10 to 12 ft. wide.

Key Feature:



Exquisite Foliage and Form

Blooms:



Inconspicuous; prized for foliage.

Landscape Uses:



Container, Firescaping/Fire Wise, Specimen, Urban



Little Henry® Dwarf Virginia Sweetspire

Itea virginica 'Sprich' Plant Patent #10,988

Item #4649 USDA Hardiness Zone: 5 - 9



Availability



Check Selected Retailers



Add to Favorites



Plant Description

This compact Sweetspire starts out the summer with a beautiful display of fragrant white flowers that blanket the shrub. As summer progresses shiny, disease-free foliage appears until fall when the foliage turns a stunning garnet-red. Full sun exposure will produce more vibrant fall color. Perfectly suited for covering large banks, beds and borders.

Overview

Light Needs:



Partial shade to full sun

Watering Needs:



Water regularly in extreme heat. Requires less water once established.

Average Landscape Size:



Reaches 2 to 3 ft. tall and wide.



Landmark Rhododendron

Rhododendron x 'Landmark'

Item #40575 USDA Hardiness Zone: 5 - 8



Availability



Buy Online Now



Check Selected Retailers



Add to Favorites



Plant Description

Enjoy cheerful spring color from this compact mid-season bloomer that produces showy trusses of wavy-edged, deep fuchsia-pink flowers with a faint scarlet spotting. More sun tolerant than most, the small, dark green leaves turn bronze in the winter. Highly effective as an accent or hedge. Evergreen.

Overview

Light Needs:



Partial sun

Watering Needs:



Water regularly - weekly, or more often in extreme heat.

Average Landscape Size:



Moderate growing; reaches 4 ft. tall and wide.