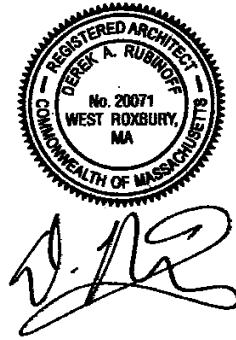


# 198-202 WARREN AVE

198-202 WARREN AVE, BOSTON, MA 02116

## DESIGN CHANGES

DESIGN REVIEW APPLICATION 03/14/2018



EXISTING CONDITIONS



PROPOSED ELEVATION

### PROJECT SCOPE:

THE WORK WILL BE FOCUSED ON THE FRONT FACADE. THE SCOPE IS TO REMOVE THE PAINT FROM THE STONE TRIM & REPLACE THE WINDOWS ON THE LEFT AND RIGHT SIDES OF THE FACADE. THESE OPENINGS WILL BE FILLED & ENLARGED AS REQUIRED FOR NEW PAIRS OF INTERIOR/EXTERIOR WOOD, DOUBLE HUNG, 6/6 EXTERIOR APPLIED SIMULATED DIVIDED LITES, BLACK SASH WINDOWS. THE WINDOWS WILL HAVE STONE SILLS TO MATCH EXISTING STONE SILLS ABOVE. THEY WILL ALSO HAVE NEW STONE LINTELS TO MATCH EXISTING FOURTH FLOOR LINTELS. THE DOORS WILL BE REPLACED WITH WOOD DOORS & PAINTED BLACK. THE STORM DOORS WILL BE REMOVED AND NOT REPLACED. THE WOOD PANELING IN THE ALCOVES WILL RECEIVE ADDITIONAL TRIM; THESE AREAS WILL BE REFINISHED AND REPAINTED. THE STONE TRIM AT THE BASE OF THE RIGHT WALL WILL ALSO BE REPLACED TO MATCH THE EXISTING TRIM ON THE LEFT SIDE. TWO SCUNCES WILL BE ADDED TO EITHER SIDE OF THE EXTERIOR FRONT DOOR FOR UNIT 200. ALL WINDOWS ON THE FRONT FACADE ABOVE THE GROUND FLOOR WILL BE REPLACED WITH WOOD FRAMED INTERIOR/EXTERIOR, DOUBLE HUNG, 6/6 EXTERIOR APPLIED SIMULATED DIVIDED LITES, BLACK SASH WINDOWS.

### PROJECT DIRECTORY

**OWNER:**

198-202 Warren Avenue LLC,  
745 Boylston Street, Third Floor  
Boston MA, 02116  
CONTACT: Tana Weissman  
PHONE: 617-850-9678  
EMAIL: jweissman@bradvisors.com

**ARCHITECT:**

Derek Rubino, Architect  
82 Spring Street  
West Roxbury, MA 02132  
CONTACT: Dror Amitay  
MOBILE: (Dror) 617-283-0802  
EMAIL: damitay@derekubino.com

**CONTRACTOR:**

Sean Fennel/Fennel Engineering  
1000 Haverhill St  
Rowley, MA 01969  
CONTACT: Sean Fennel  
PHONE: 978-948-3626  
EMAIL: seanfennell@verizon.net

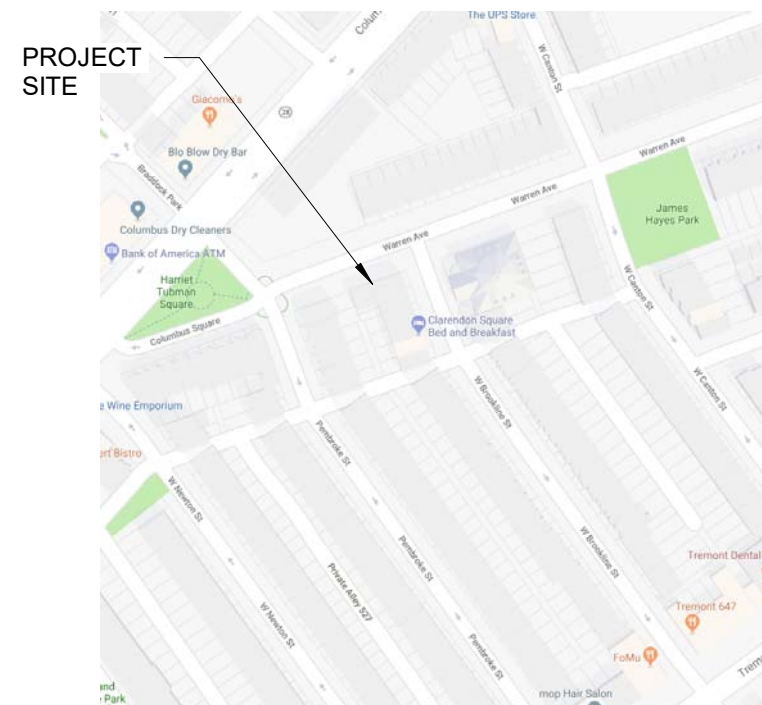
### CODE SUMMARY

APPLICABLE CODES BOSTON, MASSACHUSETTS

1. BUILDING : 780 CMR 9th EDITION

DESCRIPTION	CODE REFERENCE	REQUIREMENT	PROPOSED
<b>GENERAL</b>			
CONSTRUCTION TYPE	III B		

### LOCATION MAP



#### Sheet List

	Sheet Number
<b>01 - General</b>	
Cover	G-000
Existing Conditions	G-001
<b>02 - Architectural</b>	
Demolition & Construction Plans	A-101
Demolition Front Elevation	A-201
Construction Front Elevation	A-202
Rendered Front Elevation	A-203

**DEREK RUBINOFF ARCHITECT**  
82 Spring Street, West Roxbury, MA 02132-4316 617-504-2599 inquiries@derekubino.com

#### Cover

198-202 Warren Ave.  
198-202 Warren Ave.  
Boston, MA 02116

JOB #: 1623  
SCALE: 1/4" = 1'-0"  
DATE: 03/14/2018  
DWN BY: CM  
CROSS REF:

**G-000**



**DEREK RUBINOFF ARCHITECT**

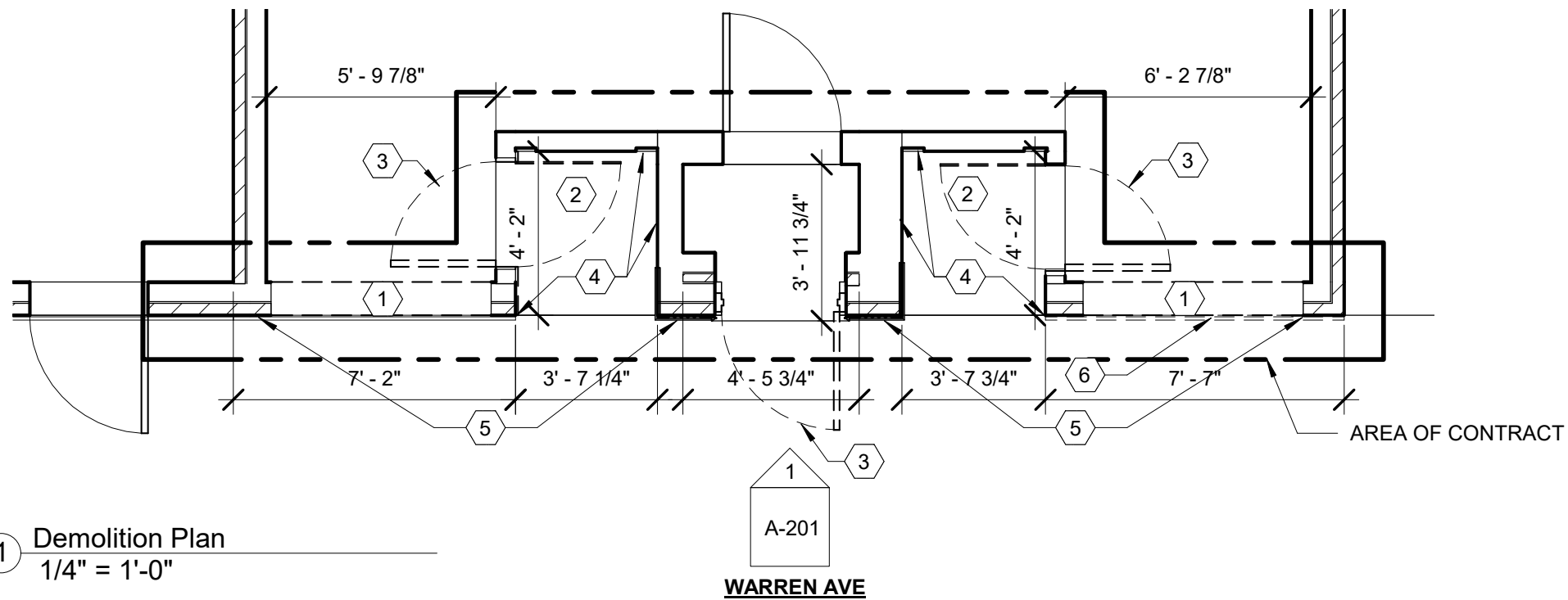
82 Spring Street, West Roxbury, MA 02132-4316 617-504-2599 inquiries@derekubinoff.com

**Existing Conditions**

198-202 Warren Ave.  
198-202 Warren Ave.  
Boston, MA 02116

JOB #:	1623
SCALE:	
DATE:	03/14/2018
DWN BY:	CM
CROSS REF:	

**G-001**

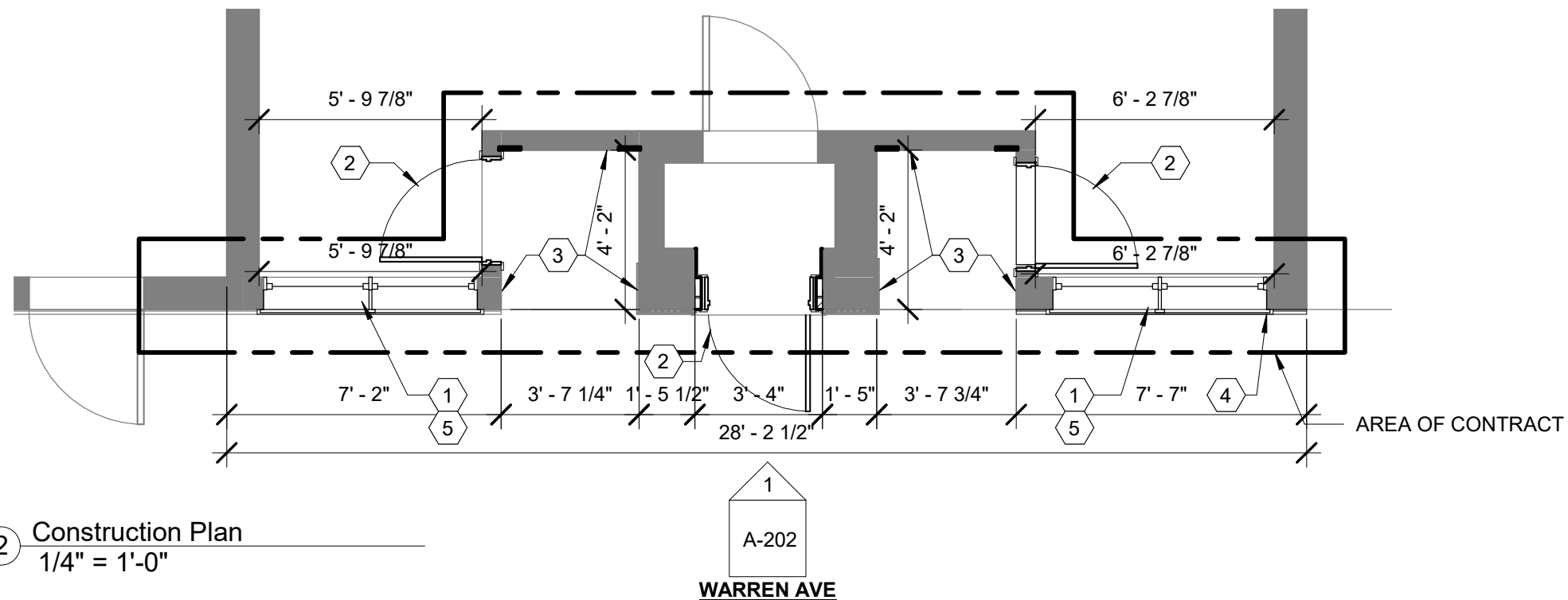


1 Demolition Plan  
1/4" = 1'-0"

DEMOLITION PLAN KEY NOTES	
1	REMOVE EXISTING WINDOW & BRICK SILL, PREPARE OPENING FOR NEW WINDOWS, ENLARGE/FILL OPENING AS REQ'D, SEE ELEVATION
2	REMOVE STORM DOORS
3	REMOVE DOORS, PREPARE OPENINGS FOR NEW DOORS
4	REPAIR & REPLACE WOOD PANELLING, PREPARE FOR NEW FINISH & TRIM AS REQ'D
5	REMOVE PAINT FROM BRICK AND STONE TRIM, TYPICAL
6	REMOVE STONE BASE AND REPLACE WITH STONE BASE TO MATCH FINISH AND DIMENSIONS OF EXISTING STONE BASE AT LEFT SIDE OF FRONT FACADE, SEE ELEVATIONS

DEMO PLAN LEGEND	
	EXISTING PARTITION
	TO BE DEMOLISHED

PLAN LEGEND	
	EXISTING PARTITION
	NEW PARTITION



2 Construction Plan  
1/4" = 1'-0"

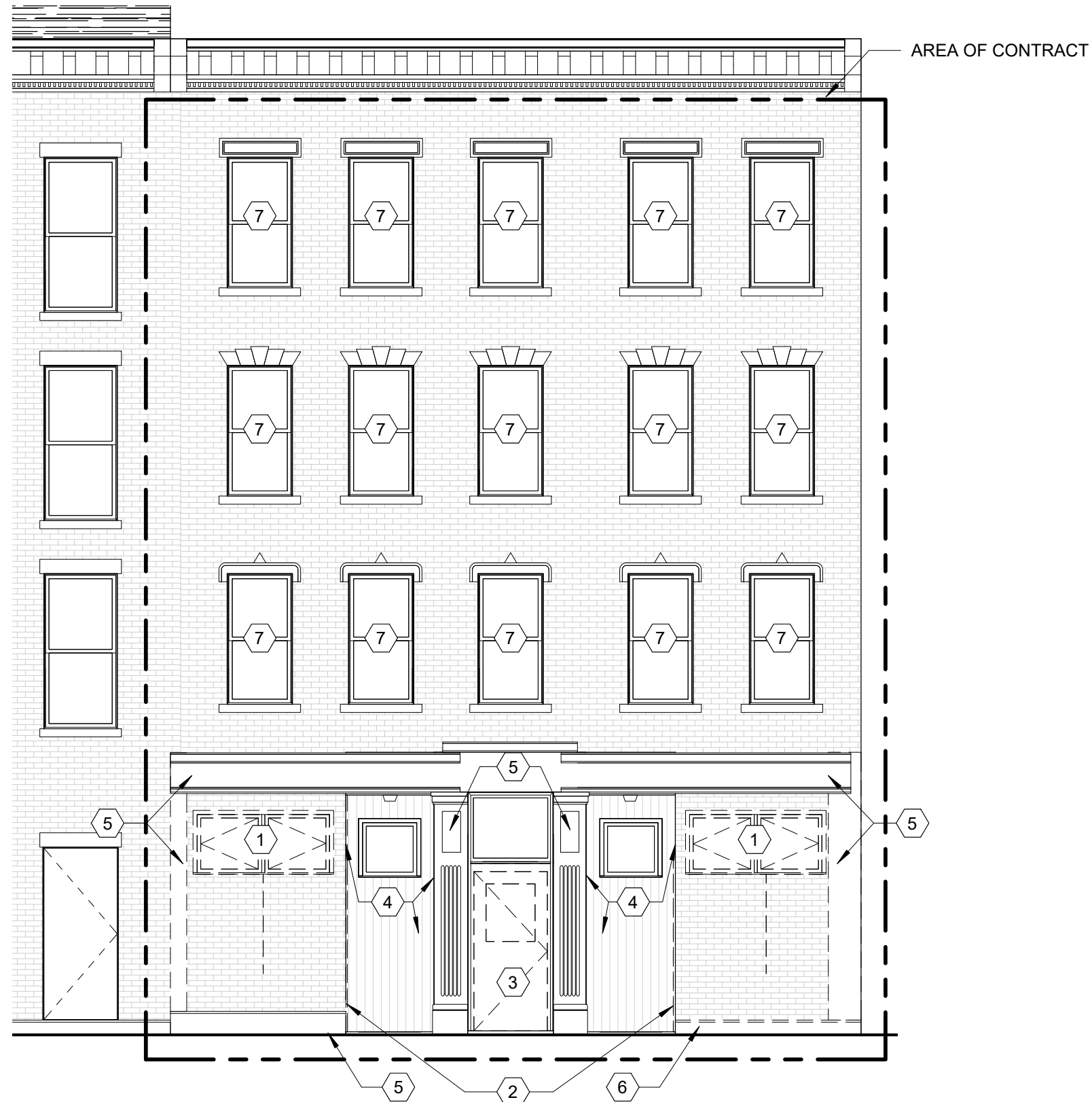
CONSTRUCTION PLAN KEY NOTES	
1	NEW WOOD WINDOW, PAIR OF DOUBLE HUNG W/ 6/6 EXTERIOR APPLIED SIMULATED DIVIDED LITES, PAINTED BLACK. ADD NEW STONE SILL & LINTEL, SILL TO MATCH EXISTING, LINTEL TO MATCH LINTEL OF 4TH FLOOR, SEE ELEVATION & DETAILS
2	NEW DOORS, AS SPECIFIED, SEE ELEVATION
3	ADD PVC OR CEMENTITIOUS TRIM, REFINISH & PAINT, SEE ELEVATION
4	NEW STONE BASE, TO MATCH EXISTING FINISH AND DIMENSIONS, SEE ELEVATION
5	INFILL BRICK AS NECESSARY WITH BRICK, MORTAR, & PATTERN TO MATCH EXISTING

**DEREK RUBINOFF ARCHITECT**  
 82 Spring Street, West Roxbury, MA 02132-4316 617-504-2599 inquiries@derekubinooff.com

**Demolition & Construction Plans**  
 198-202 Warren Ave.  
 198-202 Warren Ave.  
 Boston, MA 02116

JOB #:	1623
SCALE:	As indicated
DATE:	03/14/2018
DWN BY:	CM
CROSS REF:	

**A-101**



DEMOLITION ELEVATION KEY NOTES	
①	REMOVE EXISTING WINDOW & BRICK SILL, PREPARE OPENING FOR NEW WINDOWS, ENLARGE/FILL OPENING AS REQ'D, POWER WASH FRONT FACADE BRICK TO REMAIN
②	REMOVE STORM DOORS
③	REMOVE DOORS, PREPARE OPENINGS FOR NEW DOORS
④	REPAIR & REPLACE WOOD PANNELLING, PREPARE FOR NEW FINISH & TRIM AS REQ'D
⑤	REMOVE PAINT FROM BRICK AND STONE TRIM, TYPICAL
⑥	REMOVE STONE BASE AND REPLACE WITH STONE BASE TO MATCH FINISH AND DIMENSIONS OF EXISTING STONE BASE AT LEFT SIDE OF FRONT FACADE, SEE ELEVATIONS
⑦	REMOVE EXISTING WINDOWS & STORM WINDOWS

① Demolition Front Elevation  
3/16" = 1'-0"

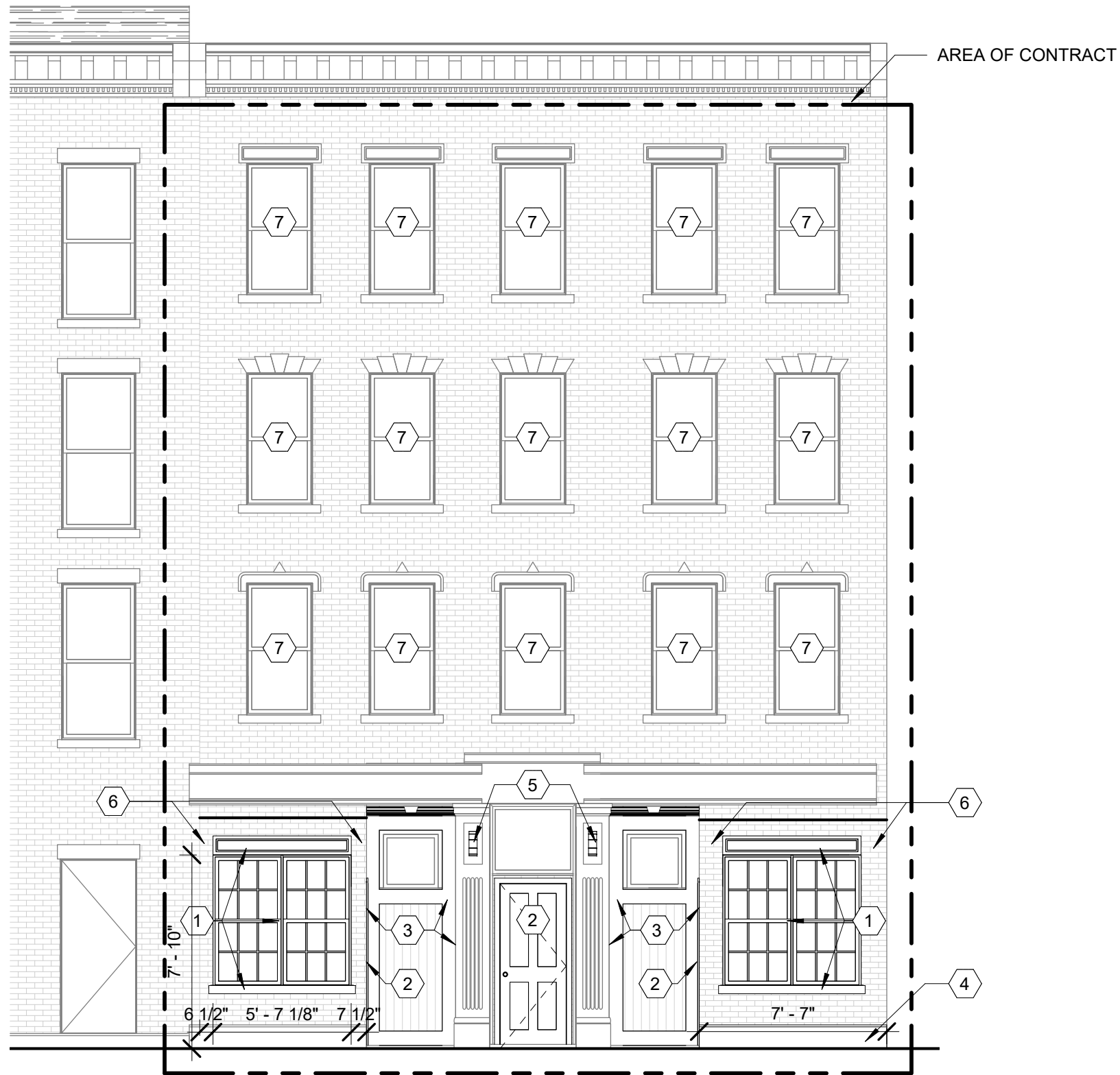
**DEREK RUBINOFF ARCHITECT**  
82 Spring Street, West Roxbury, MA 02132-4316 617-504-2599 inquiries@derekrubinoff.com

Demolition Front Elevation

198-202 Warren Ave.  
198-202 Warren Ave.  
Boston, MA 02116

JOB #:	1623
SCALE:	As indicated
DATE:	03/14/2018
DWN BY:	CM
CROSS REF:	

A-201



### CONSTRUCTION ELEVATION KEY NOTES

- ① NEW WOOD WINDOW, PAIR OF DOUBLE HUNGS W/ 6/6 EXTERIOR APPLIED SIMULATED DIVIDED LITES, PAINTED BLACK. ADD NEW STONE SILL & LINTEL, SILL TO MATCH EXISTING, LINTEL TO MATCH LINTEL OF 4TH FLOOR, SEE ELEVATION & DETAILS
- ② NEW WOOD DOORS, AS SPECIFIED
- ③ ADD PVC OR CEMENTITIOUS TRIM, REFINISH & PAINT, SEE ELEVATION
- ④ NEW STONE BASE, TO MATCH EXISTING FINISH AND DIMENSIONS, SEE ELEVATION
- ⑤ NEW SCONCES, AS SPECIFIED
- ⑥ INFILL BRICK AS NECESSARY WITH BRICK, MORTAR, & PATTERN TO MATCH EXISTING
- ⑦ REPLACE WINDOWS WITH INTERIOR/EXTERIOR WOOD, DOUBLE HUNG, 6/6 EXTERIOR APPLIED SIMULATE DIVIDED LITES, PAINTED BLACK

① Construction Front Elevation  
3/16" = 1'-0"

**DEREK RUBINOFF ARCHITECT**  
82 Spring Street, West Roxbury, MA 02132-4316 617-504-2599 inquiries@derekubinoff.com

### Construction Front Elevation

198-202 Warren Ave.  
198-202 Warren Ave.  
Boston, MA 02116

JOB #:	1623
SCALE:	As indicated
DATE:	03/14/2018
DWN BY:	CM
CROSS REF:	

A-202



**DEREK RUBINOFF ARCHITECT**

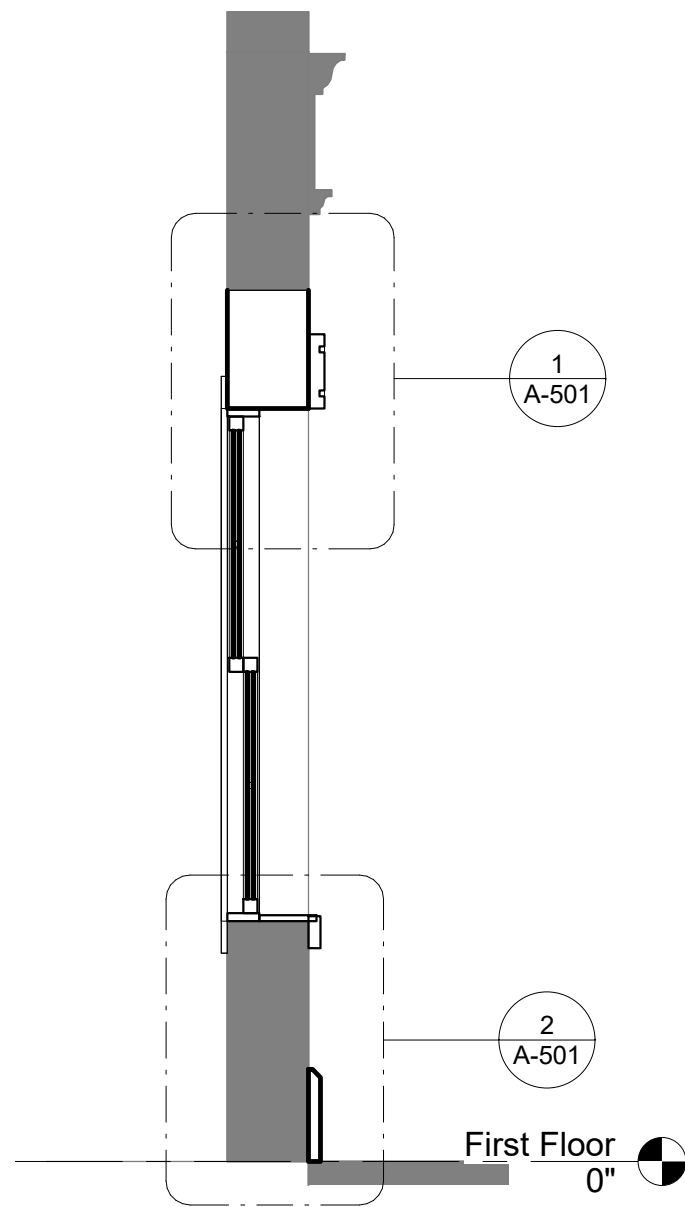
82 Spring Street, West Roxbury, MA 02132-4316 617-504-2599 inquiries@derekubinoff.com

**Rendered Front Elevation**

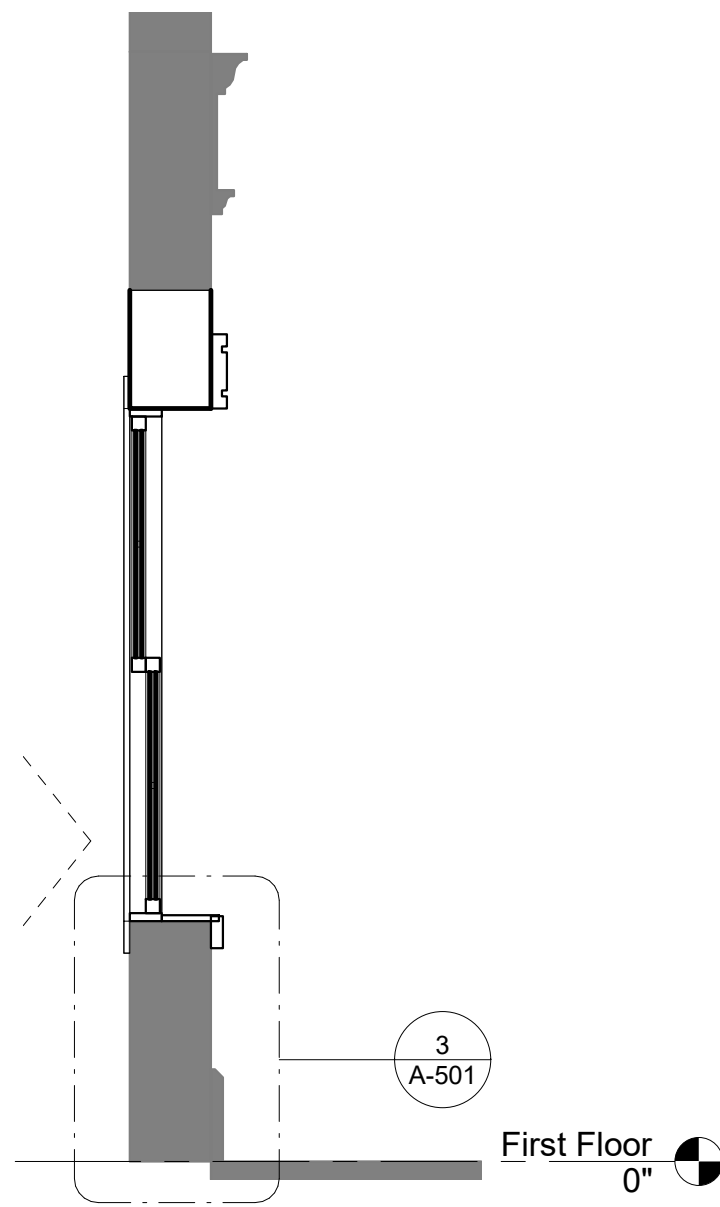
198-202 Warren Ave.  
198-202 Warren Ave.  
Boston, MA 02116

JOB #:	1623
SCALE:	
DATE:	03/14/2018
DWN BY:	CM
CROSS REF:	

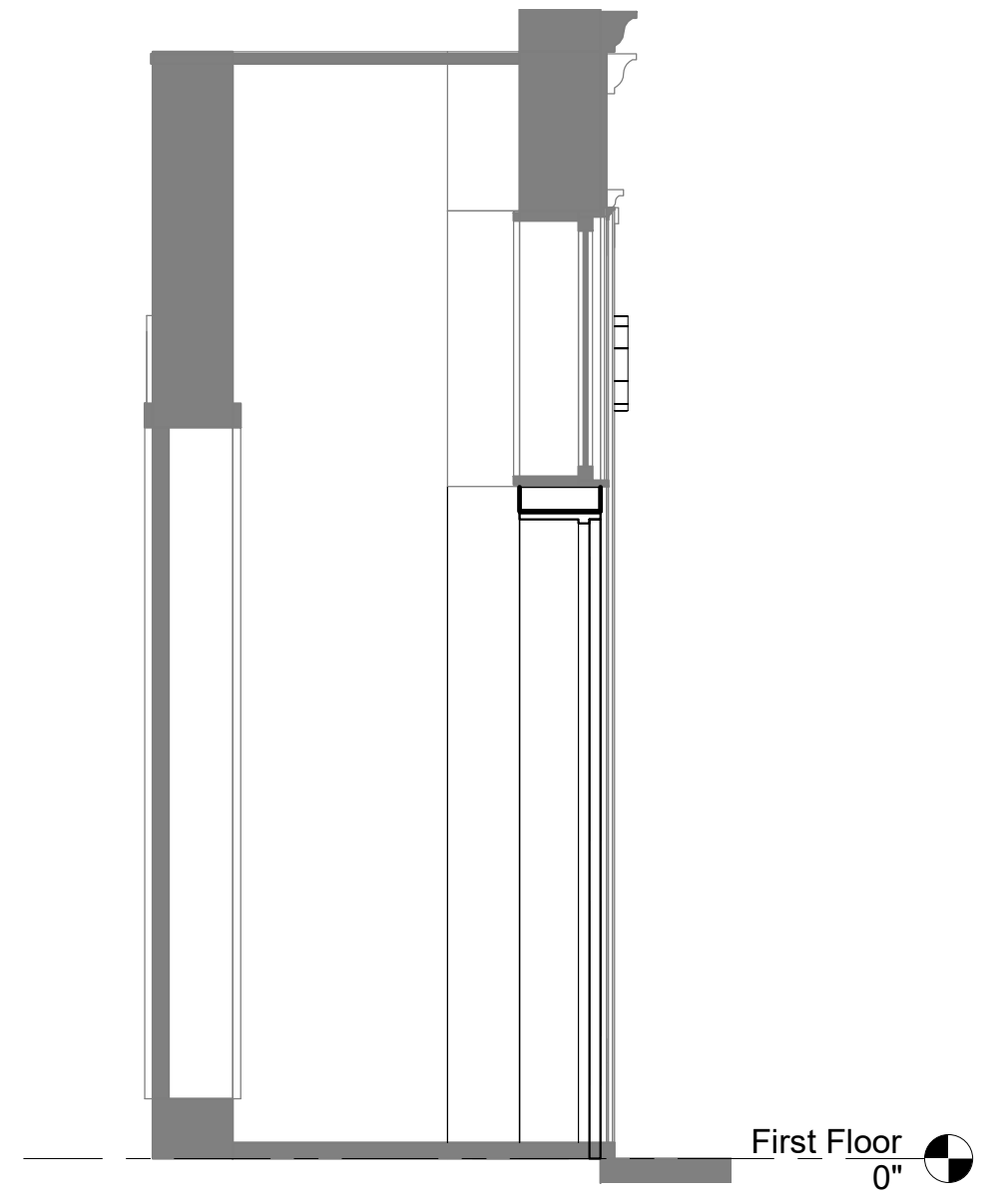
**A-203**



1 Section 1  
1/2" = 1'-0"

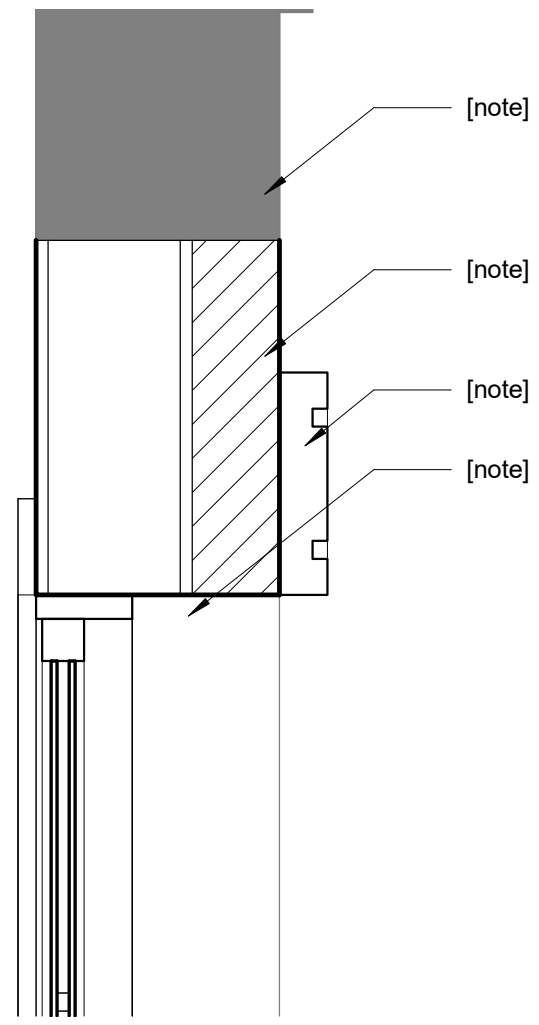


2 Section 2  
1/2" = 1'-0"

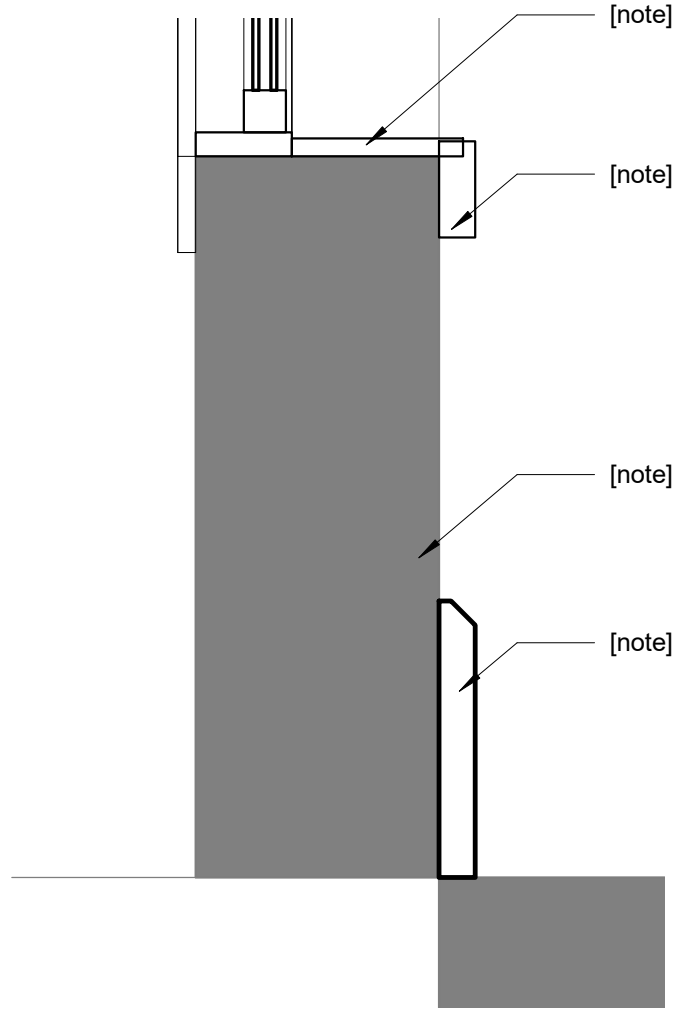


3 Section 3  
1/2" = 1'-0"

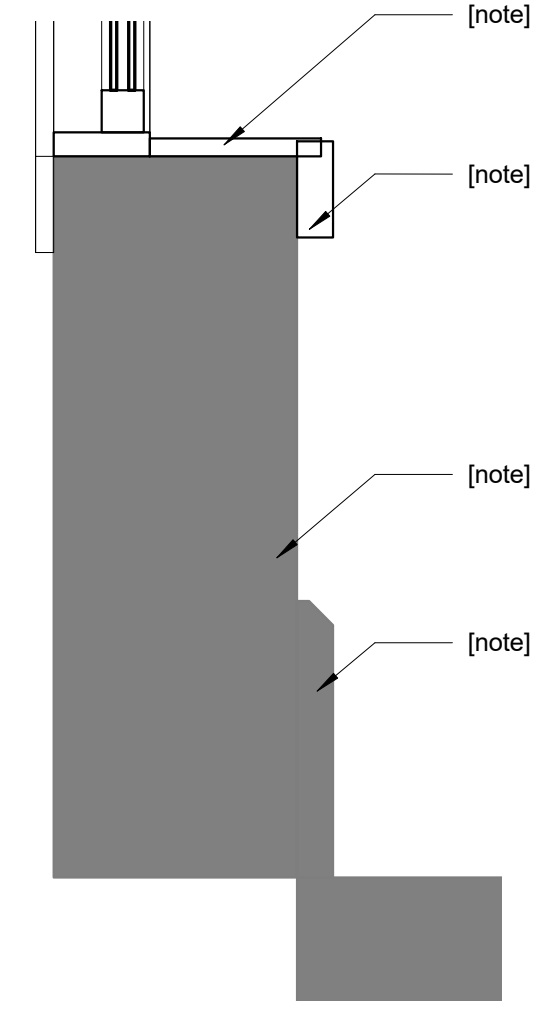
<b>DEREK RUBINOFF ARCHITECT</b> <small>82 Spring Street, West Roxbury, MA 02132-4316 617-504-2599 inquiries@derekubinooff.com</small>	<b>Sections</b> 198-202 Warren Ave. 198-202 Warren Ave. Boston, MA 02116	JOB #: 1623 SCALE: 1/2" = 1'-0" DATE: 03/14/2018 DWN BY: CM CROSS REF:	<b>A-301</b>
	<small>3/20/2018 12:53:02 PM Z:\Jobs\198-202 Warren Ave\REVIT\198-202 Warren Ave_Drawing Set_1.rvt</small>		



① Detail 1  
1 1/2" = 1'-0"



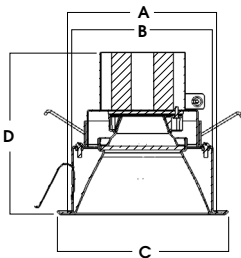
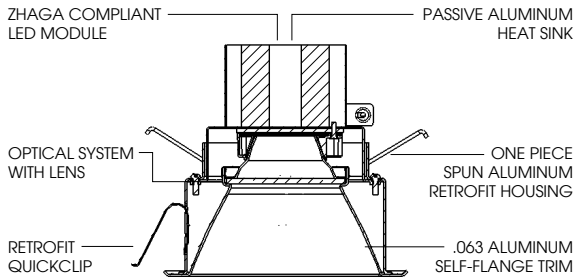
② Detail 2  
1 1/2" = 1'-0"



③ Detail 3  
1 1/2" = 1'-0"

<b>DEREK RUBINOFF ARCHITECT</b> <small>82 Spring Street, West Roxbury, MA 02132-4316 617-504-2599 inquiries@derekubinooff.com</small>	<b>Details</b> 198-202 Warren Ave. 198-202 Warren Ave. Boston, MA 02116		JOB #: 1623 SCALE: 1 1/2" = 1'-0" DATE: 03/14/2018 DWN BY: CM CROSS REF:	<b>A-501</b>





SERIES	A	B	C	D
	HOUSING FLANGE SIZE	HOUSING OD	TRIM FLANGE SIZES	DEPTH
4"	5.0	4.6	5.4	6.2
5"	5.8	5.1	6.3	6.6
6"	7.0	6.2	7.5	7.3
7"	7.5	6.9	8.4	7.3
8"	8.5	7.7	9.1	7.3
9"	9.6	8.6	10.1	7.4
10"	10.6	9.7	11.3	7.4
12"	12.6	11.6	13.1	7.4
14"	14.7	13.8	15.2	7.6

FIT SIZE									
SERIES	4"	5"	6"	7"	8"	9"	10"	12"	14"
MINIMUM	4 <sup>5/8</sup>	5 <sup>1/8</sup>	6 <sup>1/8</sup>	6 <sup>15/16</sup>	7 <sup>3/4</sup>	8 <sup>11/16</sup>	9 <sup>1/16</sup>	11 <sup>11/16</sup>	13 <sup>3/4</sup>
MAXIMUM	4 <sup>7/8</sup>	5 <sup>5/8</sup>	6 <sup>7/16</sup>	7 <sup>1/16</sup>	8 <sup>7/16</sup>	9 <sup>7/16</sup>	10 <sup>9/16</sup>	12 <sup>7/16</sup>	14 <sup>1/2</sup>

### SGRTE-FX - TRIM FLANGE / NON-IC RATED

#### APPLICATIONS

FX series 4"-14" diameter retrofit downlight series. Designed for general downlighting with smooth light distribution.

#### FEATURES

One piece spun housing seals ceiling aperture preventing light leaks. Wide range of apertures. Companion new construction fixtures available. Auto dim thermal protector for long term reliability. Zhaga international standard LED module for ease of maintenance and future replacement. Tool-less LED module and driver access. Includes set of three retrofit clips to accommodate most installations. Goof ring available for oversized or damaged ceiling installations. Fixture will work in up to 1" thick ceiling<sup>1</sup>.

#### FINISH

A variety of architectural powdercoat and anodized finishes are available. Matte White self-flange is standard.

#### ELECTRONICS

LED system features high efficacy PHILIPS LEDs. Standard CRI is >80. Drivers are overload and short circuit protected as well as thermally regulated. Sound rating A. L70 at >60,000 hours.

#### CONSTRUCTION

Housing constructed of .060 aluminum and powdercoated white to resist corrosion. Self-flanged one piece trim spun from 0.063" thick high purity aluminum and finished to specification. Passive machined aluminum heatsink.

#### CODE COMPLIANCE

Energy Star listed and BAA Compliant. Non-IC Rated. ETL certified to meet US and Canadian standards. Optional Wet location listed trim. LM79/LM80 data available. Manufactured and tested to UL standards No. 1598/8750.

#### LUMENS AND WATTAGE CHART

PART NUMBER	SOURCE LUMENS <sup>1</sup>	DELIVERED LUMENS <sup>2</sup>	SYSTEM WATTS	LPW
SGRTE6FX10L	1000	709	9.2	77
SGRTE6FX15L	1500	1081	13.1	83
SGRTE6FX20L	2000	1441	17.0	85
SGRTE6FX30L	3000	2126	25.0	85
SGRTE6FX40L	4000	2871	34.6	83

SERIES	LUMENS <sup>1</sup>	CCT	DRIVER / VOLTAGE <sup>4</sup>	OPTIONS	TRIM	FINISH	TRIM OPTIONS
<b>SGRTE4FX</b>	<b>10L</b> 1000 Lm	<b>27K</b> 2700K	<b>DX</b> 1%, 0-10V, 120V/277V	<b>EM</b> Integral Emergency Battery	<b>AR4223FX</b>	<b>MW</b> Matte White	<b>SO</b> <sup>7</sup> Micro Prism
<b>SGRTE5FX</b>	<b>15L</b> <sup>3</sup> 1500 Lm	<b>30K</b> 3000K		<b>EMRM</b> <sup>5</sup> Remote Emergency Battery Pack	<b>AR5223FX</b>	<b>MB</b> Matte Black	Solite™ Lens
<b>SGRTE6FX</b>	<b>20L</b> 2000 Lm	<b>35K</b> 3500K		<b>FS</b> Fusing	<b>AR6223FX</b>	<b>SG</b> Semi-Diffuse	
<b>SGRTE7FX</b>	<b>30L</b> 3000 Lm	<b>40K</b> 4000K		<b>CR</b> Corrosion Resistant	<b>AR7223FX</b>	<b>PT</b> Platinum Silver	<b>SOW</b> Micro Prism
<b>SGRTE8FX</b>	<b>40L</b> 4000 Lm				<b>AR8223FX</b>	<b>CC</b> <sup>6</sup> Custom Color	Solite™ Lens
<b>SGRTE9FX</b>					<b>AR9223FX</b>		Wet Location
<b>SGRTE10FX</b>					<b>AR1023FX</b>		
<b>SGRTE12FX</b>					<b>AR1223FX</b>		
<b>SGRTE14FX</b>					<b>AR1423FX</b>		

**EXAMPLE:** SGRTE6FX30L30KDX/AR6223FXMWSO

#### NOTES:

1 Nominal Source Lumens at 3500K 2 Nominal Delivered Lumens at 3500K with MW-SO Trim 3 Energy Star Pending for 15L 4 Contact Factory for Additional Options 5 Installer Responsible for EM Access 6 See Color Page for More Options/Consult Factory for Special Finishes 7 Standard Lens



Dimensions and values shown are nominal. Spectrum Lighting continually works to improve products and reserves the right to make changes which may alter the performance or appearance of products.



<b>PROJECT:</b>	<b>TYPE:</b>
<b>CAT. NO.:</b>	



## PROJECT

Job _____	Notes
Type _____	
Part # _____	

## SPECIFICATIONS

- Source Xicato XTM LED module - up to 3000 lumens
- C.C.T. 2700K, 3000K, 3500K or 4000K
- Color Consistency 1x2 SDCM (MacAdam) along BBL, CCT +/- 40K to 70K, Duv +/- .001
- CRI (Ra) 83 or 98
- Driver / Location Included / Internal with remote or deep canopy options
- Dimming 0-10V or phase dimming to 10% standard; DALI, DMX and 1% dimming available
- Input Voltage 100 to 277VAC, phase dimmable versions are 120VAC only
- Power Up to 36 watts max, depending on LED module / driver
- Reflector 20°, 40° or 60° - field replaceable without tools
- Material CNC machined aluminum with stainless steel hardware
- Finish Powder coat - TGIC polyester for exterior and interior use
- Weight 5 lb. [2.3 kg]
- Location Listed for Wet & Damp locations
- Approvals ETL Listed to UL 1598, 2108, 8750 and CSA C22.2# 9 & #250.0
- L80 Life > 50,000 hours at 80% lumen maintenance based on IESNA LM-80-08
- Warranty Lifetime Limited Warranty - see warranty for details
- IES Files LM-79-08 IES files available at [www.v2LightingGroup.com/downloads](http://www.v2LightingGroup.com/downloads)
- Modifications Any modification or customization is possible - consult factory



## ORDERING LOGIC

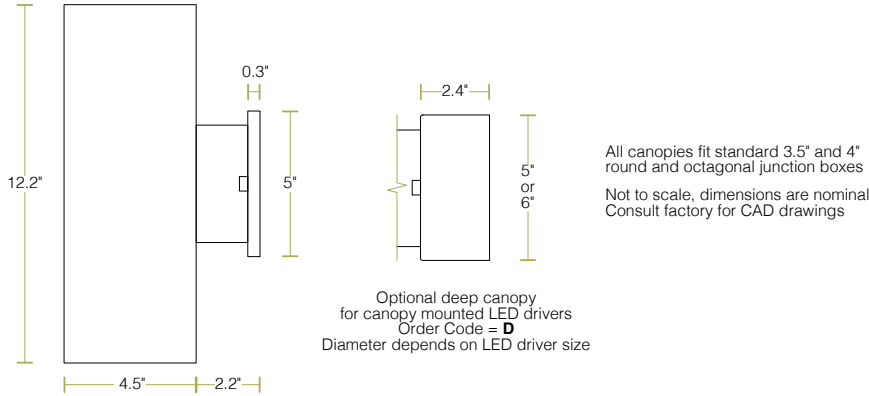
Driver		Mounting		Output	CRI *	C.C.T.	Reflector	Shell Color	Options
Location	Dimming	Location	Location						
<b>C3LS</b>									<b>T4 - Textured Matte Black</b>
N=Internal R=Remote D=Deep Canopy	N=None P=Phase V=0-10V Z=Other	D=Damp W=Wet		07=700 lm 10=950 lm 13=1300 lm 20=2000 lm 30=3000 lm	83=83 98=98*	27=2700K 30=3000K 35=3500K 40=4000K	20=20° 40=40° 60=60°	XX (see chart on page 4) ZZ=Custom	

\* 98 CRI not available in 3000 lm

Example Part Number: **C3LS-NND-20832740-S3**

**CORE 300 LX Sconce** - Internal Driver, No Dimming, Damp Location - 2000 lm, 83 CRI, 2700K, 40° Reflector - S3 Red Shell

## DIMENSIONS



## LED OPTIONS

Reflector Option	LES <sup>1</sup>	CRI	LED Specifications		
			Lumens <sup>2,3,4</sup>	Wattage <sup>5</sup> (W)	Efficacy <sup>6</sup> (lm/W)
20°, 40° & 60°	19mm	Ra = 83 ± 3	700	5.6	129
			950	8.2	118
			1300	11.7	111
			2000	19.5	102
		Ra = 98 R9 ≥ 90 R15 ≥ 95	700	7.4	97
			950	10.9	89
			1300	15.6	83
			2000	26.4	76

<sup>1</sup> LES: Light Emitting Surface diameter  
<sup>2</sup> ±10%  
<sup>3</sup> Source lumens - see photometrics on page 3 for LOR to calculate delivered lumens  
<sup>4</sup> Higher lumen outputs are available in CORE / QUBE 400 series  
<sup>5</sup> Maximum luminaire wattage including LED driver = LED wattage x 1.2  
<sup>6</sup> Higher efficacies are available via lower drive currents - consult factory

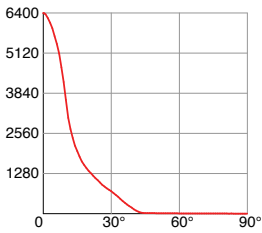
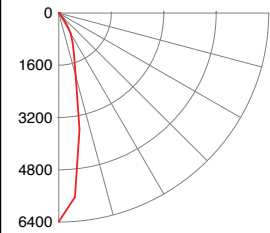
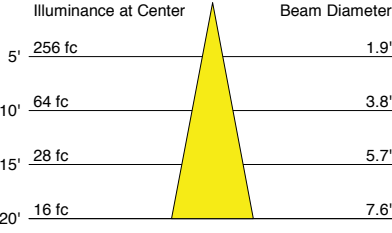
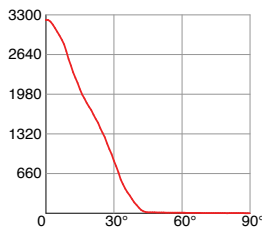
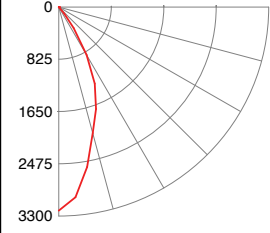
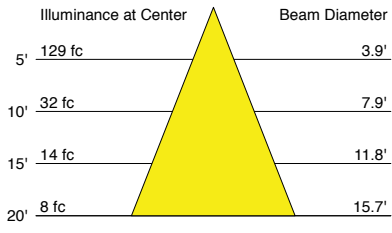
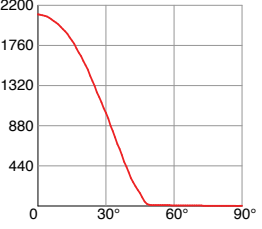
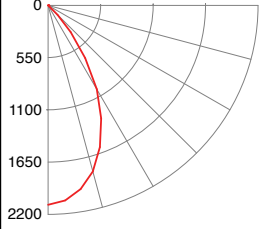
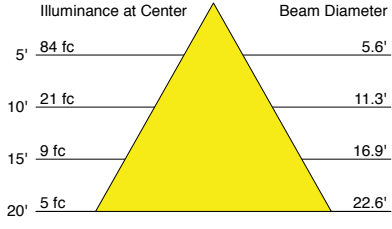
## CONTROL OPTIONS

Standard LED Drivers* (included in base price)	Order Code <b>V</b> = 0-10V dimming to 10% Order Code <b>P</b> = Phase dimming to 10% Compatible with both forward and reverse phase dimmers
Optional LED Drivers*	eldoLED 0-10V, DALI, or DMX dimming to 0% Lutron Hi-lume™ A-series, EcoSystem or forward phase dimming to 1% Lutron Hi-lume™ 5-series, EcoSystem dimming to 5%

\* Standard LED drivers are suitable for Wet Location  
 \* Optional LED drivers are suitable for Damp Location  
 \* For EM applications:  
 All LED drivers may be used with 3rd party inverter style systems

## PHOTOMETRICS

LM-79-08 IES files available at [www.v2LightingGroup.com/downloads](http://www.v2LightingGroup.com/downloads)

Beam Angle	Order Code	Intensity Plot (cd) (2000lm)	Polar Plot (cd) (2000lm)	Cone Diagram (2000lm)	Description															
20°	<b>20</b>			 <table border="1"> <thead> <tr> <th>Distance</th> <th>Illuminance at Center</th> <th>Beam Diameter</th> </tr> </thead> <tbody> <tr> <td>5'</td> <td>256 fc</td> <td>1.9'</td> </tr> <tr> <td>10'</td> <td>64 fc</td> <td>3.8'</td> </tr> <tr> <td>15'</td> <td>28 fc</td> <td>5.7'</td> </tr> <tr> <td>20'</td> <td>16 fc</td> <td>7.6'</td> </tr> </tbody> </table>	Distance	Illuminance at Center	Beam Diameter	5'	256 fc	1.9'	10'	64 fc	3.8'	15'	28 fc	5.7'	20'	16 fc	7.6'	CBCP = 3195 cd/klm Beam Angle = 21° Field Angle = 63° LOR = 89.4 % Beam = full width @ 50% Field = full width @ 90%
Distance	Illuminance at Center	Beam Diameter																		
5'	256 fc	1.9'																		
10'	64 fc	3.8'																		
15'	28 fc	5.7'																		
20'	16 fc	7.6'																		
40°	<b>40</b>			 <table border="1"> <thead> <tr> <th>Distance</th> <th>Illuminance at Center</th> <th>Beam Diameter</th> </tr> </thead> <tbody> <tr> <td>5'</td> <td>129 fc</td> <td>3.9'</td> </tr> <tr> <td>10'</td> <td>32 fc</td> <td>7.9'</td> </tr> <tr> <td>15'</td> <td>14 fc</td> <td>11.8'</td> </tr> <tr> <td>20'</td> <td>8 fc</td> <td>15.7'</td> </tr> </tbody> </table>	Distance	Illuminance at Center	Beam Diameter	5'	129 fc	3.9'	10'	32 fc	7.9'	15'	14 fc	11.8'	20'	8 fc	15.7'	CBCP = 1607 cd/klm Beam Angle = 43° Field Angle = 73° LOR = 88.7 % Beam = full width @ 50% Field = full width @ 90%
Distance	Illuminance at Center	Beam Diameter																		
5'	129 fc	3.9'																		
10'	32 fc	7.9'																		
15'	14 fc	11.8'																		
20'	8 fc	15.7'																		
60°	<b>60</b>			 <table border="1"> <thead> <tr> <th>Distance</th> <th>Illuminance at Center</th> <th>Beam Diameter</th> </tr> </thead> <tbody> <tr> <td>5'</td> <td>84 fc</td> <td>5.6'</td> </tr> <tr> <td>10'</td> <td>21 fc</td> <td>11.3'</td> </tr> <tr> <td>15'</td> <td>9 fc</td> <td>16.9'</td> </tr> <tr> <td>20'</td> <td>5 fc</td> <td>22.6'</td> </tr> </tbody> </table>	Distance	Illuminance at Center	Beam Diameter	5'	84 fc	5.6'	10'	21 fc	11.3'	15'	9 fc	16.9'	20'	5 fc	22.6'	CBCP = 1050 cd/klm Beam Angle = 59° Field Angle = 86° LOR = 85.2 % Beam = full width @ 50% Field = full width @ 90%
Distance	Illuminance at Center	Beam Diameter																		
5'	84 fc	5.6'																		
10'	21 fc	11.3'																		
15'	9 fc	16.9'																		
20'	5 fc	22.6'																		

### Beam Shaping Options

Add the order code shown below to the options box at the end of the part number:

Order Code	Description
<b>-HL</b>	Honeycomb Louver
<b>-DF</b>	Diffusion Lens
<b>-SF</b>	Satin finish on any standard reflector
<b>-LS</b>	Linear Spread Lens (60° x 1°)
<b>-WW</b>	Wall Wash Lens (shifts beam 20° from vertical)

## COLOR OPTIONS

### Anodized Effect



**A1**  
Clear Silver



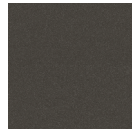
**A2**  
Champagne



**A3**  
Light Bronze



**A4**  
Medium Bronze



**A5**  
Dark Bronze



**A6**  
Black

### Metallic



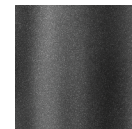
**M1**  
Pearl



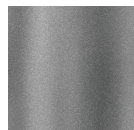
**M2**  
Sea Foam



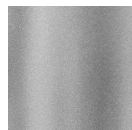
**M3**  
Forest Gray



**M4**  
Charcoal Gray



**M5**  
Gunmetal Gray



**M6**  
Dove Gray



**M7**  
Old Copper



**M8**  
Old Brass

### Basic



**L1**  
Gloss White



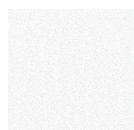
**L2**  
Gloss Light Gray



**L3**  
Gloss Dark Gray



**L4**  
Gloss Black



**T1**  
Textured Matte White



**T2**  
Textured Matte Light Gray



**T3**  
Textured Metallic Dark Gray



**T4**  
Textured Matte Black

### Sparkle



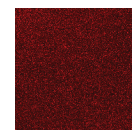
**S1**  
Light Orange



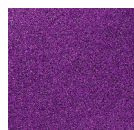
**S2**  
Deep Orange



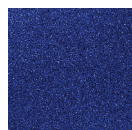
**S3**  
Red



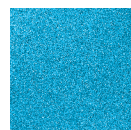
**S4**  
Burgundy



**S5**  
Violet



**S6**  
Deep Blue



**S7**  
Sky Blue



**S8**  
Bright Green

The complete range of powder coat colors from Tiger Drylac is available - consult factory  
 Custom match powder coat colors are available - consult factory  
 Printed or on-screen colors are only approximations - consult v2 Color Chip Set Rev.4 before specifying