

# 361 Beacon Street

Boston Massachusetts

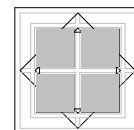
## ZONING SUMMARY (PROPOSED)

H-3-65	ALLOWED:	ACTUAL:
LOT SIZE		3136 SF
FRONT SETBACK	20.0'	22.0'
SIDE SETBACK	NA	NA
REAR SETBACK	28'	28.8'
MIN. OPEN SPACE	250 (50SF X 5 UNITS)	1388 SF
BUILDING HEIGHT	65'	64.25'
FAR 2.4	9408 SF (3136 X 3)	8525 SF
PARKING SPACES	3 (.6 PER UNIT x 5 UNITS)	5

December 13, 2017

**MEYER & MEYER, INC.**  
ARCHITECTURE ◦ INTERIORS

396 COMMONWEALTH AVENUE BOSTON, MASSACHUSETTS 02215



MMXVII

**EXISTING LEGEND**

—SS—	SEWER LINE
⊙	SEWER MANHOLE
—V—	WATER LINE
—G—	GAS LINE
⊕	UTILITY POLE
⊗	GAS VALVE
—E—	OVERHEAD ELECTRIC SERVICE
⊕	WATER VALVE
□	CATCH BASIN
○	FENCE
—205—	CONTOUR LINE (MJR)
—195—	CONTOUR LINE (MNR)
X	SPOT GRADE
⊕	DRAIN MANHOLE
⊕	HYDRANT
⊕	TREE

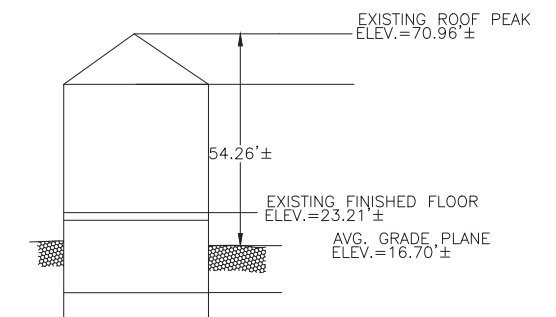
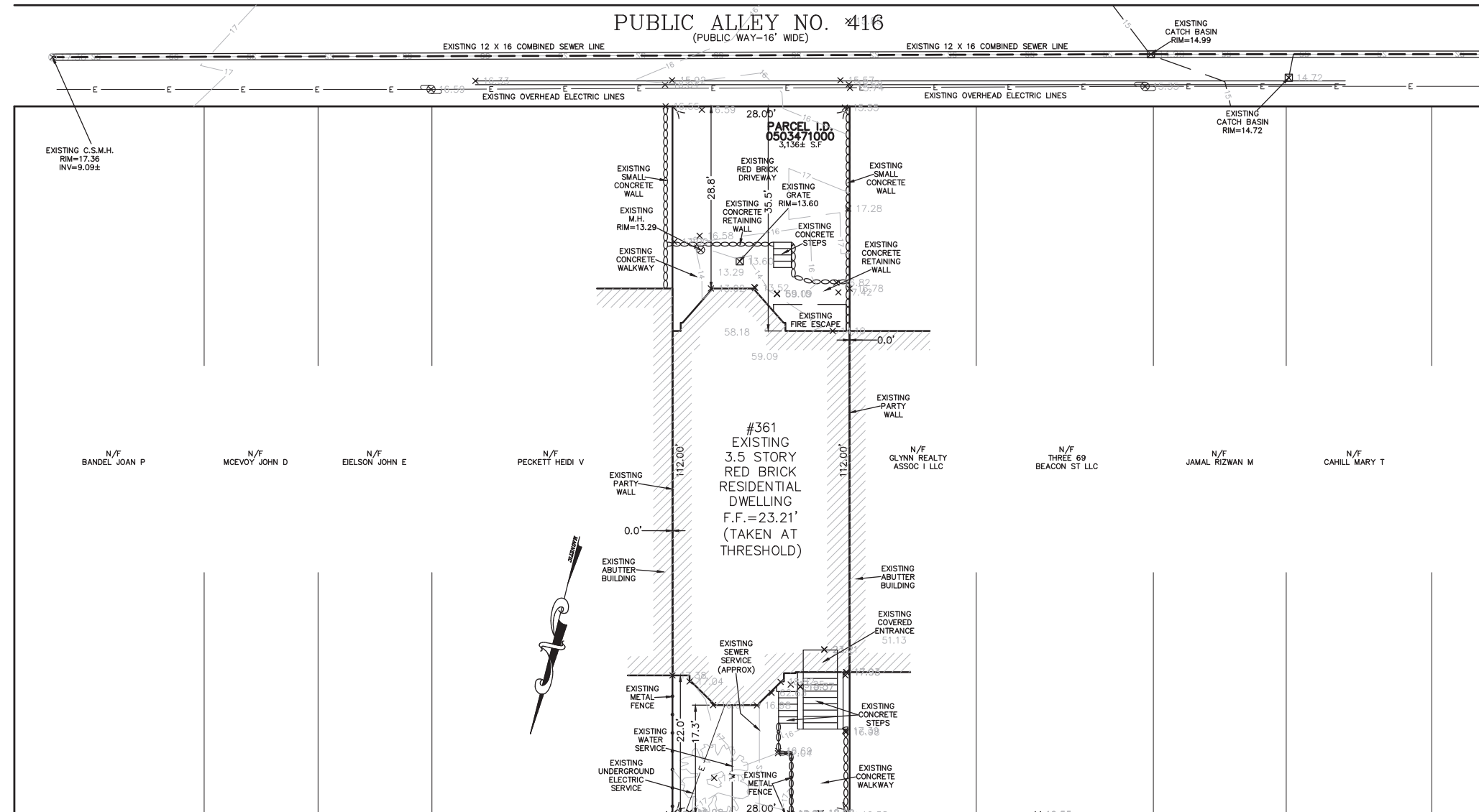
**ZONING LEGEND**

ZONING DISTRICT: H-3-65 (APARTMENT RESIDENTIAL)			
	REQUIRED	EXISTING	
MIN. AREA	—	—	
MIN. FRONTAGE	50'	28'	
MIN. YARD FRONT	20'	17.3'	
	SIDE	12.7'	0.0'
	REAR	28'	28.8'
REAR YARD OCC.	40%	0.0%	
USABLE OPEN SPACE PER DWELLING UNIT	50 S.F.	502.72 S.F. ±	
MIN. LOT WIDTH	—	—	
MAX. BLDG. HEIGHT	65'	54.26'±	
MAX. STORIES	—	—	
MAX. F.A.R.	3.0	—	

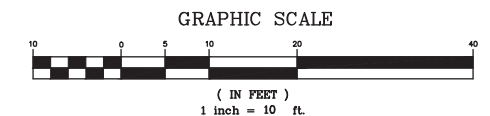
NOTES:

1. INFORMATION SHOWN ON THIS PLAN IS THE RESULT OF A FIELD SURVEY PERFORMED BY PETER NOLAN & ASSOCIATES LLC AS OF 8-15-2017.
2. DEED REFERENCE BOOK 13652 PAGE 54, SUFFOLK COUNTY REGISTRY OF DEEDS.
3. THIS PLAN IS NOT INTENDED TO BE RECORDED.
4. I CERTIFY THAT THE DWELLING SHOWN IS NOT LOCATED WITHIN A SPECIAL FLOOD HAZARD ZONE. IT IS LOCATED IN ZONE X, ON FLOOD HAZARD BOUNDARY MAP NUMBER 25025C0077J, PANEL NUMBER 0077J, COMMUNITY NUMBER: 250286, DATED MARCH 16, 2016.
5. THIS PLAN DOES NOT SHOW ANY UNRECORDED OR UNWRITTEN EASEMENTS WHICH MAY EXIST. A REASONABLE AND DILIGENT ATTEMPT HAS BEEN MADE TO OBSERVE ANY APPARENT USES OF THE LAND; HOWEVER THIS NOT CONSTITUTE A GUARANTEE THAN NO SUCH EASEMENTS EXIST.
6. FIRST FLOOR ELEVATIONS ARE TAKEN AT THRESHOLD.
7. NO RESPONSIBILITY IS TAKEN FOR ZONING TABLE AS PETER NOLAN & ASSOCIATES LLC ARE NOT ZONING EXPERTS. TABLE IS TAKEN FROM TABLE PROVIDED BY LOCAL ZONING ORDINANCE. CLIENT AND/OR ARCHITECT TO VERIFY THE ACCURACY OF ZONING ANALYSIS.

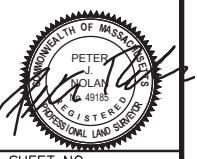
**PUBLIC ALLEY NO. #416**  
(PUBLIC WAY-16' WIDE)



**EXISTING PROFILE**  
NOT TO SCALE



SCALE	1"=10'		
DATE	8/16/2017		
REV	DATE	REVISION	BY
SHEET	1		
PLAN NO.	1 OF 1		
CLIENT:	361 BEACON STREET BOSTON MASSACHUSETTS EXISTING CONDITIONS SITE PLAN		
DRAWN BY	PETER NOLAN & ASSOCIATES LLC LAND SURVEYORS/CIVIL ENGINEERING CONSULTANTS 697 CAMBRIDGE STREET, SUITE 103 BRIGHTON MA 02135 PHONE: 857 891 7478/617 782 1533 FAX: 617 202 5691 EMAIL: pnolan@pnasurveyors.com		
CHKD BY	P.J.N.		
APPD BY	P.J.N.		



SHEET NO.

**1**



361 Beacon Street

# 361 Beacon Street

Boston • Massachusetts

September 19, 2017

## Block Plan

NOT TO SCALE

MEYER and MEYER  
I N C.  
ARCHITECTURE & INTERIORS

396 Commonwealth Avenue  
Boston Massachusetts 02215  
617 266 0555  
www.meyerandmeyerarchitects.com

© 2015 Meyer & Meyer, Inc. - All Rights Reserved



View Looking Southeast



View Looking Southwest

# 361 Beacon Street

Boston • Massachusetts

September 19, 2017

## Beacon Street Views

NOT TO SCALE

MEYER and MEYER  
I N C.  
ARCHITECTURE & INTERIORS

396 Commonwealth Avenue  
Boston Massachusetts 02215  
617 266 0555  
www.meyerandmeyerarchitects.com



# 361 Beacon Street

Boston • Massachusetts

September 19, 2017

## Public Alley 416

NOT TO SCALE

MEYER and MEYER  
I N C.  
ARCHITECTURE & INTERIORS

396 Commonwealth Avenue  
Boston, Massachusetts 02215  
617 266 0555  
www.meyerandmeyerarchitects.com



Front



Rear

# 361 Beacon Street

Boston • Massachusetts

September 19, 2017

## Existing Elevation Photos

NOT TO SCALE

MEYER and MEYER  
I N C.  
ARCHITECTURE & INTERIORS

396 Commonwealth Avenue  
Boston Massachusetts 02215  
617 266 0555  
www.meyerandmeyerarchitects.com



View of Existing Dormer/Front of Roof Looking East



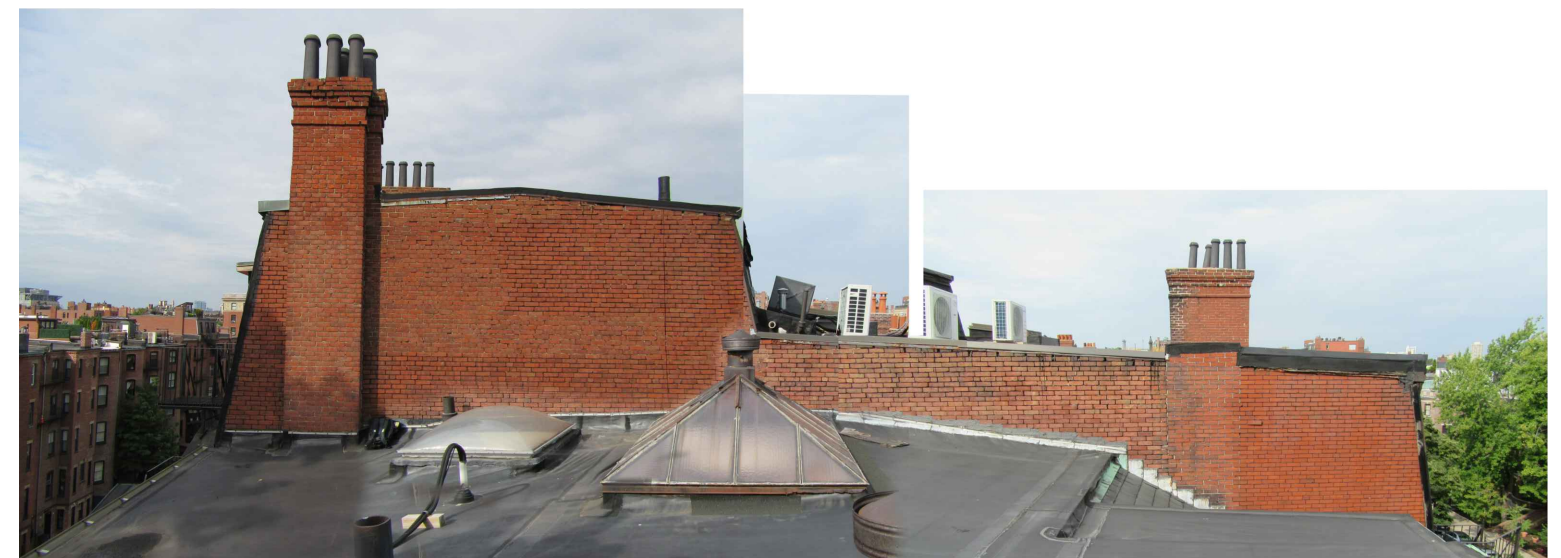
View Looking North



View Looking South



View Looking East



View Looking West

361 Beacon Street

Boston • Massachusetts

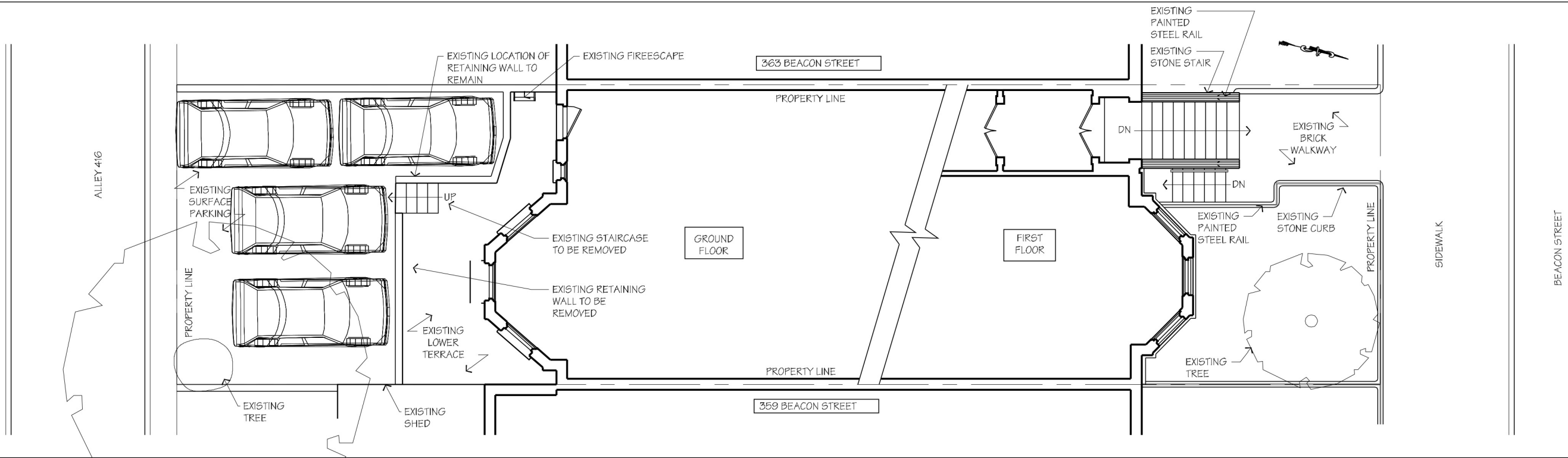
September 19, 2017

## Roof Views

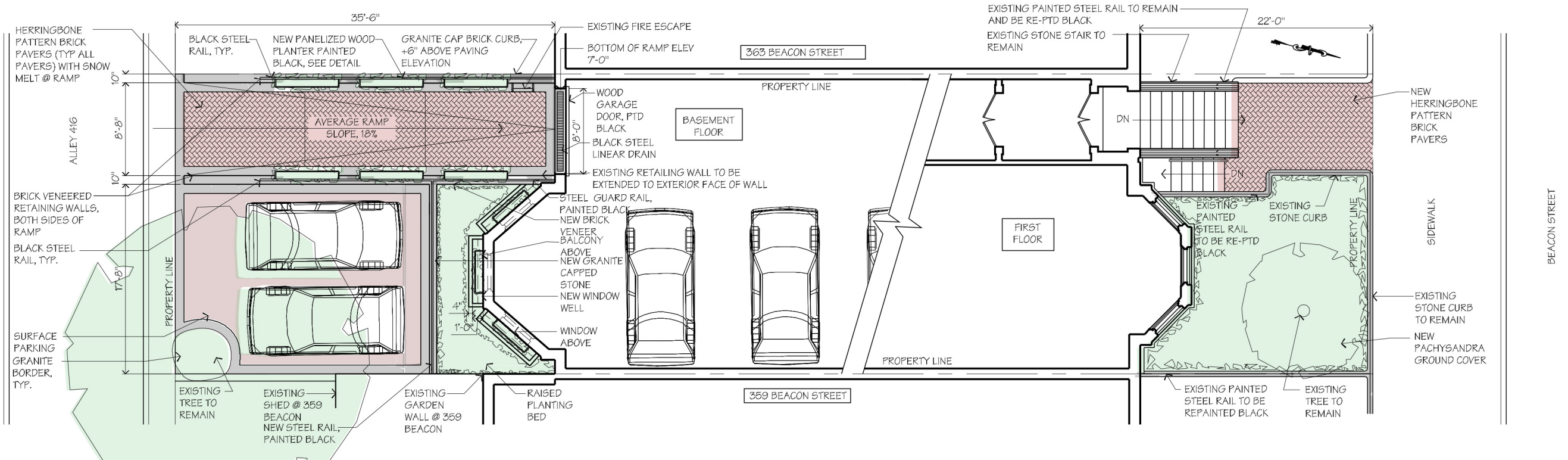
NOT TO SCALE

MEYER and MEYER  
I N C.  
ARCHITECTURE & INTERIORS

396 Commonwealth Avenue  
Boston Massachusetts 02215  
617 266 0555  
www.meyerandmeyerarchitects.com



Existing



Proposed

# 361 Beacon Street

Boston • Massachusetts

December 13, 2017

# Site Plan

Scale: 3/32" = 1'-0"

**MEYER and MEYER**  
I N C.

ARCHITECTURE & INTERIORS

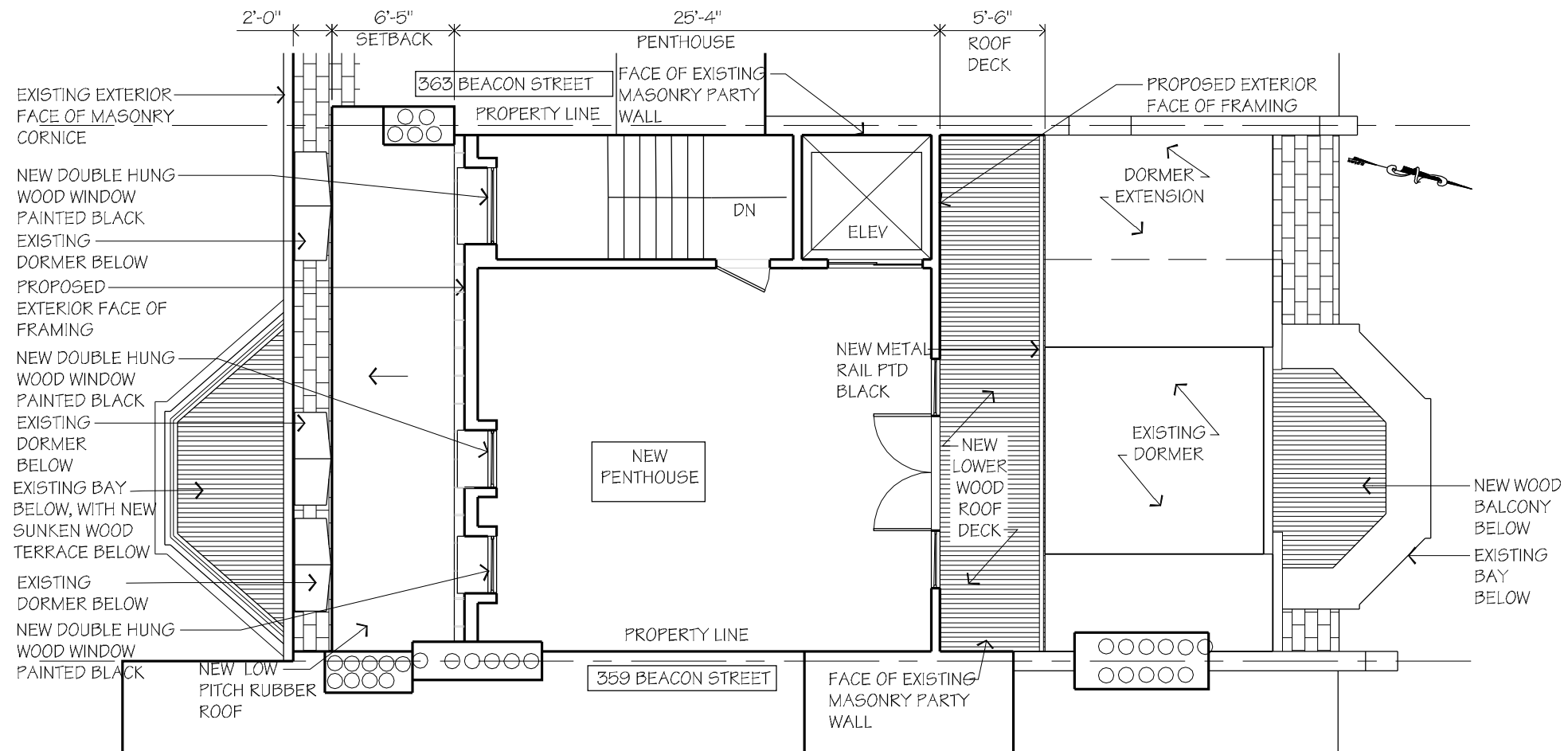
396 Commonwealth Avenue

Boston Massachusetts 02215

617 266 0555

www.meyerandmeyerarchitects.com





Proposed

# 361 Beacon Street

Boston • Massachusetts

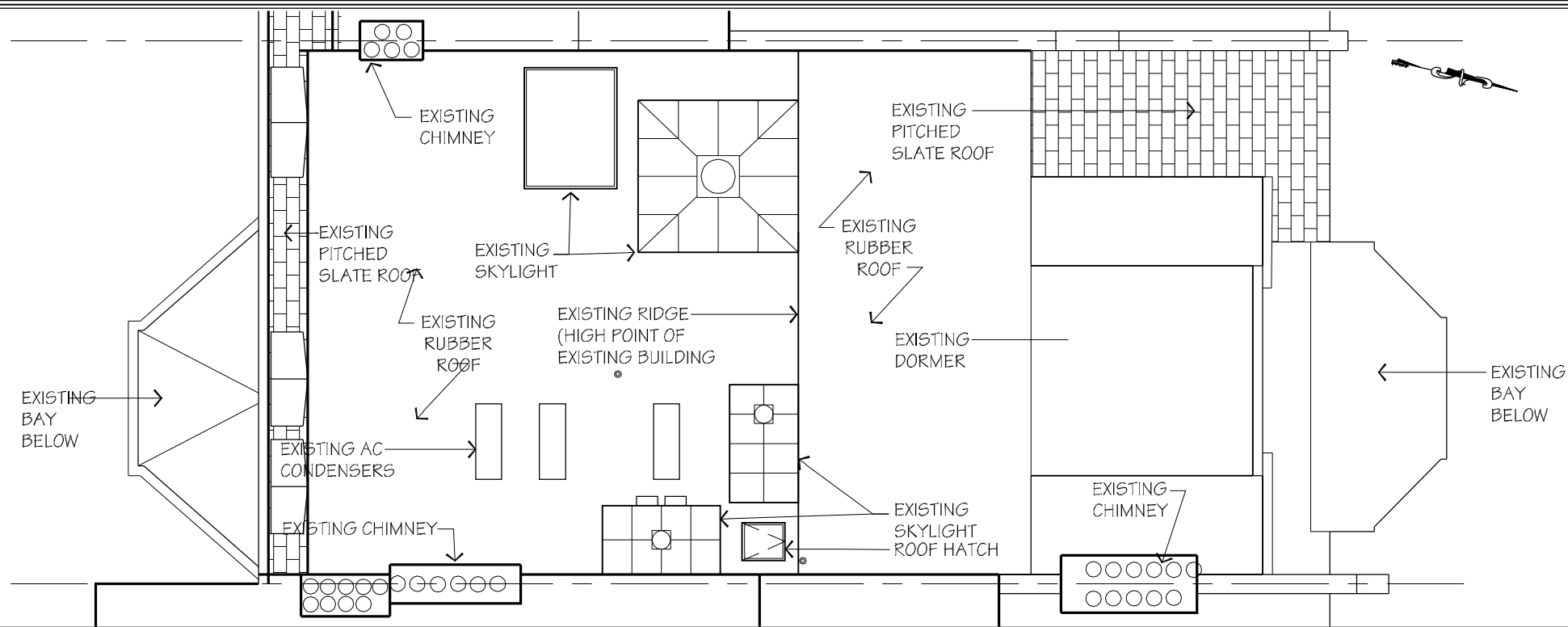
December 13, 2017

# Penthouse Plan

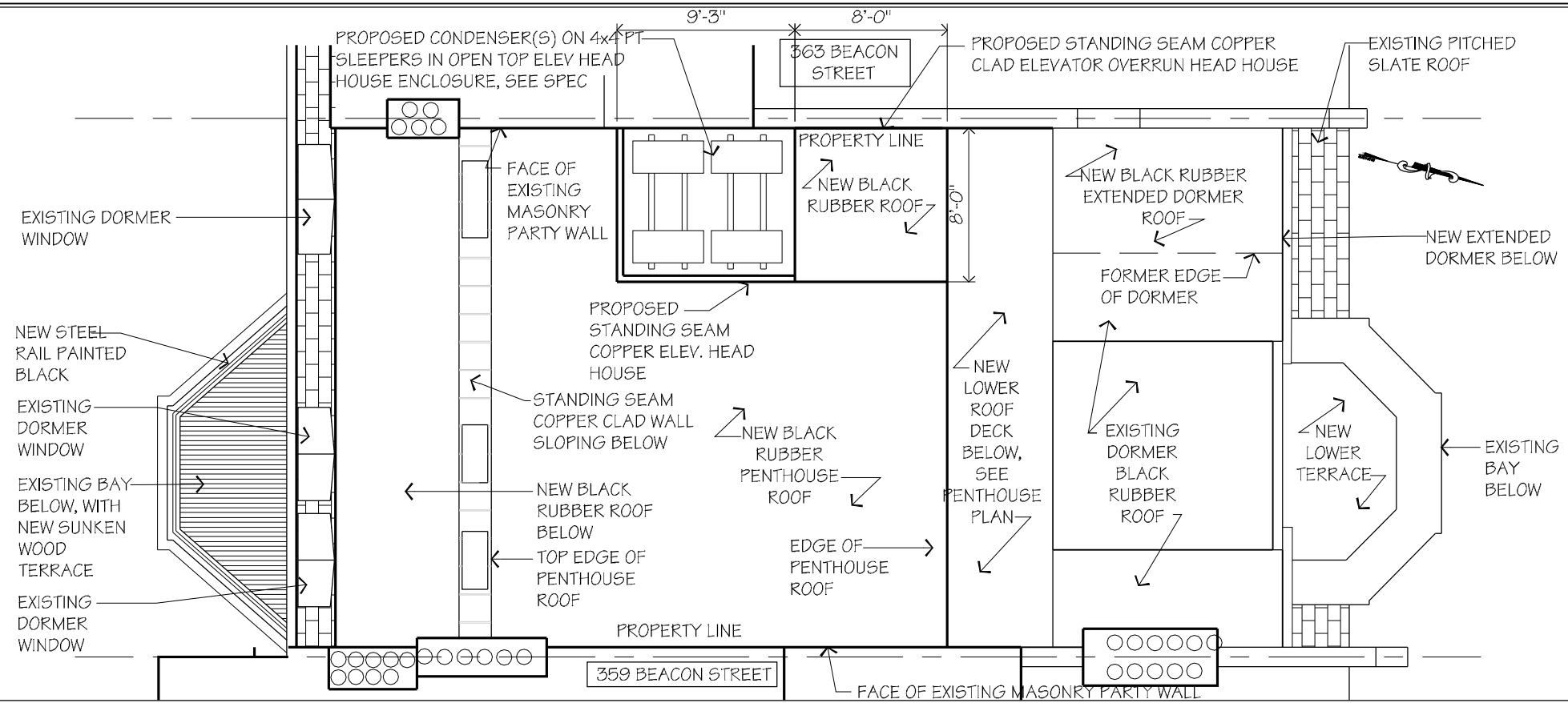
Scale: 1/8" = 1'-0"

**MEYER and MEYER**  
I N C.  
ARCHITECTURE & INTERIORS

396 Commonwealth Avenue  
Boston, Massachusetts 02215  
617 266 0555  
www.meyerandmeyerarchitects.com



Existing



Proposed

# 361 Beacon Street

Boston • Massachusetts

December 13, 2017

# Roof Plans

Scale: 1/8" = 1'-0"

MEYER and MEYER

I N C.

ARCHITECTURE & INTERIORS

396 Commonwealth Avenue  
Boston, Massachusetts 02215  
617 266 0555

www.meyerandmeyerarchitects.com

© 2016 Meyer & Meyer, Inc. All Rights Reserved



EXISTING SKYLIGHTS  
TO BE REMOVED

EXISTING PITCHED  
RUBBER ROOF TO BE  
REMOVED, SEE  
SECTION

REMOVE EXISTING  
WINDOW

REMOVE EXISTING  
COPPER GUTTERS

REMOVE EXISTING  
FLUTED LEADER

ROOF

FOURTH FLOOR

THIRD FLOOR

SECOND FLOOR

FIRST FLOOR

AVERAGE GRADE

BASEMENT FLOOR

Existing

361 Beacon Street

Boston • Massachusetts

October 11, 2017

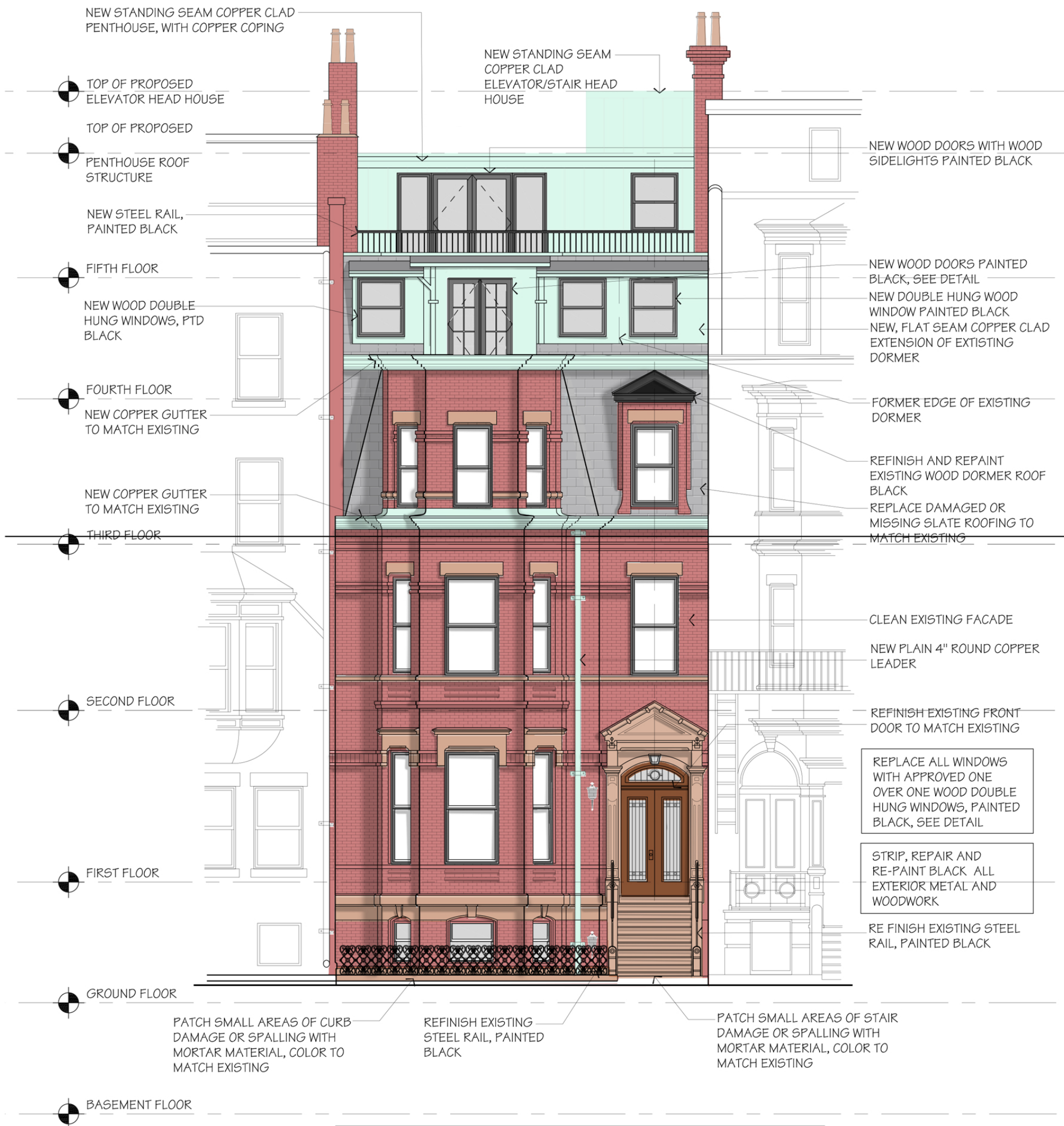
Existing Front Elevation

Scale: 1/8" = 1'-0"

MEYER and MEYER  
I N C.  
ARCHITECTURE & INTERIORS

396 Commonwealth Avenue  
Boston Massachusetts 02215  
617 266 0555  
www.meyerandmeyerarchitects.com

© 2016 - Meyer & Meyer, Inc. - All Rights Reserved



**MASONRY REPOINTING NOTES:**

-REPLACE MISSING OR DAMAGED BRICK TO MATCH EXISTING TYPE AND COLOR.	-REPOINT ELEVATION WITH HIGH SAND AND LIME CONTENT MORTAR. COLOR TO MATCH EXISTING.	-JOINTS TO BE "RAKED" TYPE. -REMOVE EXCESS MORTAR FROM JOINTS.
---	---	---

Proposed

# 361 Beacon Street

Boston • Massachusetts  
December 13, 2017

## Proposed Front Elevation

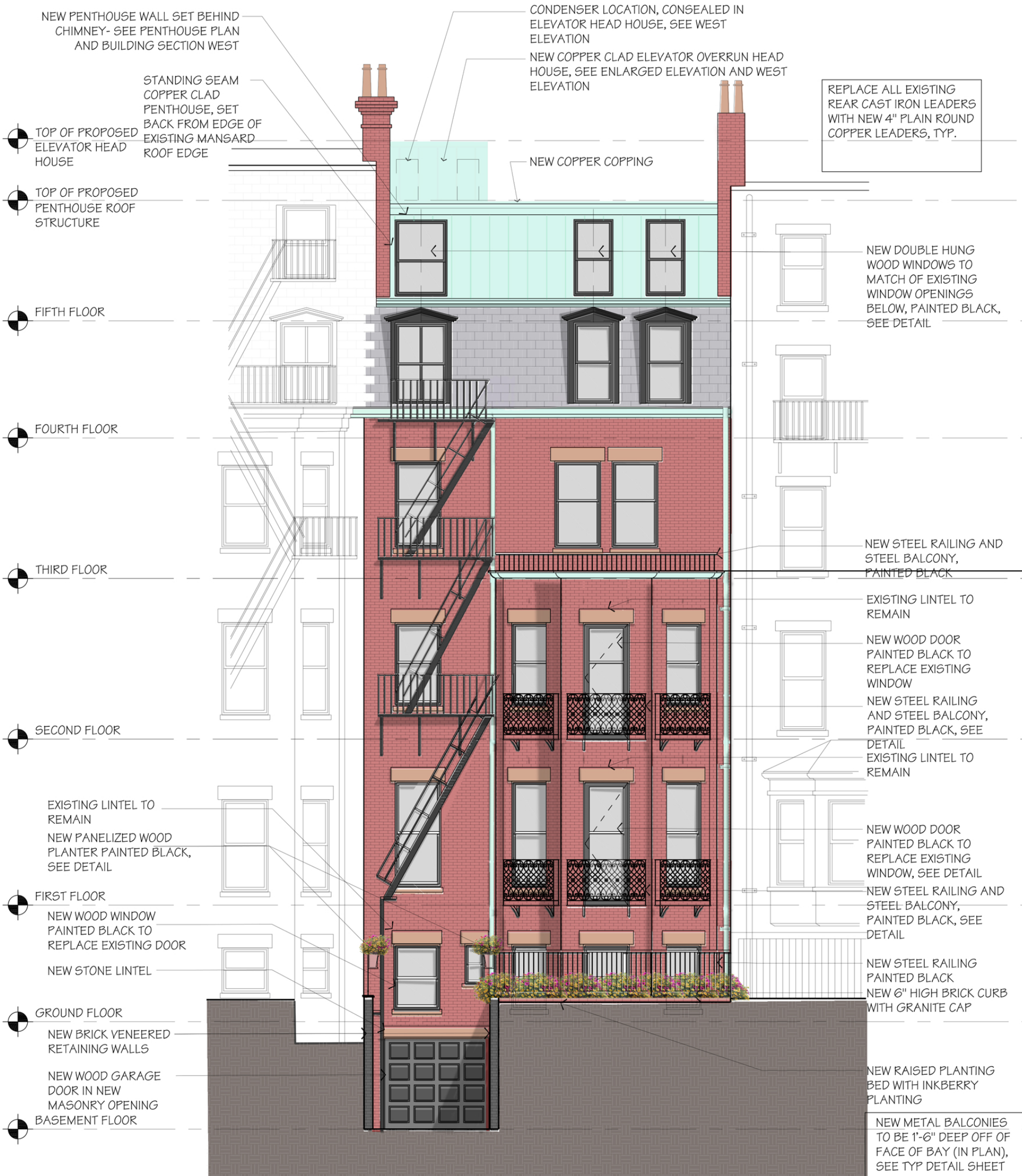
Scale: 1/8" = 1'-0"

### MEYER and MEYER I N C.

ARCHITECTURE & INTERIORS  
396 Commonwealth Avenue  
Boston Massachusetts 02215  
617 266 0555  
www.meyerandmeyerarchitects.com

© 2016 - Meyer & Meyer, Inc. - All Rights Reserved





**MASONRY REPOINTING NOTES:**

- REPLACE MISSING OR DAMAGED BRICK TO MATCH EXISTING TYPE AND COLOR.
- REPOINT ELEVATION WITH HIGH SAND AND LIME CONTENT MORTAR. COLOR TO MATCH EXISTING.
- JOINTS TO BE "RAKED" TYPE.
- REMOVE EXCESS MORTAR FROM JOINTS.

REPLACE ALL WINDOWS WITH APPROVED ONE OVER ONE WOOD DOUBLE HUNG WINDOWS, PAINTED BLACK, SEE DETAIL

Proposed

# 361 Beacon Street

Boston • Massachusetts

December 13, 2017

## Proposed Rear Elevation

Scale: 1/8" = 1'-0"

**MEYER and MEYER**  
I N C.

ARCHITECTURE & INTERIORS

396 Commonwealth Avenue

Boston Massachusetts 02215

617 266 0555

www.meyerandmeyerarchitects.com

© 2016 - Meyer & Meyer, Inc. - All Rights Reserved



Front

Rear

# 361 Beacon Street

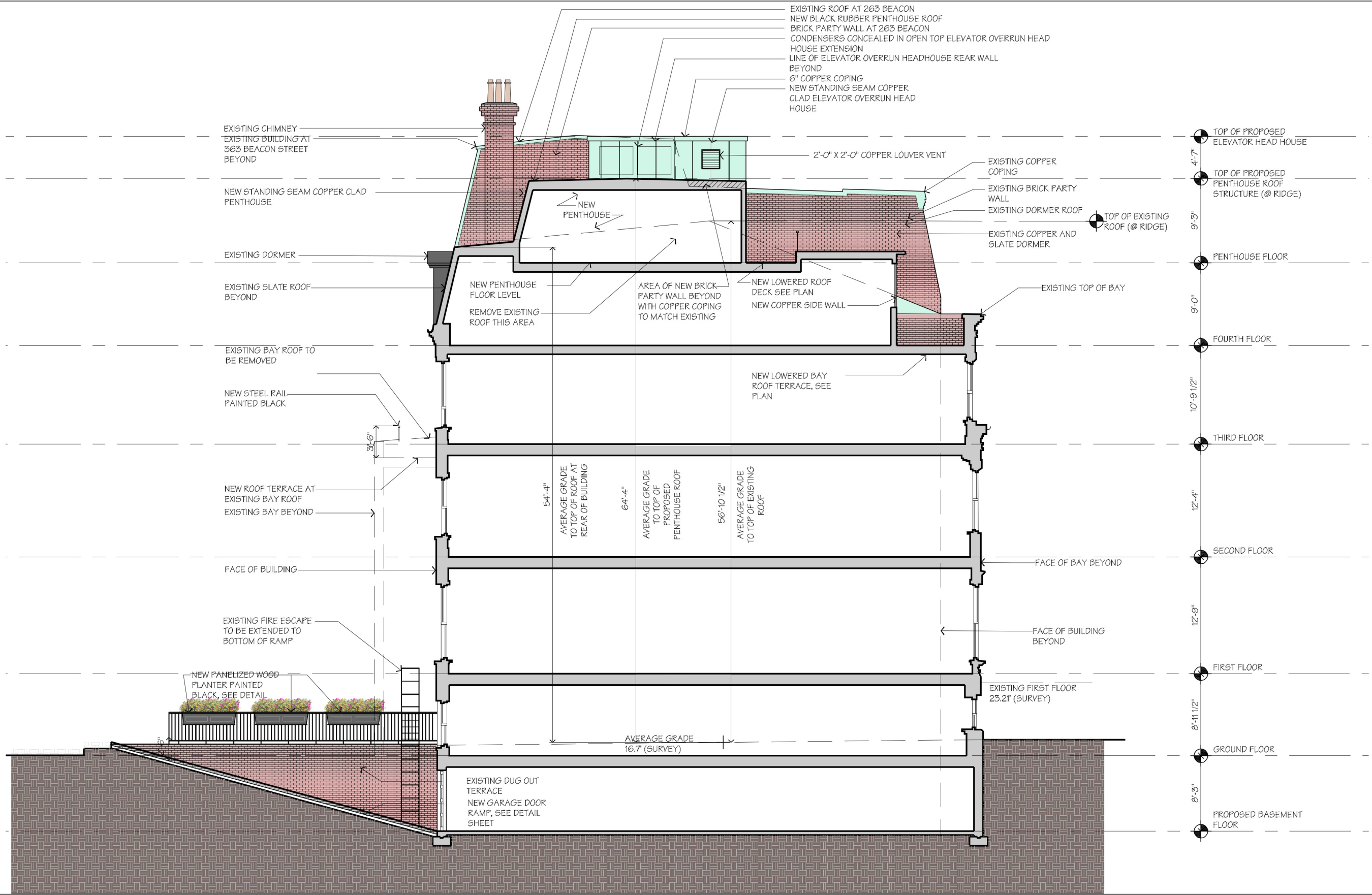
Boston • Massachusetts  
 December 13, 2017

# Proposed Penthouse Elevations

Scale: 1/4" = 1'-0"

**MEYER and MEYER**  
 I N C.  
 ARCHITECTURE & INTERIORS  
 396 Commonwealth Avenue  
 Boston Massachusetts 02215  
 6 1 7 2 6 6 0 5 5 5  
 www.meyerandmeyerarchitects.com

© 2016 - Meyer & Meyer, Inc. - All Rights Reserved



# 361 Beacon Street

Boston • Massachusetts

December 13, 2017

## Proposed Building Section And West Elevation

Scale: 3/32" = 1'-0"

MEYER and MEYER  
I N C.

ARCHITECTURE & INTERIORS

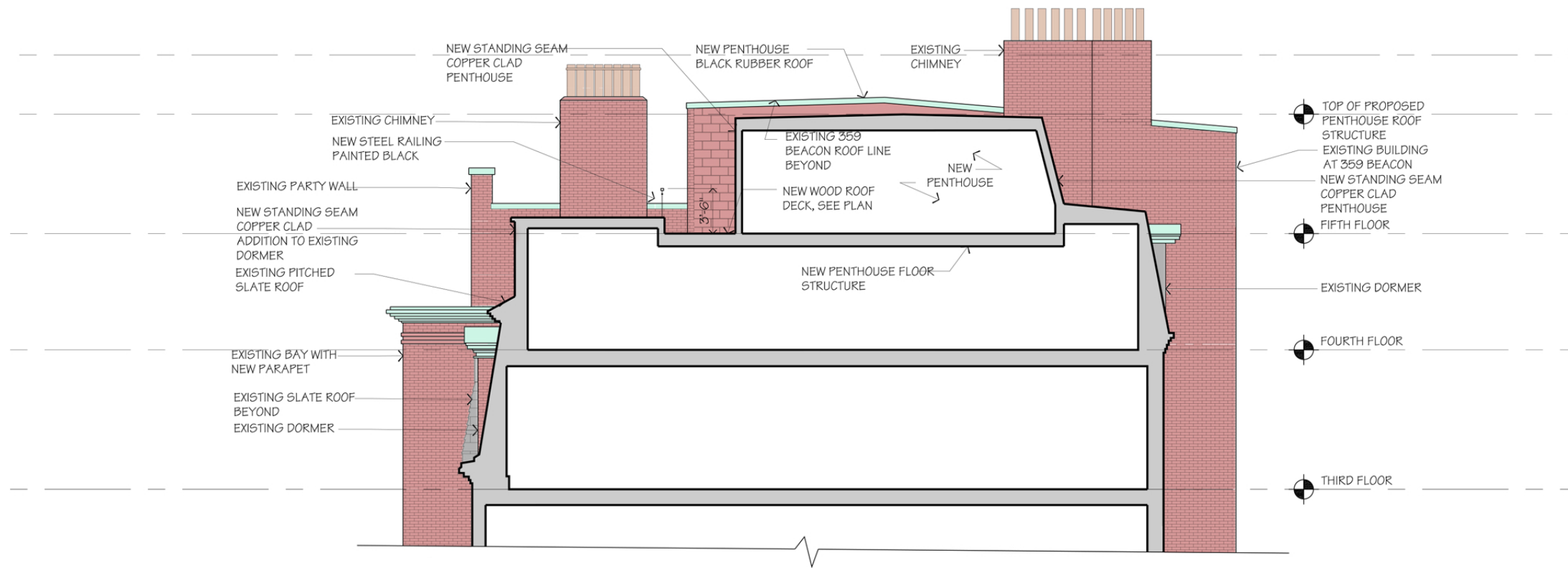
396 Commonwealth Avenue

Boston Massachusetts 02215

6 1 7 2 6 6 0 5 5 5

www.meyerandmeyerarchitects.com





361 Beacon Street

Boston • Massachusetts

December 13, 2017

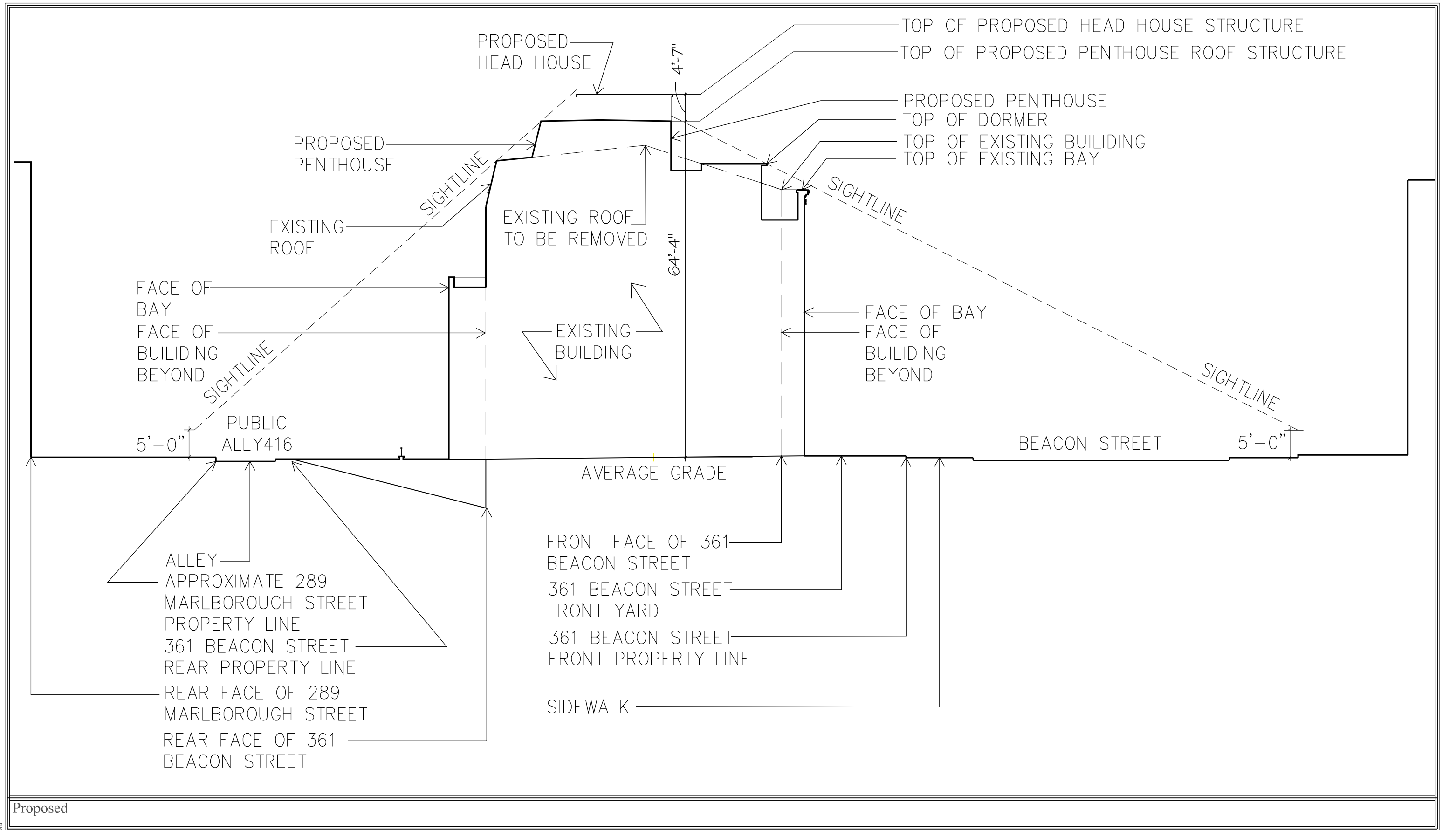
Proposed Building Section And East Elevation

Scale: 3/32" = 1'-0"

MEYER and MEYER  
I N C.

ARCHITECTURE & INTERIORS

396 Commonwealth Avenue  
Boston Massachusetts 02215  
6 1 7 2 6 6 0 5 5 5  
www.meyerandmeyerarchitects.com



Proposed

# 361 Beacon Street

Boston • Massachusetts

December 13, 2017

## Sightline Diagram

Not to Scale

**MEYER and MEYER**  
I N C.

ARCHITECTURE & INTERIORS

396 Commonwealth Avenue  
Boston Massachusetts 02215

6 1 7 2 6 6 0 5 5 5

www.meyerandmeyerarchitects.com

© 2016 Meyer & Meyer, Inc. All Rights Reserved



Front Elevation



Rear Elevation

# 361 Beacon Street

Boston • Massachusetts

December 13, 2017

## Mock Up Views

MEYER and MEYER  
I N C.

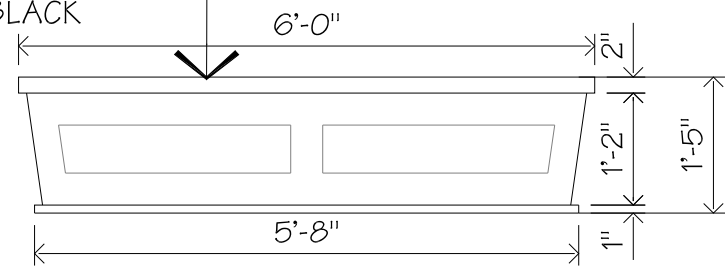
ARCHITECTURE & INTERIORS

396 Commonwealth Avenue  
Boston Massachusetts 02215

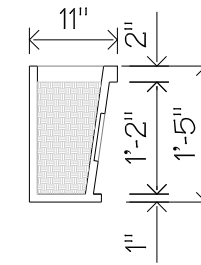
6 1 7 2 6 6 0 5 5 5

[www.meyerandmeyerarchitects.com](http://www.meyerandmeyerarchitects.com)

NEW PANELIZED  
WOOD PLANTER  
PAINTED BLACK

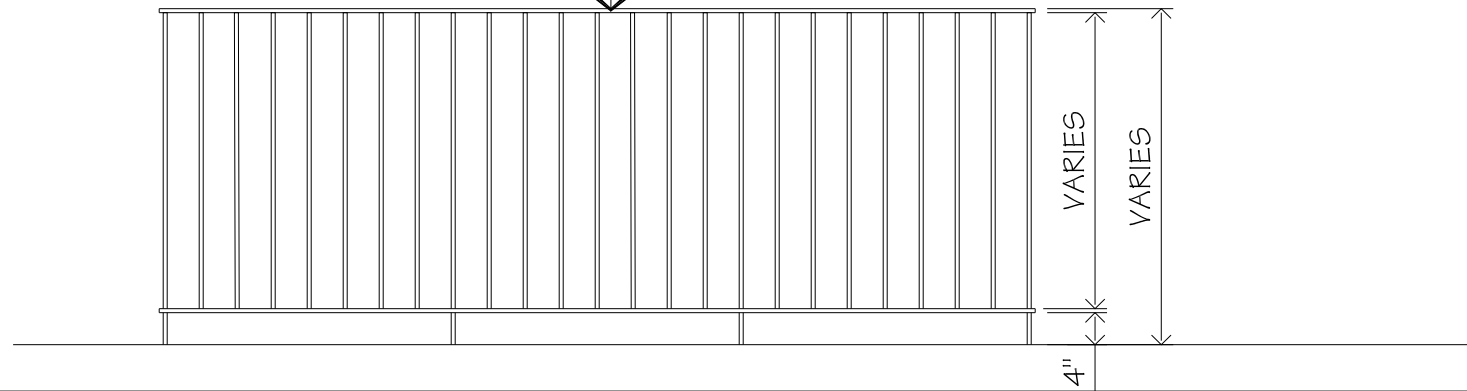


Typical Window Box Front Elevation

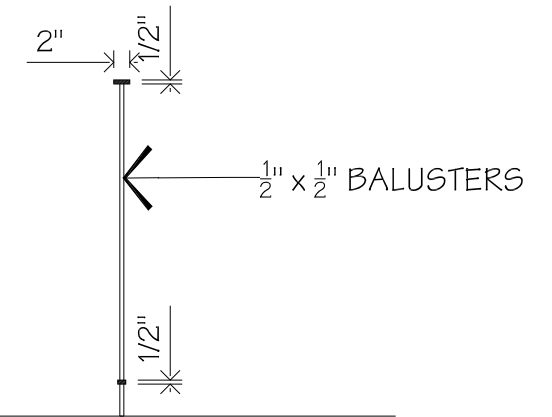


Typical Window Box Side Elevation

STEEL RAILING  
PAINTED BLACK

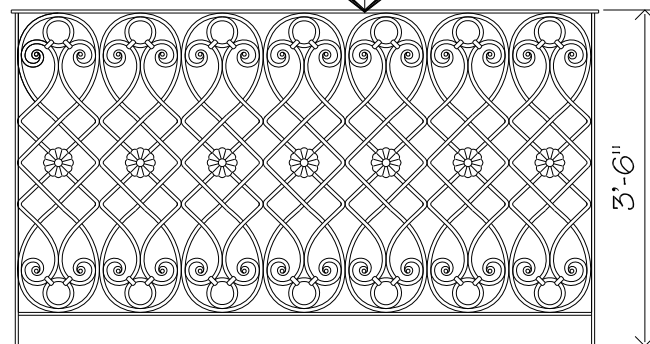


Typical Railing Front Elevation

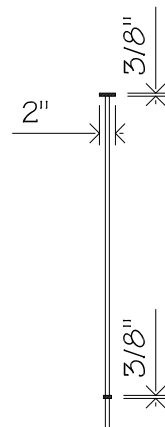


Typical Railing Side Elevation

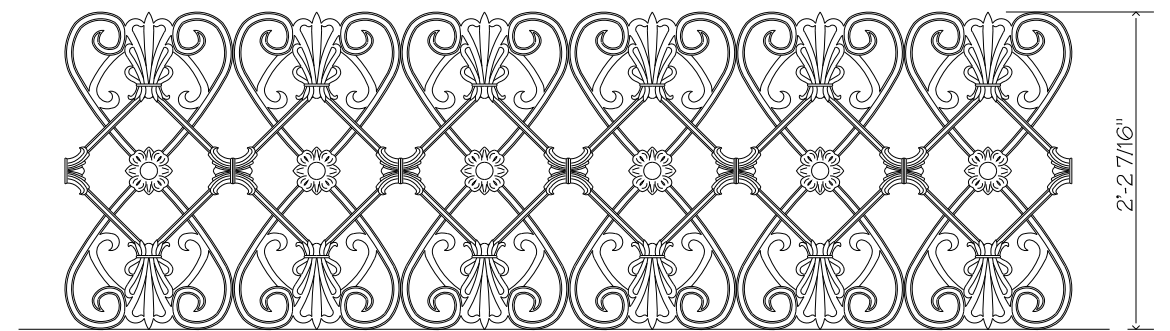
STEEL RAILING  
PAINTED BLACK



Typical Balcony Railing Front Elevation



Typical Balcony Railing Side Elevation



Typical Front Garden Rail

361 Beacon Street

Boston • Massachusetts

October 11, 2017

Rail Details

NTS

MEYER and MEYER

I N C.

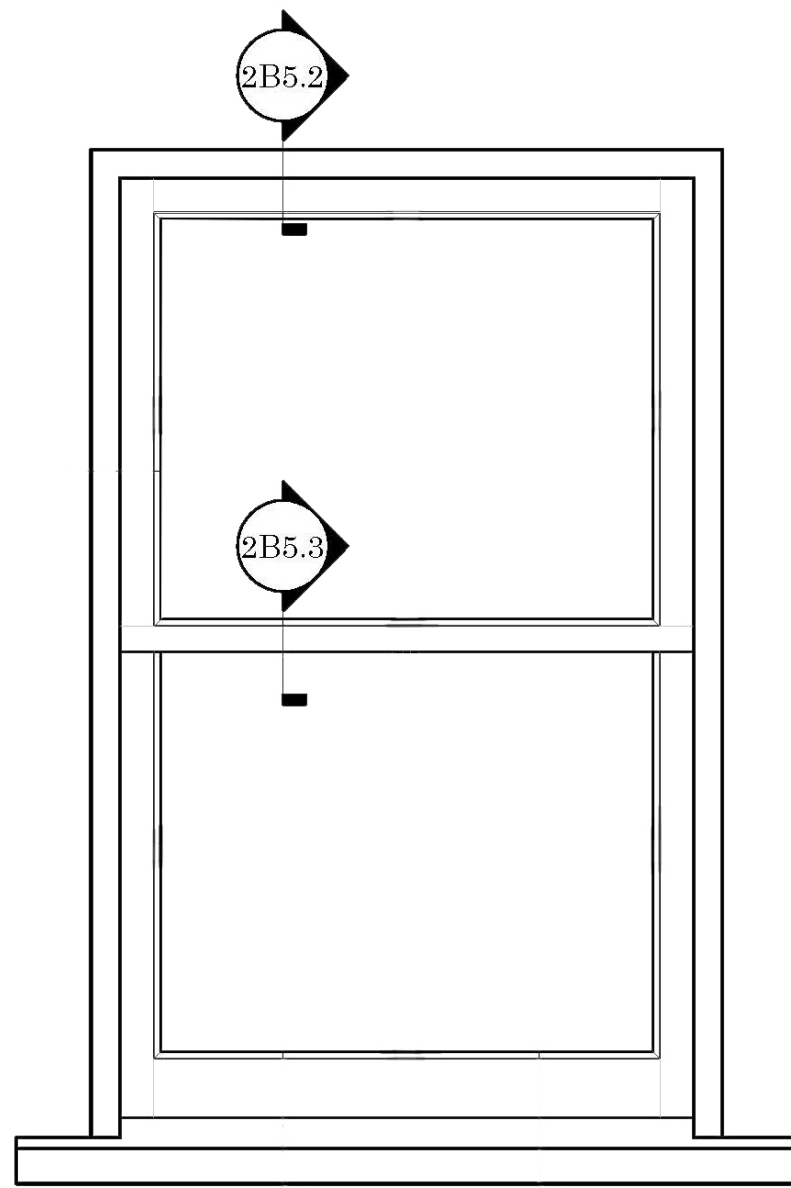
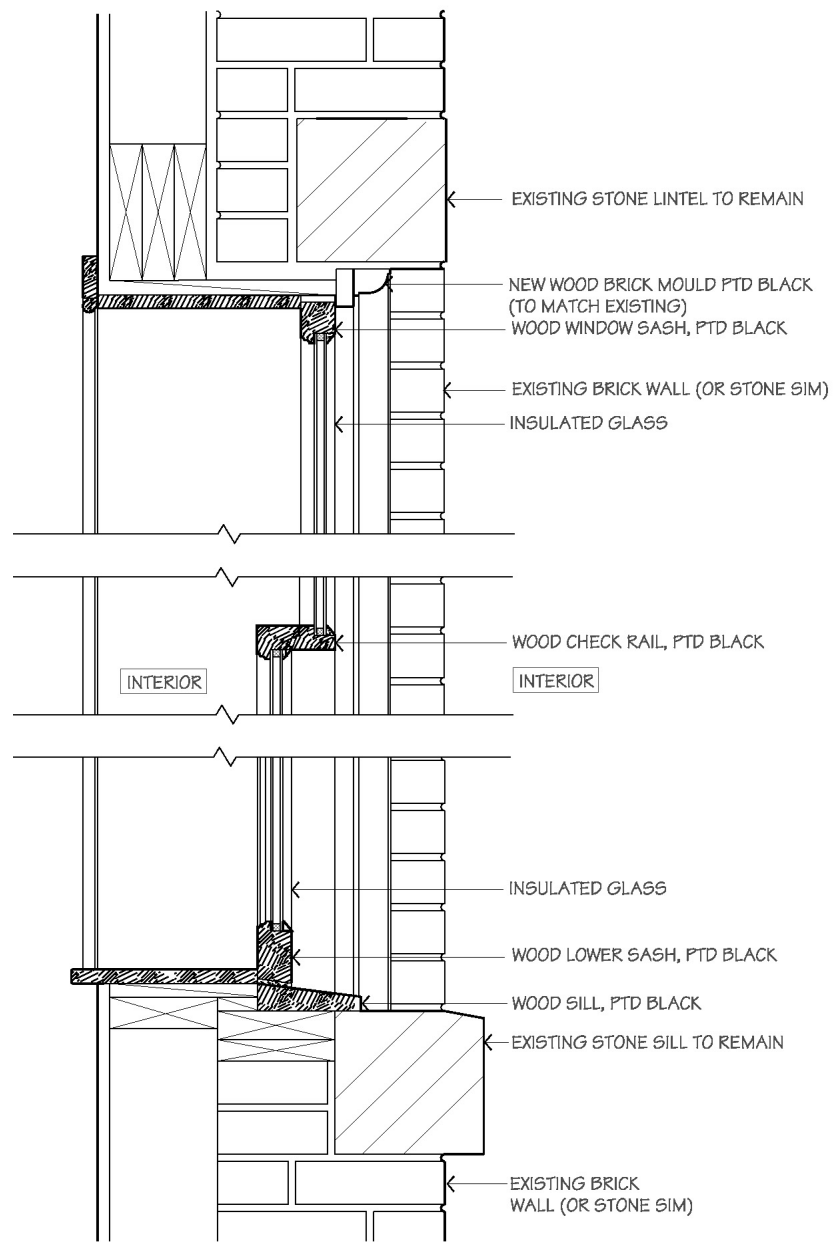
ARCHITECTURE & INTERIORS

396 Commonwealth Avenue

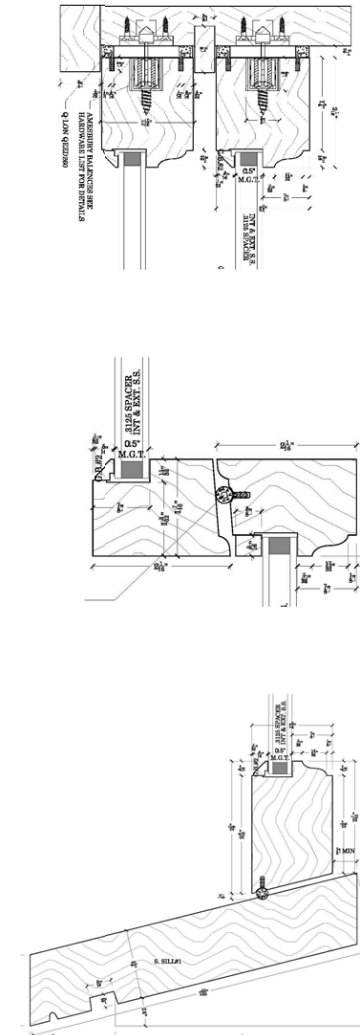
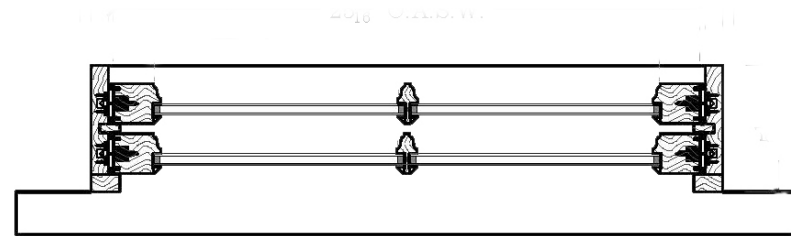
Boston Massachusetts 02215

6 1 7 2 6 6 0 5 5 5

www.meyerandmeyerarchitects.com



ONE OVER ONE DOUBLE HUNG WINDOWS, PAINTED BLACK, TYPICAL ALL NEW WINDOWS



Straight Sash Detail

Typical Brick Wall Window Detail

Straight Sash Detail

361 Beacon Street

Boston • Massachusetts

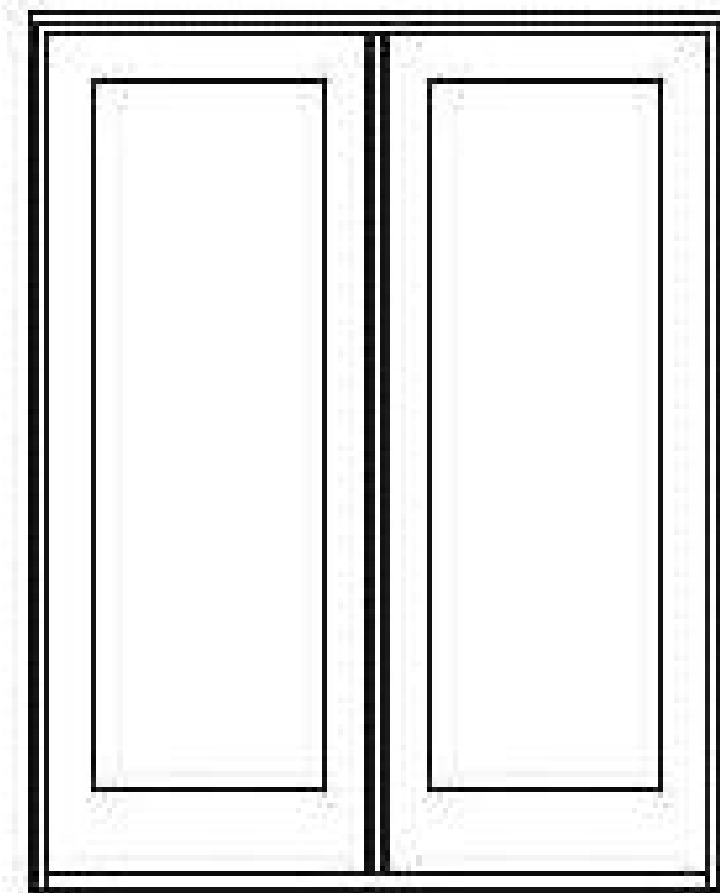
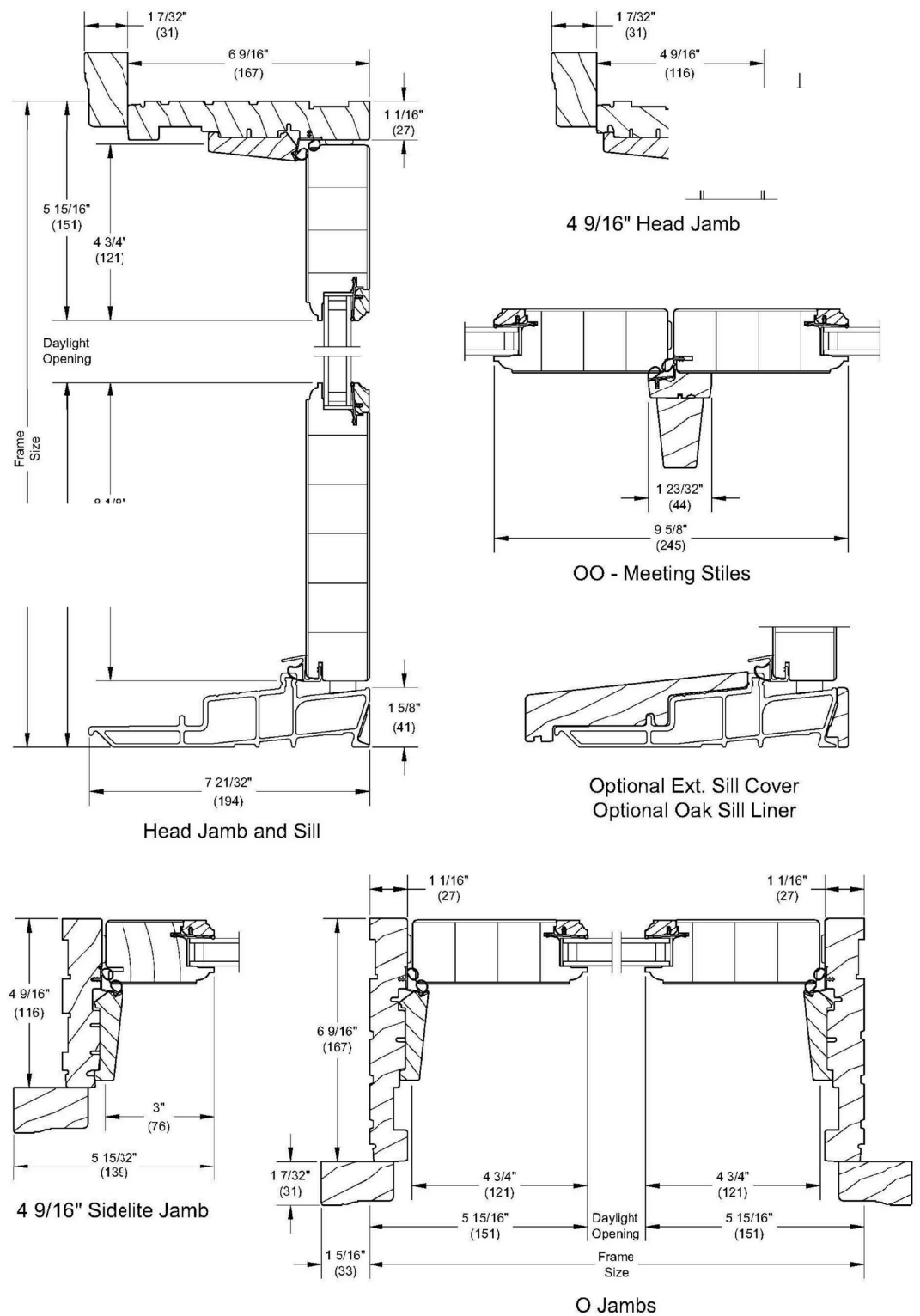
August 22, 2017

# Window Details

1 1/2" = 1' Scale

MEYER and MEYER  
I N C.  
ARCHITECTURE & INTERIORS

396 Commonwealth Avenue  
Boston Massachusetts 02215  
617 266 0555  
www.meyerandmeyerarchitects.com



WOOD STILE AND RAIL (AND GLASS) DOORS,  
PAINTED BLACK. TYPICAL ALL NEW DOORS

Wood Door Details

Wood Door Elevation

361 Beacon Street

Boston • Massachusetts

September 19, 2017

# Door Details

1 1/2" = 1' Scale

MEYER and MEYER  
I N C.  
ARCHITECTURE & INTERIORS

396 Commonwealth Avenue  
Boston Massachusetts 02215  
617 266 0555  
www.meyrandmeyerarchitects.com

© 2015 - Meyer & Meyer, Inc. - All Rights Reserved

