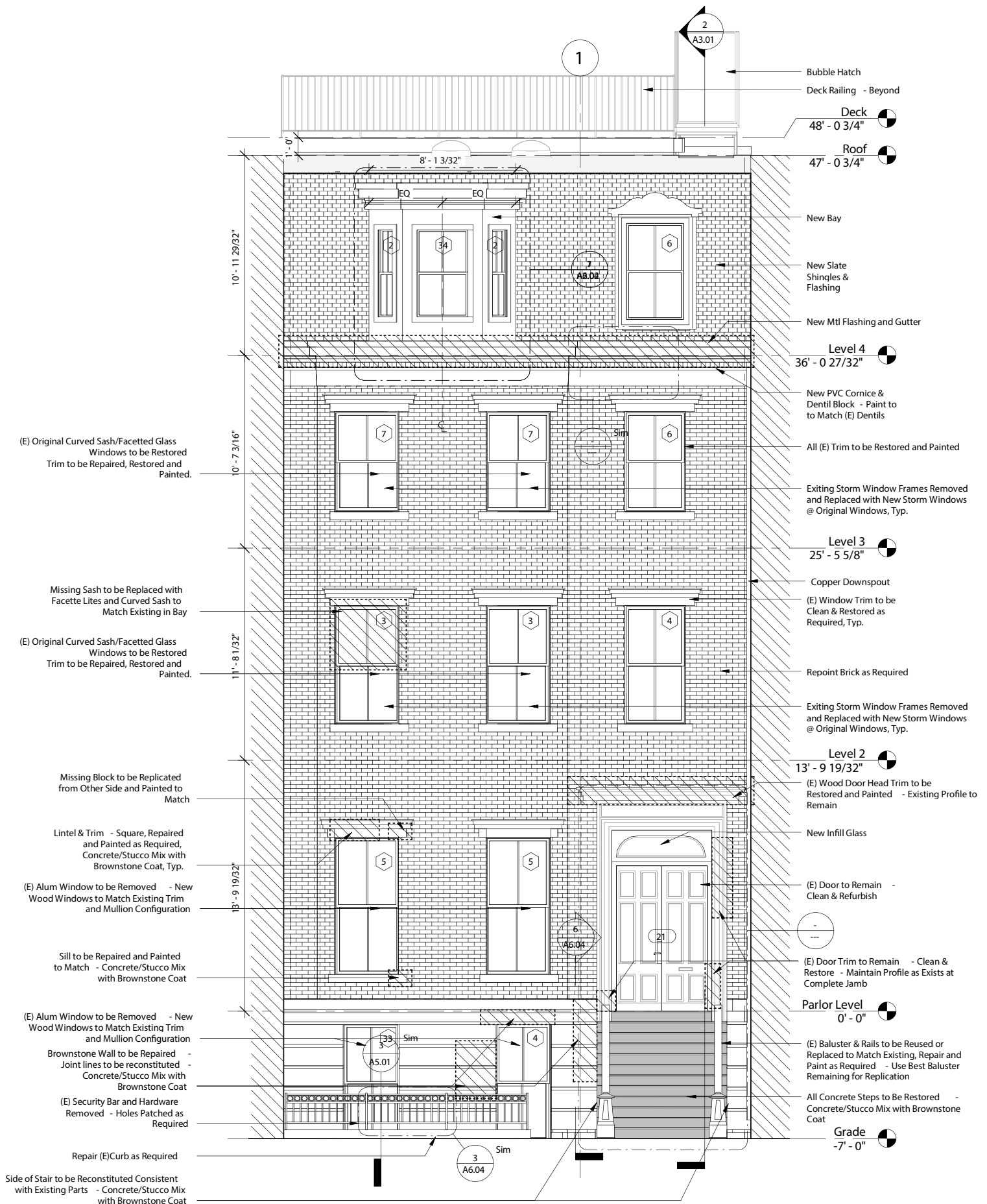


511 Mass. Ave

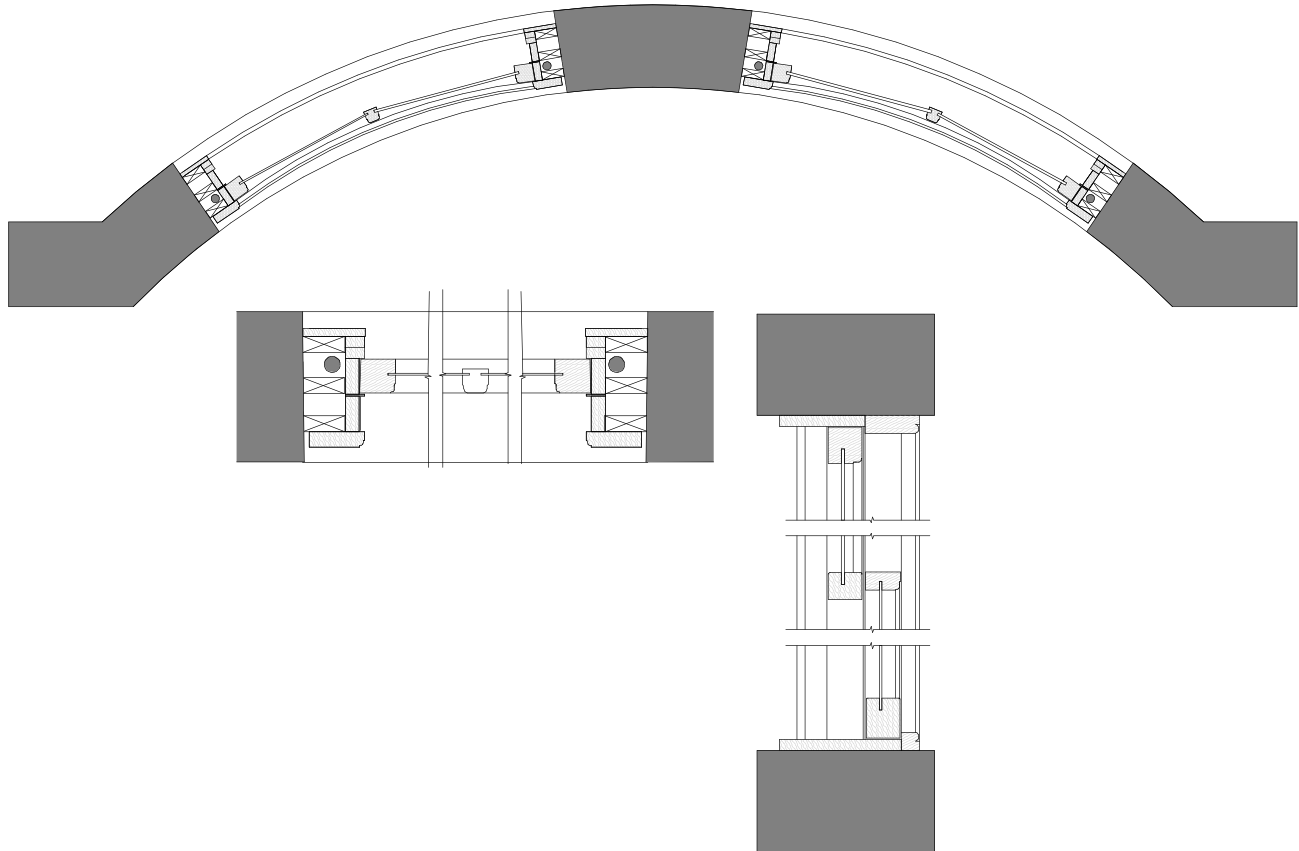






Windows:

The windows on level 2 and 3 are original windows with curved sashes w/ facted lites at center mullion. Windows will be restored and a clear storm window will be installed in front of existing, with horizontal muntin to align with middle sash.



Provide details/scope of masonry repairs - methods and materials :

Masonry Cleaning.

- Sample cleaning of discreet locations using various means and methods including different products to be completed and reviewed in advance.
- Typically use ProsoCo family of cleaning products varying from mild to stronger cleaners depending on requirements of the project and results achieved.
- Building to be washed down with water only to wet surfaces initially. Diluted cleaning product (dilution rates to be determined during sample phase) to be applied to surface and scrubbed into wall. Wall to be rinsed with water.

Repointing.

- Typically, we complete samples of repointing for review and approval of color and finish.
- Existing mortar joints to be cut out using a combination of mechanical grinders and hand tools to complete head joints.
- Mortar typically Type N for repointing or a custom mix to match existing.

Brownstone Repair

- Brownstone to be cut back to stable material and replaced with concrete/stucco mix and brownstone coat.

Door:

Door is not original - We will repair if possible or replace as indicated



Front Door



511 Mass Ave. - 1972



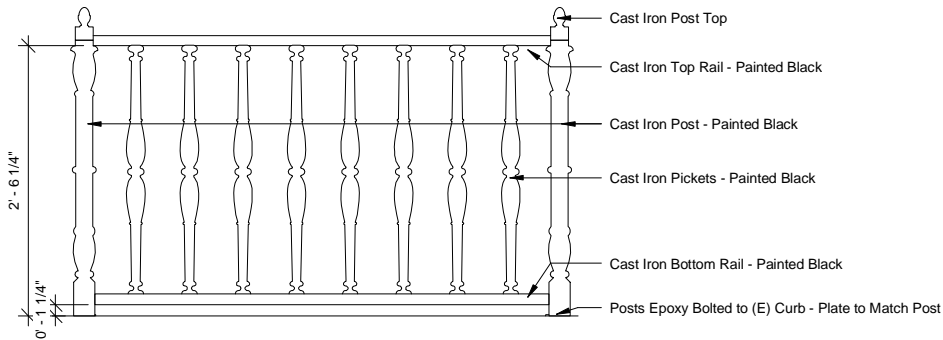
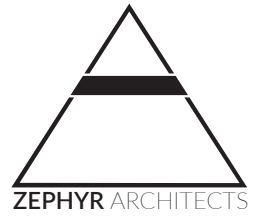
Solid Option



Half-lite Option



511 Mass. Ave



8 Railing at Front - Typ Section
1" = 1'-0"



Product Information
Item No.: 1027
Element:
Dimensions:
Height: 29 in.
Width: 3.47" CENTER to CENTER
Weight:
13.5 lb.



[Back to Search](#)

Product Information
Item No.: 1152
Element: Post
Dimensions:
Height: 31 in.
Width: 3.5 in.
Weight:
28 lb.



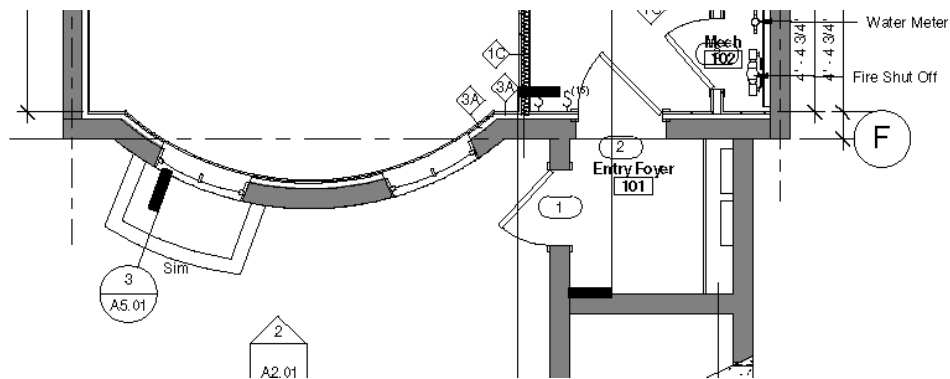
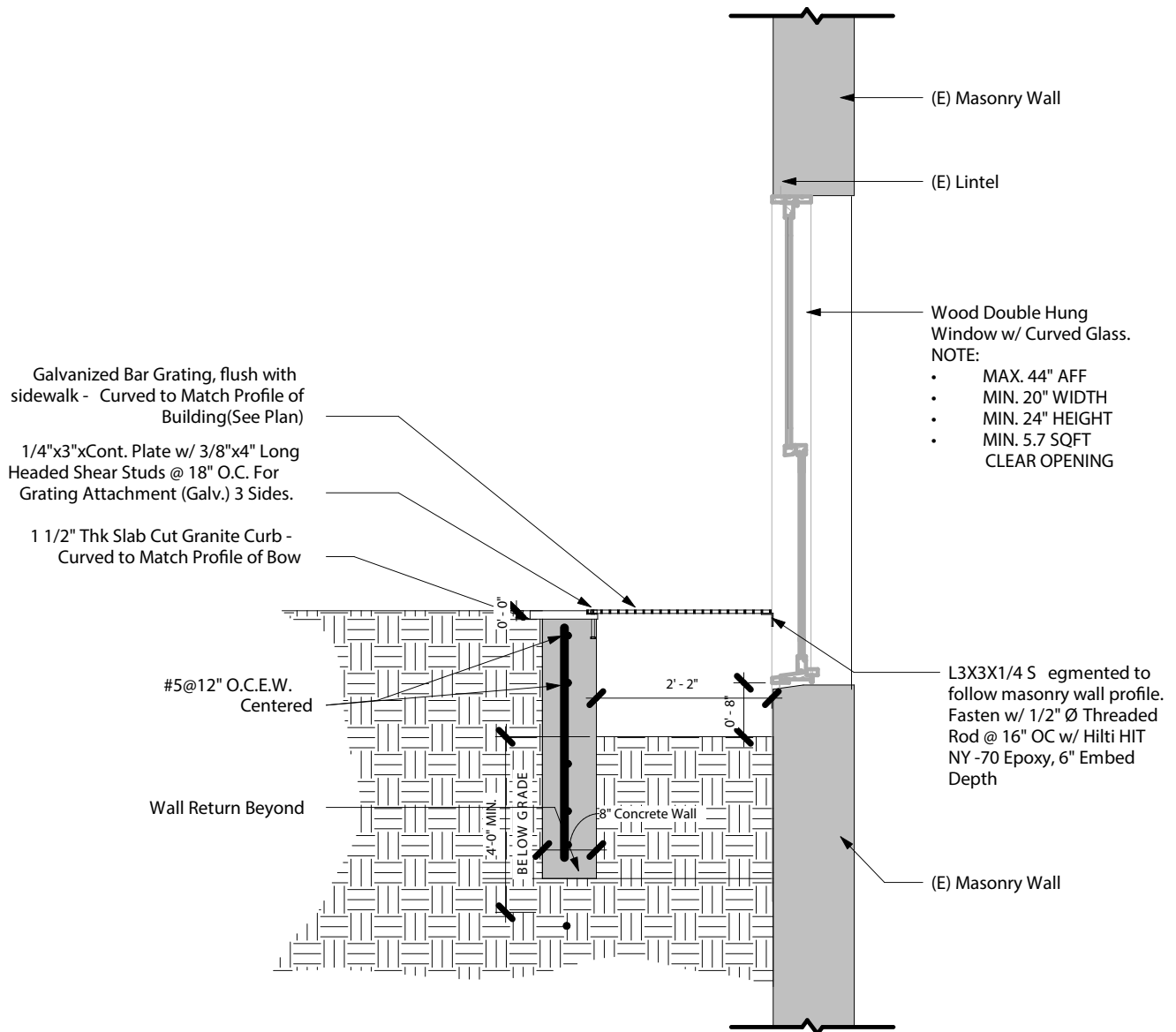
[Back to Search](#)

Product Information
Item No.: 1027
Element: Phoenician Post Top
Dimensions:
Height: 7 in.
2 1/2" - 10 1/2" inside depth
Weight:
33.5 lb.



[Back to Search](#)

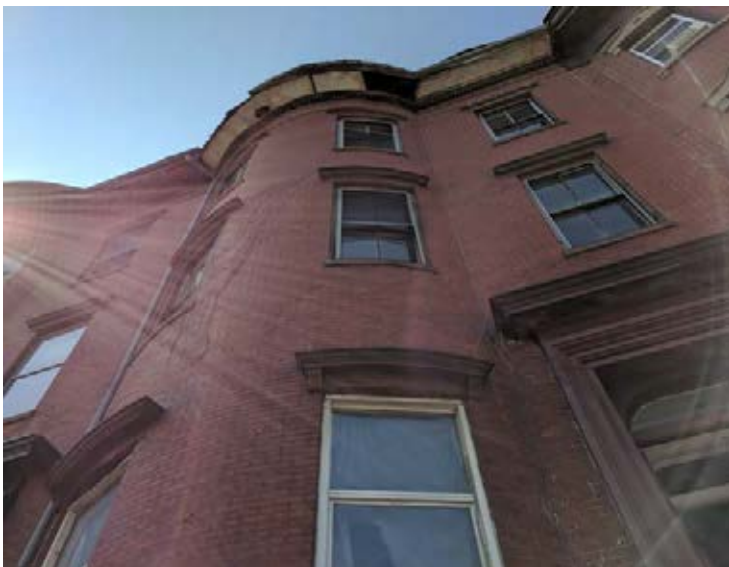
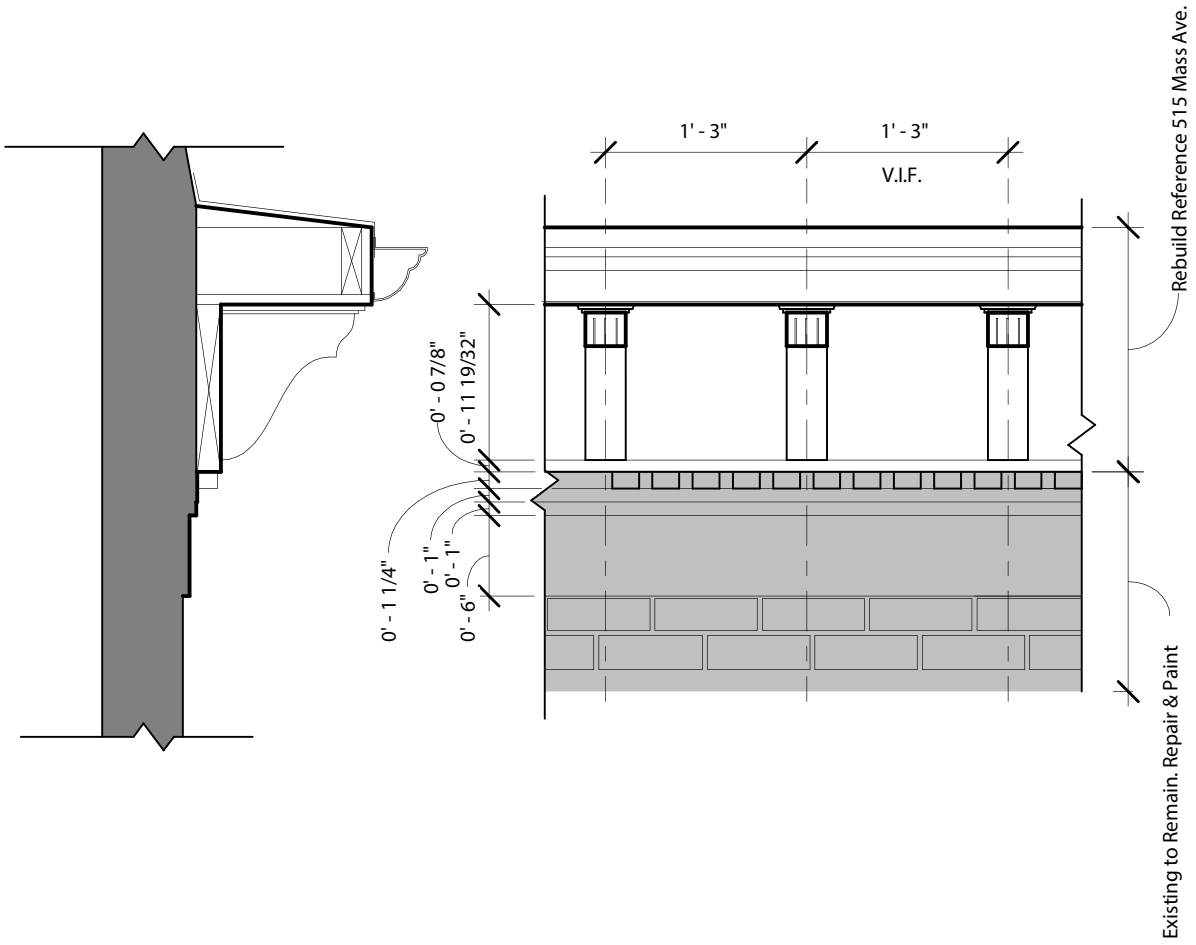
Lightwell to provide egress window for bedroom. Detail Below.



Curved Glass



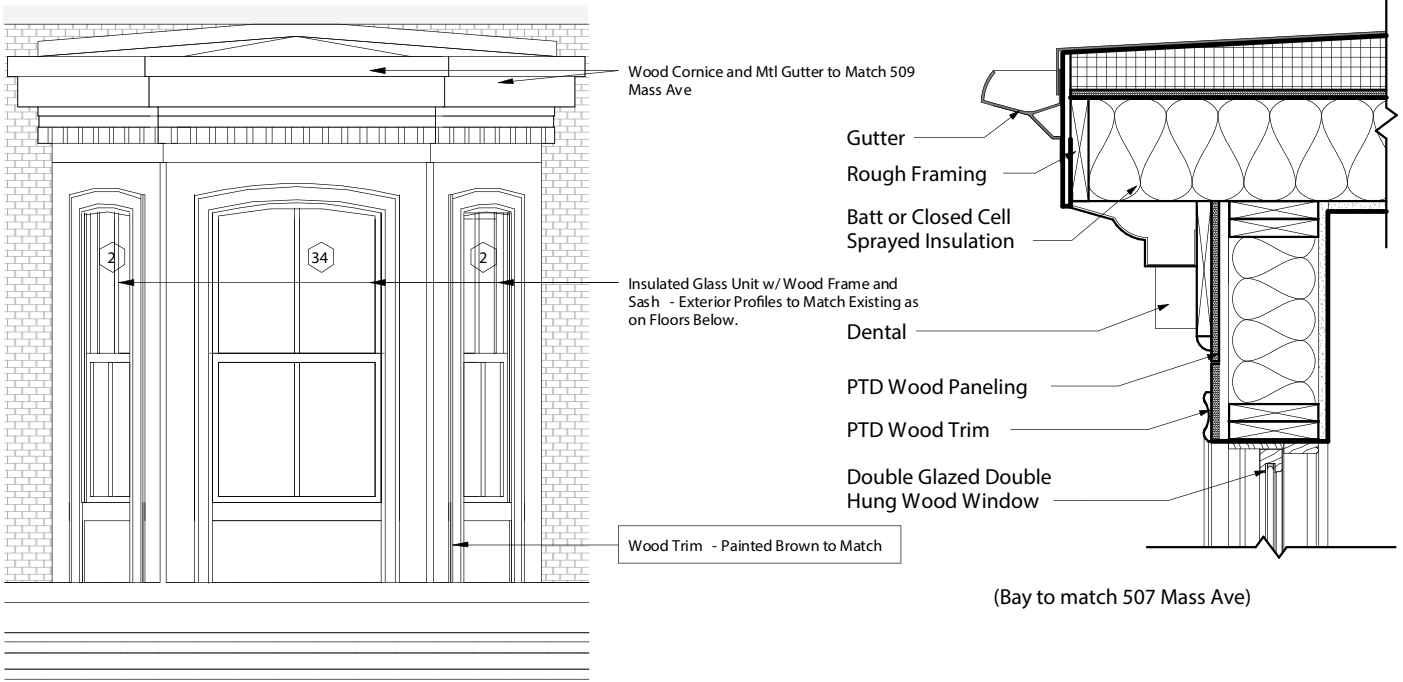
Garden Level Windows @ Bow



Existing Cornice Non-existent



515 Mass Cornice to be Replicated



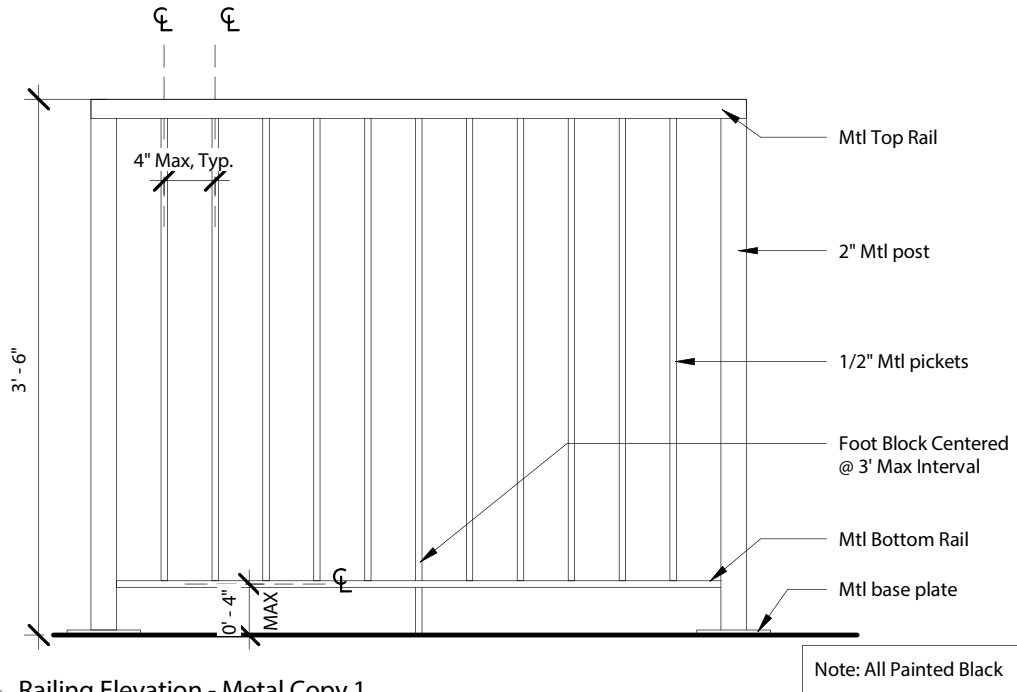
Bay Windows @ 507 Mass Ave - Will Replicate



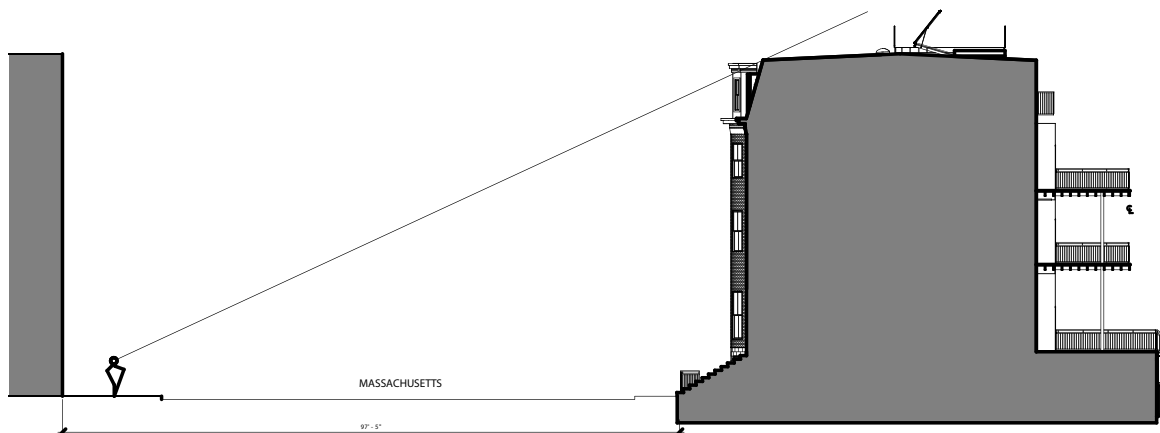


Deck Railing

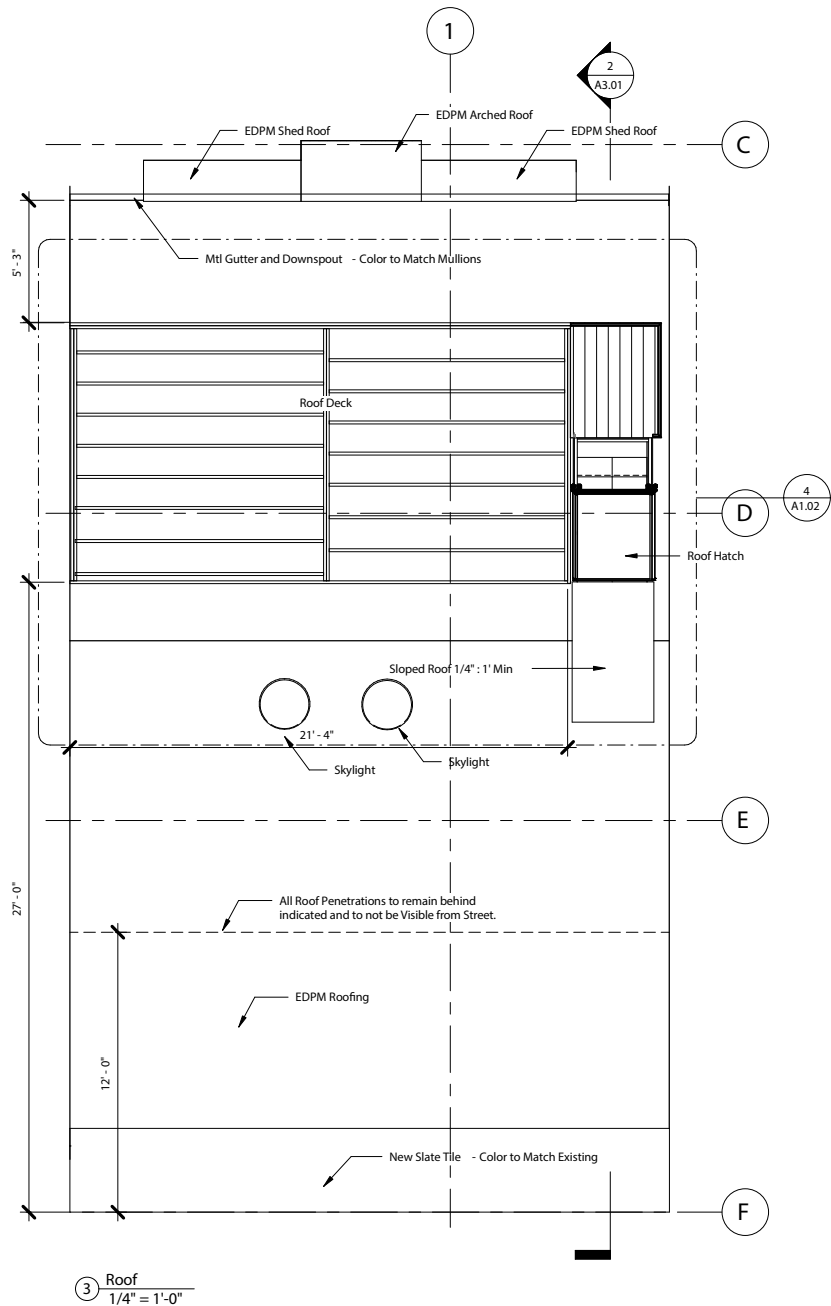
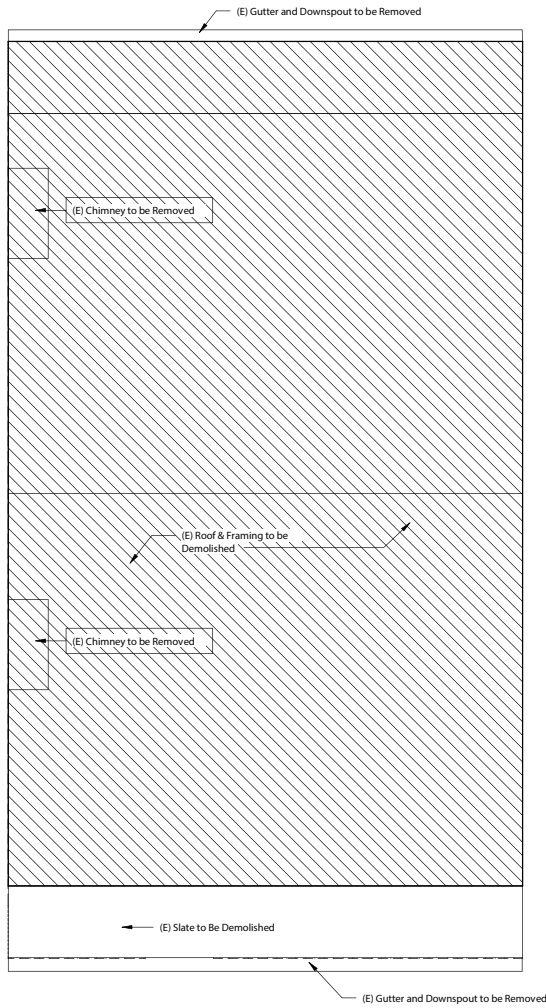
Deck will be composite decking with black metal picket railing 3'-6" off of deck. Deck is positioned at the back of the property to ensure deck railing can not be seen from street. See additional details below.



4 Railing Elevation - Metal Copy 1
1" = 1'-0"

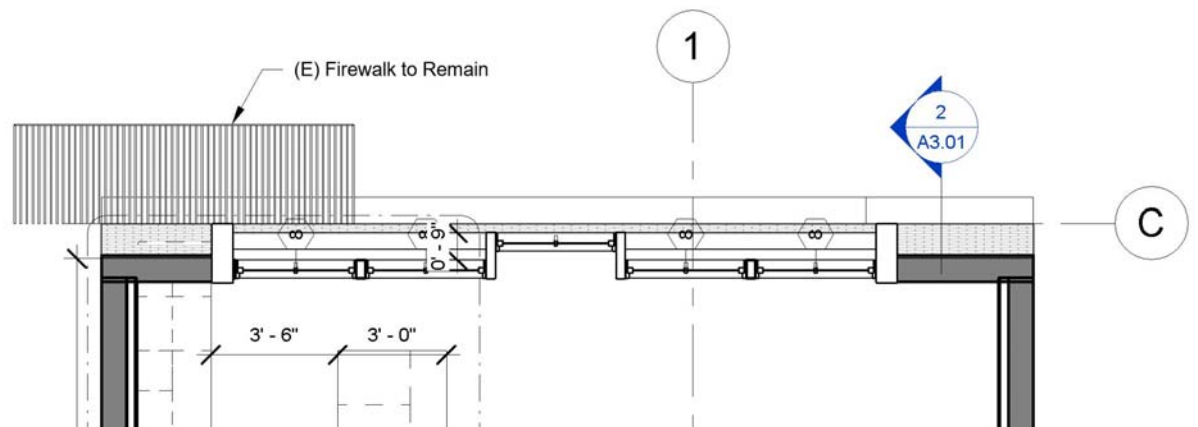


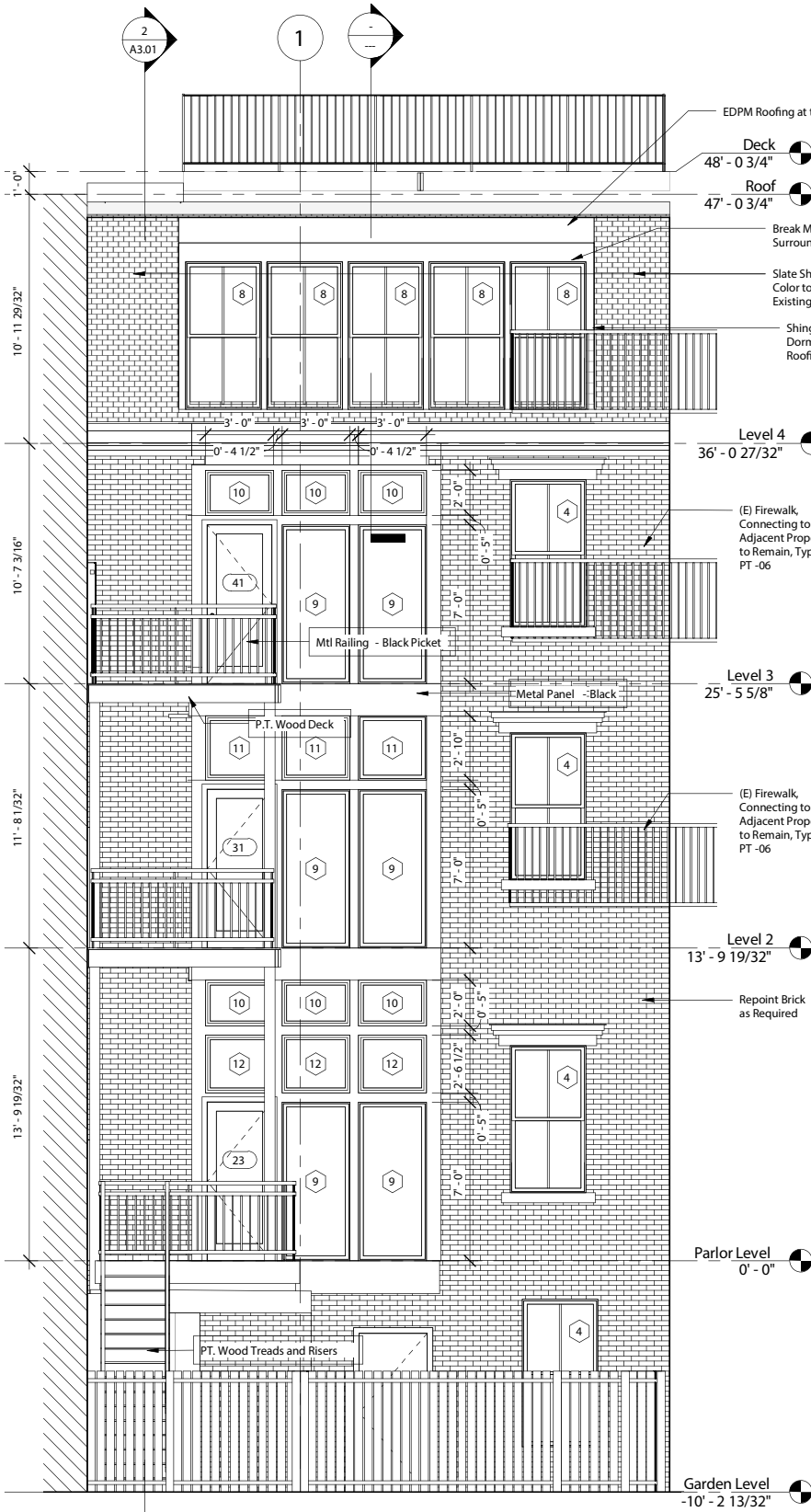
Existing & Demo - Roof



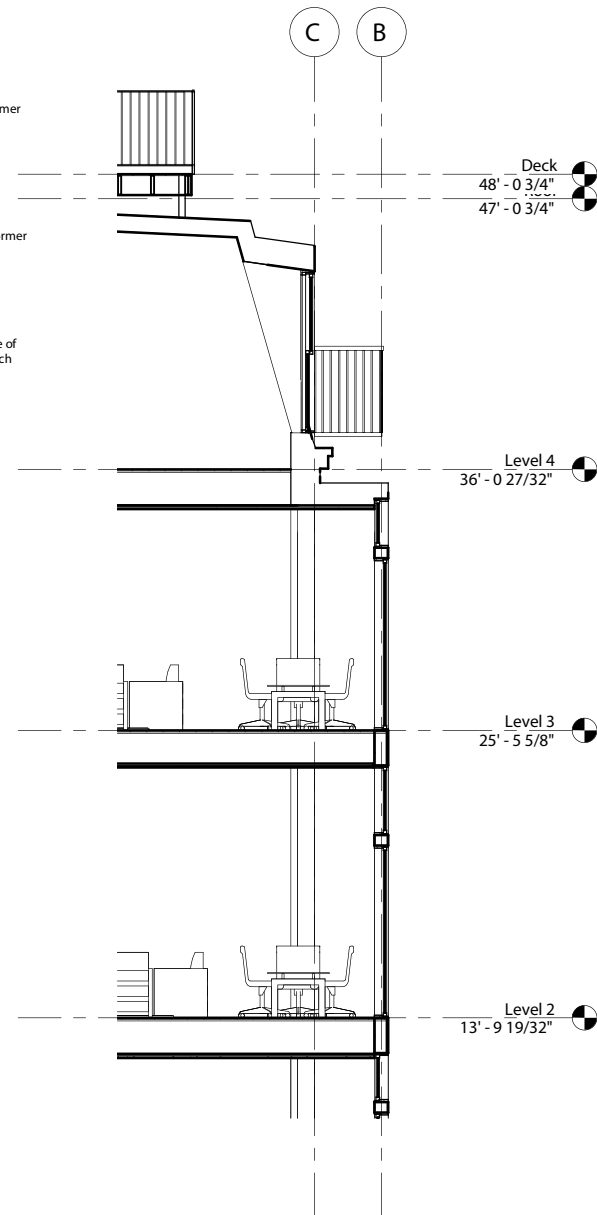


Proposed View 2

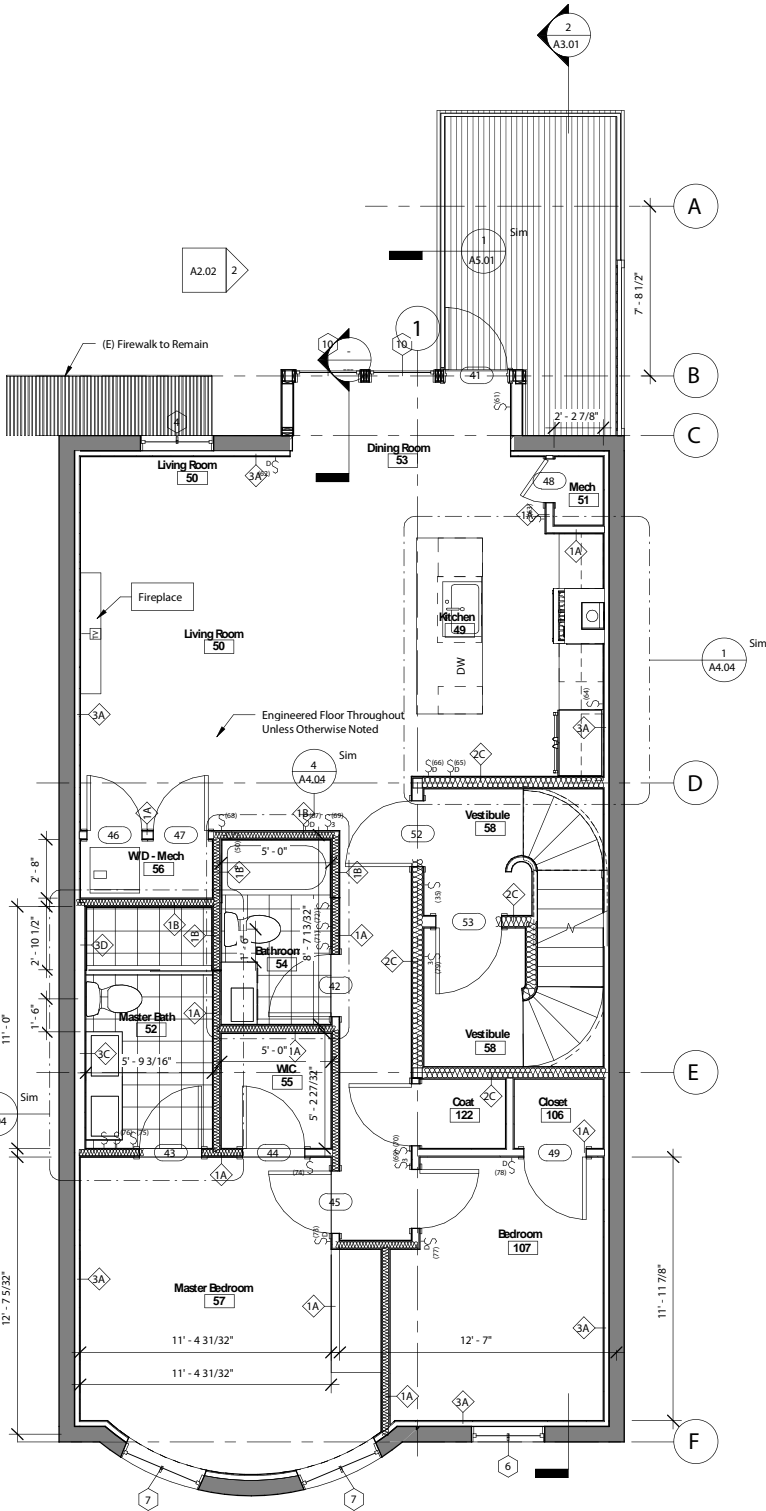




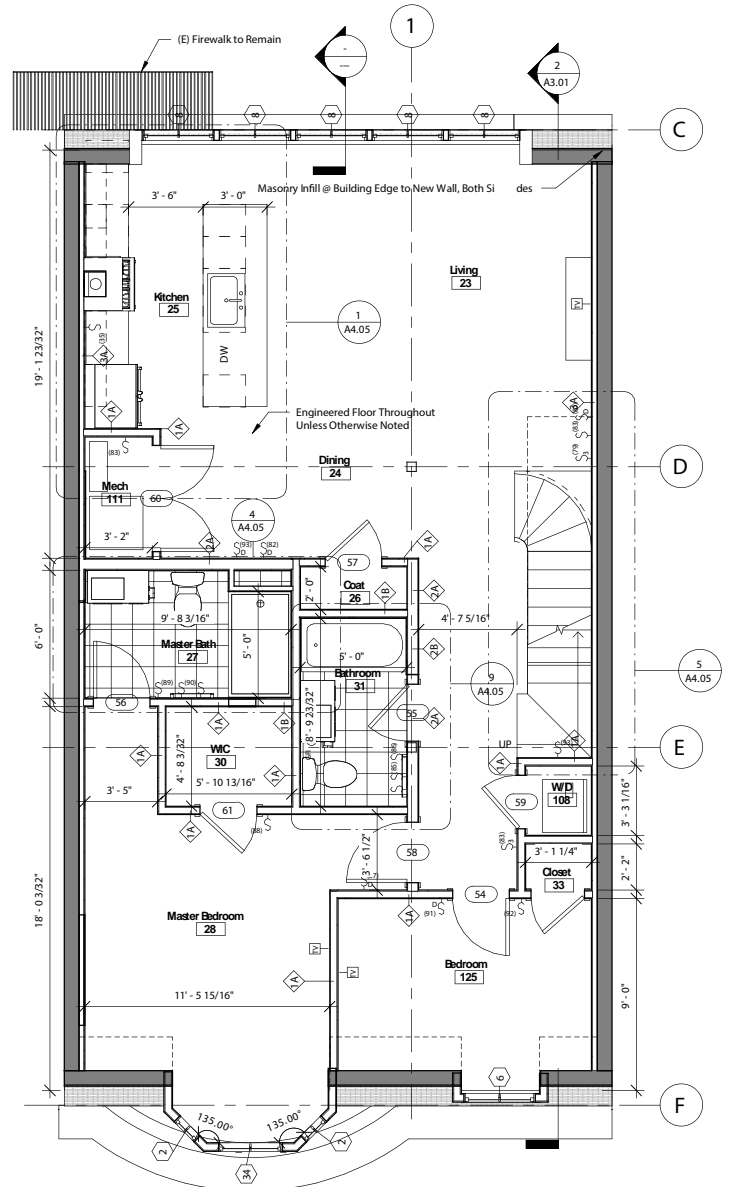
South (rear) Elevation



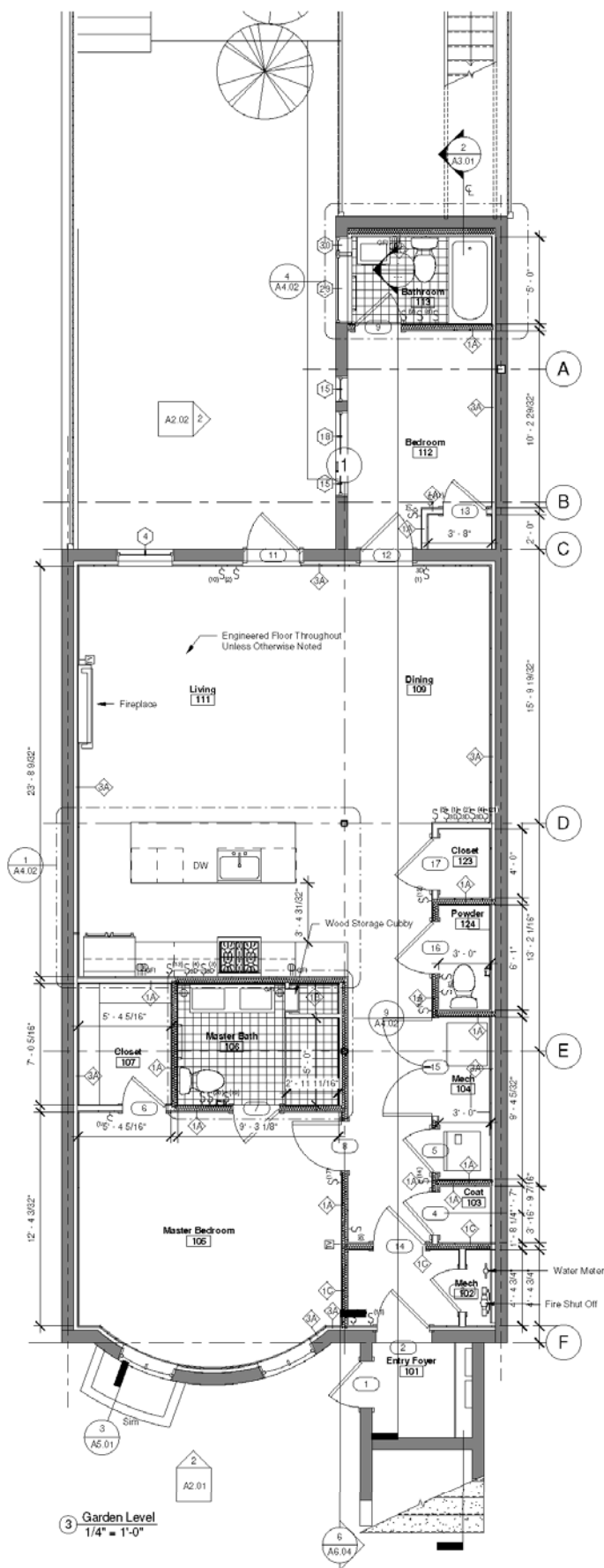
South (Back) Wall Section



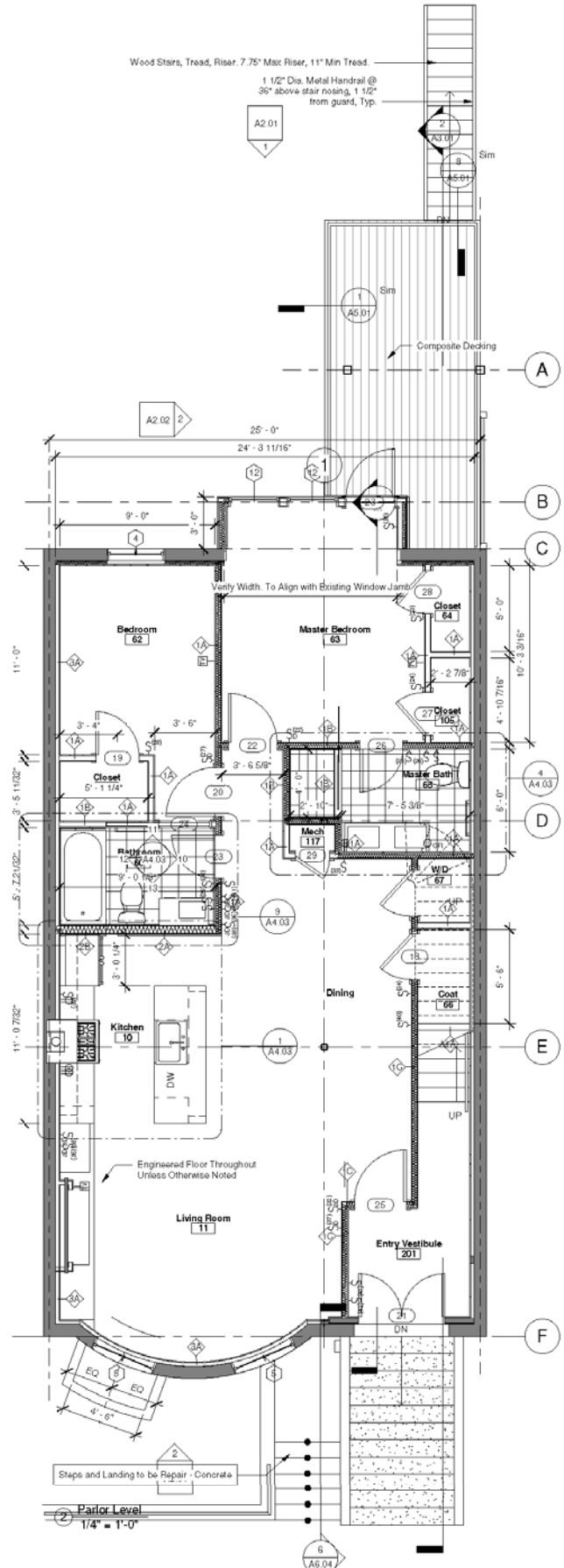
Level 3 (typ)



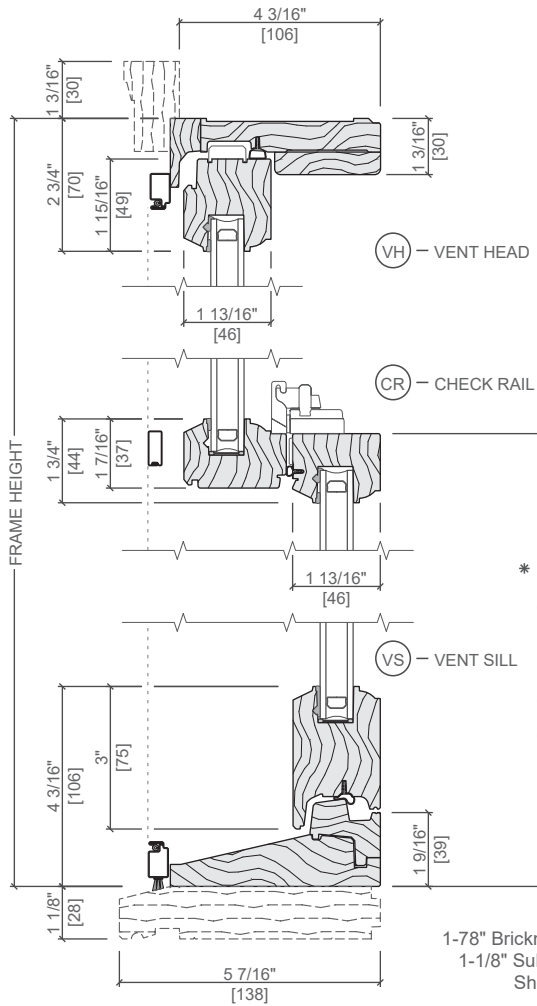
Level 4



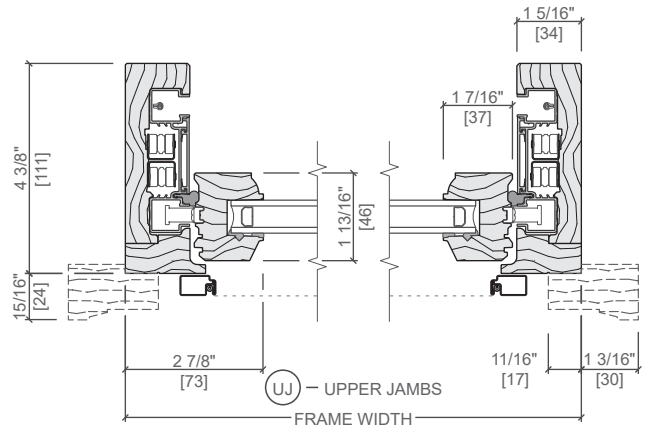
Garden Level



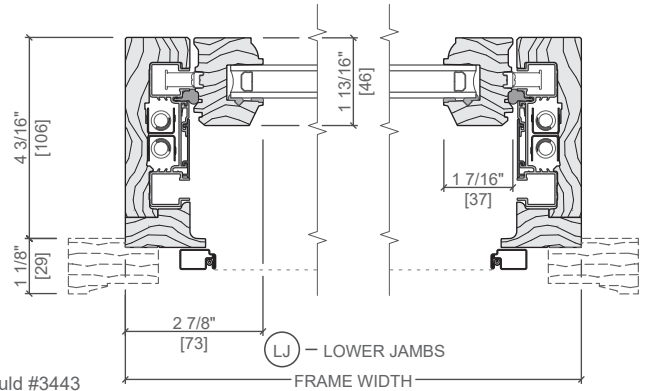
Parlor Level



1-78" Brickmould #3443
1-1/8" Sub sill #3544
Shown



* Dimension required for ordering units with unequal sash.



Putty Glaze and Ogee Grilles
Wood Exterior - Wood Interior

