

# Proposed Restoration and Relocation of the E. Howard Clock

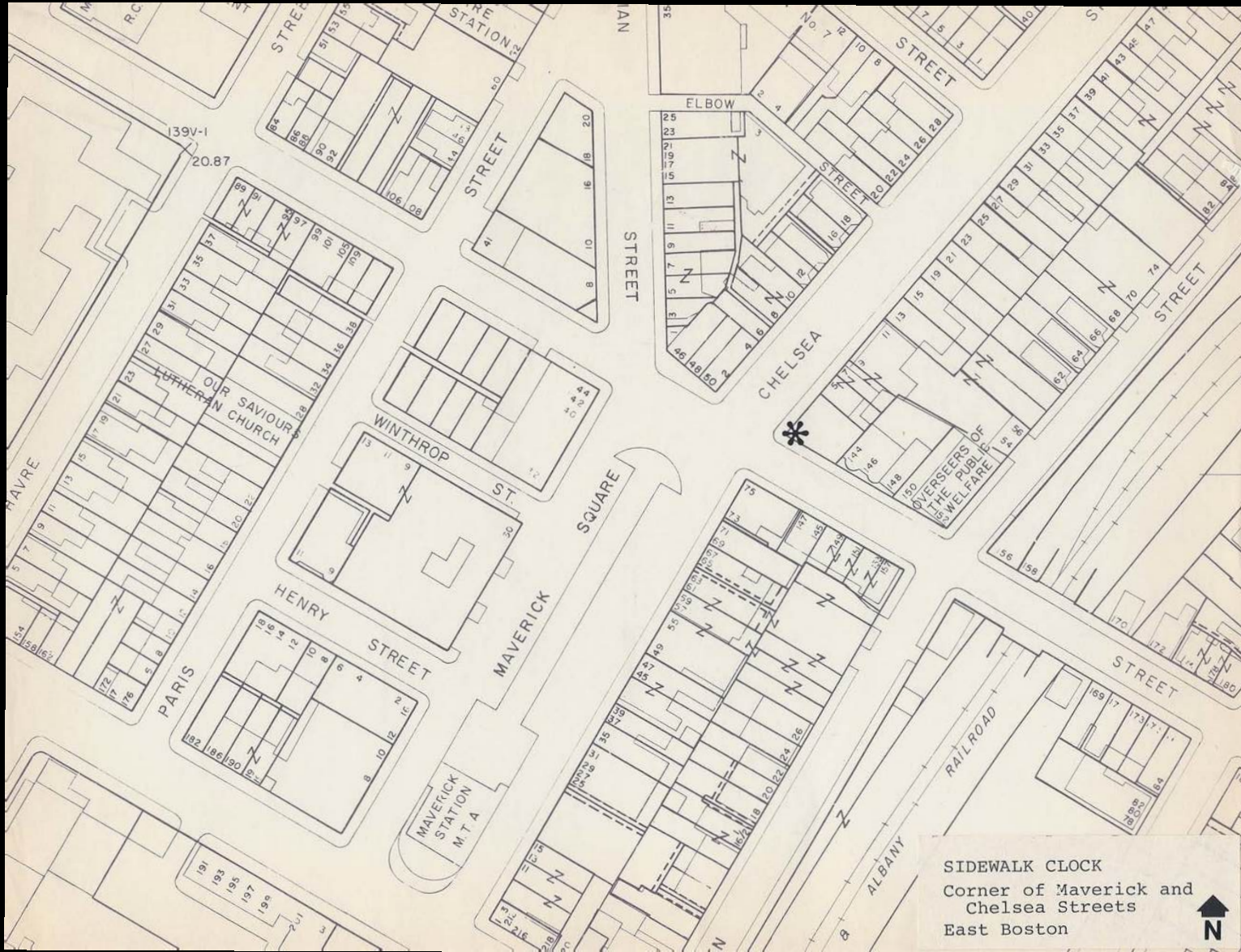
Boston Landmarks Commission - Design Review  
September 26, 2017



# Overview

- The E. Howard Clock was erected between 1908-1915 and originally located in Scollay Square on Court Street
- Moved to East Boston to the parking lot of the former Rapino's Funeral Home (and not the original site unlike other landmark clocks)
- Clock face was damaged around 2010 when it fell from its base and has remained inside the building at 9 Chelsea Street since
- Proposal is to restore the clock to original specifications and re-locate the clock to Central Square in East Boston in partnership with East Boston Main Streets





SIDEWALK CLOCK  
Corner of Maverick and  
Chelsea Streets  
East Boston





Street Clock at 9 Chelsea Street,  
East Boston. Nominated for Landmark  
Designation.



Street Clock at 9 Chelsea Street,  
East Boston. Nominated for Landmark  
Designation.



# Current Neighborhood Context





# Current Neighborhood Context



# Current Neighborhood Context





# Current Neighborhood Context



# Current Neighborhood Context











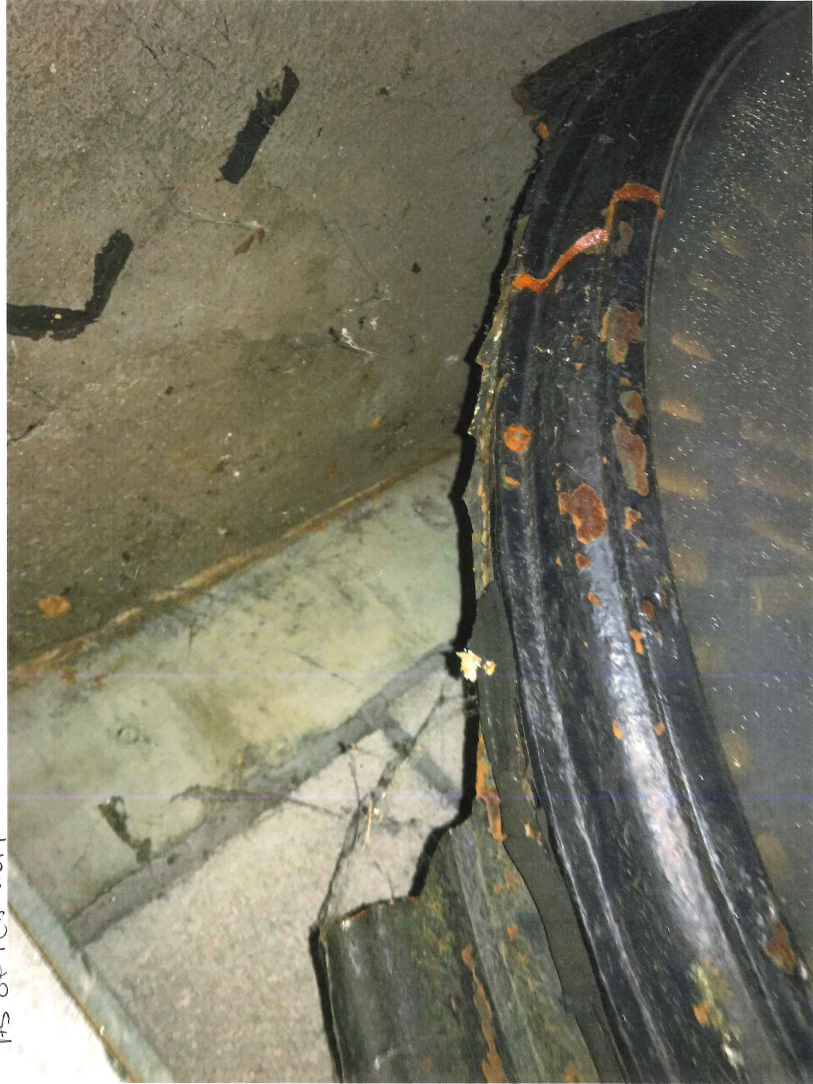




AS of Feb 2017



AS of Feb 2017



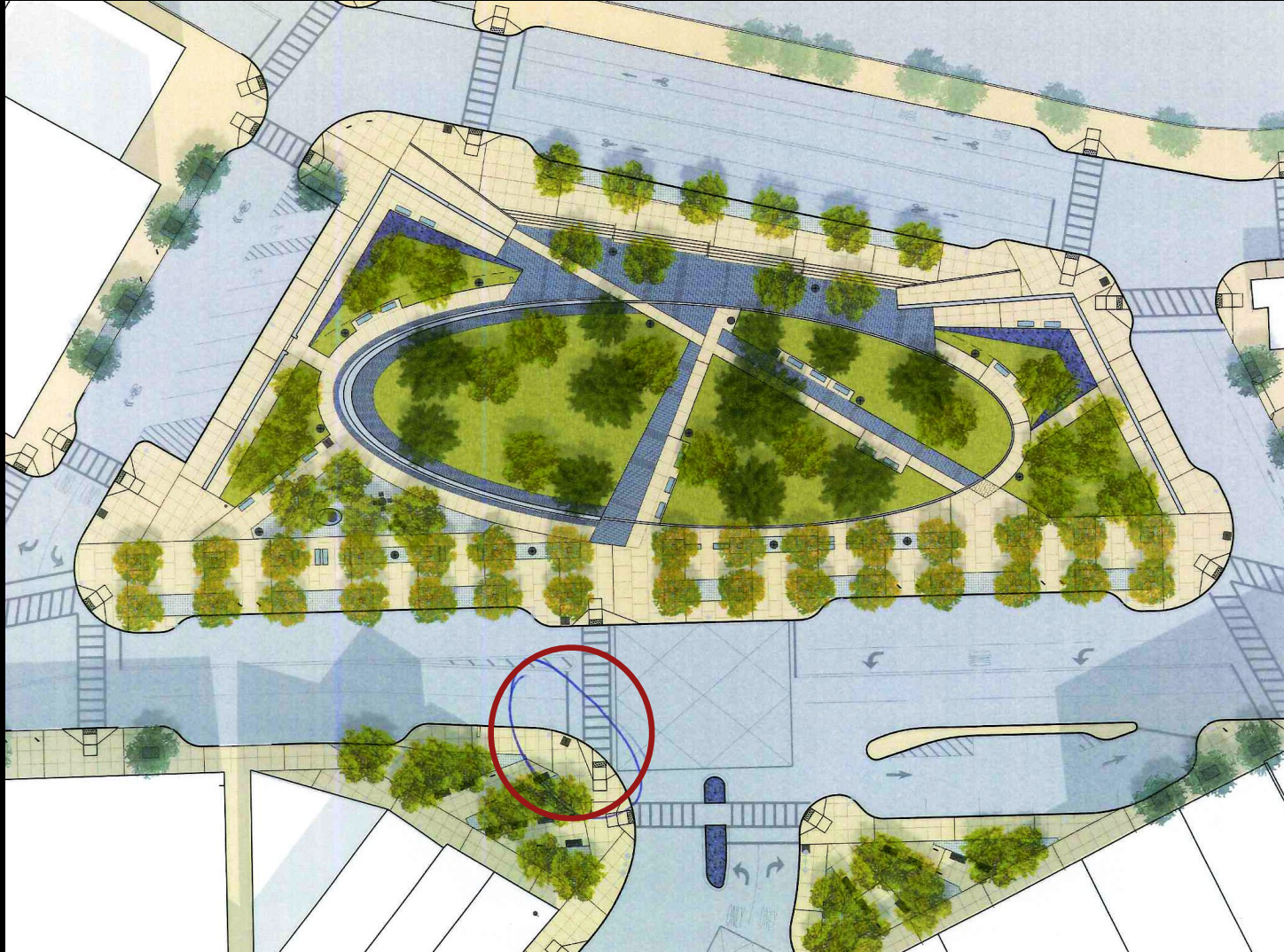


# Replica Street Clock at 20 Maverick Square

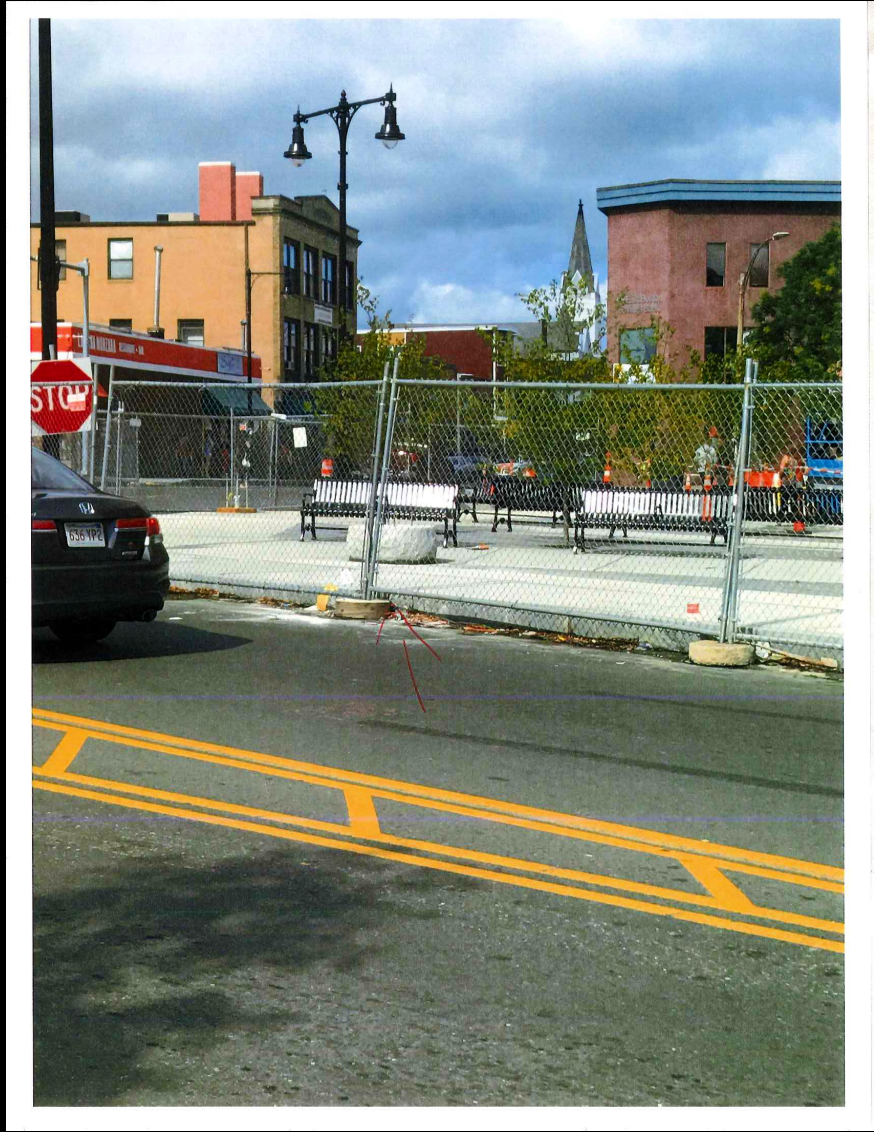
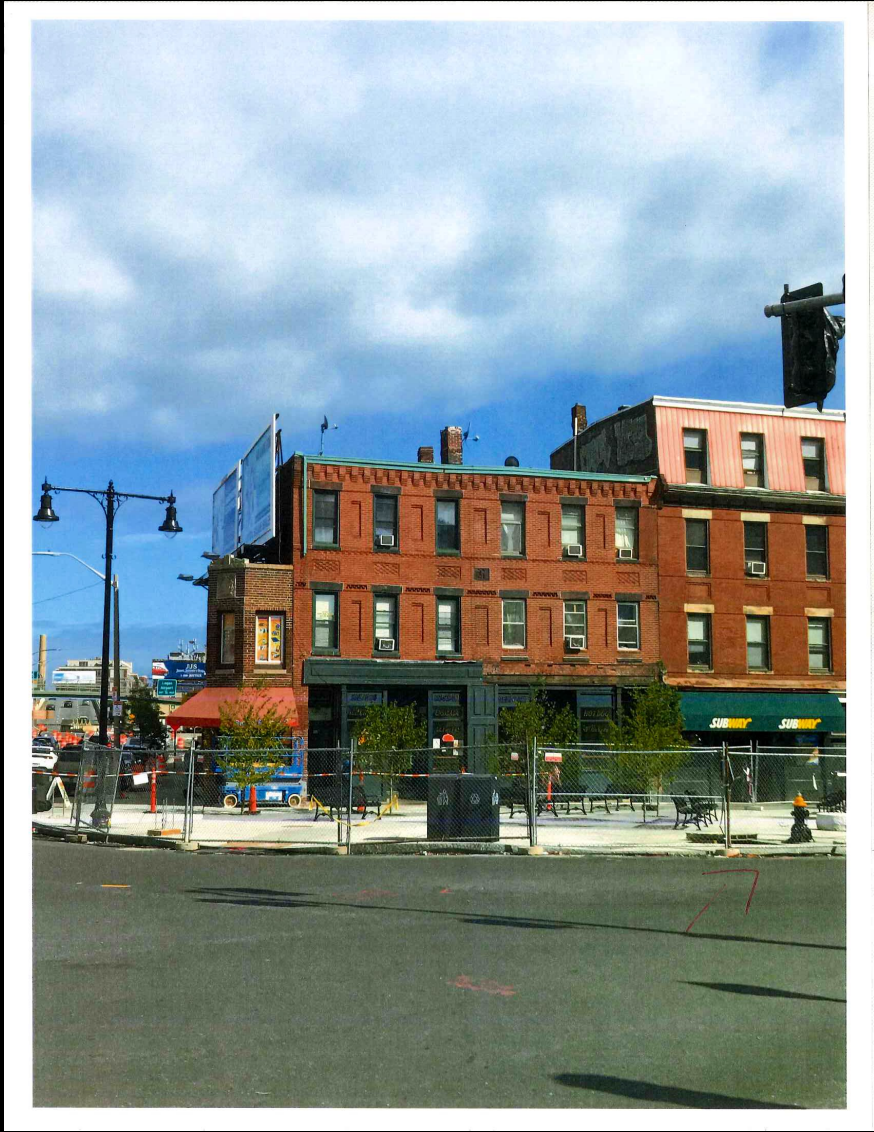




# Plan and Layout of New Central Square

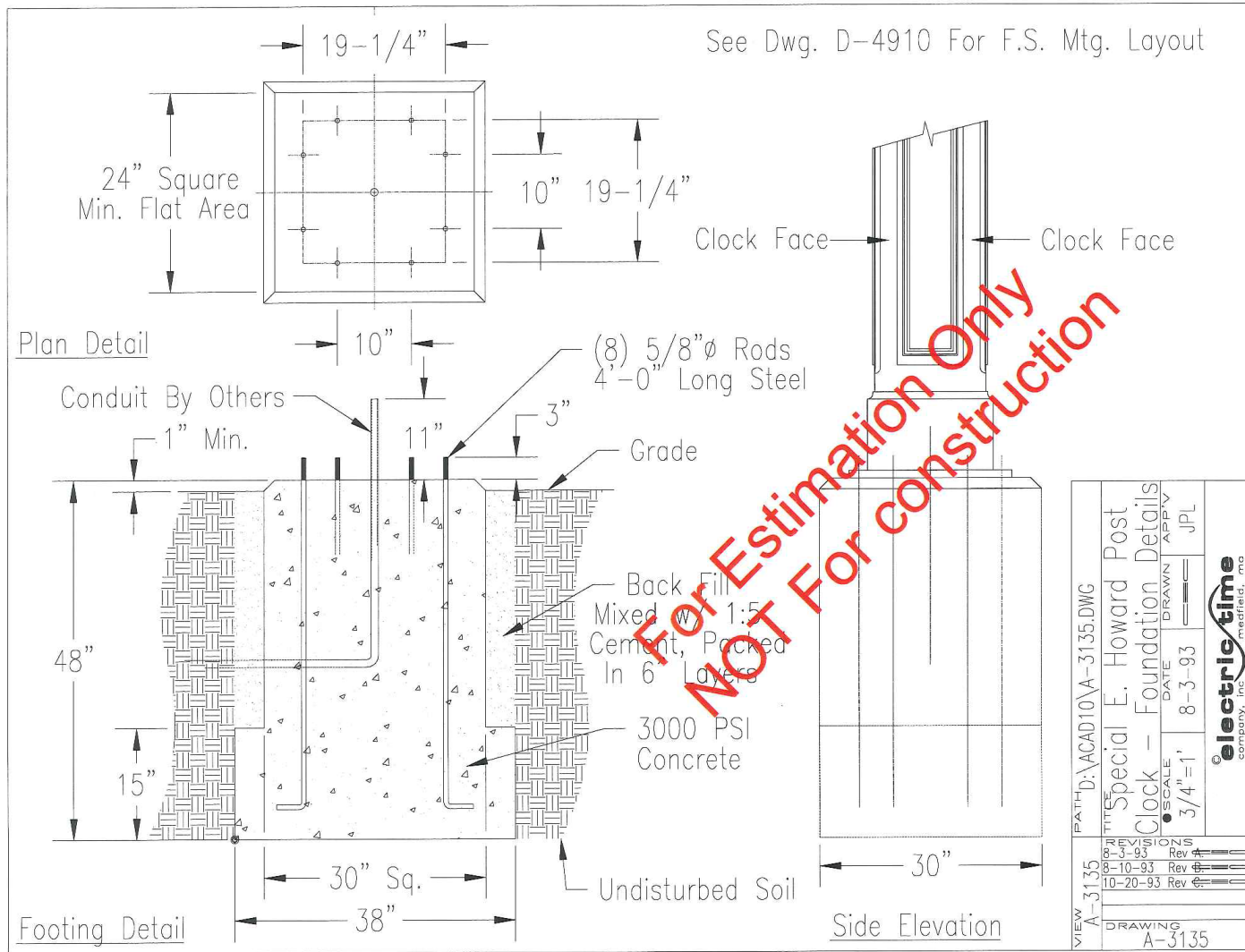




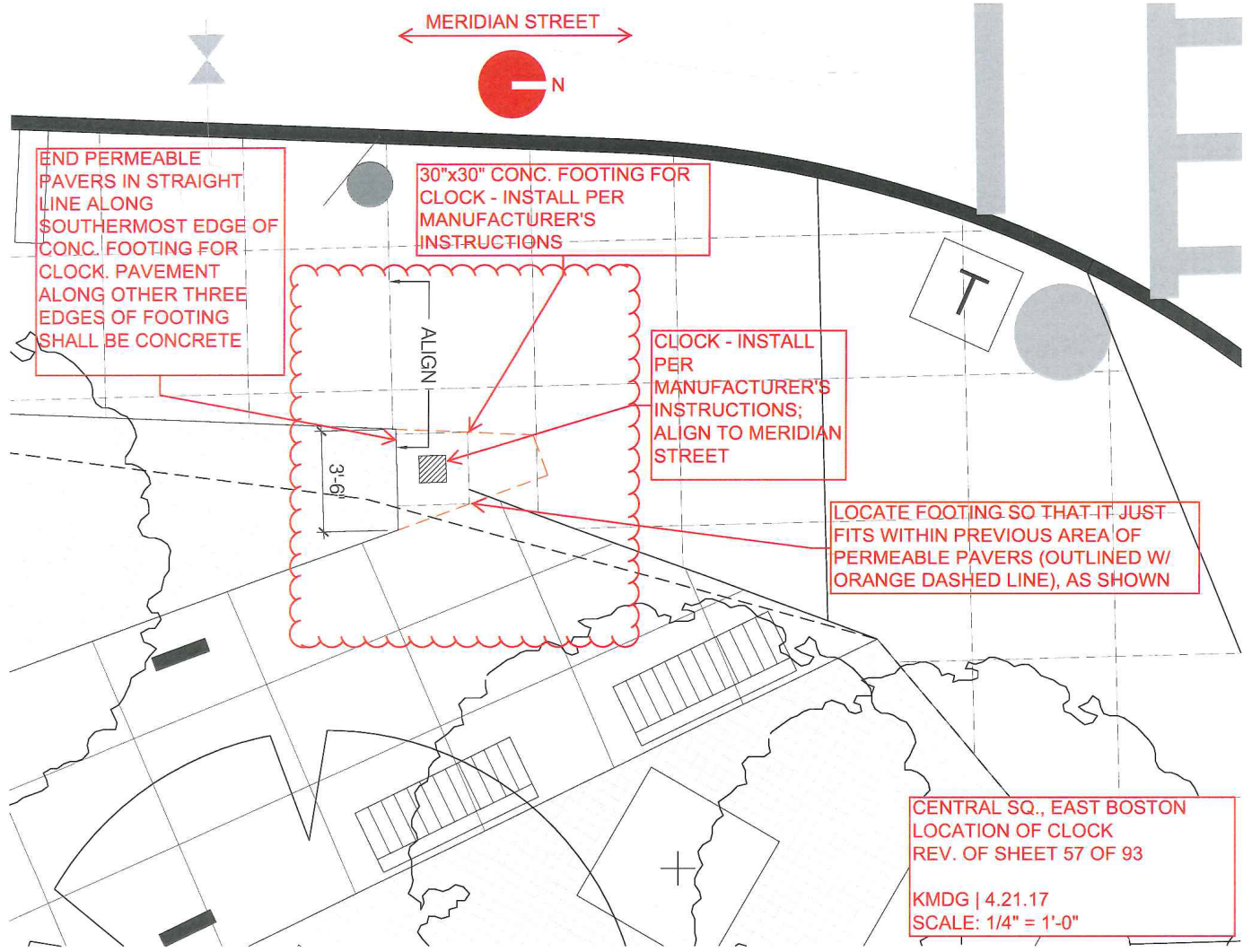












END PERMEABLE  
PAVERS IN STRAIGHT  
LINE ALONG  
SOUTHERMOST EDGE OF  
CONC. FOOTING FOR  
CLOCK. PAVEMENT  
ALONG OTHER THREE  
EDGES OF FOOTING  
SHALL BE CONCRETE

30"x30" CONC. FOOTING FOR  
CLOCK - INSTALL PER  
MANUFACTURER'S  
INSTRUCTIONS

CLOCK - INSTALL  
PER  
MANUFACTURER'S  
INSTRUCTIONS;  
ALIGN TO MERIDIAN  
STREET

LOCATE FOOTING SO THAT IT JUST  
FITS WITHIN PREVIOUS AREA OF  
PERMEABLE PAVERS (OUTLINED W/  
ORANGE DASHED LINE), AS SHOWN

CENTRAL SQ., EAST BOSTON  
LOCATION OF CLOCK  
REV. OF SHEET 57 OF 93

KMDG | 4.21.17  
SCALE: 1/4" = 1'-0"



April 27, 2017

Greg Droc  
Liner Retail  
Five Burlington Woods Drive, S. 107  
Burlington, MA 01803

Subject: Maverick Square Clock Restoration - East Boston, MA

Dear Greg:

Per your conversations with Tom Erb of our office, I would like to summarize the initial scope of this project. Please sign and return a copy of this letter for us, and we will then prepare a formal agreement.

We are pleased to quote on the restoration of the Historic Sculley Square/East Boston Post Clock. The clock head was extremely damaged when it was knocked over. It would be great to save the original cast iron dials, as this is a fairly rare example of an E. Howard Street Clock. Most clocks had translucent glass dials. 40 years ago, we purchased the original patterns for the case of this clock, and we can and will cast in iron historically accurate header, saddle, dials and crystal rings and, if needed, a new post.

#### Scope

Restoration of Maverick Square post clock, to include:

- New cast iron post.
- Repair & re-use of existing cast iron dials.
- New cast iron header and saddle.
- New cast iron dial rings.
- New cast iron crystal rings.
- LED edge lighting controlled by a photo cell.
- Clear tempered glass crystals.
- Raised header lettering, lettering to be selected.
- Automatic 99B-MI Tower clock control, with GPS receiver for atomic time
- Exterior surfaces of the street clock to have a matte black polyurethane painted finish with gold paint highlighting and satin clear top coat.
- Black painted clock dials.
- Gold painted dial markings and hands.
- New Electric Time Style B28-MI Clock movements.

ELECTRIC TIME COMPANY, INC. 97 WEST STREET - MEDFIELD, MA USA 02052  
PHONE 508-359-4396 - FAX 508-359-4482 SALES@ELECTRICTIME.COM  
[HTTP://WWW.ELECTRICTIME.COM](http://www.electrictime.com)

All of the above for the net (BUY) price of \$16,618.00, including delivery. This price does not include the MA State 6.25% sales tax. If this project is tax exempt, please provide us with a copy of your certificate.

**Notes**

We would like to pickup the cast iron and miscellaneous parts immediately from the construction site.

The post is buried under 6"+ of concrete. If it can be freed in good condition, you may deduct \$1,500.00 from the above estimate. We can send a truck to the project site to pick the post up, but given the weight it must be loaded by the contractor on site.

This clock can be added to the yearly service contract that we have with the City of Boston for a nominal cost.

**Options**

We can re-install the clock on site for an additional \$2,065.00. *Please specify if desired when ordering.*

We can provide a small cast bronze plaque detailing clock history to be attached to clock - depending on amount of text, this would be between \$200.00 and \$750.00 additional. *Please specify if desired when ordering.*

As a further option, we can offer 23K gold leaf hands, dial markings and highlighting (in lieu of the gold painted highlights) for an additional \$3,100.00. *Please specify if desired when ordering.*

Since this equipment is custom built, on orders over \$1000.00 we require a 40% deposit. Installation will be 12 to 15 weeks after receipt of purchase order, deposit and release, F.O.B., Medfield, MA. Please see enclosed Standard Terms and Conditions of Sale.

If I can be of any further assistance please let me know.

Sincerely,

*Juliana Small*

Juliana Small  
Customer Service  
jsmall@electrictime.com

Please sign below as proof of approval:

Signature

Company

Date