

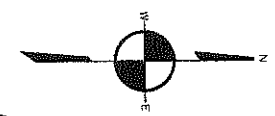
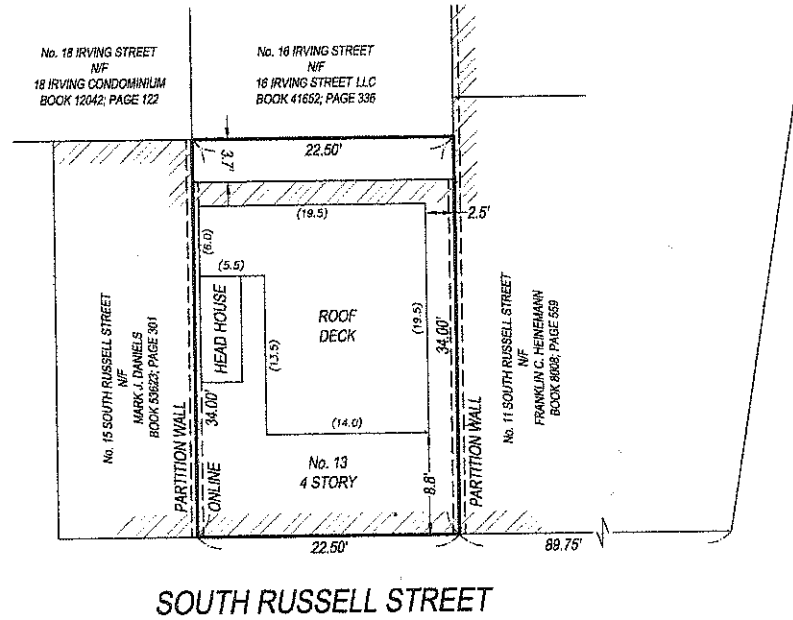


**REFERENCES:**  
 DEED: BK 9756; PG 180

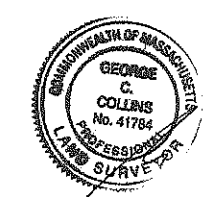
**NOTES:**  
 PARCEL ID: 0300195008

I CERTIFY THAT THIS PLAN WAS MADE FROM AN INSTRUMENT SURVEY ON THE GROUND ON THE DATE OF MARCH 29, 2017 AND ALL STRUCTURES ARE LOCATED AS SHOWN HEREON.

ACCORDING TO THE FEDERAL EMERGENCY MANAGEMENT AGENCY (F.E.M.A.) MAPS, THE MAJOR IMPROVEMENTS ON THIS PROPERTY FALL IN AN AREA DESIGNATED AS ZONE "X" (AREA DETERMINED TO BE OUTSIDE 0.2% ANNUAL CHANCE FLOODPLAIN), COMMUNITY-PANEL # 25025C0077J EFFECTIVE DATE: 03/16/2016



CAMBRIDGE STREET



FIELD BOOK	PAGE	INSP. BY	DRAFT. BY	CHECKED BY
		GCC	NPP	GCC
SCALE: 1 INCH = 10 FEET				
DATE: MARCH 29, 2017				
JOB #17-00206				
FILE #17-00206				

**CERTIFIED PLOT PLAN**  
 LOCATED AT  
**13 SOUTH RUSSELL STREET**  
 BOSTON, MA

PREPARED FOR:  
 13 SOUTH RUSSELL STREET  
 CONDOMINIUM

**BOSTON SURVEY, INC.**  
 UNIT C4 SHIPWAY PLACE  
 CHARLESTOWN, MA 02129  
 (617) 242-1313

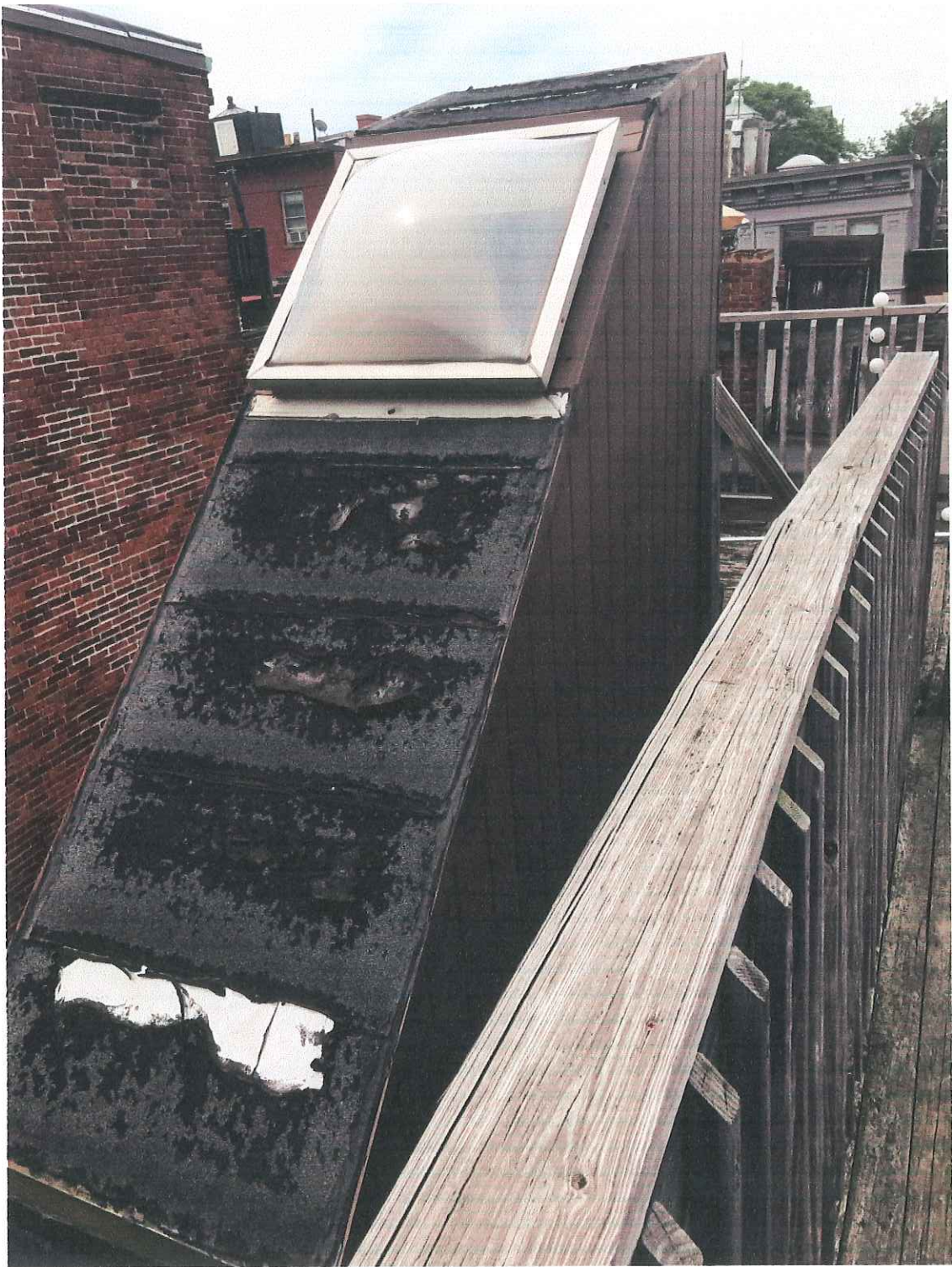
18.135BH



13 SOUTH RUSSELL STREET  
18.155 BH



13 SOUTH RUSSELL STREET  
18.155BH



13 SOUTH RUSSELL STREET

18.155 BH



13 SOUTH RUSSELL STREET  
18.155 BH



13 SOUTH RUSSELL STREET  
18.155 BH

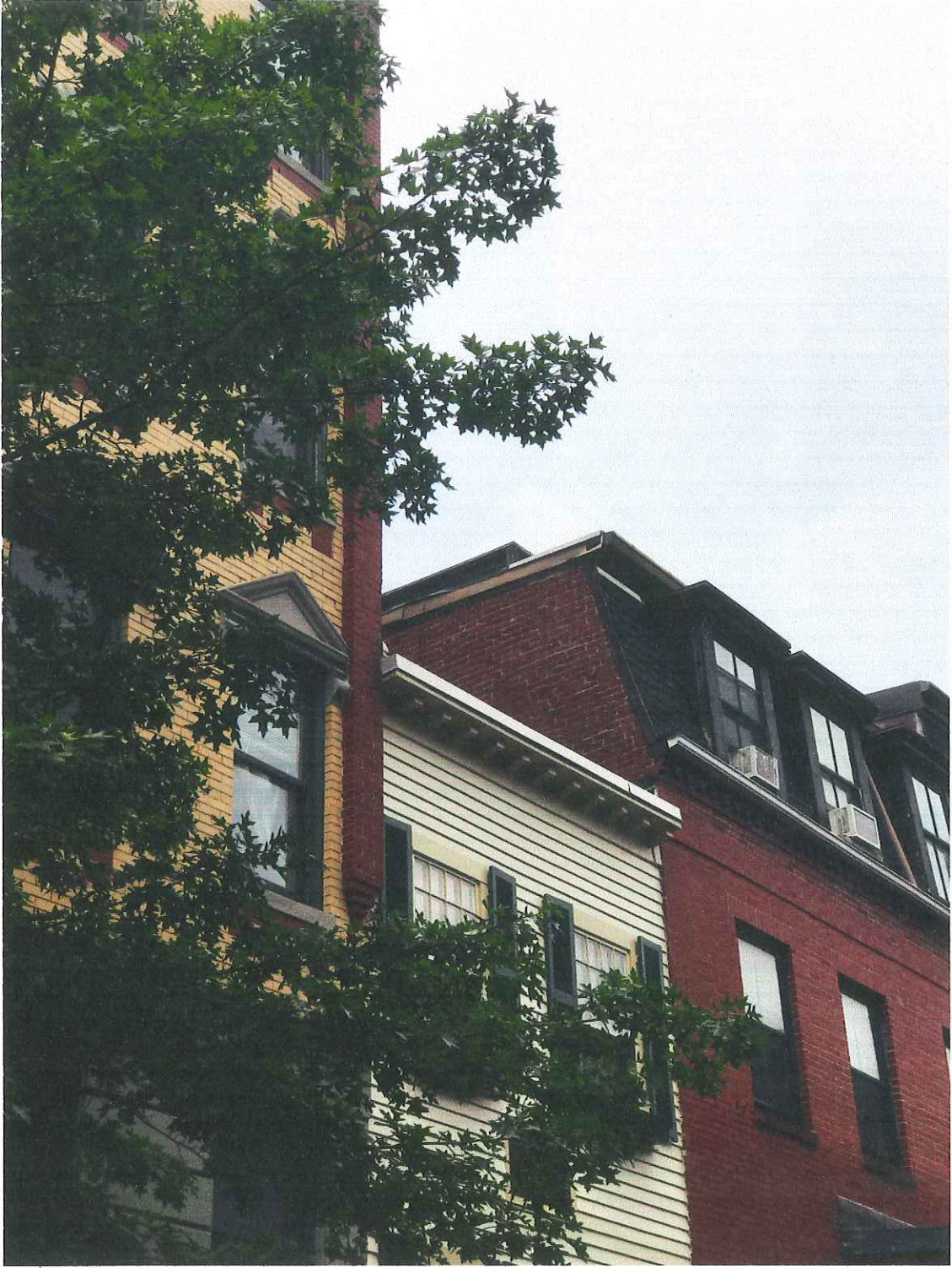


13 SOUTH RUSSELL STREET  
18.155BH





13 SOUTH RUSSELL STREET  
18.155BH



13 SOUTH RUSSELL STREET  
18.155 BH