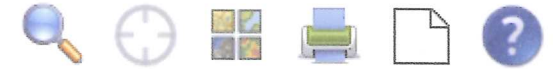




Boston Tax Parcel Viewer



COMMONWEALTH AVENUE



390

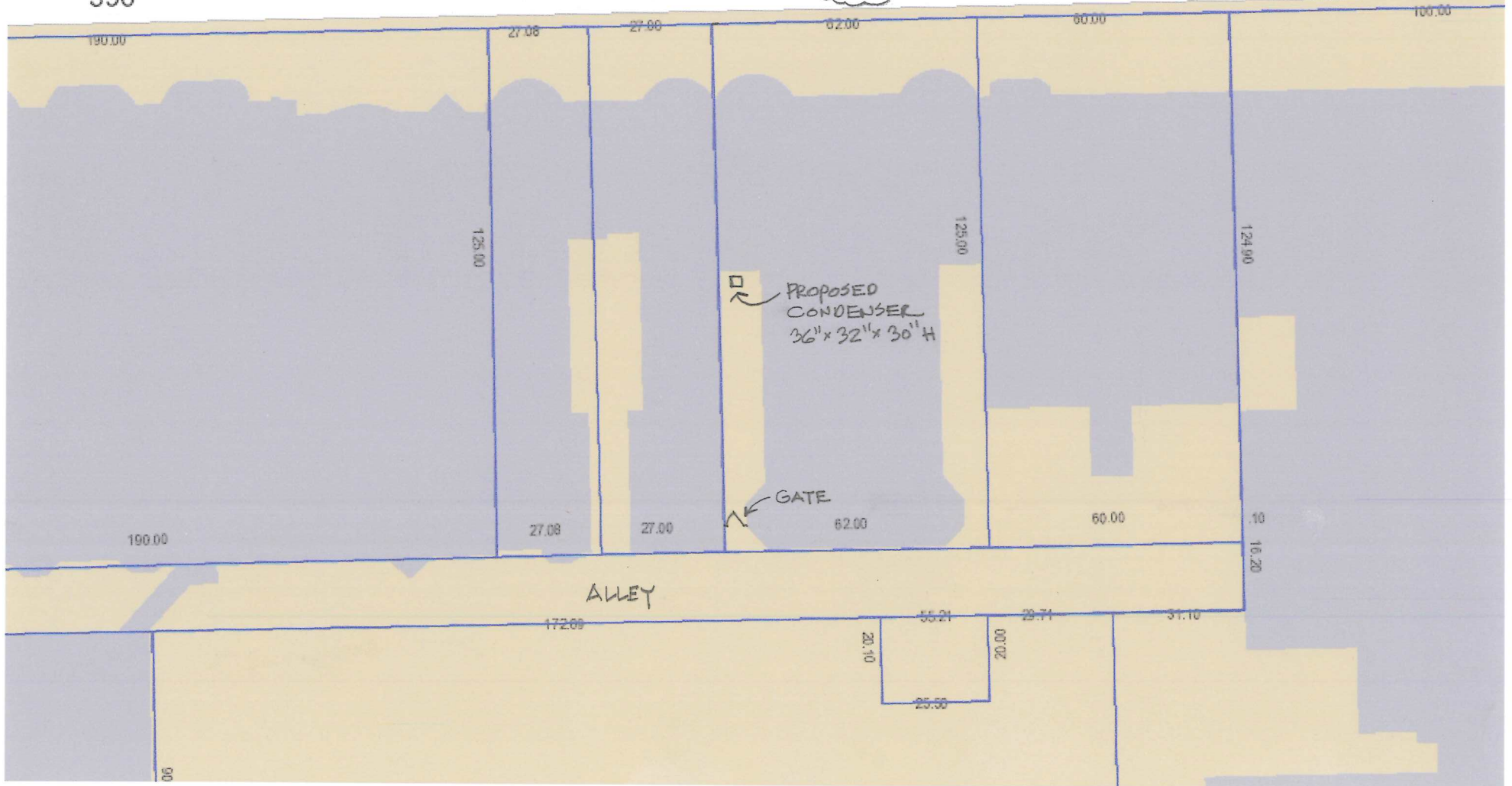
386

384

382

380

374





382 Commonwealth Avenue
View from rear



382 Commonwealth Avenue
View of gate from alley



Proposed
condenser
location

382 Commonwealth Avenue -
View of Passageway



382 Commonwealth Avenue
View of Rear Gate

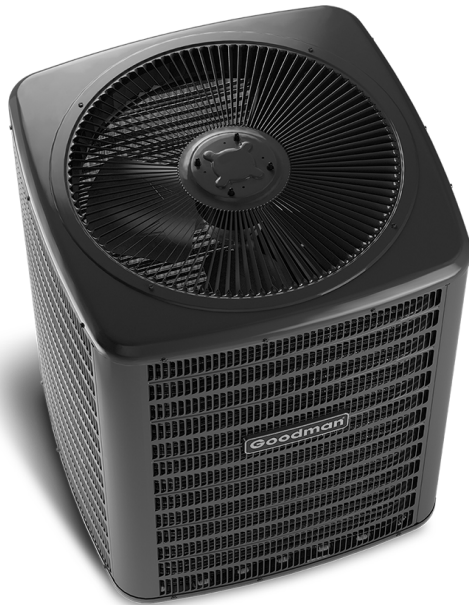


Air Conditioning & Heating

GSX14

COOLING CAPACITY : 18,000 - 60,000 BTU/H

ENERGY-EFFICIENT SPLIT SYSTEM AIR CONDITIONER UP TO 15 SEER & 12.5 EER



Contents

Nomenclature.....	2
Product Specifications.....	3
Expanded Cooling Data.....	5
Performance Data.....	29
AHRI Ratings.....	31
Wiring Diagrams.....	72
Dimensions.....	74
Accessories.....	74

382 Commonwealth Avenue

Proposed HVAC condenser
29" x 29" x 32" tall
14 SEER

Standard Features

- Energy-efficient compressor
- Single-speed condenser fan motor
- Factory-installed filter drier
- Copper tube/aluminum fin coil
- Service valves with sweat connections and easy-access gauge ports
- Contactor with lug connection
- Ground lug connection
- AHRI Certified; ETL Listed

Cabinet Features

- Heavy-gauge galvanized-steel cabinet with a louvered sound control top
- Attractive Architectural Gray powder-paint finish with 500-hour salt-spray approval
- Steel louver coil guard
- Top and side maintenance access
- Single-panel access to controls with space provided for field-installed accessories
- When properly anchored, meets the 2010 Florida Building Code unit integrity requirements for hurricane-type winds (Anchor bracket kits available.)



* Complete warranty details available from your local dealer or at www.goodmanmfg.com. To receive the 10-Year Parts Limited Warranty, online registration must be completed within 60 days of installation. Online registration is not required in California or Quebec.