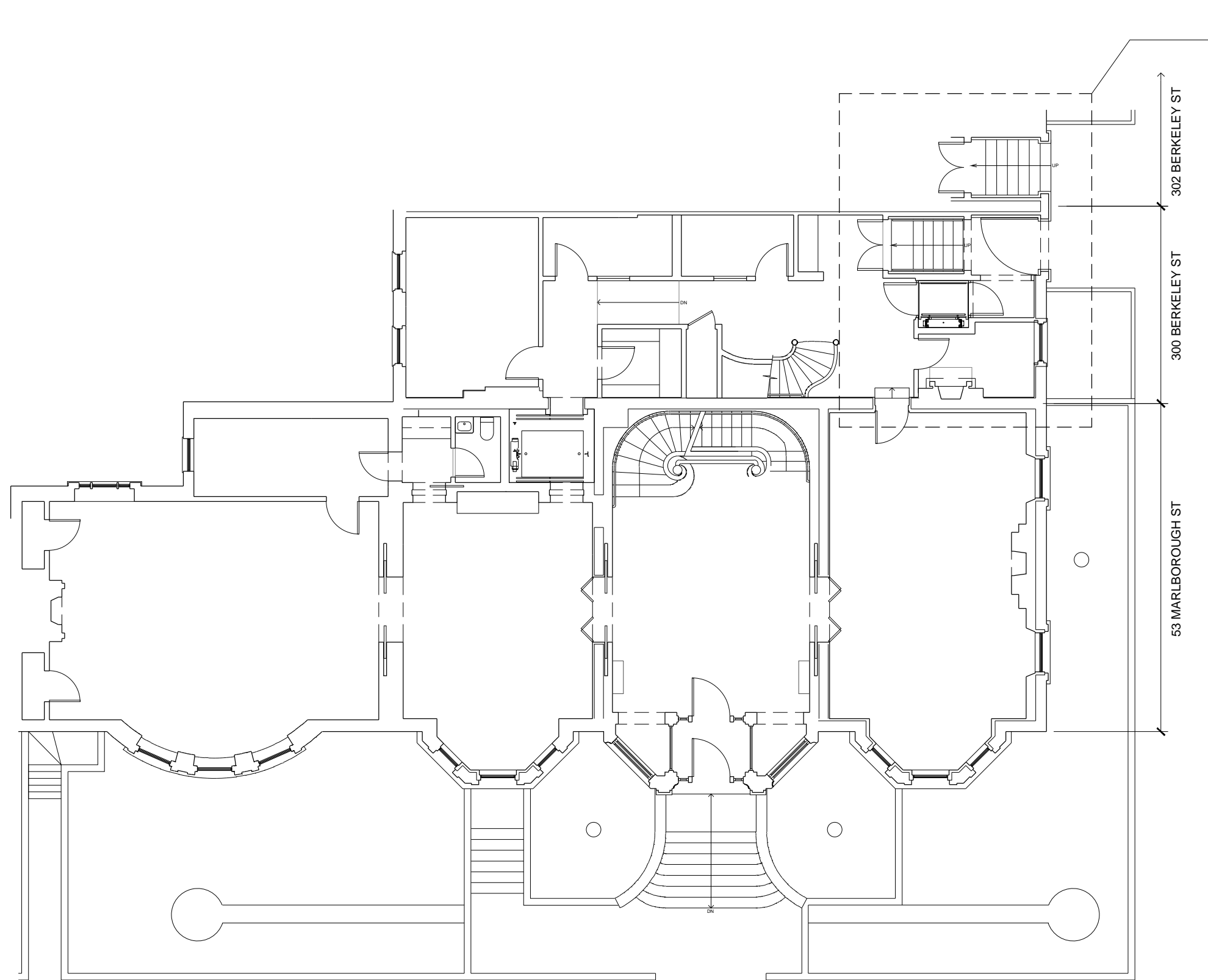




FRENCH CULTURAL CENTER
53 MARLBOROUGH / 300 BERKELEY STREET
6.20.2017

STERN McCafferty



AREA OF PLAN DETAIL
SHOWN DASHED

302 BERKELEY ST

300 BERKELEY ST

53 MARLBOROUGH ST

BERKELEY STREET

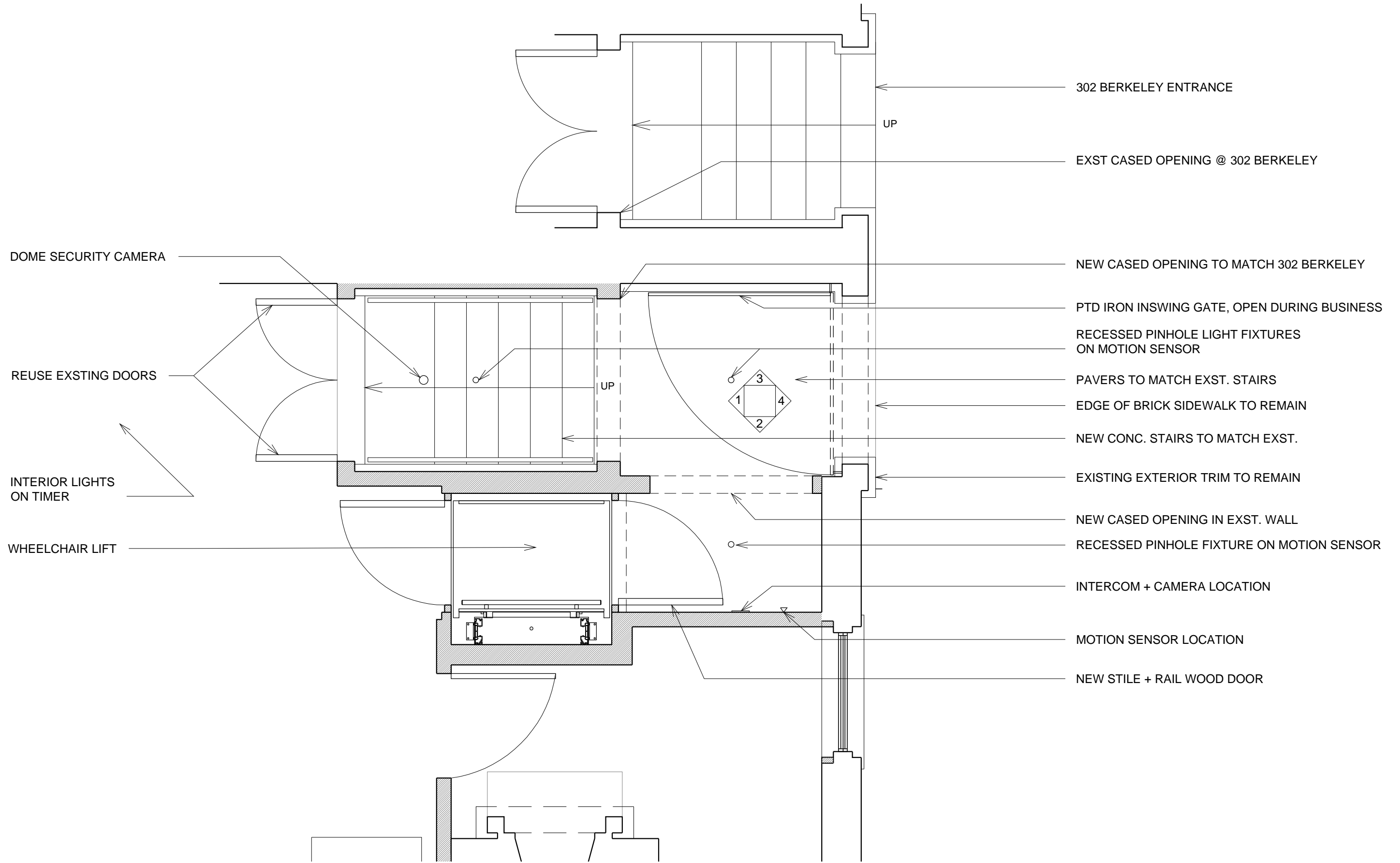
MARLBOROUGH STREET

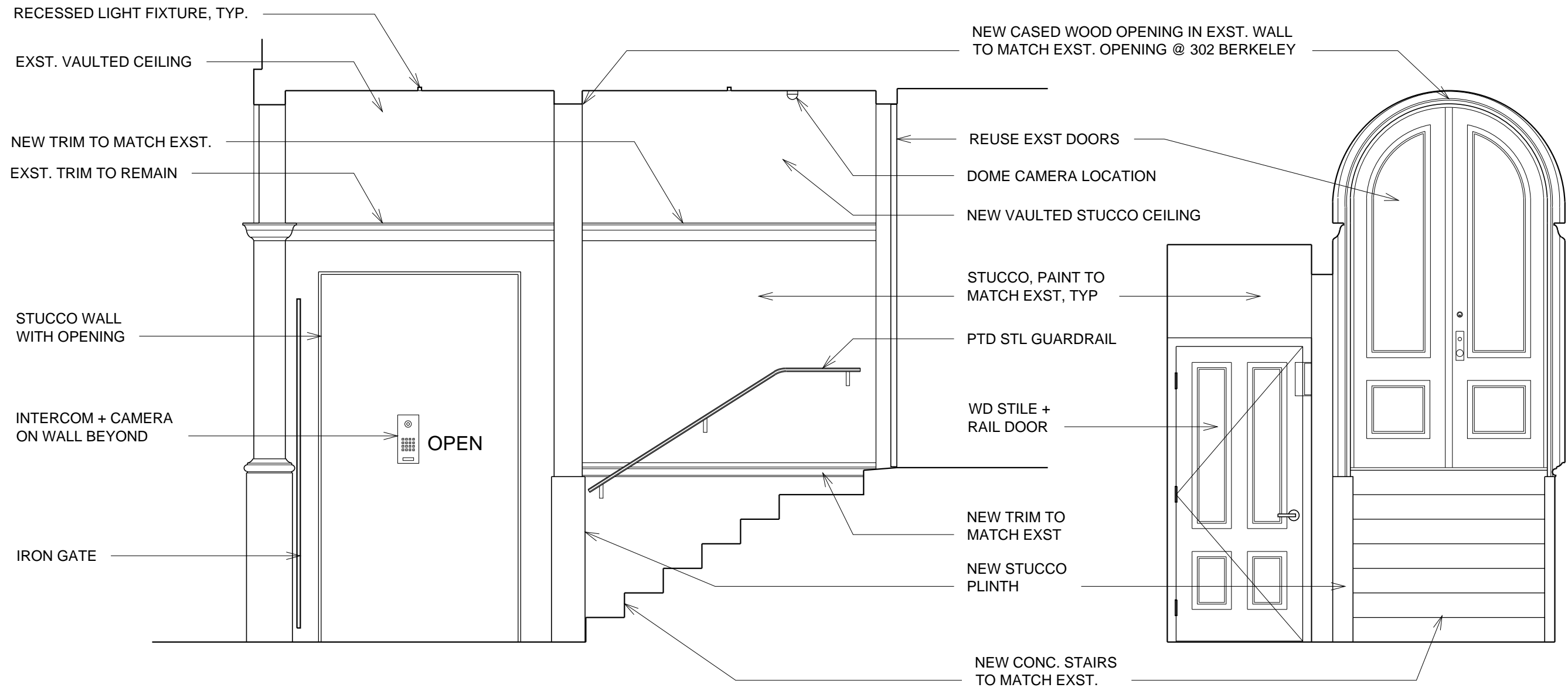
FRENCH CULTURAL CENTER
53 MARLBOROUGH / 300 BERKELEY STREET

PROPOSED FIRST FLOOR PLAN

SCALE: 3/32" = 1'-0"

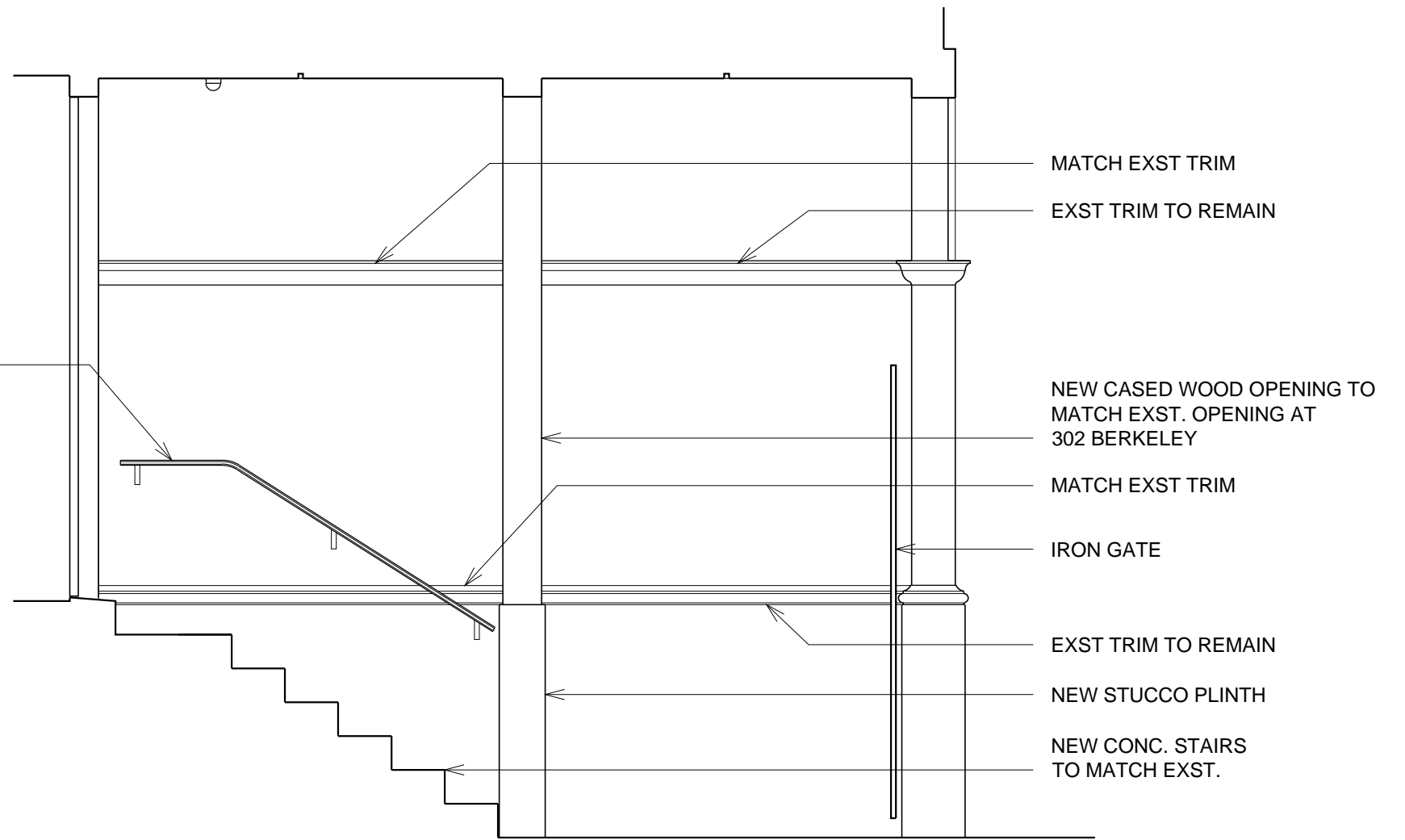
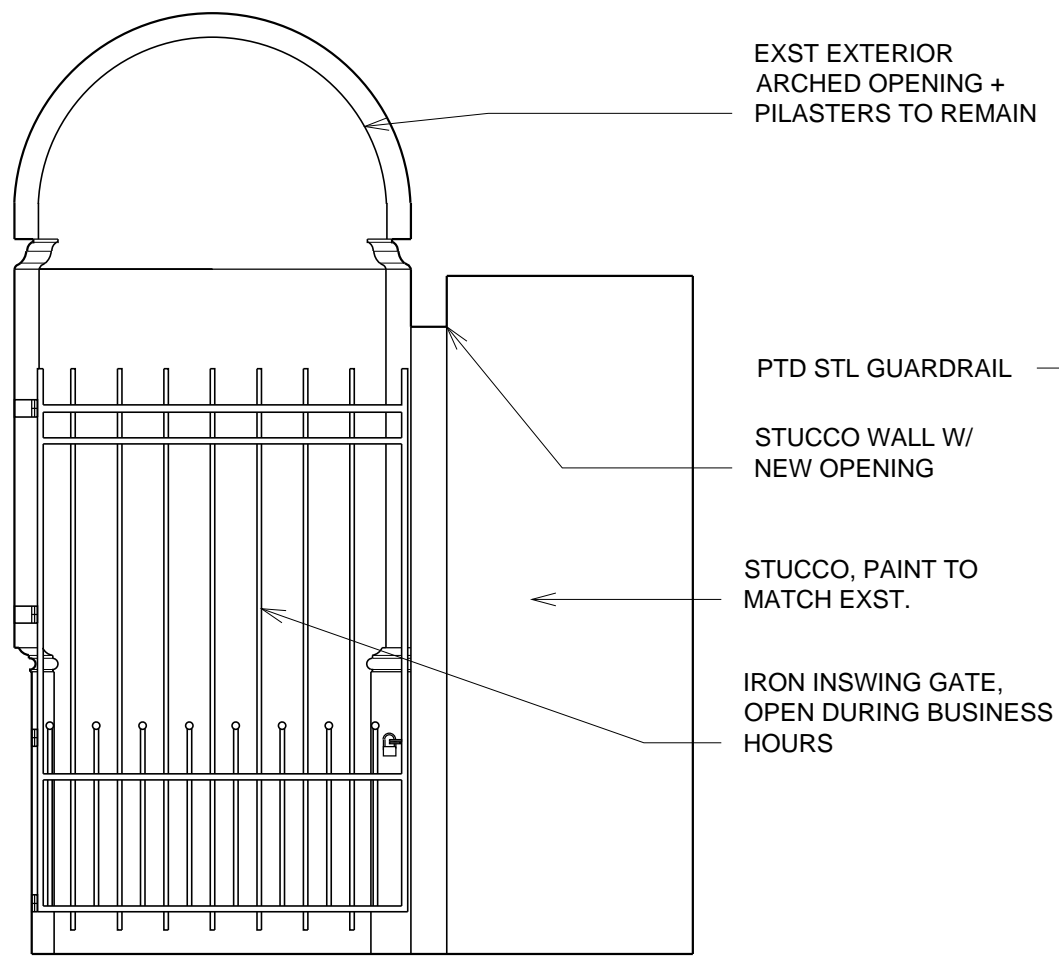
DATE: 6.20.2017





2 BERKELEY ENTRY FACING SOUTH
3/8" = 1'-0"

1 BERKELEY ENTRY FACING WEST
3/8" = 1'-0"



4 BERKELEY ENTRY FACING EAST
3/8" = 1'-0"

3 BERKELEY ENTRY FACING NORTH
3/8" = 1'-0"



2 PROPOSED BERKELEY STREET FACADE
1/8" = 1'-0"



1 EXISTING BERKELEY STREET FACADE
1/8" = 1'-0"



FRENCH CULTURAL CENTER
53 MARLBOROUGH / 300 BERKELEY STREET

PROPOSED BERKELEY STREET ELEVATION

SCALE: 3/8" = 1'-0"
DATE: 6.20.2017



53 MARLBOROUGH FENCE



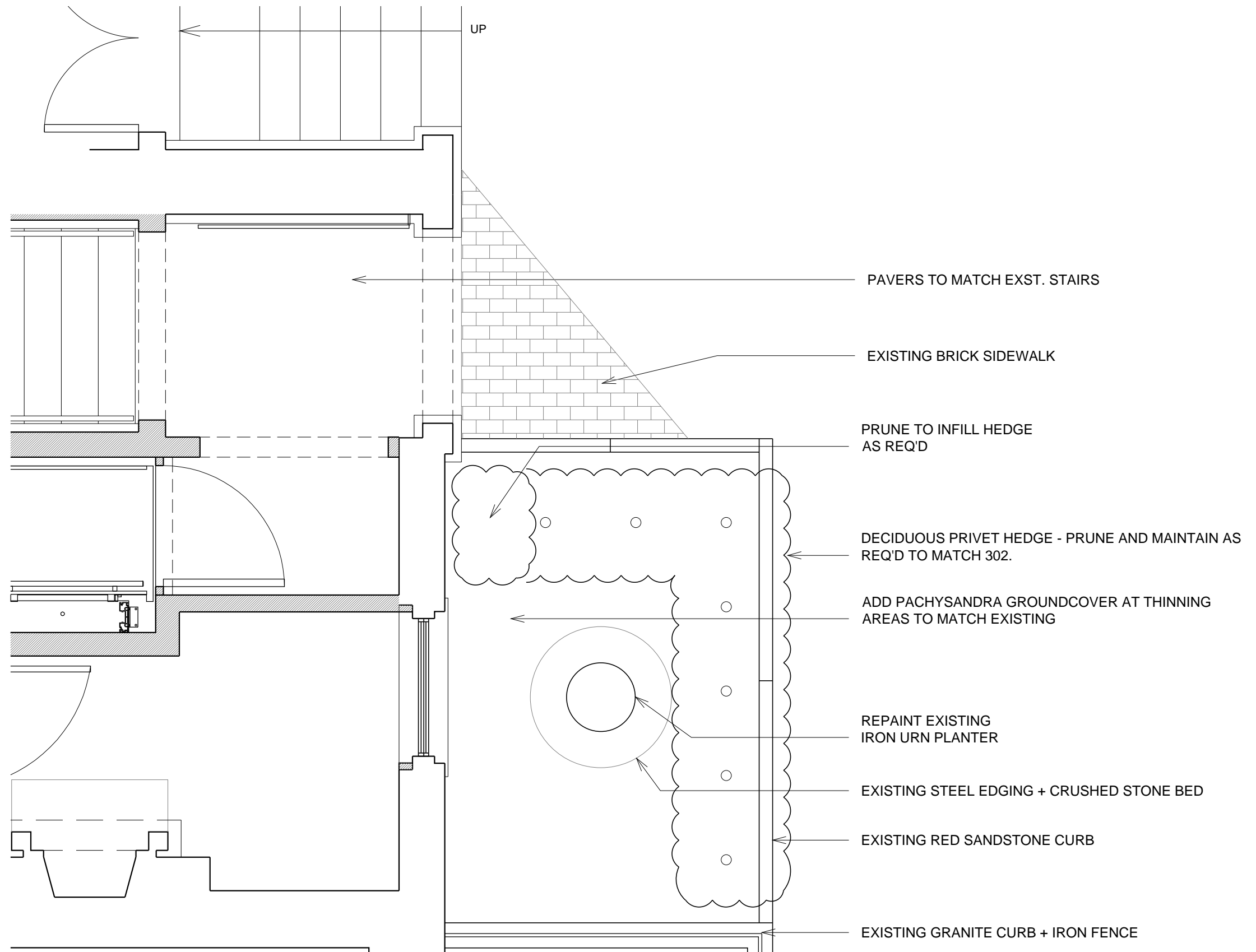
300 BERKELEY GARDEN



FRENCH CULTURAL CENTER
53 MARLBOROUGH / 300 BERKELEY STREET



EXTERIOR PHOTOS
DATE: 6.20.2017





300 BERKELEY GARDEN



302 BERKELEY GARDEN

m² MINI-MICRO™ RECESSED DOWNLIGHT

DM



MATERIAL



FOR USE WITH



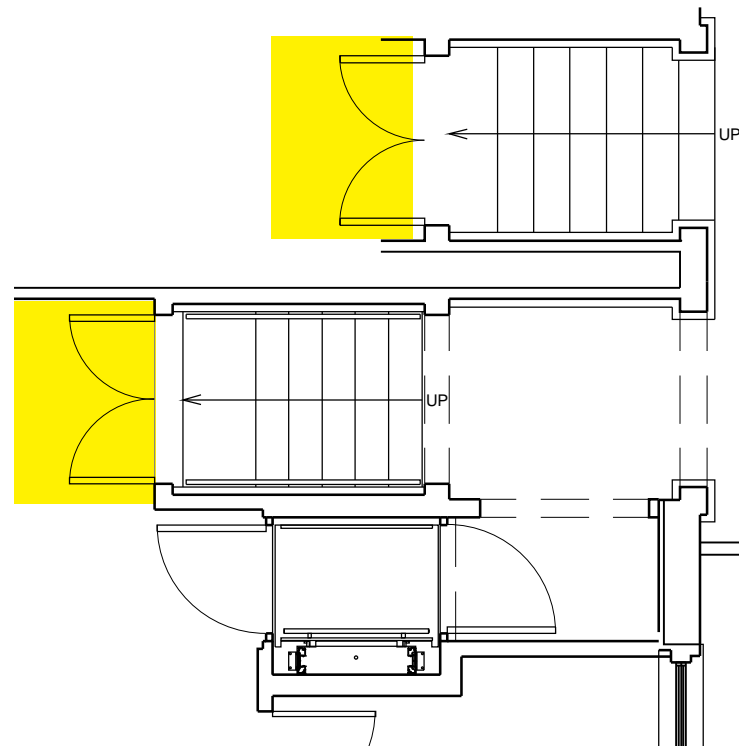
Power Supplies



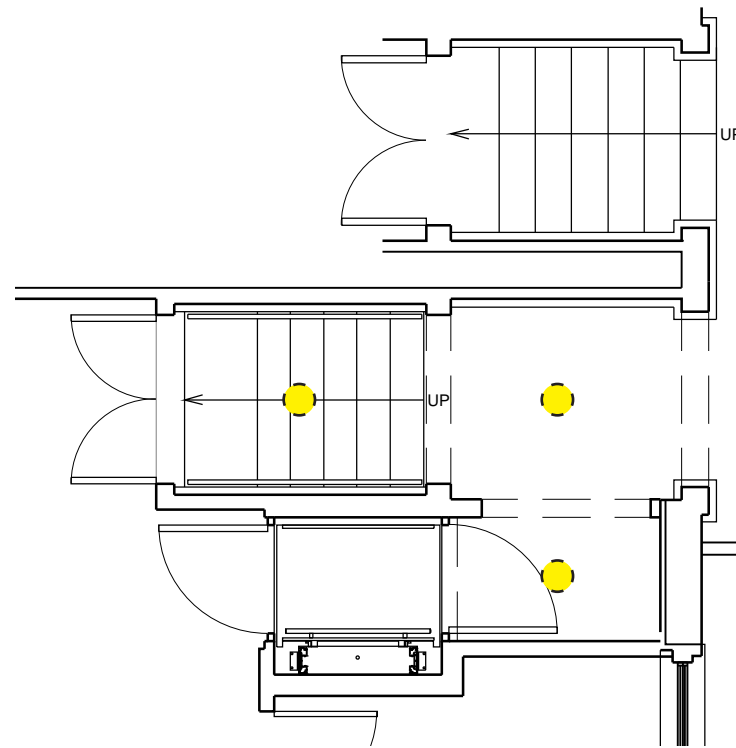
Options

"Quality and sustainability are non-negotiable when I specify exterior light fixtures which is why I specify B-K Lighting. I know when I visit a site years later, the last thing I need to worry about are my B-K fixtures."

Melissa Sparks, CD+M Lighting Design Group, LLC, BKU Spring 2012



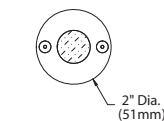
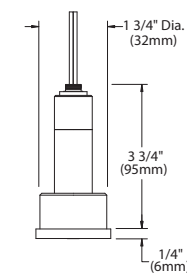
A: INTERIOR LIGHT ON TIMER



B: RECESSED DOWNLIGHTS ON TIMER AND MOTION SENSOR



Shown in Satin Aluminum (SAP) finish



Siedle Steel

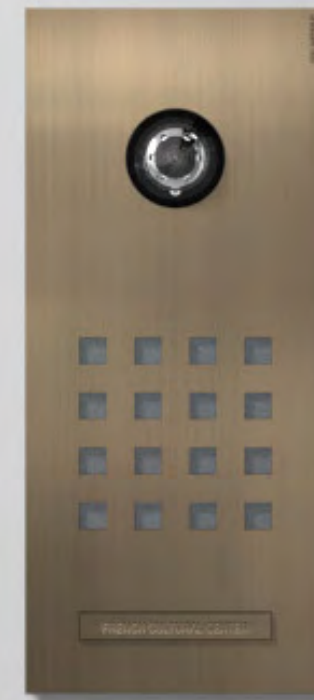
Your configuration

Operating level: Burnished brass

Mounting level: Micaceous dark grey

Price on request

Recommended retail price including VAT, valid in Great Britain. > More

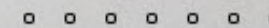


Add configuration to system

Reset configuration

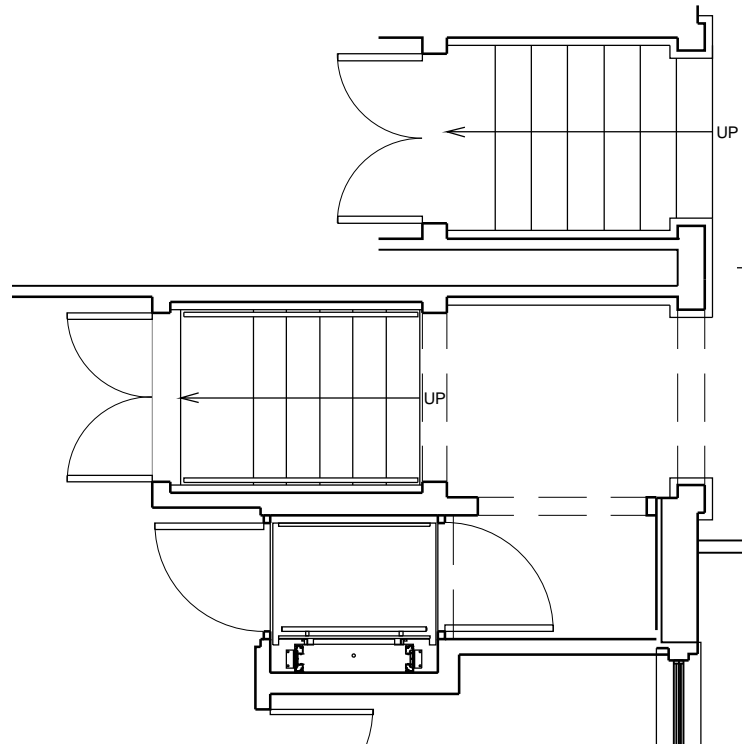
View overall system

Back to start page

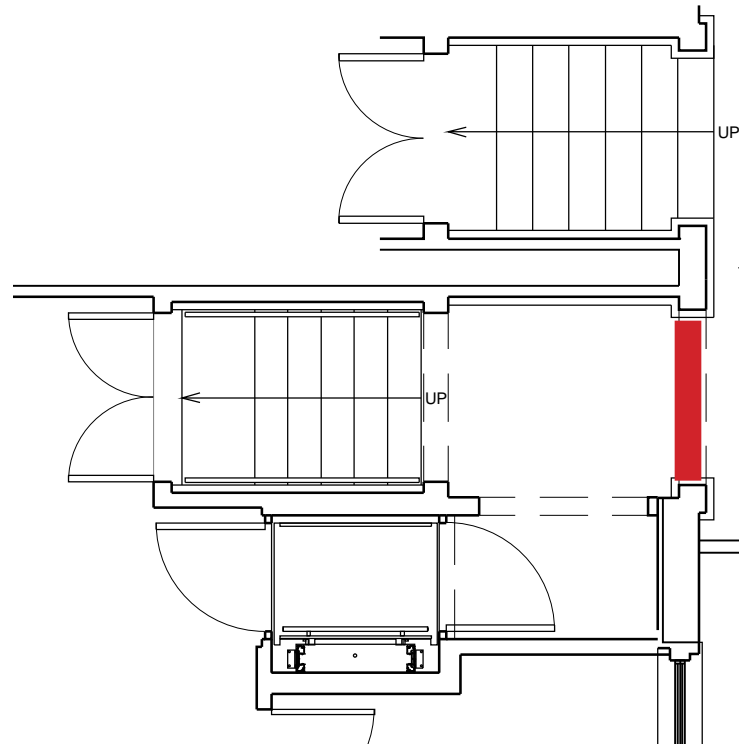


360°

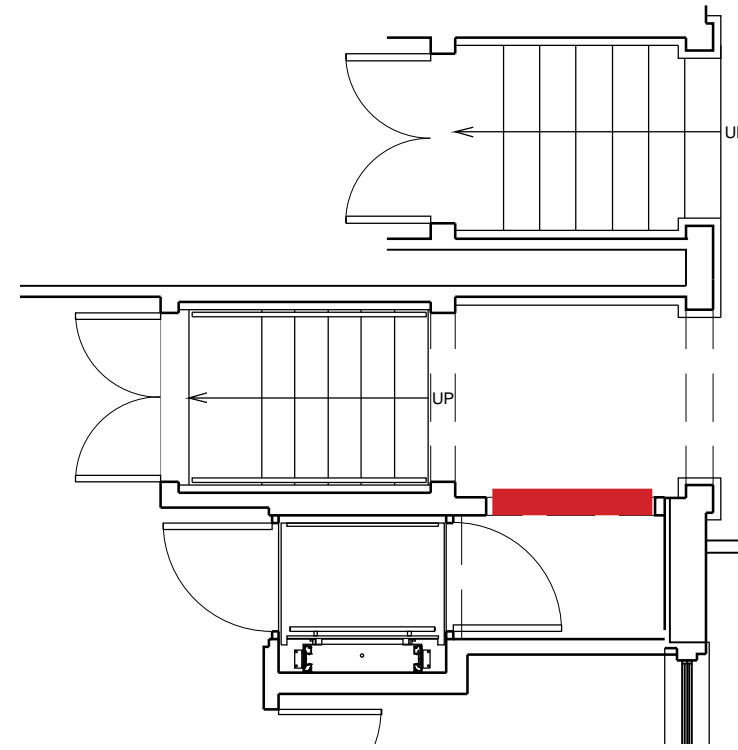
<p>Operating level ⓘ</p> <p>Mounting level ⓘ</p>	<p>Basic functions</p>	<p>Access control</p>	<p>Light</p>	<p>Letterboxes</p>	<p>Dimensions</p> <p>154 mm x 350 mm</p> <p>Change</p> <p>Installation type Flush mounting ⓘ</p> <p>Change</p> <p><input type="checkbox"/> With pilfer safeguard ⓘ</p>
--	------------------------	-----------------------	--------------	--------------------	--



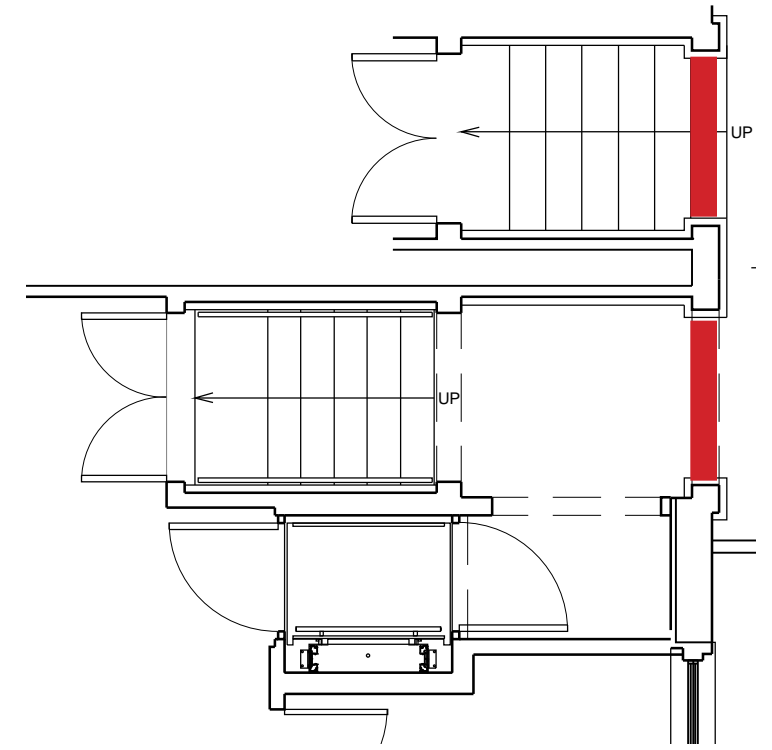
A: NO GATES (note: a gate could be installed at a later point if other security measures are deemed inadequate)



B: 300 BERKELEY FACADE GATE



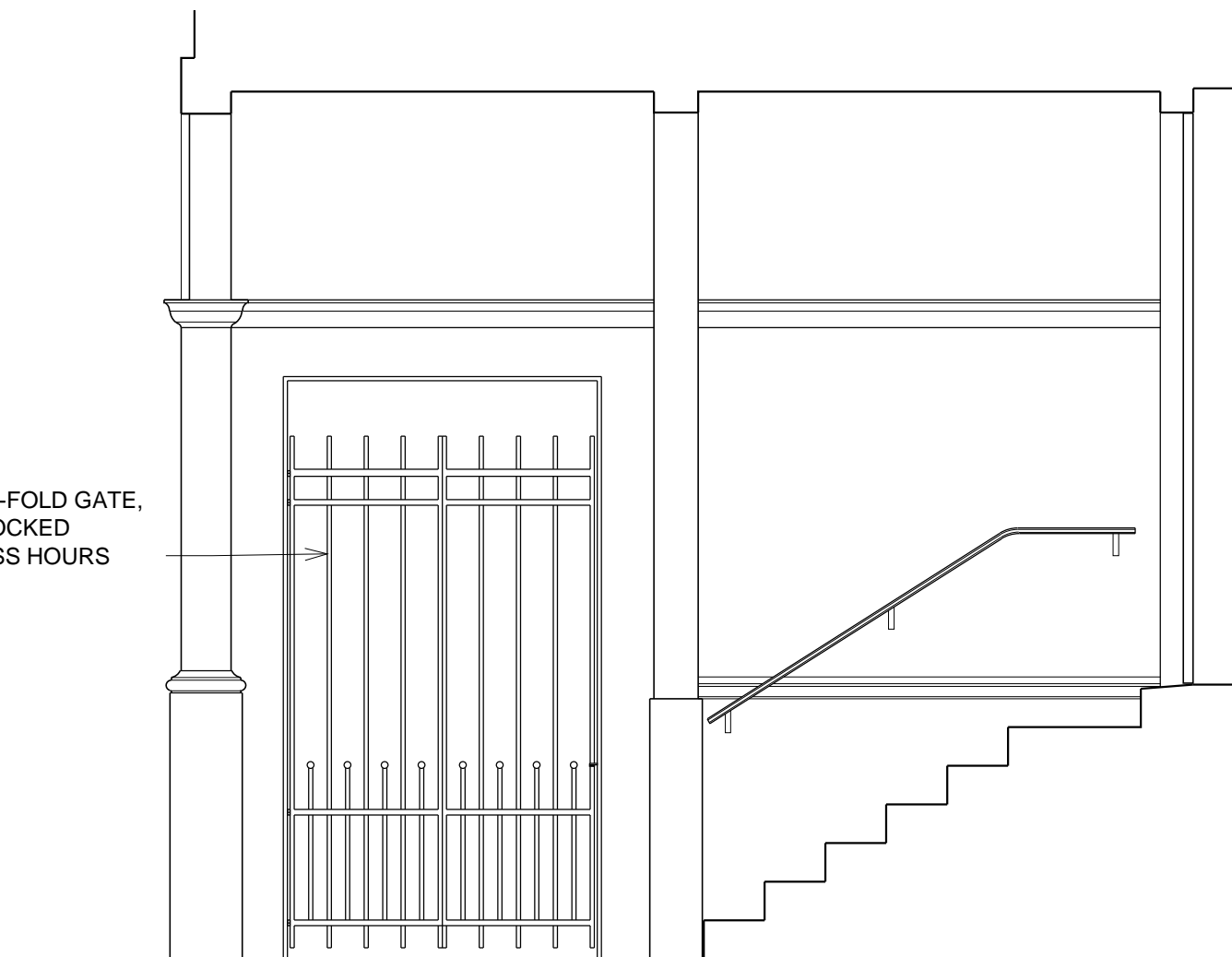
C: 300 BERKELEY VESTIBULE GATE



D: 300/302 BERKELEY FACADE MATCHING GATES



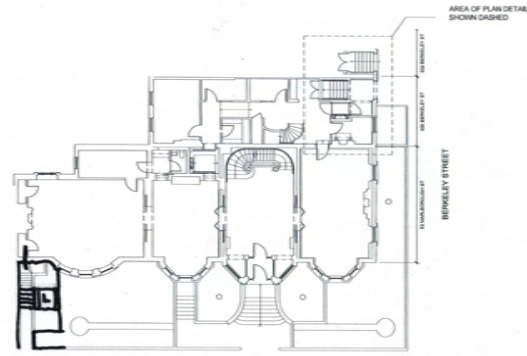
2 BERKELEY FACADE
1/8" = 1'-0"



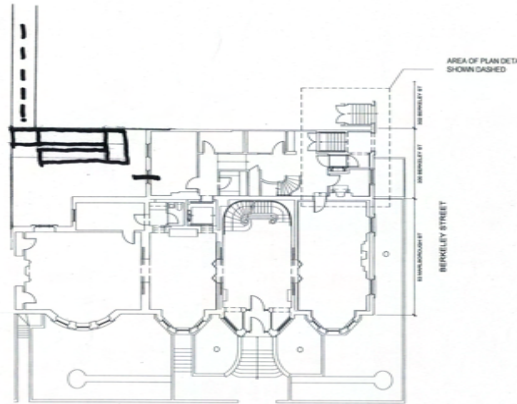
PAINTED IRON BI-FOLD GATE,
TO REMAIN UNLOCKED
DURING BUSINESS HOURS

1 BERKELEY ENTRY FACING SOUTH
3/8" = 1'-0"

**ACCEPTABLE TO LANDMARKS
COMMISSION STAFF**

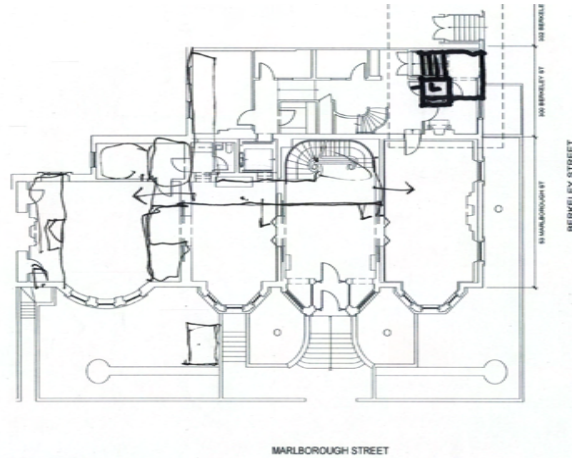


EXTERIOR LIFT TO BASEMENT KITCHEN



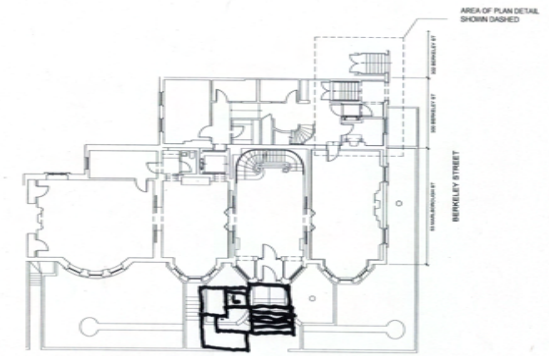
RAMP THROUGH ALLEY TO BASEMENT

**ACCEPTABLE TO BOTH
ARCHITECTURAL ACCESS BOARD
AND
LANDMARKS COMMISSION STAFF**

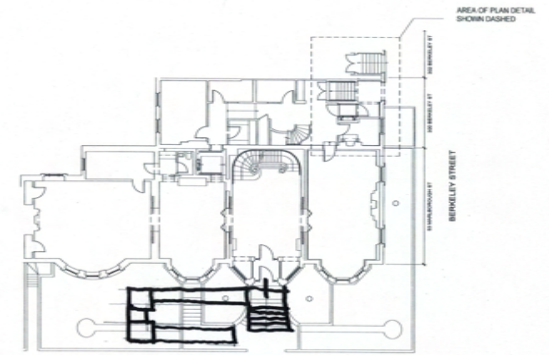


CONCEALED LIFT AT BERKELEY ENTRANCE

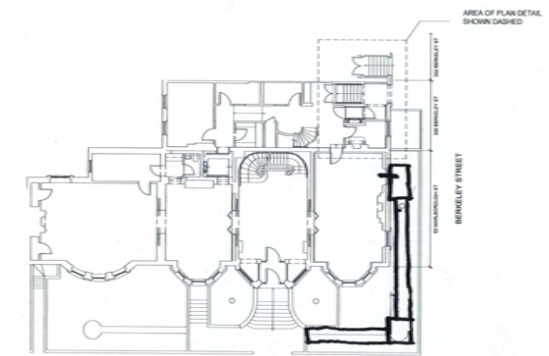
**ACCEPTABLE TO
ARCHITECTURAL ACCESS BOARD**



*EXTERIOR LIFT TO MARLBOROUGH
ENTRANCE, REBUILD HISTORIC STAIRCASE*



*RAMP IN MARLBOROUGH GARDEN, REBUILD
HISTORIC STAIRCASE*



*RAMP IN BERKELEY GARDEN, DOOR TO
GALLERY IN EXST WINDOW OPENING*