



State House 32 Derne at Rear (1886-1967)



Derne St. Towards Hancock St. (1950s-1960s)

**Historic Condition**

32/28 Derne St, Unit 5A Roof Access  
May 18, 2017 - BHAC Submission



View from Hancock Street.  
(March 2017)



View from Derne Street.  
(March 2017)



View from Park  
(March 2017)

**Existing Conditions**

32/28 Derne St, Unit 5A Roof Access  
May 18, 2017 - BHAC Submission



West Facade  
(April 2017)



South Facade  
(April 2017)

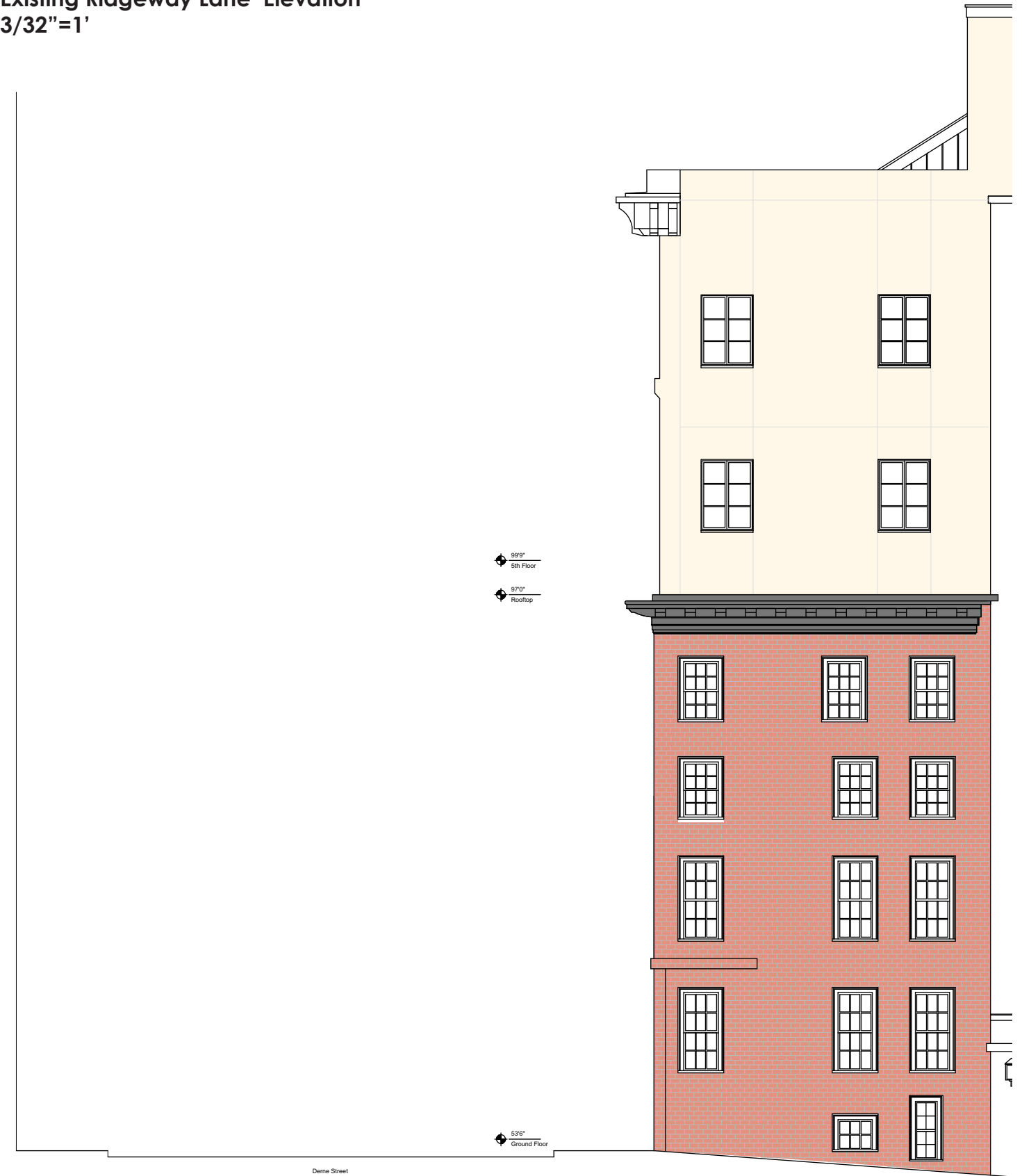
**Existing Conditions**

32/28 Derne St, Unit 5A Roof Access  
May 18, 2017 - BHAC Submission

Existing Derne St Elevation  
3/32"=1'



Existing Ridgeway Lane Elevation  
3/32"=1'



**Existing Conditions**

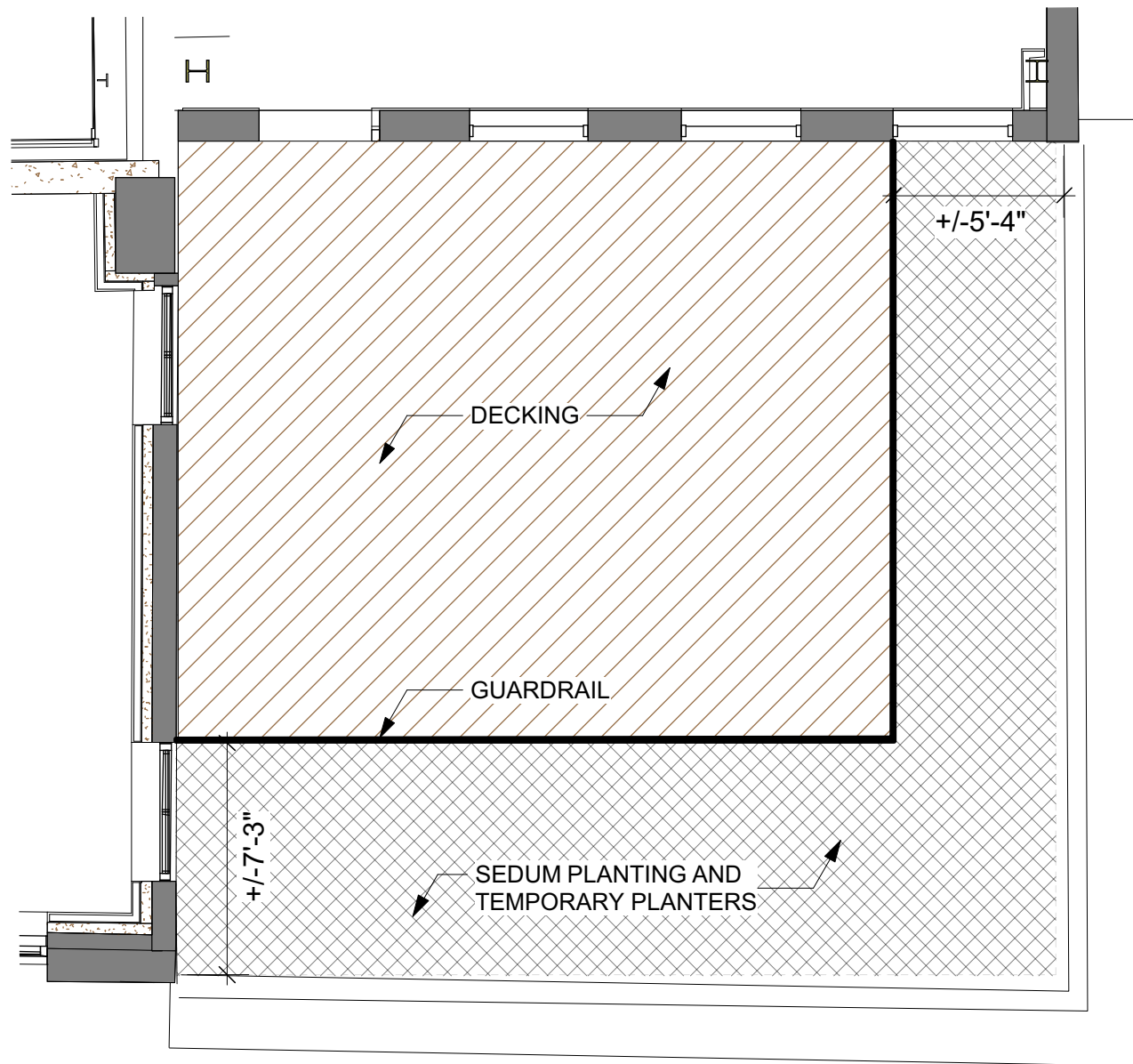
32/28 Derne St, Unit 5A Roof Access  
May 18, 2017 - BHAC Submission

Rendering from March 2015  
Approved Submission

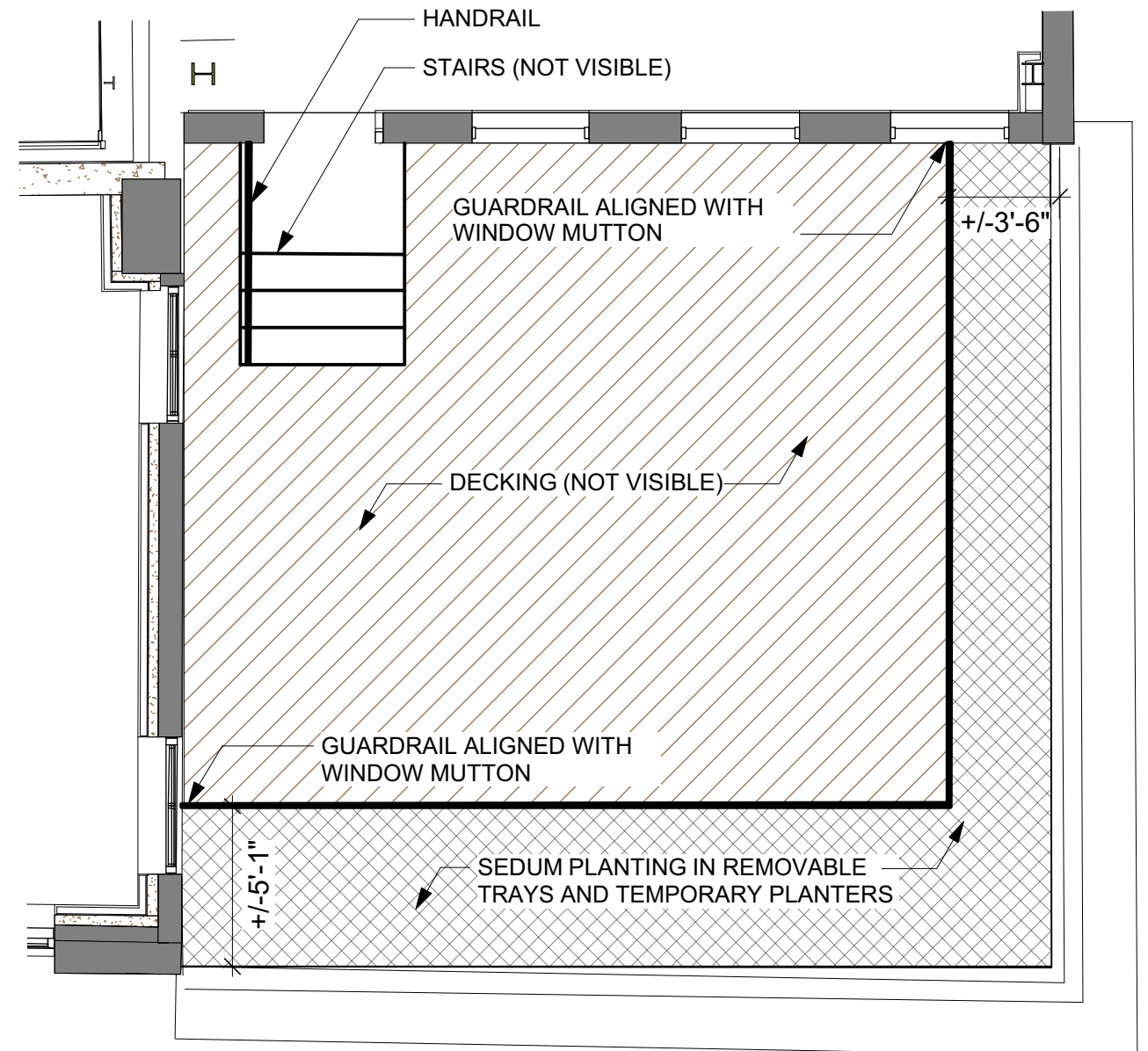


**Previously Approved Scheme**  
32/28 Derne St, Unit 5A Roof Access  
May 18, 2017 - BHAC Submission

Previously Approved Plan  
Based on Rendered View  
3/16"=8'



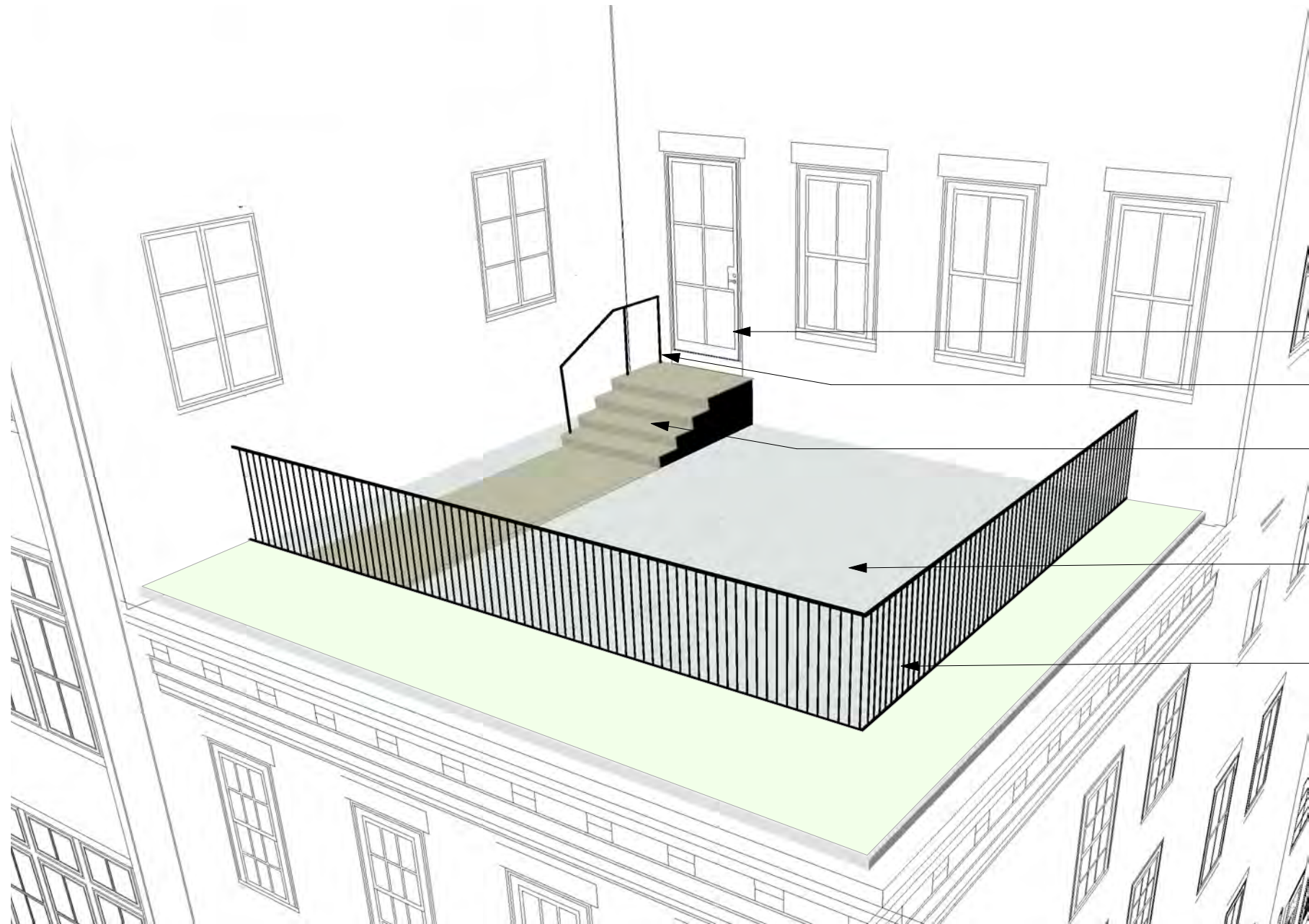
Proposed Plan  
3/16"=8'



**Plan Comparison**

32/28 Derne St, Unit 5A Roof Access  
May 18, 2017 - BHAC Submission

**Model View of Permanent Structures**  
NTS



**DOOR**  
HOPE'S JAMESTOWN 175  
STEEL AND GLASS

**HANDRAIL:**  
BLACKENED METAL

**STAIR:**  
IPE DECK ON RISERS AND TREADS  
BLACKENED METAL STAIR SIDE  
(NOT VISIBLE)

**DECK:**  
IPE AND HANOVER PAVER  
(NOT VISIBLE)

**GUARDRAIL:**  
BLACKENED METAL GUARDRAIL

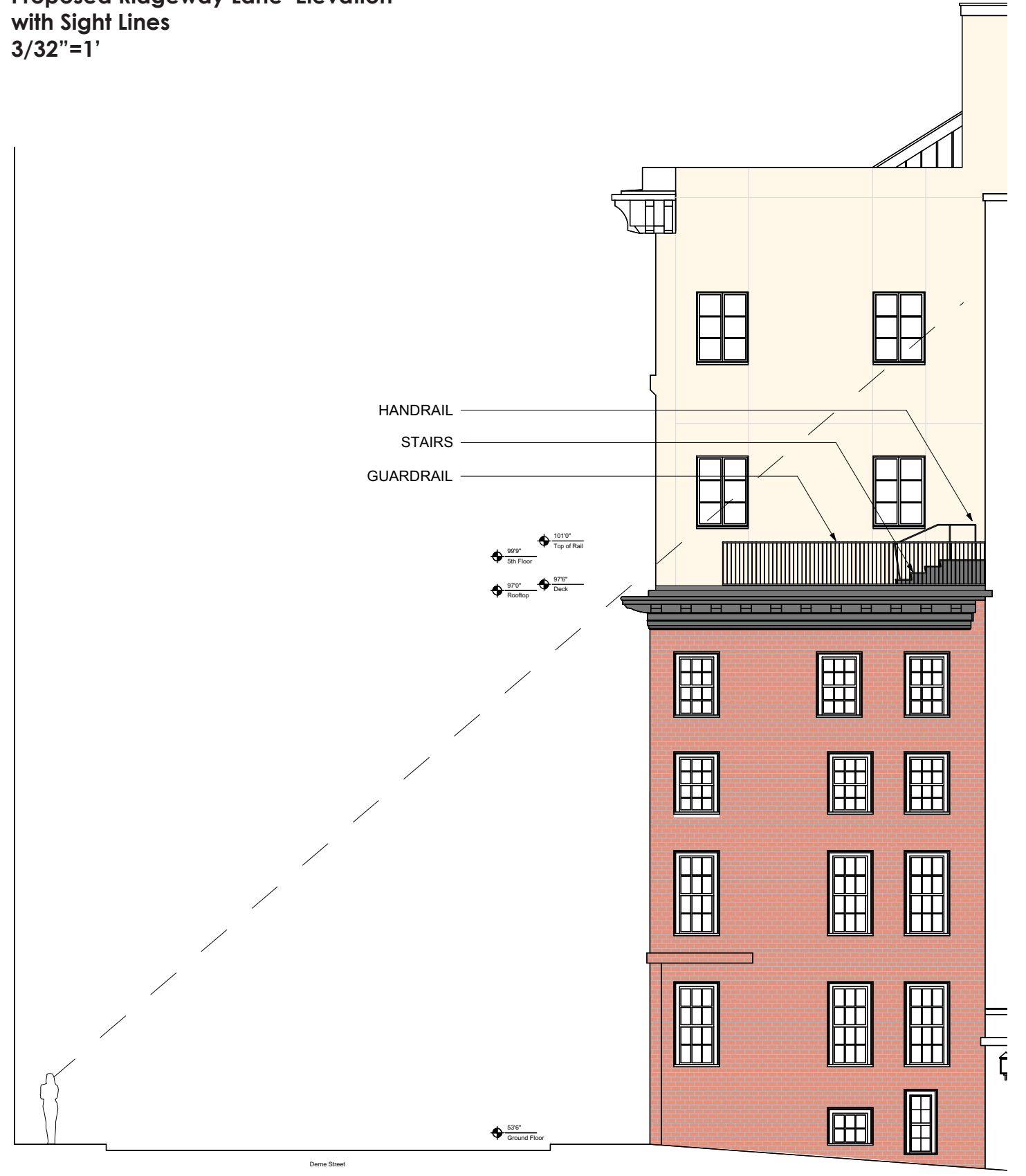
**Proposed Conditions**

32/28 Derne St, Unit 5A Roof Access  
May 18, 2017 - BHAC Submission

**Proposed Derne St Elevation  
with Sight Lines**  
3/32"=1'

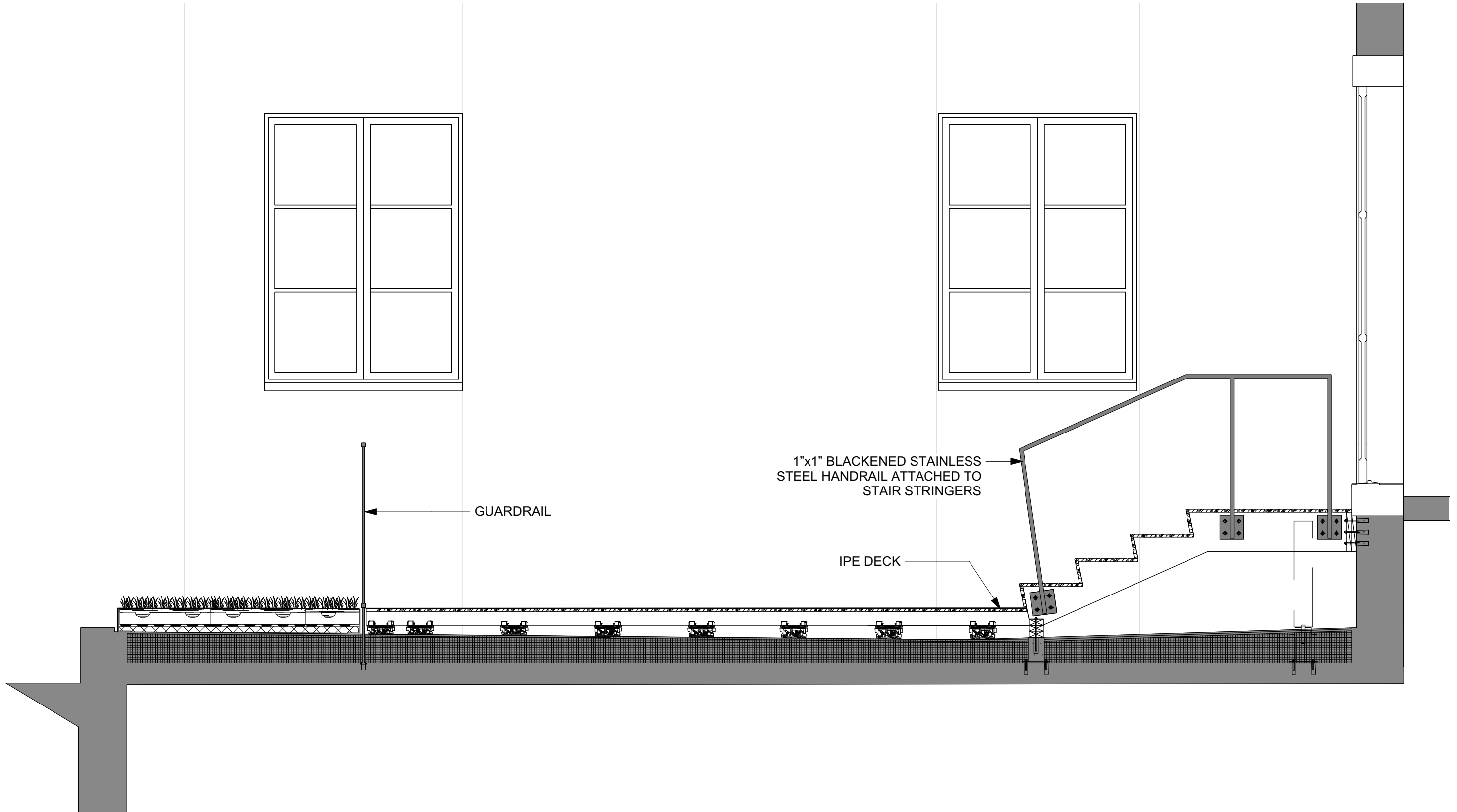


**Proposed Ridgeway Lane Elevation  
with Sight Lines**  
3/32"=1'





Handrail, Stair and Edge Details  
1/2"=1'

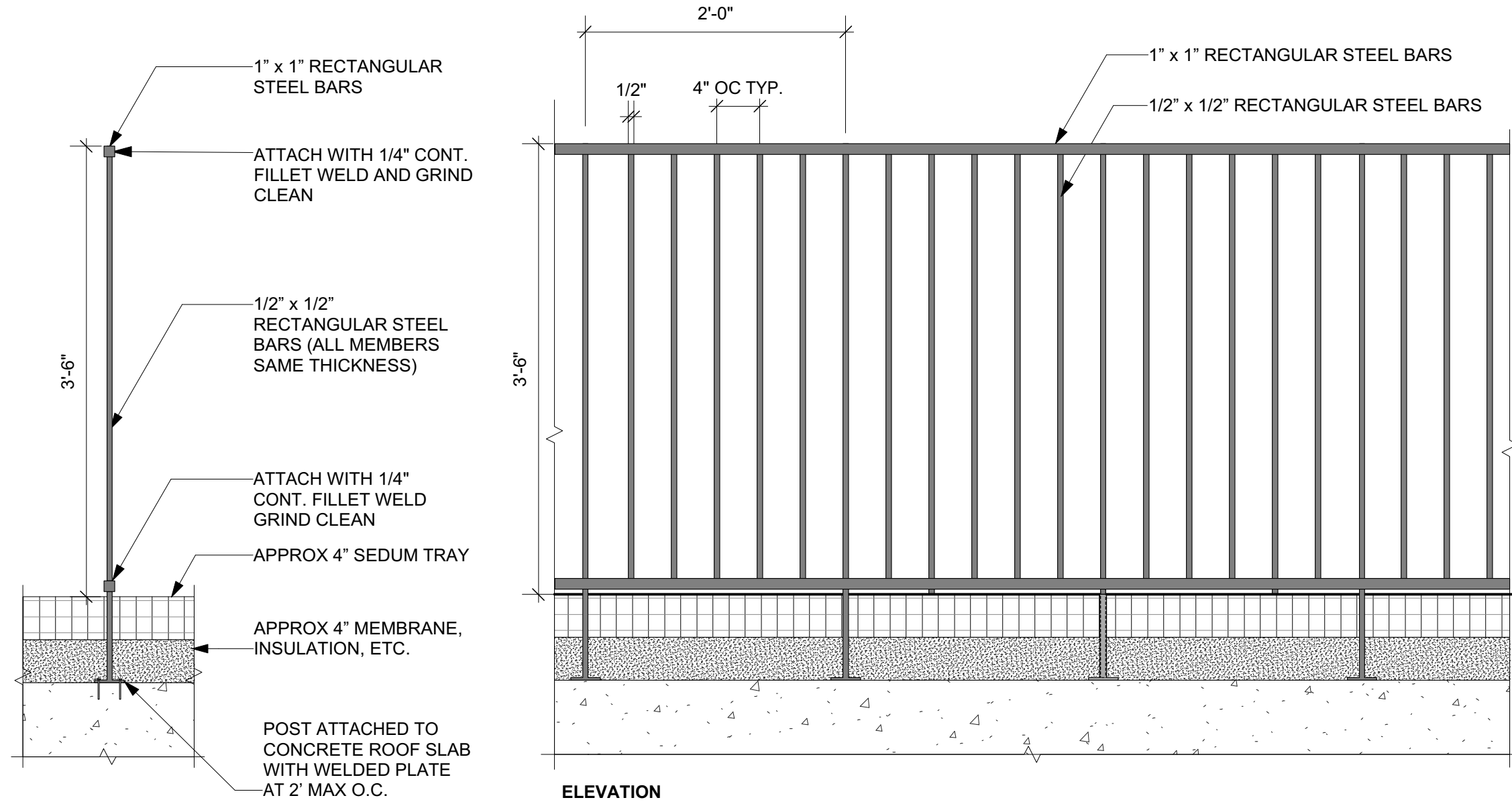


**Proposed Details**

32/28 Derne St, Unit 5A Roof Access  
May 18, 2017 - BHAC Submission

**Proposed Guardrail Detail**

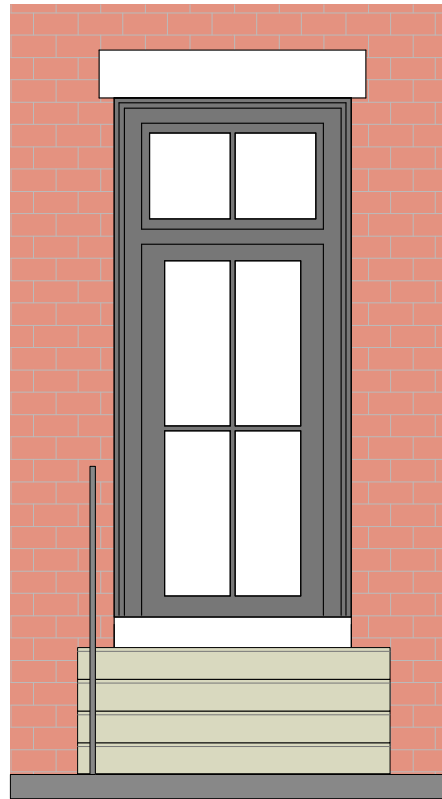
1"=1'



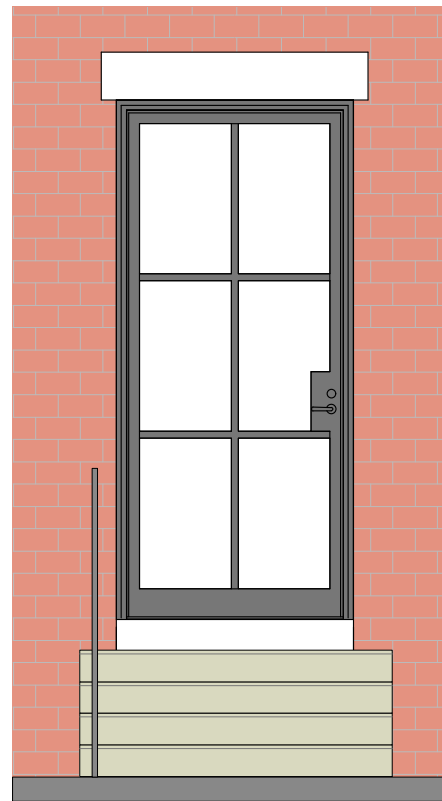
**Material Sample**



Existing Door



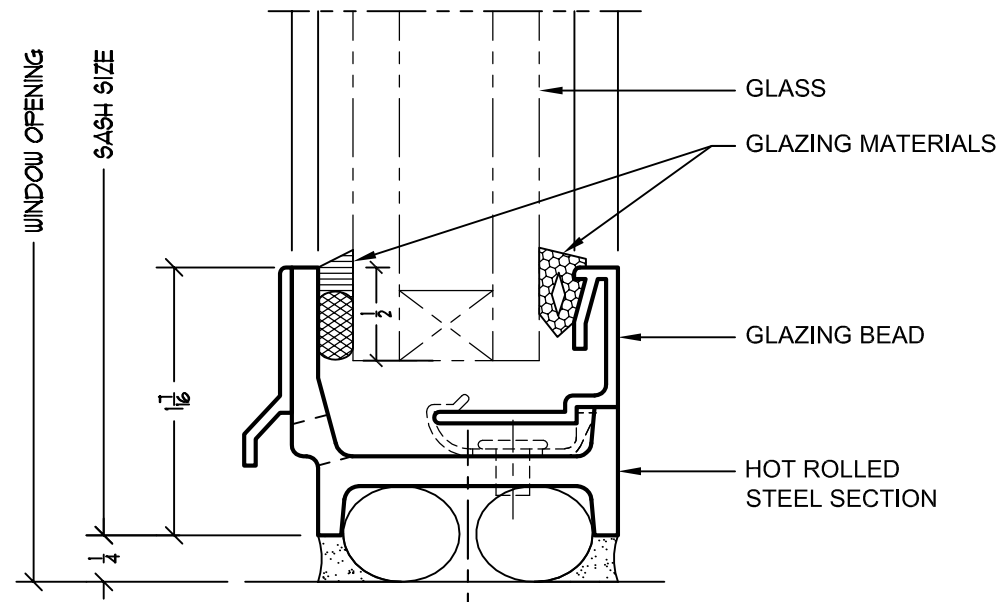
Proposed Door



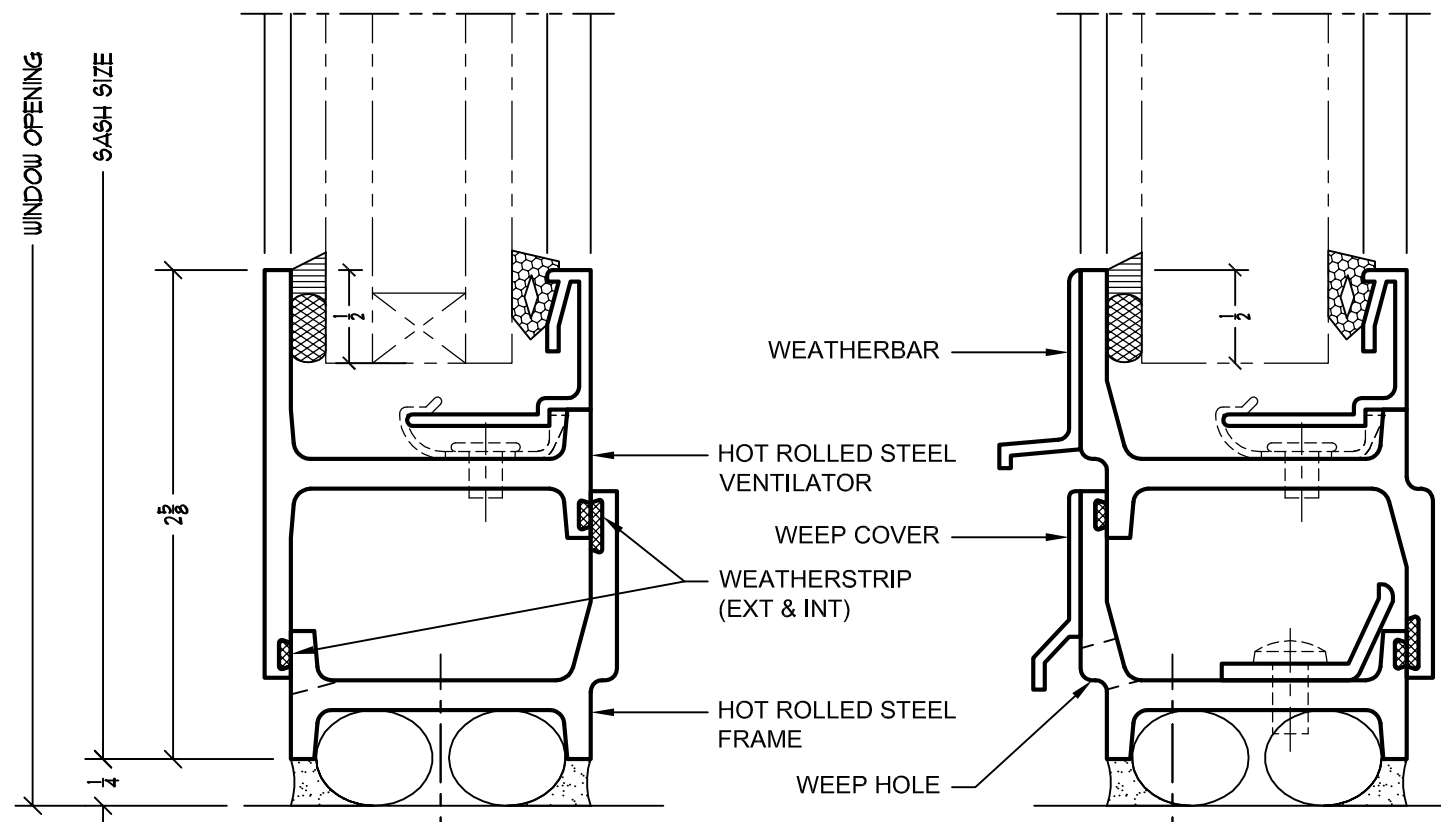
**HOPE'S®**  
Jamestown 175™ Series

TYPICAL FULL SIZE DETAILS

SEE THE "DOWNLOAD" LINK  
TO ACCESS CAD FILES FOR  
COMPLETE SELECTION OF DETAILS



**FIXED DETAIL**  
INTERIOR GLAZED WITH 1" GLASS

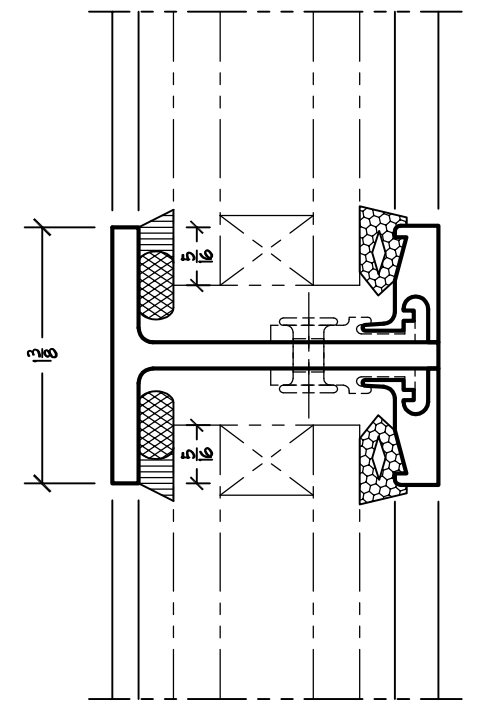


**SWING-OUT DETAIL**  
INTERIOR GLAZED WITH 1" GLASS

Details are full scale.

**SWING-IN DETAIL**  
INTERIOR GLAZED WITH 1" GLASS

**#175M TRUE MUNTIN DETAIL**  
INTERIOR GLAZED WITH 1" GLASS



**#138L TRUE MUNTIN DETAIL**  
INTERIOR GLAZED WITH 1" GLASS

**Proposed Details**

32/28 Derne St, Unit 5A Roof Access  
May 18, 2017 - BHAC Submission

**Mock Up from Roof**

**Mock Up Guard Rail Top: 1.5"x 5.5"**  
**Proposed Guard Rail Top: 1"x1"**

**Mock Up Guardrail Mesh: 1.5"x1.75" Gaps**  
**Mock Up Guard Rail Vertical: 1.5"x 3.5"**  
**Proposed Guard Rail**  
**Verticals: 1/2"x 1/2", 4" O.C.**

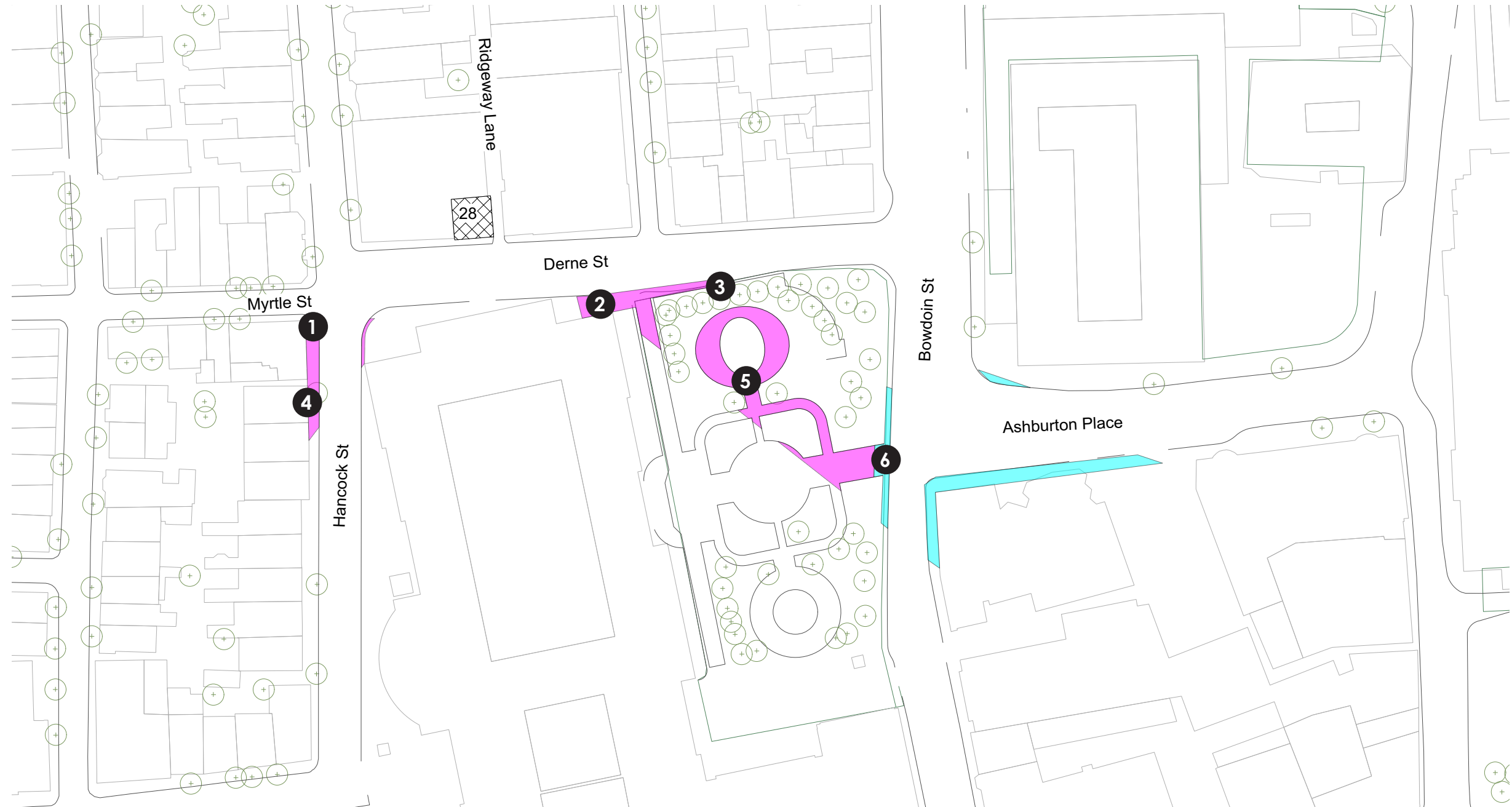
**Mock Up Hand Rail: 1.5"x3.5"**  
**Proposed Hand Rail: 1"x1"**





**Mock Up**

32/28 Derne St, Unit 5A Roof Access  
May 18, 2017 - BHAC Submission

**Block Plan with Mock Up Visibility**  
**NTS**



-  Partially Visible Railing
-  Partially Visible Railing, Winter Only

Low Visibility Points

1 From Hancock Street at Myrtle Street



2 From Derne St at Statehouse Door



3 From Derne St at Garage Entry



Mock Up

32/28 Derne St, Unit 5A Roof Access  
May 18, 2017 - BHAC Submission

Low Visibility Points

1 From Hancock Street at Myrtle Street



2 From Derne St at Statehouse Door



3 From Derne St at Garage Entry



Mock Up

32/28 Derne St, Unit 5A Roof Access  
May 18, 2017 - BHAC Submission

High Visibility Points

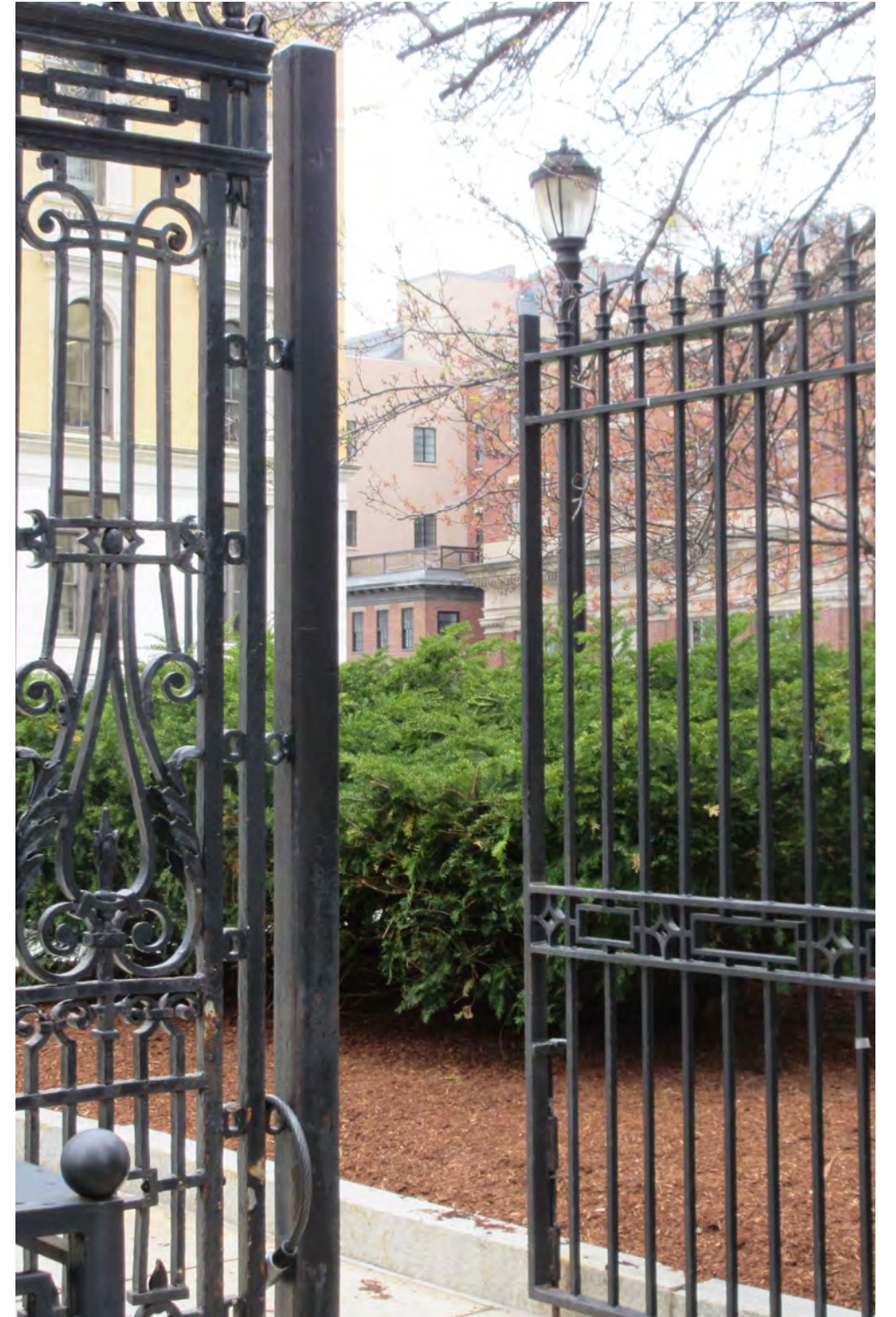
4 From Hancock Street



5 From Inside Park



6 From Bowdoin St at Park Gate



Mock Up

32/28 Derne St, Unit 5A Roof Access  
May 18, 2017 - BHAC Submission



High Visibility Points

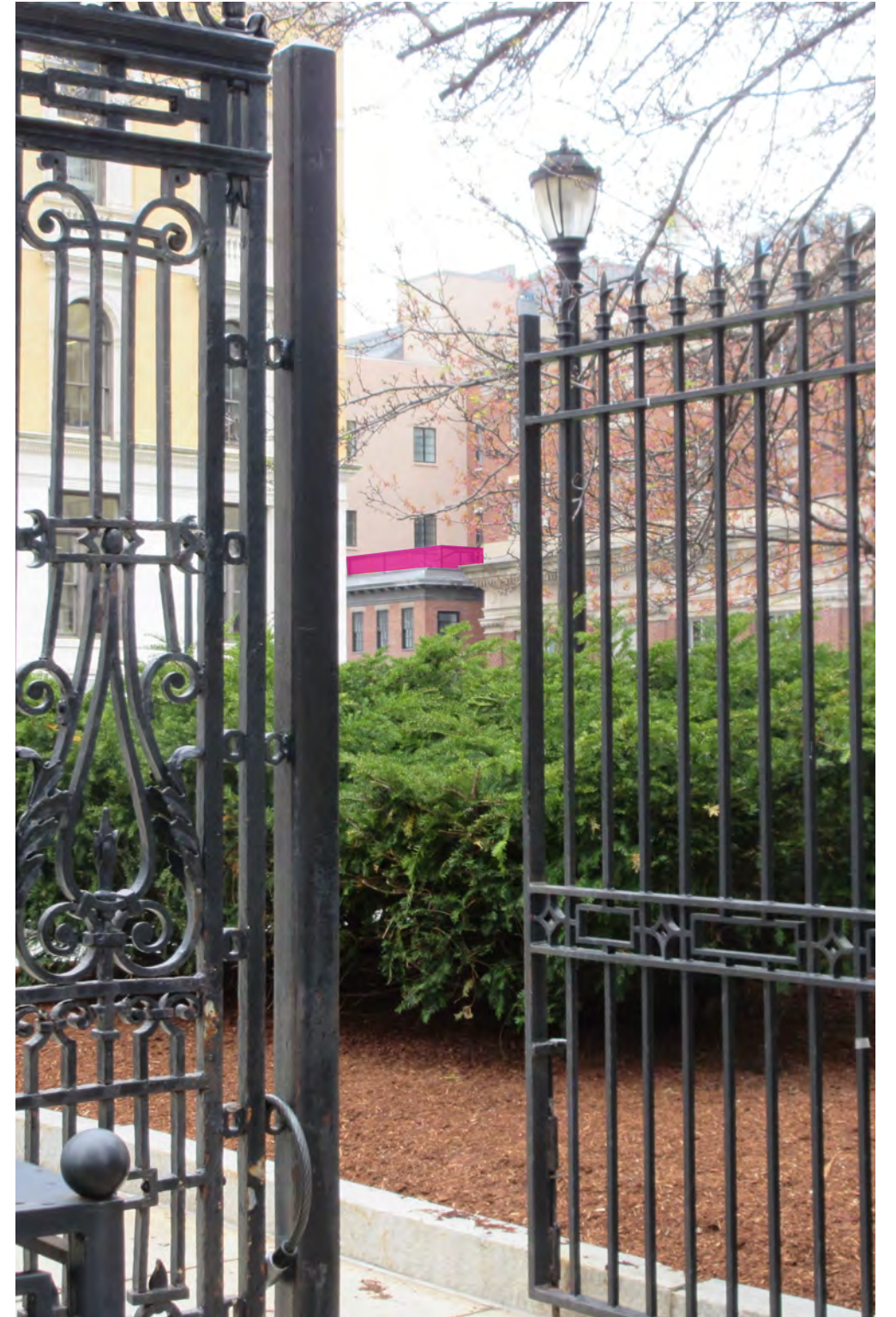
4 From Hancock Street



5 From Inside Park



6 From Bowdoin St at Park Gate



Mock Up

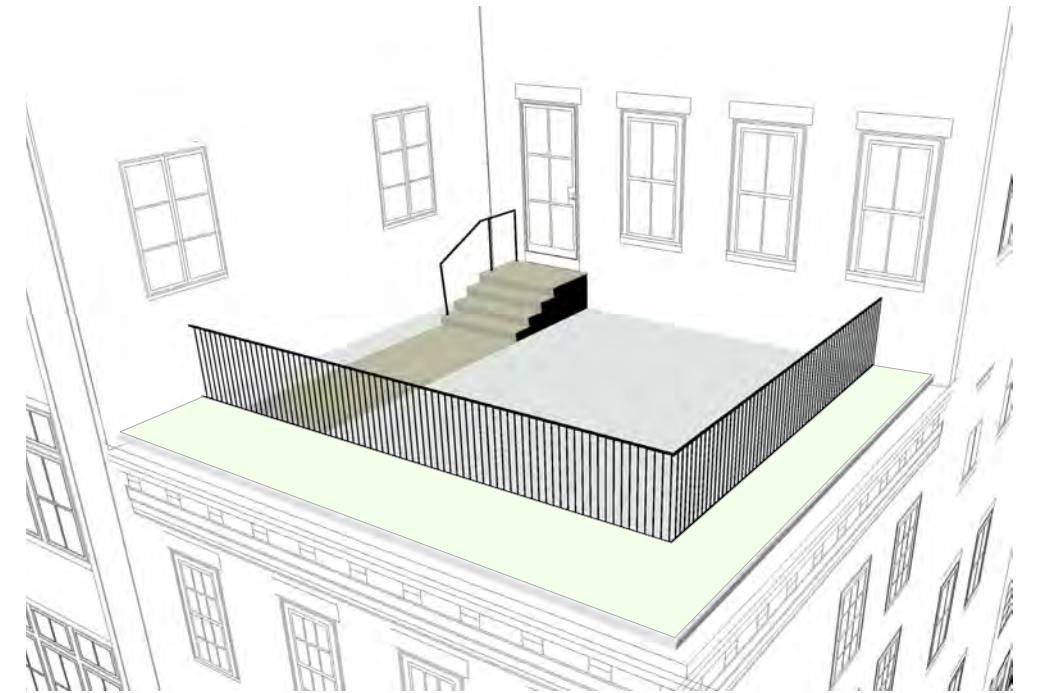
32/28 Derne St, Unit 5A Roof Access  
May 18, 2017 - BHAC Submission

Permanent Structures Only - Rendered

4 From Hancock Street



5 From Inside Park



Renderings

32/28 Derne St, Unit 5A Roof Access  
May 18, 2017 - BHAC Submission

Permanent Structures and Planters- Rendered

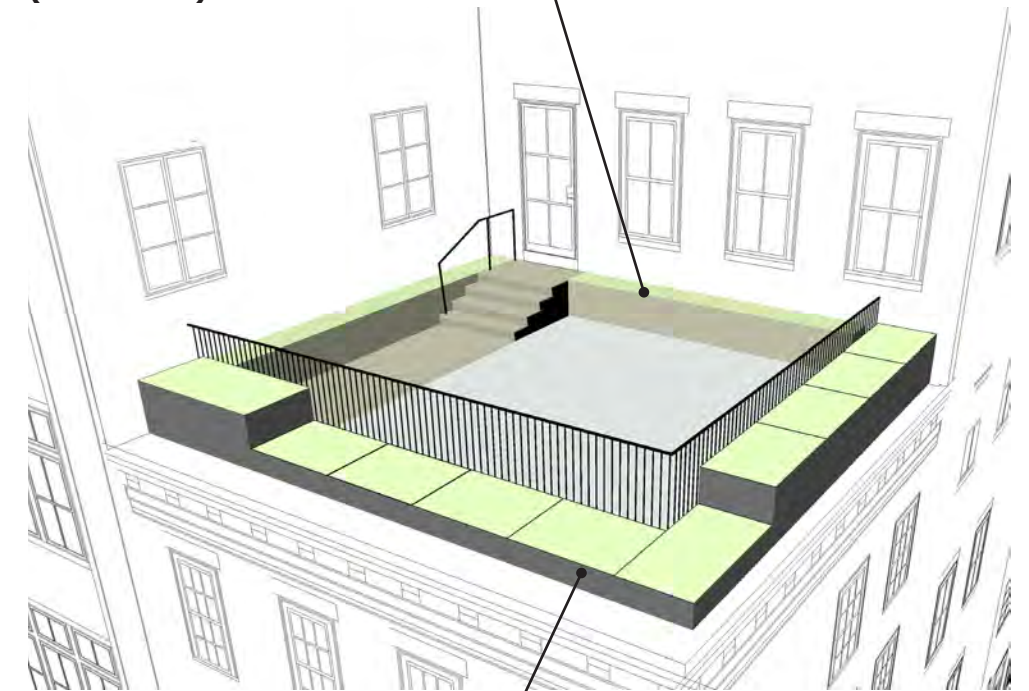
4 From Hancock Street



5 From Inside Park



Temporary ipe planters  
(not visible)



Temporary metal planters  
to match cornice

Renderings

32/28 Derne St, Unit 5A Roof Access  
May 18, 2017 - BHAC Submission