



284 COMM. AVE.

02.27.17



284 COMM. AVE.

02.27.17



286 COMM. AVE.  
PENTHOUSE

284 COMM. AVE. (LOOKING SOUTH)

02.10.17



284 COMM. AVE. (LOOKING NORTH)

02.10.17



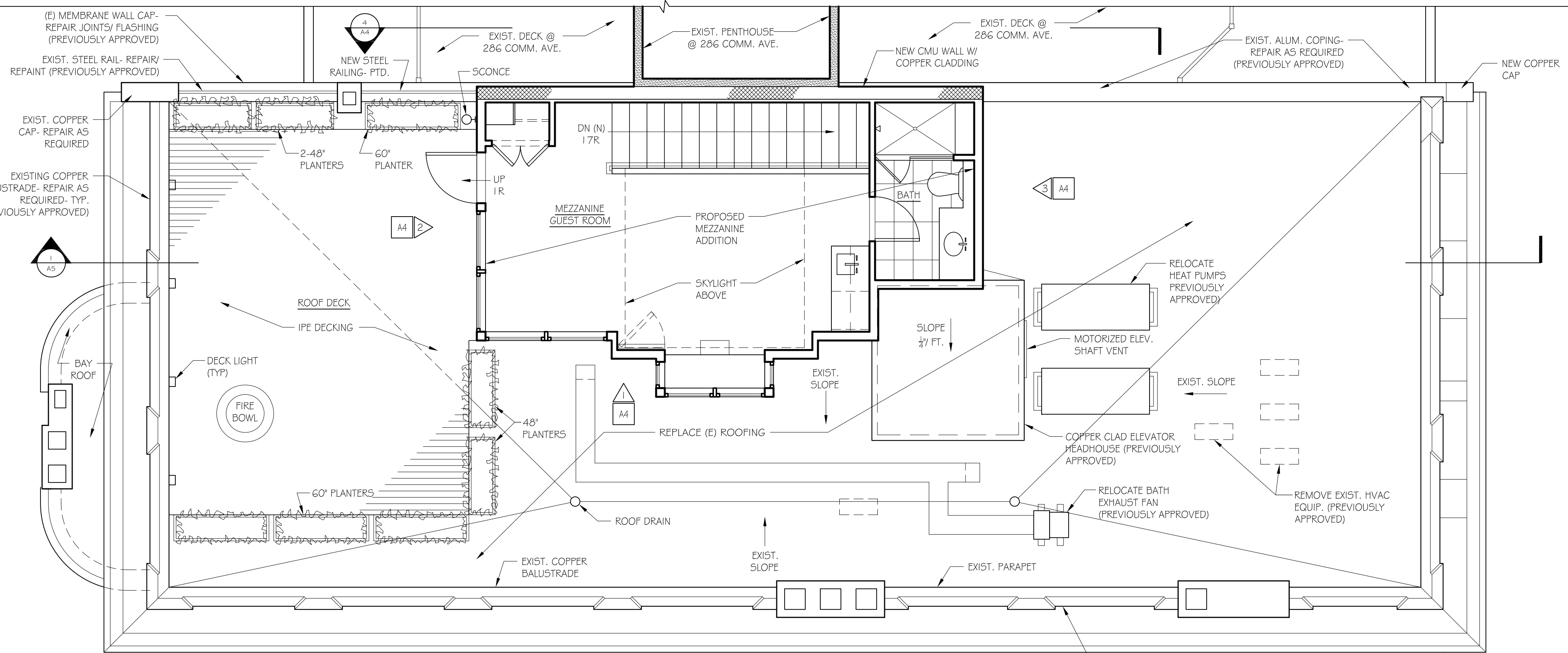
284 COMM. AVE.

02.10.17

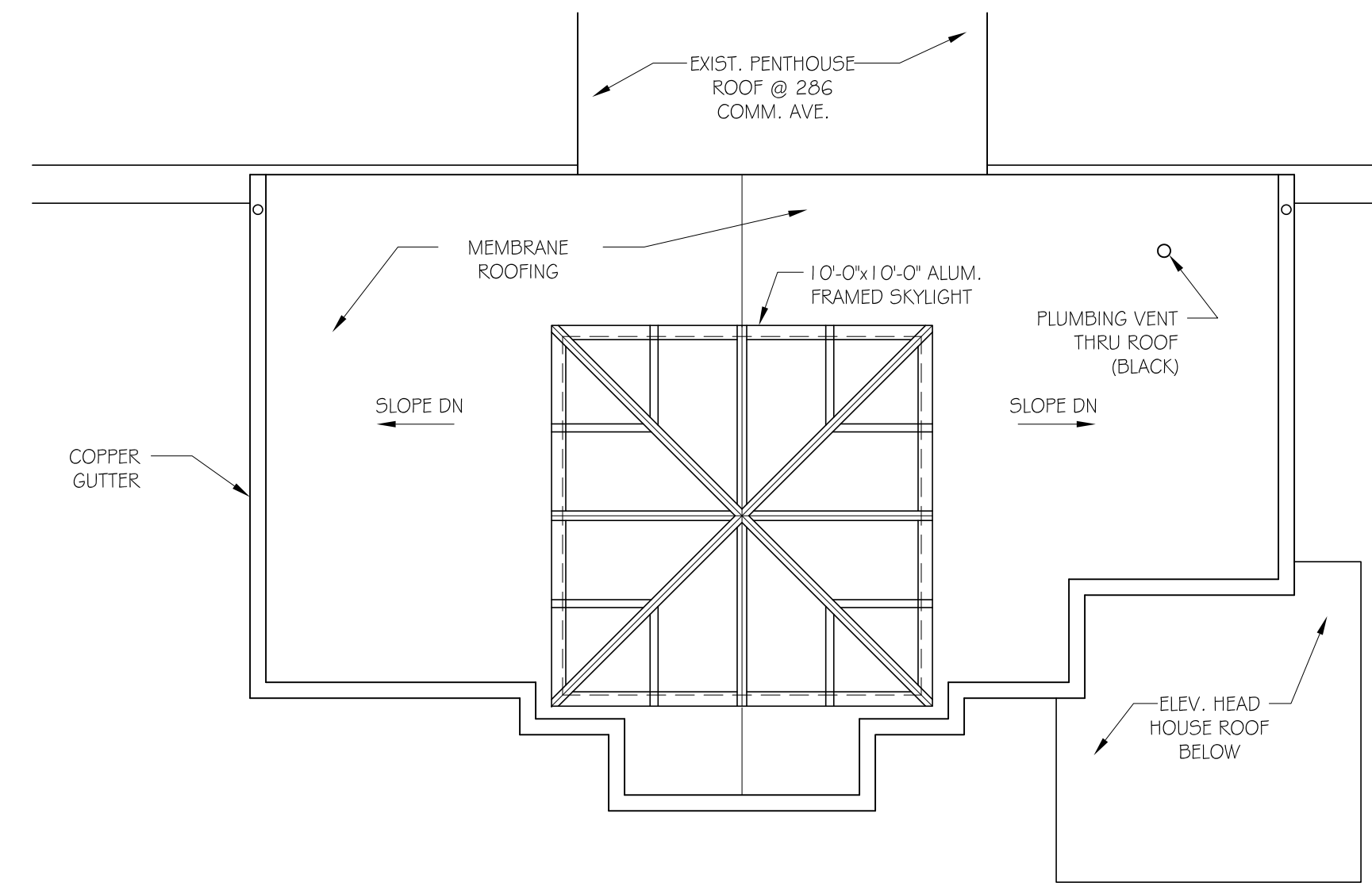


284. COMM. AVE.

02.10.17

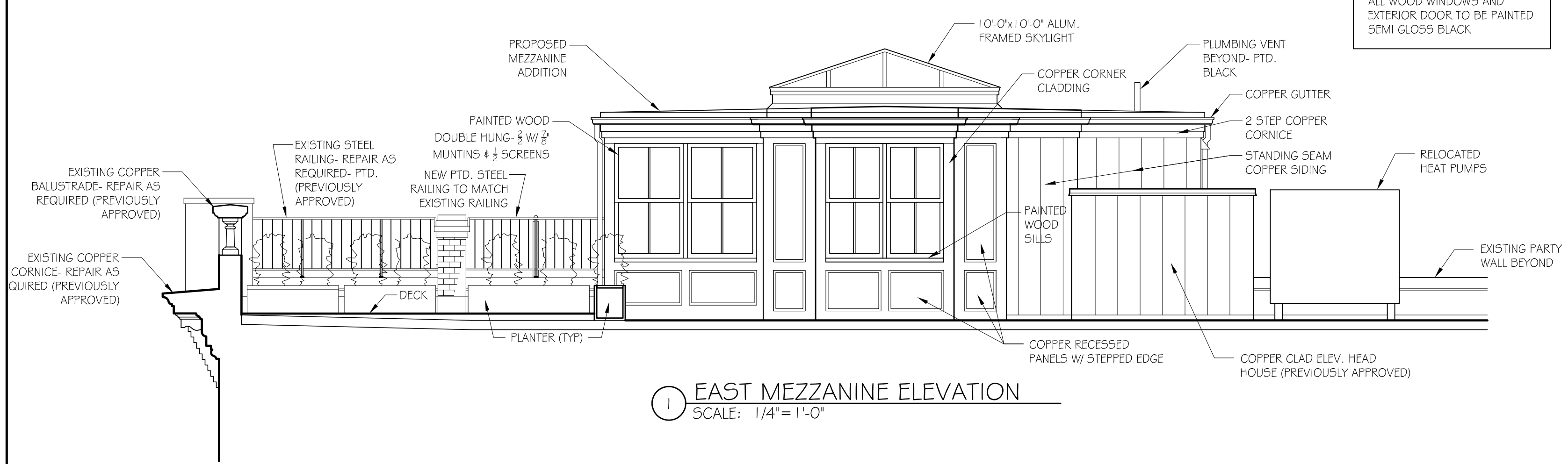


**ROOF PLAN**  
1/4" = 1'-0"

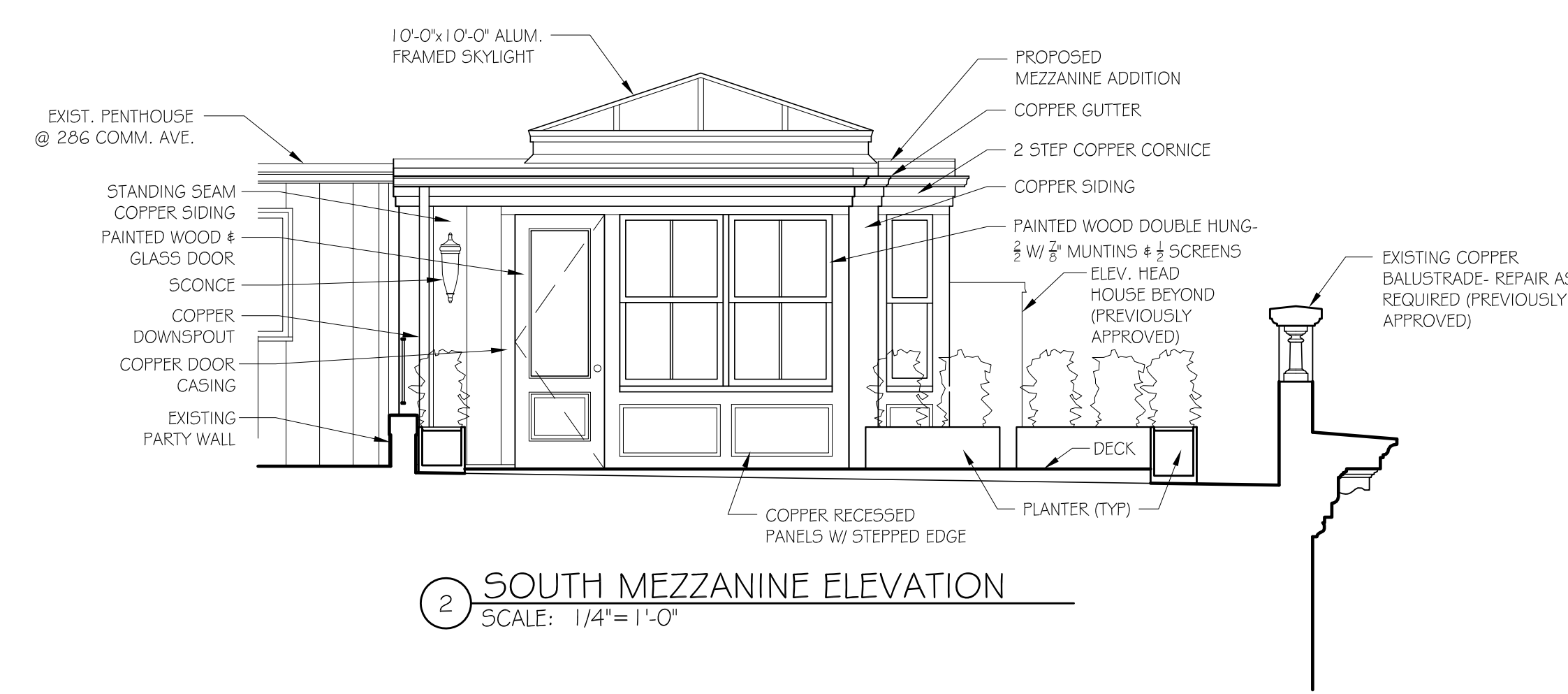


**ROOF PLAN @ MEZZANINE**  
1/4" = 1'-0"

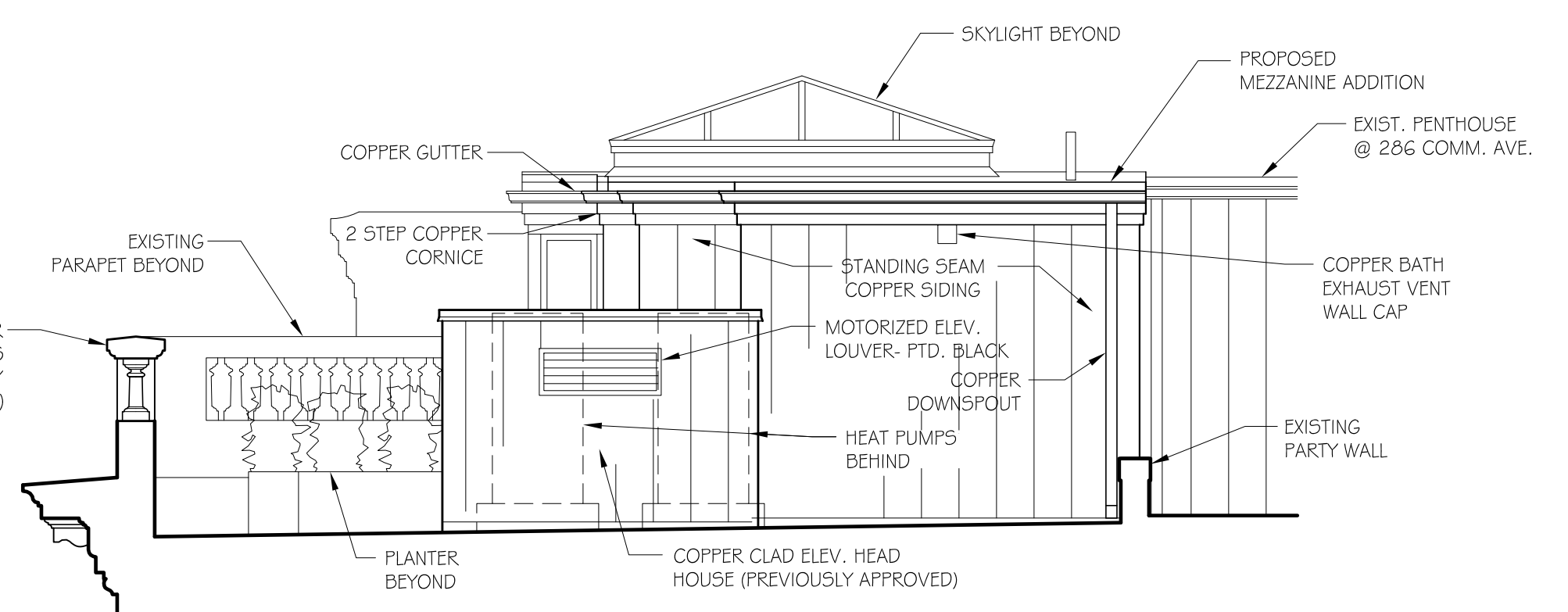
NOTE:  
ALL WOOD WINDOWS AND EXTERIOR DOOR TO BE PAINTED SEMI GLOSS BLACK



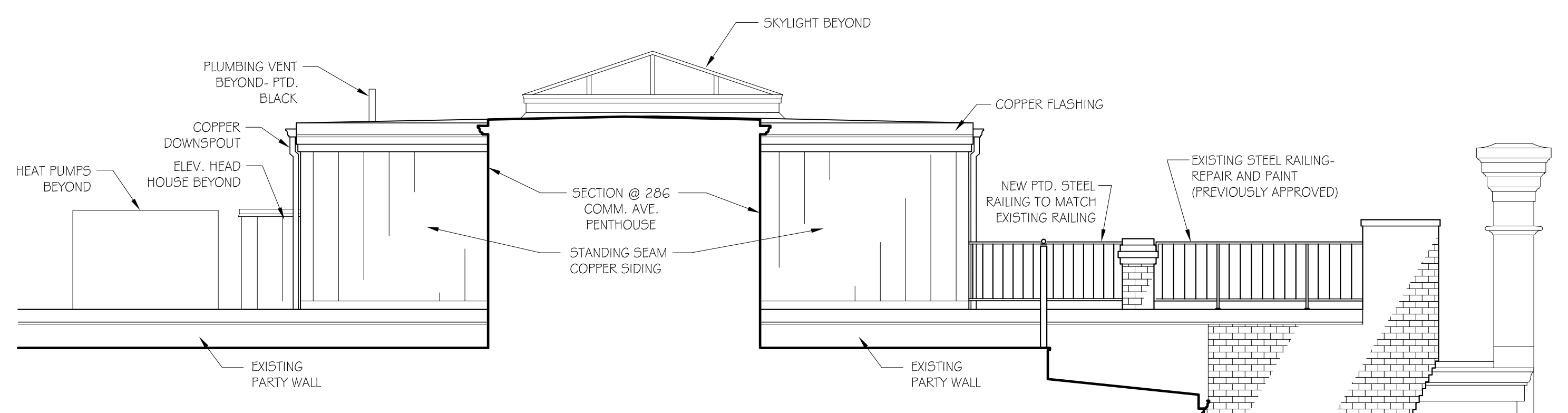
**1 EAST MEZZANINE ELEVATION**  
SCALE: 1/4" = 1'-0"



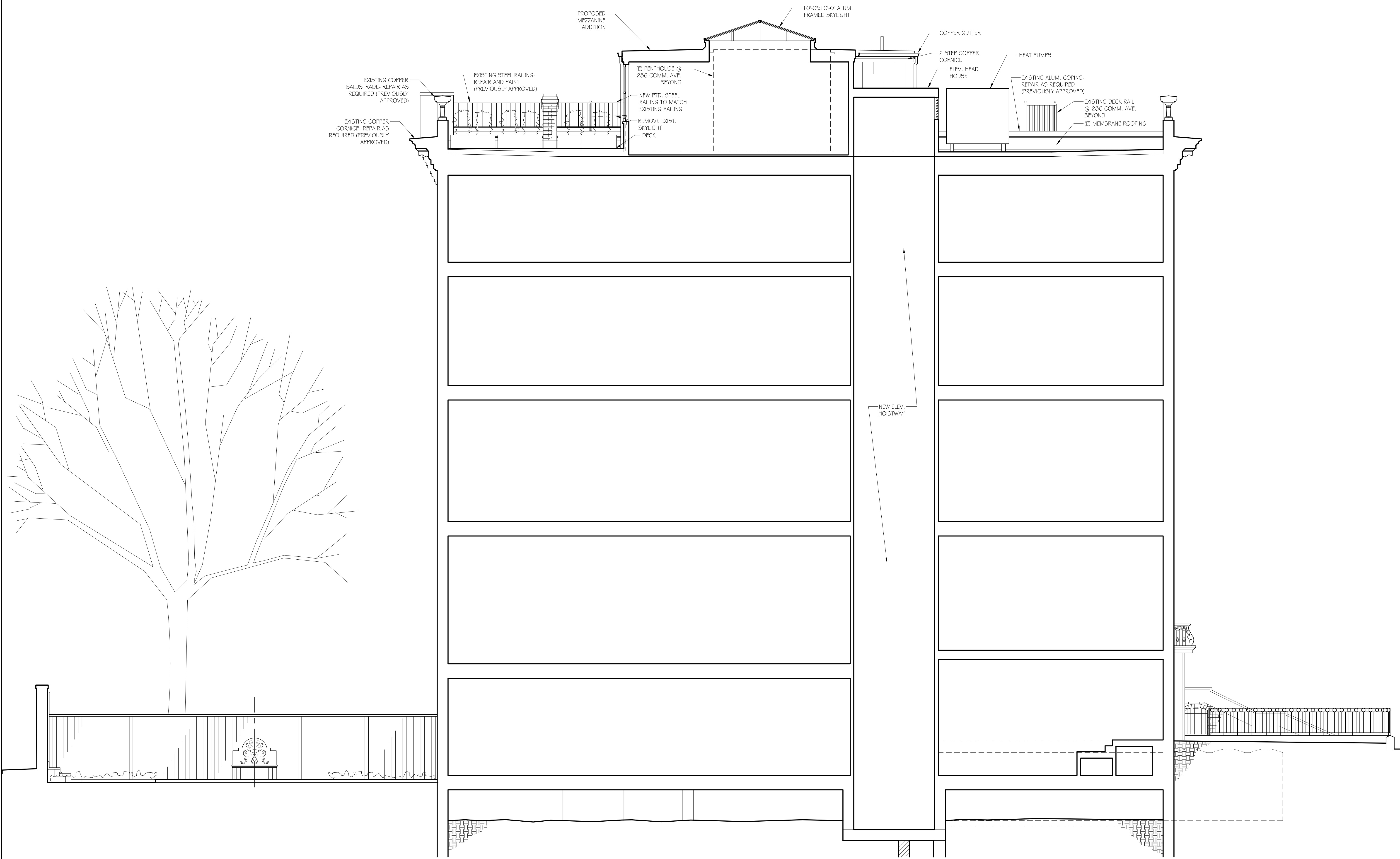
**2 SOUTH MEZZANINE ELEVATION**  
SCALE: 1/4" = 1'-0"



**3 NORTH MEZZANINE ELEVATION**  
SCALE: 1/4" = 1'-0"



**4 WEST MEZZANINE ELEVATION @ 286 COMM. ROOF**  
SCALE: 1/4" = 1'-0"



1 BUILDING SECTION  
SCALE: 1/4" = 1'-0"

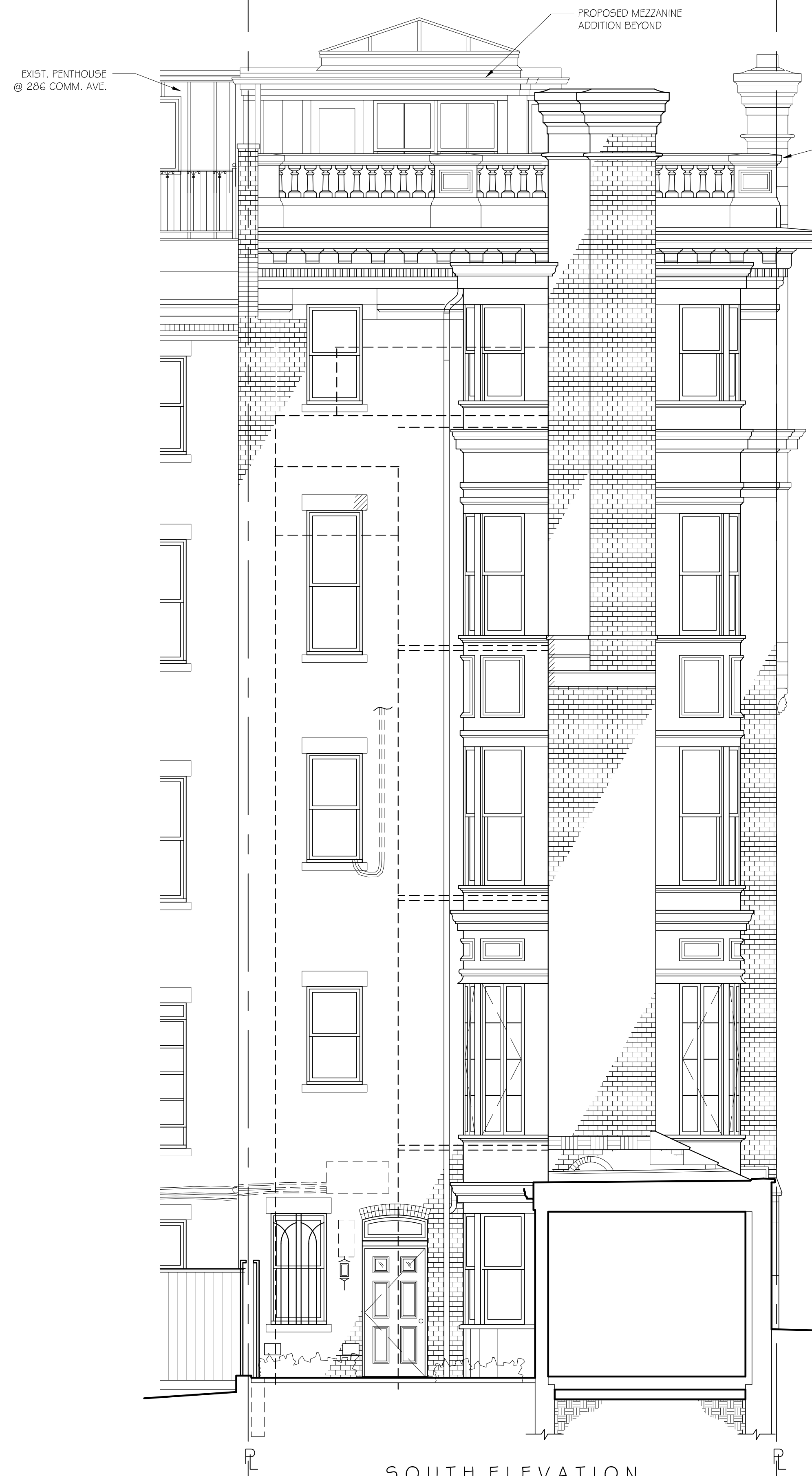
JOB NO: 1515	SCALE: 1/4" = 1'-0"	DATE: 02.02.17	REVISIONS

284 COMMONWEALTH  
BOSTON, MASSACHUSETTS

BUILDING SECTION



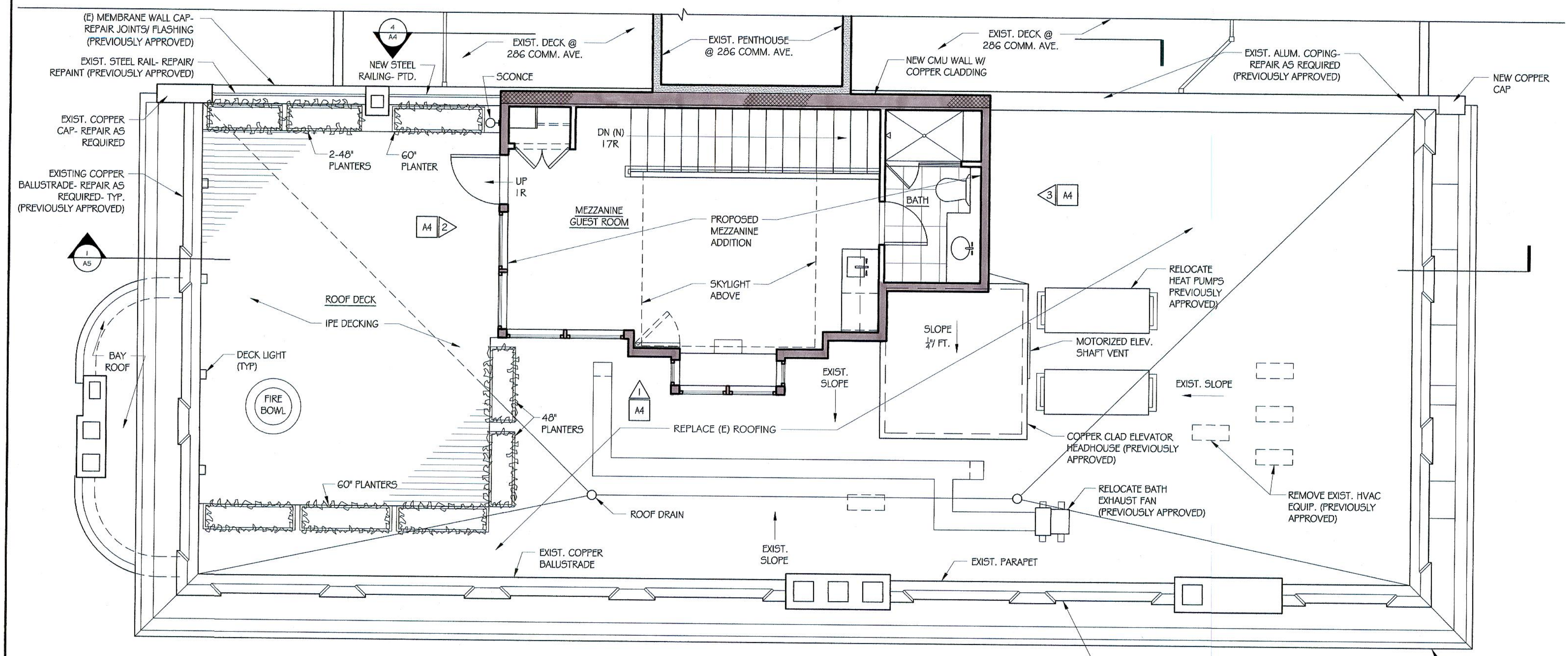
EAST ELEVATION  
 $\frac{1}{4}'' = 1'-0''$



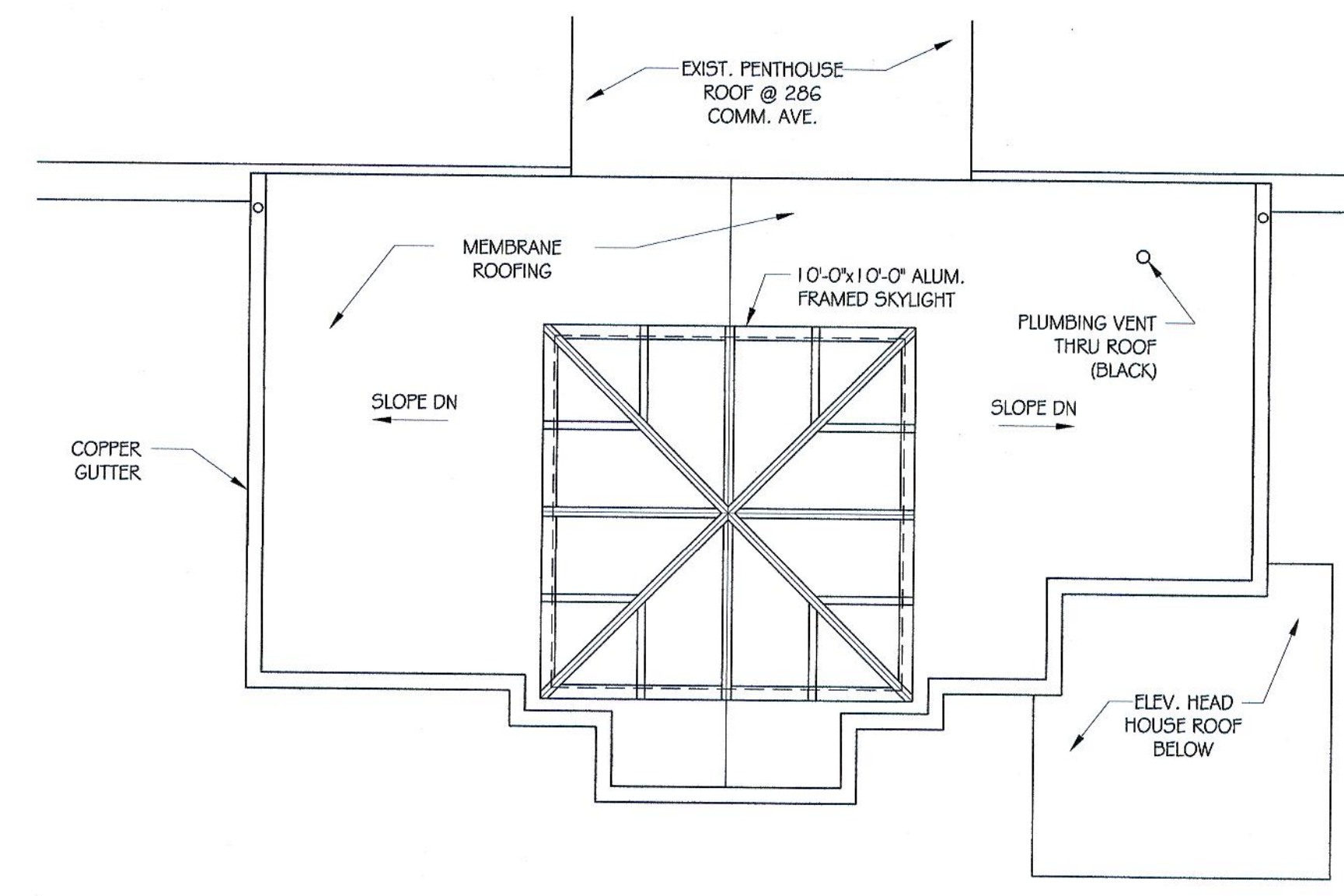
SOUTH ELEVATION  
1/4" = 1'-0"



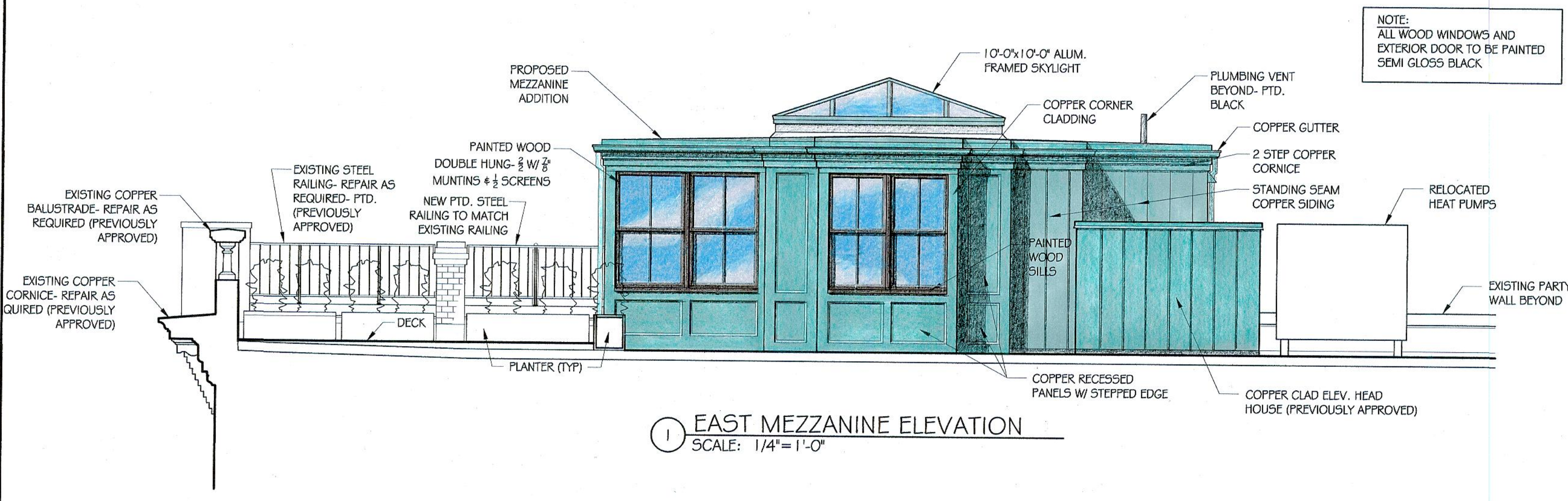
NORTH ELEVATION  
1/4" = 1'-0"



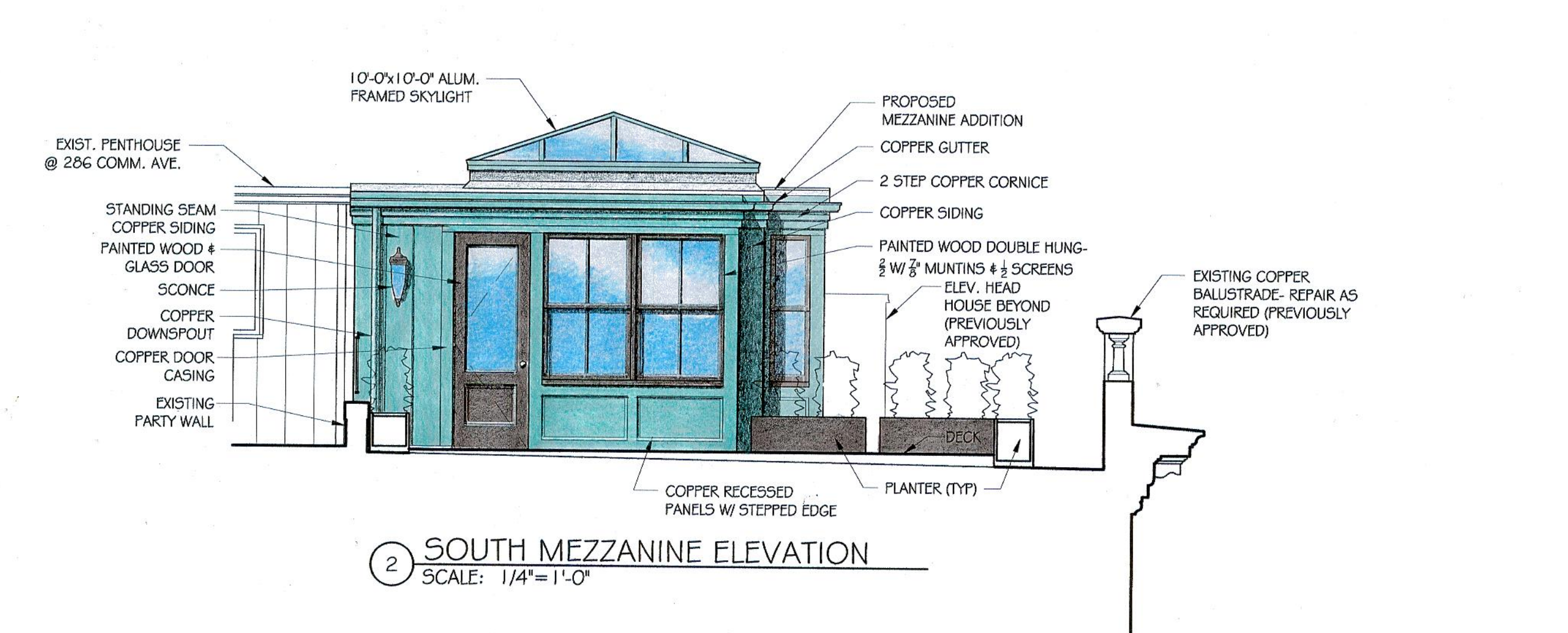
ROOF PLAN  
1/4" = 1'-0"



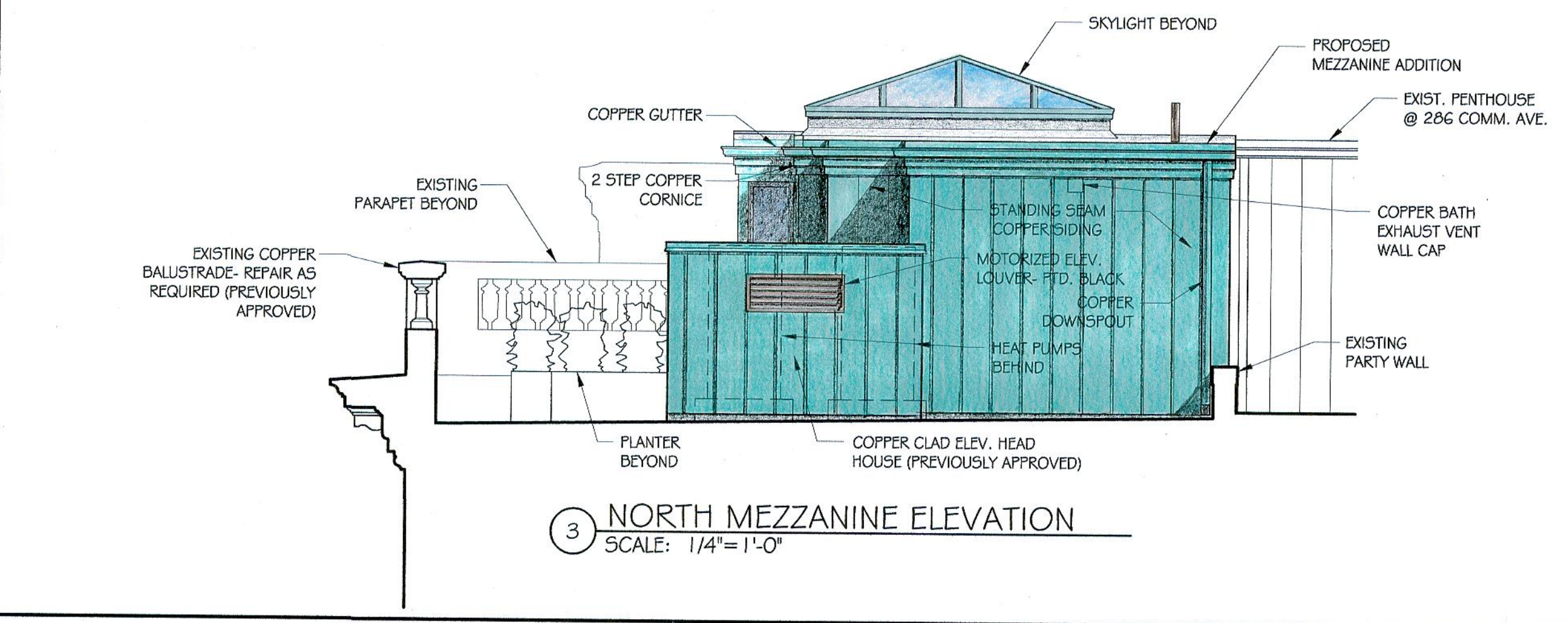
ROOF PLAN @ MEZZANINE  
1/4" = 1'-0"



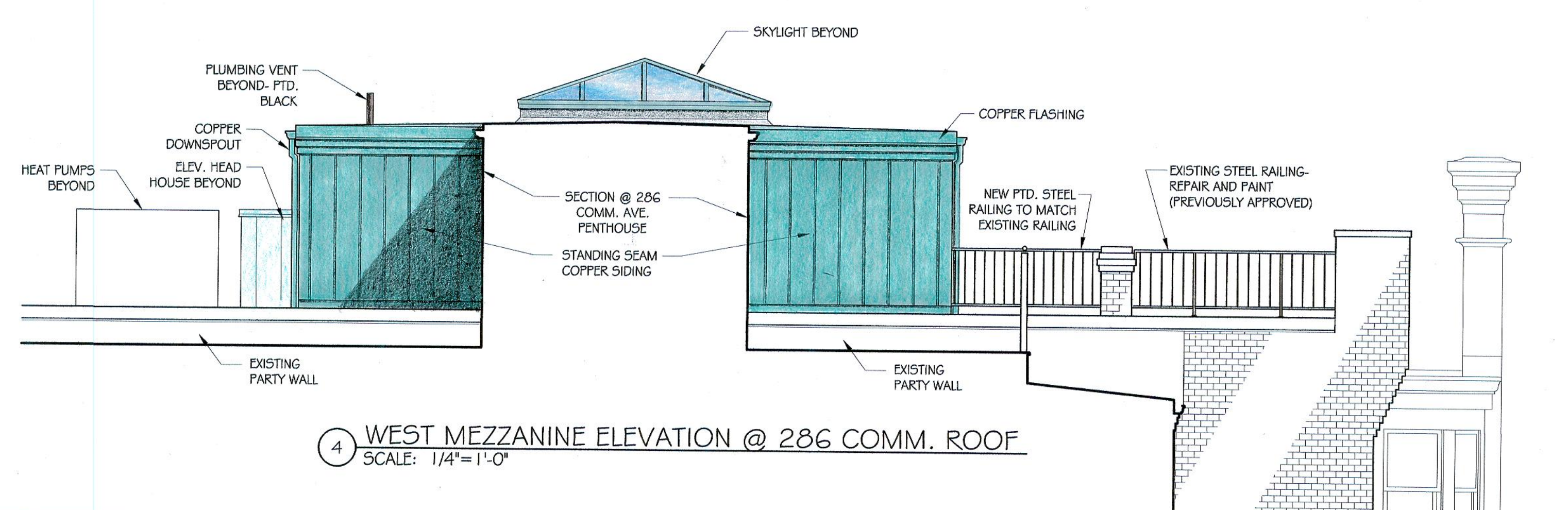
1 EAST MEZZANINE ELEVATION  
SCALE: 1/4" = 1'-0"



2 SOUTH MEZZANINE ELEVATION  
SCALE: 1/4" = 1'-0"



3 NORTH MEZZANINE ELEVATION  
SCALE: 1/4" = 1'-0"



4 WEST MEZZANINE ELEVATION @ 286 COMM. ROOF  
SCALE: 1/4" = 1'-0"

NOTE:  
ALL WOOD WINDOWS AND  
EXTERIOR DOOR TO BE PAINTED  
SEMI GLOSS BLACK.





284 COMM. AVE.  
MEZZANINE MOCK UP SIGHT LINES

02/13/17



284 COMM. AVE. - PHOTO (A) MEZZANINE MOCK UP 02.13.17



284 COMM. AVE - - PHOTO (B) MEZZANINE MOCKUP 02.13.17



284 COMM. AVE. - PHOTO (C) MEZZANINE MOCKUP 02.13.17



284 COMM. AVE. - PHOTO (D) MEZZANINE MOCK UP 02.13.17



284 COMM. AVE. - PHOTO (E) MEZZANINE MOCK UP 02.13.17



284 COMM. AVE. - MEZZANINE MOCK UP (LOOKING SE)

02.13.17



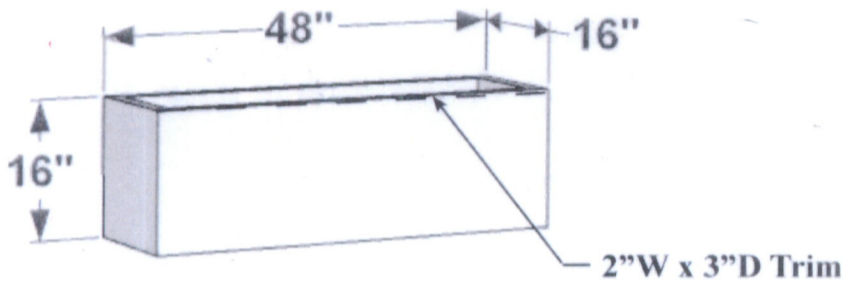
284 COMM. AVE. - MEZZANINE MOCK UP (LOOKING SOUTH) 02.13.17



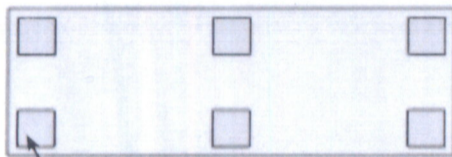
284 COMM. AVE. - MEZZANINE MOCK UP (LOOKING NW) 02.13.17



284 COMM. AVE. - MEZZANINE MOCK UP (LOOKING NORTH) 02.13.17



PERSPECTIVE VIEW



(6) Pads, 4"x4"x1/8"thk.  
Offset 1" from edges.

BOTTOM VIEW

**General Notes:**

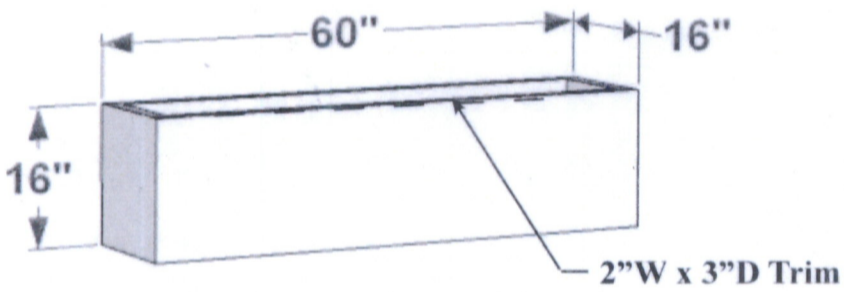
1. Locate drainage holes next to pads
2. If no drain holes are requested it is assumed proper drainage will be added in the field

Drainage: Yes \_\_\_ No \_\_\_

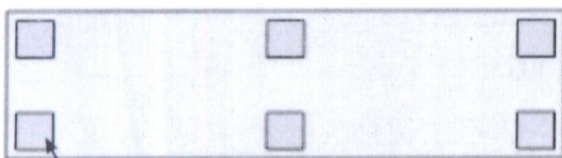
Date:  
Scale: NTS  
DB: RMA  
CB:  
Rep:  
Order#:

Content: Modern Fiberglass Rectangular Planter  
PN: F1-MOD-REC481616  
Color/Finish: **MATTE BLACK**  
Customer Approval: \_\_\_\_\_

Design by Planters Unlimited  
All visual representations and designs are the intellectual property of Planters Unlimited and protected under copyright law. Any duplication of this design is in direct violation of the law and will result in legal action. ©Copyright 2008-2016



PERSPECTIVE VIEW



(6) Pads, 4"x4"x1/8"thk.  
Offset 1" from edges.

BOTTOM VIEW

**General Notes:**

1. Locate drainage holes next to pads
2. If no drain holes are requested it is assumed proper drainage will be added in the field

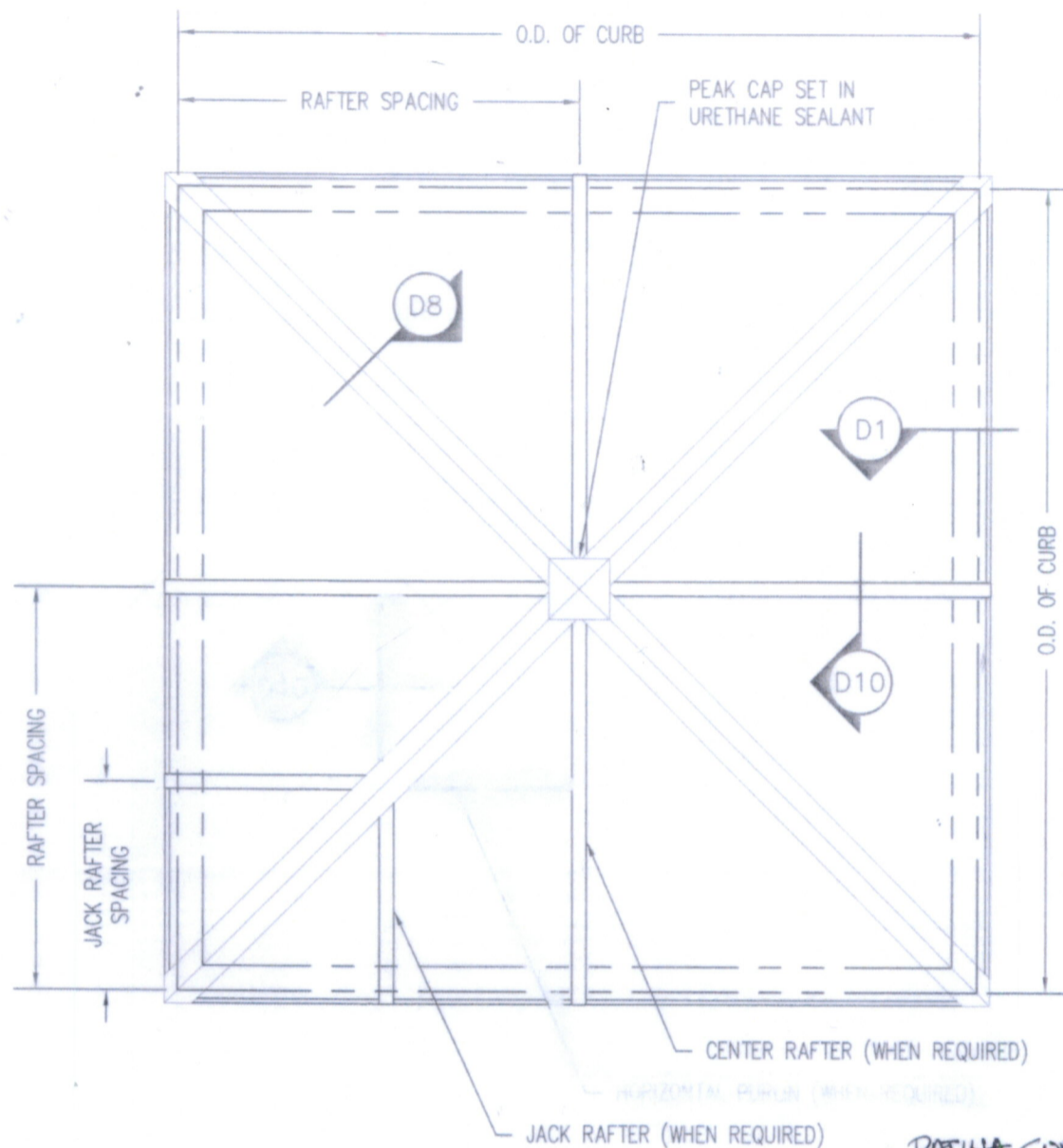
Drainage: Yes \_\_\_ No \_\_\_

Date:  
Scale: NTS  
DB: RMA  
CB:  
Rep:  
Order#:

Content: Modern Fiberglass Rectangular Planter  
PN: F1-MOD-REC601616  
Color/Finish: **MATTE BLACK**  
Customer Approval: \_\_\_\_\_

Design by Planters Unlimited  
All visual representations and designs are the intellectual property of Planters Unlimited and protected under copyright law. Any duplication of this design is in direct violation of the law and will result in legal action. ©Copyright 2008-2016

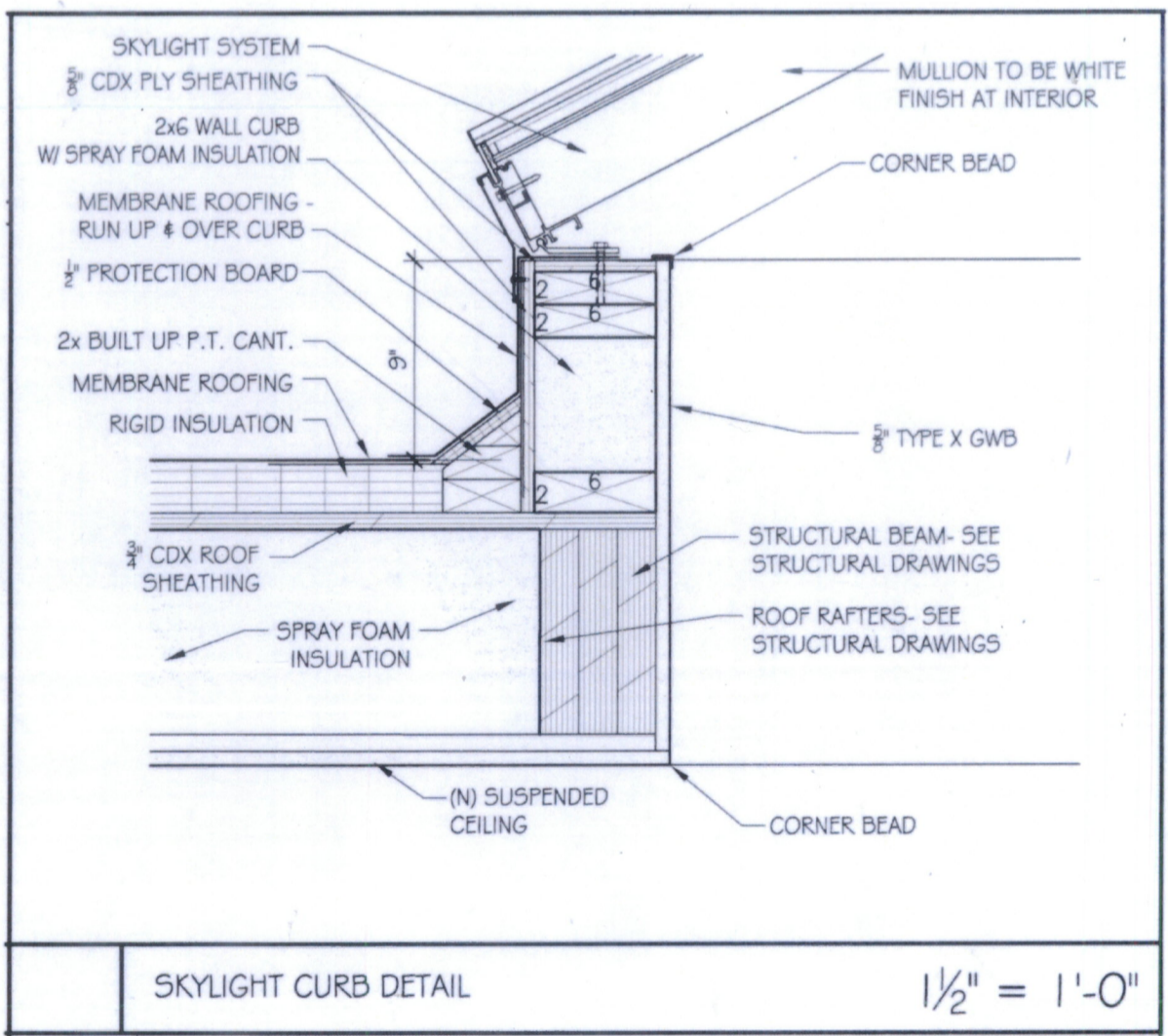




PATINA COPPER  
COLOR PAINTED  
FRAMES  
CLEAR GLASS

- GENERAL NOTES:  
 1) RAFTER LOCATION BASED ON WASCO'S RECOMMENDATIONS AND AAMA GLAZING GUIDELINES (BASED ON SIZE OF UNIT, TYPE OF GLAZING, CUSTOMER'S REQUEST, ETC.)  
 2) UNIT PITCHES ARE AVAILABLE FROM 3:12 TO 20:12

<p>Since 1935 <b>Wasco</b> SKYLIGHTS</p>	<p>Wasco Products, Inc.                  22 Pioneer Avenue, P.O. Box 351                  Sanford, ME 04073                  Fax: 207-490-5270 sales@wascoproducts.com                  800-388-0293 www.wascoproducts.com</p>	<p><b>Pinnacle 350 or 600                  (PY) Pyramid                  Plan View</b></p>	<p><b>PLN1</b></p>
--	--	--	--------------------



SKYLIGHT CURB DETAIL

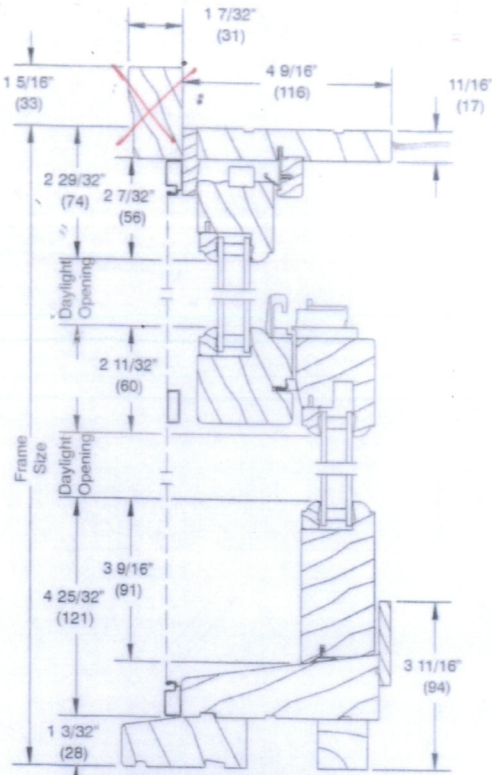
1/2" = 1'-0"

# WOOD ULTIMATE DOUBLE HUNG

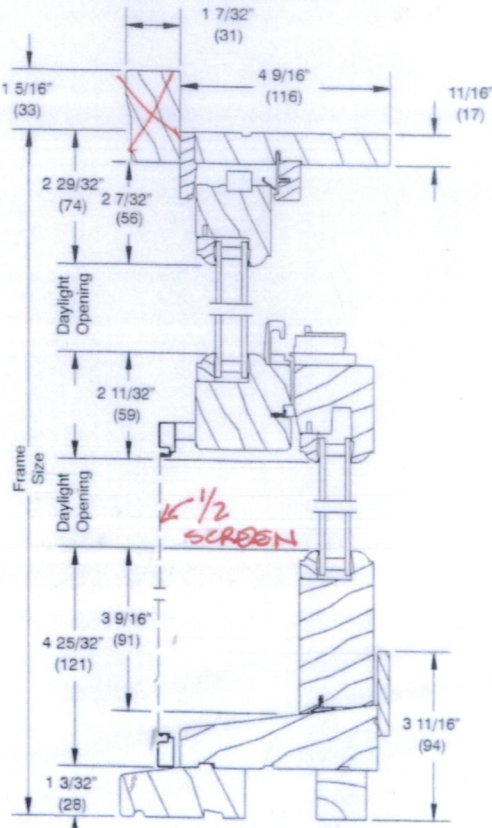
## SECTION DETAILS: OPERATING ONLY

SCALE: 3" = 1' 0"

*MIZZANINE  
WINDOWS*

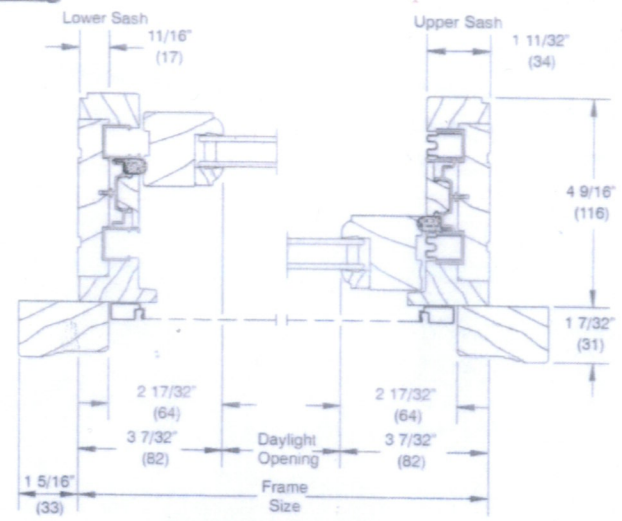


Head Jamb and Sill



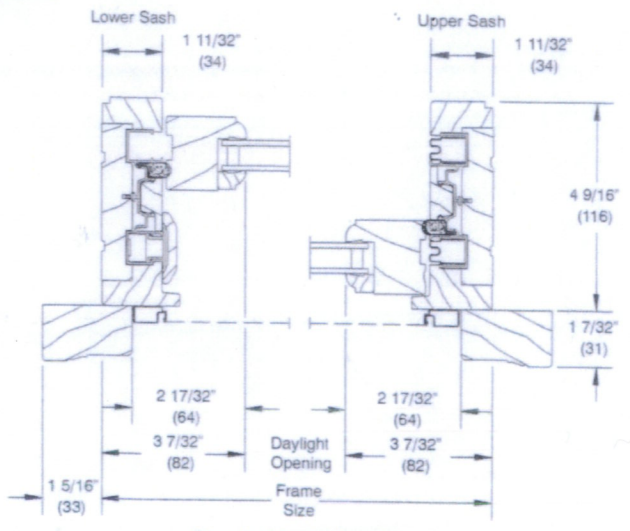
Head Jamb and Sill

### Double Hung



Double Hung Jamb and Sash

### Single Hung

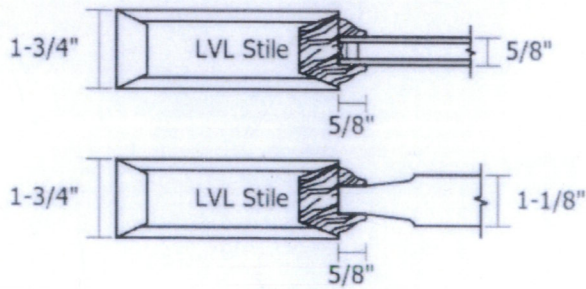
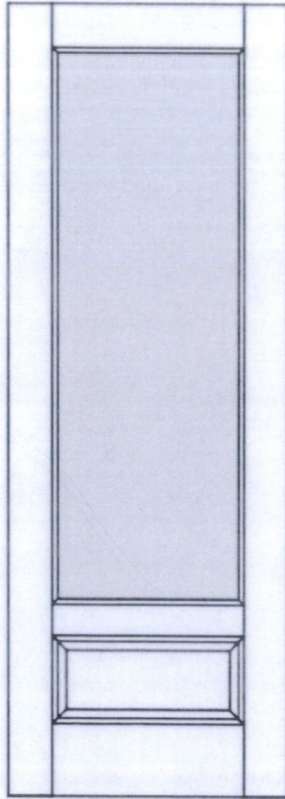


Single Hung Jamb and Sash

**NOTE:**  
Optional half screen shown.



MEZZANINE DOOR



Door Style	Sticking	Panel	Material	Glass / Insert	Fire Rating	Grade
FL110	OG	A	MDF	5/8" Clear Insulated Unit	Non-rated	Exterior
Approval (sign here):				Created On: 02/03/2017		

**EMTEK**  
**ASSA ABLOY**

Providence Knob



CHROME FINISH

**Description**

- Can be ordered with any Brass rosette
- Sold as complete set. Includes Latch and Strike Plate
- 28 Degree Latch is available for additional charge
- For pricing information, contact any Emtek® dealer

**Technical Specs**

- Fits any door between 1-3/8" to 2-1/4" thick with a 2-1/8" bore standard door prep
- Standard latch is for 2-3/8" backset. Specify 2-3/4" backset if required

Upgrade to CF Mechanism

Technical Specifications

**Product Codes**

Regular Rosette Style:

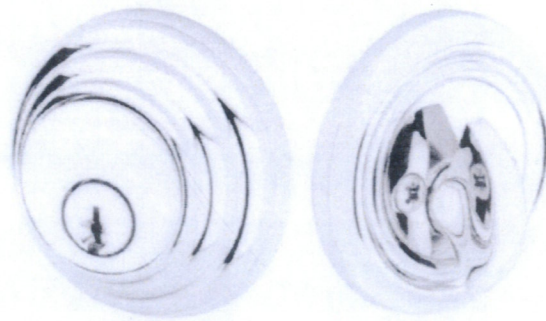
- Passage Set - 8100
- Privacy Set - 8200
- Dummy, Pair - 8050

Rope Rosette Style:

- Passage Set - 8101
- Privacy Set - 8201
- Dummy, Pair - 8051

**EMTEK**  
**ASSA ABLOY**

Brass Low Profile Style



CHROME FINISH

**Description**

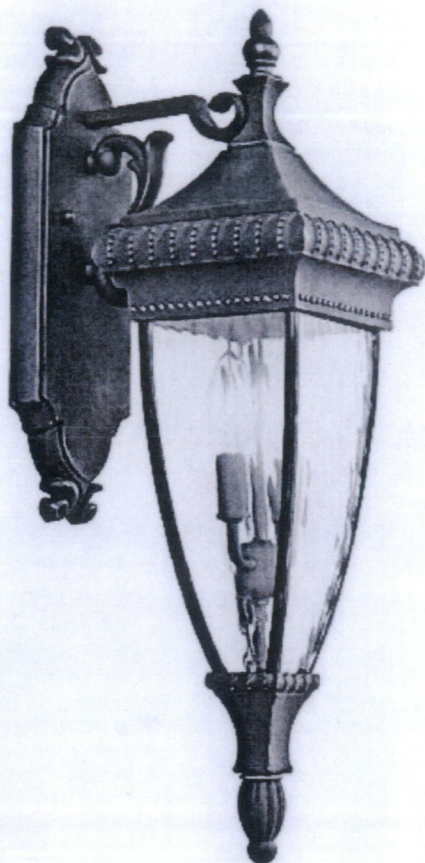
- Sold as complete set. Includes Latch and Strike Plate
- For pricing information, contact any EMTEK® dealer

**Technical Specs**

- Schlage C Keyway
- Standard Door Prep and Installation
- Solid Brass Cylinder, Housing, Collar and Rosette
- Hardened Steel Bolt
- Heavy Gauge Steel Understrike and Brass Trim Strike Shipped with every Deadbolt
- Standard latch is for 2-3/8" backset. Specify 2-3/4" backset if required
- Specify by adding "W" to the beginning of Product Code for Weiser(WR5) Keyway (for example: W8455 US10B). No upcharge for cylinder substitution. Can be keyed into existing Weiser system

Kichler Venetian Rain Black 25 1/2" High Outdoor Wall Light

- Style # M6106



- Black finish.
- Gold finish highlights.
- Venetian Rain glass.
- Cast aluminum construction.
- A Kichler Outdoor Wall Light design.
- Takes two 60 watt bulbs (not included).
- UL listed for wet locations.
- 7 1/2" wide.
- 25 1/2" high.



-DECK LIGHTS AT SOUTH PARAPET

DATE: \_\_\_\_\_ TYPE: \_\_\_\_\_

NAME: \_\_\_\_\_

PROJECT: \_\_\_\_\_



Halogen

# P5223-31WB

## Deck Lighting

Durable cast aluminum. Black finish is powder-coat painted to resist chipping, fading and the effects of salt air. 72 inch leads. 12-volt.

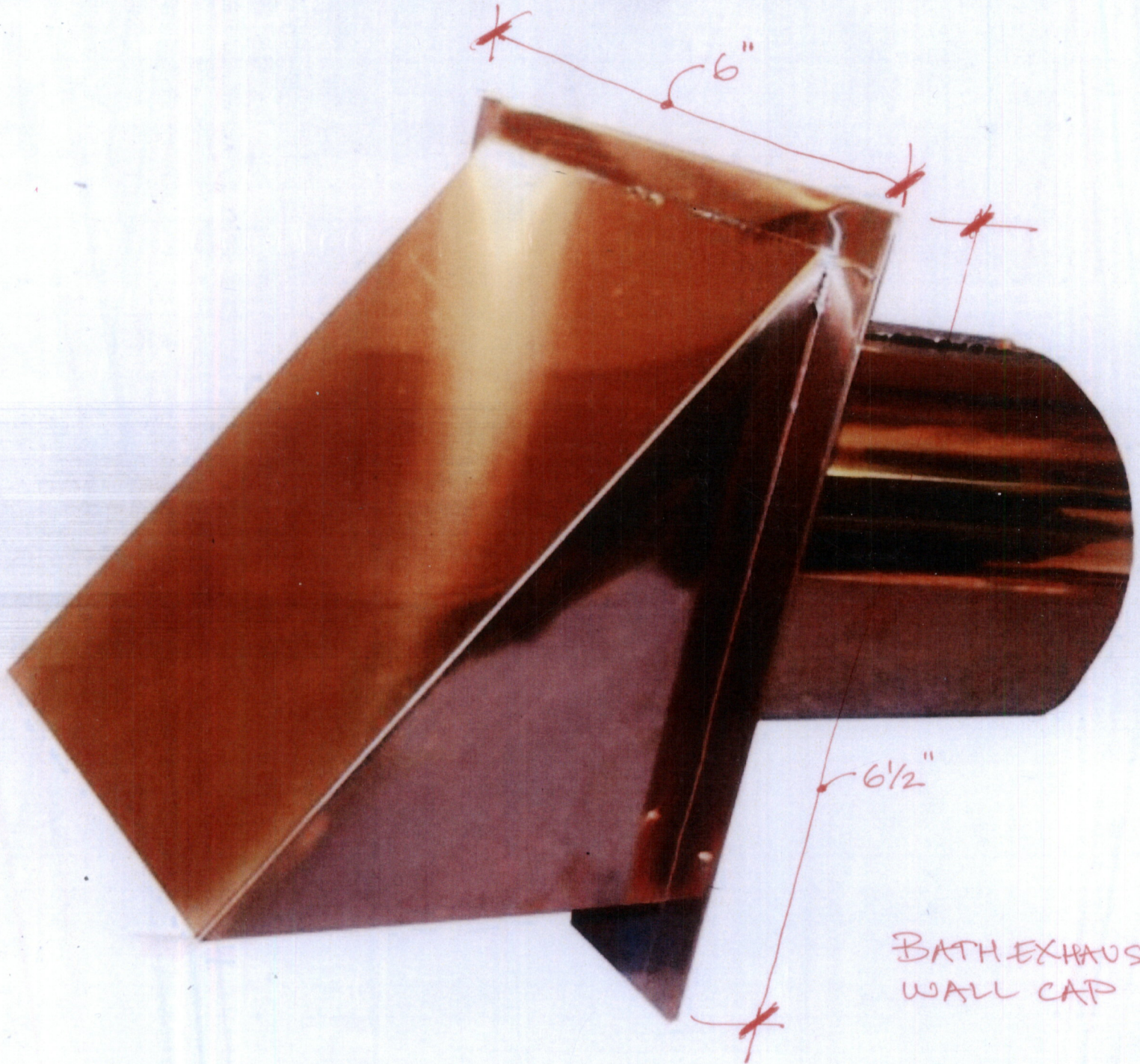
Category: Landscape

Finish: Black (powdercoat)

Construction: Die-cast aluminum construction

Width: 3-1/8"  
Height: 1-1/2"  
Depth: 2"

MOUNTING	ELECTRICAL	LAMPING	ADDITIONAL INFORMATION
Deck mounted	Pre-wired 120V	Quantity: 1 13W T5 wedge base (included) Wedge ceramic socket	UL-CUL Wet location listed 1 year warranty Companion fixtures are available



BATH EXHAUST  
WALL CAP



Small Woo Fire Bowl in Light Gray - 30" dia / 12" h / 5" wide rim



SMALL WOOD FIRE BOWL