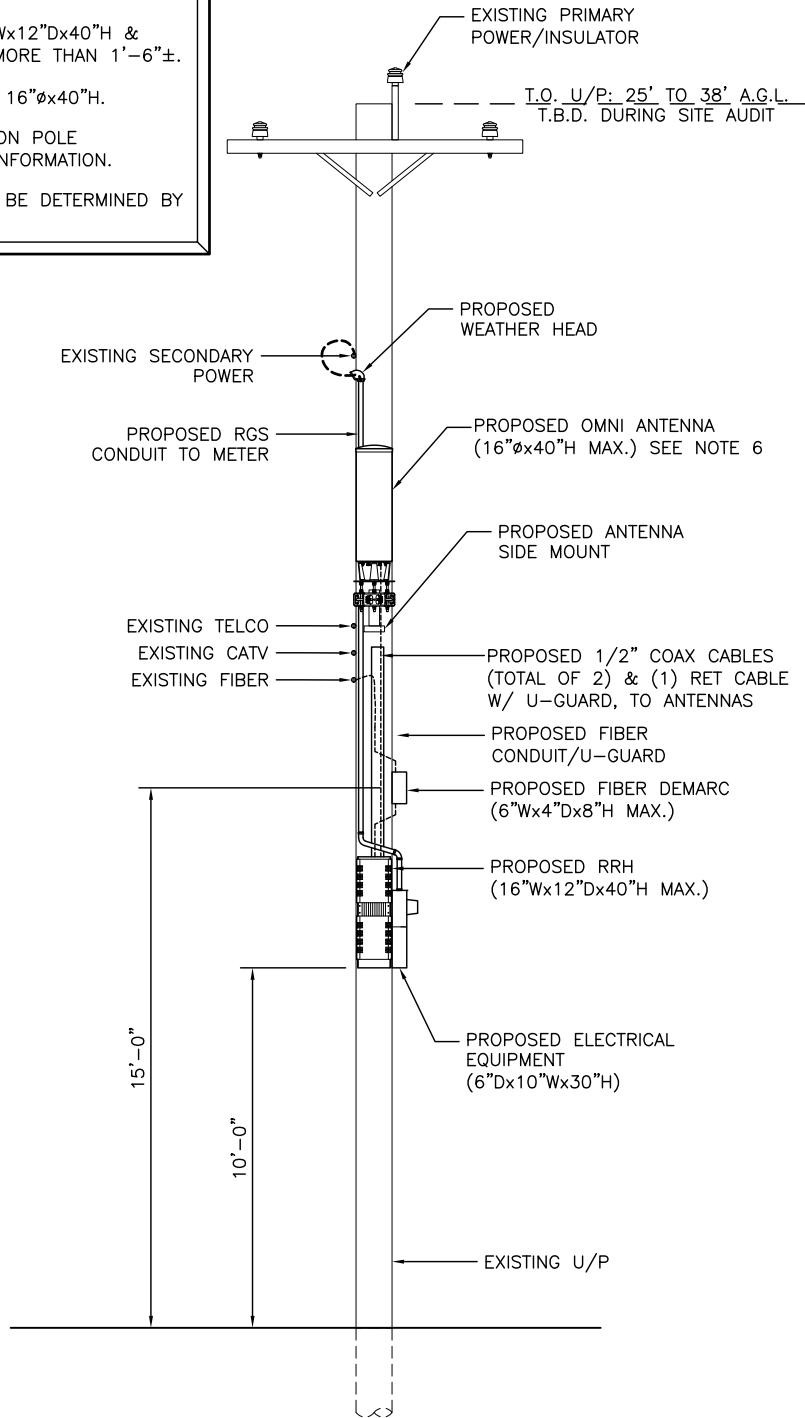


**NOTES:**

1. ALL DISTANCES, DIMENSIONS, LOCATIONS AND EQUIPMENT DESIGNATIONS AND SPECIFICATIONS ARE APPROXIMATE.
2. POLE REPLACEMENT HEIGHTS WILL VARY BASED ON REQUIRED ANTENNA HEIGHTS REQUESTED BY VERIZON WIRELESS.
3. RRH TO BE NO LARGER THAN 16"Wx12"Dx40"H & WILL NOT PROTRUDE FROM POLE MORE THAN 1'-6"±.
4. ANTENNA TO BE NO LARGER THAN 16"Øx40"H.
5. VZW WILL PLACE SMALL PLACARD ON POLE IDENTIFYING OWNERSHIP/CONTACT INFORMATION.
6. ANTENNA PLACEMENT ON POLE TO BE DETERMINED BY UTILITY REQUIREMENTS.



**WOOD UTILITY POLE WITH ANTENNA SIDE MOUNT**

PREPARED BY:  
**NEXIUS**  
 TRANSFORM YOUR BUSINESS... THROUGH WIRELESS  
 A&E OFFICE:  
 7A LYBERTY WAY  
 WESTFORD, MA 01886  
 1 (972) 755-1882

CLIENT:  
  
 400 FRIBERG PARKWAY  
 WESTBOROUGH, MA 01581  
 1 (508) 330-3300

SUBMITTALS			
NO	DATE	DESCRIPTION	BY
A	03/22/16	FOR REVIEW	JM

SHEET NO:  
**SK-1**



Existing Conditions: Wood utility pole.



Proposed Conditions: Wood utility pole with equipment & side mounted antenna.